



Say CHEESE!



FACULTY OF ECONOMICS AND ADMINISTRATION

13. 9. 2023



WHO WE ARE

- founded in 1991
- more than **10 000 graduates**
- **2 500+** students
- **5** departments and **2** divisions

DEPARTMENTS

DEPARTMENTS AND STUDY PROGRAMMES	
Business Management and Finance (B)	Department of Business Management + Department of Finance
Economics and Public Policy (B)	Department of Economics + Department of Public Economics
Economics (M)	Department of Economics
Business Management (M)	Department of Business Management
Finance (M)	Department of Finance
Public Finance and Economics (M)	Department of Public Economics
Regional Development and Tourism (M)	Department of Regional Economics
Public Administration (Administration publique) (M)	Department of Public Economics + Rennes 1 University

MASARYKOVA UNIVERZITA

FACULTY OF ECONOMICS AND ADMINISTRATION

https://www.youtube.com/watch?v=SNHs_luvWh4



INTERNATIONAL COOPERATION

More than **100**
bilateral agreements

- 150 exchange students every year
- 180 courses taught in English
- Degrees in cooperation with UK, France, Italy



STUDY PROGRAMMES AT FEA

We have you covered.

BACHELOR'S DEGREE

- Economics and Public Policy
- Business Management and Finance

MASTER'S DEGREE

- Economics
- Public Finance and Economics
- Finance
- Business Management
- Regional Development and Tourism
- Public Administration (Administration Publique)

PHD STUDIES

- Economics
- Economic Policy
- Public Economics
- Finance
- Business Economy and Management

STUDY INFORMATION

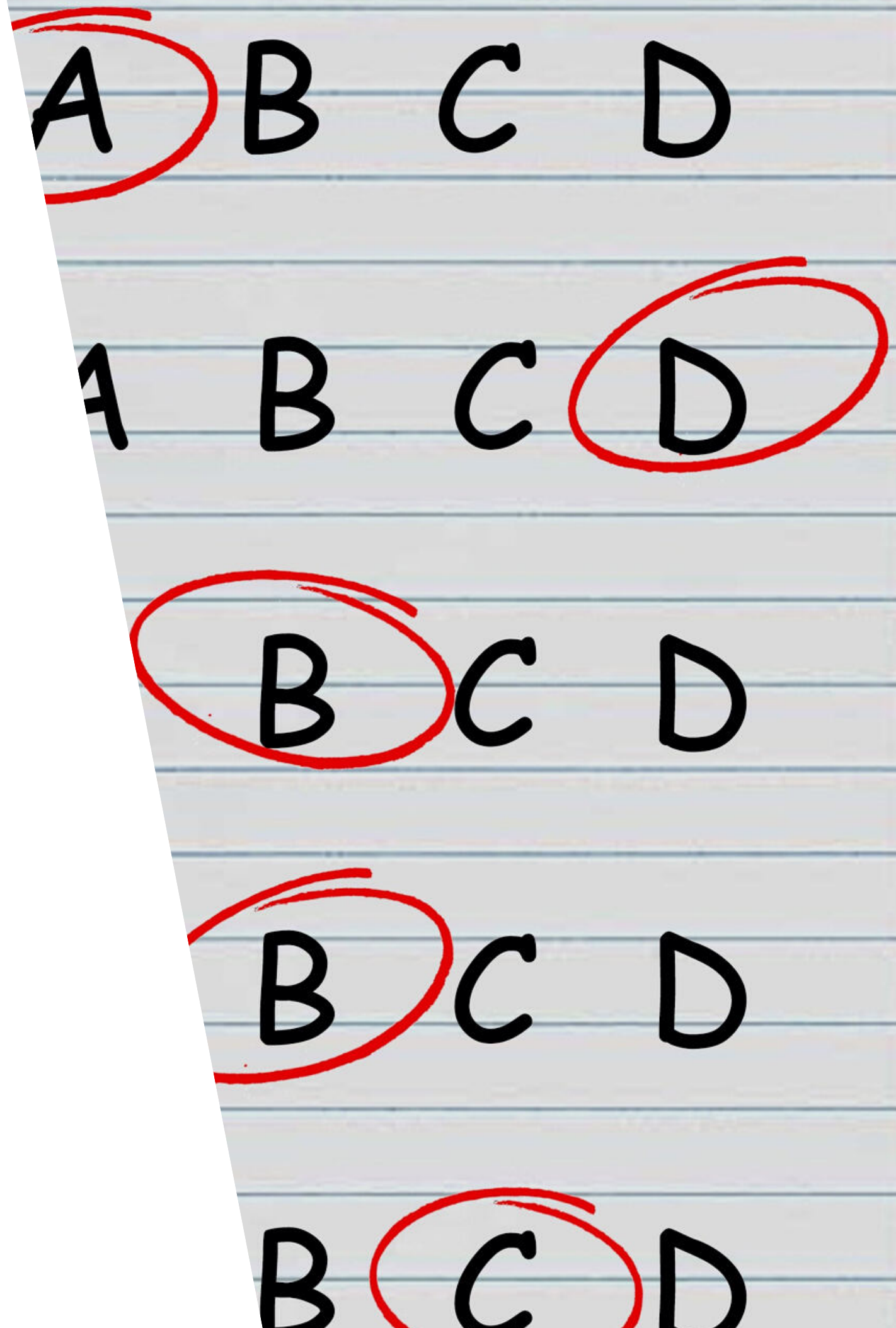
- Teachers will inform you about the organization of their courses by email or at the first lectures and seminars.
 - You can access information about courses in IS.
- **Attend** scheduled lectures and seminars.
- **Seminars are always compulsory!**
- **Communicate** with the teachers.
- Complete **at least 20 ECTS** per semester (30 ECTS optimum for degree students).

EXAMINATION

Students need to **meet the requirements** to be able to sit an exam (e.g. attendance, semester tests, projects, points etc.)

All students:

1 regular attempt + 2 re-sits



PLAGIARISM

...IS A SERIOUS VIOLATION OF THE CORE OF ACADEMIC ETHICS

- **Intentional copying** of another author's text and the representation and publication of such a text as one's own original work
- **Inaccurate citation** of literature source
- The omission of required bibliographical information (however unintentional)

Plagiarism is detected using a special tool in the IS (even in English)!

You can check your document before submitting it:
"search for similar files"



STUDENT WEBSITE

econ.muni.cz/students

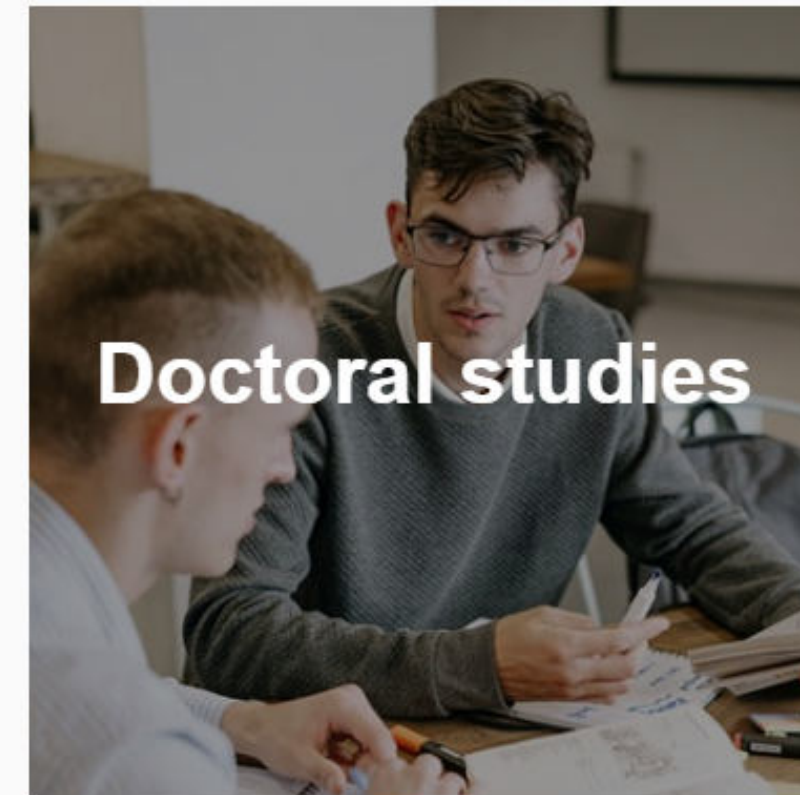
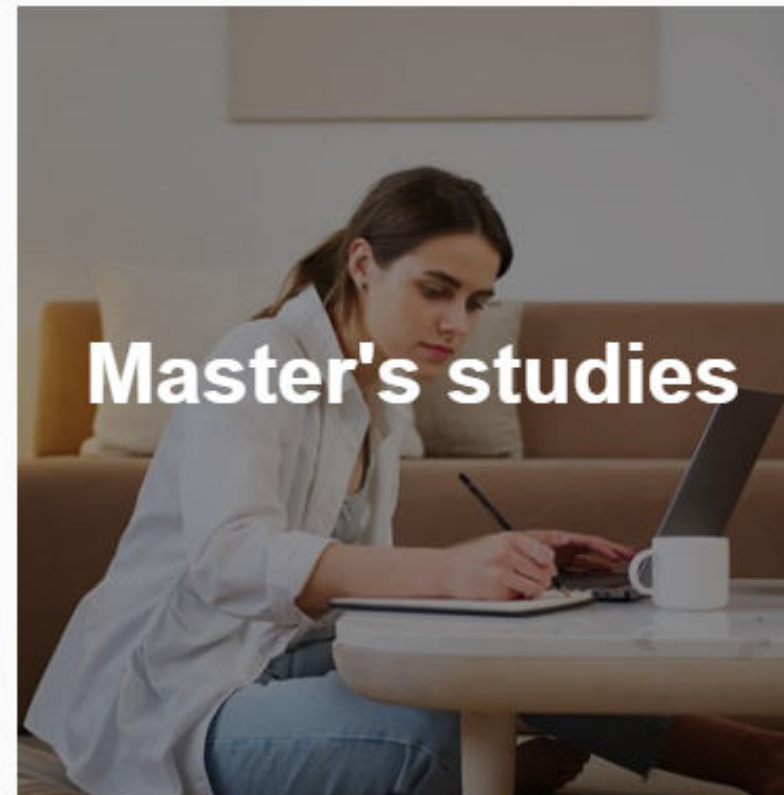
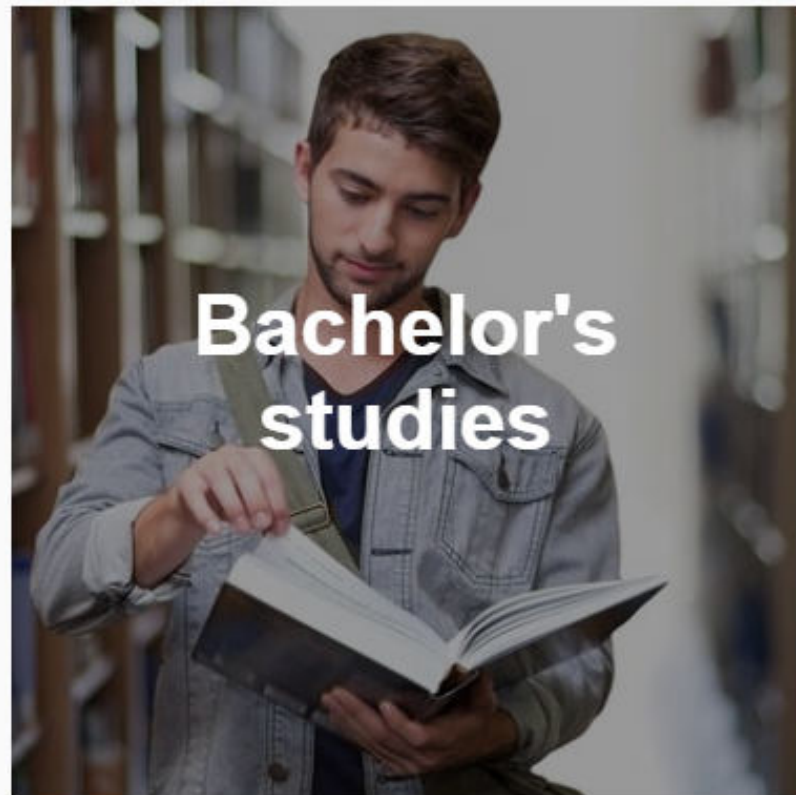
STUDENT GUIDES

STUDY ABROAD

HEALTH CARE

LEGISLATION

STUDY ONLINE



SEMESTER DATES

Check the Schedule of the Academic Year:

<https://www.econ.muni.cz/en/students/bachelors-and-masters-studies/schedule-of-the-academic-year>.

Academic year 2023/2024	
Schedule of the Academic year 2023/2024	
Autumn semester 2023	
Course registration	22. 5. 17:00 – 31. 7. 2023
Application for enrolment in the following semester (must be done by every student willing to continue in their studies)	22. 5. – 17. 9. 2023
Enrolment of students in the semester (done by your study coordinator based on your application)	1. 8. – 17. 9. 2023
Course enrolment	4. 9. 17:00 – 17. 9. 2023
Changes in course enrolment (add/drop courses)	18. 9. – 1. 10. 2023
Seminar group enrolment	5. 9. 17:00 – 1. 10. 2023
Timetable announcement	21. 8. 2023
Teaching period	18. 9. – 22. 12. 2023
Faculty Introduction week	18. 9. - 22. 9. 2023
Reading week	6. 11. - 10. 11. 2023

COURSES WITH FREE CAPACITY

COURSE CODE	COURSE TITLE
BPV_APUA	Public Administration
BPV_EUPP	European Union Public Policy
MPE_LAWE	Law & Economics
MPE_APRE	Applied predictive modelling in credit risk
MPE_TIAP	Transport Investment Appraisal
MPF_AIFI	International Finance
MPF_APFE	Applied Financial Econometrics
MPF_ASAN	Security Analysis

COURSES WITH FREE CAPACITY

COURSE CODE	COURSE TITLE
MPH_BUPR	Business Projects
MPH_TBIN	Theory of Business Informatics
MPR_QQRM	Qualitative and Quantitative Research Methods
MPR_SPEC	Spatial Economy
MPV_APF2	Public Finance 2
MPV_CSES	Civil Society, Economy and the State
MPV_LMSI	Labour market and socioeconomic inequalities

ARE YOU A NATIVE SPEAKER?

**ENGLISH/ FRENCH/ GERMAN/ RUSSIAN/
SPANISH/ CHINESE**

BECOME A TEACHER'S ASSISTANT

COURSE CODES:

- LSP_TA_F Language teaching assistant - French
- LSP_TA_G Language teaching assistant - German
- LSP_TA_S Language teaching assistant - Spanish
- LSP_TA_Ch Language teaching assistant - Chinese
- LSP_TA_E Language teaching assistant - English
- LSP_TA_R Language teaching assistant - Russian

Excellent teaching experience + certificate+ 2 ECTS!

FACULTY SERVICES

LIBRARY

- a great number of books and e-resources
- study boxes

Opening Hours

Mon – Thurs: 8:00 - 20:00

Fri: 8:00 - 16:00

Selected Saturdays 9:00 - 13:00

<https://www.econ.muni.cz/en/library>

CICT

Centre for Information and Communication Technologies

- Ground floor, room 004
- IT service:

passwords, printers, copy
machines, wi-fi

Need help?

<https://it.muni.cz/en>
cikt@econ.muni.cz

PASSWORDS

Type of password:	Access:
Primary password	<ul style="list-style-type: none">• Information System
Secondary password	<ul style="list-style-type: none">• Wifi network (Eduroam, MUNI)• University computers• Library catalogue

OFFICE FOR INTERNATIONAL RELATIONS

Office hours:

Mon: 13-15

Wed: 9-11 13-15

Fri: 9-11



JANA NESVADBOVÁ

Head of the Office

Jana.Nesvadbova@econ.muni.cz

Office 211, 2nd floor



ADÉLA BENEŠOVÁ

Degree students

Adela.Benesova@econ.muni.cz

Office 210, 2nd floor



ŠTĚPÁNKA LACKOVÁ

Exchange students

Stepanka.Lackova@econ.muni.cz

Office 210, 2nd floor



BARBORA NĚMCOVÁ

Admission to degree studies

Barbora.Nemcova@econ.muni.cz

Office 211, 2nd floor

PLAN FOR UPCOMING DAYS:

Friday, 15 September - compulsory testing for Master's students

Next week (18 - 22 September) - Introduction week - compulsory for everyone

- I will send you a detailed programme to your uni e-mail address this week

FOLLOW US HERE



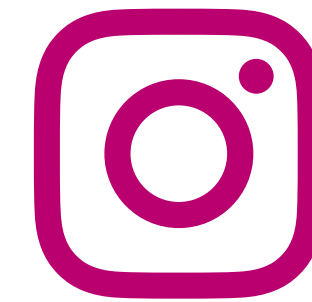
FACEBOOK

@FEAMasarykUniversity



WWW

www.econ.muni.cz/en



INSTAGRAM

@feamasarykuniversit