



Address and contact

Centre of Scientific Information
Faculty of Economics and Administration
Masaryk University
Lipová 41a
602 00 Brno-Pisárky

49°11'36.821"N, 16°34'38.806"E"



Phone: **+420 549 49 5271**

Central e-mail address: **knihovna@econ.muni.cz**

Loans e-mail address: **vypujcky@econ.muni.cz**

CSI electronic catalogue: **aleph.muni.cz**

More information on: **svi.econ.muni.cz**



**"True genius resides in the capacity
for evaluation of uncertain, hazardous,
and conflicting information."**

Sir Winston Churchill

"We supply the information!"
CSI FEA MU



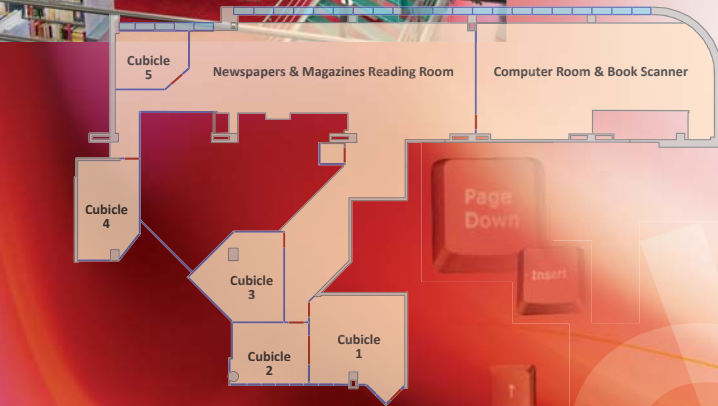
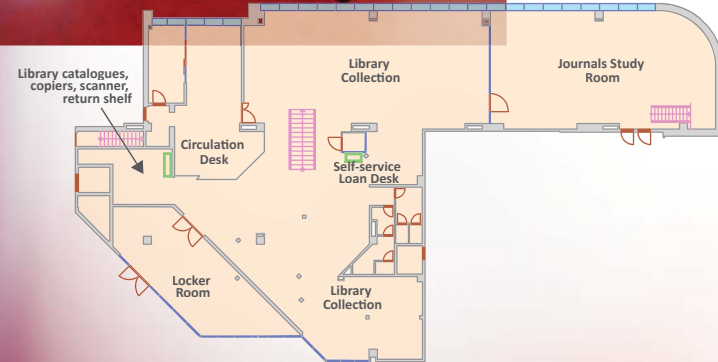
Google Street View Virtual Tour:



Centre of Scientific Information



MASARYK UNIVERSITY
FACULTY OF ECONOMICS
AND ADMINISTRATION



Opening Hours

Monday-Thursday **8.00 – 20.00**

Friday **8.00 – 16.00**

Saturday **9.00 – 13.00**

(during the semester only, see the CSI web)





Information resources

The library's book collection consists of nearly 80 thousand books, textbooks, and reports from research in economics, macro and microeconomics, finance, trade, public economics, regional studies, management, marketing, statistics, sociology, psychology, informatics, computer technology, philosophy and other related disciplines.

The collection of journals consists of about 100 Czech and foreign printed periodicals in the areas given above. The library also subscribes to more than ten Czech dailies and weeklies.

Electronic sources of information are available on 25 computers in the library. These computers are freely available for work with a text editor, table processor and other standard programs.

Valuable foreign full-text databases (e.g. EconLit, OECD iLibrary, Emerald Managements, ScienceDirect, JSTOR and many others), economic information, analyses and corporate data (Patria Plus, Bisnode MagnusWeb), citation indices (Web of Science, Scopus), media databases (Anopress IT, The Economist Historical Archive), e-book collections (ebrary Academic Complete, Elsevier, Springer, Wiley and Taylor & Francis) and many others are also available.

More information is available at svi.econ.muni.cz/infzdroje



How does it all work?

Readers can search for the literature they are looking for at the address aleph.muni.cz, where they can find out whether the library holds the requested documents and whether they are currently available or when documents that have been loaned out **are to be returned**. Documents that have been loaned out can be reserved directly in the web catalogue.

During opening hours, readers can borrow and return books on their own thanks to the RFID technology. The self-service loan desk and the return shelf are placed at the entranceway of the library.

The library has two self-service copiers and two self-service scanners freely available for use.

Excellent study conditions are provided by five study cubicles equipped with large LCD screens connected to a PC;

these serve as quiet zones for individual study or – if reserved – for group work on projects, co-operative study activities, specialised seminars, etc.

The Bibliobox in the faculty foyer can be used to return books outside opening hours.

All sources of information are electronically secured against theft and the library is monitored by security cameras.

The library is air-conditioned and offers barrier-free access.

The rules for the operation of the CSI are laid out in the Library Code which you can find on the CSI web.

The CSI staff is here to help you and happy to assist with all of your library needs.

