

IS BAPS

GIS for Network Administration



Jitka Spurná

jitka.spurna@ics.muni.cz



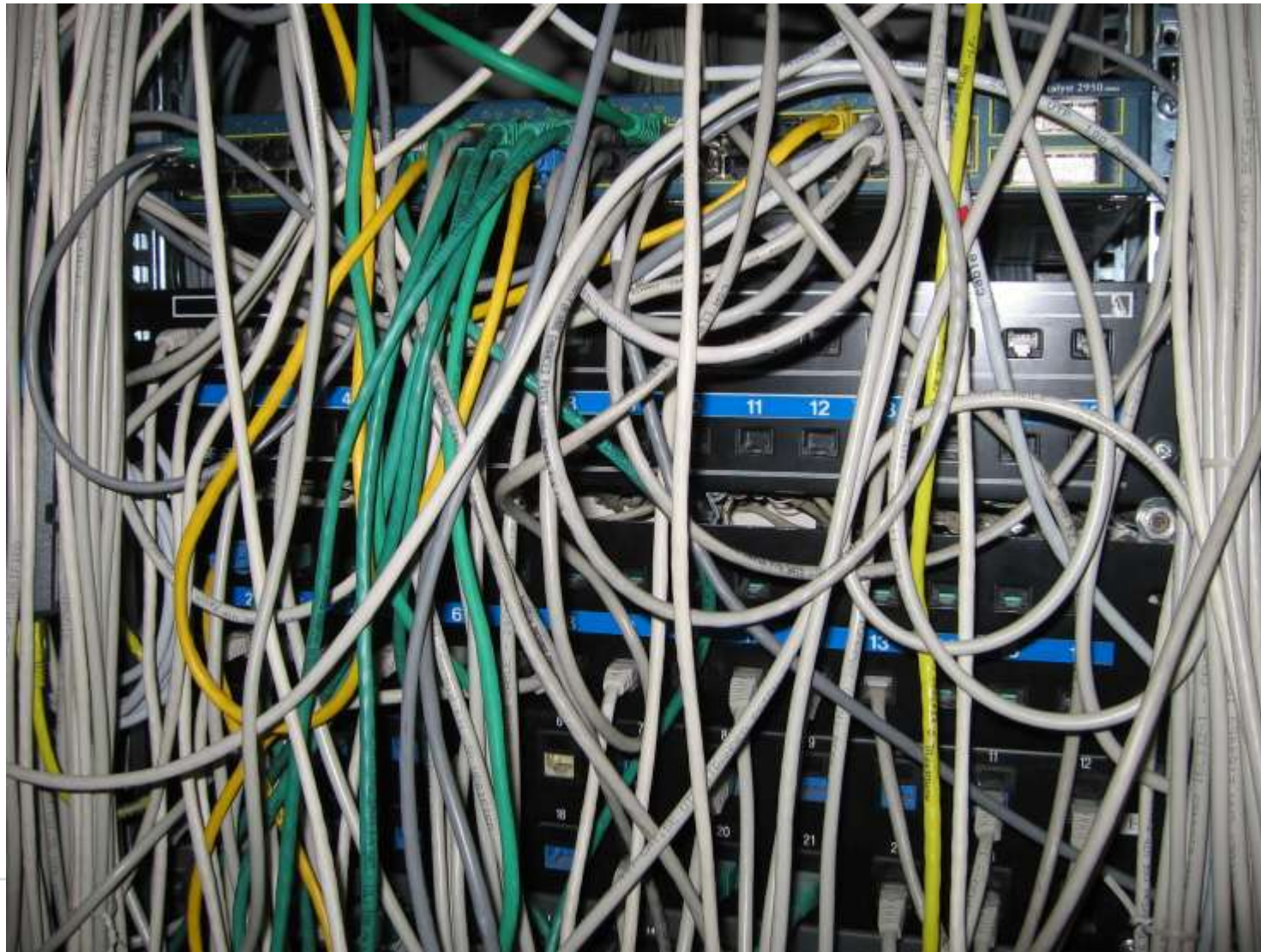
■ What is IS BAPS?

Geographic Information System for Network Administration

BAPS (shortcut for Academic Network in Brno)

- **Register of network objects**
Cables, patch panels, sockets, routers, switches
- **Network for data and telephones**
Pins of a connector, wires of a cable
- **Routes for tracing connections**
- **Administration of documents, properties**

■ Network reality



■ Network reality



■ Content in numbers

- **480 locations**
- **11 000 devices**
racks, routers, servers, ...
- **19 000 patch panels and network sockets**
- **36 000 cables**
- **254 000 wires**

■ Why GIS?

Window with map

- **Exact routes of outdoor cables**
- **Various base map**
City map, orthophoto, cadastral map
- **Indoor schema**
Floors and rooms, network sockets, racks

■ About development

Desktop application

- began as a student thesis
- C++
- ESRI map technologies

Decision about future of the system:

New?

Web x Desktop

Self development x purchase ready-made software

Live demo..
Thank you for your attention.

A decorative graphic at the bottom of the slide consists of several wavy, overlapping lines. The most prominent is a thick, dark red wave. Above it are several thinner, light grey waves. Three light blue dots are connected by thin lines, forming a path across the upper part of the graphic.

Jitka Spurná

jitka.spurna@ics.muni.cz