

IS FOR DUMMIES®



is.muni.cz




Student Number

Term

Semester

Year

Group

- 1) Password
 - 2) WIFI connection
 - 3) Mail
 - 4) SUPO
 - 5) Scholarship
 - 6) Study Materials / MIMSA notes
 - 7) Credit system
 - 8) Booking exams
 - 9) P.E Enrolment
 - 10) Library
 - 11) Nostrifikace
- 

1) Passwords

1. Primary password = Received at enrollment.

Access to IS MUNI

2. Secondary password => Main page
=> System => Change password

For eduroam access, and to log onto computers at university.

MY MAIL
PEOPLE

STUDENT



[My Mail](#) (+), [People](#) (+)

[Send mail](#), [Pošta v IS MU](#), [Person search](#), [My Personal Page](#)

TIMETABLE

COURSES

STUDIES

ENTRANCE

EXAMS



[Student](#) (+)

[Grades](#), [Examinations](#), [Notebooks](#), [Registration and enrollment](#)

NOTICEBOARD

DISCUSSION



[Timetable](#) (+), [Courses](#) (+), [Studies](#) (+), [Document Office](#), [Admission Procedures](#) (+)

[My timetable](#), [Find a course](#), [Browse templates](#), [Term Calendar](#), [Lists of topics \(thesis, dissertation, etc.\)](#), [Application submission](#)

PERSONAL

MEET PEOPLE



[Noticeboard](#), [Invitations](#), [Advertisements](#), [Discussion group](#)

[Post a message on Noticeboard](#), [My messages posted on Noticeboard](#)

DEPOSITORY

MY WEB

DOCUMENTS



[Externí služby](#)

[Google mail](#), [Google Disk a Dokumenty](#), [Google Kalendář](#), [Google Keep](#)

ELPORTÁL

DRILL

PUBLICATIONS



[Personal Section](#) (+), [Job market](#), [Contacts](#) (+)

[Check and change your personal data](#), [Check and confirm](#), [Telephone directory](#), [Department](#)

SHOPPING

CENTER

SCHOLARSHIP

DORMITORY



[Meet People \(Schoolmates\)](#) (+), [Graduates](#) (+)

[My Friends](#), [Groups](#), [Blogs](#), [Bookmarks](#), [Activities](#), [Add bookmark](#), [All my favourite bookmarks](#)

EVENTS

SYSTEM

DESIGN

HELP



[File Depository](#), [My Web](#), [File Manager](#) (+), [Documents](#)

[Upload a file into someone else's Depository](#), [Change expiration date](#)

2) *Connecting to the WIFI*

<http://eduroam.muni.cz/doku.php?id=en:uvod>

All students and employees of Masaryk University can join MU wifi network from their notebooks and other mobile devices.

MU wifi network supports two different technologies;

▶ **Eduroam network** - **User:** UČO@eduroam.muni.cz
Password: Secondary password

- ▶ Data transfer rate is higher.
- ▶ Eduroam is supported at many universities both in Czech Republic and abroad.

3) Mail



MASARYK UNIVERSITY INFORMATION SYSTEM

Message List

• [IS MU](#) • [Personal Administration](#) • [My Mail](#)

HIGHLIGHT

[+ New mail](#)

[Contacts](#) | [Folders and Limits](#) | [Settings](#)

IS MONITORING

Mail is redirected to the address stuart.hopkinson@gmail.com.
The messages occupy 1 % of the available space.

MY MAIL

PEOPLE

STUDENT

TIMETABLE

COURSES

STUDIES

ENTRANCE

EXAMS

Folder: Refresh Limit to [✳ Important only](#) | [📄 Tags and highlighting](#)

Mark: [all](#), [none](#) | Messages in this folder: Operation: OK

✳ Sender v | ^

📄 Subject v | ^ || Threads v | ^

4) *SUPO*

<https://inet.muni.cz/app/supo/info>

What is SUPO?

It is money on your ISIC card.

How does it work? (with ISIC card)

1st: Activation of SUPO account (logging-in with učo number and primary password)

2nd: Deposit money via automatic machines (med fac, campus library etc) or in the canteens

3rd: Use it:

- * Pay dorm fees and services
- * Print & Copy
- * Catering services
- * Beverages and refreshments in vending machines
- * more...

5) Scholarship

[Simplified mo](#)

MY MAIL
PEOPLE

STUDENT



[My Mail](#) (+), [People](#) (+)

[Send mail](#), [Pošta v IS MU](#), [Person search](#), [My Personal Page](#)

TIMETABLE

COURSES

STUDIES

ENTRANCE

EXAMS



[Student](#) (+)

[Grades](#), [Examinations](#), [Notebooks](#), [Registration and enrollment](#)

NOTICEBOARD

DISCUSSION



[Timetable](#) (+), [Courses](#) (+), [Studies](#) (+), [Document Office](#), [Admission Procedures](#) (+)

[My timetable](#), [Find a course](#), [Browse templates](#), [Term Calendar](#), [Lists of topics \(thesis, dissertation, etc.\)](#), [Application submission](#)

PERSONAL

MEET PEOPLE



[Noticeboard](#), [Invitations](#), [Advertisements](#), [Discussion group](#)

[Post a message on Noticeboard](#), [My messages posted on Noticeboard](#)

DEPOSITORY

MY WEB

DOCUMENTS



[Externí služby](#)

[Google mail](#), [Google Disk a Dokumenty](#), [Google Kalendář](#), [Google Keep](#)

ELPORTÁL

DRILL

PUBLICATIONS



[Personal Section](#) (+), [Job market](#), [Contacts](#) (+)

[Check and change your personal data](#), [Check and confirm](#), [Telephone directory](#), [Department](#)

SHOPPING

CENTER

SCHOLARSHIP

DORMITORY



[Meet People \(Schoolmates\)](#) (+), [Graduates](#) (+)

[My Friends](#), [Groups](#), [Blogs](#), [Bookmarks](#), [Activities](#), [Add bookmark](#), [All my favourite bookmarks](#)

EVENTS

SYSTEM

DESIGN

HELP



[File Depository](#), [My Web](#), [File Manager](#) (+), [Documents](#)

[Upload a file into someone else's Depository](#), [Change expiration date](#)

▶ Enter number of CZECH BANK ACCOUNT

- [Enter number of the account to which you want scholarship payments to be sent](#)
- [Application for financial support for accommodation \(accommodation support\)](#)
- [Application for maintenance grant](#)
- [Browse scholarship programmes](#)
- [Documents - regulations related to scholarship programmes](#)
- [List of submitted and approved scholarship applications](#)
- [Informace o sociálním stipendiu \(Stipendijní program k přiznávání stipendií v případě tíživé sociální situace s](#)
- [Scholarship and Bursary Regulations](#)

▶ Apply for scholarship in the given period




6) *Study Materials*



- ▶ Biophysics

<http://www.med.muni.cz/biofyz/md.htm>

- ▶ Everything else is in the IS system
- ▶ Student => Study Materials

MY MAIL
PEOPLE
STUDENT
TIMETABLE
COURSES
STUDIES
ENTRANCE
EXAMS

 [My Mail](#) , [People](#) 
[Send mail](#), [Pošta v IS MU](#), [Person search](#), [My Personal Page](#)

 **[Student](#)** 
[Grades](#), [Examinations](#), [Notebooks](#), [Registration and enrollment](#)



HIGHLIGHT

IS.MUNI.CZ

[Student](#) | [Grades](#) | [Examinations](#) | [Course registration and enrollment](#) | [Seminar Groups](#) | [Study Materials](#) | [ROPOT \(Revision, Opinion Poll and group\)](#) | [Notebooks](#) | [More applications...](#) ▾

Interactive Syllabi

Study materials ordered logically or chronologically:

- [LF:VSCJ0181](#)
 - [Titulní strana předmětu VSCJ0181 Čeština pro cizince I](#)

New (hitherto unread) files in the Study Materials

- [LF:VLBF011p Biophysics - lecture](#) (46 new files)
- [LF:VSAN0131p Anatomy I - lecture](#) (1 new file)
- [LF:VSAN0131s Anatomy I - seminar](#) (1 new file)
- [LF:VSBI0121c Biology I - practice](#) (44 new files)
- [LF:VSBI0121p Biology I - lecture](#) (31 new files)
- [LF:VSBI0121s Biology I - seminar](#) (8 new files)
- [LF:VSCJ0181 Czech Language for Foreigners I - practice](#) (3 new files)
- [LF:VSLC011c Medical Chemistry - practice](#) (4 new files)
- [LF:VSLC011p Medical Chemistry - lecture](#) (89 new files)
- [LF:VSLC011s Medical Chemistry - seminary](#) (2 new files)
- [LF:VSLT0121c Basic Medical Terminology I - practice](#) (2 new files)
- [LF:VSPO011c First Aid - practice](#) (38 new files)
- [LF:VSPO011p First Aid - lecture](#) (20 new files)
- [LF:ZC011 Handling chemical substances](#) (2 new files)

MIMSA NOTES



Masaryk International
Medical Students Association

[ORIENTATION WEEK 2013 »](#) | [ELECTIONS »](#) | [PHOTO GALLERY »](#) | [EDUCATION »](#) | [SOCIAL »](#) | [NEWS](#) | [CALENDAR](#) | [CONTACT US »](#)



MIMSA Board 2013



ORIENTATION WEEK 2013

September 09, 2013 vice-president [No comments](#)

For information about Orientation Week 2013 click the image below:

USEFUL LINKS

[University Timetables](#)

[Faculty Website](#)

[Study Department \(with office hours\)](#)

[Mimsa I.S Study Materials folder](#)

[MIMSA events Calendar](#)

[Accomodation website](#)


PARTNER STUDENT SOCIETIES

[ISC MU \(International Student Club
MU Brno o.s.\)](#)


[International Federation of Medical
Students Associations \(IFMSA\)](#)

7) *Credit system*


Requirements:

1. Obtain **20 credits** in one semester OR **45 over 2 semesters.**
 2. Pass all repeated subjects
 3. Follow prerequisites system
- 

Lesson types

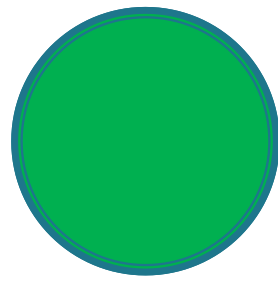
- ▶ **Practice:** Practical lesson. Complete protocols/practical exams to obtain credit.
 - ▶ **Seminar:** Theoretical lesson, class tests and or credit test to obtain credit.
 - ▶ Both of above need to be completed before final exam
 - ▶ **Lecture:** In lecture hall with the whole year group, non-compulsory (but advisable).
- 

Assessments in your courses:

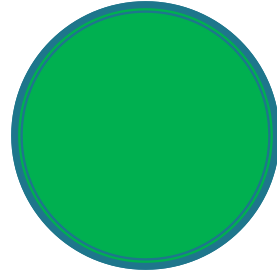
- ▶ **MEDICAL CHEMISTRY** – 3 tests (variable pass mark dependant on teacher)
 - ▶ **BIOPHYSICS** – credit test
 - ▶ **ANATOMY** – Bones test (oral)
 - ▶ **BIOLOGY** – 2 per semester (14/20 to pass)
 - ▶ **FIRST AID** – Final (oral exam)
 - ▶ **CZECH** – Credit test (content depends on teacher)
 - ▶ **MEDICAL TERMINOLOGY (LATIN)** – Credit test (content depends on teacher)
- 

Prerequisites

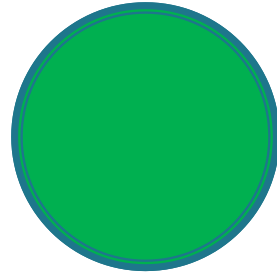
- ▶ A course needed to continue obtain a higher level course.
 - EXAMPLE: To have Anatomy II you need Anatomy I, medical terminology is needed to have anatomy III etc.
 - To take LECTURE (EXAM) you need to first obtain the credits for seminar and practical lessons (dependent on subject)



Med Chem Lecture



Biophysics Lecture



Biology Lecture



Physiology

1st year

2nd year

1st & 2nd semester

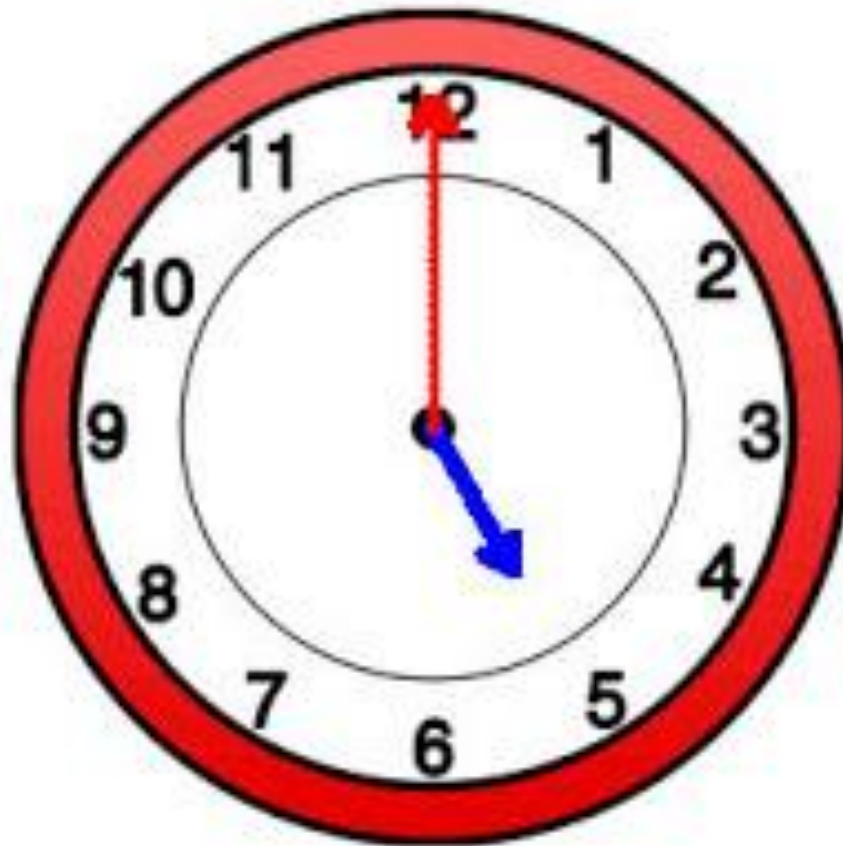
3rd semester



8) Booking exams

no slot reserved by you	details	Mon 25. 1. 2010 08:00 Kamenice 3, biofyzikální ústav, uč. č.309 (both examination and resit), reservations: 7, maximum number of students: 10 open for reservations to Fri 22. 1. 2010 , cancellation possible to Fri 22. 1. 2010 Zkouška začíná v 8,10 písemným testem s mnohočetným výběrem. Studenti s dostatečným počtem bodů budou pokračovat částí ústní. Neúspěch u testu znamená hodnocení zkoušky známkou "F". Posted: 7. 1. 2010 08:46, M. Vágnerová attempt to reserve a slot 🗉
no slot reserved by you	details	Tue 26. 1. 2010 08:00 Kamenice 3, biofyzikální ústav, uč. č.309 (both examination and resit), reservations: 6, maximum number of students: 10 open for reservations to Sat 23. 1. 2010 , cancellation possible to Sat 23. 1. 2010 Zkouška začíná v 8,10 písemným testem s mnohočetným výběrem. Studenti s dostatečným počtem bodů budou pokračovat částí ústní. Neúspěch u testu znamená hodnocení zkoušky známkou "F". Posted: 7. 1. 2010 08:46, M. Vágnerová attempt to reserve a slot 🗉
enrolled		Tue 26. 1. 2010 13:00 Kamenice 3, biofyzikální ústav, uč. č.309 (both examination and resit), reservations: 3, maximum number of students: 10 open for reservations to Sat 23. 1. 2010 , cancellation possible to Sat 23. 1. 2010 The exam starts at 13,10 by written multichoice test. See the instructions published in IS for more details. THIS DATE IS ONLY FOR ENGLISH STUDY Posted: 7. 1. 2010 08:46, M. Vágnerová attempt to reserve a slot 🗉
no slot reserved by you	details	Wed 27. 1. 2010 08:00 Kamenice 3, biofyzikální ústav, uč. č.309 (both examination and resit), reservations: 16, maximum number of students: 20 open for reservations to Sun 24. 1. 2010 , cancellation possible to Sun 24. 1. 2010 Zkouška začíná v 8,10 písemným testem s mnohočetným výběrem. Studenti s dostatečným počtem bodů budou pokračovat částí ústní. Neúspěch u testu znamená hodnocení zkoušky známkou "F". Posted: 7. 1. 2010 08:46, M. Vágnerová attempt to reserve a slot 🗉
no slot reserved by you	details	Thu 28. 1. 2010 08:00 Kamenice 3, biofyzikální ústav, uč. č.309 (both examination and resit), reservations: 8, maximum number of students: 10 open for reservations to Mon 25. 1. 2010 , cancellation possible to Mon 25. 1. 2010 Zkouška začíná v 8,10 písemným testem s mnohočetným výběrem. Studenti s dostatečným počtem bodů budou pokračovat částí ústní. Neúspěch u testu znamená hodnocení zkoušky známkou "F".

17:00!!!!!!



9) Physical Education

Student => course registration and enrollment => scroll to bottom
=> add courses by entering their codes => select FSpS and type p% => click
specify button

[Student](#) | [Grades](#) | [Examinations](#) | [Course registration and enrollment](#) | [Seminar Groups](#) | [Study Materials](#) | [ROPOT \(Revision, Opinion Poll and Testing\)](#)
[Discussion group](#) | [Notebooks](#) | [More applications...](#) ▾

Select courses by entering their codes:

LF

LF
FF Enter several codes separated by spaces. You can also enter part(s) of a code(s) followed
PrF
FSS
PrF allows you to add courses to your registration batch by entering their codes. After you
FI specify', the courses found will be added to the table above. Select the courses you want to
PdF r (using the check boxes situated to the left of codes) and click on 'Save changes'.
FSpS to enroll in a course offered at some other faculty, specify the latter using the menu on the
ESF code search is case-insensitive. You can also enter only part of code followed by '%'. When
CST about the code or name of the course you want to enroll in, you might want to try to browse
Course Catalogue or lists of basic interfaculty courses (to do so use, for instance, the reference on
the main registration page).

[Student](#) | [Grades](#) | [Examinations](#) | [Course registration and enrollment](#) | [Seminar Groups](#) | [Study Materials](#) | [R Discussion group](#) | [Notebooks](#) | [More applications ...](#) ▾

The figure to the left of '/' Represents the number of students Currently Requesting enrollment while the figure to the right of it stands for the maximum number of students allowed to enroll in the course. Provided the latter is unlimited, '-' is used.


<input type="checkbox"/>	FSpS: P902 ↗ Physical Education - Fitnessyoga	54 / -
<input type="checkbox"/>	FSpS: P903 ↗ Physical Education - Intermediate Volleyball	20 / -
<input type="checkbox"/>	FSpS: P904 ↗ Physical Education - Climbing	25 / -
<input type="checkbox"/>	FSpS: p912 ↗ Physical Education - Pilates	56 / -
<input type="checkbox"/>	FSpS: p914 ↗ Physical Education - Non-traditional sports games	8 / -
<input type="checkbox"/>	FSpS: P916 ↗ Physical Education-Applied table tennis - Showdown for students with visual disabilities	0/8
<input type="checkbox"/>	FSpS: p917 ↗ Physical Education - Alternative physical activities and games	2/10
<input type="checkbox"/>	FSpS: p919 ↗ Physical Education - Health Education	24 / -
<input type="checkbox"/>	FSpS: P920 ↗ Physical Education - Swimming for students with physical disabilities	1/6

=> select course of your choice =>
 click save changes

NB!!!! Later in semester you will need to register further for a specific seminar group

10) Library

aleph.muni.cz

 **Catalogue of the MU - Readers Not logged in**

[Login](#) [Search / Index](#) [Adjustment](#) [Help](#)

Basic Search

Enter a word or phrase	<input type="text"/>
Field to search	All Fields <input type="button" value="v"/>
Words adjacent?	<input type="radio"/> No <input type="radio"/> Yes
Only search the library catalog:	Catalogue of the MU <input type="button" value="v"/>
<input type="button" value="OK"/> <input type="button" value="Vyčistit formulář"/>	

[More search settings](#)

[SCAN: Catalogue of MU](#)

[Thematic search in the MU Libraries](#)

[Electronic and Information Resources at MU \(MU Metalib \)](#)

[Search the archive Theses IS MU](#)



Please identify yourself:

University Number/ID:

UČO

Verification:

Secondary PASSWORD

Please use your personal identification number (UČO) and Secondary IS MUNI as your password to sign into your account.

If you don't know your Secondary IS MUNI password, you can set your new password using secured IS MUNI application -- [Changing S](#)

External patrons should ask for WebOPAC password on the library shelf.

If you have any questions or comments, let us know on your e-mail addresses knihovna@{phil,fi,fsp,....}.muni.cz or webmaster@aleph.muni.cz

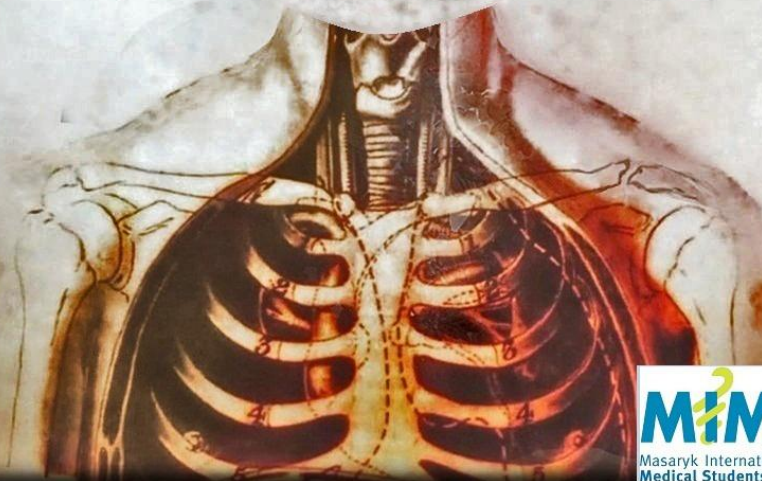


11) *Nostrifikace*

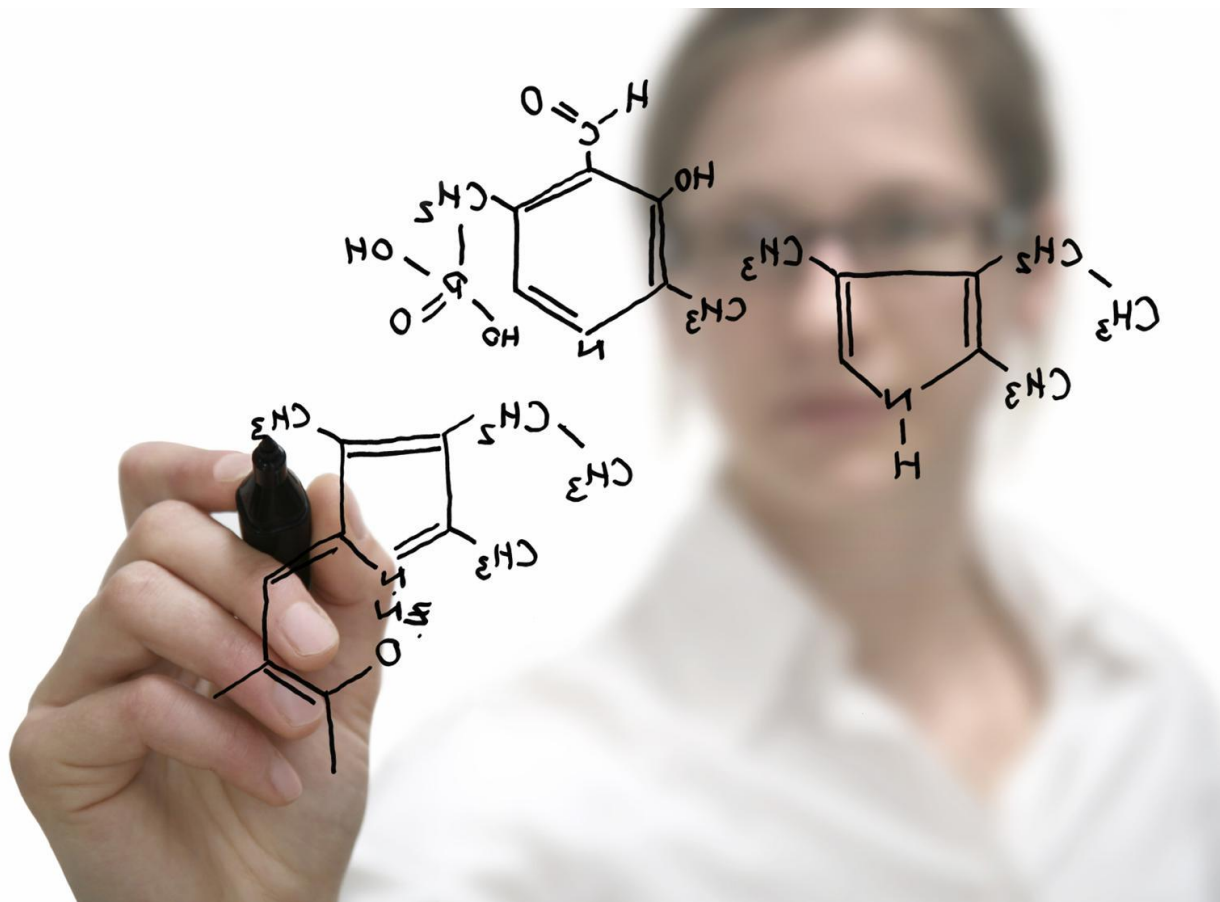
1. Certification that your education is equivalent to that of Czech Republic.
2. Obtain Apostilla from home country education department/Lawyer
3. Group this together with the hours of each subject along with the syllabi of the subjects you took.
4. Take this to an official translator (in Brno we can recommend Aspina Ltd. <http://www.aspena.cz/en/> or Moravia Translations Ltd. <http://www.moraviatranslation.cz/>), ABACK linguistic consultants at Rašínova 2. (check mimsa.cz)
5. make an appointment with Mrs. Dagmar Kostrhůnová, department of education 'Krajský úřad Jihomoravského kraje'
Address: Cejl 73, 2nd floor, door number 226, (tram no. 4)
Email: kostrhunova.dagmar@kr-jihomoravsky.cz phone:
+420 541 653 527.

ANATOMY SESSIONS

**Coming soon
this semester**



Organic chemistry session



coming soon this semester

BOOKSALE



ON SALE!

Clinically Oriented Anatomy by Keith L.
Moore

THIEMES : Locomotor
Internal Organs

Basic Histology by Junqueira

Harper's Biochemistry

