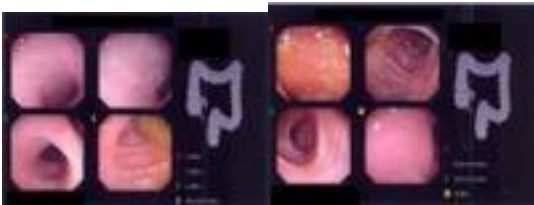


Case 2

26-yo caucasian female (CF) with a negative past medical history (PMH) comes to the GI lab for a colonoscopy referred by her Primary Care Physician (PCP) with the Chief Complaint (CC): abdominal pain and diarrhea for 2 months. She had noticed some mucus in her stools but no blood. No weight loss.

What do you think is going on?

Colonoscopy:



Loss of the normal vascular pattern, granular mucosa, a lot of mucus.

What labs would you order?

How would you treat this patient?