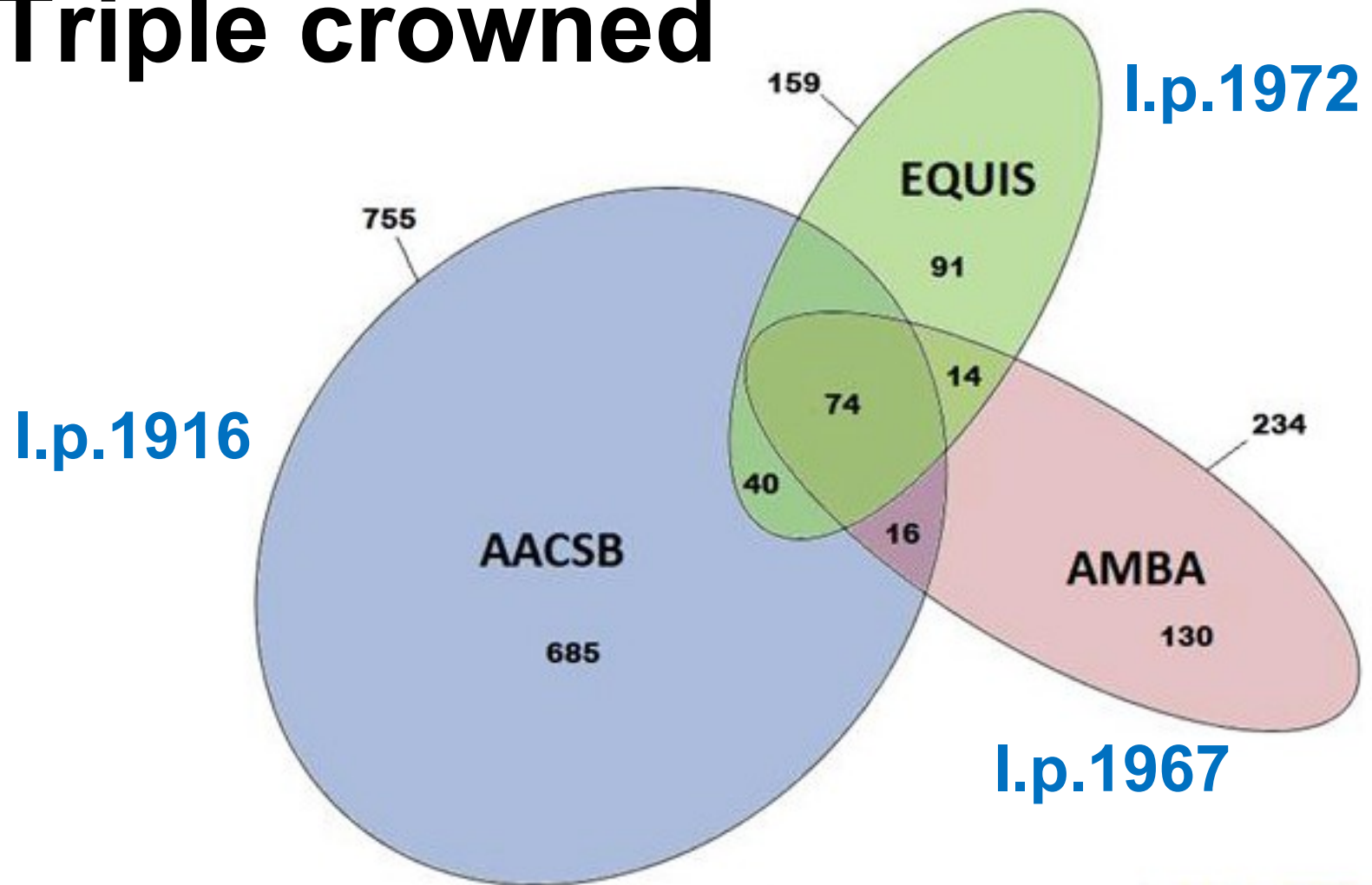
The background features several large, overlapping, semi-circular arcs in shades of blue and grey, creating a modern, abstract design.

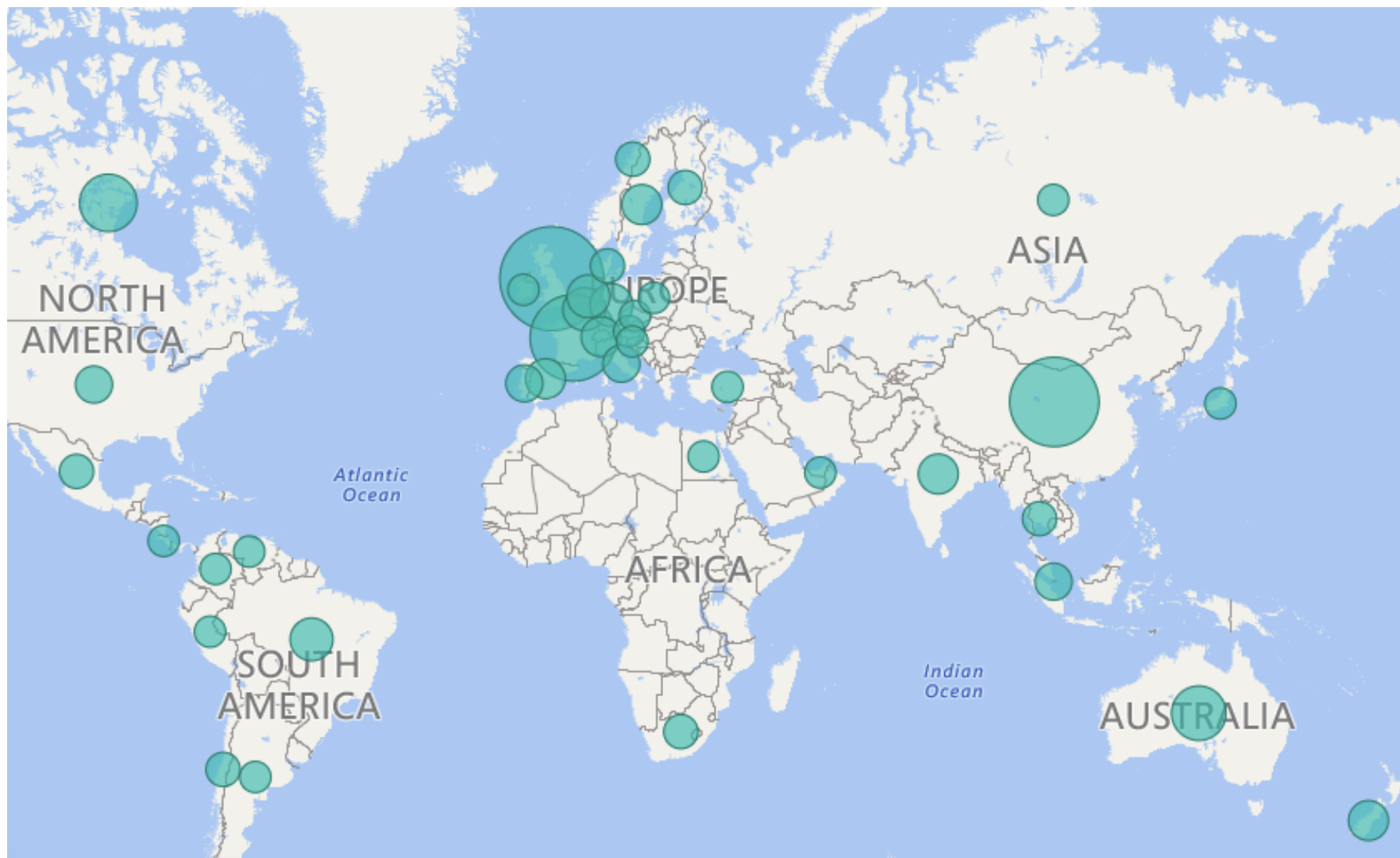
# Mezinárodní akreditace: vyhodnocení jednoho úspěšného procesu

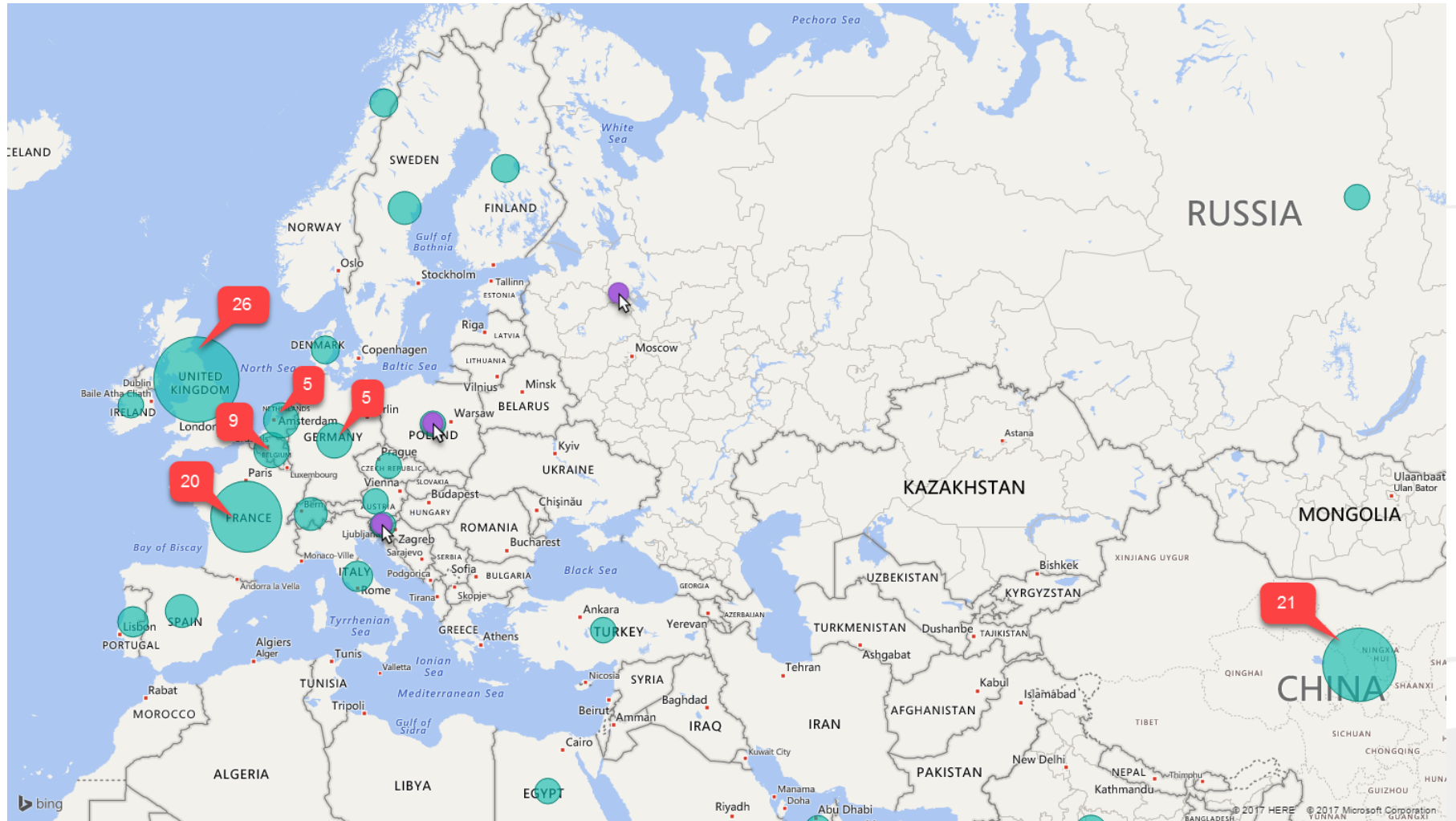
***doc. Ing. Jiří Hnilica, Ph.D.***  
*prorektor pro mezinárodní vztahy a IS*

*Prezentace pro HKVŠ, 5. 5. 2017*

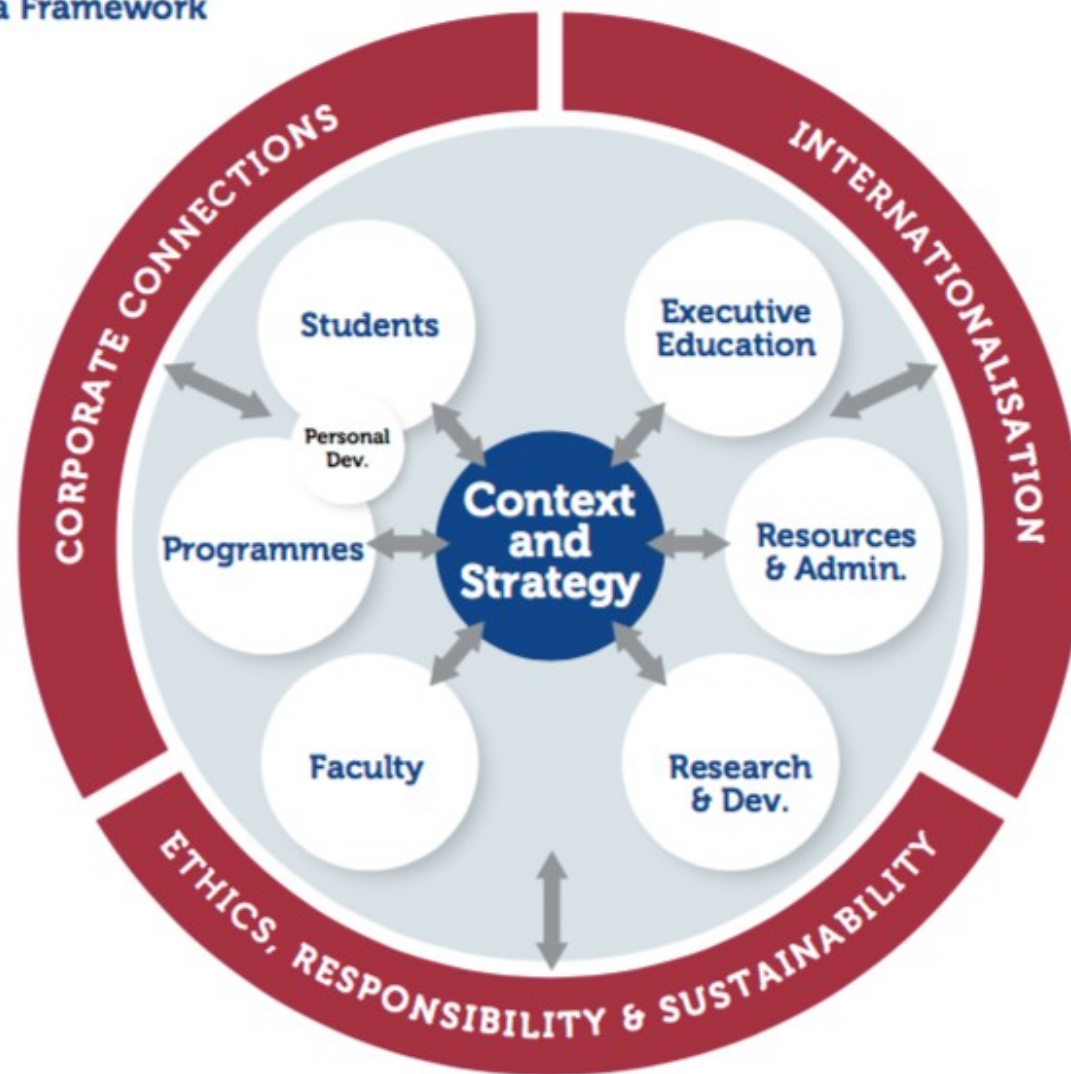
# Triple crowned

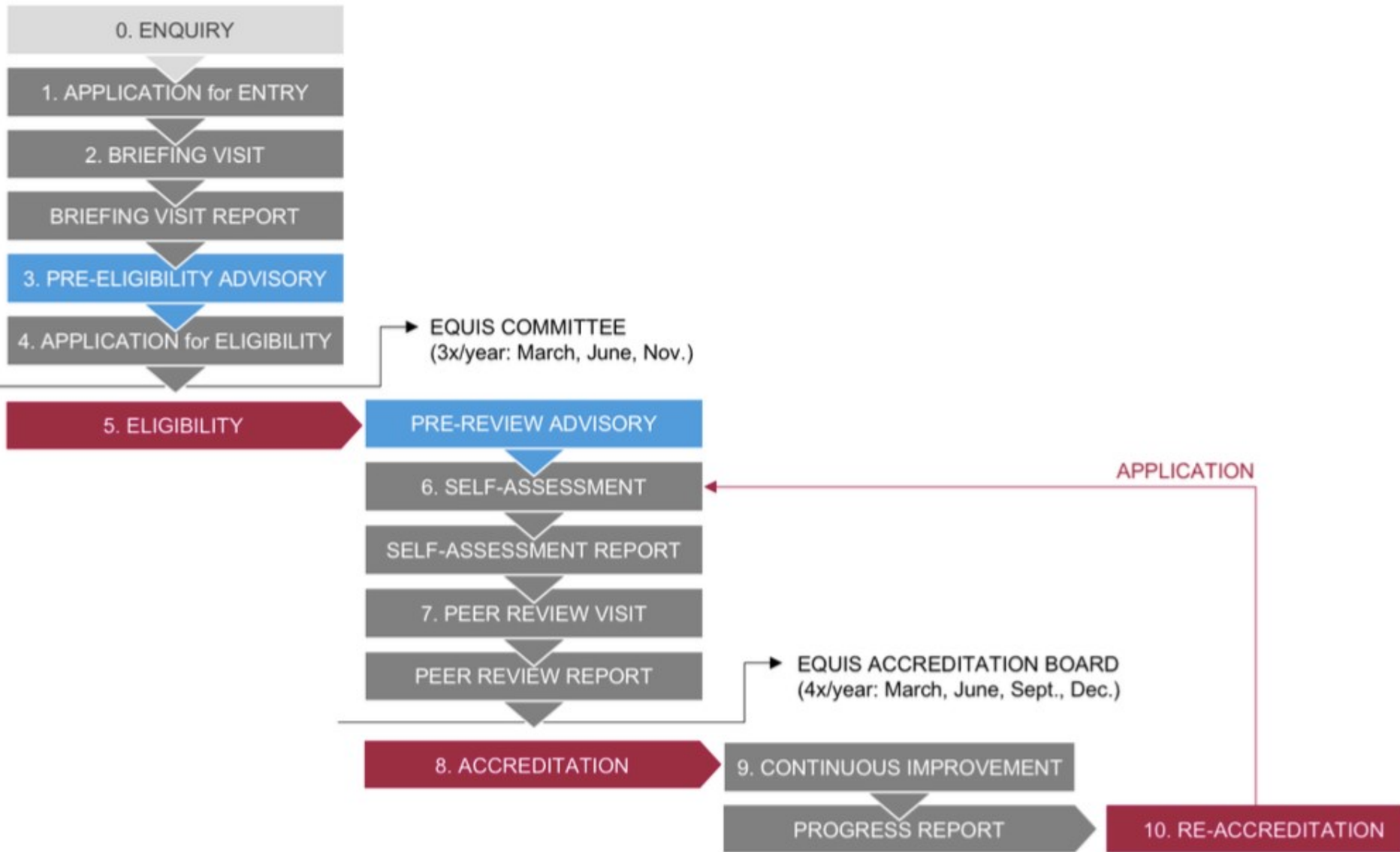






## EQUIS Criteria Framework





## 2. PROGRAMMES

OVERALL PROGRAMME PORTFOLIO	
<b>2.1</b>	<b>Coherence of the School's portfolio of programmes</b>
	<ul style="list-style-type: none"> <li>• Fit with overall strategic objectives</li> <li>• Balance of programme offerings at different degree levels</li> </ul>

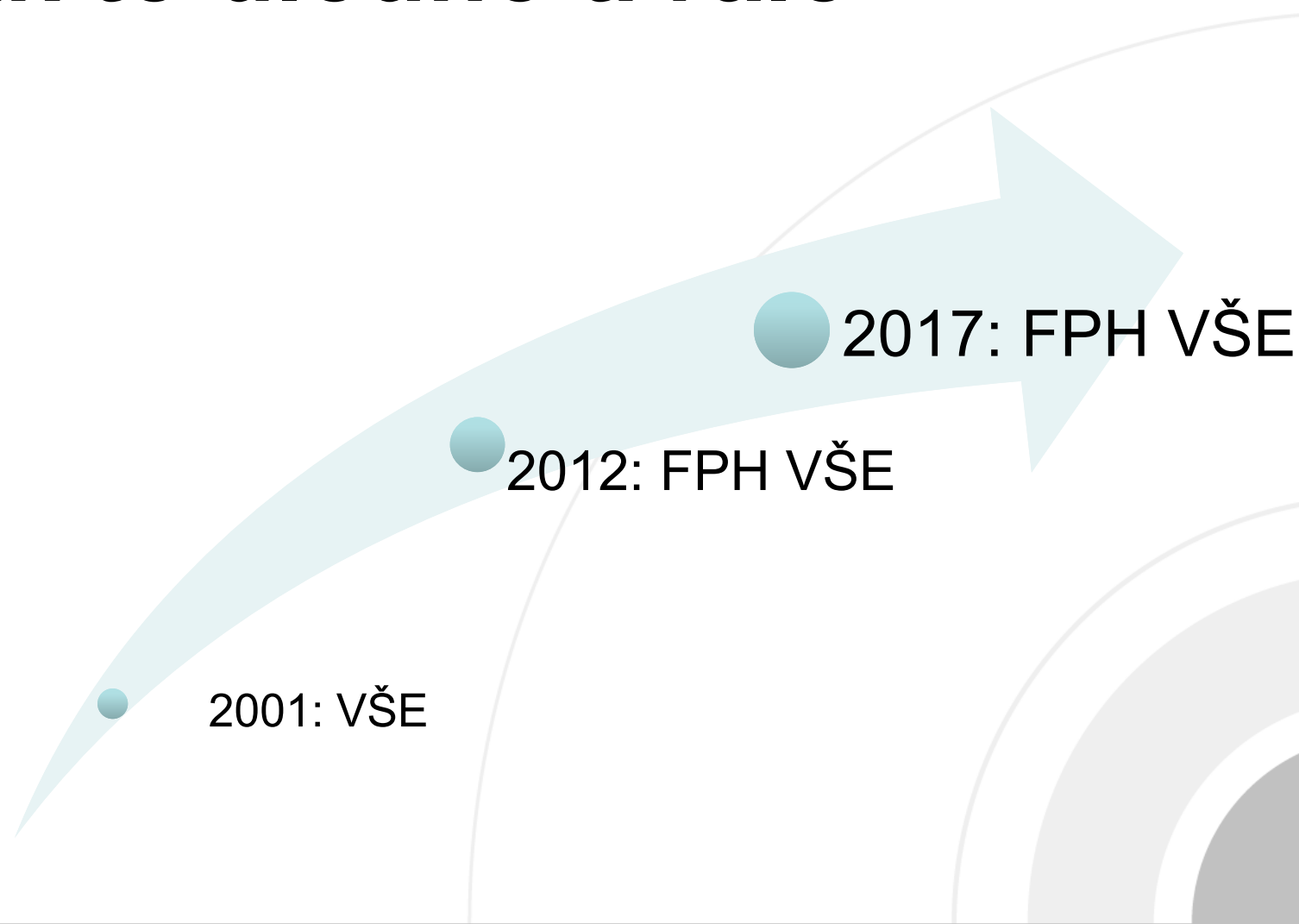
<b>2.2</b>	<b>Quality of the programme management systems</b>
	<ul style="list-style-type: none"> <li>• Quality of programme management and administrative teams</li> <li>• Clear division of responsibilities</li> <li>• Processes for allocating faculty to programmes</li> </ul>
<b>2.3</b>	<b>Programme design</b>
	<ul style="list-style-type: none"> <li>• Programme design and revision processes</li> <li>• Appropriateness of objectives and intended learning outcomes (ILOs)</li> <li>• Programme content and coverage</li> <li>• Programme innovation</li> </ul>
<b>2.4</b>	<b>Higher Education skills</b>



		Overall Quality Evaluation			
		ABOVE standard	MEETS standard	BELOW standard	N/A
Chap 1	Context, Governance and Strategy				
1.1	Environment				
1.2	Institutional status				
1.3	External governance				
1.4	Internal governance				
1.5	Autonomy				
1.6	Mission, vision and values				
1.7	Current strategic positioning				
1.8	Strategic direction and objectives				
1.9	Strategic planning				
1.10	Quality assurance				
1.11	Internationalisation				
1.12	Ethics, Responsibility and Sustainability				
1.13	Corporate connections				
Chap 2	Programmes				
	<b>OVERALL PROGRAMME PORTFOLIO</b>				
2.1	Coherence of the School's portfolio of programmes				
2.2	Quality of the programme management systems				
2.3	Programme design				
2.4	Higher Education skills				
2.5	Acquisition of managerial skills				
2.6	Programme delivery				
2.7	Student assessment				
2.8	Quality assurance systems				
2.9	International attractiveness				
2.10	International outreach				
2.11	Ethics, Responsibility and Sustainability				
2.12	Corporate relevance				
	<b>SELECTED SAMPLE PROGRAMME</b>				
2.13	Programme design				
2.14	Quality of students				
2.15	Programme delivery				
2.16	Student assessment				
2.17	International relevance				



# Jak to dlouho trvalo



## **ADMINISTRATIVE FEES**

### **Application Fee: 10.050 €**

Invoiced upon receipt of the Application Form for Entry to EQUIS and Datasheet. This fee is **also** payable by Schools entering a re-accreditation cycle.

### **Eligibility Fee: 10.050 €**

Invoiced after positive eligibility decision by the EQUIS Committee and due 30 days after the date on which the Committee granted Eligibility.

This fee is charged **only** to Schools in the initial accreditation cycle, not to those starting a re-accreditation cycle.

### **Review Fee: 16.750 €**

Due 30 days before the School is due to be presented to the EQUIS Accreditation Board for (re-) accreditation.

### **Accreditation Fee**

- If (re-) accreditation for 5 years: 16.750 €
- If (re-) accreditation for 3 years: 10.050 €
- If non-accreditation: 0 €

The accredited schools have 2 options regarding the final payment:

### 3. Recommendation to the Awarding Body

In view of the knowledge about the School that the PRT has been able to gather, it recommends that the **Faculty of Business Administration, in its present situation and under the current EQUIS criteria, be granted EQUIS Accreditation for three years.**

The PRT considers that the following items are the central issues for improvement:

- Improve the internationalisation strategy with particular focus on governance, faculty, research and students.
- Develop a comprehensive faculty management strategy and system. Faculty workload management, promotion system, integration of research into faculty workload, etc. need to be improved.
- Clarify the role of executive education within FBA's overall strategy.
- Implement a real financial management system for supporting FBA's ambitious strategic plan.

# Proč?

1. odlišení se
2. zavedení systému řízení fakulty dle standardů kvalitních zahraničních business škol

**Děkuji za pozornost**

