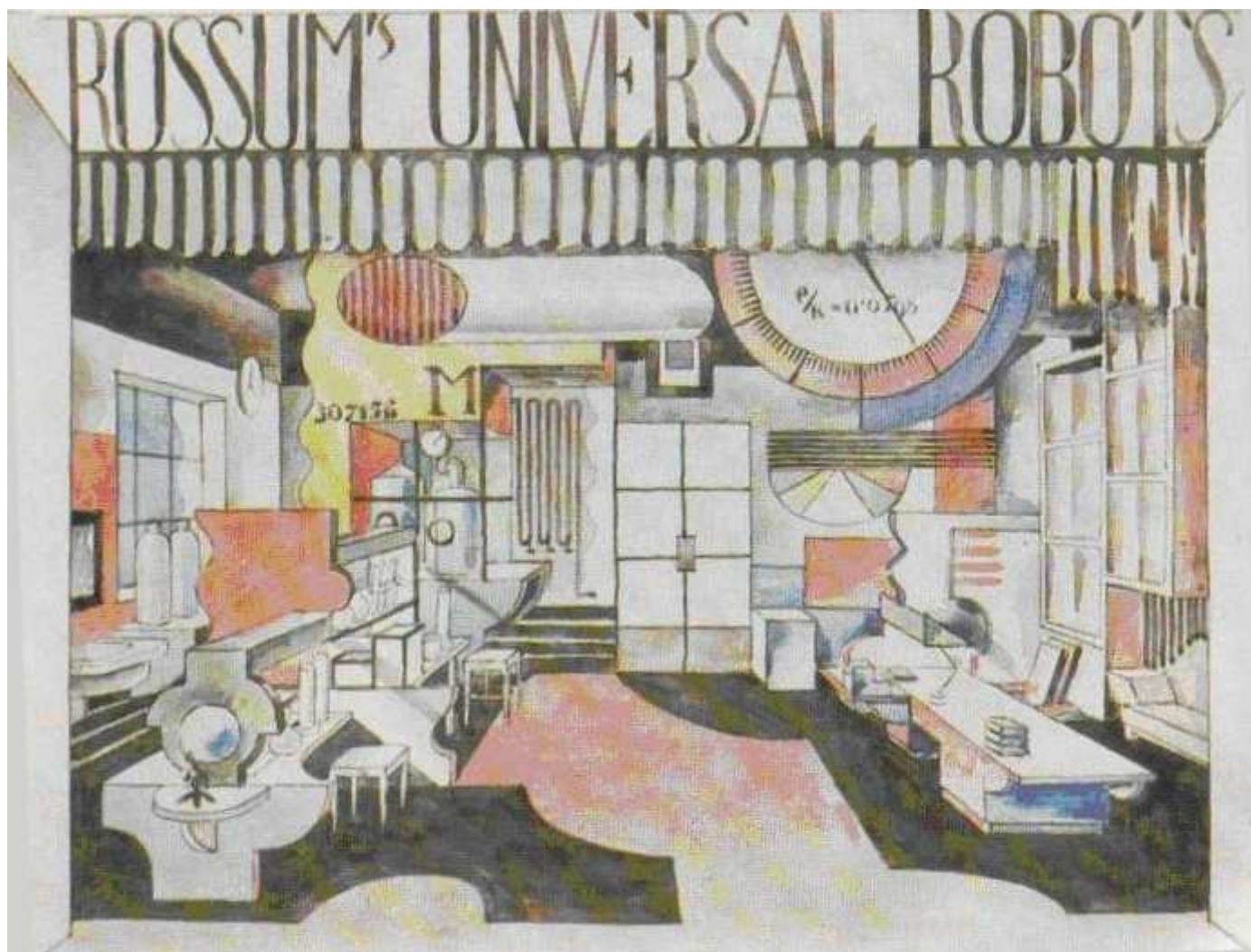


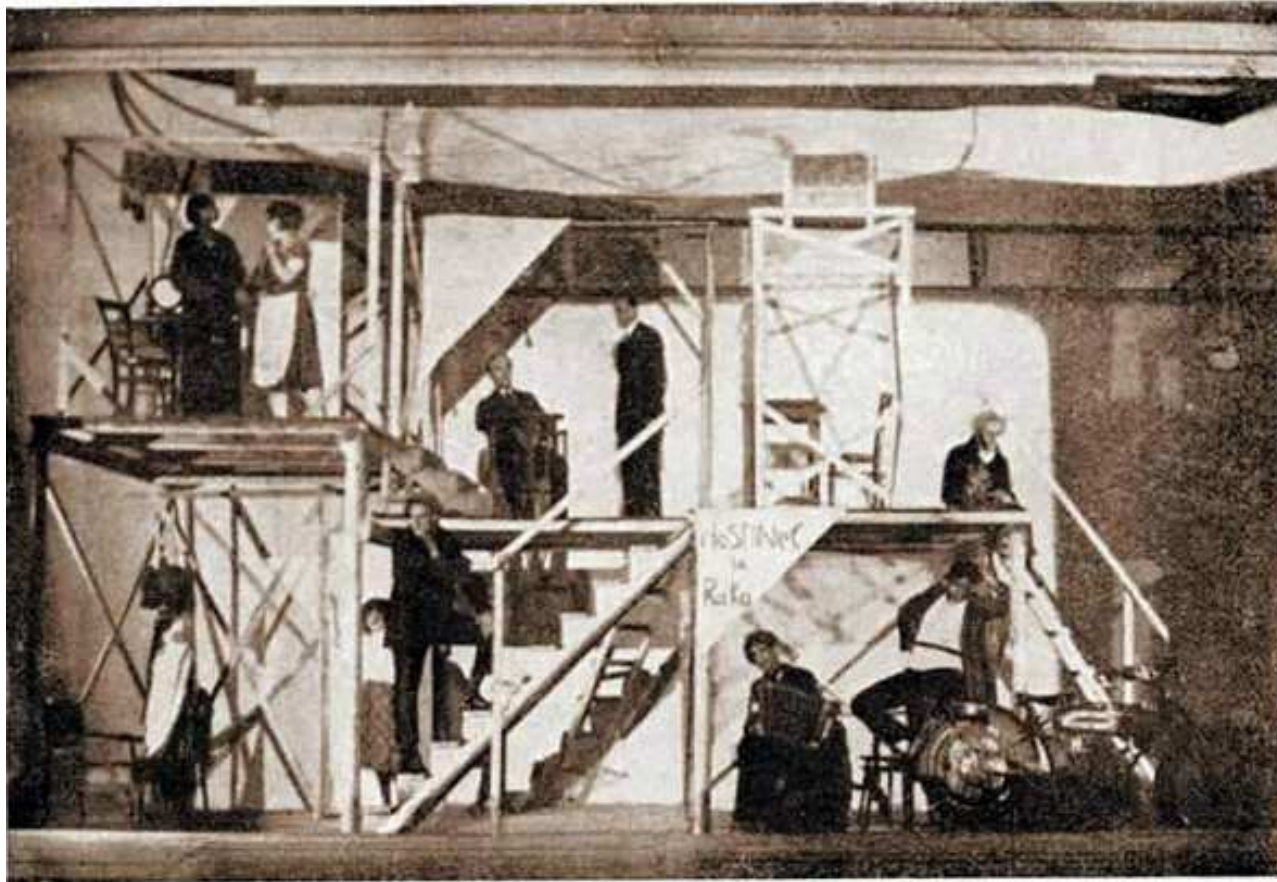
Hofman's stage design  
for Verhaeren's  
THE DAWN  
(Municipal Theatre,  
Prague, 1920;  
dir. K. H. Hilar)



Feurstein's stage design for  
Čapek's RUR  
(National Theatre, Prague,  
1921; dir. V. Novák)



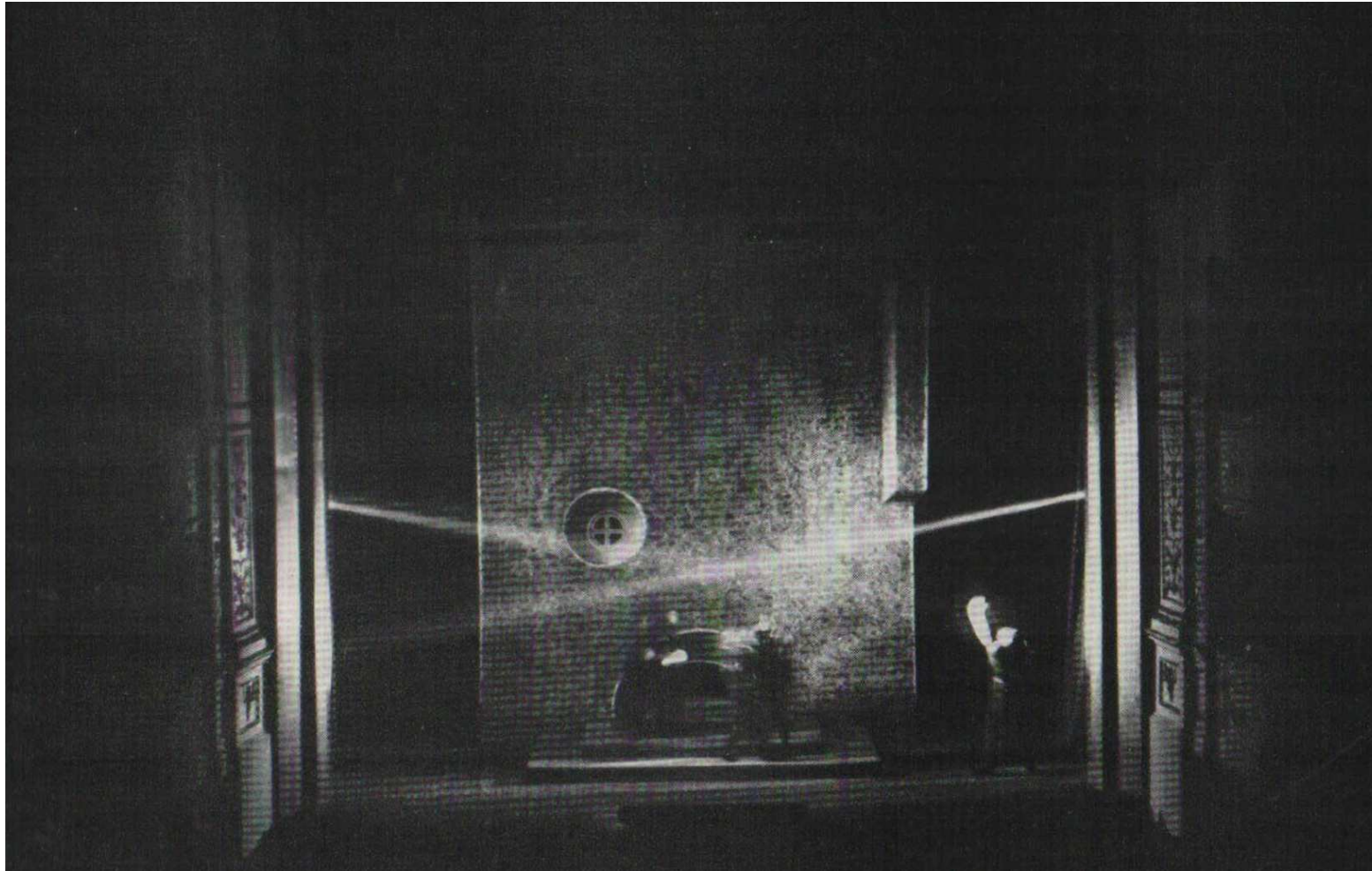
Hofman's stage design for  
Dostoevsky's CRIME AND  
PUNISHMENT  
(Municipal Theatre, Prague, 1928;  
dir. J. Bor)



Gamza's stage design for his production of Langer's play FRINGE AREA (Czech Studio 1925)



Arch. Heythum's stage construction for Aristophanes' WOMEN CELEBRATING THESMOPHORIA (Youth Theatre Prague 1926, dir. J.Frejka)



Scene from  
Shakespeare's  
HAMLET  
(National Theatre,  
Prague, 1926; dir.  
K. H. Hilar, stage  
design V. Hofman)



Scene from Voskovec  
and Werich's VEST  
POCKET REVUE  
(Liberated Theatre  
Prague, 1927)



Hoffmeister's stage design  
for his play BRIDE  
(Liberated Theatre Prague  
1927, dir. J. Honzl)

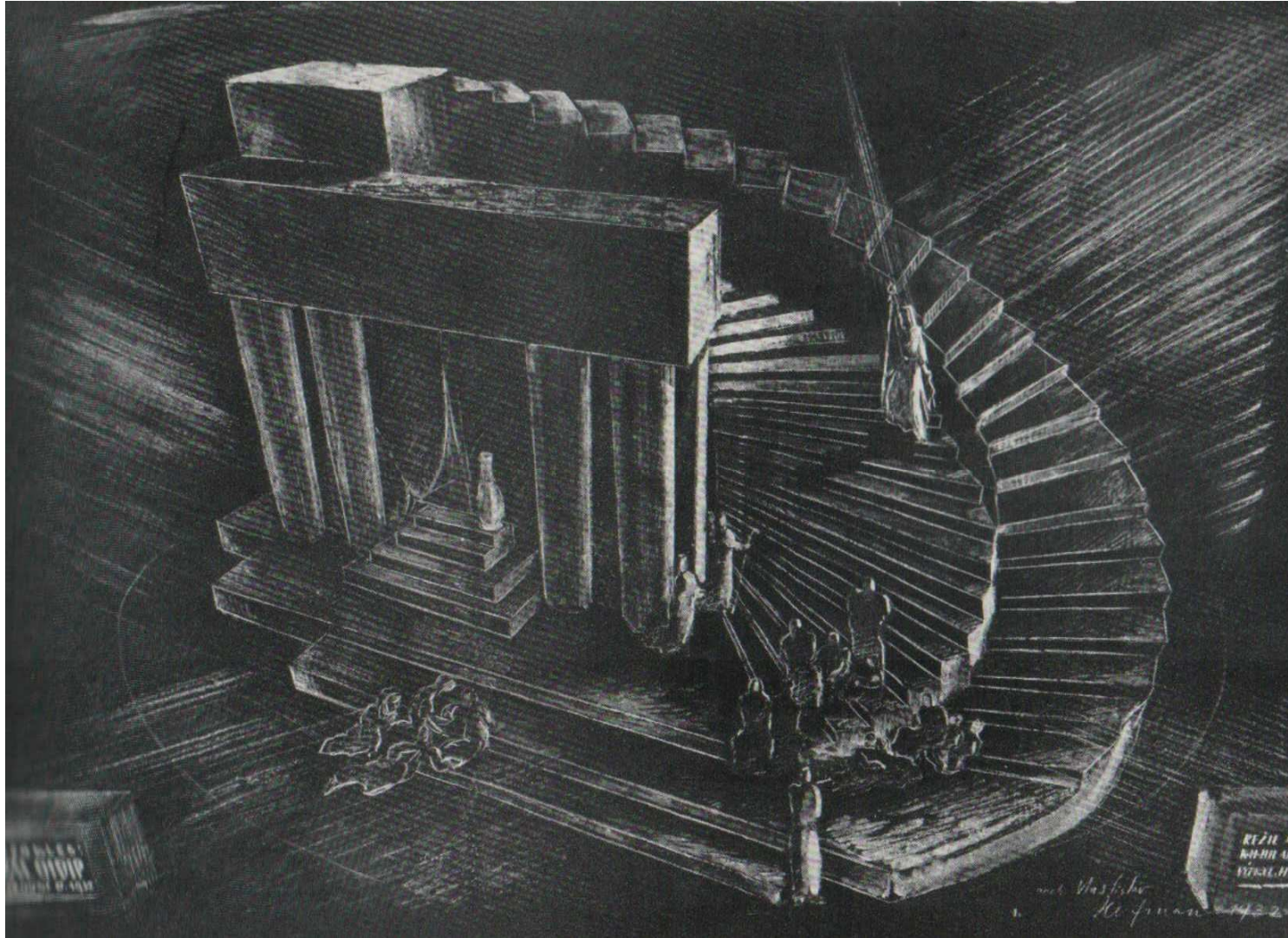




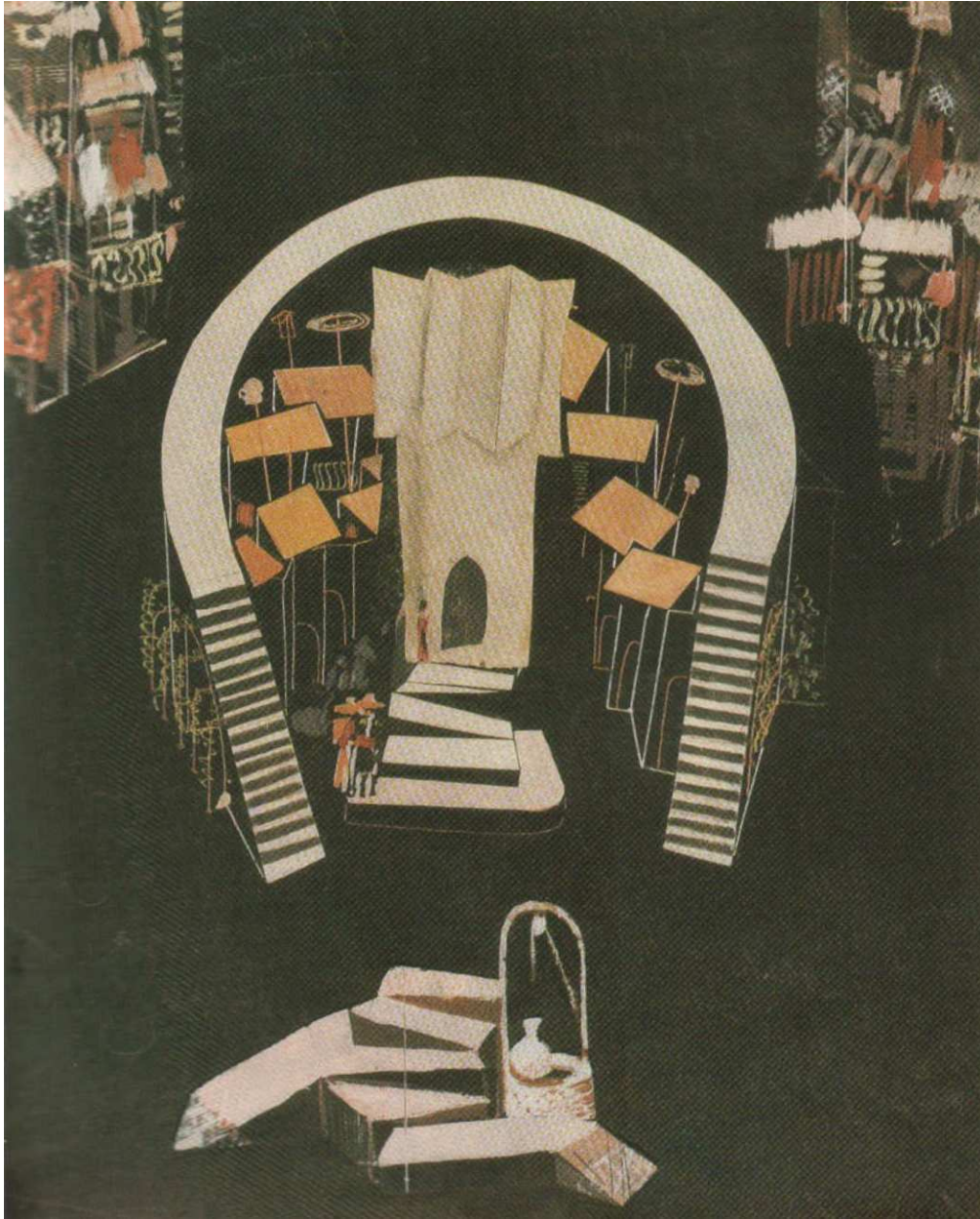
Scene from Jarry's KING  
UBU (Liberated Theatre  
Prague 1928, dir. J. Honzl,  
stage design J. Štyrský)



Scene from the production of the Synge's play THE PLAYBOY OF THE WESTERN WORLD (Dada Theatre Prague, 1928, dir. J. Frejka, Stage design K. Šourek)



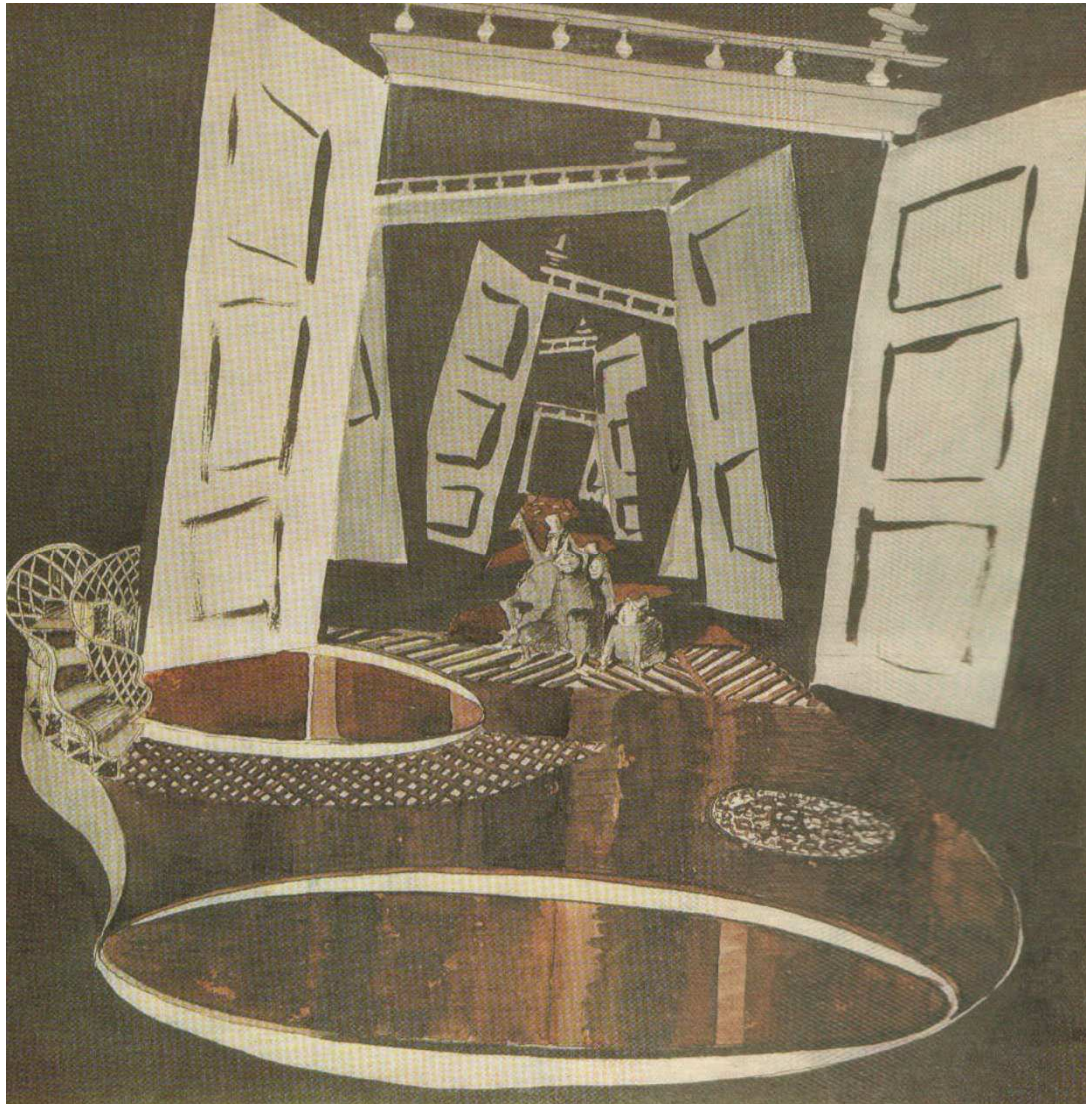
Hofman's stage design  
for Sophocles'  
OEDIPUS THE KING  
(National Theatre,  
Prague, 1932; dir. K. H.  
Hilar)



Tröster's stage design for de Vega's  
FUENTE OVEJUNA  
(National Theatre, Prague, 1935; dir. Jiří Frejka)



Scene from Lope de Vega's  
FUENTE OVEJUNA  
(National Theatre, Prague,  
1935; dir. J. Frejka, Stage  
design F. Tröster)



Tröster's stage design for Gogol's play  
THE GOVERNMENT INSPECTOR  
(National Theatre, Prague, 1936; dir. Jiří Frejka)

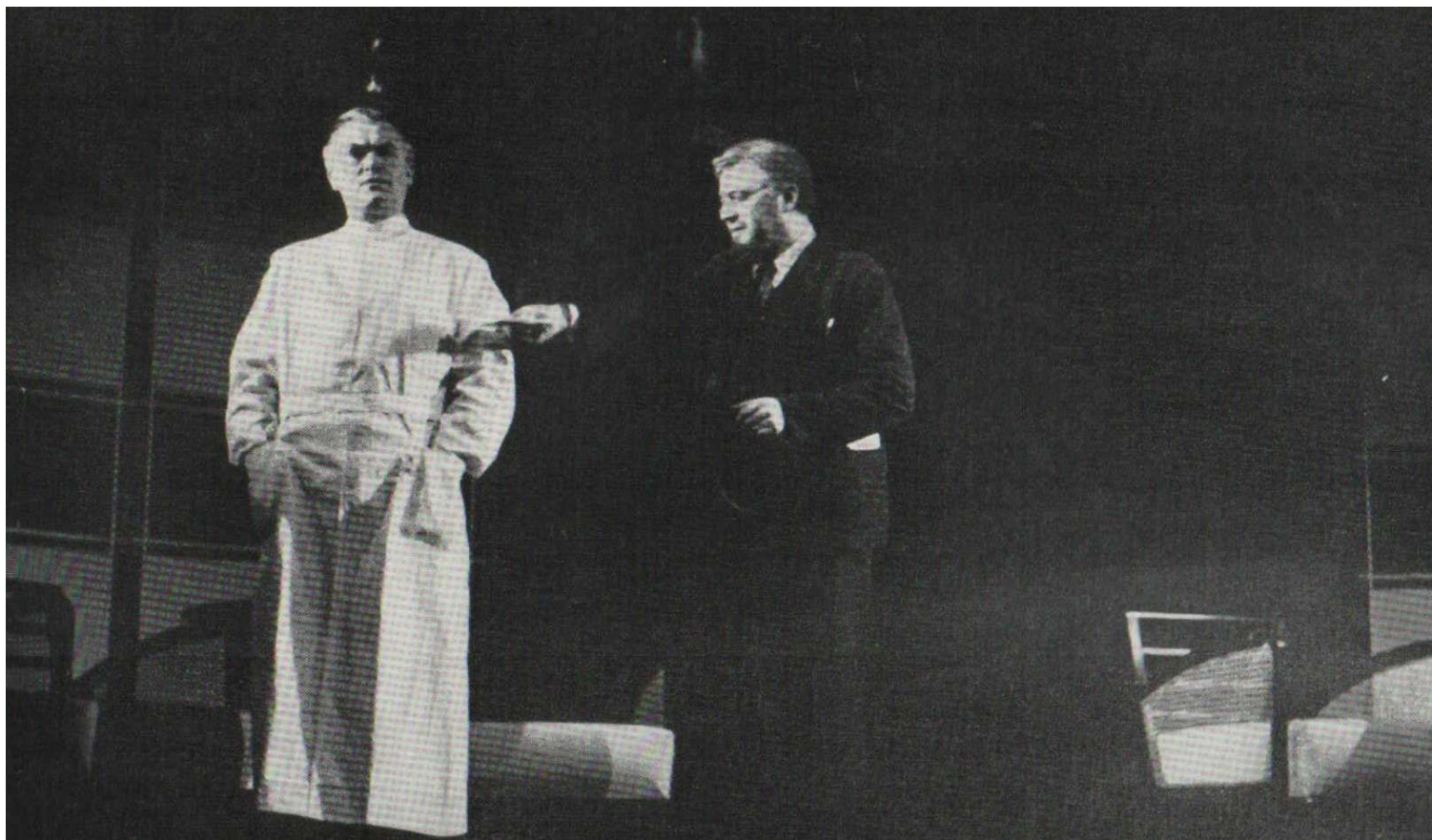


Scene from  
Beuamarchaise'  
BARBER OF SEVILLE  
(D'37 Theatre, Prague,  
1936, dir. E.F.Burian,  
stage design M. Kouřil)

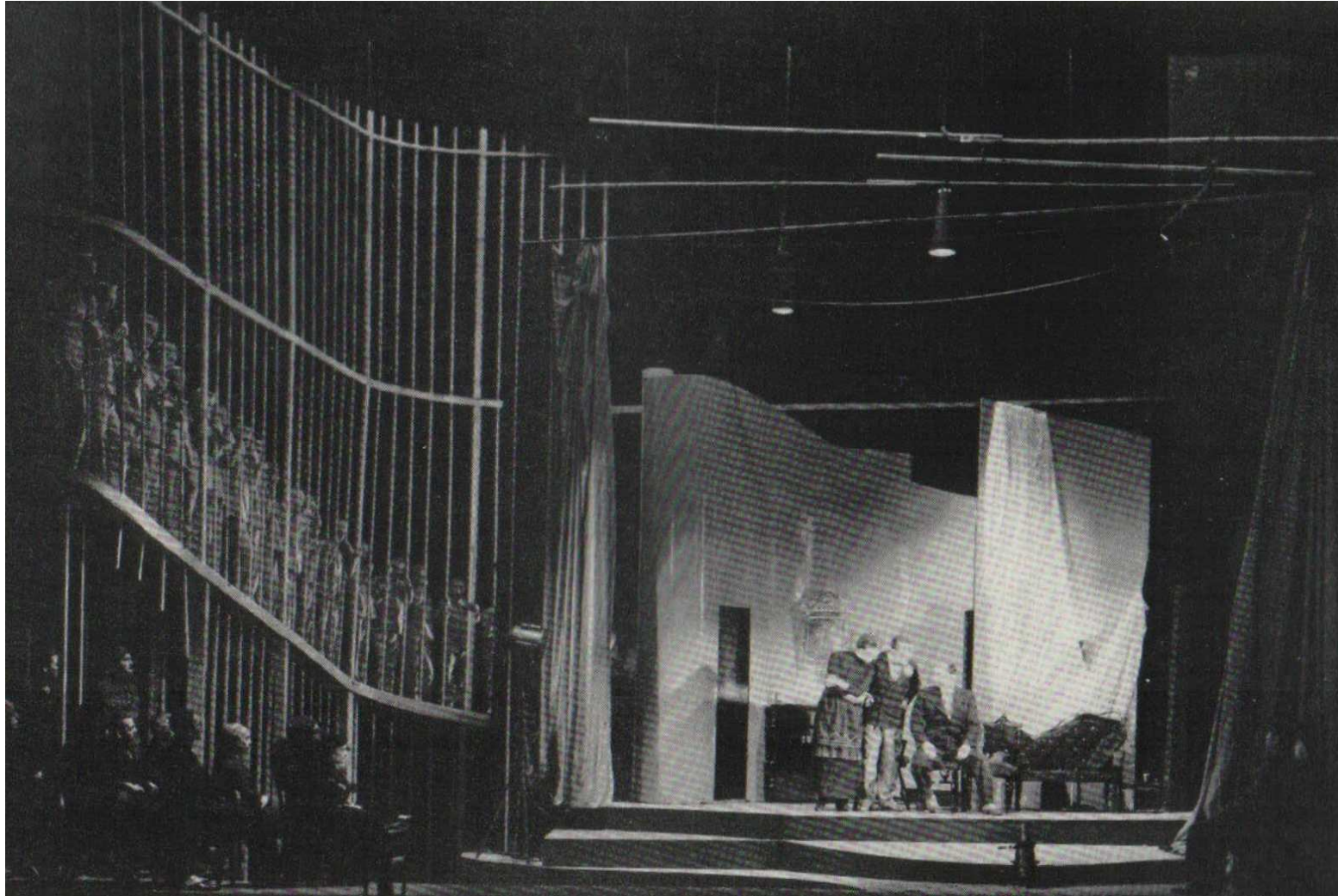


Scene from Macha's  
MAY  
(D'35 Theatre,  
Prague, 1935; dir. E.  
F. Burian, stage  
design M. Kouřil, J.  
Raban, J. Novotný)

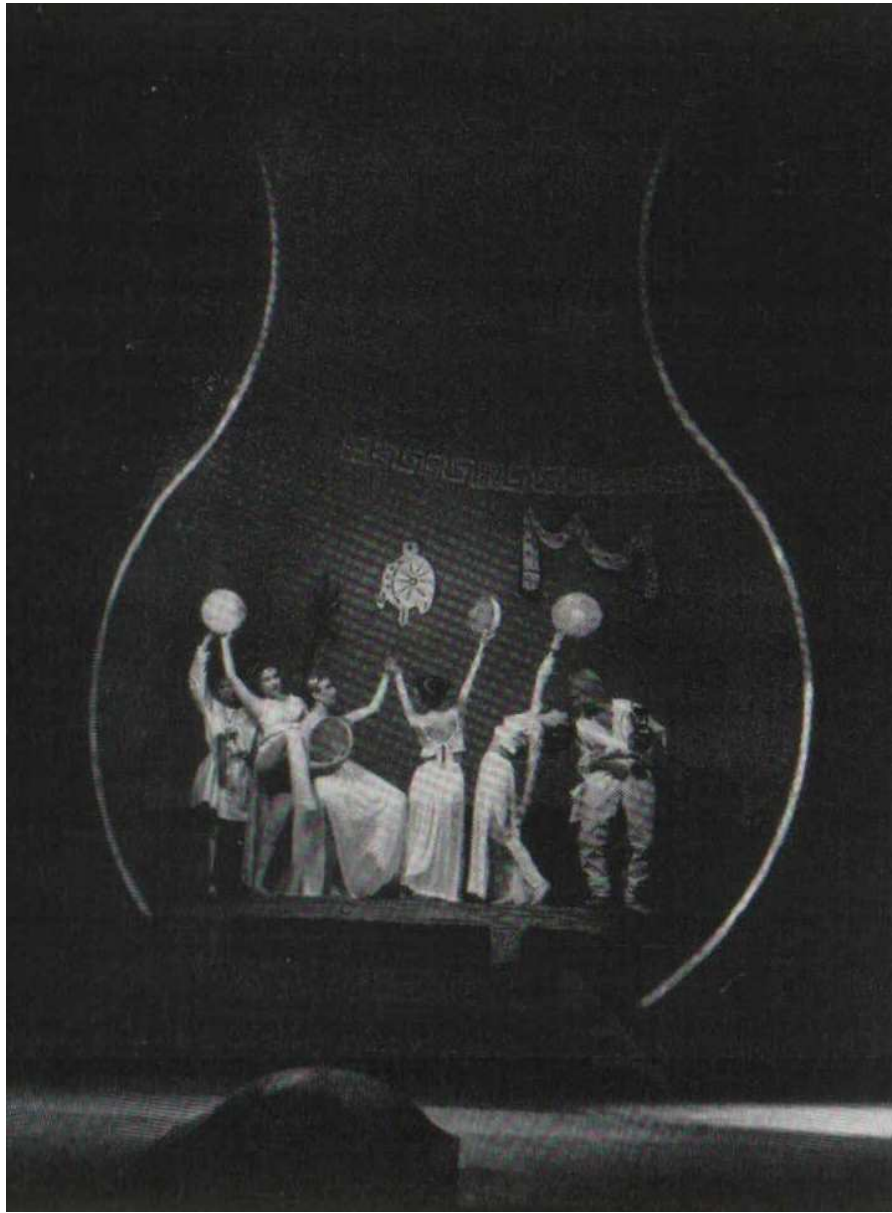




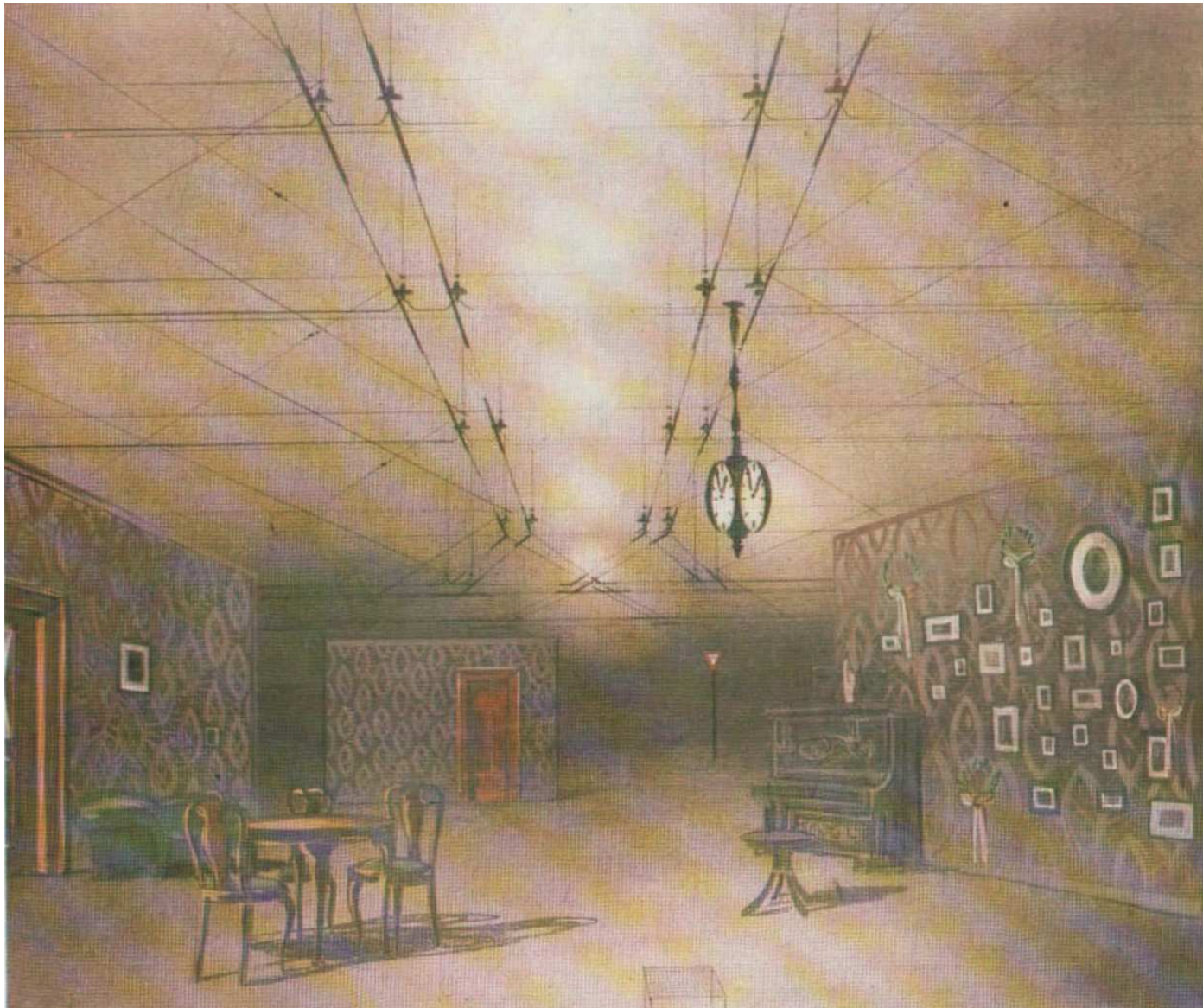
Scene from Čapek's  
WHITE PLAGUE  
(National Theatre,  
Prague, 1937; dir. K.  
Dostal)  
B. Karen (left) as  
Sigelius and Hugo  
Haas as Dr. Galén



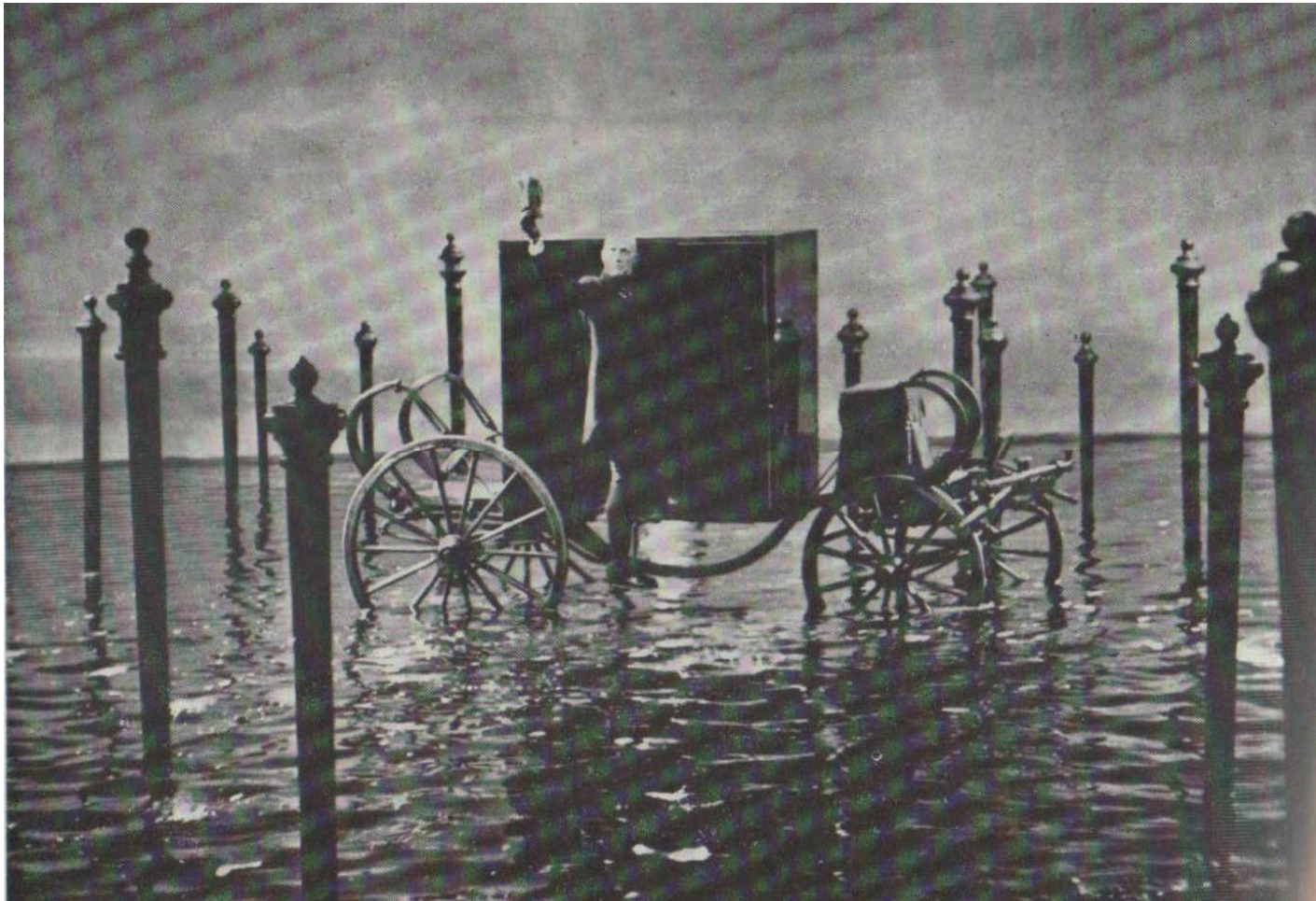
Scene from  
Langer's play  
SEVENTY-TWO  
(Municipal Theatre,  
Prague, 1937; dir.  
B. Stejskal, stage  
design J. Sládek)



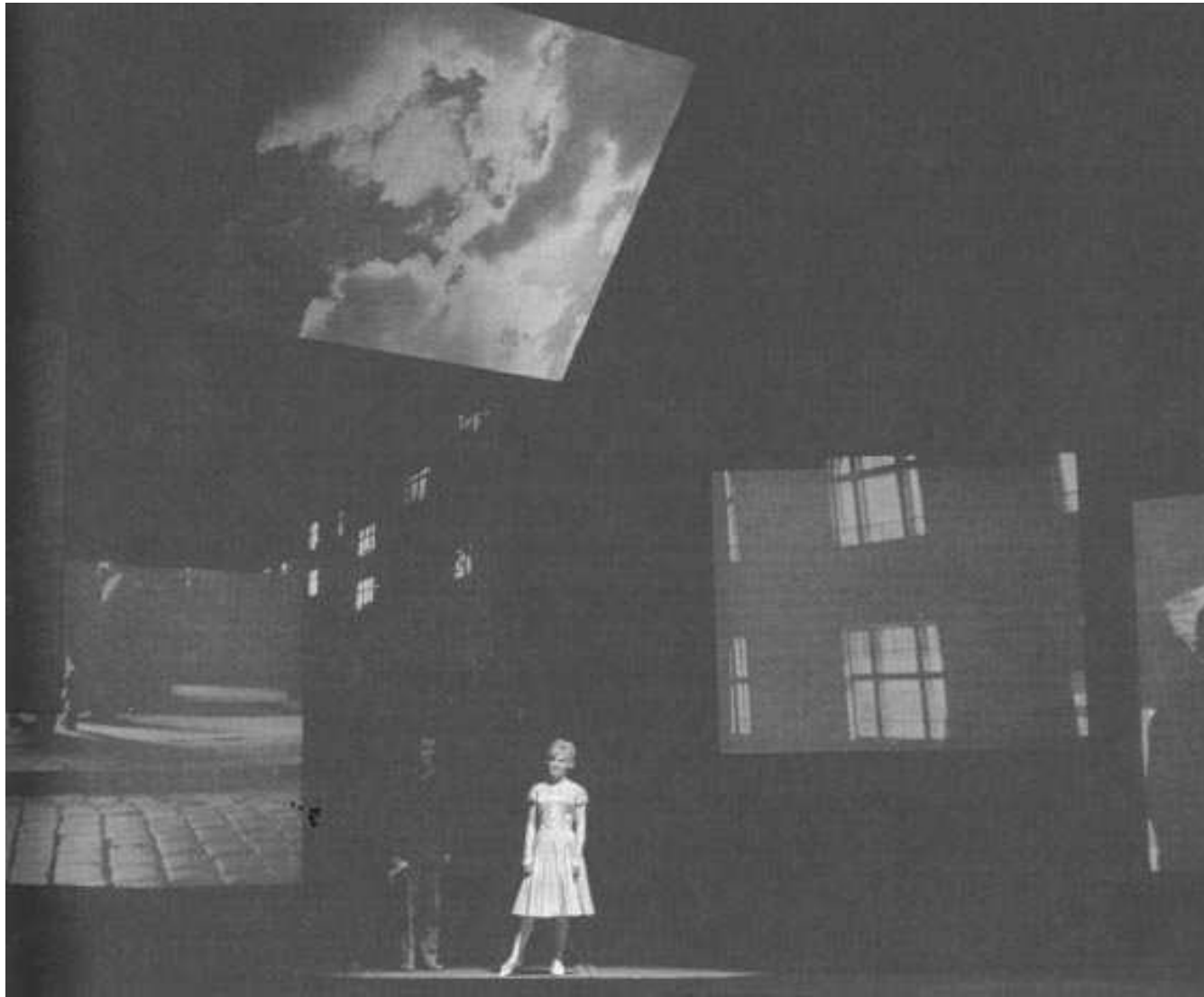
Scene from Plautus' comedy PSEUDOLUS  
(National Theatre Prague, 1942; dir. J. Frejka, stage design Jiří  
Trnka)



Svoboda's stage design for  
Osborne's THE COMIC  
(Tylovo Theatre, Prague, 1957, dir.  
A. Radok)



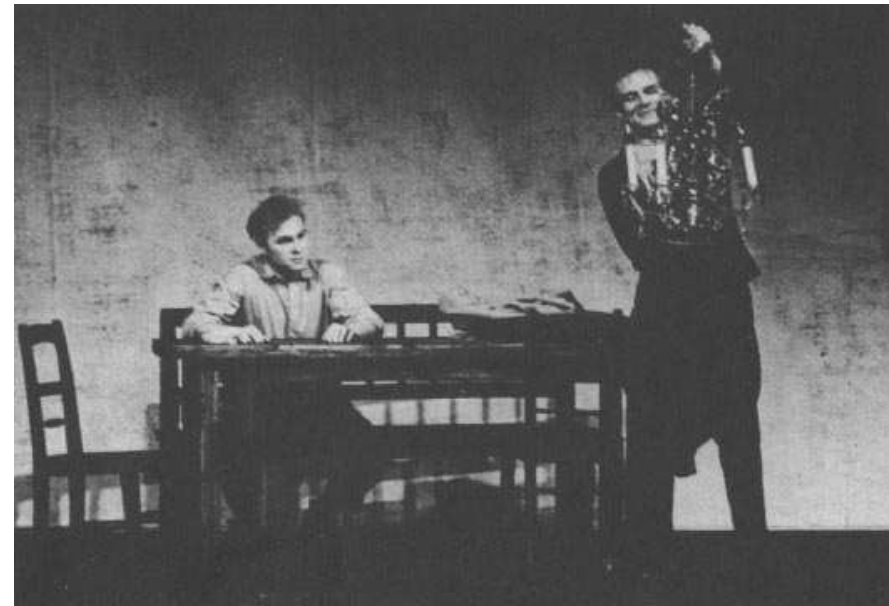
Scene from Offenbach's  
HOFFMANN'S TALES  
(Laterna Magika, Prague,  
1963, dir. A. Radok, stage  
design Jos. Svoboda)



Scene from Topol's play THIER  
DAY (Tylovo Theatre 1959, dir.  
O.Krejča, stage design Jos.  
Svoboda)

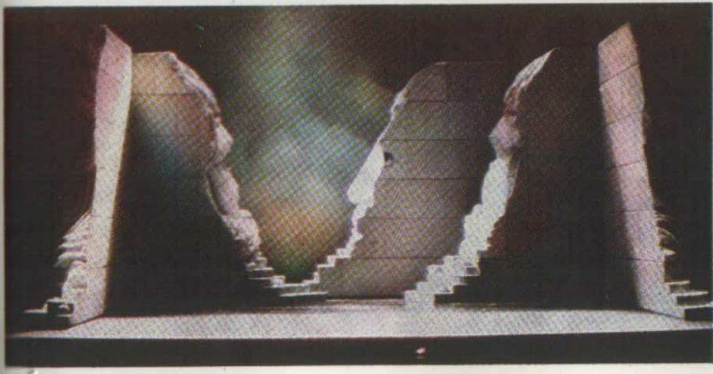
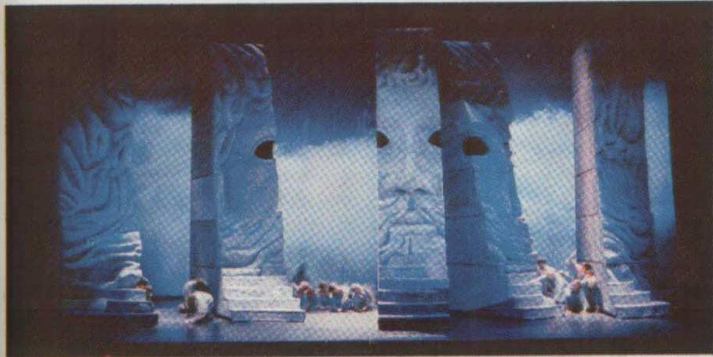


Scenes from Topol's END OF CARNEVAL (Tylovo Theatre 1964, dir. O. Krejca, stage design : Jos. Svoboda)

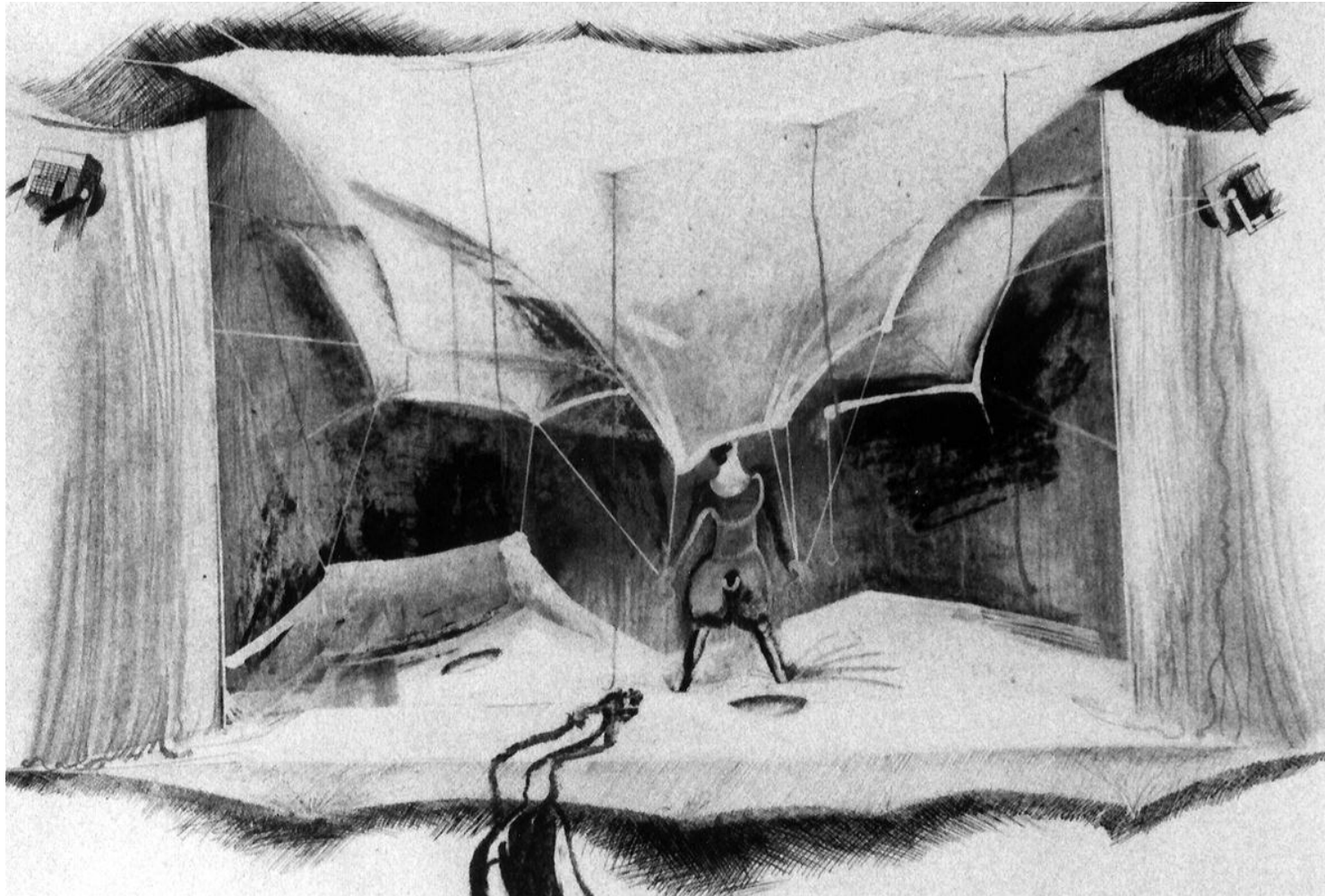




Svoboda's stage design for Mozart's IDOMENEO  
(National Arts Centre, Ottawa, 1981)







Jaroslav Malina's stage design for A Midsummer Night's Dream (Prague 1984)



Realization of Jaroslav Malina's design for V. Nezval's Manon Lescaut at Divadlo pracujících, Gottwaldov, 1983.

Jaroslav Malina, Czech scenic designer, designed the set for the OSU production of Orpheus Descending, Autumn 2000





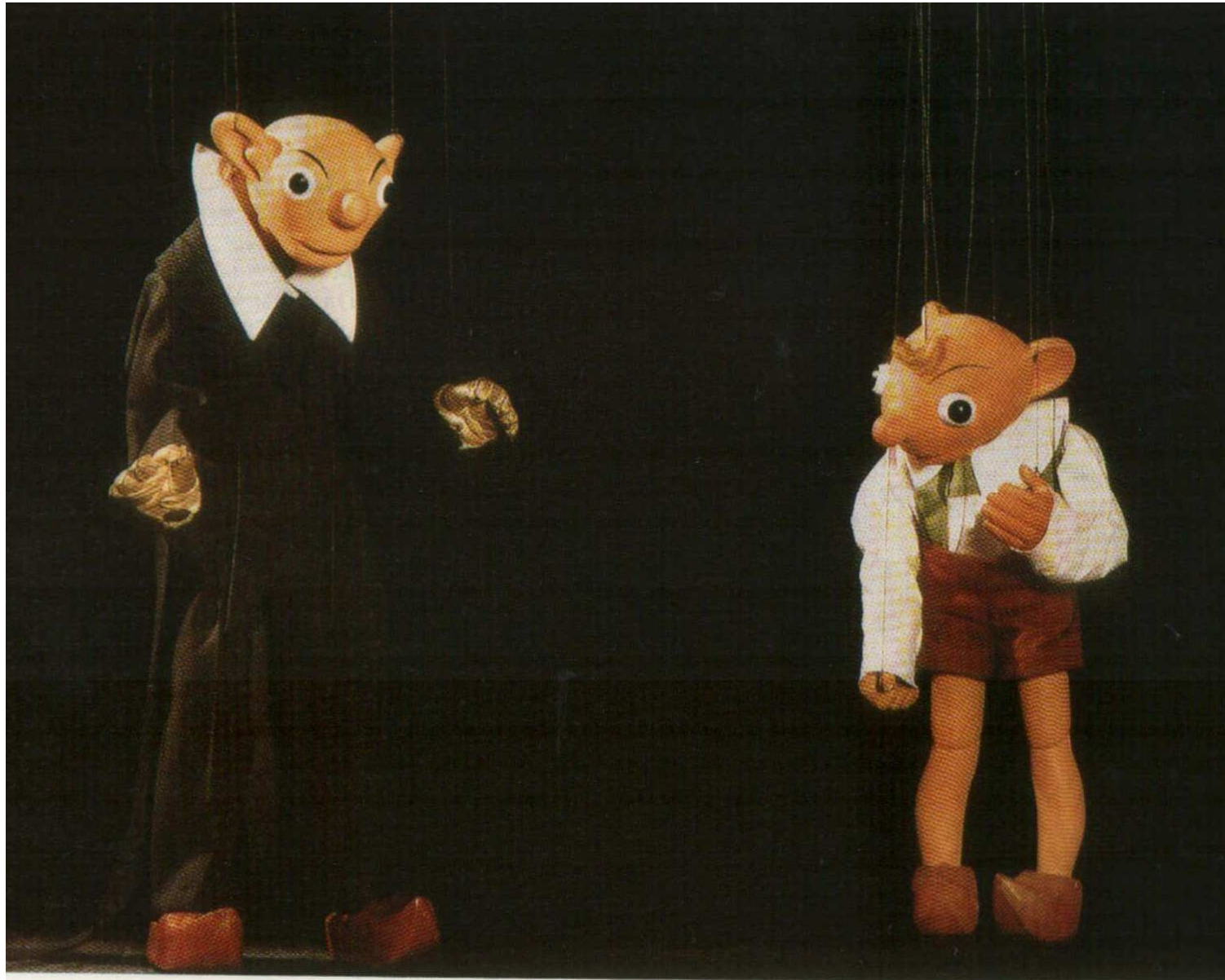
Scene from Havel's GARDEN PARTY  
(dir. Peter Scherhauser, Theatre Husa na provázku  
Brno, 1990)



Scene from  
Moravek's  
production of  
MARYŠA  
(Theatre Husa  
na provázku  
Brno, 1995)



Scene from Lebl's  
production of Anton Pavlovič  
Čechov's UNCLE VANA  
(ĎAĎA VAŇA)  
(1999, Theatre on the  
Balustrade)



Skupa's Puppets  
SPEJBL and  
HURVÍNEK