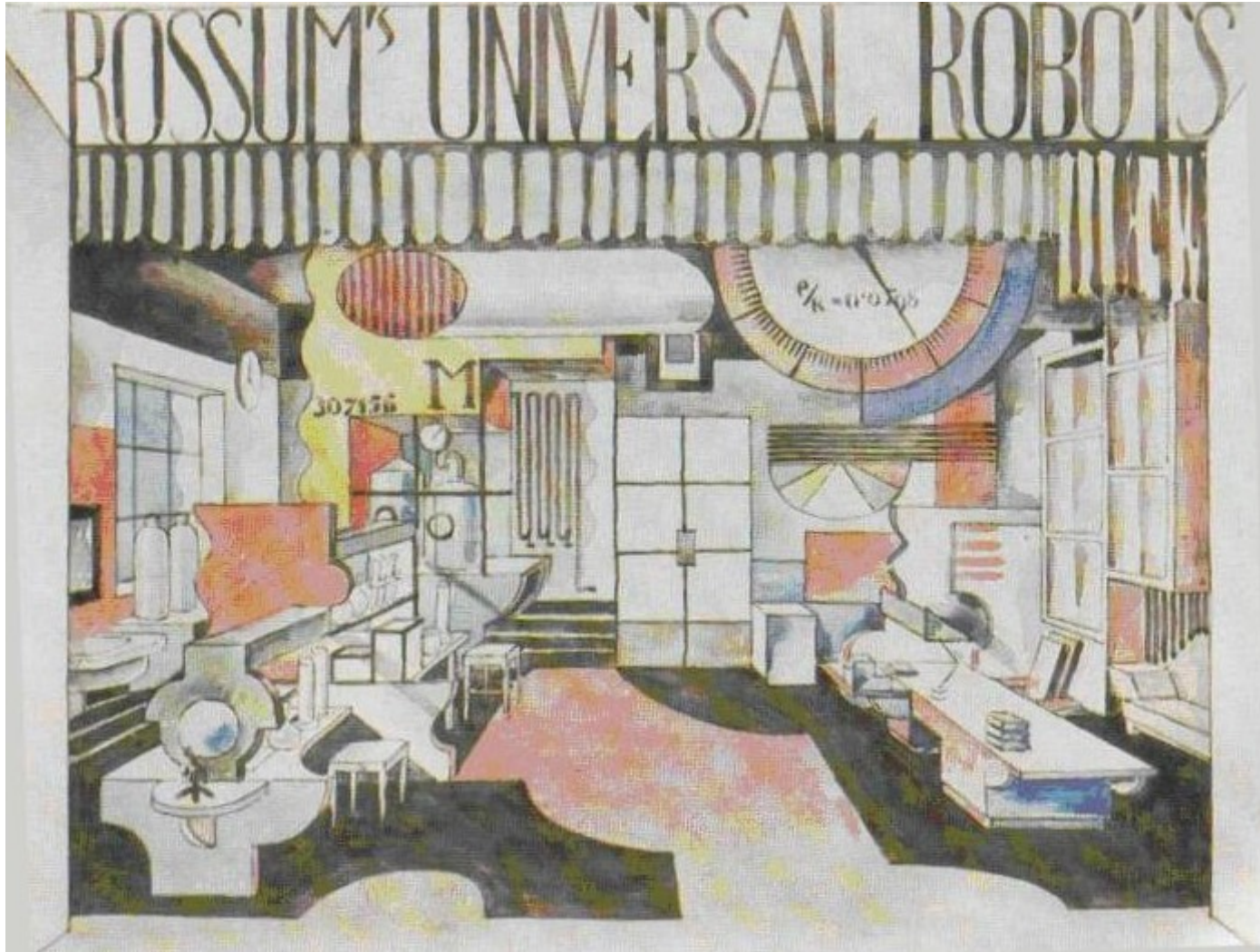
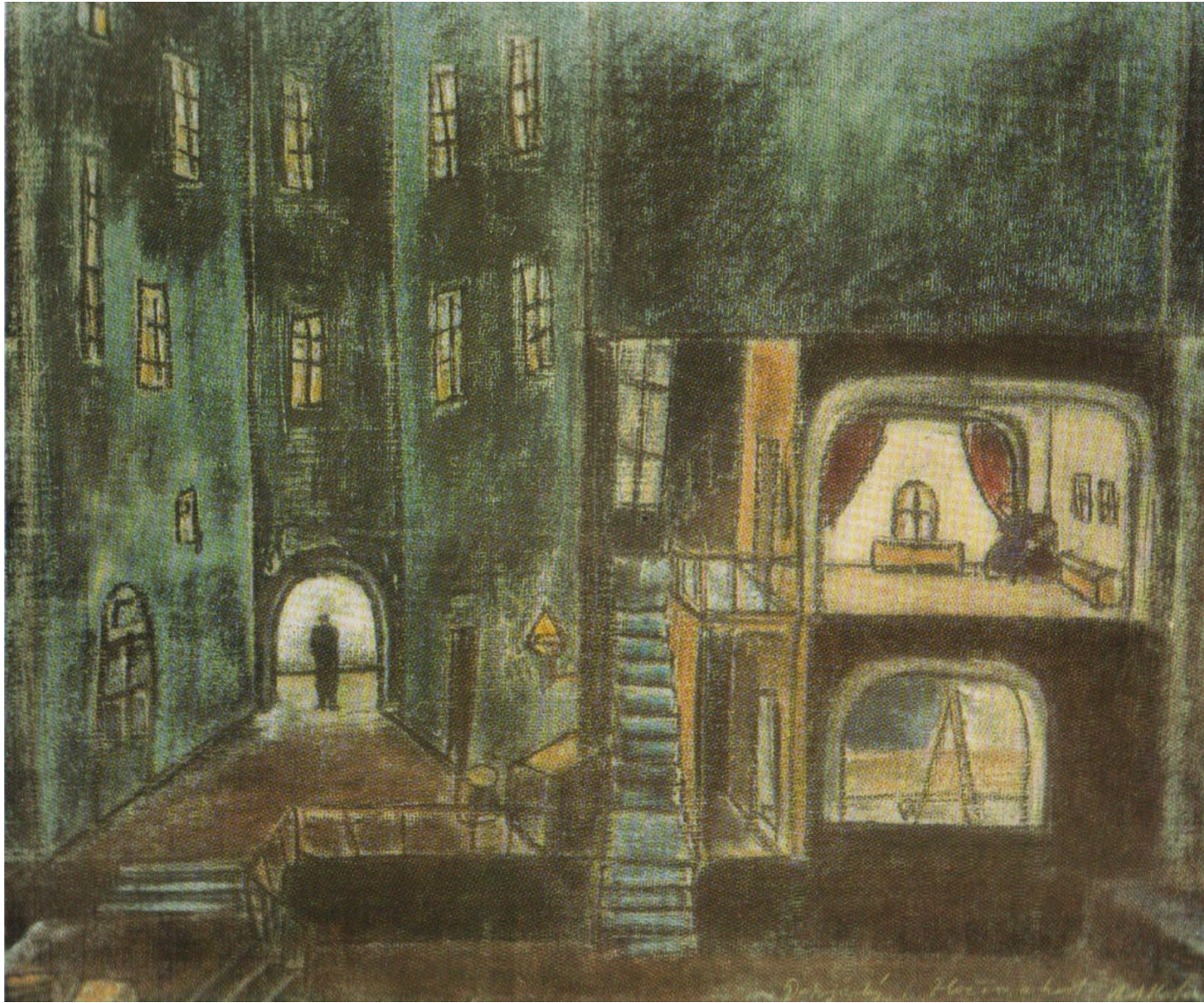


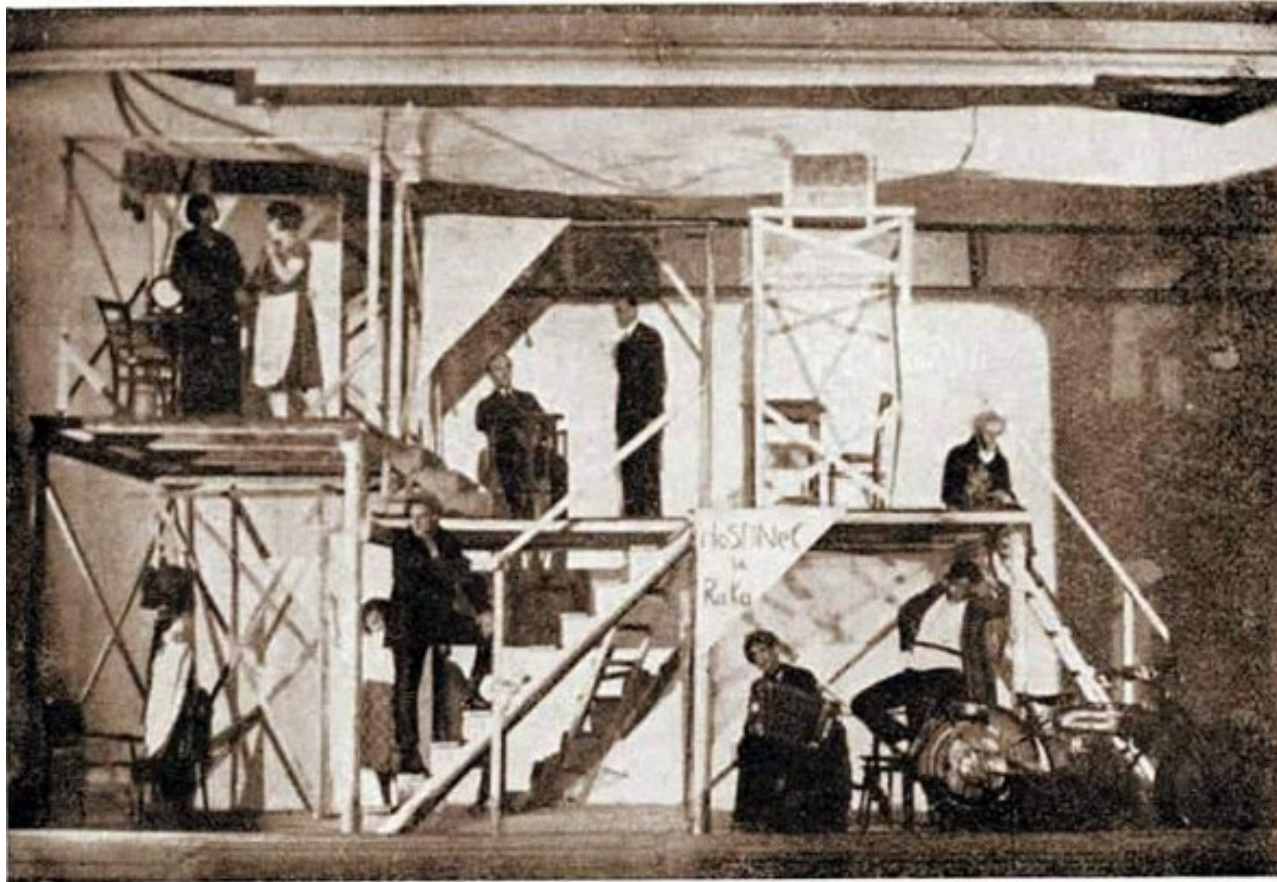
Hofman's stage design
for Verhaeren's
THE DAWN
(Municipal Theatre,
Prague, 1920;
dir. K. H. Hilar)



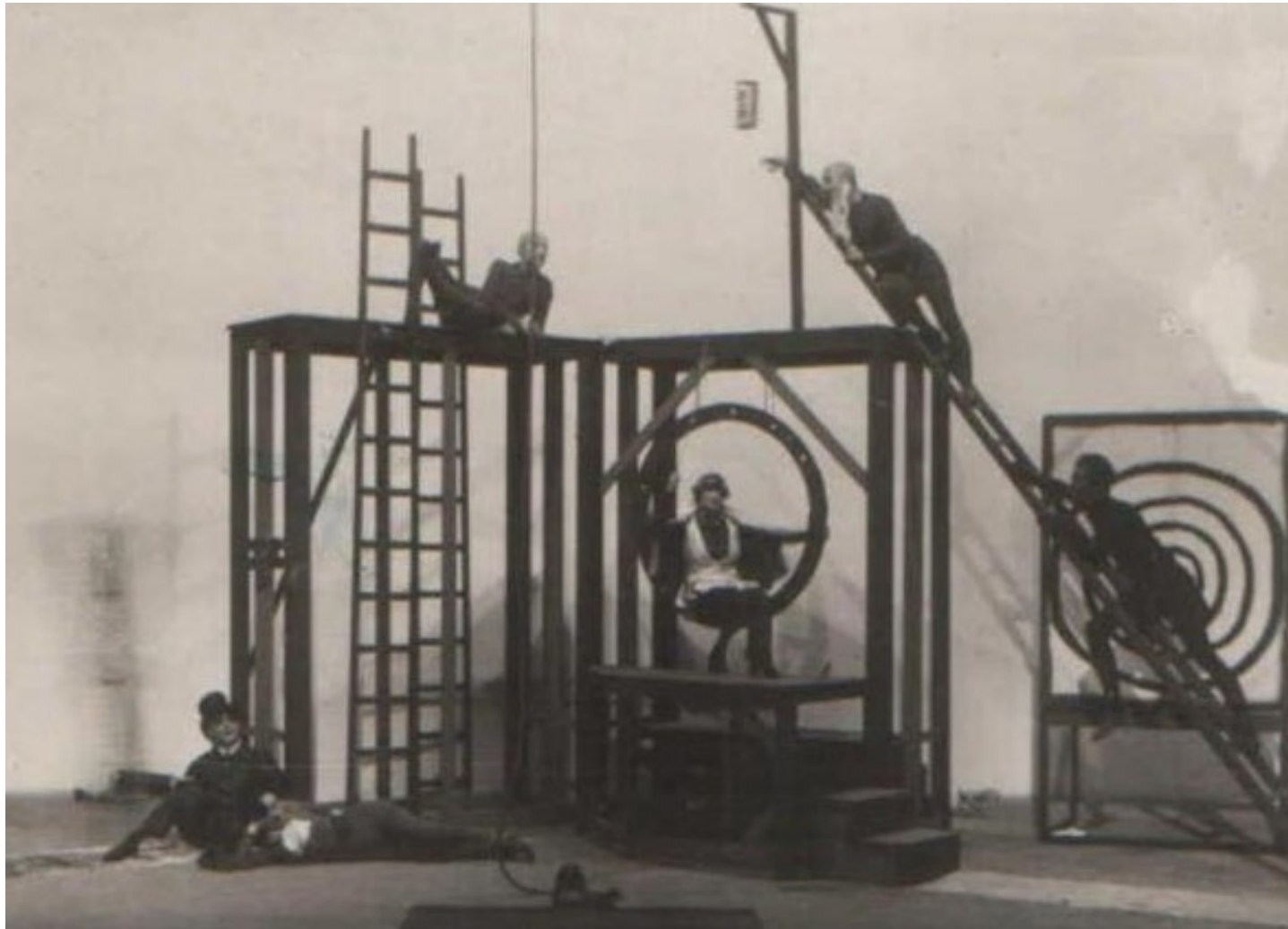
Feurstein's stage design for
Čapek's RUR
(National Theatre, Prague,
1921; dir. V. Novák)



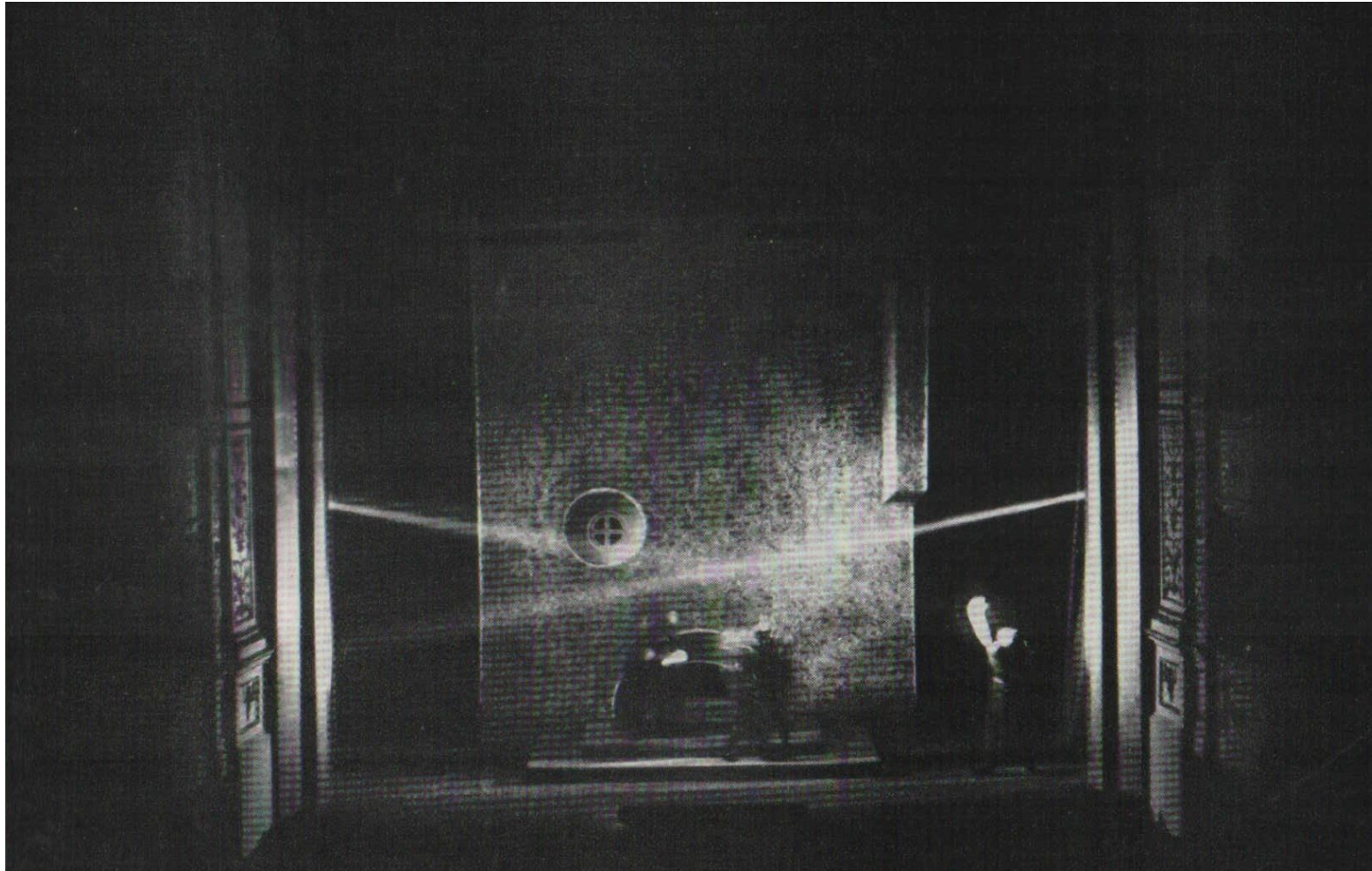
Hofman's stage design for
Dostoevsky's CRIME AND
PUNISHMENT
(Municipal Theatre, Prague, 1928;
dir. J. Bor)



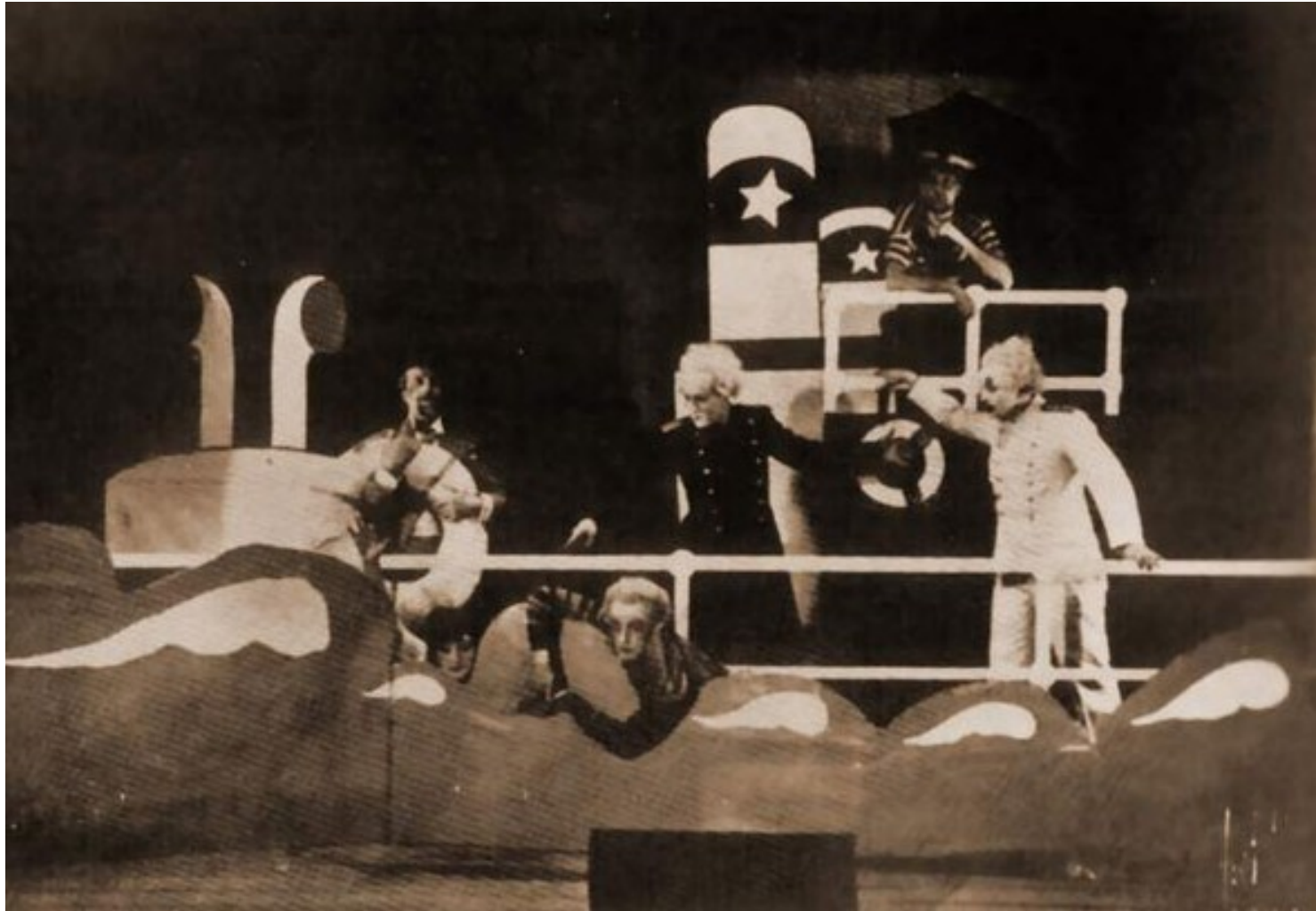
Gamza's stage design for his production of Langer's play FRINGE AREA (Czech Studio 1925)



Arch. Heythum's stage construction for Aristophanes' WOMEN CELEBRATING THESMOPHORIA (Youth Theatre Prague 1926, dir. J.Frejka)



Scene from
Shakespeare's
HAMLET
(National Theatre,
Prague, 1926; dir.
K. H. Hilar, stage
design V. Hofman)



Scene from Voskovec
and Werich's VEST
POCKET REVUE
(Liberated Theatre
Prague, 1927)



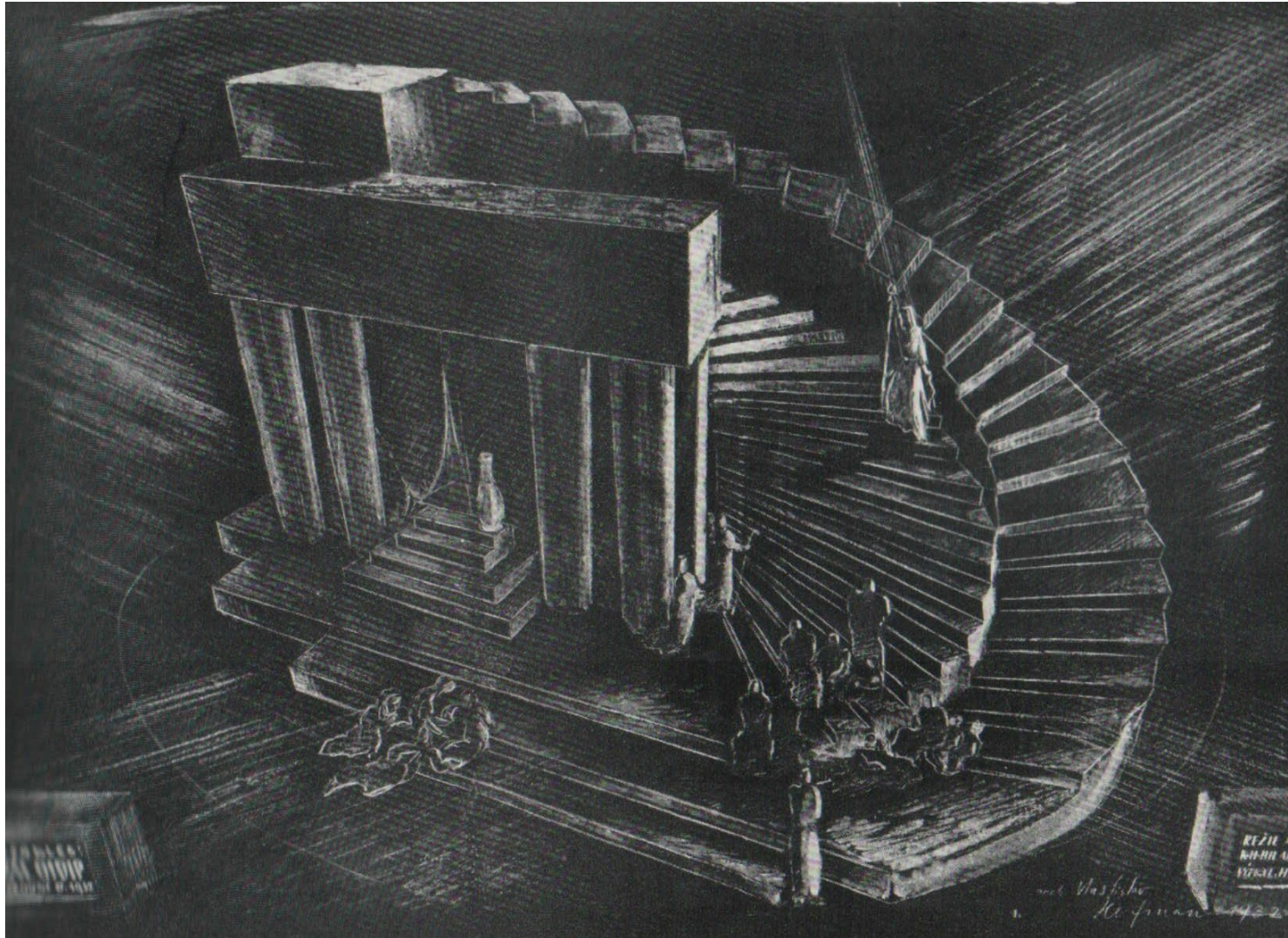
Hoffmeister's stage design
for his play BRIDE
(Liberated Theatre Prague
1927, dir. J. Honzl)



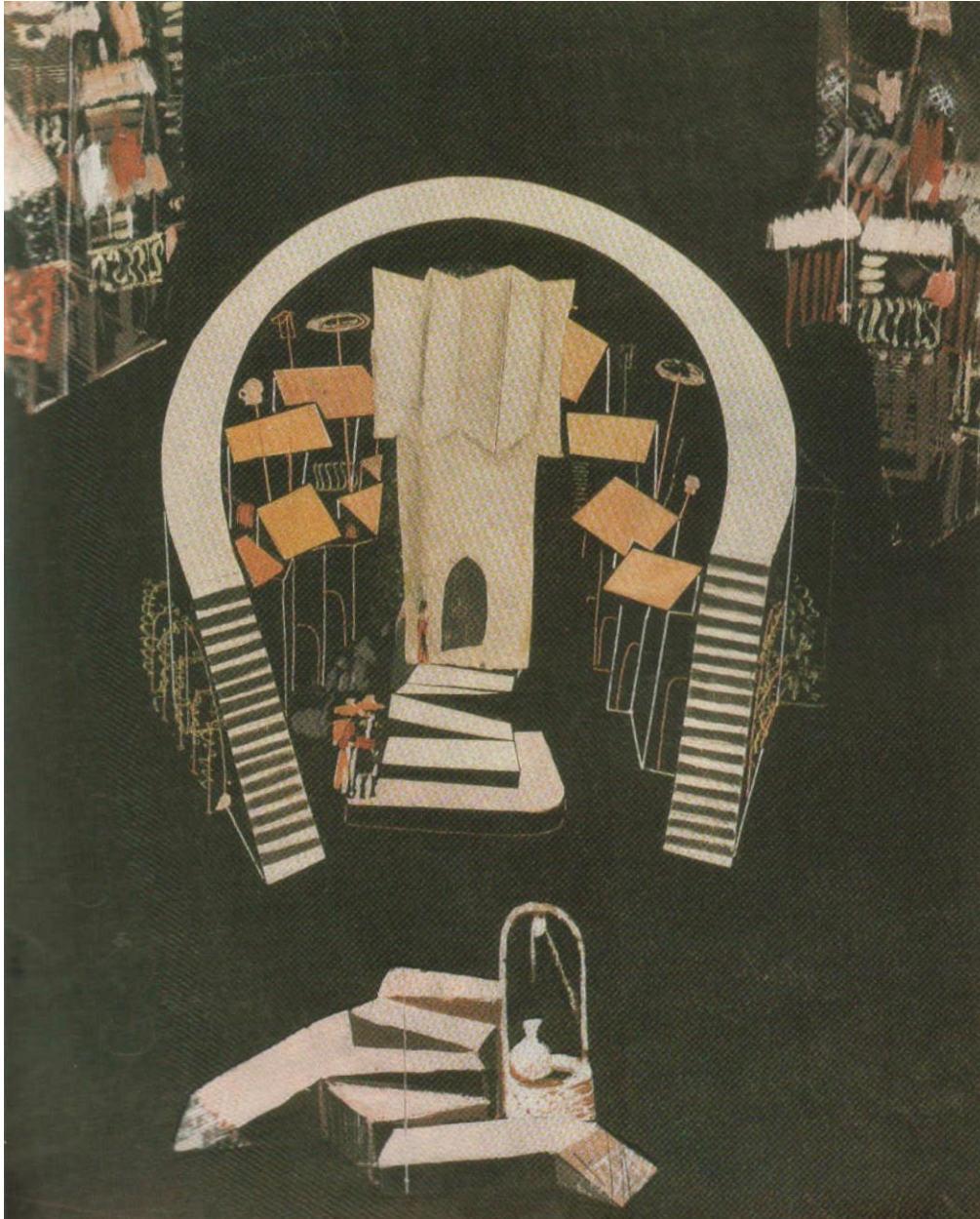
Scene from Jarry's KING
UBU (Liberated Theatre
Prague 1928, dir. J. Honzl,
stage design J. Štyrský)



Scene from the production of the Synge's play THE PLAYBOY OF THE WESTERN WORLD (Dada Theatre Prague, 1928, dir. J. Frejka, Stage design K. Šourek)



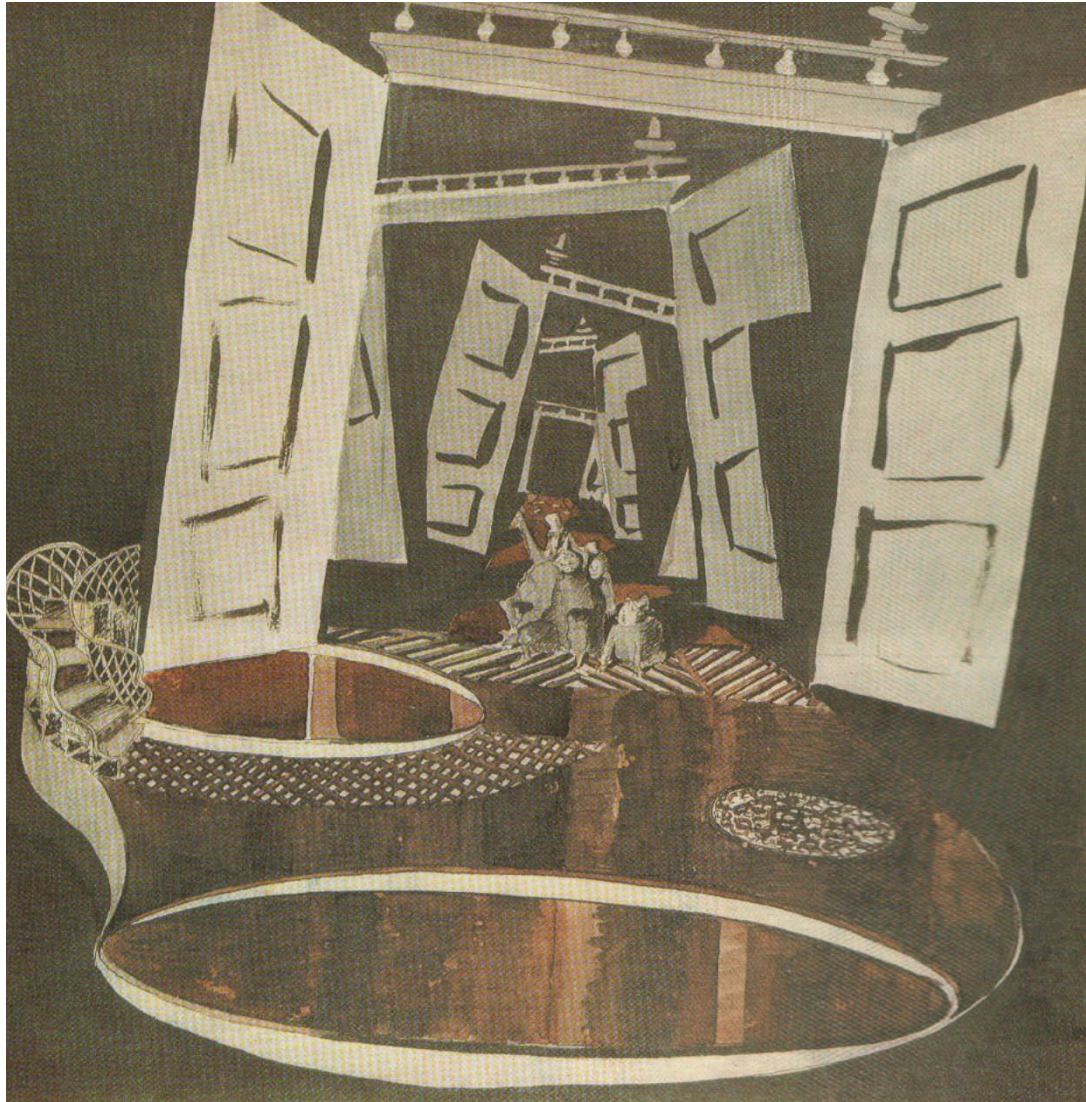
Hofman's stage design
for Sophocles'
OEDIPUS THE KING
(National Theatre,
Prague, 1932; dir. K. H.
Hilar)



Tröster's stage design for de Vega's
FUENTE OVEJUNA
(National Theatre, Prague, 1935; dir. Jiří Frejka)



Scene from Lope de Vega's
FUENTE OVEJUNA
(National Theatre, Prague,
1935; dir. J. Frejka, Stage
design F. Tröster)



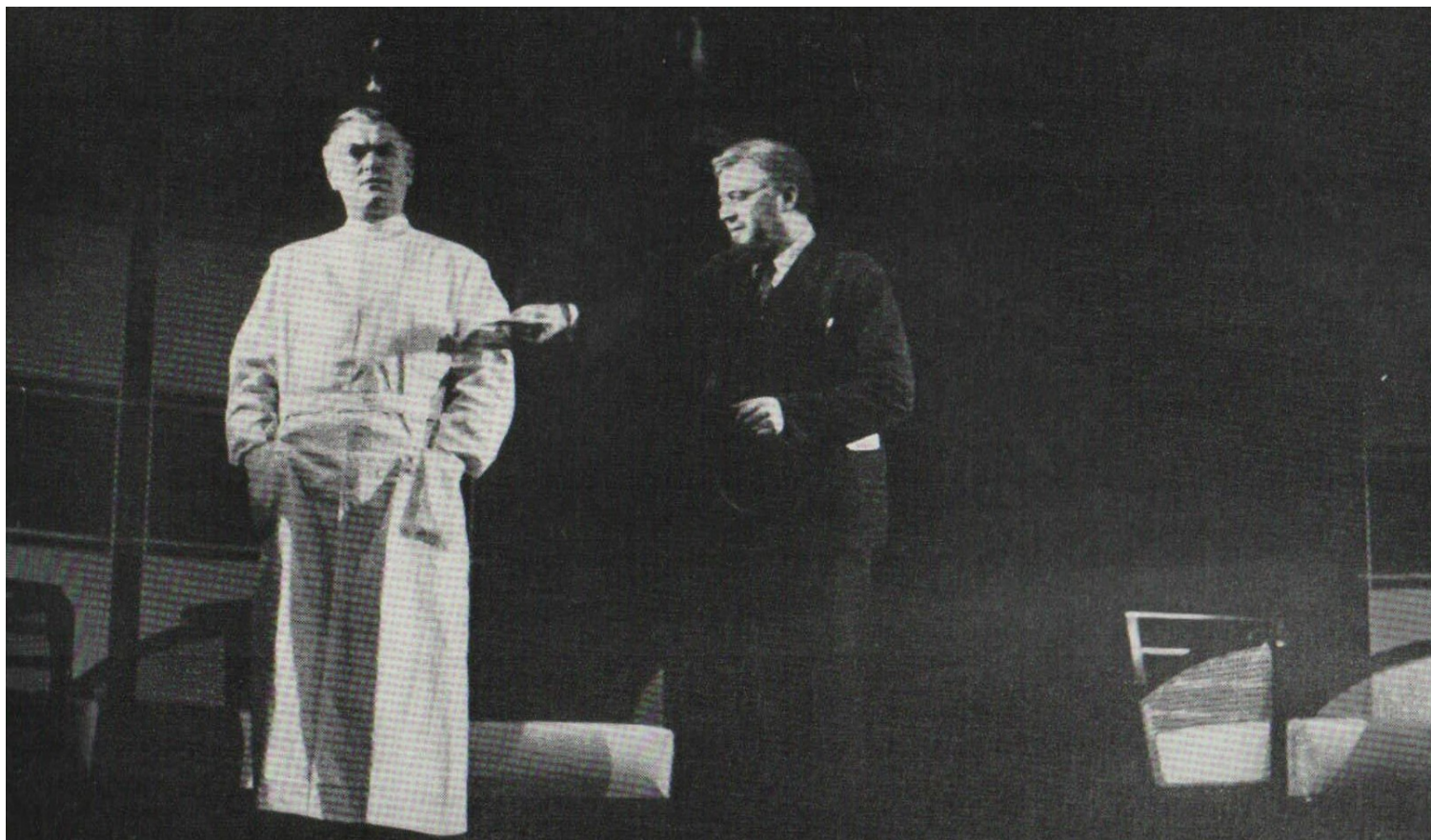
Tröster's stage design for Gogol's play
THE GOVERNMENT INSPECTOR
(National Theatre, Prague, 1936; dir. Jiří Frejka)



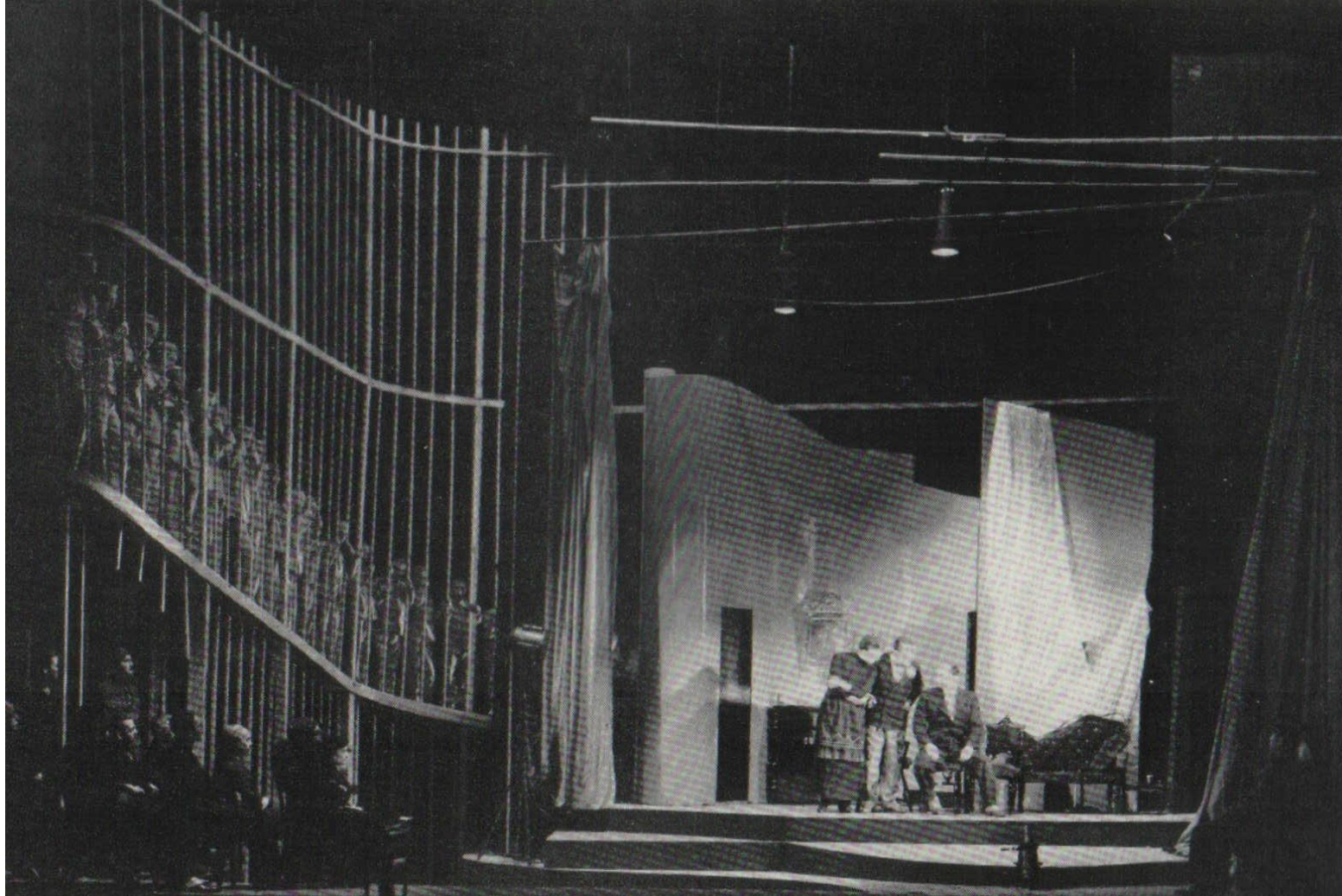
Scene from
Beuamarchaise'
BARBER OF SEVILLE
(D'37 Theatre, Prague,
1936, dir. E.F.Burian,
stage design M. Kouřil)



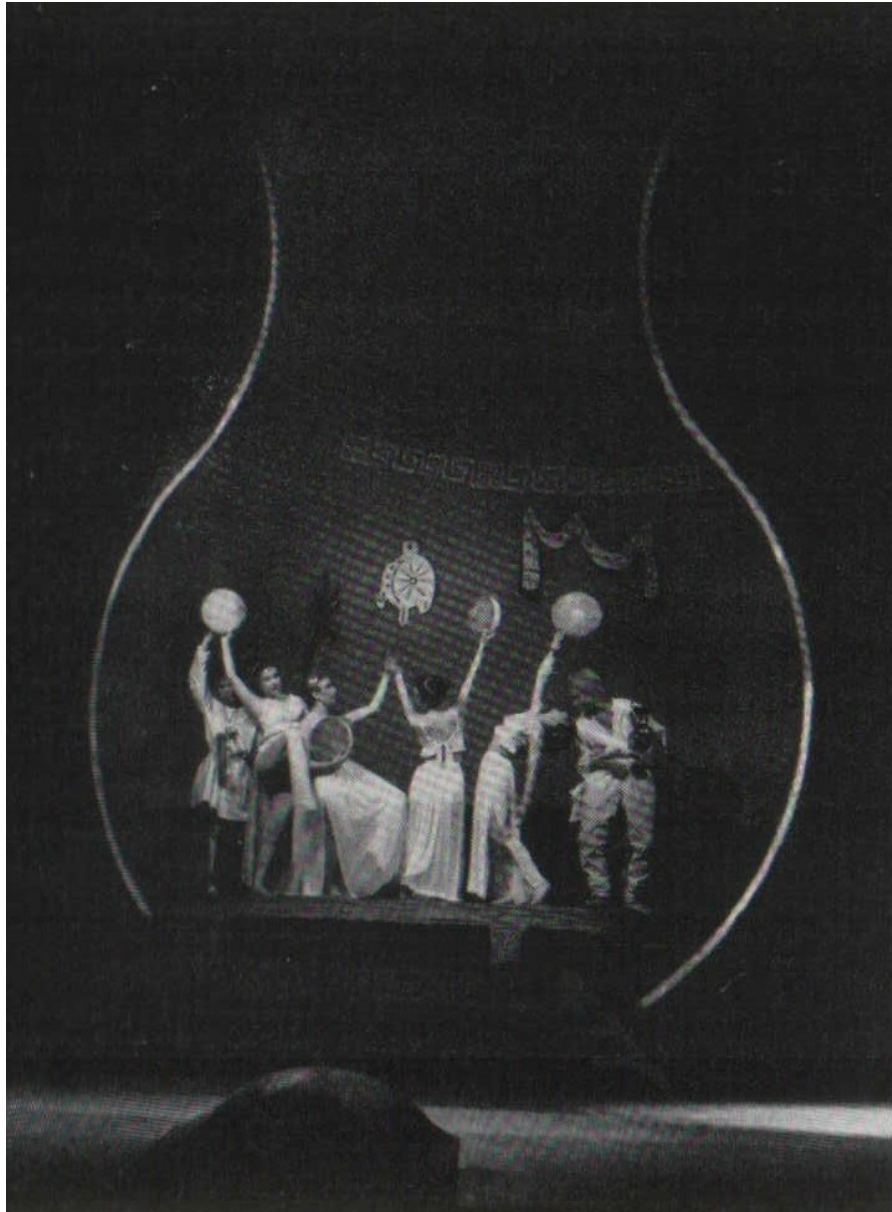
Scene from Macha's
MAY
(D'35 Theatre,
Prague, 1935; dir. E.
F. Burian, stage
design M. Kouřil, J.
Raban, J. Novotný)



Scene from Čapek's
WHITE PLAGUE
(National Theatre,
Prague, 1937; dir. K.
Dostal)
B. Karen (left) as
Sigelius and Hugo
Haas as Dr. Galén



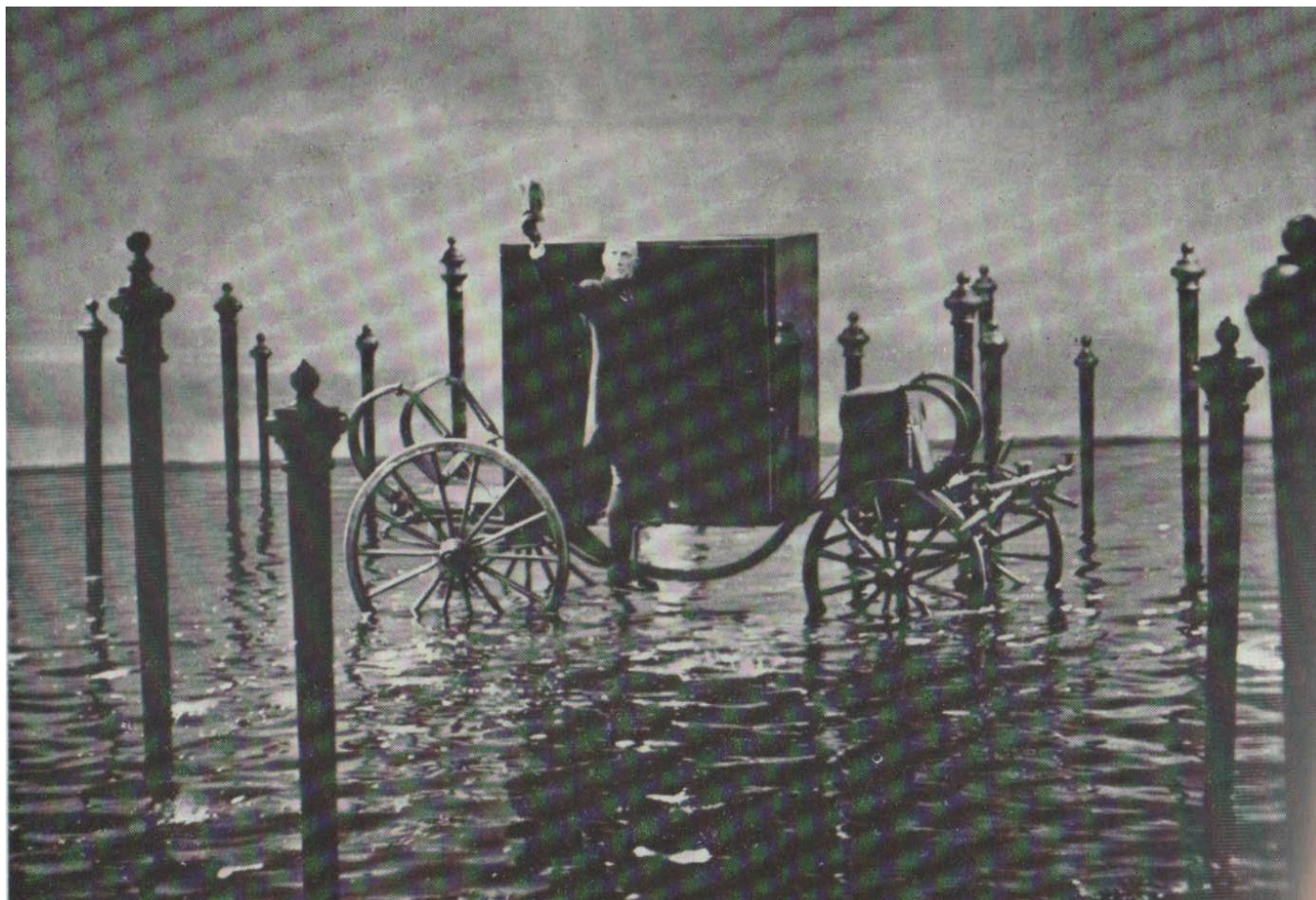
Scene from
Langer's play
SEVENTY-TWO
(Municipal Theatre,
Prague, 1937; dir.
B. Stejskal, stage
design J. Sládek)



Scene from Plautus' comedy PSEUDOLUS
(National Theatre Prague, 1942; dir. J. Frejka, stage design Jiří
Trnka)



Svoboda's stage design for
Osborne's THE COMIC
(Tylovo Theatre, Prague, 1957, dir.
A. Radok)



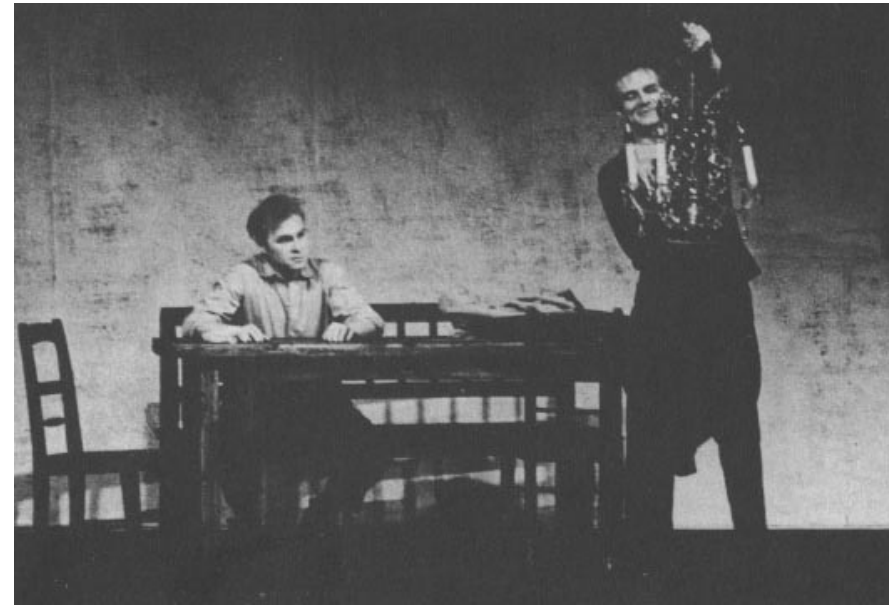
Scene from Offenbach's
HOFFMANN'S TALES
(Laterna Magika, Prague,
1963, dir. A. Radok, stage
design Jos. Svoboda)



Scene from Topol's play THIER
DAY (Tylovo Theatre 1959, dir.
O.Krejča, stage design Jos.
Svoboda)

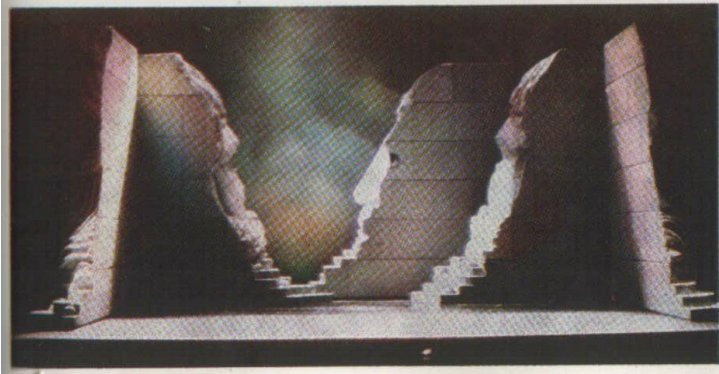


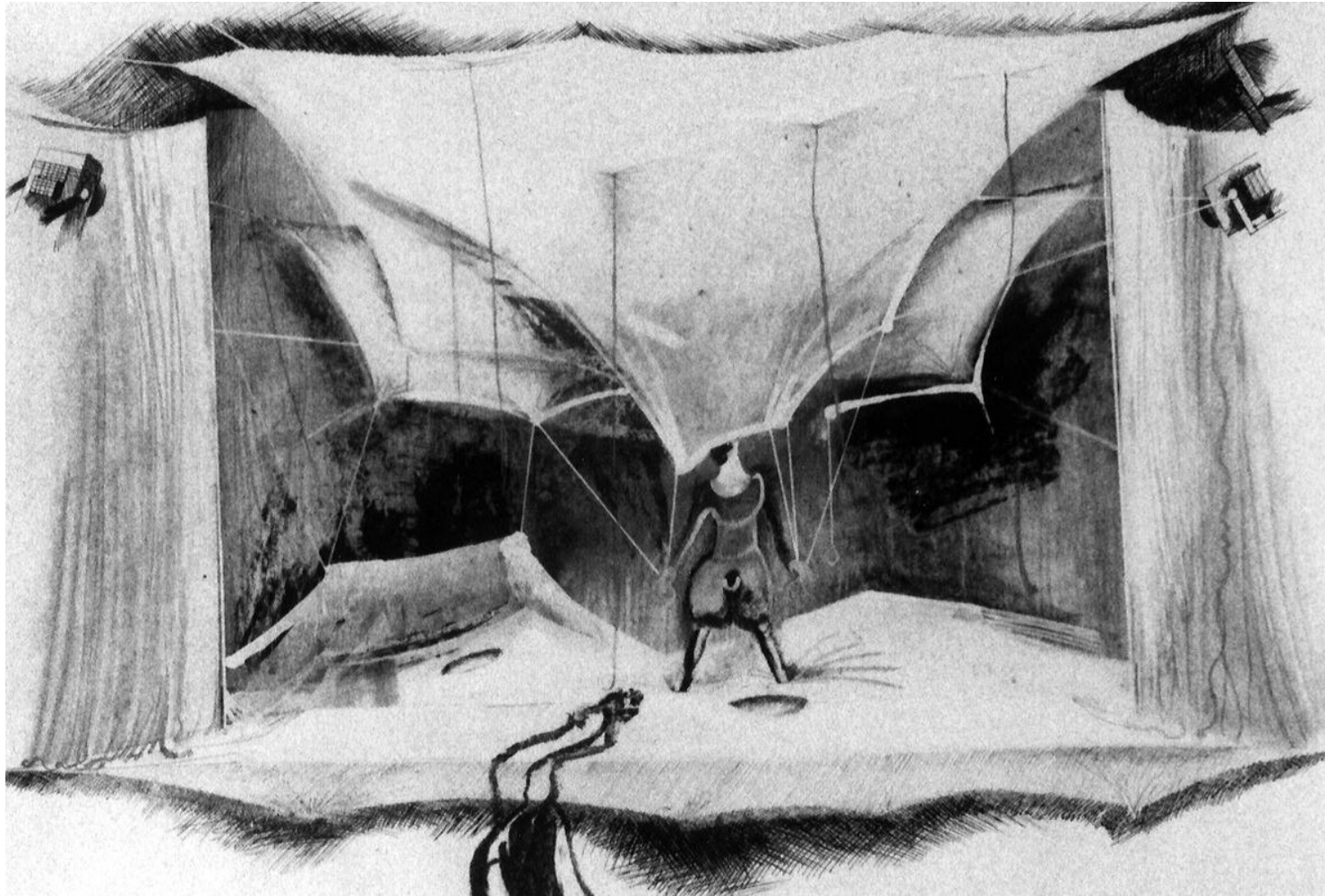
Scenes from Topol's END OF CARNEVAL (Tylovo Theatre 1964, dir. O. Krejca, stage design : Jos. Svoboda)





Svoboda's stage design for Mozart's IDOMENEO
(National Arts Centre, Ottawa, 1981)





Jaroslav Malina's stage design for A Midsummer Night's Dream (Prague 1984)



Realization of Jaroslav Malina's design for V. Nezval's Manon Lescaut at Divadlo pracujících, Gottwaldov, 1983.

Jaroslav Malina, Czech scenic designer, designed the set for the OSU production of Orpheus Descending, Autumn 2000





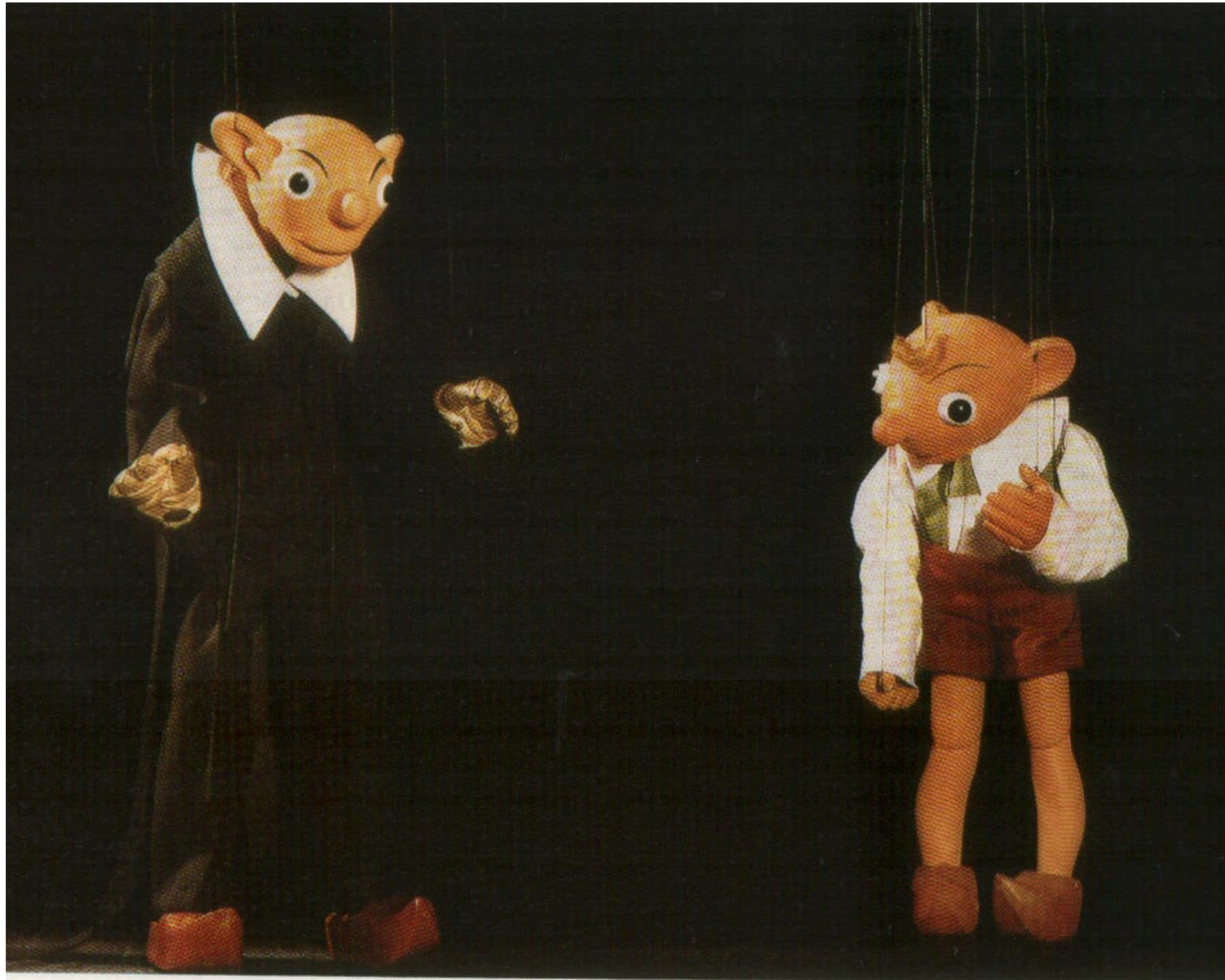
Scene from Havel's GARDEN PARTY
(dir. Peter Scherhauser, Theatre Husa na provázku
Brno, 1990)



Scene from
Moravek's
production of
MARYŠA
(Theatre Husa
na provázku
Brno, 1995)



Scene from Lebl's
production of Anton Pavlovič
Čechov's UNCLE VANA
(ĎAĎA VAŇA)
(1999, Theatre on the
Balustrade)



Skupa's Puppets
SPEJBL and
HURVÍNEK