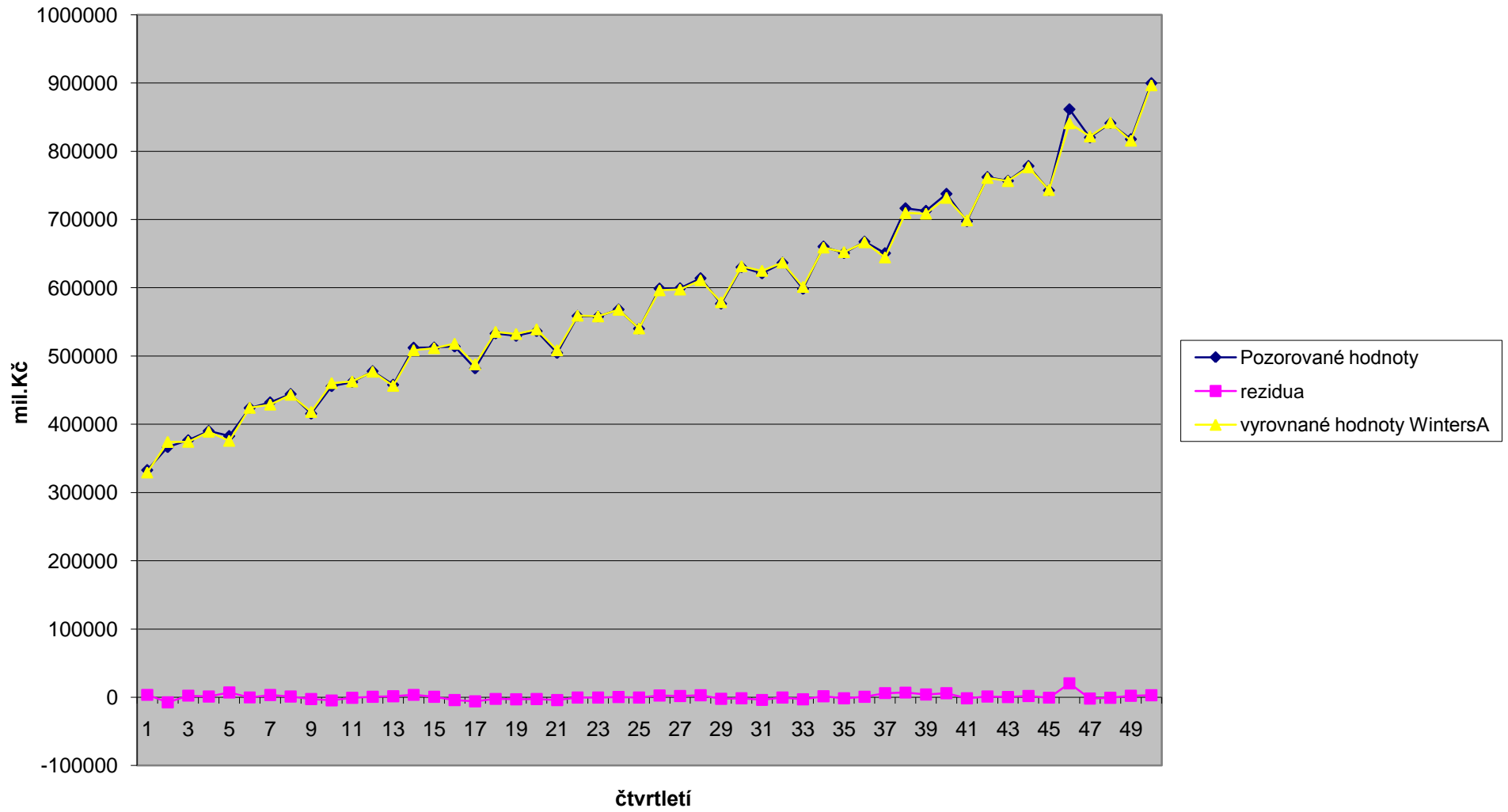
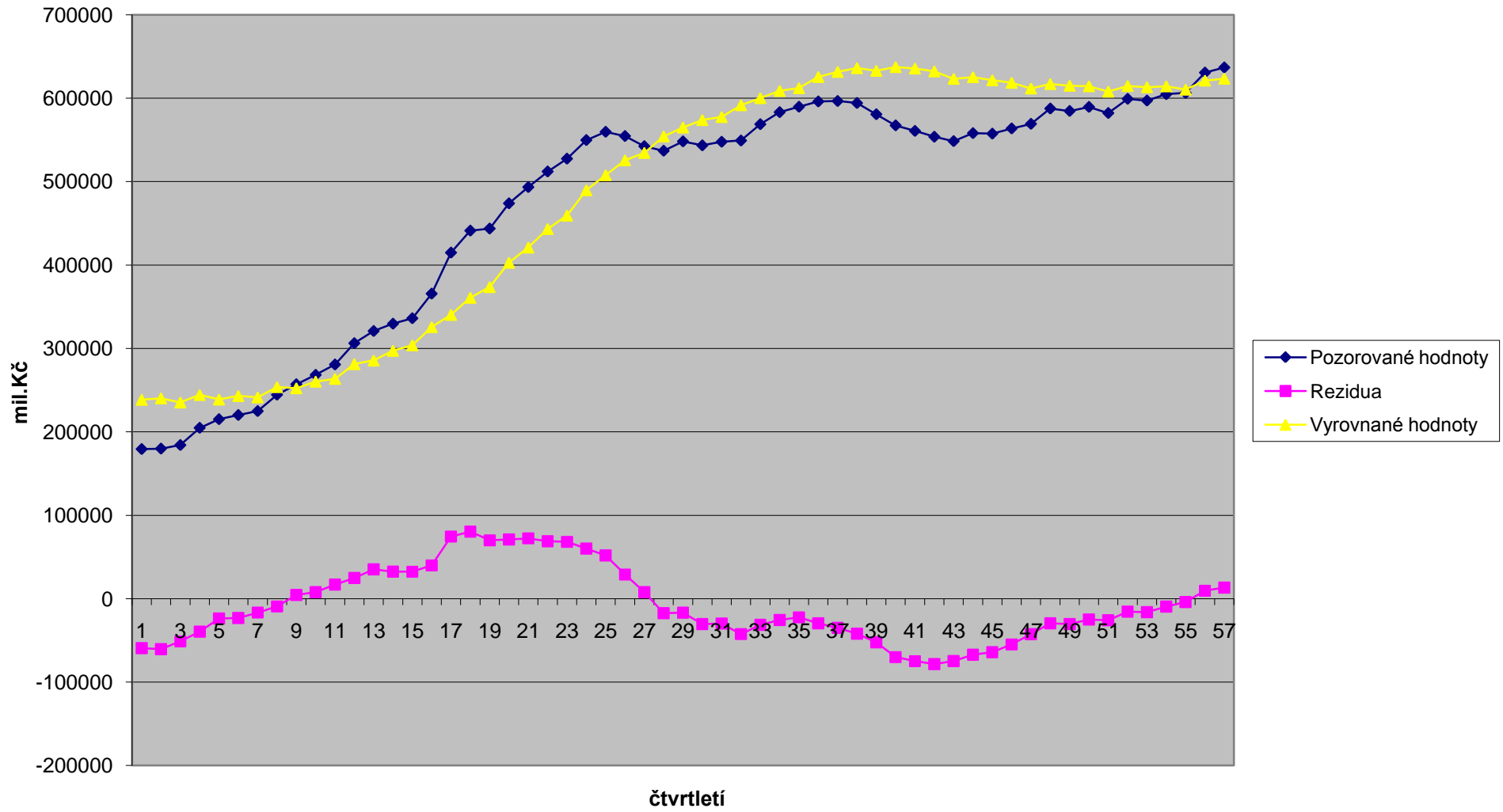


Wintersova metoda A - C943: HDP ČR



Wintersova metoda A - C913: Termínované vklady



poč.hodn.	alfa =	0.1	gama =	0.1	delta=	0.1
-----------	--------	-----	--------	-----	--------	-----

počáteční hodnoty parametrů jsou převzaty z regresního výpočtu

L0	T0	0
244622	7864.47	2179.63
		-3875.5
		2987.62

QUARTER	NOBS	DEPOSITS	rezidua	WINTERS-A	Lt	Tt	St
1993Q1	1	179342.9	-59246	238589	245172.1	7133.0	-6582.9
1993Q2	2	179879.6	-60430	240310	244844.6	6387.0	-4534.8
1993Q3	3	184157.9	-51191	235348	244911.8	5755.0	-9563.3
1993Q4	4	204782.7	-39586	244369	245779.6	5266.3	-1410.8
1994Q1	5	215145.3	-23747	238893	248114.1	4973.1	-9221.5
1994Q2	6	220120.4	-23030	243150	250244.0	4688.8	-7093.7
1994Q3	7	224857.6	-16615	241472	252881.6	4483.7	-11409.4
1994Q4	8	244498.9	-9279	253778	256219.7	4369.1	-2441.8
1995Q1	9	257013.4	4573	252440	261153.5	4425.6	-8713.4
1995Q2	10	268251.6	7911	260341	266555.7	4523.2	-6214.8
1995Q3	11	280707.7	17041	263667	273182.7	4733.6	-9516.0
1995Q4	12	306236.9	24918	281319	280992.6	5041.2	326.8
1996Q1	13	320848.6	35258	285591	290386.6	5476.5	-4795.8
1996Q2	14	329595.1	32357	297238	299857.8	5876.0	-2619.5
1996Q3	15	336112.3	32315	303798	309723.3	6274.9	-5925.5
1996Q4	16	365625.2	39933	325692	320928.2	6767.9	4763.8
1997Q1	17	414840.1	74471	340369	336890.1	7687.3	3478.7
1997Q2	18	441183	80372	360811	354500.0	8679.6	6310.7
1997Q3	19	443649.1	69980	373669	371819.1	9543.5	1850.1
1997Q4	20	473921.5	71114	402807	390142.1	10421.5	12665.4
1998Q1	21	493387.1	72369	421018	409498.1	11314.9	11519.8
1998Q2	22	512073.8	68810	443264	429308.0	12164.4	13956.2
1998Q3	23	527451.8	68145	459307	449885.4	13005.7	9421.7
1998Q4	24	549745.5	60093	489652	470310.0	13747.6	19342.4
1999Q1	25	559644.4	51894	507750	490464.3	14388.3	17285.8
1999Q2	26	554565.3	28963	525603	508428.3	14745.9	17174.3
1999Q3	27	542409.4	7949	534460	524155.5	14844.0	10304.9
1999Q4	28	536933.7	-17341	554274	536858.6	14629.9	17415.6
2000Q1	29	548175	-16685	564860	549428.6	14423.9	15431.9
2000Q2	30	543395.4	-30481	573877	560089.4	14047.6	13787.5
2000Q3	31	547678.9	-29778	577457	570460.7	13680.0	6996.3
2000Q4	32	549152.9	-42447	591600	578900.3	13155.9	12699.3
2001Q1	33	568758.9	-31371	600130	588183.3	12768.6	11946.2
2001Q2	34	583195.2	-25551	608746	597797.5	12453.2	10948.5
2001Q3	35	589675.9	-22333	612008	607493.6	12177.5	4514.9
2001Q4	36	595970.9	-29484	625455	616031.2	11813.5	9423.4
2002Q1	37	596536.5	-35036	631573	623519.2	11380.9	8053.3
2002Q2	38	594155.3	-41872	636027	629730.8	10864.0	6296.1

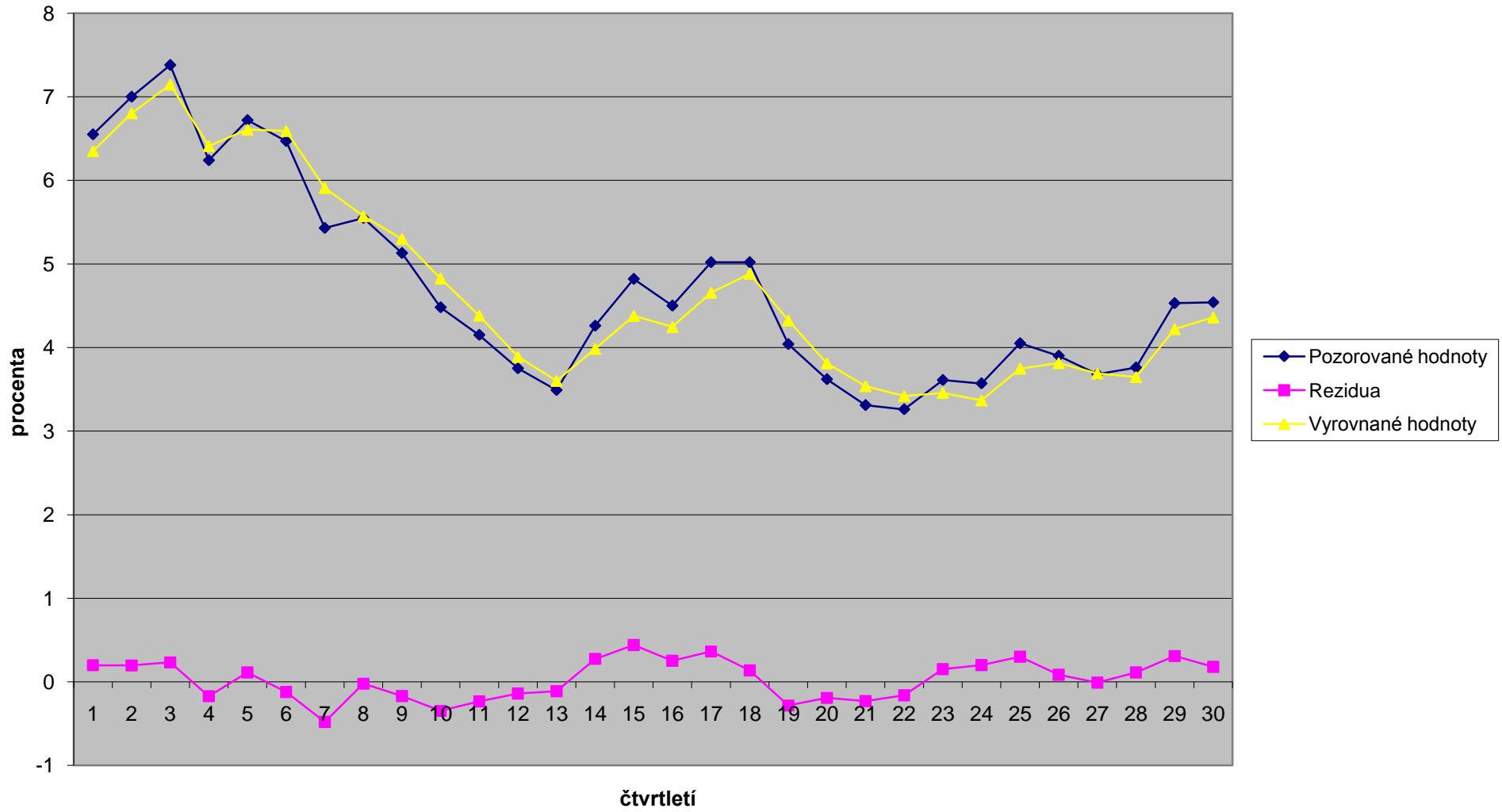
2002Q3	39	580665.6	-52200	632865	634150.4	10219.6	-1285.1
2002Q4	40	567335.8	-70031	637366	635724.3	9355.0	1642.2
2003Q1	41	560701.5	-74869	635571	635836.1	8430.7	-265.5
2003Q2	42	553728.3	-78436	632164	634583.4	7462.3	-2419.0
2003Q3	43	548450.7	-74771	623222	632814.7	6539.2	-9593.0
2003Q4	44	558026.2	-67206	625232	631057.0	5709.5	-5825.1
2004Q1	45	557442.5	-64037	621480	628860.7	4919.0	-7380.7
2004Q2	46	563668.2	-54831	618499	627010.4	4242.0	-8511.3
2004Q3	47	569176.8	-42511	611688	626004.1	3717.2	-14316.4
2004Q4	48	587564.8	-29428	616993	626088.2	3353.9	-9094.9
2005Q1	49	584631.3	-30318	614950	625699.1	2979.6	-10749.4
2005Q2	50	589489.7	-24849	614339	625610.9	2672.8	-11272.3
2005Q3	51	582149.8	-25772	607922	625102.0	2354.6	-17180.0
2005Q4	52	599177.5	-15539	614717	625538.2	2162.8	-10821.5
2006Q1	53	597108	-16073	613181	625716.7	1964.4	-12535.4
2006Q2	54	604796.4	-9406	614202	626519.8	1848.2	-12317.4
2006Q3	55	606284.6	-3972	610256	627877.7	1799.2	-17621.3
2006Q4	56	630641.9	9547	621095	630855.5	1917.1	-9760.7
2007Q1	57	636801.4	13417	623384	634429.0	2082.7	-11044.6
2007Q2	58						
2007Q3	59						
2007Q4	60						
		473009	-8216				
		<i>yprum</i>	<i>ME</i>				

S01
S02
S03
S04

abs.rezidua	rezidua ²
59246	3510123080
60430	3651808300
51191	2620472593
39586	1567058216
23747	563935328
23030	530377430
16615	276045919
9279	86100091
4573	20915091
7911	62578942
17041	290393919
24918	620883849
35258	1243112454
32357	1046963940
32315	1044227408
39933	1594658977
74471	5545962883
80372	6459709271
69980	4897194480
71114	5057205830
72369	5237309393
68810	4734757232
68145	4643701623
60093	3611183342
51894	2693015566
28963	838840497
7949	63186519
17341	300695873
16685	278405143
30481	929119148
29778	886732127
42447	1801726422
31371	984118281
25551	652845113
22333	498745016
29484	869285236
35036	1227525505
41872	1753232754

52200	2724812357	
70031	4904291774	
74869	5605394964	
78436	6152212813	
74771	5590706389	
67206	4516601627	
64037	4100792206	
54831	3006420278	
42511	1807178128	
29428	866035303	
30318	919203019	
24849	617467510	
25772	664205410	
15539	241466731	
16073	258350814	
9406	88471905	
3972	15774963	
9547	91146750	
13417	180014691	
0	0	
0	0	
0	0	
38793	2018328078	44926
MAE	MSE	RMSE

Wintersova metoda A - C932: výnosy z dluhopisů



poč.hodn.	alfa =	0.4	gama =	0.1	delta=	0.4
-----------	--------	-----	--------	-----	--------	-----

počáteční hodnoty parametrů jsou převzaty z regresního výpočtu

L0	T0	0
6.10071	-0.1046	0.31826
		0.43911
		0.19826

DATE	NOBS	REVENUE	rezidua	WINTERS-A	Lt	Tt	St
2000Q2	1	6.55	0.199	6.351	6.218	-0.082	0.133
2000Q3	2	7	0.197	6.803	6.354	-0.061	0.449
2000Q4	3	7.38	0.233	7.147	6.552	-0.035	0.595
2001Q1	4	6.24	-0.171	6.411	6.327	-0.054	0.084
2001Q2	5	6.72	0.113	6.607	6.399	-0.041	0.208
2001Q3	6	6.47	-0.121	6.591	6.223	-0.055	0.368
2001Q4	7	5.43	-0.480	5.910	5.635	-0.108	0.275
2002Q1	8	5.55	-0.022	5.572	5.503	-0.110	0.069
2002Q2	9	5.13	-0.169	5.299	5.204	-0.129	0.095
2002Q3	10	4.48	-0.347	4.827	4.690	-0.168	0.137
2002Q4	11	4.15	-0.233	4.383	4.263	-0.194	0.120
2003Q1	12	3.75	-0.140	3.890	3.914	-0.209	-0.024
2003Q2	13	3.49	-0.112	3.602	3.581	-0.222	0.021
2003Q3	14	4.26	0.275	3.985	3.665	-0.191	0.321
2003Q4	15	4.82	0.442	4.378	3.964	-0.142	0.414
2004Q1	16	4.5	0.253	4.247	4.103	-0.114	0.144
2004Q2	17	5.02	0.364	4.656	4.393	-0.074	0.263
2004Q3	18	5.02	0.137	4.883	4.472	-0.058	0.412
2004Q4	19	4.04	-0.283	4.323	4.098	-0.090	0.225
2005Q1	20	3.62	-0.192	3.812	3.795	-0.111	0.017
2005Q2	21	3.31	-0.230	3.540	3.429	-0.137	0.110
2005Q3	22	3.26	-0.160	3.420	3.115	-0.154	0.305
2005Q4	23	3.61	0.153	3.457	3.130	-0.137	0.327
2006Q1	24	3.57	0.202	3.368	3.217	-0.115	0.151
2006Q2	25	4.05	0.302	3.748	3.437	-0.081	0.311
2006Q3	26	3.9	0.086	3.814	3.451	-0.072	0.362
2006Q4	27	3.68	-0.010	3.690	3.369	-0.073	0.321
2007Q1	28	3.76	0.113	3.647	3.421	-0.060	0.226
2007Q2	29	4.53	0.309	4.221	3.704	-0.026	0.517
2007Q3	30	4.54	0.180	4.360	3.878	-0.006	0.482
2007Q4	31		-1.509	1.509	2.195	-0.174	-0.686
	32		-0.809	0.809	1.122	-0.264	-0.313
		2.837	-0.029	143.262			
		yprum	ME				

S01
S02
S03
S04

abs.rezidua	rezidua ²	
0.199	0.040	
0.197	0.039	
0.233	0.054	
0.171	0.029	
0.113	0.013	
0.121	0.015	
0.480	0.230	
0.022	0.000	
0.169	0.029	
0.347	0.120	
0.233	0.054	
0.140	0.020	
0.112	0.012	
0.275	0.076	
0.442	0.195	
0.253	0.064	
0.364	0.132	
0.137	0.019	
0.283	0.080	
0.192	0.037	
0.230	0.053	
0.160	0.026	
0.153	0.023	
0.202	0.041	
0.302	0.091	
0.086	0.007	
0.010	0.000	
0.113	0.013	
0.309	0.095	
0.180	0.032	
1.509	2.278	
0.809	0.654	
0.285	0.152	0.390
MAE	MSE	RMSE

poč.hodn.	alfa =	0.4	gama =	0.1	delta=	0.4
-----------	--------	-----	--------	-----	--------	-----

počáteční hodnoty parametrů jsou převzaty z regresního výpočtu

L0	T0	0
313427	9614.31	50394.8
		32122.3
		37107.8

DATE	NOBS	HDPCR	rezidua	WINTERS-A	Lt	Tt	St
1995Q1	1	332995	3583	329412	327022.8	10012.5	2388.9
1995Q2	2	366618	-7492	374110	328710.4	9180.0	45399.9
1995Q3	3	376688	2403	374285	340560.5	9447.0	33724.4
1995Q4	4	390221	1118	389103	351249.8	9571.2	37853.2
1996Q1	5	382859	7074	375785	368680.6	10357.2	7104.7
1996Q2	6	423953	-175	424128	378843.9	10337.8	45283.6
1996Q3	7	432152	3329	428823	392880.1	10707.6	35943.4
1996Q4	8	444324	1038	443286	404741.0	10823.0	38545.1
1997Q1	9	415593	-2547	418140	412733.7	10539.9	5406.5
1997Q2	10	455790	-4596	460386	418166.7	10029.2	42219.4
1997Q3	11	461902	-805	462707	427301.0	9939.7	35406.4
1997Q4	12	477809	728	477081	438050.0	10020.7	39030.7
1998Q1	13	457925	1601	456324	449849.8	10198.6	6474.0
1998Q2	14	512225	3585	508640	464031.3	10596.9	44609.2
1998Q3	15	512408	854	511554	475577.5	10691.8	35976.1
1998Q4	16	513925	-4095	518020	481719.3	10236.8	36300.7
1999Q1	17	481895	-5953	487848	485342.1	9575.4	2505.6
1999Q2	18	532968	-2361	535329	492294.0	9313.1	43035.1
1999Q3	19	529465	-2923	532388	498359.8	8988.3	34027.7
1999Q4	20	536469	-2585	539054	504476.2	8701.1	34577.5
2000Q1	21	504479	-4033	508512	508695.8	8253.0	-183.4
2000Q2	22	558691	-465	559156	516431.6	8201.3	42724.8
2000Q3	23	557780	-317	558097	524280.7	8166.0	33816.4
2000Q4	24	568219	430	567789	532924.6	8213.8	34864.3
2001Q1	25	540124	-299	540423	540806.0	8180.6	-382.8
2001Q2	26	598842	2567	596275	551838.8	8465.8	44436.1
2001Q3	27	599262	1851	597411	562361.1	8671.5	35050.2
2001Q4	28	613986	2912	611074	574268.2	8995.0	36805.7
2002Q1	29	576665	-2238	578903	580777.1	8746.4	-1874.5
2002Q2	30	630141	-1375	631516	587996.0	8593.7	43519.7
2002Q3	31	621004	-3829	624833	592335.3	8168.2	32497.6
2002Q4	32	636622	-247	636869	600228.7	8140.7	36640.7
2003Q1	33	598385	-2920	601305	605125.5	7816.3	-3820.9
2003Q2	34	660401	1418	658983	614517.6	7973.9	44465.2
2003Q3	35	650791	-1511	652302	620812.3	7806.0	31490.0
2003Q4	36	667533	819	666714	629527.9	7897.0	37186.5
2004Q1	37	650616	6124	644492	644229.7	8577.4	262.0
2004Q2	38	716444	6902	709542	660475.8	9344.3	49066.4

2004Q3	39	712711	4104	708607	674380.5	9800.3	34226.2
2004Q4	40	737591	5841	731750	690670.3	10449.3	41080.2
2005Q1	41	697345	-1453	698798	699504.9	10287.8	-706.8
2005Q2	42	762115	1172	760943	711095.1	10418.1	49847.8
2005Q3	43	756632	321	756311	721870.2	10453.8	34440.5
2005Q4	44	778304	1764	776540	734283.9	10649.8	42256.1
2006Q1	45	742621	-578	743199	744291.3	10585.5	-1092.2
2006Q2	46	861462	20425	841037	777571.8	12855.0	63464.8
2006Q3	47	820093	-1719	821812	788517.1	12664.0	33294.6
2006Q4	48	841083	-848	841931	800239.4	12569.9	41691.1
2007Q1	49	817704	2155	815549	815204.1	12809.4	344.7
2007Q2	50	899674	2950	896724	831291.7	13137.2	65431.8
2007Q3	51			0			
2007Q4	52			0			
		174292	601	173692			
		<i>yprum</i>	<i>ME</i>				

S01
S02
S03
S04

abs.rezidua	rezidua ²
3583	12840242
7492	56135094
2403	5774925
1118	1250033
7074	50036961
175	30452
3329	11079087
1038	1077286
2547	6488282
4596	21124913
805	648752
728	530449
1601	2563841
3585	12849214
854	730077
4095	16768939
5953	35433997
2361	5574861
2923	8541162
2585	6680867
4033	16268447
465	216627
317	100498
430	185007
299	89513
2567	6589539
1851	3425289
2912	8480466
2238	5006587
1375	1889810
3829	14660615
247	61210
2920	8523810
1418	2011374
1511	2284091
819	670157
6124	37507575
6902	47635189

4104	16845356	
5841	34111868	
1453	2111689	
1172	1373828	
321	103252	
1764	3111491	
578	334225	
20425	417199224	
1719	2954061	
848	718336	
2155	4645223	
2950	8705443	
785	13090013	3618
MAE	MSE	RMSE

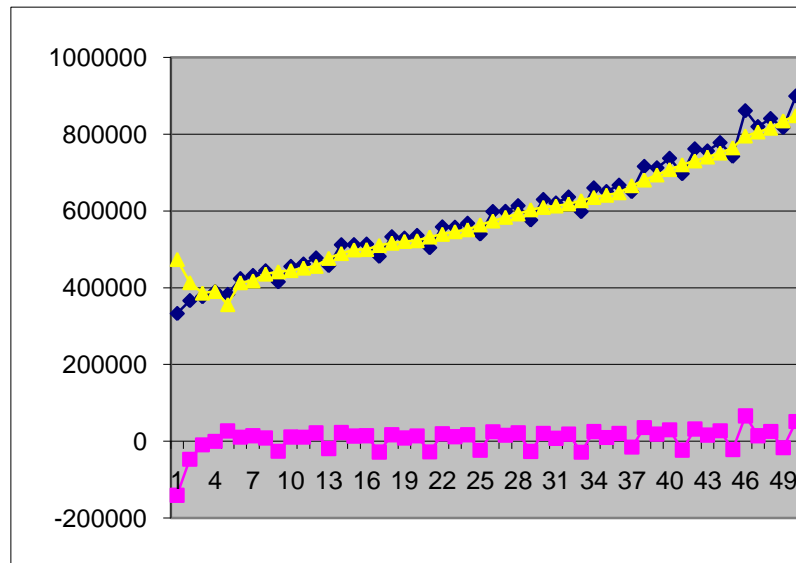
počáteční hodnoty	0.4	gama =	0.1	delta=	0.4
počáteční hodnoty parametrů jsou spočteny pomocí výpočetních postupů					
				L0	T0
				545659	1250

DATE	NOBS	HDPCR	rezidua	WINTERS-M	Lt	Tt
1995Q1	1	332995	-140827	473822	473822.4	-6058.5
1995Q2	2	366618	-46909	413527	418701.4	-10964.7
1995Q3	3	376688	-9573	386261	396982.0	-12040.2
1995Q4	4	390221	-298	390519	384616.2	-12072.8
1996Q1	5	382859	26551	356308	408099.5	-8517.2
1996Q2	6	423953	10551	413402	411452.7	-7330.1
1996Q3	7	432152	14019	418133	420132.0	-5729.2
1996Q4	8	444324	8482	435842	423685.0	-4801.0
1997Q1	9	415593	-26138	441731	441731.4	-2516.2
1997Q2	10	455790	10804	444986	444985.5	-1939.2
1997Q3	11	461902	10430	451472	451472.1	-1096.6
1997Q4	12	477809	21791	456018	456017.9	-532.4
1998Q1	13	457925	-18847	476772	476771.7	1596.2
1998Q2	14	512225	22855	489370	489370.4	2696.5
1998Q3	15	512408	13505	498903	498902.9	3380.1
1998Q4	16	513925	14192	499733	499733.2	3125.1
1999Q1	17	481895	-28365	510260	510260.0	3865.3
1999Q2	18	532968	16751	516217	516216.8	4074.4
1999Q3	19	529465	8564	520901	520901.0	4135.4
1999Q4	20	536469	13746	522723	522722.6	3904.0
2000Q1	21	504479	-27932	532411	532410.7	4482.4
2000Q2	22	558691	19315	539376	539375.8	4730.7
2000Q3	23	557780	11582	546198	546198.2	4939.9
2000Q4	24	568219	16957	551262	551261.8	4952.2
2001Q1	25	540124	-23831	563955	563955.2	5726.4
2001Q2	26	598842	24822	574020	574019.7	6160.2
2001Q3	27	599262	15619	583643	583642.6	6506.5
2001Q4	28	613986	21583	592403	592402.8	6731.8
2002Q1	29	576665	-26610	603275	603275.2	7145.9
2002Q2	30	630141	20644	609497	609497.1	7053.5
2002Q3	31	621004	7859	613145	613144.8	6712.9
2002Q4	32	636622	18171	618451	618451.2	6572.3
2003Q1	33	598385	-28568	626953	626953.4	6765.2
2003Q2	34	660401	25012	635389	635388.6	6932.2
2003Q3	35	650791	9666	641125	641125.2	6812.7
2003Q4	36	667533	19910	647623	647623.1	6781.2
2004Q1	37	650616	-15452	666068	666067.8	7947.6

2004Q2	38	716444	35660	680784	680784.0	8624.4
2004Q3	39	712711	18688	694023	694023.4	9085.9
2004Q4	40	737591	29614	707977	707976.9	9572.7
2005Q1	41	697345	-23201	720546	720546.0	9872.3
2005Q2	42	762115	31615	730500	730500.4	9880.5
2005Q3	43	756632	15930	740702	740702.4	9912.7
2005Q4	44	778304	27271	751033	751032.6	9954.4
2006Q1	45	742621	-22049	764670	764669.5	10322.7
2006Q2	46	861462	66143	795319	795319.2	12355.4
2006Q3	47	820093	14232	805861	805861.1	12174.0
2006Q4	48	841083	25455	815628	815628.2	11933.3
2007Q1	49	817704	-17081	834785	834785.1	12655.7
2007Q2	50	899674	51444	848230	848230.3	12734.6
2007Q3	51					
2007Q4	52					
		29415504	263753	29151751		

0.914	S01	553785	y ₁ prum
1.062	S02	613794	y ₂ prum
0.989	S03	585907	y ₃ prum
1.016	S04	600507	y ₄ prum

St	
0.8	0.549798
1.0	0.634528
1.0	0.635888
1.0	0.715137
0.9	0.632127
1.0	0.733761
1.0	0.729517
1.0	0.814289
0.9	0.686173
1.0	0.788863
1.0	0.779738
1.0	0.875655
0.9	0.756066
1.0	0.886538
1.0	0.864997
1.0	0.941843
0.9	0.795642
1.0	0.922439
1.0	0.893791
1.0	0.983158
0.9	0.832930
1.0	0.966960
1.0	0.941590
1.0	1.041345
0.9	0.891782
1.0	1.036451
1.0	1.011616
1.0	1.125220
1.0	0.952114
1.0	1.090622
1.0	1.048319
1.0	1.166703
1.0	0.987975
1.0	1.142995
1.0	1.098602
1.0	1.223352
1.0	1.074212



1.0	1.239992
1.0	1.203130
1.0	1.351744
1.0	1.151365
1.0	1.319038
1.0	1.277273
1.0	1.426356
1.0	1.226119
1.1	1.490983
1.0	1.384401
1.0	1.541408
1.0	1.350086
1.1	1.557119

