

| čtvrtletí | pořadí | hodnota  | $\ln(y_t)$ | $\ln(t)$ | $\ln^2(t)$ | $\ln(t) \cdot \ln(y_t)$ | skutečnost |
|-----------|--------|----------|------------|----------|------------|-------------------------|------------|
| 1993Q1    | 1      | 179342.9 | 12.0970549 | 0        | 0          | 0                       | 179342.9   |
| 1993Q2    | 2      | 179879.6 | 12.100043  | 0.693147 | 0.48045301 | 8.3871107               | 179879.6   |
| 1993Q3    | 3      | 184157.9 | 12.1235488 | 1.098612 | 1.20694896 | 13.3190797              | 184157.9   |
| 1993Q4    | 4      | 204782.7 | 12.2297047 | 1.386294 | 1.92181206 | 16.9539707              | 204782.7   |
| 1994Q1    | 5      | 215145.3 | 12.2790689 | 1.609438 | 2.59029039 | 19.762399               | 215145.3   |
| 1994Q2    | 6      | 220120.4 | 12.3019299 | 1.791759 | 3.210402   | 22.0420995              | 220120.4   |
| 1994Q3    | 7      | 224857.6 | 12.3232226 | 1.94591  | 3.78656631 | 23.9798839              | 224857.6   |
| 1994Q4    | 8      | 244498.9 | 12.4069661 | 2.079442 | 4.32407713 | 25.7995607              | 244498.9   |
| 1995Q1    | 9      | 257013.4 | 12.4568835 | 2.197225 | 4.82779584 | 27.3705706              | 257013.4   |
| 1995Q2    | 10     | 268251.6 | 12.4996806 | 2.302585 | 5.30189811 | 28.7815783              | 268251.6   |
| 1995Q3    | 11     | 280707.7 | 12.5450692 | 2.397895 | 5.74990174 | 30.0817621              | 280707.7   |
| 1995Q4    | 12     | 306236.9 | 12.6321143 | 2.484907 | 6.17476106 | 31.3896247              | 306236.9   |
| 1996Q1    | 13     | 320848.6 | 12.6787246 | 2.564949 | 6.57896521 | 32.5202866              | 320848.6   |
| 1996Q2    | 14     | 329595.1 | 12.7056202 | 2.639057 | 6.96462359 | 33.5308601              | 329595.1   |
| 1996Q3    | 15     | 336112.3 | 12.7252006 | 2.70805  | 7.33353589 | 34.4604821              | 336112.3   |
| 1996Q4    | 16     | 365625.2 | 12.809364  | 2.772589 | 7.68724822 | 35.5150983              | 365625.2   |
| 1997Q1    | 17     | 414840.1 | 12.9356484 | 2.833213 | 8.02709785 | 36.6494517              | 414840.1   |
| 1997Q2    | 18     | 441183   | 12.997215  | 2.890372 | 8.3542489  | 37.5667833              | 441183     |
| 1997Q3    | 19     | 443649.1 | 13.0027892 | 2.944439 | 8.6697209  | 38.2859194              | 443649.1   |
| 1997Q4    | 20     | 473921.5 | 13.068797  | 2.995732 | 8.97441185 | 39.1506169              | 473921.5   |
| 1998Q1    | 21     | 493387.1 | 13.1090493 | 3.044522 | 9.26911687 | 39.9107948              | 493387.1   |
| 1998Q2    | 22     | 512073.8 | 13.146224  | 3.091042 | 9.55454345 | 40.6355366              | 512073.8   |
| 1998Q3    | 23     | 527451.8 | 13.1758128 | 3.135494 | 9.83132398 | 41.3126847              | 527451.8   |
| 1998Q4    | 24     | 549745.5 | 13.2172107 | 3.178054 | 10.1000261 | 42.0050072              | 549745.5   |
| 1999Q1    | 25     | 559644.4 | 13.2350569 | 3.218876 | 10.3611616 | 42.6020046              | 559644.4   |
| 1999Q2    | 26     | 554565.3 | 13.2259398 | 3.258097 | 10.6151931 | 43.0913888              | 554565.3   |
| 1999Q3    | 27     | 542409.4 | 13.2037763 | 3.295837 | 10.8625406 | 43.5174929              | 542409.4   |
| 1999Q4    | 28     | 536933.7 | 13.1936299 | 3.332205 | 11.1035869 | 43.9638731              | 536933.7   |
| 2000Q1    | 29     | 548175   | 13.2143499 | 3.367296 | 11.3386812 | 44.4966252              | 548175     |
| 2000Q2    | 30     | 543395.4 | 13.2055925 | 3.401197 | 11.5681436 | 44.9148267              | 543395.4   |
| 2000Q3    | 31     | 547678.9 | 13.2134444 | 3.433987 | 11.7922681 | 45.3747992              | 547678.9   |
| 2000Q4    | 32     | 549152.9 | 13.2161322 | 3.465736 | 12.0113253 | 45.8036238              | 549152.9   |
| 2001Q1    | 33     | 568758.9 | 13.2512119 | 3.496508 | 12.2255651 | 46.3329626              | 568758.9   |
| 2001Q2    | 34     | 583195.2 | 13.2762772 | 3.526361 | 12.4352185 | 46.8169399              | 583195.2   |
| 2001Q3    | 35     | 589675.9 | 13.2873283 | 3.555348 | 12.6404998 | 47.2410771              | 589675.9   |
| 2001Q4    | 36     | 595970.9 | 13.2979471 | 3.583519 | 12.841608  | 47.6534453              | 595970.9   |
| 2002Q1    | 37     | 596536.5 | 13.2988957 | 3.610918 | 13.0387282 | 48.0212207              | 596536.5   |
| 2002Q2    | 38     | 594155.3 | 13.294896  | 3.637586 | 13.2320331 | 48.3613297              | 594155.3   |
| 2002Q3    | 39     | 580665.6 | 13.2719303 | 3.663562 | 13.4216839 | 48.6225349              | 580665.6   |
| 2002Q4    | 40     | 567335.8 | 13.2487066 | 3.688879 | 13.6078316 | 48.8728817              | 567335.8   |
| 2003Q1    | 41     | 560701.5 | 13.236944  | 3.713572 | 13.7906175 | 49.1563453              | 560701.5   |
| 2003Q2    | 42     | 553728.3 | 13.2244294 | 3.73767  | 13.9701742 | 49.428548               | 553728.3   |
| 2003Q3    | 43     | 548450.7 | 13.2148527 | 3.7612   | 14.1466263 | 49.7037054              | 548450.7   |
| 2003Q4    | 44     | 558026.2 | 13.2321612 | 3.78419  | 14.3200912 | 50.0730072              | 558026.2   |

|        |      |          |            |          |            |            |          |
|--------|------|----------|------------|----------|------------|------------|----------|
| 2004Q1 | 45   | 557442.5 | 13.2311146 | 3.806662 | 14.4906793 | 50.3663878 | 557442.5 |
| 2004Q2 | 46   | 563668.2 | 13.2422211 | 3.828641 | 14.6584949 | 50.6997157 | 563668.2 |
| 2004Q3 | 47   | 569176.8 | 13.2519464 | 3.850148 | 14.8236366 | 51.0219496 | 569176.8 |
| 2004Q4 | 48   | 587564.8 | 13.2837418 | 3.871201 | 14.9861973 | 51.4240347 | 587564.8 |
| 2005Q1 | 49   | 584631.3 | 13.2787367 | 3.89182  | 15.1462652 | 51.6784569 | 584631.3 |
| 2005Q2 | 50   | 589489.7 | 13.2870125 | 3.912023 | 15.303924  | 51.9790987 | 589489.7 |
| 2005Q3 | 51   | 582149.8 | 13.2744831 | 3.931826 | 15.4592528 | 52.1929528 | 582149.8 |
| 2005Q4 | 52   | 599177.5 | 13.3033132 | 3.951244 | 15.6123269 | 52.5646326 | 599177.5 |
| 2006Q1 | 53   | 597108   | 13.2998533 | 3.970292 | 15.7632179 | 52.8042999 | 597108   |
| 2006Q2 | 54   | 604796.4 | 13.3126472 | 3.988984 | 15.9119937 | 53.1039371 | 604796.4 |
| 2006Q3 | 55   | 606284.6 | 13.3151048 | 4.007333 | 16.0587193 | 53.3580613 | 606284.6 |
| 2006Q4 | 56   | 630641.9 | 13.3544935 | 4.025352 | 16.2034562 | 53.7565329 | 630641.9 |
| 2007Q1 | 57   | 636801.4 | 13.3642131 | 4.043051 | 16.3462636 | 54.0321988 | 636801.4 |
| 2007Q2 | 58   |          |            | 3364     |            | 0          |          |
| 2007Q3 | 59   |          |            | 3481     |            | 0          |          |
| 2007Q4 | 60   |          |            | 3600     |            | 0          |          |
| sumace | 1653 | 26961517 | 741.209326 | 176.3958 | 591.007775 | 2312.44205 | 26961517 |

$$X'X = \begin{bmatrix} 57 & 176.395848 \\ 176.39585 & 591.007775 \end{bmatrix}$$

THEILovoU

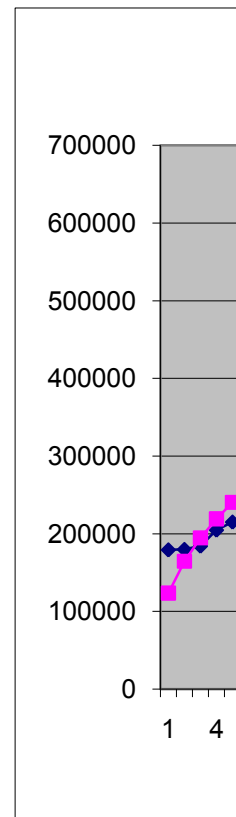
$$\det(X'X) = 2571.9478$$

$$(X'X)^{-1} = \begin{bmatrix} 0.22979 & -0.06858454 \\ -0.068585 & 0.02216219 \end{bmatrix}$$

$$X'y = \begin{bmatrix} 741.20933 \\ 2312.4421 \end{bmatrix}$$

$$\begin{bmatrix} b_1 \\ b_2 \end{bmatrix} = \begin{bmatrix} 11.724692 \\ 0.4132856 \end{bmatrix} \quad \exp(b_1) = 123586$$

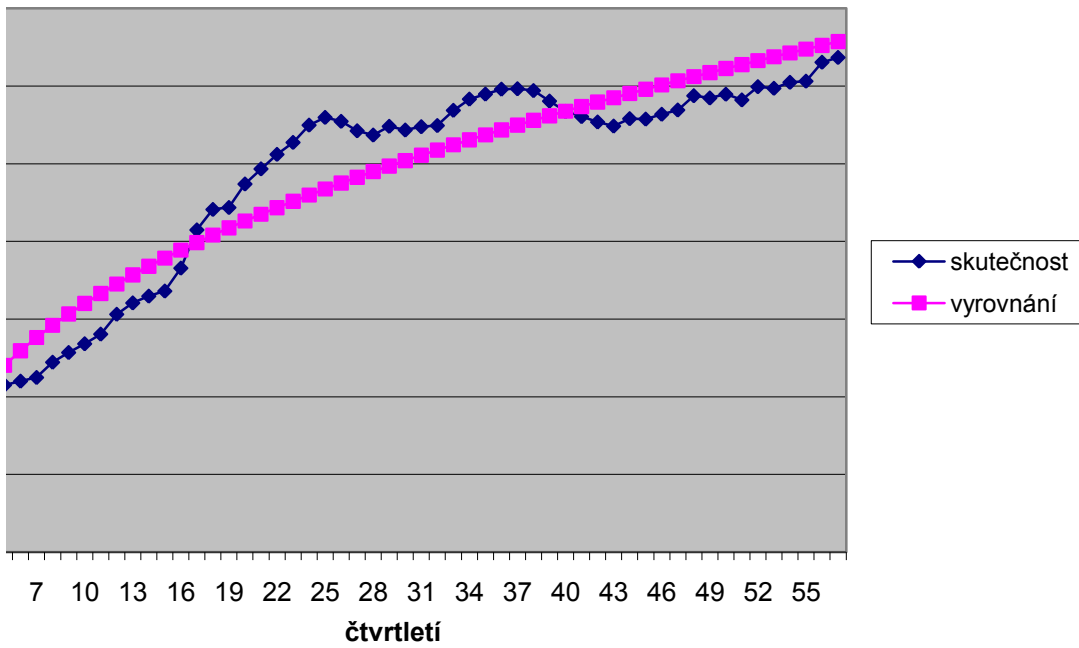
| vyrovnání | rezidua  | abs.rezidua | rezidua^2   | APE    | MAPE     |
|-----------|----------|-------------|-------------|--------|----------|
| 123586.0  | 55756.9  | 55756.9     | 3108835938  | 0.3109 | 0.18406  |
| 164581.3  | 15298.3  | 15298.3     | 234037650.5 | 0.0850 | 0.044412 |
| 194606.1  | -10448.2 | 10448.2     | 109165379.4 | 0.0567 | 0.027585 |
| 219175.4  | -14392.7 | 14392.7     | 207150941.3 | 0.0703 | 0.033948 |
| 240349.6  | -25204.3 | 25204.3     | 635256643.3 | 0.1172 | 0.055334 |
| 259159.9  | -39039.5 | 39039.5     | 1524085680  | 0.1774 | 0.081454 |
| 276207.8  | -51350.2 | 51350.2     | 2636848094  | 0.2284 | 0.102482 |
| 291879.3  | -47380.4 | 47380.4     | 2244899618  | 0.1938 | 0.088334 |
| 306438.9  | -49425.5 | 49425.5     | 2442877337  | 0.1923 | 0.087719 |
| 320077.2  | -51825.6 | 51825.6     | 2685895065  | 0.1932 | 0.08809  |
| 332936.8  | -52229.1 | 52229.1     | 2727876420  | 0.1861 | 0.085113 |
| 345127.2  | -38890.3 | 38890.3     | 1512458585  | 0.1270 | 0.059706 |
| 356735.2  | -35886.6 | 35886.6     | 1287845303  | 0.1118 | 0.052963 |
| 367830.2  | -38235.1 | 38235.1     | 1461922950  | 0.1160 | 0.054823 |
| 378469.4  | -42357.1 | 42357.1     | 1794122603  | 0.1260 | 0.059275 |
| 388700.1  | -23074.9 | 23074.9     | 532449766.3 | 0.0631 | 0.03059  |
| 398562.1  | 16278.0  | 16278.0     | 264973417.2 | 0.0392 | 0.020012 |
| 408089.3  | 33093.7  | 33093.7     | 1095191961  | 0.0750 | 0.038967 |
| 417310.8  | 26338.3  | 26338.3     | 693706094.2 | 0.0594 | 0.030592 |
| 426251.7  | 47669.8  | 47669.8     | 2272408618  | 0.1006 | 0.052956 |
| 434934.0  | 58453.1  | 58453.1     | 3416763651  | 0.1185 | 0.062966 |
| 443377.0  | 68696.8  | 68696.8     | 4719253403  | 0.1342 | 0.0719   |
| 451597.7  | 75854.1  | 75854.1     | 5753850757  | 0.1438 | 0.077477 |
| 459611.2  | 90134.3  | 90134.3     | 8124191234  | 0.1640 | 0.089299 |
| 467431.2  | 92213.2  | 92213.2     | 8503283257  | 0.1648 | 0.089782 |
| 475069.6  | 79495.7  | 79495.7     | 6319558401  | 0.1433 | 0.077208 |
| 482537.7  | 59871.7  | 59871.7     | 3584625843  | 0.1104 | 0.058414 |
| 489845.1  | 47088.6  | 47088.6     | 2217337866  | 0.0877 | 0.045861 |
| 497000.9  | 51174.1  | 51174.1     | 2618784209  | 0.0934 | 0.048962 |
| 504013.4  | 39382.0  | 39382.0     | 1550938339  | 0.0725 | 0.037599 |
| 510890.1  | 36788.8  | 36788.8     | 1353415467  | 0.0672 | 0.034753 |
| 517637.8  | 31515.1  | 31515.1     | 993200935.6 | 0.0574 | 0.029542 |
| 524262.9  | 44496.0  | 44496.0     | 1979894202  | 0.0782 | 0.040709 |
| 530771.2  | 52424.0  | 52424.0     | 2748274151  | 0.0899 | 0.047061 |
| 537168.2  | 52507.7  | 52507.7     | 2757062083  | 0.0890 | 0.046597 |
| 543458.8  | 52512.1  | 52512.1     | 2757524971  | 0.0881 | 0.046086 |
| 549647.6  | 46888.9  | 46888.9     | 2198564851  | 0.0786 | 0.040909 |
| 555739.1  | 38416.2  | 38416.2     | 1475800643  | 0.0647 | 0.033408 |
| 561737.3  | 18928.3  | 18928.3     | 358280112.7 | 0.0326 | 0.016569 |
| 567645.9  | -310.1   | 310.1       | 96162.06869 | 0.0005 | 0.000273 |
| 573468.4  | -12766.9 | 12766.9     | 162994847.1 | 0.0228 | 0.011257 |
| 579208.2  | -25479.9 | 25479.9     | 649227777.7 | 0.0460 | 0.02249  |
| 584868.4  | -36417.7 | 36417.7     | 1326250313  | 0.0664 | 0.032134 |
| 590451.9  | -32425.7 | 32425.7     | 1051424482  | 0.0581 | 0.028234 |



|            |           |            |             |        |          |
|------------|-----------|------------|-------------|--------|----------|
| 595961.4   | -38518.9  | 38518.9    | 1483703088  | 0.0691 | 0.033396 |
| 601399.5   | -37731.3  | 37731.3    | 1423649676  | 0.0669 | 0.032385 |
| 606768.7   | -37591.9  | 37591.9    | 1413148723  | 0.0660 | 0.031967 |
| 612071.2   | -24506.4  | 24506.4    | 600565771.2 | 0.0417 | 0.020428 |
| 617309.4   | -32678.1  | 32678.1    | 1067857600  | 0.0559 | 0.027188 |
| 622485.2   | -32995.5  | 32995.5    | 1088702075  | 0.0560 | 0.027225 |
| 627600.6   | -45450.8  | 45450.8    | 2065774887  | 0.0781 | 0.03757  |
| 632657.5   | -33480.0  | 33480.0    | 1120909774  | 0.0559 | 0.027179 |
| 637657.6   | -40549.6  | 40549.6    | 1644273659  | 0.0679 | 0.03284  |
| 642602.7   | -37806.3  | 37806.3    | 1429319876  | 0.0625 | 0.030308 |
| 647494.4   | -41209.8  | 41209.8    | 1698248246  | 0.0680 | 0.032868 |
| 652334.2   | -21692.3  | 21692.3    | 470554142   | 0.0344 | 0.016908 |
| 657123.5   | -20322.1  | 20322.1    | 412986416.6 | 0.0319 | 0.015706 |
| 661863.7   | -661863.7 | 661863.727 | 4.38064E+11 |        |          |
| 666556.3   | -666556.3 | 666556.273 | 4.44297E+11 |        |          |
| 671202.4   | -671202.4 | 671202.384 | 4.50513E+11 |        |          |
| 26801913.9 | 159602.8  | 2302948.6  | 1.1201E+11  | 0.0957 | 0.0480   |

0.14635

### vyrovnání mocninným trendem



| čtvrtletí | pořadí | hodnota  | =t^2 | =t^3  | =t^4    | t*yt       |
|-----------|--------|----------|------|-------|---------|------------|
| 1993Q1    | 1      | 179342.9 | 1    | 1     | 1       | 179342.9   |
| 1993Q2    | 2      | 179879.6 | 4    | 8     | 16      | 359759.2   |
| 1993Q3    | 3      | 184157.9 | 9    | 27    | 81      | 552473.7   |
| 1993Q4    | 4      | 204782.7 | 16   | 64    | 256     | 819130.8   |
| 1994Q1    | 5      | 215145.3 | 25   | 125   | 625     | 1075726.5  |
| 1994Q2    | 6      | 220120.4 | 36   | 216   | 1296    | 1320722.4  |
| 1994Q3    | 7      | 224857.6 | 49   | 343   | 2401    | 1574003.2  |
| 1994Q4    | 8      | 244498.9 | 64   | 512   | 4096    | 1955991.2  |
| 1995Q1    | 9      | 257013.4 | 81   | 729   | 6561    | 2313120.6  |
| 1995Q2    | 10     | 268251.6 | 100  | 1000  | 10000   | 2682516    |
| 1995Q3    | 11     | 280707.7 | 121  | 1331  | 14641   | 3087784.7  |
| 1995Q4    | 12     | 306236.9 | 144  | 1728  | 20736   | 3674842.8  |
| 1996Q1    | 13     | 320848.6 | 169  | 2197  | 28561   | 4171031.8  |
| 1996Q2    | 14     | 329595.1 | 196  | 2744  | 38416   | 4614331.4  |
| 1996Q3    | 15     | 336112.3 | 225  | 3375  | 50625   | 5041684.5  |
| 1996Q4    | 16     | 365625.2 | 256  | 4096  | 65536   | 5850003.2  |
| 1997Q1    | 17     | 414840.1 | 289  | 4913  | 83521   | 7052281.7  |
| 1997Q2    | 18     | 441183   | 324  | 5832  | 104976  | 7941294    |
| 1997Q3    | 19     | 443649.1 | 361  | 6859  | 130321  | 8429332.9  |
| 1997Q4    | 20     | 473921.5 | 400  | 8000  | 160000  | 9478430    |
| 1998Q1    | 21     | 493387.1 | 441  | 9261  | 194481  | 10361129.1 |
| 1998Q2    | 22     | 512073.8 | 484  | 10648 | 234256  | 11265623.6 |
| 1998Q3    | 23     | 527451.8 | 529  | 12167 | 279841  | 12131391.4 |
| 1998Q4    | 24     | 549745.5 | 576  | 13824 | 331776  | 13193892   |
| 1999Q1    | 25     | 559644.4 | 625  | 15625 | 390625  | 13991110   |
| 1999Q2    | 26     | 554565.3 | 676  | 17576 | 456976  | 14418697.8 |
| 1999Q3    | 27     | 542409.4 | 729  | 19683 | 531441  | 14645053.8 |
| 1999Q4    | 28     | 536933.7 | 784  | 21952 | 614656  | 15034143.6 |
| 2000Q1    | 29     | 548175   | 841  | 24389 | 707281  | 15897075   |
| 2000Q2    | 30     | 543395.4 | 900  | 27000 | 810000  | 16301862   |
| 2000Q3    | 31     | 547678.9 | 961  | 29791 | 923521  | 16978045.9 |
| 2000Q4    | 32     | 549152.9 | 1024 | 32768 | 1048576 | 17572892.8 |
| 2001Q1    | 33     | 568758.9 | 1089 | 35937 | 1185921 | 18769043.7 |
| 2001Q2    | 34     | 583195.2 | 1156 | 39304 | 1336336 | 19828636.8 |
| 2001Q3    | 35     | 589675.9 | 1225 | 42875 | 1500625 | 20638656.5 |
| 2001Q4    | 36     | 595970.9 | 1296 | 46656 | 1679616 | 21454952.4 |
| 2002Q1    | 37     | 596536.5 | 1369 | 50653 | 1874161 | 22071850.5 |
| 2002Q2    | 38     | 594155.3 | 1444 | 54872 | 2085136 | 22577901.4 |
| 2002Q3    | 39     | 580665.6 | 1521 | 59319 | 2313441 | 22645958.4 |
| 2002Q4    | 40     | 567335.8 | 1600 | 64000 | 2560000 | 22693432   |
| 2003Q1    | 41     | 560701.5 | 1681 | 68921 | 2825761 | 22988761.5 |
| 2003Q2    | 42     | 553728.3 | 1764 | 74088 | 3111696 | 23256588.6 |
| 2003Q3    | 43     | 548450.7 | 1849 | 79507 | 3418801 | 23583380.1 |

|        |      |            |       |         |           |            |
|--------|------|------------|-------|---------|-----------|------------|
| 2003Q4 | 44   | 558026.2   | 1936  | 85184   | 3748096   | 24553152.8 |
| 2004Q1 | 45   | 557442.5   | 2025  | 91125   | 4100625   | 25084912.5 |
| 2004Q2 | 46   | 563668.2   | 2116  | 97336   | 4477456   | 25928737.2 |
| 2004Q3 | 47   | 569176.8   | 2209  | 103823  | 4879681   | 26751309.6 |
| 2004Q4 | 48   | 587564.8   | 2304  | 110592  | 5308416   | 28203110.4 |
| 2005Q1 | 49   | 584631.3   | 2401  | 117649  | 5764801   | 28646933.7 |
| 2005Q2 | 50   | 589489.7   | 2500  | 125000  | 6250000   | 29474485   |
| 2005Q3 | 51   | 582149.8   | 2601  | 132651  | 6765201   | 29689639.8 |
| 2005Q4 | 52   | 599177.5   | 2704  | 140608  | 7311616   | 31157230   |
| 2006Q1 | 53   | 597108     | 2809  | 148877  | 7890481   | 31646724   |
| 2006Q2 | 54   | 604796.4   | 2916  | 157464  | 8503056   | 32659005.6 |
| 2006Q3 | 55   | 606284.6   | 3025  | 166375  | 9150625   | 33345653   |
| 2006Q4 | 56   | 630641.9   | 3136  | 175616  | 9834496   | 35315946.4 |
| 2007Q1 | 57   | 636801.4   | 3249  | 185193  | 10556001  | 36297679.8 |
| 2007Q2 | 58   |            | 3364  | 195112  | 11316496  |            |
| 2007Q3 | 59   |            | 3481  | 205379  | 12117361  |            |
| 2007Q4 | 60   |            | 3600  | 216000  | 12960000  |            |
| sumace | 1653 | 26961516.7 | 63365 | 2732409 | 125678141 | 903228402  |

$X^T X =$

$\text{adj}(X^T X) =$

$\det(X^T X)$

$(X^T X)^{-1}$

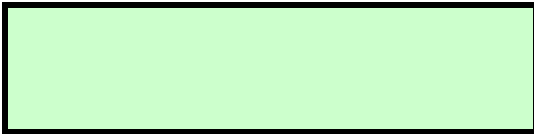
$X^T y =$

|    |          |                  |
|----|----------|------------------|
| b0 | 177842   | spočteno GRETlem |
| b1 | -2058.54 | spočteno GRETlem |
| b2 | 1692.47  | spočteno GRETlem |
| b3 | -54.3003 | spočteno GRETlem |
| b4 | 0.488188 | spočteno GRETlem |

| t <sup>2</sup> *yt | skutečnost | vyrovnání | rezidua  | abs.rezidua | rezidua <sup>2</sup> |
|--------------------|------------|-----------|----------|-------------|----------------------|
| 179342.9           | 179342.9   | 177422.1  | 1920.8   | 1920.7821   | 3689403.92           |
| 719518.4           | 179879.6   | 180068.2  | -188.6   | 188.6086    | 35573.207            |
| 1657421.1          | 184157.9   | 185472.0  | -1314.1  | 1314.1451   | 1726977.42           |
| 3276523.2          | 204782.7   | 193337.1  | 11445.6  | 11445.5831  | 131001372            |
| 5378632.5          | 215145.3   | 203378.6  | 11766.7  | 11766.6700  | 138454523            |
| 7924334.4          | 220120.4   | 215323.5  | 4796.9   | 4796.8932   | 23010183.9           |
| 11018022.4         | 224857.6   | 228910.4  | -4052.8  | 4052.7865   | 16425078.3           |
| 15647929.6         | 244498.9   | 243889.6  | 609.3    | 609.2756    | 371216.698           |
| 20818085.4         | 257013.4   | 260023.3  | -3009.9  | 3009.8928   | 9059454.47           |
| 26825160           | 268251.6   | 277085.2  | -8833.6  | 8833.5800   | 78032135.6           |
| 33965631.7         | 280707.7   | 294860.8  | -14153.1 | 14153.0912  | 200309991            |
| 44098113.6         | 306236.9   | 313147.3  | -6910.4  | 6910.4480   | 47754291.1           |
| 54223413.4         | 320848.6   | 331753.8  | -10905.2 | 10905.1884  | 118923133            |
| 64600639.6         | 329595.1   | 350500.8  | -20905.7 | 20905.6670  | 437046913            |
| 75625267.5         | 336112.3   | 369220.7  | -33108.4 | 33108.3550  | 1096163171           |
| 93600051.2         | 365625.2   | 387757.5  | -22132.3 | 22132.3400  | 489840472            |
| 119888788.9        | 414840.1   | 405967.2  | 8872.9   | 8872.8740   | 78727892.2           |
| 142943292          | 441183     | 423717.2  | 17465.8  | 17465.7661  | 305052986            |
| 160157325.1        | 443649.1   | 440886.8  | 2762.3   | 2762.2994   | 7630297.71           |
| 189568600          | 473921.5   | 457366.9  | 16554.6  | 16554.6200  | 274055443            |
| 217583711.1        | 493387.1   | 473060.1  | 20327.0  | 20326.9579  | 413185216            |
| 247843719.2        | 512073.8   | 487881.0  | 24192.8  | 24192.8263  | 585292843            |
| 279022002.2        | 527451.8   | 501755.5  | 25696.3  | 25696.3220  | 660300964            |
| 316653408          | 549745.5   | 514621.5  | 35124.0  | 35124.0253  | 1233697154           |
| 349777750          | 559644.4   | 526428.5  | 33215.9  | 33215.9000  | 1103296013           |
| 374886142.8        | 554565.3   | 537137.8  | 17427.5  | 17427.4933  | 303717523            |
| 395416452.6        | 542409.4   | 546722.4  | -4313.0  | 4312.9640   | 18601658.5           |
| 420956020.8        | 536933.7   | 555166.9  | -18233.2 | 18233.1577  | 332448041            |
| 461015175          | 548175     | 562467.7  | -14292.7 | 14292.6901  | 204280991            |
| 489055860          | 543395.4   | 568633.0  | -25237.6 | 25237.5800  | 636935444            |
| 526319422.9        | 547678.9   | 573682.6  | -26003.7 | 26003.6626  | 676190471            |
| 562332569.6        | 549152.9   | 577648.0  | -28495.1 | 28495.0899  | 811970148            |
| 619378442.1        | 568758.9   | 580572.5  | -11813.6 | 11813.6300  | 139561855            |
| 674173651.2        | 583195.2   | 582511.2  | 684.0    | 684.0320    | 467899.821           |
| 722352977.5        | 589675.9   | 583530.6  | 6145.3   | 6145.2950   | 37764650.6           |
| 772378286.4        | 595970.9   | 583709.3  | 12261.6  | 12261.6410  | 150347840            |
| 816658468.5        | 596536.5   | 583137.3  | 13399.2  | 13399.2356  | 179539516            |
| 857960253.2        | 594155.3   | 581916.5  | 12238.8  | 12238.8280  | 149788912            |
| 883192377.6        | 580665.6   | 580160.4  | 505.2    | 505.1508    | 255177.323           |
| 907737280          | 567335.8   | 577994.5  | -10658.7 | 10658.6800  | 113607459            |
| 942539221.5        | 560701.5   | 575555.6  | -14854.1 | 14854.0648  | 220643240            |
| 976776721.2        | 553728.3   | 572992.4  | -19264.1 | 19264.1204  | 371106337            |
| 1014085344         | 548450.7   | 570465.5  | -22014.8 | 22014.7805  | 484650560            |

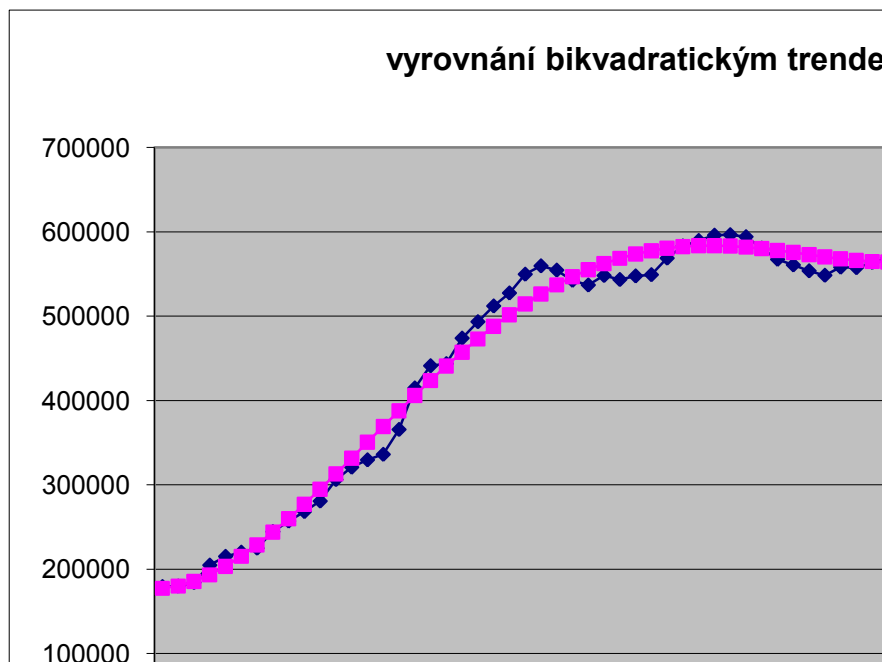


|             |            |             |           |             |            |
|-------------|------------|-------------|-----------|-------------|------------|
| 1080338723  | 558026.2   | 568146.9    | -10120.7  | 10120.6948  | 102428464  |
| 1128821063  | 557442.5   | 566220.5    | -8778.0   | 8778.0300   | 77053810.7 |
| 1192721911  | 563668.2   | 564882.0    | -1213.8   | 1213.7689   | 1473235.01 |
| 1257311551  | 569176.8   | 564338.5    | 4838.3    | 4838.2889   | 23409039.2 |
| 1353749299  | 587564.8   | 564809.2    | 22755.6   | 22755.6274  | 517818578  |
| 1403699751  | 584631.3   | 566524.7    | 18106.6   | 18106.6141  | 327849475  |
| 1473724250  | 589489.7   | 569727.5    | 19762.2   | 19762.2000  | 390544549  |
| 1514171630  | 582149.8   | 574671.8    | 7478.0    | 7478.0195   | 55920775.8 |
| 1620175960  | 599177.5   | 581623.4    | 17554.1   | 17554.0906  | 308146097  |
| 1677276372  | 597108     | 590860.0    | 6248.0    | 6248.0147   | 39037687.3 |
| 1763586302  | 604796.4   | 602670.8    | 2125.6    | 2125.5767   | 4518076.19 |
| 1834010915  | 606284.6   | 617357.0    | -11072.4  | 11072.3550  | 122597045  |
| 1977692998  | 630641.9   | 635231.1    | -4589.2   | 4589.2284   | 21061017.7 |
| 2068967749  | 636801.4   | 656617.8    | -19816.4  | 19816.4083  | 392690037  |
| 0           |            | 681853.2    |           | 0.0000      | 0          |
| 0           |            | 711285.1    |           | 0.0000      | 0          |
| 0           |            | 745273.3    |           | 0.0000      | 0          |
| 36246459825 | 26961516.7 | 26961520.81 | -4.105808 | 752565.9105 | 1.4670E+10 |

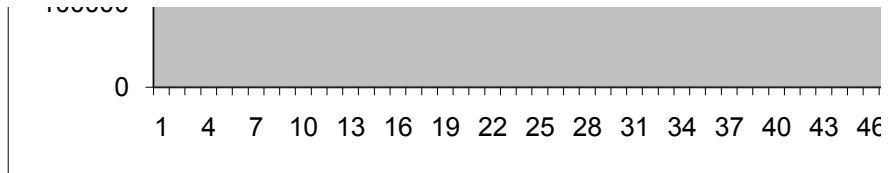


THEILovoU 0.08354

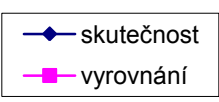
| APE    | MAPE    |
|--------|---------|
| 0.0107 | 0.01077 |
| 0.0010 | 0.00105 |
| 0.0071 | 0.00711 |
| 0.0559 | 0.05750 |
| 0.0547 | 0.05623 |
| 0.0218 | 0.02203 |
| 0.0180 | 0.01786 |
| 0.0025 | 0.00250 |
| 0.0117 | 0.01164 |
| 0.0329 | 0.03240 |
| 0.0504 | 0.04918 |
| 0.0226 | 0.02231 |
| 0.0340 | 0.03342 |
| 0.0634 | 0.06148 |
| 0.0985 | 0.09388 |
| 0.0605 | 0.05875 |
| 0.0214 | 0.02162 |
| 0.0396 | 0.04039 |
| 0.0062 | 0.00625 |
| 0.0349 | 0.03555 |
| 0.0412 | 0.04207 |
| 0.0472 | 0.04839 |
| 0.0487 | 0.04993 |
| 0.0639 | 0.06600 |
| 0.0594 | 0.06117 |
| 0.0314 | 0.03193 |
| 0.0080 | 0.00792 |
| 0.0340 | 0.03339 |
| 0.0261 | 0.02574 |
| 0.0464 | 0.04539 |
| 0.0475 | 0.04638 |
| 0.0519 | 0.05058 |
| 0.0208 | 0.02056 |
| 0.0012 | 0.00117 |
| 0.0104 | 0.01048 |
| 0.0206 | 0.02079 |
| 0.0225 | 0.02272 |
| 0.0206 | 0.02081 |
| 0.0009 | 0.00087 |
| 0.0188 | 0.01861 |
| 0.0265 | 0.02615 |
| 0.0348 | 0.03420 |
| 0.0401 | 0.03935 |

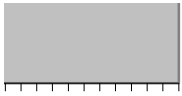


|        |         |
|--------|---------|
| 0.0181 | 0.01797 |
| 0.0157 | 0.01562 |
| 0.0022 | 0.00215 |
| 0.0085 | 0.00854 |
| 0.0387 | 0.03949 |
| 0.0310 | 0.03146 |
| 0.0335 | 0.03410 |
| 0.0128 | 0.01293 |
| 0.0293 | 0.02973 |
| 0.0105 | 0.01052 |
| 0.0035 | 0.00352 |
| 0.0183 | 0.01810 |
| 0.0073 | 0.00725 |
| 0.0311 | 0.03064 |
|        |         |
| 0.0286 | 0.0286  |



em





3 49 52 55

| čtvrtletí | pořadí | hodnota  | t <sup>2</sup> | t <sup>3</sup> | t <sup>4</sup> | t*yt       |
|-----------|--------|----------|----------------|----------------|----------------|------------|
| 1993Q1    | 1      | 179342.9 | 1              | 1              | 1              | 179342.9   |
| 1993Q2    | 2      | 179879.6 | 4              | 8              | 16             | 359759.2   |
| 1993Q3    | 3      | 184157.9 | 9              | 27             | 81             | 552473.7   |
| 1993Q4    | 4      | 204782.7 | 16             | 64             | 256            | 819130.8   |
| 1994Q1    | 5      | 215145.3 | 25             | 125            | 625            | 1075726.5  |
| 1994Q2    | 6      | 220120.4 | 36             | 216            | 1296           | 1320722.4  |
| 1994Q3    | 7      | 224857.6 | 49             | 343            | 2401           | 1574003.2  |
| 1994Q4    | 8      | 244498.9 | 64             | 512            | 4096           | 1955991.2  |
| 1995Q1    | 9      | 257013.4 | 81             | 729            | 6561           | 2313120.6  |
| 1995Q2    | 10     | 268251.6 | 100            | 1000           | 10000          | 2682516    |
| 1995Q3    | 11     | 280707.7 | 121            | 1331           | 14641          | 3087784.7  |
| 1995Q4    | 12     | 306236.9 | 144            | 1728           | 20736          | 3674842.8  |
| 1996Q1    | 13     | 320848.6 | 169            | 2197           | 28561          | 4171031.8  |
| 1996Q2    | 14     | 329595.1 | 196            | 2744           | 38416          | 4614331.4  |
| 1996Q3    | 15     | 336112.3 | 225            | 3375           | 50625          | 5041684.5  |
| 1996Q4    | 16     | 365625.2 | 256            | 4096           | 65536          | 5850003.2  |
| 1997Q1    | 17     | 414840.1 | 289            | 4913           | 83521          | 7052281.7  |
| 1997Q2    | 18     | 441183   | 324            | 5832           | 104976         | 7941294    |
| 1997Q3    | 19     | 443649.1 | 361            | 6859           | 130321         | 8429332.9  |
| 1997Q4    | 20     | 473921.5 | 400            | 8000           | 160000         | 9478430    |
| 1998Q1    | 21     | 493387.1 | 441            | 9261           | 194481         | 10361129.1 |
| 1998Q2    | 22     | 512073.8 | 484            | 10648          | 234256         | 11265623.6 |
| 1998Q3    | 23     | 527451.8 | 529            | 12167          | 279841         | 12131391.4 |
| 1998Q4    | 24     | 549745.5 | 576            | 13824          | 331776         | 13193892   |
| 1999Q1    | 25     | 559644.4 | 625            | 15625          | 390625         | 13991110   |
| 1999Q2    | 26     | 554565.3 | 676            | 17576          | 456976         | 14418697.8 |
| 1999Q3    | 27     | 542409.4 | 729            | 19683          | 531441         | 14645053.8 |
| 1999Q4    | 28     | 536933.7 | 784            | 21952          | 614656         | 15034143.6 |
| 2000Q1    | 29     | 548175   | 841            | 24389          | 707281         | 15897075   |
| 2000Q2    | 30     | 543395.4 | 900            | 27000          | 810000         | 16301862   |
| 2000Q3    | 31     | 547678.9 | 961            | 29791          | 923521         | 16978045.9 |
| 2000Q4    | 32     | 549152.9 | 1024           | 32768          | 1048576        | 17572892.8 |
| 2001Q1    | 33     | 568758.9 | 1089           | 35937          | 1185921        | 18769043.7 |
| 2001Q2    | 34     | 583195.2 | 1156           | 39304          | 1336336        | 19828636.8 |
| 2001Q3    | 35     | 589675.9 | 1225           | 42875          | 1500625        | 20638656.5 |
| 2001Q4    | 36     | 595970.9 | 1296           | 46656          | 1679616        | 21454952.4 |
| 2002Q1    | 37     | 596536.5 | 1369           | 50653          | 1874161        | 22071850.5 |
| 2002Q2    | 38     | 594155.3 | 1444           | 54872          | 2085136        | 22577901.4 |
| 2002Q3    | 39     | 580665.6 | 1521           | 59319          | 2313441        | 22645958.4 |
| 2002Q4    | 40     | 567335.8 | 1600           | 64000          | 2560000        | 22693432   |
| 2003Q1    | 41     | 560701.5 | 1681           | 68921          | 2825761        | 22988761.5 |
| 2003Q2    | 42     | 553728.3 | 1764           | 74088          | 3111696        | 23256588.6 |
| 2003Q3    | 43     | 548450.7 | 1849           | 79507          | 3418801        | 23583380.1 |

|        |      |            |       |         |           |            |
|--------|------|------------|-------|---------|-----------|------------|
| 2003Q4 | 44   | 558026.2   | 1936  | 85184   | 3748096   | 24553152.8 |
| 2004Q1 | 45   | 557442.5   | 2025  | 91125   | 4100625   | 25084912.5 |
| 2004Q2 | 46   | 563668.2   | 2116  | 97336   | 4477456   | 25928737.2 |
| 2004Q3 | 47   | 569176.8   | 2209  | 103823  | 4879681   | 26751309.6 |
| 2004Q4 | 48   | 587564.8   | 2304  | 110592  | 5308416   | 28203110.4 |
| 2005Q1 | 49   | 584631.3   | 2401  | 117649  | 5764801   | 28646933.7 |
| 2005Q2 | 50   | 589489.7   | 2500  | 125000  | 6250000   | 29474485   |
| 2005Q3 | 51   | 582149.8   | 2601  | 132651  | 6765201   | 29689639.8 |
| 2005Q4 | 52   | 599177.5   | 2704  | 140608  | 7311616   | 31157230   |
| 2006Q1 | 53   | 597108     | 2809  | 148877  | 7890481   | 31646724   |
| 2006Q2 | 54   | 604796.4   | 2916  | 157464  | 8503056   | 32659005.6 |
| 2006Q3 | 55   | 606284.6   | 3025  | 166375  | 9150625   | 33345653   |
| 2006Q4 | 56   | 630641.9   | 3136  | 175616  | 9834496   | 35315946.4 |
| 2007Q1 | 57   | 636801.4   | 3249  | 185193  | 10556001  | 36297679.8 |
| 2007Q2 | 58   |            | 3364  | 195112  | 11316496  |            |
| 2007Q3 | 59   |            | 3481  | 205379  | 12117361  |            |
| 2007Q4 | 60   |            | 3600  | 216000  | 12960000  |            |
| sumace | 1653 | 26961516.7 | 63365 | 2732409 | 125678141 | 903228402  |

$X^T X =$

$\text{adj}(X^T X) =$

$\det(X^T X)$

$(X^T X)^{-1}$

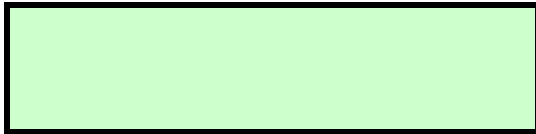
$X^T y =$

|    |          |                  |
|----|----------|------------------|
| b1 | 90494.7  | spočteno GRETlem |
| b2 | 25880.2  | spočteno GRETlem |
| b3 | -431.497 | spočteno GRETlem |
| b4 | 2.32952  | spočteno GRETlem |

| t2*yt       | skutečnost | vyrovnání | rezidua  | abs.rezidua | rezidua^2  |
|-------------|------------|-----------|----------|-------------|------------|
| 179342.9    | 179342.9   | 115945.7  | 63397.2  | 63397.16748 | 4019200844 |
| 719518.4    | 179879.6   | 140547.7  | 39331.9  | 39331.85184 | 1546994569 |
| 1657421.1   | 184157.9   | 164314.7  | 19843.2  | 19843.17596 | 393751632  |
| 3276523.2   | 204782.7   | 187260.6  | 17522.1  | 17522.06272 | 307022682  |
| 5378632.5   | 215145.3   | 209399.5  | 5745.8   | 5745.835    | 33014619.8 |
| 7924334.4   | 220120.4   | 230745.2  | -10624.8 | 10624.78432 | 112886042  |
| 11018022.4  | 224857.6   | 251311.8  | -26454.2 | 26454.17236 | 699823235  |
| 15647929.6  | 244498.9   | 271113.2  | -26614.3 | 26614.30624 | 708321297  |
| 20818085.4  | 257013.4   | 290163.5  | -33150.1 | 33150.06308 | 1098926682 |
| 26825160    | 268251.6   | 308476.5  | -40224.9 | 40224.92    | 1618044189 |
| 33965631.7  | 280707.7   | 326066.4  | -45358.7 | 45358.65412 | 2057407504 |
| 44098113.6  | 306236.9   | 342946.9  | -36710.0 | 36710.04256 | 1347627225 |
| 54223413.4  | 320848.6   | 359132.3  | -38283.7 | 38283.66244 | 1465638810 |
| 64600639.6  | 329595.1   | 374636.3  | -45041.2 | 45041.19088 | 2028708876 |
| 75625267.5  | 336112.3   | 389473.0  | -53360.7 | 53360.705   | 2847364838 |
| 93600051.2  | 365625.2   | 403656.4  | -38031.2 | 38031.18192 | 1446370798 |
| 119888788.9 | 414840.1   | 417200.4  | -2360.3  | 2360.29876  | 5571010.24 |
| 142943292   | 441183     | 430119.0  | 11064.0  | 11063.96736 | 122411374  |
| 160157325.1 | 443649.1   | 442426.3  | 1222.8   | 1222.83932  | 1495336    |
| 189568600   | 473921.5   | 454136.1  | 19785.4  | 19785.44    | 391463636  |
| 217583711.1 | 493387.1   | 465262.4  | 28124.7  | 28124.69228 | 790998316  |
| 247843719.2 | 512073.8   | 475819.3  | 36254.5  | 36254.51904 | 1314390151 |
| 279022002.2 | 527451.8   | 485820.7  | 41631.1  | 41631.14316 | 1733152081 |
| 316653408   | 549745.5   | 495280.5  | 54465.0  | 54464.98752 | 2966434866 |
| 349777750   | 559644.4   | 504212.8  | 55431.6  | 55431.575   | 3072659507 |
| 374886142.8 | 554565.3   | 512631.6  | 41933.7  | 41933.72848 | 1758437584 |
| 395416452.6 | 542409.4   | 520550.7  | 21858.7  | 21858.67084 | 477801491  |
| 420956020.8 | 536933.7   | 527984.3  | 8949.4   | 8949.42496  | 80092207.1 |
| 461015175   | 548175     | 534946.2  | 13228.8  | 13228.81372 | 175001512  |
| 489055860   | 543395.4   | 541450.4  | 1945.0   | 1944.96     | 3782869.4  |
| 526319422.9 | 547678.9   | 547511.0  | 167.9    | 167.88668   | 28185.9373 |
| 562332569.6 | 549152.9   | 553141.9  | -3989.0  | 3988.98336  | 15911988.2 |
| 619378442.1 | 568758.9   | 558357.0  | 10401.9  | 10401.87276 | 108198957  |
| 674173651.2 | 583195.2   | 563170.4  | 20024.8  | 20024.77792 | 400991731  |
| 722352977.5 | 589675.9   | 567596.0  | 22079.9  | 22079.855   | 487519997  |
| 772378286.4 | 595970.9   | 571647.9  | 24323.0  | 24323.02688 | 591609637  |
| 816658468.5 | 596536.5   | 575339.9  | 21196.6  | 21196.61644 | 449296549  |
| 857960253.2 | 594155.3   | 578686.1  | 15469.2  | 15469.24656 | 239297589  |
| 883192377.6 | 580665.6   | 581700.4  | -1034.8  | 1034.75988  | 1070728.01 |
| 907737280   | 567335.8   | 584396.8  | -17061.0 | 17060.98    | 291077039  |
| 942539221.5 | 560701.5   | 586789.3  | -26087.8 | 26087.79092 | 680572835  |
| 976776721.2 | 553728.3   | 588891.9  | -35163.6 | 35163.56976 | 1236476638 |
| 1014085344  | 548450.7   | 590718.5  | -42267.8 | 42267.79364 | 1786566379 |

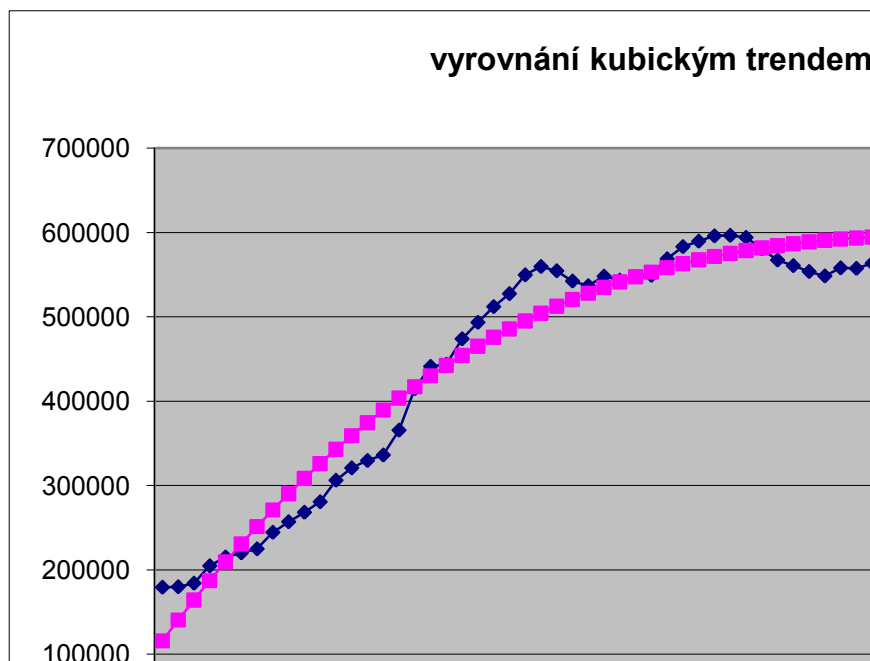


|             |            |             |           |             |            |
|-------------|------------|-------------|-----------|-------------|------------|
| 1080338723  | 558026.2   | 592283.1    | -34256.9  | 34256.93968 | 1173537916 |
| 1128821063  | 557442.5   | 593599.8    | -36157.3  | 36157.285   | 1307349259 |
| 1192721911  | 563668.2   | 594682.4    | -31014.2  | 31014.20672 | 961881018  |
| 1257311551  | 569176.8   | 595545.0    | -26368.2  | 26368.18196 | 695281020  |
| 1353749299  | 587564.8   | 596201.5    | -8636.7   | 8636.68784  | 74592376.8 |
| 1403699751  | 584631.3   | 596665.9    | -12034.6  | 12034.60148 | 144831633  |
| 1473724250  | 589489.7   | 596952.2    | -7462.5   | 7462.5      | 55688906.3 |
| 1514171630  | 582149.8   | 597074.4    | -14924.6  | 14924.56052 | 222742507  |
| 1620175960  | 599177.5   | 597046.4    | 2131.1    | 2131.13984  | 4541757.02 |
| 1677276372  | 597108     | 596882.2    | 225.8     | 225.82396   | 50996.4609 |
| 1763586302  | 604796.4   | 596595.8    | 8200.6    | 8200.61472  | 67250081.8 |
| 1834010915  | 606284.6   | 596201.2    | 10083.4   | 10083.435   | 101675661  |
| 1977692998  | 630641.9   | 595712.3    | 34929.6   | 34929.60768 | 1220077493 |
| 2068967749  | 636801.4   | 595143.1    | 41658.3   | 41658.25564 | 1735410263 |
| 0           |            | 594507.7    |           | 0           | 0          |
| 0           |            | 593819.9    |           | 0           | 0          |
| 0           |            | 593093.8    |           | 0           | 0          |
| 36246459825 | 26961516.7 | 26961562.51 | -45.80868 | 1385299.8   | 4.8678E+10 |

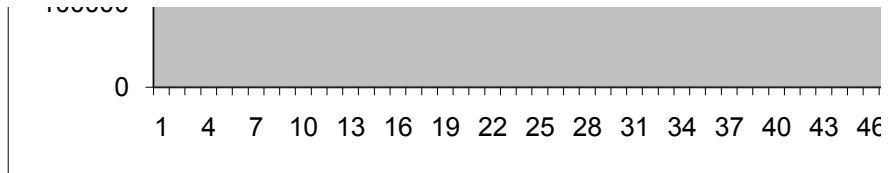


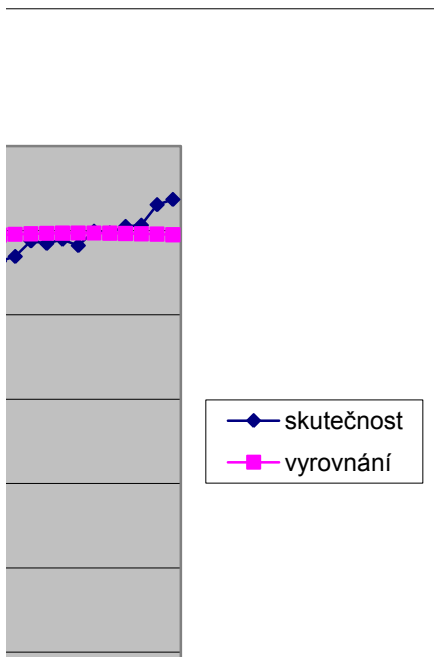
THEILovoU 0.11334

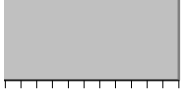
| APE    | MAPE     |
|--------|----------|
| 0.3535 | 0.214696 |
| 0.2187 | 0.122748 |
| 0.1078 | 0.056943 |
| 0.0856 | 0.044694 |
| 0.0267 | 0.013534 |
| 0.0483 | 0.023565 |
| 0.1176 | 0.055556 |
| 0.1089 | 0.051617 |
| 0.1290 | 0.060584 |
| 0.1500 | 0.069747 |
| 0.1616 | 0.074754 |
| 0.1199 | 0.056548 |
| 0.1193 | 0.056301 |
| 0.1367 | 0.063958 |
| 0.1588 | 0.073542 |
| 0.1040 | 0.049437 |
| 0.0057 | 0.002837 |
| 0.0251 | 0.012698 |
| 0.0028 | 0.00138  |
| 0.0417 | 0.021319 |
| 0.0570 | 0.029338 |
| 0.0708 | 0.036699 |
| 0.0789 | 0.041086 |
| 0.0991 | 0.052118 |
| 0.0990 | 0.052104 |
| 0.0756 | 0.039293 |
| 0.0403 | 0.020564 |
| 0.0167 | 0.008404 |
| 0.0241 | 0.012214 |
| 0.0036 | 0.001793 |
| 0.0003 | 0.000153 |
| 0.0073 | 0.003619 |
| 0.0183 | 0.009229 |
| 0.0343 | 0.017468 |
| 0.0374 | 0.019079 |
| 0.0408 | 0.020831 |
| 0.0355 | 0.018088 |
| 0.0260 | 0.01319  |
| 0.0018 | 0.00089  |
| 0.0301 | 0.014813 |
| 0.0465 | 0.022735 |
| 0.0635 | 0.030775 |
| 0.0771 | 0.037104 |



|        |          |
|--------|----------|
| 0.0614 | 0.029781 |
| 0.0649 | 0.031413 |
| 0.0550 | 0.026774 |
| 0.0463 | 0.022639 |
| 0.0147 | 0.007296 |
| 0.0206 | 0.010188 |
| 0.0127 | 0.00629  |
| 0.0256 | 0.012656 |
| 0.0036 | 0.001782 |
| 0.0004 | 0.000189 |
| 0.0136 | 0.006826 |
| 0.0166 | 0.008385 |
| 0.0554 | 0.028482 |
| 0.0654 | 0.033815 |
|        |          |
| 0.0642 | 0.0325   |







3 49 52 55

| čtvrtletí | pořadí | hodnota  | t <sup>2</sup> | t <sup>3</sup> | t <sup>4</sup> | t*yt       |
|-----------|--------|----------|----------------|----------------|----------------|------------|
| 1993Q1    | 1      | 179342.9 | 1              | 1              | 1              | 179342.9   |
| 1993Q2    | 2      | 179879.6 | 4              | 8              | 16             | 359759.2   |
| 1993Q3    | 3      | 184157.9 | 9              | 27             | 81             | 552473.7   |
| 1993Q4    | 4      | 204782.7 | 16             | 64             | 256            | 819130.8   |
| 1994Q1    | 5      | 215145.3 | 25             | 125            | 625            | 1075726.5  |
| 1994Q2    | 6      | 220120.4 | 36             | 216            | 1296           | 1320722.4  |
| 1994Q3    | 7      | 224857.6 | 49             | 343            | 2401           | 1574003.2  |
| 1994Q4    | 8      | 244498.9 | 64             | 512            | 4096           | 1955991.2  |
| 1995Q1    | 9      | 257013.4 | 81             | 729            | 6561           | 2313120.6  |
| 1995Q2    | 10     | 268251.6 | 100            | 1000           | 10000          | 2682516    |
| 1995Q3    | 11     | 280707.7 | 121            | 1331           | 14641          | 3087784.7  |
| 1995Q4    | 12     | 306236.9 | 144            | 1728           | 20736          | 3674842.8  |
| 1996Q1    | 13     | 320848.6 | 169            | 2197           | 28561          | 4171031.8  |
| 1996Q2    | 14     | 329595.1 | 196            | 2744           | 38416          | 4614331.4  |
| 1996Q3    | 15     | 336112.3 | 225            | 3375           | 50625          | 5041684.5  |
| 1996Q4    | 16     | 365625.2 | 256            | 4096           | 65536          | 5850003.2  |
| 1997Q1    | 17     | 414840.1 | 289            | 4913           | 83521          | 7052281.7  |
| 1997Q2    | 18     | 441183   | 324            | 5832           | 104976         | 7941294    |
| 1997Q3    | 19     | 443649.1 | 361            | 6859           | 130321         | 8429332.9  |
| 1997Q4    | 20     | 473921.5 | 400            | 8000           | 160000         | 9478430    |
| 1998Q1    | 21     | 493387.1 | 441            | 9261           | 194481         | 10361129.1 |
| 1998Q2    | 22     | 512073.8 | 484            | 10648          | 234256         | 11265623.6 |
| 1998Q3    | 23     | 527451.8 | 529            | 12167          | 279841         | 12131391.4 |
| 1998Q4    | 24     | 549745.5 | 576            | 13824          | 331776         | 13193892   |
| 1999Q1    | 25     | 559644.4 | 625            | 15625          | 390625         | 13991110   |
| 1999Q2    | 26     | 554565.3 | 676            | 17576          | 456976         | 14418697.8 |
| 1999Q3    | 27     | 542409.4 | 729            | 19683          | 531441         | 14645053.8 |
| 1999Q4    | 28     | 536933.7 | 784            | 21952          | 614656         | 15034143.6 |
| 2000Q1    | 29     | 548175   | 841            | 24389          | 707281         | 15897075   |
| 2000Q2    | 30     | 543395.4 | 900            | 27000          | 810000         | 16301862   |
| 2000Q3    | 31     | 547678.9 | 961            | 29791          | 923521         | 16978045.9 |
| 2000Q4    | 32     | 549152.9 | 1024           | 32768          | 1048576        | 17572892.8 |
| 2001Q1    | 33     | 568758.9 | 1089           | 35937          | 1185921        | 18769043.7 |
| 2001Q2    | 34     | 583195.2 | 1156           | 39304          | 1336336        | 19828636.8 |
| 2001Q3    | 35     | 589675.9 | 1225           | 42875          | 1500625        | 20638656.5 |
| 2001Q4    | 36     | 595970.9 | 1296           | 46656          | 1679616        | 21454952.4 |
| 2002Q1    | 37     | 596536.5 | 1369           | 50653          | 1874161        | 22071850.5 |
| 2002Q2    | 38     | 594155.3 | 1444           | 54872          | 2085136        | 22577901.4 |
| 2002Q3    | 39     | 580665.6 | 1521           | 59319          | 2313441        | 22645958.4 |
| 2002Q4    | 40     | 567335.8 | 1600           | 64000          | 2560000        | 22693432   |
| 2003Q1    | 41     | 560701.5 | 1681           | 68921          | 2825761        | 22988761.5 |
| 2003Q2    | 42     | 553728.3 | 1764           | 74088          | 3111696        | 23256588.6 |
| 2003Q3    | 43     | 548450.7 | 1849           | 79507          | 3418801        | 23583380.1 |
| 2003Q4    | 44     | 558026.2 | 1936           | 85184          | 3748096        | 24553152.8 |

|        |      |            |       |         |           |            |
|--------|------|------------|-------|---------|-----------|------------|
| 2004Q1 | 45   | 557442.5   | 2025  | 91125   | 4100625   | 25084912.5 |
| 2004Q2 | 46   | 563668.2   | 2116  | 97336   | 4477456   | 25928737.2 |
| 2004Q3 | 47   | 569176.8   | 2209  | 103823  | 4879681   | 26751309.6 |
| 2004Q4 | 48   | 587564.8   | 2304  | 110592  | 5308416   | 28203110.4 |
| 2005Q1 | 49   | 584631.3   | 2401  | 117649  | 5764801   | 28646933.7 |
| 2005Q2 | 50   | 589489.7   | 2500  | 125000  | 6250000   | 29474485   |
| 2005Q3 | 51   | 582149.8   | 2601  | 132651  | 6765201   | 29689639.8 |
| 2005Q4 | 52   | 599177.5   | 2704  | 140608  | 7311616   | 31157230   |
| 2006Q1 | 53   | 597108     | 2809  | 148877  | 7890481   | 31646724   |
| 2006Q2 | 54   | 604796.4   | 2916  | 157464  | 8503056   | 32659005.6 |
| 2006Q3 | 55   | 606284.6   | 3025  | 166375  | 9150625   | 33345653   |
| 2006Q4 | 56   | 630641.9   | 3136  | 175616  | 9834496   | 35315946.4 |
| 2007Q1 | 57   | 636801.4   | 3249  | 185193  | 10556001  | 36297679.8 |
| 2007Q2 | 58   |            | 3364  | 195112  | 11316496  |            |
| 2007Q3 | 59   |            | 3481  | 205379  | 12117361  |            |
| 2007Q4 | 60   |            | 3600  | 216000  | 12960000  |            |
| sumace | 1653 | 26961516.7 | 63365 | 2732409 | 125678141 | 903228402  |

|        |       |         |           |
|--------|-------|---------|-----------|
| $X'X=$ | 57    | 1653    | 63365     |
|        | 1653  | 63365   | 2732409   |
|        | 63365 | 2732409 | 125678141 |

$adj(X'X)=$

$det(X'X)$  2.93506E+12

|              |              |              |              |
|--------------|--------------|--------------|--------------|
| $(X'X)^{-1}$ | 0.169514696  | -0.011790841 | 0.000170882  |
|              | -0.011790841 | 0.00107273   | -1.73778E-05 |
|              | 0.000170882  | -1.73778E-05 | 2.99617E-07  |

|        |             |
|--------|-------------|
| $X'y=$ | 26961516.7  |
|        | 903228402.2 |
|        | 36246459825 |

|    |              |
|----|--------------|
| b1 | 114409.542   |
| b2 | 21137.25932  |
| b3 | -228.8284836 |

| $t^2 \cdot y_t$ | skutečnost | vyrovnání | rezidua  | abs.rezidua | rezidua <sup>2</sup> |
|-----------------|------------|-----------|----------|-------------|----------------------|
| 179342.9        | 179342.9   | 135318.0  | 44024.9  | 44024.92712 | 1938194208           |
| 719518.4        | 179879.6   | 155768.7  | 24110.9  | 24110.85325 | 581333244            |
| 1657421.1       | 184157.9   | 175761.9  | 8396.0   | 8396.03634  | 70493426.2           |
| 3276523.2       | 204782.7   | 195297.3  | 9485.4   | 9485.3764   | 89972365.5           |
| 5378632.5       | 215145.3   | 214375.1  | 770.2    | 770.1734273 | 593167.108           |
| 7924334.4       | 220120.4   | 232995.3  | -12874.9 | 12874.87258 | 165762344            |
| 11018022.4      | 224857.6   | 251157.8  | -26300.2 | 26300.16162 | 691698501            |
| 15647929.6      | 244498.9   | 268862.6  | -24363.7 | 24363.69369 | 593589570            |
| 20818085.4      | 257013.4   | 286109.8  | -29096.4 | 29096.36879 | 846598677            |
| 26825160        | 268251.6   | 302899.3  | -34647.7 | 34647.68693 | 1200462210           |
| 33965631.7      | 280707.7   | 319231.1  | -38523.4 | 38523.4481  | 1484056054           |
| 44098113.6      | 306236.9   | 335105.4  | -28868.5 | 28868.4523  | 833387538            |
| 54223413.4      | 320848.6   | 350521.9  | -29673.3 | 29673.29954 | 880504706            |
| 64600639.6      | 329595.1   | 365480.8  | -35885.7 | 35885.68981 | 1287782733           |
| 75625267.5      | 336112.3   | 379982.0  | -43869.7 | 43869.72311 | 1924552606           |
| 93600051.2      | 365625.2   | 394025.6  | -28400.4 | 28400.39945 | 806582689            |
| 119888788.9     | 414840.1   | 407611.5  | 7228.6   | 7228.581186 | 52252386             |
| 142943292       | 441183     | 420739.8  | 20443.2  | 20443.21878 | 417925194            |
| 160157325.1     | 443649.1   | 433410.4  | 10238.7  | 10238.71335 | 104831251            |
| 189568600       | 473921.5   | 445623.3  | 28298.2  | 28298.16489 | 800786136            |
| 217583711.1     | 493387.1   | 457378.6  | 36008.5  | 36008.47339 | 1296610156           |
| 247843719.2     | 512073.8   | 468676.3  | 43397.5  | 43397.53885 | 1883346379           |
| 279022002.2     | 527451.8   | 479516.2  | 47935.6  | 47935.56129 | 2297818036           |
| 316653408       | 549745.5   | 489898.6  | 59846.9  | 59846.94069 | 3581656310           |
| 349777750       | 559644.4   | 499823.2  | 59821.2  | 59821.17706 | 3578573225           |
| 374886142.8     | 554565.3   | 509290.2  | 45275.1  | 45275.0704  | 2049831999           |
| 395416452.6     | 542409.4   | 518299.6  | 24109.8  | 24109.8207  | 581283454            |
| 420956020.8     | 536933.7   | 526851.3  | 10082.4  | 10082.42797 | 101655354            |
| 461015175       | 548175     | 534945.3  | 13229.7  | 13229.69221 | 175024756            |
| 489055860       | 543395.4   | 542581.7  | 813.7    | 813.7134112 | 662129.516           |
| 526319422.9     | 547678.9   | 549760.4  | -2081.5  | 2081.508417 | 4332677.29           |
| 562332569.6     | 549152.9   | 556481.5  | -7328.6  | 7328.573278 | 53707986.3           |
| 619378442.1     | 568758.9   | 562744.9  | 6014.0   | 6014.018828 | 36168422.5           |
| 674173651.2     | 583195.2   | 568550.6  | 14644.6  | 14644.5679  | 214463369            |
| 722352977.5     | 589675.9   | 573898.7  | 15777.2  | 15777.17394 | 248919218            |
| 772378286.4     | 595970.9   | 578789.2  | 17181.7  | 17181.73695 | 295212085            |
| 816658468.5     | 596536.5   | 583221.9  | 13314.6  | 13314.55692 | 177277426            |
| 857960253.2     | 594155.3   | 587197.1  | 6958.2   | 6958.233863 | 48417018.5           |
| 883192377.6     | 580665.6   | 590714.5  | -10048.9 | 10048.93223 | 100981039            |
| 907737280       | 567335.8   | 593774.3  | -26438.5 | 26438.54135 | 698996469            |
| 942539221.5     | 560701.5   | 596376.5  | -35675.0 | 35674.99351 | 1272705162           |
| 976776721.2     | 553728.3   | 598521.0  | -44792.7 | 44792.6887  | 2006384961           |
| 1014085344      | 548450.7   | 600207.8  | -51757.1 | 51757.12692 | 2678800187           |
| 1080338723      | 558026.2   | 601437.0  | -43410.8 | 43410.80818 | 1884498267           |



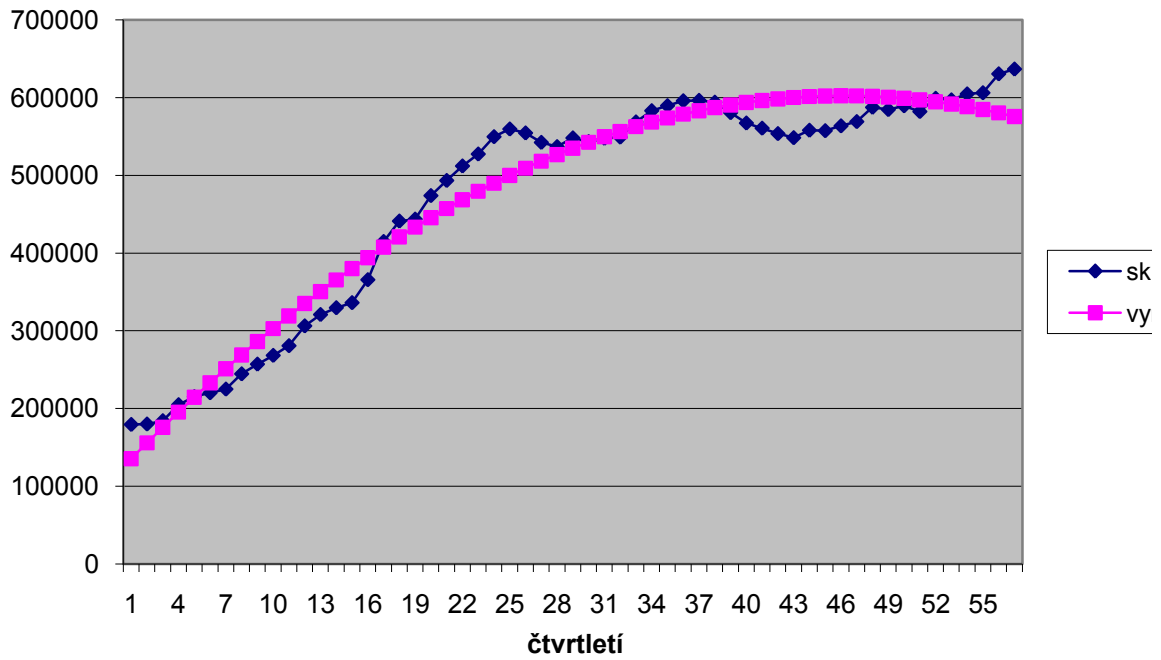
|             |            |            |             |             |            |
|-------------|------------|------------|-------------|-------------|------------|
| 1128821063  | 557442.5   | 602208.5   | -44766.0    | 44766.03247 | 2003997663 |
| 1192721911  | 563668.2   | 602522.4   | -38854.2    | 38854.19979 | 1509648841 |
| 1257311551  | 569176.8   | 602378.6   | -33201.8    | 33201.81014 | 1102360197 |
| 1353749299  | 587564.8   | 601777.2   | -14212.4    | 14212.36353 | 201991277  |
| 1403699751  | 584631.3   | 600718.1   | -16086.8    | 16086.75995 | 258783846  |
| 1473724250  | 589489.7   | 599201.3   | -9711.6     | 9711.599406 | 94315163   |
| 1514171630  | 582149.8   | 597226.9   | -15077.1    | 15077.08189 | 227318398  |
| 1620175960  | 599177.5   | 594794.8   | 4382.7      | 4382.692589 | 19207994.3 |
| 1677276372  | 597108     | 591905.1   | 5202.9      | 5202.924037 | 27070418.5 |
| 1763586302  | 604796.4   | 588557.7   | 16238.7     | 16238.71245 | 263695782  |
| 1834010915  | 606284.6   | 584752.6   | 21532.0     | 21531.95783 | 463625208  |
| 1977692998  | 630641.9   | 580489.9   | 50152.0     | 50151.96018 | 2515219110 |
| 2068967749  | 636801.4   | 575769.6   | 61031.8     | 61031.8195  | 3724882991 |
| 0           |            | 570591.6   |             | 0           | 0          |
| 0           |            | 564955.9   |             | 0           | 0          |
| 0           |            | 558862.6   |             | 0           | 0          |
| 36246459825 | 26961516.7 | 26961516.7 | -6.5542E-08 | 1451893.6   | 5.2451E+10 |

|             |           |           |
|-------------|-----------|-----------|
| 4.97536E+11 | 3.461E+10 | 501548852 |
| 34606870788 | 3.149E+09 | 51004968  |
| 501548852   | 51004968  | 879396    |

|           |         |
|-----------|---------|
| THEILovoU | 0.11603 |
|-----------|---------|

| APE    | AMAPE    |
|--------|----------|
| 0.2455 | 0.139912 |
| 0.1340 | 0.071834 |
| 0.0456 | 0.023328 |
| 0.0463 | 0.023709 |
| 0.0036 | 0.001793 |
| 0.0585 | 0.028414 |

vyrovnání kvadratickým trendem



|        |          |
|--------|----------|
| 0.0810 | 0.042958 |
| 0.0444 | 0.02273  |
| 0.0188 | 0.009478 |
| 0.0241 | 0.012214 |
| 0.0015 | 0.000749 |
| 0.0038 | 0.001897 |
| 0.0133 | 0.006628 |
| 0.0106 | 0.005315 |
| 0.0251 | 0.012715 |
| 0.0268 | 0.013559 |
| 0.0288 | 0.014626 |
| 0.0223 | 0.011286 |
| 0.0117 | 0.00589  |
| 0.0173 | 0.008579 |
| 0.0466 | 0.02277  |
| 0.0636 | 0.030832 |
| 0.0809 | 0.038874 |
| 0.0944 | 0.045059 |
| 0.0778 | 0.03744  |

|        |          |
|--------|----------|
| 0.0803 | 0.038603 |
| 0.0689 | 0.033317 |
| 0.0583 | 0.02834  |
| 0.0242 | 0.01195  |
| 0.0275 | 0.013571 |
| 0.0165 | 0.00817  |
| 0.0259 | 0.012784 |
| 0.0073 | 0.003671 |
| 0.0087 | 0.004376 |
| 0.0268 | 0.013608 |
| 0.0355 | 0.018078 |
| 0.0795 | 0.041409 |
| 0.0958 | 0.050333 |
|        |          |
| 0.0613 | 0.0307   |

utečnost  
rovnání

| čtvrtletí | pořadí | hodnota  | $t^2$ | $t \cdot yt$ |
|-----------|--------|----------|-------|--------------|
| 1993Q1    | 1      | 179342.9 | 1     | 179342.9     |
| 1993Q2    | 2      | 179879.6 | 4     | 359759.2     |
| 1993Q3    | 3      | 184157.9 | 9     | 552473.7     |
| 1993Q4    | 4      | 204782.7 | 16    | 819130.8     |
| 1994Q1    | 5      | 215145.3 | 25    | 1075726.5    |
| 1994Q2    | 6      | 220120.4 | 36    | 1320722.4    |
| 1994Q3    | 7      | 224857.6 | 49    | 1574003.2    |
| 1994Q4    | 8      | 244498.9 | 64    | 1955991.2    |
| 1995Q1    | 9      | 257013.4 | 81    | 2313120.6    |
| 1995Q2    | 10     | 268251.6 | 100   | 2682516      |
| 1995Q3    | 11     | 280707.7 | 121   | 3087784.7    |
| 1995Q4    | 12     | 306236.9 | 144   | 3674842.8    |
| 1996Q1    | 13     | 320848.6 | 169   | 4171031.8    |
| 1996Q2    | 14     | 329595.1 | 196   | 4614331.4    |
| 1996Q3    | 15     | 336112.3 | 225   | 5041684.5    |
| 1996Q4    | 16     | 365625.2 | 256   | 5850003.2    |
| 1997Q1    | 17     | 414840.1 | 289   | 7052281.7    |
| 1997Q2    | 18     | 441183   | 324   | 7941294      |
| 1997Q3    | 19     | 443649.1 | 361   | 8429332.9    |
| 1997Q4    | 20     | 473921.5 | 400   | 9478430      |
| 1998Q1    | 21     | 493387.1 | 441   | 10361129.1   |
| 1998Q2    | 22     | 512073.8 | 484   | 11265623.6   |
| 1998Q3    | 23     | 527451.8 | 529   | 12131391.4   |
| 1998Q4    | 24     | 549745.5 | 576   | 13193892     |
| 1999Q1    | 25     | 559644.4 | 625   | 13991110     |
| 1999Q2    | 26     | 554565.3 | 676   | 14418697.8   |
| 1999Q3    | 27     | 542409.4 | 729   | 14645053.8   |
| 1999Q4    | 28     | 536933.7 | 784   | 15034143.6   |
| 2000Q1    | 29     | 548175   | 841   | 15897075     |
| 2000Q2    | 30     | 543395.4 | 900   | 16301862     |
| 2000Q3    | 31     | 547678.9 | 961   | 16978045.9   |
| 2000Q4    | 32     | 549152.9 | 1024  | 17572892.8   |
| 2001Q1    | 33     | 568758.9 | 1089  | 18769043.7   |
| 2001Q2    | 34     | 583195.2 | 1156  | 19828636.8   |
| 2001Q3    | 35     | 589675.9 | 1225  | 20638656.5   |
| 2001Q4    | 36     | 595970.9 | 1296  | 21454952.4   |
| 2002Q1    | 37     | 596536.5 | 1369  | 22071850.5   |
| 2002Q2    | 38     | 594155.3 | 1444  | 22577901.4   |
| 2002Q3    | 39     | 580665.6 | 1521  | 22645958.4   |
| 2002Q4    | 40     | 567335.8 | 1600  | 22693432     |
| 2003Q1    | 41     | 560701.5 | 1681  | 22988761.5   |
| 2003Q2    | 42     | 553728.3 | 1764  | 23256588.6   |
| 2003Q3    | 43     | 548450.7 | 1849  | 23583380.1   |

| skutečnost | vyrovnání |
|------------|-----------|
| 179342.9   | 252783.3  |
| 179879.6   | 260648.5  |
| 184157.9   | 268513.7  |
| 204782.7   | 276378.9  |
| 215145.3   | 284244.1  |
| 220120.4   | 292109.3  |
| 224857.6   | 299974.5  |
| 244498.9   | 307839.7  |
| 257013.4   | 315704.9  |
| 268251.6   | 323570.1  |
| 280707.7   | 331435.3  |
| 306236.9   | 339300.5  |
| 320848.6   | 347165.7  |
| 329595.1   | 355031.0  |
| 336112.3   | 362896.2  |
| 365625.2   | 370761.4  |
| 414840.1   | 378626.6  |
| 441183     | 386491.8  |
| 443649.1   | 394357.0  |
| 473921.5   | 402222.2  |
| 493387.1   | 410087.4  |
| 512073.8   | 417952.6  |
| 527451.8   | 425817.8  |
| 549745.5   | 433683.0  |
| 559644.4   | 441548.2  |
| 554565.3   | 449413.4  |
| 542409.4   | 457278.7  |
| 536933.7   | 465143.9  |
| 548175     | 473009.1  |
| 543395.4   | 480874.3  |
| 547678.9   | 488739.5  |
| 549152.9   | 496604.7  |
| 568758.9   | 504469.9  |
| 583195.2   | 512335.1  |
| 589675.9   | 520200.3  |
| 595970.9   | 528065.5  |
| 596536.5   | 535930.7  |
| 594155.3   | 543795.9  |
| 580665.6   | 551661.1  |
| 567335.8   | 559526.3  |
| 560701.5   | 567391.6  |
| 553728.3   | 575256.8  |
| 548450.7   | 583122.0  |

|        |      |          |       |            |
|--------|------|----------|-------|------------|
| 2003Q4 | 44   | 558026.2 | 1936  | 24553152.8 |
| 2004Q1 | 45   | 557442.5 | 2025  | 25084912.5 |
| 2004Q2 | 46   | 563668.2 | 2116  | 25928737.2 |
| 2004Q3 | 47   | 569176.8 | 2209  | 26751309.6 |
| 2004Q4 | 48   | 587564.8 | 2304  | 28203110.4 |
| 2005Q1 | 49   | 584631.3 | 2401  | 28646933.7 |
| 2005Q2 | 50   | 589489.7 | 2500  | 29474485   |
| 2005Q3 | 51   | 582149.8 | 2601  | 29689639.8 |
| 2005Q4 | 52   | 599177.5 | 2704  | 31157230   |
| 2006Q1 | 53   | 597108   | 2809  | 31646724   |
| 2006Q2 | 54   | 604796.4 | 2916  | 32659005.6 |
| 2006Q3 | 55   | 606284.6 | 3025  | 33345653   |
| 2006Q4 | 56   | 630641.9 | 3136  | 35315946.4 |
| 2007Q1 | 57   | 636801.4 | 3249  | 36297679.8 |
| 2007Q2 | 58   |          | 3364  | 0          |
| 2007Q3 | 59   |          | 3481  | 0          |
| 2007Q4 | 60   |          | 3600  | 0          |
| sumace | 1653 | 26961517 | 63365 | 903228402  |

|          |            |
|----------|------------|
| 558026.2 | 590987.2   |
| 557442.5 | 598852.4   |
| 563668.2 | 606717.6   |
| 569176.8 | 614582.8   |
| 587564.8 | 622448.0   |
| 584631.3 | 630313.2   |
| 589489.7 | 638178.4   |
| 582149.8 | 646043.6   |
| 599177.5 | 653908.8   |
| 597108   | 661774.0   |
| 604796.4 | 669639.2   |
| 606284.6 | 677504.5   |
| 630641.9 | 685369.7   |
| 636801.4 | 693234.9   |
|          | 701100.1   |
|          | 708965.3   |
|          | 716830.5   |
| 26961517 | 26961516.7 |

|           |      |       |
|-----------|------|-------|
| $X^T X =$ | 57   | 1653  |
|           | 1653 | 63365 |

|           |         |
|-----------|---------|
| THEILovoU | 0.17528 |
|-----------|---------|

|               |        |
|---------------|--------|
| $\det(X^T X)$ | 879396 |
|---------------|--------|

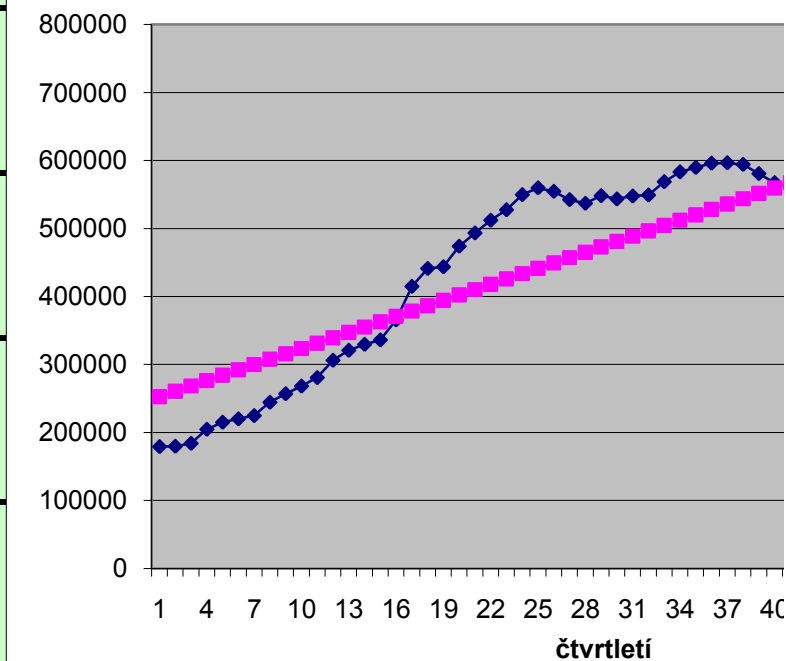
|                |          |          |
|----------------|----------|----------|
| $(X^T X)^{-1}$ | 0.072055 | -0.00188 |
|                | -0.00188 | 6.48E-05 |

|           |          |
|-----------|----------|
| $X^T y =$ | 26961517 |
|           | 9.03E+08 |

|    |          |
|----|----------|
| b1 | 244918.1 |
| b2 | 7865.207 |

| rezidua  | abs.rezidua | rezidua^2  | APE    | MAPE     |
|----------|-------------|------------|--------|----------|
| -73440.4 | 73440.361   | 5393486639 | 0.4095 | 0.169951 |
| -80768.9 | 80768.868   | 6523610099 | 0.4490 | 0.183346 |
| -84355.8 | 84355.776   | 7115896887 | 0.4581 | 0.186351 |
| -71596.2 | 71596.183   | 5126013411 | 0.3496 | 0.148799 |
| -69098.8 | 69098.79    | 4774642809 | 0.3212 | 0.138367 |
| -71988.9 | 71988.897   | 5182401363 |        |          |
| -75116.9 | 75116.905   | 5642549383 |        |          |
| -63340.8 | 63340.812   | 4012058472 |        |          |
| -58691.5 | 58691.519   | 3444694442 |        |          |
| -55318.5 | 55318.527   | 3060139386 |        |          |
| -50727.6 | 50727.634   | 2573292840 |        |          |
| -33063.6 | 33063.641   | 1093204367 |        |          |
| -26317.1 | 26317.148   | 692592302  |        |          |
| -25435.9 | 25435.856   | 646982757  |        |          |
| -26783.9 | 26783.863   | 717375318  |        |          |
| -5136.2  | 5136.1703   | 26380245.2 |        |          |
| 36213.5  | 36213.522   | 1311419207 |        |          |
| 54691.2  | 54691.215   | 2991129015 |        |          |
| 49292.1  | 49292.108   | 2429711899 |        |          |
| 71699.3  | 71699.301   | 5140789706 |        |          |
| 83299.7  | 83299.693   | 6938838907 |        |          |
| 94121.2  | 94121.186   | 8858797662 |        |          |
| 101634.0 | 101633.98   | 1.0329E+10 |        |          |
| 116062.5 | 116062.47   | 1.347E+10  |        |          |
| 118096.2 | 118096.16   | 1.3947E+10 |        |          |
| 105151.9 | 105151.86   | 1.1057E+10 | 0.1896 | 0.104735 |
| 85130.7  | 85130.75    | 7247244535 | 0.1569 | 0.085157 |
| 71789.8  | 71789.842   | 5153781467 | 0.1337 | 0.071641 |
| 75165.9  | 75165.935   | 5649917798 | 0.1371 | 0.073607 |
| 62521.1  | 62521.128   | 3908891422 | 0.1151 | 0.06104  |
| 58939.4  | 58939.421   | 3473855292 | 0.1076 | 0.056868 |
| 52548.2  | 52548.213   | 2761314716 | 0.0957 | 0.050249 |
| 64289.0  | 64289.006   | 4133076289 | 0.1130 | 0.059902 |
| 70860.1  | 70860.099   | 5021153587 | 0.1215 | 0.064681 |
| 69475.6  | 69475.591   | 4826857802 | 0.1178 | 0.062598 |
| 67905.4  | 67905.384   | 4611141195 | 0.1139 | 0.060412 |
| 60605.8  | 60605.777   | 3673060188 | 0.1016 | 0.053517 |
| 50359.4  | 50359.37    | 2536066104 | 0.0848 | 0.044254 |
| 29004.5  | 29004.462   | 841258833  | 0.0500 | 0.025615 |
| 7809.5   | 7809.455    | 60987587.7 | 0.0138 | 0.00693  |
| -6690.1  | 6690.0523   | 44756799.2 | 0.0119 | 0.00593  |
| -21528.5 | 21528.46    | 463474570  | 0.0389 | 0.019069 |
| -34671.3 | 34671.267   | 1202096743 | 0.0632 | 0.03064  |

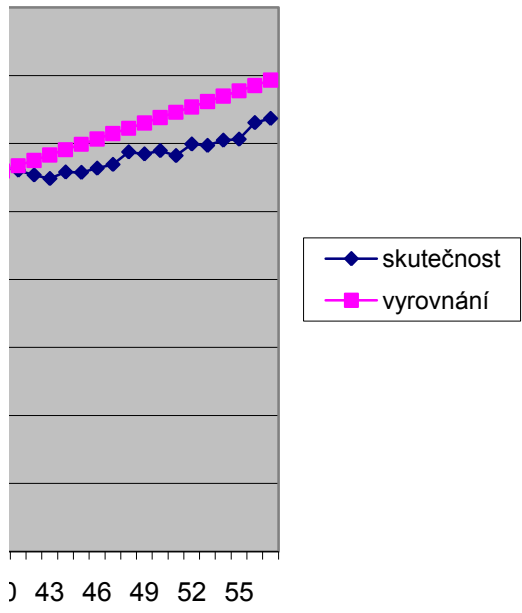
vyrovnání lineárním tre



|          |           |            |        |          |
|----------|-----------|------------|--------|----------|
| -32961.0 | 32960.974 | 1086425813 | 0.0591 | 0.028686 |
| -41409.9 | 41409.881 | 1714778276 | 0.0743 | 0.035813 |
| -43049.4 | 43049.389 | 1853249864 | 0.0764 | 0.036782 |
| -45406.0 | 45405.996 | 2061704467 | 0.0798 | 0.038357 |
| -34883.2 | 34883.203 | 1216837866 | 0.0594 | 0.028829 |
| -45681.9 | 45681.91  | 2086836946 | 0.0781 | 0.0376   |
| -48688.7 | 48688.718 | 2370591238 | 0.0826 | 0.03966  |
| -63893.8 | 63893.825 | 4082420879 | 0.1098 | 0.052023 |
| -54731.3 | 54731.332 | 2995518738 | 0.0913 | 0.043677 |
| -64666.0 | 64666.04  | 4181696679 | 0.1083 | 0.051368 |
| -64842.8 | 64842.847 | 4204594792 | 0.1072 | 0.05088  |
| -71219.9 | 71219.854 | 5072267627 | 0.1175 | 0.055476 |
| -54727.8 | 54727.761 | 2995127873 | 0.0868 | 0.041586 |
| -56433.5 | 56433.469 | 3184736392 | 0.0886 | 0.04243  |
|          | 0         | 0          |        |          |
|          | 0         | 0          |        |          |
|          | 0         | 0          |        |          |
| 2.64E-08 | 3313331.9 | 2.2722E+11 | 0.1458 | 0.0699   |



ndem



| čtvrtletí | pořadí | ln(pořadí) | hodnota  | ln <sup>2</sup> t | t*yt     | skutečnost |
|-----------|--------|------------|----------|-------------------|----------|------------|
| 1993Q1    | 1      | 0          | 179342.9 | 0                 | 0        | 179342.9   |
| 1993Q2    | 2      | 0.693147   | 179879.6 | 0.480453014       | 124683   | 179879.6   |
| 1993Q3    | 3      | 1.098612   | 184157.9 | 1.206948961       | 202318.1 | 184157.9   |
| 1993Q4    | 4      | 1.386294   | 204782.7 | 1.921812056       | 283889.1 | 204782.7   |
| 1994Q1    | 5      | 1.609438   | 215145.3 | 2.590290394       | 346263   | 215145.3   |
| 1994Q2    | 6      | 1.791759   | 220120.4 | 3.210401996       | 394402.8 | 220120.4   |
| 1994Q3    | 7      | 1.94591    | 224857.6 | 3.786566308       | 437552.7 | 224857.6   |
| 1994Q4    | 8      | 2.079442   | 244498.9 | 4.324077125       | 508421.2 | 244498.9   |
| 1995Q1    | 9      | 2.197225   | 257013.4 | 4.827795843       | 564716.2 | 257013.4   |
| 1995Q2    | 10     | 2.302585   | 268251.6 | 5.30189811        | 617672.1 | 268251.6   |
| 1995Q3    | 11     | 2.397895   | 280707.7 | 5.749901739       | 673107.7 | 280707.7   |
| 1995Q4    | 12     | 2.484907   | 306236.9 | 6.174761058       | 760970.1 | 306236.9   |
| 1996Q1    | 13     | 2.564949   | 320848.6 | 6.578965206       | 822960.4 | 320848.6   |
| 1996Q2    | 14     | 2.639057   | 329595.1 | 6.964623589       | 869820.4 | 329595.1   |
| 1996Q3    | 15     | 2.70805    | 336112.3 | 7.333535892       | 910209   | 336112.3   |
| 1996Q4    | 16     | 2.772589   | 365625.2 | 7.687248223       | 1013728  | 365625.2   |
| 1997Q1    | 17     | 2.833213   | 414840.1 | 8.027097853       | 1175331  | 414840.1   |
| 1997Q2    | 18     | 2.890372   | 441183   | 8.354248899       | 1275183  | 441183     |
| 1997Q3    | 19     | 2.944439   | 443649.1 | 8.669720902       | 1306298  | 443649.1   |
| 1997Q4    | 20     | 2.995732   | 473921.5 | 8.974411855       | 1419742  | 473921.5   |
| 1998Q1    | 21     | 3.044522   | 493387.1 | 9.269116874       | 1502128  | 493387.1   |
| 1998Q2    | 22     | 3.091042   | 512073.8 | 9.554543448       | 1582842  | 512073.8   |
| 1998Q3    | 23     | 3.135494   | 527451.8 | 9.831323978       | 1653822  | 527451.8   |
| 1998Q4    | 24     | 3.178054   | 549745.5 | 10.10002615       | 1747121  | 549745.5   |
| 1999Q1    | 25     | 3.218876   | 559644.4 | 10.36116158       | 1801426  | 559644.4   |
| 1999Q2    | 26     | 3.258097   | 554565.3 | 10.61519305       | 1806827  | 554565.3   |
| 1999Q3    | 27     | 3.295837   | 542409.4 | 10.86254065       | 1787693  | 542409.4   |
| 1999Q4    | 28     | 3.332205   | 536933.7 | 11.1035869        | 1789173  | 536933.7   |
| 2000Q1    | 29     | 3.367296   | 548175   | 11.33868121       | 1845867  | 548175     |
| 2000Q2    | 30     | 3.401197   | 543395.4 | 11.56814363       | 1848195  | 543395.4   |
| 2000Q3    | 31     | 3.433987   | 547678.9 | 11.79226812       | 1880722  | 547678.9   |
| 2000Q4    | 32     | 3.465736   | 549152.9 | 12.01132535       | 1903219  | 549152.9   |
| 2001Q1    | 33     | 3.496508   | 568758.9 | 12.22556513       | 1988670  | 568758.9   |
| 2001Q2    | 34     | 3.526361   | 583195.2 | 12.43521855       | 2056557  | 583195.2   |
| 2001Q3    | 35     | 3.555348   | 589675.9 | 12.64049984       | 2096503  | 589675.9   |
| 2001Q4    | 36     | 3.583519   | 595970.9 | 12.84160798       | 2135673  | 595970.9   |
| 2002Q1    | 37     | 3.610918   | 596536.5 | 13.03872817       | 2154044  | 596536.5   |
| 2002Q2    | 38     | 3.637586   | 594155.3 | 13.23203307       | 2161291  | 594155.3   |
| 2002Q3    | 39     | 3.663562   | 580665.6 | 13.42168393       | 2127304  | 580665.6   |
| 2002Q4    | 40     | 3.688879   | 567335.8 | 13.60783163       | 2092833  | 567335.8   |
| 2003Q1    | 41     | 3.713572   | 560701.5 | 13.79061749       | 2082205  | 560701.5   |
| 2003Q2    | 42     | 3.73767    | 553728.3 | 13.97017418       | 2069653  | 553728.3   |
| 2003Q3    | 43     | 3.7612     | 548450.7 | 14.14662631       | 2062833  | 548450.7   |

|        |      |          |            |             |          |            |
|--------|------|----------|------------|-------------|----------|------------|
| 2003Q4 | 44   | 3.78419  | 558026.2   | 14.32009119 | 2111677  | 558026.2   |
| 2004Q1 | 45   | 3.806662 | 557442.5   | 14.49067931 | 2121995  | 557442.5   |
| 2004Q2 | 46   | 3.828641 | 563668.2   | 14.65849494 | 2158083  | 563668.2   |
| 2004Q3 | 47   | 3.850148 | 569176.8   | 14.82363655 | 2191415  | 569176.8   |
| 2004Q4 | 48   | 3.871201 | 587564.8   | 14.98619727 | 2274581  | 587564.8   |
| 2005Q1 | 49   | 3.89182  | 584631.3   | 15.14626523 | 2275280  | 584631.3   |
| 2005Q2 | 50   | 3.912023 | 589489.7   | 15.30392399 | 2306097  | 589489.7   |
| 2005Q3 | 51   | 3.931826 | 582149.8   | 15.45925281 | 2288912  | 582149.8   |
| 2005Q4 | 52   | 3.951244 | 599177.5   | 15.61232692 | 2367496  | 599177.5   |
| 2006Q1 | 53   | 3.970292 | 597108     | 15.76321788 | 2370693  | 597108     |
| 2006Q2 | 54   | 3.988984 | 604796.4   | 15.91199372 | 2412523  | 604796.4   |
| 2006Q3 | 55   | 4.007333 | 606284.6   | 16.05871926 | 2429584  | 606284.6   |
| 2006Q4 | 56   | 4.025352 | 630641.9   | 16.20345623 | 2538555  | 630641.9   |
| 2007Q1 | 57   | 4.043051 | 636801.4   | 16.34626355 | 2574621  | 636801.4   |
| 2007Q2 | 58   | 4.060443 |            | 16.48719744 | 0        |            |
| 2007Q3 | 59   | 4.077537 |            | 16.62631161 | 0        |            |
| 2007Q4 | 60   | 4.094345 |            | 16.76365739 | 0        |            |
| sumace | 1653 | 176.3958 | 26961516.7 | 591.0077751 | 90305383 | 26961516.7 |

$$X^T X = \begin{bmatrix} 57 & 176.3958484 \\ 176.3958484 & 591.0077751 \end{bmatrix}$$

THEILOvoU

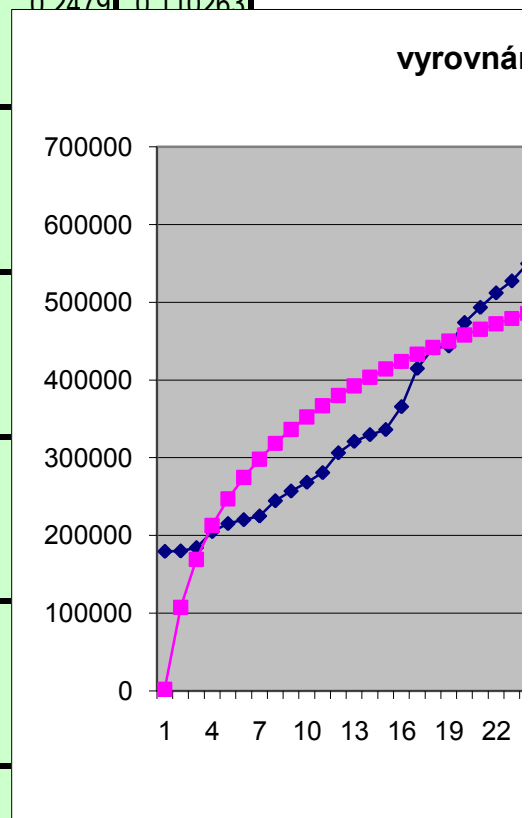
$$\det(X^T X) = 2571.947845$$

$$(X^T X)^{-1} = \begin{bmatrix} 0.22978995 & -0.06858454 \\ -0.06858454 & 0.02216219 \end{bmatrix}$$

$$X^T y = \begin{bmatrix} 26961517 \\ 90305383 \end{bmatrix}$$

$$\begin{bmatrix} b1 \\ b2 \end{bmatrix} = \begin{bmatrix} 1932.882 \\ 152222.077 \end{bmatrix}$$

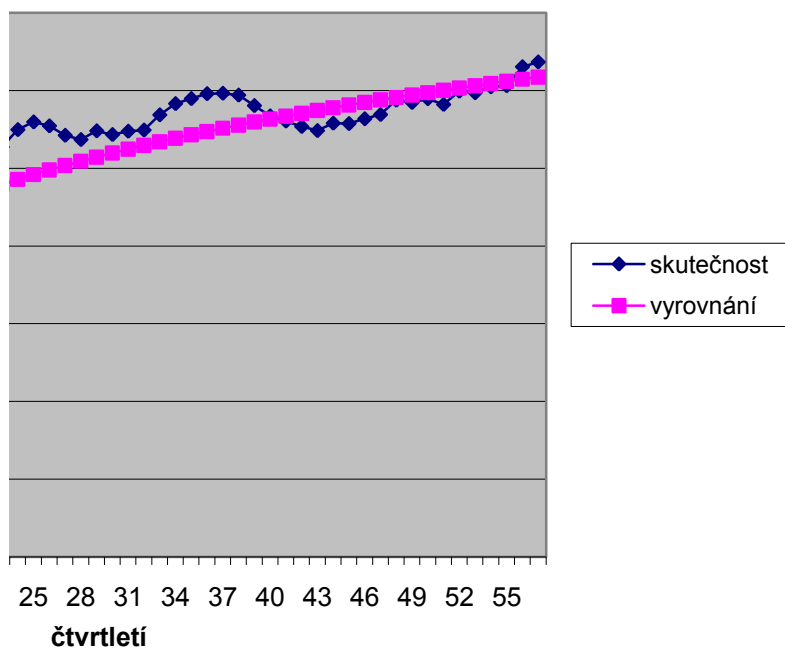
| vyrovnání | rezidua  | abs.rezidua | rezidua^2   | APE    | MAPE     |
|-----------|----------|-------------|-------------|--------|----------|
| 1932.9    | 177410.0 | 177410.018  | 31474314659 | 0.9892 | 0.978675 |
| 107445.2  | 72434.4  | 72434.4149  | 5246744456  | 0.4027 | 0.252099 |
| 169165.9  | 14992.0  | 14991.9739  | 224759280.5 | 0.0814 | 0.042431 |
| 212957.5  | -8174.8  | 8174.78877  | 66827171.46 | 0.0399 | 0.019569 |
| 246924.9  | -31779.6 | 31779.5637  | 1009940667  | 0.1477 | 0.068776 |
| 274678.2  | -54557.8 | 54557.8298  | 2976556788  | 0.2479 | 0.110263 |
| 298143.4  | -73285.8 | 73285.7664  | 5370803563  |        |          |
| 318469.8  | -73970.9 | 73970.8924  | 5471692923  |        |          |
| 336399.0  | -79385.6 | 79385.5707  | 6302068843  |        |          |
| 352437.2  | -84185.6 | 84185.5673  | 7087209741  |        |          |
| 366945.5  | -86237.8 | 86237.7808  | 7436954845  |        |          |
| 380190.5  | -73953.6 | 73953.6334  | 5469139891  |        |          |
| 392374.8  | -71526.2 | 71526.2006  | 5115997375  |        |          |
| 403655.7  | -74060.6 | 74060.5701  | 5484968040  |        |          |
| 414157.9  | -78045.6 | 78045.6083  | 6091116972  |        |          |
| 423982.1  | -58356.9 | 58356.896   | 3405527314  |        |          |
| 433210.5  | -18370.4 | 18370.4019  | 337471665.7 |        |          |
| 441911.3  | -728.3   | 728.274377  | 530383.5678 |        |          |
| 450141.5  | -6492.4  | 6492.39911  | 42151246.16 |        |          |
| 457949.5  | 15972.0  | 15972.0291  | 255105712.8 |        |          |
| 465376.4  | 28010.7  | 28010.6889  | 784598694.8 |        |          |
| 472457.8  | 39616.0  | 39616.0155  | 1569428686  |        |          |
| 479224.3  | 48227.5  | 48227.4759  | 2325889431  |        |          |
| 485702.8  | 64042.7  | 64042.663   | 4101462682  |        |          |
| 491916.8  | 67727.6  | 67727.5542  | 4587021595  |        |          |
| 497887.1  | 56678.2  | 56678.1958  | 3212417874  | 0.1022 | 0.053855 |
| 503632.0  | 38777.4  | 38777.3846  | 1503685559  | 0.0715 | 0.037071 |
| 509168.0  | 27765.7  | 27765.7263  | 770935556.8 | 0.0517 | 0.026542 |
| 514509.6  | 33665.4  | 33665.3527  | 1133355973  | 0.0614 | 0.03168  |
| 519670.2  | 23725.2  | 23725.1881  | 562884549.8 | 0.0437 | 0.022318 |
| 524661.5  | 23017.4  | 23017.3531  | 529798545.9 | 0.0420 | 0.021465 |
| 529494.4  | 19658.5  | 19658.5003  | 386456635.6 | 0.0358 | 0.018225 |
| 534178.5  | 34580.4  | 34580.3745  | 1195802303  | 0.0608 | 0.031353 |
| 538722.8  | 44472.4  | 44472.3945  | 1977793871  | 0.0763 | 0.03964  |
| 543135.3  | 46540.6  | 46540.5514  | 2166022925  | 0.0789 | 0.041084 |
| 547423.6  | 48547.3  | 48547.322   | 2356842473  | 0.0815 | 0.042459 |
| 551594.3  | 44942.2  | 44942.1932  | 2019800732  | 0.0753 | 0.039144 |
| 555653.8  | 38501.5  | 38501.4973  | 1482365292  | 0.0648 | 0.033485 |
| 559607.8  | 21057.8  | 21057.7548  | 443429035.8 | 0.0363 | 0.018467 |
| 563461.8  | 3874.0   | 3874.02545  | 15008073.16 | 0.0068 | 0.003426 |
| 567220.5  | -6519.0  | 6519.03533  | 42497821.69 | 0.0116 | 0.00578  |
| 570888.7  | -17160.4 | 17160.4147  | 294479832.4 | 0.0310 | 0.015259 |
| 574470.6  | -26019.9 | 26019.8759  | 677033941   | 0.0474 | 0.023172 |



|            |            |            |             |        |          |
|------------|------------|------------|-------------|--------|----------|
| 577970.1   | -19943.9   | 19943.8881 | 397758672.6 | 0.0357 | 0.017556 |
| 581391.0   | -23948.5   | 23948.4529 | 573528396.3 | 0.0430 | 0.021029 |
| 584736.6   | -21068.4   | 21068.4277 | 443878647.3 | 0.0374 | 0.018346 |
| 588010.3   | -18833.5   | 18833.547  | 354702491.4 | 0.0331 | 0.016275 |
| 591215.1   | -3650.3    | 3650.34065 | 13324986.84 | 0.0062 | 0.003097 |
| 594353.9   | -9722.6    | 9722.55138 | 94528005.25 | 0.0166 | 0.008247 |
| 597429.1   | -7939.4    | 7939.44945 | 63034857.55 | 0.0135 | 0.006689 |
| 600443.5   | -18293.7   | 18293.7465 | 334661161.4 | 0.0314 | 0.015469 |
| 603399.4   | -4221.9    | 4221.90787 | 17824506.1  | 0.0070 | 0.003511 |
| 606299.0   | -9191.0    | 9190.96368 | 84473813.36 | 0.0154 | 0.007637 |
| 609144.3   | -4347.9    | 4347.91899 | 18904399.58 | 0.0072 | 0.003582 |
| 611937.5   | -5652.9    | 5652.863   | 31954860.06 | 0.0093 | 0.00464  |
| 614680.3   | 15961.6    | 15961.6227 | 254773398.2 | 0.0253 | 0.012817 |
| 617374.5   | 19426.9    | 19426.8563 | 377402744.8 | 0.0305 | 0.01549  |
| 620022.0   |            | 0          | 0           |        |          |
| 622624.1   |            | 0          | 0           |        |          |
| 625182.5   |            | 0          | 0           |        |          |
| 26961516.7 | -1.892E-08 | 2.1393E+06 | 1.3607E+11  | 0.1122 | 0.0628   |

0.14084

## ní logaritmickým trendem



| čtvrtletí | pořadí | hodnota  |
|-----------|--------|----------|
| 1993Q1    | 1      | 179342.9 |
| 1993Q2    | 2      | 179879.6 |
| 1993Q3    | 3      | 184157.9 |
| 1993Q4    | 4      | 204782.7 |
| 1994Q1    | 5      | 215145.3 |
| 1994Q2    | 6      | 220120.4 |
| 1994Q3    | 7      | 224857.6 |
| 1994Q4    | 8      | 244498.9 |
| 1995Q1    | 9      | 257013.4 |
| 1995Q2    | 10     | 268251.6 |
| 1995Q3    | 11     | 280707.7 |
| 1995Q4    | 12     | 306236.9 |
| 1996Q1    | 13     | 320848.6 |
| 1996Q2    | 14     | 329595.1 |
| 1996Q3    | 15     | 336112.3 |
| 1996Q4    | 16     | 365625.2 |
| 1997Q1    | 17     | 414840.1 |
| 1997Q2    | 18     | 441183   |
| 1997Q3    | 19     | 443649.1 |
| 1997Q4    | 20     | 473921.5 |
| 1998Q1    | 21     | 493387.1 |
| 1998Q2    | 22     | 512073.8 |
| 1998Q3    | 23     | 527451.8 |
| 1998Q4    | 24     | 549745.5 |
| 1999Q1    | 25     | 559644.4 |
| 1999Q2    | 26     | 554565.3 |
| 1999Q3    | 27     | 542409.4 |
| 1999Q4    | 28     | 536933.7 |
| 2000Q1    | 29     | 548175   |
| 2000Q2    | 30     | 543395.4 |
| 2000Q3    | 31     | 547678.9 |
| 2000Q4    | 32     | 549152.9 |
| 2001Q1    | 33     | 568758.9 |
| 2001Q2    | 34     | 583195.2 |
| 2001Q3    | 35     | 589675.9 |
| 2001Q4    | 36     | 595970.9 |
| 2002Q1    | 37     | 596536.5 |
| 2002Q2    | 38     | 594155.3 |
| 2002Q3    | 39     | 580665.6 |
| 2002Q4    | 40     | 567335.8 |
| 2003Q1    | 41     | 560701.5 |
| 2003Q2    | 42     | 553728.3 |
| 2003Q3    | 43     | 548450.7 |

|        |    |          |
|--------|----|----------|
| 2003Q4 | 44 | 558026.2 |
| 2004Q1 | 45 | 557442.5 |
| 2004Q2 | 46 | 563668.2 |
| 2004Q3 | 47 | 569176.8 |
| 2004Q4 | 48 | 587564.8 |
| 2005Q1 | 49 | 584631.3 |
| 2005Q2 | 50 | 589489.7 |
| 2005Q3 | 51 | 582149.8 |
| 2005Q4 | 52 | 599177.5 |
| 2006Q1 | 53 | 597108   |
| 2006Q2 | 54 | 604796.4 |
| 2006Q3 | 55 | 606284.6 |
| 2006Q4 | 56 | 630641.9 |
| 2007Q1 | 57 | 636801.4 |
| 2007Q2 | 58 |          |
| 2007Q3 | 59 |          |
| 2007Q4 | 60 |          |



| trendová funkce |                     | SE           | SAE        | SSE        | MAE        |
|-----------------|---------------------|--------------|------------|------------|------------|
| 1               | lineární trend      | 2.64000E-08  | 3.3133E+06 | 2.2722E+11 | 5.8129E+04 |
| 2               | kvadratický trend   | -6.55420E-08 | 1.4519E+06 | 5.2451E+10 | 2.5472E+04 |
| 3               | kubický trend       | 4.58087E+01  | 1.3853E+06 | 4.8678E+10 | 2.4304E+04 |
| 5               | bikvadratický trend | -4.10581E+00 | 7.5257E+05 | 1.4670E+10 | 1.3203E+04 |
| 6               | mocninný trend      | 1.59603E+05  | 2.3029E+06 | 1.1201E+11 | 4.0403E+04 |
| 7               | logaritmický trend  | -1.89200E-08 | 2.1393E+06 | 1.3607E+11 | 3.7532E+04 |
| 8               | exponenciální trend | 2.22417E+05  | 4.3553E+06 | 4.2900E+11 | 7.6409E+04 |
| 9               | modifik.expon.trend | 3.53080E+01  | 2.3056E+06 | 2.3929E+11 | 4.0449E+04 |
| 9               | logistický trend    | -4.15341E+05 | 1.3607E+06 | 5.1243E+10 | 2.3872E+04 |
| 10              | Gompertzův trend    | -3.98515E+05 | 1.6475E+06 | 8.1573E+10 | 2.8903E+04 |

| MSE        | RMSE     | MAPE  | AMAPE | THEIL' U |  |
|------------|----------|-------|-------|----------|--|
| 3.9863E+09 | 63137.28 | 14.58 | 4.8   | 0.1753   |  |
| 9.2019E+08 | 30334.68 | 6.13  | 3.07  | 0.1160   |  |
| 8.5400E+08 | 29223.28 | 6.42  | 3.25  | 0.1133   |  |
| 2.5737E+08 | 16042.71 | 2.86  | 2.86  | 0.0835   |  |
| 1.9651E+09 | 44329.31 | 9.57  | 6.99  | 0.1464   |  |
| 2.3872E+09 | 48858.91 | 11.22 | 6.28  | 0.1408   |  |
| 7.5263E+09 | 86754.34 | 17.04 | 8.42  | 0.2014   |  |
| 4.1981E+09 | 64792.52 | 14.38 | 13.85 | 0.1462   |  |
| 8.9900E+08 | 29983.33 | 6.53  | 3.22  | 0.1119   |  |
| 1.4311E+09 | 37829.85 | 8.7   | 4.51  | 0.1231   |  |

| čtvrtletí | pořadí | hodnota     | čtvrtletí | pořadí | hodnota     | čtvrtletí | pořadí |
|-----------|--------|-------------|-----------|--------|-------------|-----------|--------|
| 1993Q1    | 1      | 5.57591E-06 | 1997Q4    | 20     | 2.11005E-06 | 2002Q3    | 39     |
| 1993Q2    | 2      | 5.55927E-06 | 1998Q1    | 21     | 2.02681E-06 | 2002Q4    | 40     |
| 1993Q3    | 3      | 5.43012E-06 | 1998Q2    | 22     | 1.95284E-06 | 2003Q1    | 41     |
| 1993Q4    | 4      | 4.88322E-06 | 1998Q3    | 23     | 1.89591E-06 | 2003Q2    | 42     |
| 1994Q1    | 5      | 4.64802E-06 | 1998Q4    | 24     | 1.81902E-06 | 2003Q3    | 43     |
| 1994Q2    | 6      | 4.54297E-06 | 1999Q1    | 25     | 1.78685E-06 | 2003Q4    | 44     |
| 1994Q3    | 7      | 4.44726E-06 | 1999Q2    | 26     | 1.80321E-06 | 2004Q1    | 45     |
| 1994Q4    | 8      | 4.09E-06    | 1999Q3    | 27     | 1.84363E-06 | 2004Q2    | 46     |
| 1995Q1    | 9      | 3.89085E-06 | 1999Q4    | 28     | 1.86243E-06 | 2004Q3    | 47     |
| 1995Q2    | 10     | 3.72784E-06 | 2000Q1    | 29     | 1.82423E-06 | 2004Q4    | 48     |
| 1995Q3    | 11     | 3.56242E-06 | 2000Q2    | 30     | 1.84028E-06 | 2005Q1    | 49     |
| 1995Q4    | 12     | 3.26545E-06 | 2000Q3    | 31     | 1.82589E-06 | 2005Q2    | 50     |
| 1996Q1    | 13     | 3.11673E-06 | 2000Q4    | 32     | 1.82099E-06 | 2005Q3    | 51     |
| 1996Q2    | 14     | 3.03403E-06 | 2001Q1    | 33     | 1.75821E-06 | 2005Q4    | 52     |
| 1996Q3    | 15     | 2.9752E-06  | 2001Q2    | 34     | 1.71469E-06 | 2006Q1    | 53     |
| 1996Q4    | 16     | 2.73504E-06 | 2001Q3    | 35     | 1.69585E-06 | 2006Q2    | 54     |
| 1997Q1    | 17     | 2.41057E-06 | 2001Q4    | 36     | 1.67793E-06 | 2006Q3    | 55     |
| 1997Q2    | 18     | 2.26663E-06 | 2002Q1    | 37     | 1.67634E-06 | 2006Q4    | 56     |
| 1997Q3    | 19     | 2.25403E-06 | 2002Q2    | 38     | 1.68306E-06 | 2007Q1    | 57     |
|           |        | 7.24156E-05 |           |        | 3.46182E-05 |           |        |

|          |    |              |             |
|----------|----|--------------|-------------|
| parametr | b= | 0.052242153  | 0.856105771 |
| parametr | a= | -0.187120416 | 7.07265E-06 |
| parametr | c= | 3.98808E-05  | 1.71236E-06 |

| hodnota     |
|-------------|
| 1.72216E-06 |
| 1.76262E-06 |
| 1.78348E-06 |
| 1.80594E-06 |
| 1.82332E-06 |
| 1.79203E-06 |
| 1.79391E-06 |
| 1.77409E-06 |
| 1.75692E-06 |
| 1.70194E-06 |
| 1.71048E-06 |
| 1.69638E-06 |
| 1.71777E-06 |
| 1.66895E-06 |
| 1.67474E-06 |
| 1.65345E-06 |
| 1.64939E-06 |
| 1.58569E-06 |
| 1.57035E-06 |
| 3.26436E-05 |

| hodnota  | hodnota  | hodnota  |
|----------|----------|----------|
| 179342.9 | 473921.5 | 580665.6 |
| 179879.6 | 493387.1 | 567335.8 |
| 184157.9 | 512073.8 | 560701.5 |
| 204782.7 | 527451.8 | 553728.3 |
| 215145.3 | 549745.5 | 548450.7 |
| 220120.4 | 559644.4 | 558026.2 |
| 224857.6 | 554565.3 | 557442.5 |
| 244498.9 | 542409.4 | 563668.2 |
| 257013.4 | 536933.7 | 569176.8 |
| 268251.6 | 548175   | 587564.8 |
| 280707.7 | 543395.4 | 584631.3 |
| 306236.9 | 547678.9 | 589489.7 |
| 320848.6 | 549152.9 | 582149.8 |
| 329595.1 | 568758.9 | 599177.5 |
| 336112.3 | 583195.2 | 597108   |
| 365625.2 | 589675.9 | 604796.4 |
| 414840.1 | 595970.9 | 606284.6 |
| 441183   | 596536.5 | 630641.9 |
| 443649.1 | 594155.3 | 636801.4 |
| 5416848  | 10466827 | 11077841 |

| čtvrtletí | pořadí | hodnota  | $t^2$ | $xt*yt$  |
|-----------|--------|----------|-------|----------|
| 1993Q1    | 1      | 12.09705 | 1     | 12.09705 |
| 1993Q2    | 2      | 12.10004 | 4     | 24.20009 |
| 1993Q3    | 3      | 12.12355 | 9     | 36.37065 |
| 1993Q4    | 4      | 12.2297  | 16    | 48.91882 |
| 1994Q1    | 5      | 12.27907 | 25    | 61.39534 |
| 1994Q2    | 6      | 12.30193 | 36    | 73.81158 |
| 1994Q3    | 7      | 12.32322 | 49    | 86.26256 |
| 1994Q4    | 8      | 12.40697 | 64    | 99.25573 |
| 1995Q1    | 9      | 12.45688 | 81    | 112.112  |
| 1995Q2    | 10     | 12.49968 | 100   | 124.9968 |
| 1995Q3    | 11     | 12.54507 | 121   | 137.9958 |
| 1995Q4    | 12     | 12.63211 | 144   | 151.5854 |
| 1996Q1    | 13     | 12.67872 | 169   | 164.8234 |
| 1996Q2    | 14     | 12.70562 | 196   | 177.8787 |
| 1996Q3    | 15     | 12.7252  | 225   | 190.878  |
| 1996Q4    | 16     | 12.80936 | 256   | 204.9498 |
| 1997Q1    | 17     | 12.93565 | 289   | 219.906  |
| 1997Q2    | 18     | 12.99722 | 324   | 233.9499 |
| 1997Q3    | 19     | 13.00279 | 361   | 247.053  |
| 1997Q4    | 20     | 13.0688  | 400   | 261.3759 |
| 1998Q1    | 21     | 13.10905 | 441   | 275.29   |
| 1998Q2    | 22     | 13.14622 | 484   | 289.2169 |
| 1998Q3    | 23     | 13.17581 | 529   | 303.0437 |
| 1998Q4    | 24     | 13.21721 | 576   | 317.2131 |
| 1999Q1    | 25     | 13.23506 | 625   | 330.8764 |
| 1999Q2    | 26     | 13.22594 | 676   | 343.8744 |
| 1999Q3    | 27     | 13.20378 | 729   | 356.502  |
| 1999Q4    | 28     | 13.19363 | 784   | 369.4216 |
| 2000Q1    | 29     | 13.21435 | 841   | 383.2161 |
| 2000Q2    | 30     | 13.20559 | 900   | 396.1678 |
| 2000Q3    | 31     | 13.21344 | 961   | 409.6168 |
| 2000Q4    | 32     | 13.21613 | 1024  | 422.9162 |
| 2001Q1    | 33     | 13.25121 | 1089  | 437.29   |
| 2001Q2    | 34     | 13.27628 | 1156  | 451.3934 |
| 2001Q3    | 35     | 13.28733 | 1225  | 465.0565 |
| 2001Q4    | 36     | 13.29795 | 1296  | 478.7261 |
| 2002Q1    | 37     | 13.2989  | 1369  | 492.0591 |
| 2002Q2    | 38     | 13.2949  | 1444  | 505.206  |
| 2002Q3    | 39     | 13.27193 | 1521  | 517.6053 |
| 2002Q4    | 40     | 13.24871 | 1600  | 529.9483 |
| 2003Q1    | 41     | 13.23694 | 1681  | 542.7147 |
| 2003Q2    | 42     | 13.22443 | 1764  | 555.426  |
| 2003Q3    | 43     | 13.21485 | 1849  | 568.2387 |

| skutečnost | vyrovnání | rezidua  |
|------------|-----------|----------|
| 179342.9   | 251841.7  | -72498.8 |
| 179879.6   | 256994.6  | -77115.0 |
| 184157.9   | 262252.8  | -78094.9 |
| 204782.7   | 267618.7  | -62836.0 |
| 215145.3   | 273094.4  | -57949.1 |
| 220120.4   | 278682.0  | -58561.6 |
| 224857.6   | 284384.1  | -59526.5 |
| 244498.9   | 290202.8  | -45703.9 |
| 257013.4   | 296140.5  | -39127.1 |
| 268251.6   | 302199.7  | -33948.1 |
| 280707.7   | 308382.9  | -27675.2 |
| 306236.9   | 314692.6  | -8455.7  |
| 320848.6   | 321131.5  | -282.9   |
| 329595.1   | 327702.0  | 1893.1   |
| 336112.3   | 334407.0  | 1705.3   |
| 365625.2   | 341249.2  | 24376.0  |
| 414840.1   | 348231.4  | 66608.7  |
| 441183     | 355356.5  | 85826.5  |
| 443649.1   | 362627.3  | 81021.8  |
| 473921.5   | 370046.9  | 103874.6 |
| 493387.1   | 377618.3  | 115768.8 |
| 512073.8   | 385344.6  | 126729.2 |
| 527451.8   | 393229.0  | 134222.8 |
| 549745.5   | 401274.7  | 148470.8 |
| 559644.4   | 409485.1  | 150159.3 |
| 554565.3   | 417863.4  | 136701.9 |
| 542409.4   | 426413.2  | 115996.2 |
| 536933.7   | 435137.9  | 101795.8 |
| 548175     | 444041.1  | 104133.9 |
| 543395.4   | 453126.5  | 90268.9  |
| 547678.9   | 462397.7  | 85281.2  |
| 549152.9   | 471858.7  | 77294.2  |
| 568758.9   | 481513.2  | 87245.7  |
| 583195.2   | 491365.3  | 91829.9  |
| 589675.9   | 501419.0  | 88256.9  |
| 595970.9   | 511678.4  | 84292.5  |
| 596536.5   | 522147.6  | 74388.9  |
| 594155.3   | 532831.1  | 61324.2  |
| 580665.6   | 543733.2  | 36932.4  |
| 567335.8   | 554858.3  | 12477.5  |
| 560701.5   | 566211.1  | -5509.6  |
| 553728.3   | 577796.2  | -24067.9 |
| 548450.7   | 589618.3  | -41167.6 |

|        |      |          |       |          |
|--------|------|----------|-------|----------|
| 2003Q4 | 44   | 13.23216 | 1936  | 582.2151 |
| 2004Q1 | 45   | 13.23111 | 2025  | 595.4002 |
| 2004Q2 | 46   | 13.24222 | 2116  | 609.1422 |
| 2004Q3 | 47   | 13.25195 | 2209  | 622.8415 |
| 2004Q4 | 48   | 13.28374 | 2304  | 637.6196 |
| 2005Q1 | 49   | 13.27874 | 2401  | 650.6581 |
| 2005Q2 | 50   | 13.28701 | 2500  | 664.3506 |
| 2005Q3 | 51   | 13.27448 | 2601  | 676.9986 |
| 2005Q4 | 52   | 13.30331 | 2704  | 691.7723 |
| 2006Q1 | 53   | 13.29985 | 2809  | 704.8922 |
| 2006Q2 | 54   | 13.31265 | 2916  | 718.8829 |
| 2006Q3 | 55   | 13.3151  | 3025  | 732.3308 |
| 2006Q4 | 56   | 13.35449 | 3136  | 747.8516 |
| 2007Q1 | 57   | 13.36421 | 3249  | 761.7601 |
| 2007Q2 | 58   |          | 3364  | 0        |
| 2007Q3 | 59   |          | 3481  | 0        |
| 2007Q4 | 60   |          | 3600  | 0        |
| sumace | 1653 | 741.2093 | 63365 | 21807.55 |

|            |          |             |
|------------|----------|-------------|
| 558026.2   | 601682.2 | -43656.0    |
| 557442.5   | 613993.1 | -56550.6    |
| 563668.2   | 626555.8 | -62887.6    |
| 569176.8   | 639375.5 | -70198.7    |
| 587564.8   | 652457.6 | -64892.8    |
| 584631.3   | 665807.3 | -81176.0    |
| 589489.7   | 679430.1 | -89940.4    |
| 582149.8   | 693331.7 | -111181.9   |
| 599177.5   | 707517.7 | -108340.2   |
| 597108     | 721994.0 | -124886.0   |
| 604796.4   | 736766.5 | -131970.1   |
| 606284.6   | 751841.2 | -145556.6   |
| 630641.9   | 767224.4 | -136582.5   |
| 636801.4   | 782922.3 | -146120.9   |
|            | 798941.4 |             |
|            | 815288.3 |             |
|            | 831969.7 |             |
| 26961516.7 | 26739100 | 222416.7047 |

|           |      |       |
|-----------|------|-------|
| $X^T X =$ | 57   | 1653  |
|           | 1653 | 63365 |

|           |         |
|-----------|---------|
| THEILovoU | 0.20138 |
|-----------|---------|

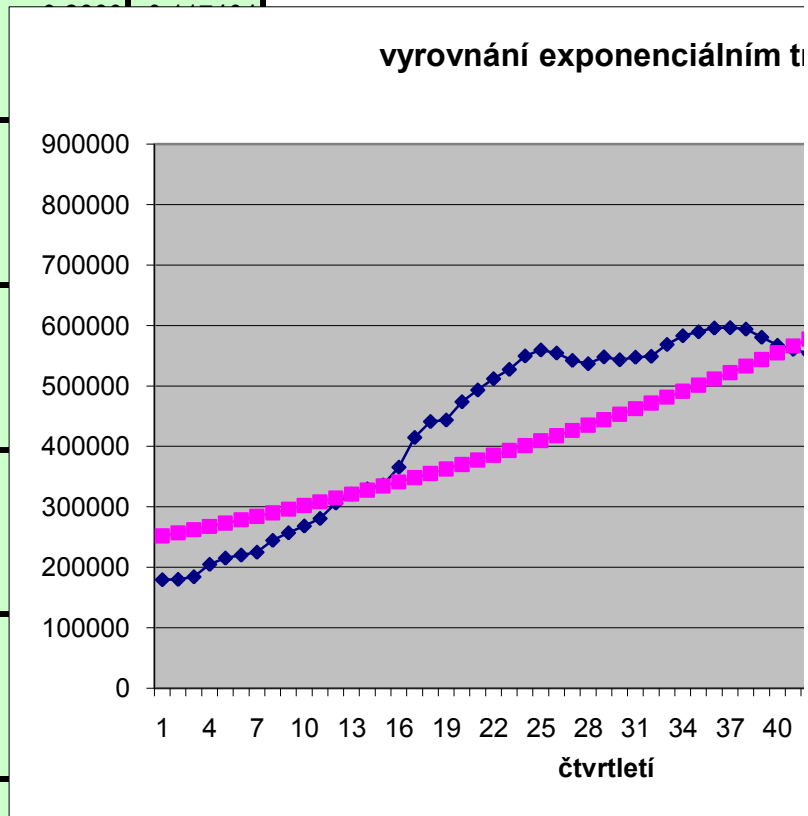
|               |        |
|---------------|--------|
| $\det(X^T X)$ | 879396 |
|---------------|--------|

|                |          |          |
|----------------|----------|----------|
| $(X^T X)^{-1}$ | 0.072055 | -0.00188 |
|                | -0.00188 | 6.48E-05 |

|           |          |
|-----------|----------|
| $X^T y =$ | 741.2093 |
|           | 21807.55 |

|    |          |
|----|----------|
| b1 | 12.4163  |
| b2 | 0.020254 |

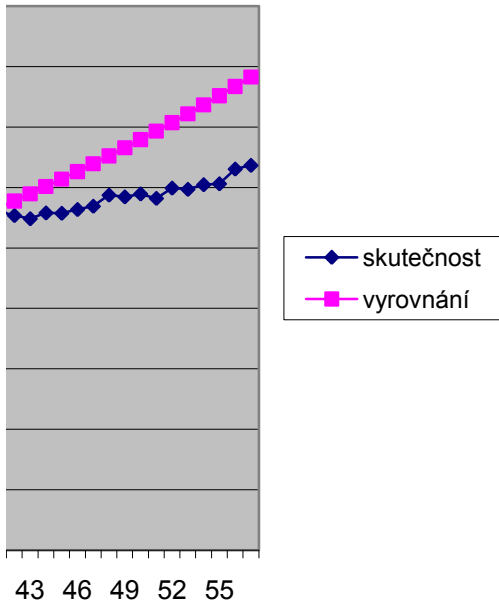
| abs.rezidua | rezidua^2  | APE    | MAPE     |
|-------------|------------|--------|----------|
| 72498.80    | 5256076246 | 0.4042 | 0.168139 |
| 77114.95    | 5946715532 | 0.4287 | 0.176515 |
| 78094.93    | 6098817975 | 0.4241 | 0.17494  |
| 62836.00    | 3948362428 | 0.3068 | 0.133014 |
| 57949.05    | 3358092685 | 0.2693 | 0.11869  |
| 58561.64    | 3429466180 |        |          |
| 59526.46    | 3543399909 |        |          |
| 45703.85    | 2088841970 |        |          |
| 39127.09    | 1530929303 |        |          |
| 33948.12    | 1152475039 |        |          |
| 27675.23    | 765918342  |        |          |
| 8455.75     | 71499695.4 |        |          |
| 282.87      | 80015.3244 |        |          |
| 1893.07     | 3583703.06 |        |          |
| 1705.27     | 2907931.87 |        |          |
| 24375.98    | 594188204  |        |          |
| 66608.69    | 4436717618 |        |          |
| 85826.54    | 7366195724 |        |          |
| 81021.82    | 6564534566 |        |          |
| 103874.62   | 1.079E+10  |        |          |
| 115768.82   | 1.3402E+10 |        |          |
| 126729.19   | 1.606E+10  |        |          |
| 134222.79   | 1.8016E+10 |        |          |
| 148470.76   | 2.2044E+10 |        |          |
| 150159.31   | 2.2548E+10 |        |          |
| 136701.88   | 1.8687E+10 | 0.2465 | 0.140578 |
| 115996.21   | 1.3455E+10 | 0.2139 | 0.119729 |
| 101795.82   | 1.0362E+10 | 0.1896 | 0.10472  |
| 104133.91   | 1.0844E+10 | 0.1900 | 0.104951 |
| 90268.93    | 8148480006 | 0.1661 | 0.090584 |
| 85281.16    | 7272876789 | 0.1557 | 0.08443  |
| 77294.20    | 5974393113 | 0.1408 | 0.075704 |
| 87245.66    | 7611804509 | 0.1534 | 0.08307  |
| 91829.88    | 8432726019 | 0.1575 | 0.085458 |
| 88256.91    | 7789282979 | 0.1497 | 0.080888 |
| 84292.55    | 7105233859 | 0.1414 | 0.0761   |
| 74388.87    | 5533704047 | 0.1247 | 0.066497 |
| 61324.18    | 3760655452 | 0.1032 | 0.054414 |
| 36932.40    | 1364002526 | 0.0636 | 0.032846 |
| 12477.46    | 155687073  | 0.0220 | 0.011119 |
| 5509.61     | 30355773.4 | 0.0098 | 0.004889 |
| 24067.86    | 579262009  | 0.0435 | 0.02127  |
| 41167.56    | 1694767643 | 0.0751 | 0.036173 |



|            |            |        |          |
|------------|------------|--------|----------|
| 43656.04   | 1905849542 | 0.0782 | 0.037644 |
| 56550.55   | 3197965246 | 0.1014 | 0.048275 |
| 62887.56   | 3954845248 | 0.1116 | 0.052837 |
| 70198.71   | 4927858498 | 0.1233 | 0.058085 |
| 64892.75   | 4211069606 | 0.1104 | 0.052332 |
| 81175.97   | 6589538013 | 0.1388 | 0.064918 |
| 89940.43   | 8089280633 | 0.1526 | 0.07088  |
| 111181.92  | 1.2361E+10 | 0.1910 | 0.087169 |
| 108340.25  | 1.1738E+10 | 0.1808 | 0.082912 |
| 124886.03  | 1.5597E+10 | 0.2092 | 0.094675 |
| 131970.11  | 1.7416E+10 | 0.2182 | 0.09837  |
| 145556.64  | 2.1187E+10 | 0.2401 | 0.107175 |
| 136582.51  | 1.8655E+10 | 0.2166 | 0.097708 |
| 146120.93  | 2.1351E+10 | 0.2295 | 0.102922 |
| 0.00       | 0          |        |          |
| 0.00       | 0          |        |          |
| 0.00       | 0          |        |          |
| 4.3553E+06 | 4.2900E+11 | 0.1704 | 0.0842   |



# rendem



| čtvrtletí | pořadí | skutečnost | vyrovnání | rezidua  | abs.rezidua | rezidua^2   |
|-----------|--------|------------|-----------|----------|-------------|-------------|
| 1993Q1    | 1      | 179342.9   | 128744.9  | 50598.0  | 50597.98    | 2560155100  |
| 1993Q2    | 2      | 179879.6   | 145011.1  | 34868.5  | 34868.55    | 1215815564  |
| 1993Q3    | 3      | 184157.9   | 162598.3  | 21559.6  | 21559.62    | 464817055   |
| 1993Q4    | 4      | 204782.7   | 181436.9  | 23345.8  | 23345.78    | 545025490.8 |
| 1994Q1    | 5      | 215145.3   | 201414.9  | 13730.4  | 13730.35    | 188522615.6 |
| 1994Q2    | 6      | 220120.4   | 222377.6  | -2257.2  | 2257.15     | 5094744.587 |
| 1994Q3    | 7      | 224857.6   | 244129.7  | -19272.1 | 19272.08    | 371412884.9 |
| 1994Q4    | 8      | 244498.9   | 266441.8  | -21942.9 | 21942.87    | 481489675.7 |
| 1995Q1    | 9      | 257013.4   | 289058.7  | -32045.3 | 32045.28    | 1026900178  |
| 1995Q2    | 10     | 268251.6   | 311710.9  | -43459.3 | 43459.28    | 1888709114  |
| 1995Q3    | 11     | 280707.7   | 334127.2  | -53419.5 | 53419.46    | 2853638757  |
| 1995Q4    | 12     | 306236.9   | 356047.5  | -49810.6 | 49810.58    | 2481094028  |
| 1996Q1    | 13     | 320848.6   | 377234.7  | -56386.1 | 56386.11    | 3179393690  |
| 1996Q2    | 14     | 329595.1   | 397484.2  | -67889.1 | 67889.08    | 4608926862  |
| 1996Q3    | 15     | 336112.3   | 416630.3  | -80518.0 | 80517.97    | 6483143495  |
| 1996Q4    | 16     | 365625.2   | 434549.8  | -68924.6 | 68924.63    | 4750604452  |
| 1997Q1    | 17     | 414840.1   | 451162.4  | -36322.3 | 36322.30    | 1319309356  |
| 1997Q2    | 18     | 441183     | 466427.8  | -25244.8 | 25244.83    | 637301476.7 |
| 1997Q3    | 19     | 443649.1   | 480341.9  | -36692.8 | 36692.80    | 1346361441  |
| 1997Q4    | 20     | 473921.5   | 492930.7  | -19009.2 | 19009.16    | 361348041   |
| 1998Q1    | 21     | 493387.1   | 504244.3  | -10857.2 | 10857.16    | 117877852.2 |
| 1998Q2    | 22     | 512073.8   | 514350.8  | -2277.0  | 2276.98     | 5184641.807 |
| 1998Q3    | 23     | 527451.8   | 523330.5  | 4121.3   | 4121.27     | 16984840.84 |
| 1998Q4    | 24     | 549745.5   | 531271.0  | 18474.5  | 18474.45    | 341305472.9 |
| 1999Q1    | 25     | 559644.4   | 538262.9  | 21381.5  | 21381.47    | 457167195.1 |
| 1999Q2    | 26     | 554565.3   | 544396.6  | 10168.7  | 10168.69    | 103402248.8 |
| 1999Q3    | 27     | 542409.4   | 549759.8  | -7350.4  | 7350.45     | 54029079.23 |
| 1999Q4    | 28     | 536933.7   | 554436.0  | -17502.3 | 17502.32    | 306331180.3 |
| 2000Q1    | 29     | 548175     | 558503.0  | -10328.0 | 10327.98    | 106667244.1 |
| 2000Q2    | 30     | 543395.4   | 562032.4  | -18637.0 | 18637.04    | 347339229.2 |
| 2000Q3    | 31     | 547678.9   | 565089.7  | -17410.8 | 17410.76    | 303134614.2 |
| 2000Q4    | 32     | 549152.9   | 567733.5  | -18580.6 | 18580.62    | 345239297.8 |
| 2001Q1    | 33     | 568758.9   | 570016.7  | -1257.8  | 1257.77     | 1581985.881 |
| 2001Q2    | 34     | 583195.2   | 571985.9  | 11209.3  | 11209.27    | 125647690   |
| 2001Q3    | 35     | 589675.9   | 573682.7  | 15993.2  | 15993.23    | 255783374.7 |
| 2001Q4    | 36     | 595970.9   | 575143.3  | 20827.6  | 20827.62    | 433789868.4 |
| 2002Q1    | 37     | 596536.5   | 576399.6  | 20136.9  | 20136.87    | 405493420.1 |
| 2002Q2    | 38     | 594155.3   | 577479.6  | 16675.7  | 16675.72    | 278079799.6 |
| 2002Q3    | 39     | 580665.6   | 578407.3  | 2258.3   | 2258.26     | 5099736.61  |
| 2002Q4    | 40     | 567335.8   | 579204.0  | -11868.2 | 11868.18    | 140853631.4 |
| 2003Q1    | 41     | 560701.5   | 579887.7  | -19186.2 | 19186.23    | 368111354.2 |
| 2003Q2    | 42     | 553728.3   | 580474.4  | -26746.1 | 26746.08    | 715352544.7 |
| 2003Q3    | 43     | 548450.7   | 580977.6  | -32526.9 | 32526.85    | 1057996045  |

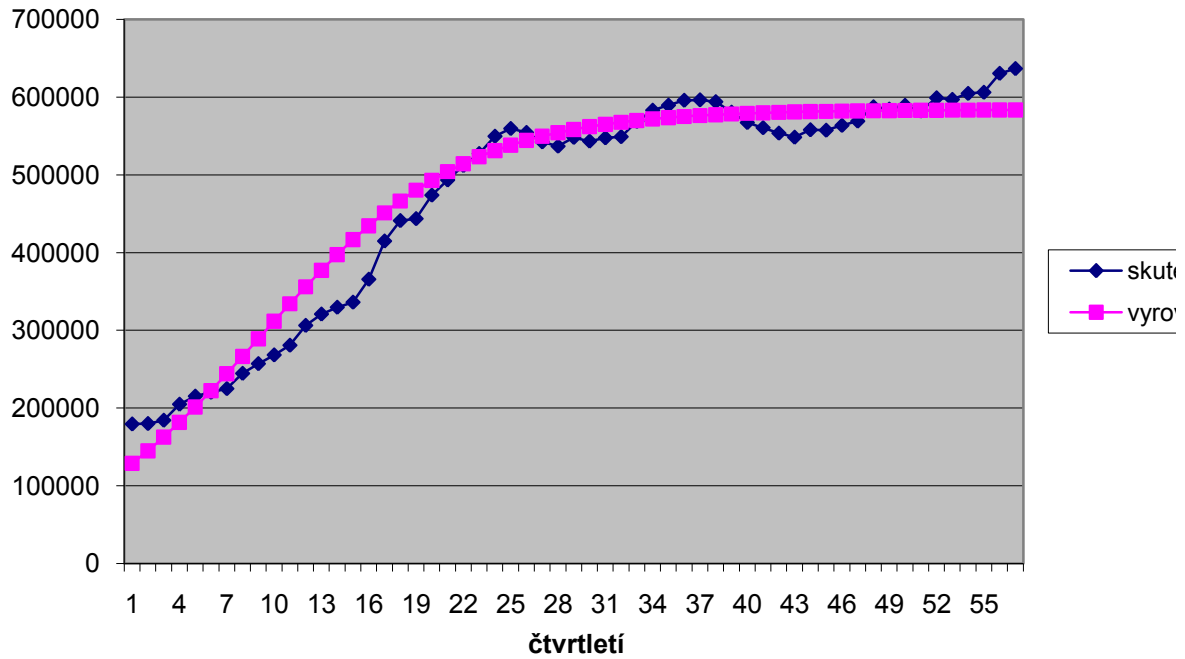
|        |    |            |             |             |            |             |
|--------|----|------------|-------------|-------------|------------|-------------|
| 2003Q4 | 44 | 558026.2   | 581409.0    | -23382.8    | 23382.82   | 546756105.6 |
| 2004Q1 | 45 | 557442.5   | 581778.9    | -24336.4    | 24336.41   | 592260652.5 |
| 2004Q2 | 46 | 563668.2   | 582095.9    | -18427.7    | 18427.74   | 339581768.5 |
| 2004Q3 | 47 | 569176.8   | 582367.6    | -13190.8    | 13190.84   | 173998201.6 |
| 2004Q4 | 48 | 587564.8   | 582600.4    | 4964.4      | 4964.36    | 24644894.57 |
| 2005Q1 | 49 | 584631.3   | 582799.9    | 1831.4      | 1831.41    | 3354074.72  |
| 2005Q2 | 50 | 589489.7   | 582970.7    | 6519.0      | 6518.96    | 42496777.18 |
| 2005Q3 | 51 | 582149.8   | 583117.1    | -967.3      | 967.30     | 935663.4663 |
| 2005Q4 | 52 | 599177.5   | 583242.4    | 15935.1     | 15935.05   | 253925870.9 |
| 2006Q1 | 53 | 597108     | 583349.8    | 13758.2     | 13758.19   | 189287923.8 |
| 2006Q2 | 54 | 604796.4   | 583441.7    | 21354.7     | 21354.65   | 456021271.3 |
| 2006Q3 | 55 | 606284.6   | 583520.5    | 22764.1     | 22764.12   | 518205203.5 |
| 2006Q4 | 56 | 630641.9   | 583587.9    | 47054.0     | 47054.00   | 2214078897  |
| 2007Q1 | 57 | 636801.4   | 583645.6    | 53155.8     | 53155.77   | 2825535648  |
| 2007Q2 | 58 |            | 583695.1    |             | 0.00       | 0           |
| 2007Q3 | 59 |            | 583737.4    |             | 0.00       | 0           |
| 2007Q4 | 60 |            | 583773.6    |             | 0.00       | 0           |
|        |    | 26961516.7 | 27376858.15 | -415341.445 | 1.3607E+06 | 5.1243E+10  |

|          |    |      |             |
|----------|----|------|-------------|
| parametr | b= | beta | 0.85610577  |
| parametr | a= | alfa | 7.07265E-06 |
| parametr | c= | gama | 1.71236E-06 |

|           |         |
|-----------|---------|
| THEILovoU | 0.11190 |
|-----------|---------|

| APE    | MAPE     |
|--------|----------|
| 0.2821 | 0.164232 |
| 0.1938 | 0.107324 |
| 0.1171 | 0.062175 |
| 0.1140 | 0.060447 |
| 0.0638 | 0.032961 |
| 0.0103 | 0.005101 |

vyrovnání logistickým trendem



|        |          |
|--------|----------|
| 0.0136 | 0.00673  |
| 0.0326 | 0.016037 |
| 0.0188 | 0.009332 |
| 0.0343 | 0.01686  |
| 0.0318 | 0.015646 |
| 0.0338 | 0.016636 |
| 0.0022 | 0.001104 |
| 0.0192 | 0.009703 |
| 0.0271 | 0.013747 |
| 0.0349 | 0.017784 |
| 0.0338 | 0.017168 |
| 0.0281 | 0.014233 |
| 0.0039 | 0.001948 |
| 0.0209 | 0.010351 |
| 0.0342 | 0.016821 |
| 0.0483 | 0.023581 |
| 0.0593 | 0.028799 |

|        |          |
|--------|----------|
| 0.0419 | 0.020521 |
| 0.0437 | 0.021362 |
| 0.0327 | 0.016083 |
| 0.0232 | 0.011455 |
| 0.0084 | 0.004242 |
| 0.0031 | 0.001569 |
| 0.0111 | 0.00556  |
| 0.0017 | 0.00083  |
| 0.0266 | 0.013477 |
| 0.0230 | 0.011655 |
| 0.0353 | 0.017972 |
| 0.0375 | 0.019133 |
| 0.0746 | 0.038752 |
| 0.0835 | 0.043554 |
| 0.0653 | 0.0322   |

ečnost  
vnání

| čtvrtletí | pořadí | skutečnost | vyrovnání | rezidua   | abs.rezidua | rezidua^2  | APE    |
|-----------|--------|------------|-----------|-----------|-------------|------------|--------|
| 1993Q1    | 1      | 179342.9   | -100128.8 | 279471.7  | 279471.70   | 7.8104E+10 | 1.5583 |
| 1993Q2    | 2      | 179879.6   | -27791.3  | 207670.9  | 207670.86   | 4.3127E+10 | 1.1545 |
| 1993Q3    | 3      | 184157.9   | 36936.2   | 147221.7  | 147221.74   | 2.1674E+10 | 0.7994 |
| 1993Q4    | 4      | 204782.7   | 94854.1   | 109928.6  | 109928.65   | 1.2084E+10 | 0.5368 |
| 1994Q1    | 5      | 215145.3   | 146678.8  | 68466.5   | 68466.49    | 4687659763 | 0.3182 |
| 1994Q2    | 6      | 220120.4   | 193051.5  | 27068.9   | 27068.95    | 732727896  | 0.1230 |
| 1994Q3    | 7      | 224857.6   | 234545.6  | -9688.0   | 9687.95     | 93856404.2 |        |
| 1994Q4    | 8      | 244498.9   | 271674.3  | -27175.4  | 27175.45    | 738504888  |        |
| 1995Q1    | 9      | 257013.4   | 304897.1  | -47883.7  | 47883.68    | 2292846879 |        |
| 1995Q2    | 10     | 268251.6   | 334624.7  | -66373.1  | 66373.08    | 4405386241 | 7000   |
| 1995Q3    | 11     | 280707.7   | 361224.9  | -80517.2  | 80517.15    | 6483012037 | 6000   |
| 1995Q4    | 12     | 306236.9   | 385026.6  | -78789.7  | 78789.71    | 6207817767 |        |
| 1996Q1    | 13     | 320848.6   | 406324.3  | -85475.7  | 85475.74    | 7306102559 | 5000   |
| 1996Q2    | 14     | 329595.1   | 425381.5  | -95786.4  | 95786.39    | 9175033138 |        |
| 1996Q3    | 15     | 336112.3   | 442433.8  | -106321.5 | 106321.47   | 1.1304E+10 | 4000   |
| 1996Q4    | 16     | 365625.2   | 457692.1  | -92066.9  | 92066.90    | 8476314959 | 3000   |
| 1997Q1    | 17     | 414840.1   | 471345.2  | -56505.1  | 56505.11    | 3192827780 |        |
| 1997Q2    | 18     | 441183     | 483562.0  | -42379.0  | 42378.97    | 1795977354 | 2000   |
| 1997Q3    | 19     | 443649.1   | 494493.5  | -50844.4  | 50844.39    | 2585152334 |        |
| 1997Q4    | 20     | 473921.5   | 504275.0  | -30353.5  | 30353.48    | 921334047  | 1000   |
| 1998Q1    | 21     | 493387.1   | 513027.4  | -19640.3  | 19640.33    | 385742730  |        |
| 1998Q2    | 22     | 512073.8   | 520859.1  | -8785.3   | 8785.30     | 77181490.3 |        |
| 1998Q3    | 23     | 527451.8   | 527866.9  | -415.1    | 415.05      | 172266.817 | -1000  |
| 1998Q4    | 24     | 549745.5   | 534137.4  | 15608.1   | 15608.14    | 243613888  | -2000  |
| 1999Q1    | 25     | 559644.4   | 539748.2  | 19896.2   | 19896.20    | 395858691  |        |
| 1999Q2    | 26     | 554565.3   | 544768.8  | 9796.5    | 9796.54     | 95972145.9 |        |
| 1999Q3    | 27     | 542409.4   | 549261.1  | -6851.7   | 6851.74     | 46946409.5 | 0.0126 |
| 1999Q4    | 28     | 536933.7   | 553280.9  | -16347.2  | 16347.22    | 267231449  | 0.0304 |
| 2000Q1    | 29     | 548175     | 556877.8  | -8702.8   | 8702.79     | 75738619.4 | 0.0159 |
| 2000Q2    | 30     | 543395.4   | 560096.3  | -16700.9  | 16700.87    | 278919052  | 0.0307 |
| 2000Q3    | 31     | 547678.9   | 562976.2  | -15297.3  | 15297.25    | 234005934  | 0.0279 |
| 2000Q4    | 32     | 549152.9   | 565553.1  | -16400.2  | 16400.16    | 268965343  | 0.0299 |
| 2001Q1    | 33     | 568758.9   | 567858.9  | 900.0     | 900.03      | 810045.718 | 0.0016 |
| 2001Q2    | 34     | 583195.2   | 569922.1  | 13273.1   | 13273.09    | 176174972  | 0.0228 |
| 2001Q3    | 35     | 589675.9   | 571768.3  | 17907.6   | 17907.62    | 320682745  | 0.0304 |
| 2001Q4    | 36     | 595970.9   | 573420.2  | 22550.7   | 22550.67    | 508532495  | 0.0378 |
| 2002Q1    | 37     | 596536.5   | 574898.4  | 21638.1   | 21638.10    | 468207522  | 0.0363 |
| 2002Q2    | 38     | 594155.3   | 576221.1  | 17934.2   | 17934.25    | 321637284  | 0.0302 |
| 2002Q3    | 39     | 580665.6   | 577404.6  | 3261.0    | 3261.04     | 10634392.2 | 0.0056 |
| 2002Q4    | 40     | 567335.8   | 578463.6  | -11127.8  | 11127.76    | 123826981  | 0.0196 |
| 2003Q1    | 41     | 560701.5   | 579411.1  | -18709.6  | 18709.65    | 350050861  | 0.0334 |
| 2003Q2    | 42     | 553728.3   | 580259.0  | -26530.7  | 26530.75    | 703880481  | 0.0479 |
| 2003Q3    | 43     | 548450.7   | 581017.7  | -32567.0  | 32567.04    | 1060612362 | 0.0594 |

|        |    |            |             |          |            |            |        |
|--------|----|------------|-------------|----------|------------|------------|--------|
| 2003Q4 | 44 | 558026.2   | 581696.6    | -23670.4 | 23670.42   | 560289017  | 0.0424 |
| 2004Q1 | 45 | 557442.5   | 582304.1    | -24861.6 | 24861.59   | 618098433  | 0.0446 |
| 2004Q2 | 46 | 563668.2   | 582847.6    | -19179.4 | 19179.44   | 367850894  | 0.0340 |
| 2004Q3 | 47 | 569176.8   | 583334.0    | -14157.2 | 14157.21   | 200426587  | 0.0249 |
| 2004Q4 | 48 | 587564.8   | 583769.2    | 3795.6   | 3795.59    | 14406484.7 | 0.0065 |
| 2005Q1 | 49 | 584631.3   | 584158.6    | 472.7    | 472.67     | 223416.375 | 0.0008 |
| 2005Q2 | 50 | 589489.7   | 584507.1    | 4982.6   | 4982.62    | 24826494.6 | 0.0085 |
| 2005Q3 | 51 | 582149.8   | 584818.9    | -2669.1  | 2669.07    | 7123950.16 | 0.0046 |
| 2005Q4 | 52 | 599177.5   | 585097.9    | 14079.6  | 14079.64   | 198236161  | 0.0235 |
| 2006Q1 | 53 | 597108     | 585347.5    | 11760.5  | 11760.50   | 138309275  | 0.0197 |
| 2006Q2 | 54 | 604796.4   | 585570.9    | 19225.5  | 19225.52   | 369620590  | 0.0318 |
| 2006Q3 | 55 | 606284.6   | 585770.8    | 20513.8  | 20513.84   | 420817715  | 0.0338 |
| 2006Q4 | 56 | 630641.9   | 585949.6    | 44692.3  | 44692.29   | 1997401010 | 0.0709 |
| 2007Q1 | 57 | 636801.4   | 586109.6    | 50691.8  | 50691.76   | 2569654379 | 0.0796 |
| 2007Q2 | 58 |            | 586252.8    |          | 0.00       | 0          |        |
| 2007Q3 | 59 |            | 586381.0    |          | 0.00       | 0          |        |
| 2007Q4 | 60 |            | 586495.6    |          | 0.00       | 0          |        |
|        |    | 26961516.7 | 26961481.39 | 35.308   | 2.3056E+06 | 2.3929E+11 | 0.1438 |

|          |     |      |          |
|----------|-----|------|----------|
| parametr | b = | beta | 0.894797 |
| parametr | a = | alfa | -768442  |
| parametr | c = | gama | 587470.8 |

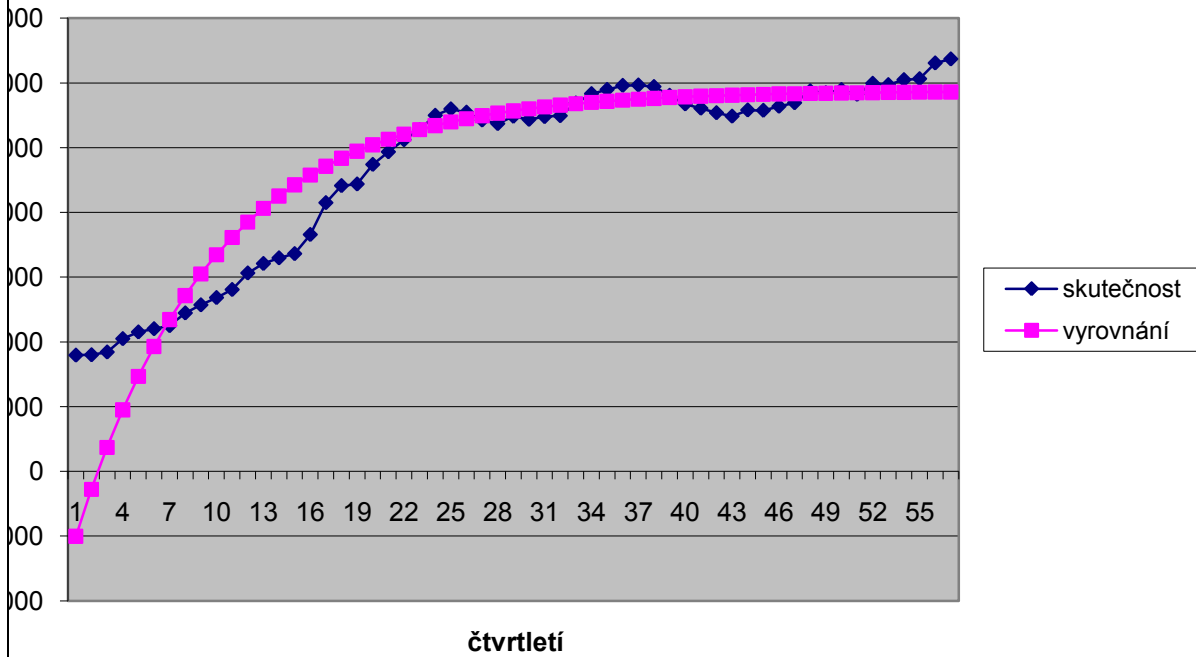
|           |         |
|-----------|---------|
| THEILovoU | 0.14621 |
|-----------|---------|



**AMAPE**

3.528055  
1.365462  
0.665878  
0.366873  
0.189226  
0.065515

**vyrovnání modif.expon. trendem**



0.006276  
0.014994  
0.007875  
0.015135  
0.013773  
0.014713  
0.000792  
0.011511  
0.015418  
0.019284  
0.018471  
0.015323  
0.002816  
0.009712  
0.01641  
0.023396  
0.028834

|          |
|----------|
| 0.020769 |
| 0.021813 |
| 0.016728 |
| 0.012284 |
| 0.00324  |
| 0.000404 |
| 0.004244 |
| 0.002287 |
| 0.011889 |
| 0.009946 |
| 0.016151 |
| 0.017209 |
| 0.036736 |
| 0.041452 |
| 0.1385   |

| čtvrtletí | pořadí | hodnota   | čtvrtletí | pořadí | hodnota  | čtvrtletí | pořadí |
|-----------|--------|-----------|-----------|--------|----------|-----------|--------|
| 1993Q1    | 1      | 179342.9  | 1997Q4    | 20     | 473921.5 | 2002Q3    | 39     |
| 1993Q2    | 2      | 179879.6  | 1998Q1    | 21     | 493387.1 | 2002Q4    | 40     |
| 1993Q3    | 3      | 184157.9  | 1998Q2    | 22     | 512073.8 | 2003Q1    | 41     |
| 1993Q4    | 4      | 204782.7  | 1998Q3    | 23     | 527451.8 | 2003Q2    | 42     |
| 1994Q1    | 5      | 215145.3  | 1998Q4    | 24     | 549745.5 | 2003Q3    | 43     |
| 1994Q2    | 6      | 220120.4  | 1999Q1    | 25     | 559644.4 | 2003Q4    | 44     |
| 1994Q3    | 7      | 224857.6  | 1999Q2    | 26     | 554565.3 | 2004Q1    | 45     |
| 1994Q4    | 8      | 244498.9  | 1999Q3    | 27     | 542409.4 | 2004Q2    | 46     |
| 1995Q1    | 9      | 257013.4  | 1999Q4    | 28     | 536933.7 | 2004Q3    | 47     |
| 1995Q2    | 10     | 268251.6  | 2000Q1    | 29     | 548175   | 2004Q4    | 48     |
| 1995Q3    | 11     | 280707.7  | 2000Q2    | 30     | 543395.4 | 2005Q1    | 49     |
| 1995Q4    | 12     | 306236.9  | 2000Q3    | 31     | 547678.9 | 2005Q2    | 50     |
| 1996Q1    | 13     | 320848.6  | 2000Q4    | 32     | 549152.9 | 2005Q3    | 51     |
| 1996Q2    | 14     | 329595.1  | 2001Q1    | 33     | 568758.9 | 2005Q4    | 52     |
| 1996Q3    | 15     | 336112.3  | 2001Q2    | 34     | 583195.2 | 2006Q1    | 53     |
| 1996Q4    | 16     | 365625.2  | 2001Q3    | 35     | 589675.9 | 2006Q2    | 54     |
| 1997Q1    | 17     | 414840.1  | 2001Q4    | 36     | 595970.9 | 2006Q3    | 55     |
| 1997Q2    | 18     | 441183    | 2002Q1    | 37     | 596536.5 | 2006Q4    | 56     |
| 1997Q3    | 19     | 443649.1  | 2002Q2    | 38     | 594155.3 | 2007Q1    | 57     |
|           |        | 5416848.3 |           |        | 10466827 |           |        |

|          |    |              |          |
|----------|----|--------------|----------|
| parametr | b= | 0.120993293  | 0.894797 |
| parametr | a= | -0.152167363 | -768442  |
| parametr | c= | -5745097.345 | 587470.8 |

| hodnota |
|---------|
|---------|

|          |
|----------|
| 580665.6 |
|----------|

|          |
|----------|
| 567335.8 |
|----------|

|          |
|----------|
| 560701.5 |
|----------|

|          |
|----------|
| 553728.3 |
|----------|

|          |
|----------|
| 548450.7 |
|----------|

|          |
|----------|
| 558026.2 |
|----------|

|          |
|----------|
| 557442.5 |
|----------|

|          |
|----------|
| 563668.2 |
|----------|

|          |
|----------|
| 569176.8 |
|----------|

|          |
|----------|
| 587564.8 |
|----------|

|          |
|----------|
| 584631.3 |
|----------|

|          |
|----------|
| 589489.7 |
|----------|

|          |
|----------|
| 582149.8 |
|----------|

|          |
|----------|
| 599177.5 |
|----------|

|        |
|--------|
| 597108 |
|--------|

|          |
|----------|
| 604796.4 |
|----------|

|          |
|----------|
| 606284.6 |
|----------|

|          |
|----------|
| 630641.9 |
|----------|

|          |
|----------|
| 636801.4 |
|----------|

|          |
|----------|
| 11077841 |
|----------|

| čtvrtletí | pořadí | skutečnost | vyrovnání | rezidua  | abs.rezidua | rezidua <sup>2</sup> |
|-----------|--------|------------|-----------|----------|-------------|----------------------|
| 1993Q1    | 1      | 179342.9   | 84034.9   | 95308.0  | 95308.0251  | 9083619654           |
| 1993Q2    | 2      | 179879.6   | 106706.3  | 73173.3  | 73173.2775  | 5354328543           |
| 1993Q3    | 3      | 184157.9   | 131570.5  | 52587.4  | 52587.3879  | 2765433367           |
| 1993Q4    | 4      | 204782.7   | 158101.1  | 46681.6  | 46681.5781  | 2179169736           |
| 1994Q1    | 5      | 215145.3   | 185736.1  | 29409.2  | 29409.2138  | 864901856.4          |
| 1994Q2    | 6      | 220120.4   | 213919.4  | 6201.0   | 6201.0133   | 38452565.99          |
| 1994Q3    | 7      | 224857.6   | 242133.9  | -17276.3 | 17276.2526  | 298468905            |
| 1994Q4    | 8      | 244498.9   | 269923.7  | -25424.8 | 25424.8493  | 646422959.6          |
| 1995Q1    | 9      | 257013.4   | 296907.6  | -39894.2 | 39894.2217  | 1591548923           |
| 1995Q2    | 10     | 268251.6   | 322782.9  | -54531.3 | 54531.2857  | 2973661122           |
| 1995Q3    | 11     | 280707.7   | 347324.1  | -66616.4 | 66616.406   | 4437745547           |
| 1995Q4    | 12     | 306236.9   | 370376.9  | -64140.0 | 64140.0323  | 4113943743           |
| 1996Q1    | 13     | 320848.6   | 391849.4  | -71000.8 | 71000.8427  | 5041119666           |
| 1996Q2    | 14     | 329595.1   | 411702.3  | -82107.2 | 82107.198   | 6741591970           |
| 1996Q3    | 15     | 336112.3   | 429938.7  | -93826.4 | 93826.4435  | 8803401500           |
| 1996Q4    | 16     | 365625.2   | 446595.2  | -80970.0 | 80969.9552  | 6556133647           |
| 1997Q1    | 17     | 414840.1   | 461732.5  | -46892.4 | 46892.449   | 2198901777           |
| 1997Q2    | 18     | 441183     | 475429.3  | -34246.3 | 34246.2559  | 1172806045           |
| 1997Q3    | 19     | 443649.1   | 487774.8  | -44125.7 | 44125.7155  | 1947078766           |
| 1997Q4    | 20     | 473921.5   | 498865.0  | -24943.5 | 24943.5406  | 622180218.3          |
| 1998Q1    | 21     | 493387.1   | 508798.1  | -15411.0 | 15411.0466  | 237500358.4          |
| 1998Q2    | 22     | 512073.8   | 517671.8  | -5598.0  | 5598.00931  | 31337708.28          |
| 1998Q3    | 23     | 527451.8   | 525581.0  | 1870.8   | 1870.79202  | 3499862.793          |
| 1998Q4    | 24     | 549745.5   | 532616.5  | 17129.0  | 17128.9862  | 293402168.6          |
| 1999Q1    | 25     | 559644.4   | 538863.9  | 20780.5  | 20780.5045  | 431829365.2          |
| 1999Q2    | 26     | 554565.3   | 544402.9  | 10162.4  | 10162.3691  | 103273745.7          |
| 1999Q3    | 27     | 542409.4   | 549307.3  | -6897.9  | 6897.92769  | 47581406.47          |
| 1999Q4    | 28     | 536933.7   | 553644.7  | -16711.0 | 16710.9765  | 279256734.8          |
| 2000Q1    | 29     | 548175     | 557476.6  | -9301.6  | 9301.57014  | 86519207.02          |
| 2000Q2    | 30     | 543395.4   | 560858.8  | -17463.4 | 17463.4397  | 304971725.9          |
| 2000Q3    | 31     | 547678.9   | 563841.9  | -16163.0 | 16162.9665  | 261241487.1          |
| 2000Q4    | 32     | 549152.9   | 566470.9  | -17318.0 | 17318.0406  | 299914530.4          |
| 2001Q1    | 33     | 568758.9   | 568786.6  | -27.7    | 27.7417645  | 769.6054994          |
| 2001Q2    | 34     | 583195.2   | 570825.2  | 12370.0  | 12369.9726  | 153016223.1          |
| 2001Q3    | 35     | 589675.9   | 572619.0  | 17056.9  | 17056.8858  | 290937353.3          |
| 2001Q4    | 36     | 595970.9   | 574196.7  | 21774.2  | 21774.1535  | 474113759.9          |
| 2002Q1    | 37     | 596536.5   | 575583.9  | 20952.6  | 20952.5554  | 439009576.4          |
| 2002Q2    | 38     | 594155.3   | 576803.2  | 17352.1  | 17352.0691  | 301094301.2          |
| 2002Q3    | 39     | 580665.6   | 577874.6  | 2791.0   | 2790.96844  | 7789504.847          |
| 2002Q4    | 40     | 567335.8   | 578815.9  | -11480.1 | 11480.0534  | 131791626.1          |
| 2003Q1    | 41     | 560701.5   | 579642.5  | -18941.0 | 18941.0365  | 358762862.4          |
| 2003Q2    | 42     | 553728.3   | 580368.5  | -26640.2 | 26640.1827  | 709699336.5          |
| 2003Q3    | 43     | 548450.7   | 581005.9  | -32555.2 | 32555.1626  | 1059838614           |
| 2003Q4    | 44     | 558026.2   | 581565.4  | -23539.2 | 23539.2005  | 554093958.8          |

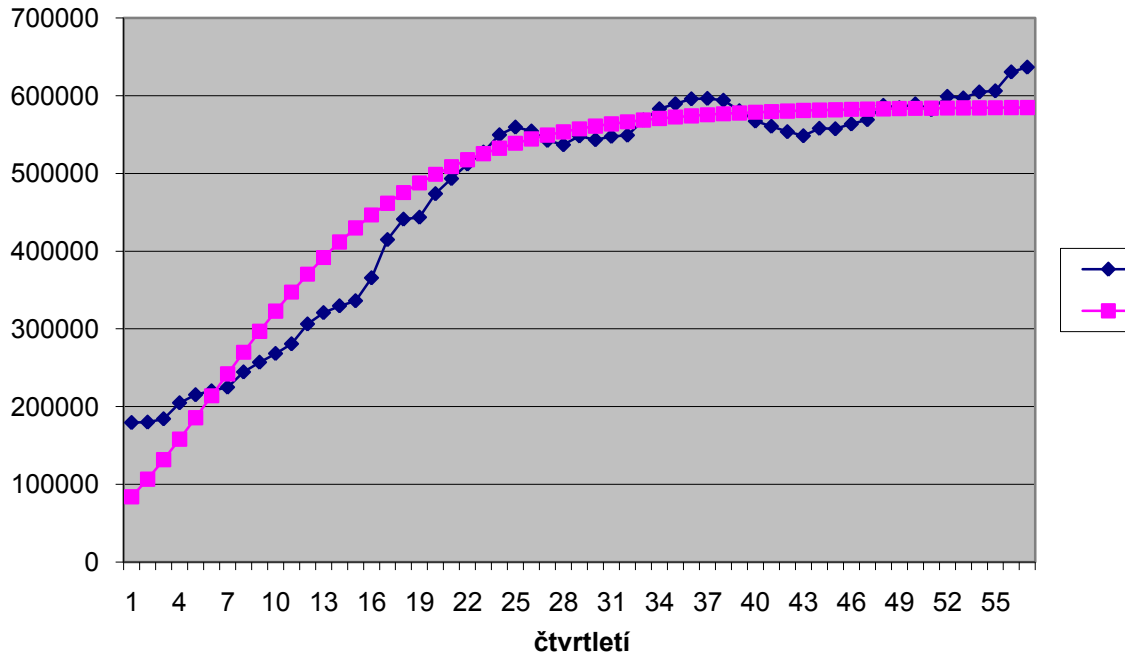
|        |    |            |            |           |            |              |
|--------|----|------------|------------|-----------|------------|--------------|
| 2004Q1 | 45 | 557442.5   | 582056.5   | -24614.0  | 24614.0407 | 605851001.3  |
| 2004Q2 | 46 | 563668.2   | 582487.6   | -18819.4  | 18819.3964 | 354169680.3  |
| 2004Q3 | 47 | 569176.8   | 582865.9   | -13689.1  | 13689.0811 | 187390941.9  |
| 2004Q4 | 48 | 587564.8   | 583197.8   | 4367.0    | 4366.97309 | 19070453.94  |
| 2005Q1 | 49 | 584631.3   | 583489.1   | 1142.2    | 1142.21166 | 1304647.485  |
| 2005Q2 | 50 | 589489.7   | 583744.6   | 5745.1    | 5745.065   | 33005771.86  |
| 2005Q3 | 51 | 582149.8   | 583968.8   | -1819.0   | 1819.03336 | 3308882.351  |
| 2005Q4 | 52 | 599177.5   | 584165.5   | 15012.0   | 15011.981  | 225359573.3  |
| 2006Q1 | 53 | 597108     | 584338.1   | 12769.9   | 12769.9394 | 163071353.5  |
| 2006Q2 | 54 | 604796.4   | 584489.4   | 20307.0   | 20306.9841 | 412373603    |
| 2006Q3 | 55 | 606284.6   | 584622.2   | 21662.4   | 21662.418  | 469260354.7  |
| 2006Q4 | 56 | 630641.9   | 584738.6   | 45903.3   | 45903.2616 | 2107109427   |
| 2007Q1 | 57 | 636801.4   | 584840.8   | 51960.6   | 51960.614  | 2699905404   |
| 2007Q2 | 58 |            | 584930.4   |           | 0          | 0            |
| 2007Q3 | 59 |            | 585009.0   |           | 0          | 0            |
| 2007Q4 | 60 |            | 585077.9   |           | 0          | 0            |
|        |    | 26961516.7 | 27360031.9 | -398515.2 | 1647453.6  | 8.157257E+10 |

|          |    |      |          |
|----------|----|------|----------|
| parametr | b= | beta | 0.876968 |
| parametr | a= | alfa | -2.21371 |
| parametr | c= | gama | 13.28034 |

|           |         |
|-----------|---------|
| THEILovoU | 0.12314 |
|-----------|---------|

| APE    | AMAPE    |
|--------|----------|
| 0.5314 | 0.361868 |
| 0.4068 | 0.255328 |
| 0.2856 | 0.166559 |
| 0.2280 | 0.128641 |
| 0.1367 | 0.073361 |
| 0.0282 | 0.014287 |

vyrovnání Gompertzovým trendem



|        |          |
|--------|----------|
| 0.0189 | 0.009247 |
| 0.0127 | 0.006318 |
| 0.0311 | 0.015323 |
| 0.0170 | 0.008413 |
| 0.0321 | 0.015815 |
| 0.0295 | 0.014541 |
| 0.0315 | 0.015523 |
| 0.0000 | 2.44E-05 |
| 0.0212 | 0.010719 |
| 0.0289 | 0.014675 |
| 0.0365 | 0.018608 |
| 0.0351 | 0.017876 |
| 0.0292 | 0.014819 |
| 0.0048 | 0.002409 |
| 0.0202 | 0.010016 |
| 0.0338 | 0.01661  |
| 0.0481 | 0.02349  |
| 0.0594 | 0.028824 |
| 0.0422 | 0.020656 |

|        |          |
|--------|----------|
| 0.0442 | 0.021601 |
| 0.0334 | 0.01642  |
| 0.0241 | 0.011882 |
| 0.0074 | 0.00373  |
| 0.0020 | 0.000978 |
| 0.0097 | 0.004897 |
| 0.0031 | 0.00156  |
| 0.0251 | 0.012686 |
| 0.0214 | 0.010809 |
| 0.0336 | 0.017075 |
| 0.0357 | 0.01819  |
| 0.0728 | 0.037769 |
| 0.0816 | 0.042533 |
|        |          |
| 0.0870 | 0.0451   |



- skutečnost
- vyrovnání

| čtvrtletí | pořadí | loghodnota | čtvrtletí | pořadí | loghodnota | čtvrtletí | pořadí | loghodnota |
|-----------|--------|------------|-----------|--------|------------|-----------|--------|------------|
| 1993Q1    | 1      | 12.09705   | 1997Q4    | 20     | 13.0688    | 2002Q3    | 39     | 13.27193   |
| 1993Q2    | 2      | 12.10004   | 1998Q1    | 21     | 13.10905   | 2002Q4    | 40     | 13.24871   |
| 1993Q3    | 3      | 12.12355   | 1998Q2    | 22     | 13.14622   | 2003Q1    | 41     | 13.23694   |
| 1993Q4    | 4      | 12.2297    | 1998Q3    | 23     | 13.17581   | 2003Q2    | 42     | 13.22443   |
| 1994Q1    | 5      | 12.27907   | 1998Q4    | 24     | 13.21721   | 2003Q3    | 43     | 13.21485   |
| 1994Q2    | 6      | 12.30193   | 1999Q1    | 25     | 13.23506   | 2003Q4    | 44     | 13.23216   |
| 1994Q3    | 7      | 12.32322   | 1999Q2    | 26     | 13.22594   | 2004Q1    | 45     | 13.23111   |
| 1994Q4    | 8      | 12.40697   | 1999Q3    | 27     | 13.20378   | 2004Q2    | 46     | 13.24222   |
| 1995Q1    | 9      | 12.45688   | 1999Q4    | 28     | 13.19363   | 2004Q3    | 47     | 13.25195   |
| 1995Q2    | 10     | 12.49968   | 2000Q1    | 29     | 13.21435   | 2004Q4    | 48     | 13.28374   |
| 1995Q3    | 11     | 12.54507   | 2000Q2    | 30     | 13.20559   | 2005Q1    | 49     | 13.27874   |
| 1995Q4    | 12     | 12.63211   | 2000Q3    | 31     | 13.21344   | 2005Q2    | 50     | 13.28701   |
| 1996Q1    | 13     | 12.67872   | 2000Q4    | 32     | 13.21613   | 2005Q3    | 51     | 13.27448   |
| 1996Q2    | 14     | 12.70562   | 2001Q1    | 33     | 13.25121   | 2005Q4    | 52     | 13.30331   |
| 1996Q3    | 15     | 12.7252    | 2001Q2    | 34     | 13.27628   | 2006Q1    | 53     | 13.29985   |
| 1996Q4    | 16     | 12.80936   | 2001Q3    | 35     | 13.28733   | 2006Q2    | 54     | 13.31265   |
| 1997Q1    | 17     | 12.93565   | 2001Q4    | 36     | 13.29795   | 2006Q3    | 55     | 13.3151    |
| 1997Q2    | 18     | 12.99722   | 2002Q1    | 37     | 13.2989    | 2006Q4    | 56     | 13.35449   |
| 1997Q3    | 19     | 13.00279   | 2002Q2    | 38     | 13.2949    | 2007Q1    | 57     | 13.36421   |
|           |        | 237.8498   |           |        | 251.1316   |           |        | 252.2279   |

|          |    |          |          |
|----------|----|----------|----------|
| parametr | b= | 0.082545 | 0.876968 |
| parametr | a= | -0.16667 | -2.21371 |
| parametr | c= | -14.4767 | 13.28034 |

| hodnota  | hodnota  | hodnota  |
|----------|----------|----------|
| 179342.9 | 473921.5 | 580665.6 |
| 179879.6 | 493387.1 | 567335.8 |
| 184157.9 | 512073.8 | 560701.5 |
| 204782.7 | 527451.8 | 553728.3 |
| 215145.3 | 549745.5 | 548450.7 |
| 220120.4 | 559644.4 | 558026.2 |
| 224857.6 | 554565.3 | 557442.5 |
| 244498.9 | 542409.4 | 563668.2 |
| 257013.4 | 536933.7 | 569176.8 |
| 268251.6 | 548175   | 587564.8 |
| 280707.7 | 543395.4 | 584631.3 |
| 306236.9 | 547678.9 | 589489.7 |
| 320848.6 | 549152.9 | 582149.8 |
| 329595.1 | 568758.9 | 599177.5 |
| 336112.3 | 583195.2 | 597108   |
| 365625.2 | 589675.9 | 604796.4 |
| 414840.1 | 595970.9 | 606284.6 |
| 441183   | 596536.5 | 630641.9 |
| 443649.1 | 594155.3 | 636801.4 |

| čtvrtletí | pořadí | hodnota   | čtvrtletí | pořadí | hodnota    | čtvrtletí | pořadí |
|-----------|--------|-----------|-----------|--------|------------|-----------|--------|
| 1993Q1    | 1      | 179342.9  | 1997Q4    | 20     | 473921.5   | 2002Q3    | 39     |
| 1993Q2    | 2      | 179879.6  | 1998Q1    | 21     | 493387.1   | 2002Q4    | 40     |
| 1993Q3    | 3      | 184157.9  | 1998Q2    | 22     | 512073.8   | 2003Q1    | 41     |
| 1993Q4    | 4      | 204782.7  | 1998Q3    | 23     | 527451.8   | 2003Q2    | 42     |
| 1994Q1    | 5      | 215145.3  | 1998Q4    | 24     | 549745.5   | 2003Q3    | 43     |
| 1994Q2    | 6      | 220120.4  | 1999Q1    | 25     | 559644.4   | 2003Q4    | 44     |
| 1994Q3    | 7      | 224857.6  | 1999Q2    | 26     | 554565.3   | 2004Q1    | 45     |
| 1994Q4    | 8      | 244498.9  | 1999Q3    | 27     | 542409.4   | 2004Q2    | 46     |
| 1995Q1    | 9      | 257013.4  | 1999Q4    | 28     | 536933.7   | 2004Q3    | 47     |
| 1995Q2    | 10     | 268251.6  | 2000Q1    | 29     | 548175     | 2004Q4    | 48     |
| 1995Q3    | 11     | 280707.7  | 2000Q2    | 30     | 543395.4   | 2005Q1    | 49     |
| 1995Q4    | 12     | 306236.9  | 2000Q3    | 31     | 547678.9   | 2005Q2    | 50     |
| 1996Q1    | 13     | 320848.6  | 2000Q4    | 32     | 549152.9   | 2005Q3    | 51     |
| 1996Q2    | 14     | 329595.1  | 2001Q1    | 33     | 568758.9   | 2005Q4    | 52     |
| 1996Q3    | 15     | 336112.3  | 2001Q2    | 34     | 583195.2   | 2006Q1    | 53     |
| 1996Q4    | 16     | 365625.2  | 2001Q3    | 35     | 589675.9   | 2006Q2    | 54     |
| 1997Q1    | 17     | 414840.1  | 2001Q4    | 36     | 595970.9   | 2006Q3    | 55     |
| 1997Q2    | 18     | 441183    | 2002Q1    | 37     | 596536.5   | 2006Q4    | 56     |
| 1997Q3    | 19     | 443649.1  | 2002Q2    | 38     | 594155.3   | 2007Q1    | 57     |
|           |        | 5416848.3 |           |        | 10466827.4 |           |        |

| hodnota |
|---------|
|---------|

|          |
|----------|
| 580665.6 |
|----------|

|          |
|----------|
| 567335.8 |
|----------|

|          |
|----------|
| 560701.5 |
|----------|

|          |
|----------|
| 553728.3 |
|----------|

|          |
|----------|
| 548450.7 |
|----------|

|          |
|----------|
| 558026.2 |
|----------|

|          |
|----------|
| 557442.5 |
|----------|

|          |
|----------|
| 563668.2 |
|----------|

|          |
|----------|
| 569176.8 |
|----------|

|          |
|----------|
| 587564.8 |
|----------|

|          |
|----------|
| 584631.3 |
|----------|

|          |
|----------|
| 589489.7 |
|----------|

|          |
|----------|
| 582149.8 |
|----------|

|          |
|----------|
| 599177.5 |
|----------|

|        |
|--------|
| 597108 |
|--------|

|          |
|----------|
| 604796.4 |
|----------|

|          |
|----------|
| 606284.6 |
|----------|

|          |
|----------|
| 630641.9 |
|----------|

|          |
|----------|
| 636801.4 |
|----------|

|          |
|----------|
| 11077841 |
|----------|