

čtvrtletí	pořadí	hodnota	$\ln(y_t)$	$\ln(t)$	$\ln^2(t)$	$\ln(t) \cdot \ln(y_t)$	skutečnost
1993Q1	1	179342.9	12.0970549	0	0	0	179342.9
1993Q2	2	179879.6	12.100043	0.693147	0.48045301	8.3871107	179879.6
1993Q3	3	184157.9	12.1235488	1.098612	1.20694896	13.3190797	184157.9
1993Q4	4	204782.7	12.2297047	1.386294	1.92181206	16.9539707	204782.7
1994Q1	5	215145.3	12.2790689	1.609438	2.59029039	19.762399	215145.3
1994Q2	6	220120.4	12.3019299	1.791759	3.210402	22.0420995	220120.4
1994Q3	7	224857.6	12.3232226	1.94591	3.78656631	23.9798839	224857.6
1994Q4	8	244498.9	12.4069661	2.079442	4.32407713	25.7995607	244498.9
1995Q1	9	257013.4	12.4568835	2.197225	4.82779584	27.3705706	257013.4
1995Q2	10	268251.6	12.4996806	2.302585	5.30189811	28.7815783	268251.6
1995Q3	11	280707.7	12.5450692	2.397895	5.74990174	30.0817621	280707.7
1995Q4	12	306236.9	12.6321143	2.484907	6.17476106	31.3896247	306236.9
1996Q1	13	320848.6	12.6787246	2.564949	6.57896521	32.5202866	320848.6
1996Q2	14	329595.1	12.7056202	2.639057	6.96462359	33.5308601	329595.1
1996Q3	15	336112.3	12.7252006	2.70805	7.33353589	34.4604821	336112.3
1996Q4	16	365625.2	12.809364	2.772589	7.68724822	35.5150983	365625.2
1997Q1	17	414840.1	12.9356484	2.833213	8.02709785	36.6494517	414840.1
1997Q2	18	441183	12.997215	2.890372	8.3542489	37.5667833	441183
1997Q3	19	443649.1	13.0027892	2.944439	8.6697209	38.2859194	443649.1
1997Q4	20	473921.5	13.068797	2.995732	8.97441185	39.1506169	473921.5
1998Q1	21	493387.1	13.1090493	3.044522	9.26911687	39.9107948	493387.1
1998Q2	22	512073.8	13.146224	3.091042	9.55454345	40.6355366	512073.8
1998Q3	23	527451.8	13.1758128	3.135494	9.83132398	41.3126847	527451.8
1998Q4	24	549745.5	13.2172107	3.178054	10.1000261	42.0050072	549745.5
1999Q1	25	559644.4	13.2350569	3.218876	10.3611616	42.6020046	559644.4
1999Q2	26	554565.3	13.2259398	3.258097	10.6151931	43.0913888	554565.3
1999Q3	27	542409.4	13.2037763	3.295837	10.8625406	43.5174929	542409.4
1999Q4	28	536933.7	13.1936299	3.332205	11.1035869	43.9638731	536933.7
2000Q1	29	548175	13.2143499	3.367296	11.3386812	44.4966252	548175
2000Q2	30	543395.4	13.2055925	3.401197	11.5681436	44.9148267	543395.4
2000Q3	31	547678.9	13.2134444	3.433987	11.7922681	45.3747992	547678.9
2000Q4	32	549152.9	13.2161322	3.465736	12.0113253	45.8036238	549152.9
2001Q1	33	568758.9	13.2512119	3.496508	12.2255651	46.3329626	568758.9
2001Q2	34	583195.2	13.2762772	3.526361	12.4352185	46.8169399	583195.2
2001Q3	35	589675.9	13.2873283	3.555348	12.6404998	47.2410771	589675.9
2001Q4	36	595970.9	13.2979471	3.583519	12.841608	47.6534453	595970.9
2002Q1	37	596536.5	13.2988957	3.610918	13.0387282	48.0212207	596536.5
2002Q2	38	594155.3	13.294896	3.637586	13.2320331	48.3613297	594155.3
2002Q3	39	580665.6	13.2719303	3.663562	13.4216839	48.6225349	580665.6
2002Q4	40	567335.8	13.2487066	3.688879	13.6078316	48.8728817	567335.8
2003Q1	41	560701.5	13.236944	3.713572	13.7906175	49.1563453	560701.5
2003Q2	42	553728.3	13.2244294	3.73767	13.9701742	49.428548	553728.3
2003Q3	43	548450.7	13.2148527	3.7612	14.1466263	49.7037054	548450.7
2003Q4	44	558026.2	13.2321612	3.78419	14.3200912	50.0730072	558026.2

2004Q1	45	557442.5	13.2311146	3.806662	14.4906793	50.3663878	557442.5
2004Q2	46	563668.2	13.2422211	3.828641	14.6584949	50.6997157	563668.2
2004Q3	47	569176.8	13.2519464	3.850148	14.8236366	51.0219496	569176.8
2004Q4	48	587564.8	13.2837418	3.871201	14.9861973	51.4240347	587564.8
2005Q1	49	584631.3	13.2787367	3.89182	15.1462652	51.6784569	584631.3
2005Q2	50	589489.7	13.2870125	3.912023	15.303924	51.9790987	589489.7
2005Q3	51	582149.8	13.2744831	3.931826	15.4592528	52.1929528	582149.8
2005Q4	52	599177.5	13.3033132	3.951244	15.6123269	52.5646326	599177.5
2006Q1	53	597108	13.2998533	3.970292	15.7632179	52.8042999	597108
2006Q2	54	604796.4	13.3126472	3.988984	15.9119937	53.1039371	604796.4
2006Q3	55	606284.6	13.3151048	4.007333	16.0587193	53.3580613	606284.6
2006Q4	56	630641.9	13.3544935	4.025352	16.2034562	53.7565329	630641.9
2007Q1	57	636801.4	13.3642131	4.043051	16.3462636	54.0321988	636801.4
2007Q2				0		0	
2007Q3				0		0	
2007Q4				0		0	
sumace	1653	26961517	741.209326	176.3958	591.007775	2312.44205	26961517

TH

$X'X=$	57	176.395848
	176.39585	591.007775

THEILovoU

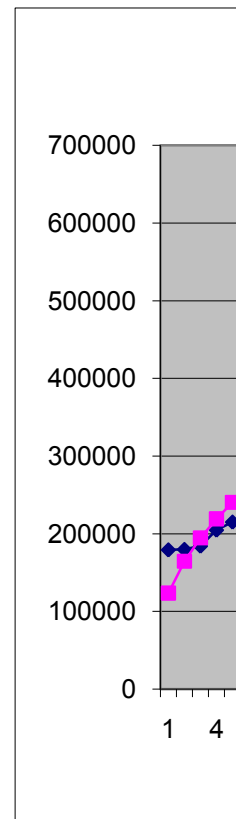
$\det(X'X)$	2571.9478
-------------	-----------

$(X'X)^{-1}$	0.22979	-0.06858454
	-0.068585	0.02216219

$X'y=$	741.20933
	2312.4421

b_1	11.724692	$\exp(b_1)$	123586
b_2	0.4132856		

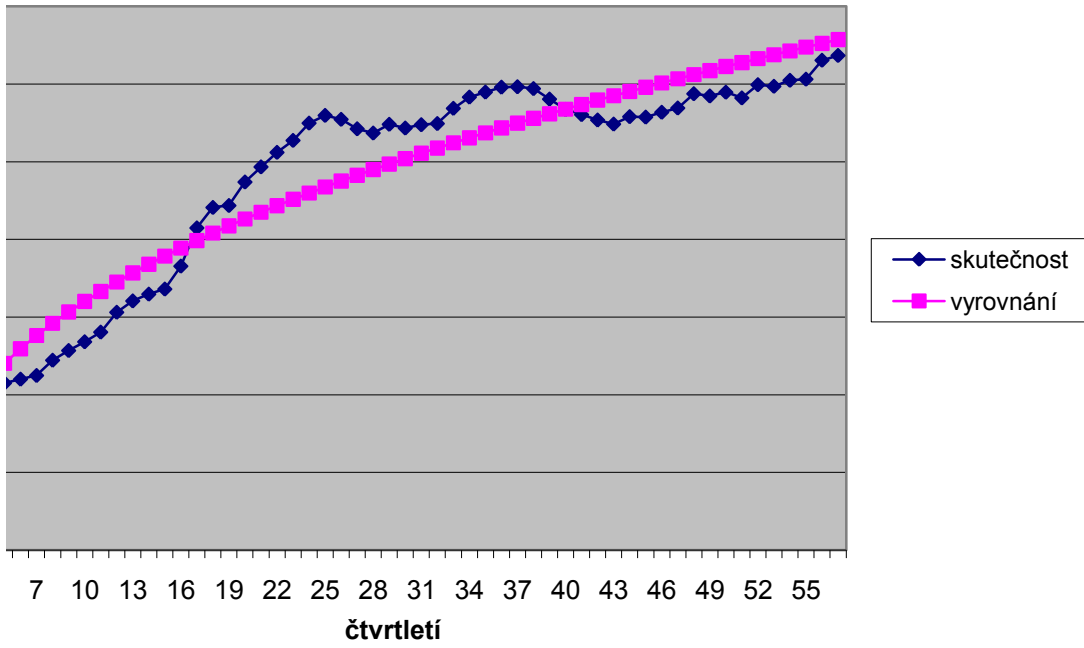
vyrovnání	rezidua	abs.rezidua	rezidua^2	APE	AAPE
123586.0	55756.9	55756.9	3108835938	0.3109	0.18406
164581.3	15298.3	15298.3	234037650.5	0.0850	0.044412
194606.1	-10448.2	10448.2	109165379.4	0.0567	0.027585
219175.4	-14392.7	14392.7	207150941.3	0.0703	0.033948
240349.6	-25204.3	25204.3	635256643.3	0.1172	0.055334
259159.9	-39039.5	39039.5	1524085680	0.1774	0.081454
276207.8	-51350.2	51350.2	2636848094	0.2284	0.102482
291879.3	-47380.4	47380.4	2244899618	0.1938	0.088334
306438.9	-49425.5	49425.5	2442877337	0.1923	0.087719
320077.2	-51825.6	51825.6	2685895065	0.1932	0.08809
332936.8	-52229.1	52229.1	2727876420	0.1861	0.085113
345127.2	-38890.3	38890.3	1512458585	0.1270	0.059706
356735.2	-35886.6	35886.6	1287845303	0.1118	0.052963
367830.2	-38235.1	38235.1	1461922950	0.1160	0.054823
378469.4	-42357.1	42357.1	1794122603	0.1260	0.059275
388700.1	-23074.9	23074.9	532449766.3	0.0631	0.03059
398562.1	16278.0	16278.0	264973417.2	0.0392	0.020012
408089.3	33093.7	33093.7	1095191961	0.0750	0.038967
417310.8	26338.3	26338.3	693706094.2	0.0594	0.030592
426251.7	47669.8	47669.8	2272408618	0.1006	0.052956
434934.0	58453.1	58453.1	3416763651	0.1185	0.062966
443377.0	68696.8	68696.8	4719253403	0.1342	0.0719
451597.7	75854.1	75854.1	5753850757	0.1438	0.077477
459611.2	90134.3	90134.3	8124191234	0.1640	0.089299
467431.2	92213.2	92213.2	8503283257	0.1648	0.089782
475069.6	79495.7	79495.7	6319558401	0.1433	0.077208
482537.7	59871.7	59871.7	3584625843	0.1104	0.058414
489845.1	47088.6	47088.6	2217337866	0.0877	0.045861
497000.9	51174.1	51174.1	2618784209	0.0934	0.048962
504013.4	39382.0	39382.0	1550938339	0.0725	0.037599
510890.1	36788.8	36788.8	1353415467	0.0672	0.034753
517637.8	31515.1	31515.1	993200935.6	0.0574	0.029542
524262.9	44496.0	44496.0	1979894202	0.0782	0.040709
530771.2	52424.0	52424.0	2748274151	0.0899	0.047061
537168.2	52507.7	52507.7	2757062083	0.0890	0.046597
543458.8	52512.1	52512.1	2757524971	0.0881	0.046086
549647.6	46888.9	46888.9	2198564851	0.0786	0.040909
555739.1	38416.2	38416.2	1475800643	0.0647	0.033408
561737.3	18928.3	18928.3	358280112.7	0.0326	0.016569
567645.9	-310.1	310.1	96162.06869	0.0005	0.000273
573468.4	-12766.9	12766.9	162994847.1	0.0228	0.011257
579208.2	-25479.9	25479.9	649227777.7	0.0460	0.02249
584868.4	-36417.7	36417.7	1326250313	0.0664	0.032134
590451.9	-32425.7	32425.7	1051424482	0.0581	0.028234



595961.4	-38518.9	38518.9	1483703088	0.0691	0.033396
601399.5	-37731.3	37731.3	1423649676	0.0669	0.032385
606768.7	-37591.9	37591.9	1413148723	0.0660	0.031967
612071.2	-24506.4	24506.4	600565771.2	0.0417	0.020428
617309.4	-32678.1	32678.1	1067857600	0.0559	0.027188
622485.2	-32995.5	32995.5	1088702075	0.0560	0.027225
627600.6	-45450.8	45450.8	2065774887	0.0781	0.03757
632657.5	-33480.0	33480.0	1120909774	0.0559	0.027179
637657.6	-40549.6	40549.6	1644273659	0.0679	0.03284
642602.7	-37806.3	37806.3	1429319876	0.0625	0.030308
647494.4	-41209.8	41209.8	1698248246	0.0680	0.032868
652334.2	-21692.3	21692.3	470554142	0.0344	0.016908
657123.5	-20322.1	20322.1	412986416.6	0.0319	0.015706
	0.0	0	0		
	0.0	0	0		
	0.0	0	0		
26801913.9	159602.8	2302948.6	1.1201E+11	0.0957	0.0480

0.14635

vyrovnání mocninným trendem



čtvrtletí	pořadí	hodnota	=t^2	=t^3	=t^4	t*yt
1993Q1	1	179342.9	1	1	1	179342.9
1993Q2	2	179879.6	4	8	16	359759.2
1993Q3	3	184157.9	9	27	81	552473.7
1993Q4	4	204782.7	16	64	256	819130.8
1994Q1	5	215145.3	25	125	625	1075726.5
1994Q2	6	220120.4	36	216	1296	1320722.4
1994Q3	7	224857.6	49	343	2401	1574003.2
1994Q4	8	244498.9	64	512	4096	1955991.2
1995Q1	9	257013.4	81	729	6561	2313120.6
1995Q2	10	268251.6	100	1000	10000	2682516
1995Q3	11	280707.7	121	1331	14641	3087784.7
1995Q4	12	306236.9	144	1728	20736	3674842.8
1996Q1	13	320848.6	169	2197	28561	4171031.8
1996Q2	14	329595.1	196	2744	38416	4614331.4
1996Q3	15	336112.3	225	3375	50625	5041684.5
1996Q4	16	365625.2	256	4096	65536	5850003.2
1997Q1	17	414840.1	289	4913	83521	7052281.7
1997Q2	18	441183	324	5832	104976	7941294
1997Q3	19	443649.1	361	6859	130321	8429332.9
1997Q4	20	473921.5	400	8000	160000	9478430
1998Q1	21	493387.1	441	9261	194481	10361129.1
1998Q2	22	512073.8	484	10648	234256	11265623.6
1998Q3	23	527451.8	529	12167	279841	12131391.4
1998Q4	24	549745.5	576	13824	331776	13193892
1999Q1	25	559644.4	625	15625	390625	13991110
1999Q2	26	554565.3	676	17576	456976	14418697.8
1999Q3	27	542409.4	729	19683	531441	14645053.8
1999Q4	28	536933.7	784	21952	614656	15034143.6
2000Q1	29	548175	841	24389	707281	15897075
2000Q2	30	543395.4	900	27000	810000	16301862
2000Q3	31	547678.9	961	29791	923521	16978045.9
2000Q4	32	549152.9	1024	32768	1048576	17572892.8
2001Q1	33	568758.9	1089	35937	1185921	18769043.7
2001Q2	34	583195.2	1156	39304	1336336	19828636.8
2001Q3	35	589675.9	1225	42875	1500625	20638656.5
2001Q4	36	595970.9	1296	46656	1679616	21454952.4
2002Q1	37	596536.5	1369	50653	1874161	22071850.5
2002Q2	38	594155.3	1444	54872	2085136	22577901.4
2002Q3	39	580665.6	1521	59319	2313441	22645958.4
2002Q4	40	567335.8	1600	64000	2560000	22693432
2003Q1	41	560701.5	1681	68921	2825761	22988761.5
2003Q2	42	553728.3	1764	74088	3111696	23256588.6
2003Q3	43	548450.7	1849	79507	3418801	23583380.1
2003Q4	44	558026.2	1936	85184	3748096	24553152.8

2004Q1	45	557442.5	2025	91125	4100625	25084912.5
2004Q2	46	563668.2	2116	97336	4477456	25928737.2
2004Q3	47	569176.8	2209	103823	4879681	26751309.6
2004Q4	48	587564.8	2304	110592	5308416	28203110.4
2005Q1	49	584631.3	2401	117649	5764801	28646933.7
2005Q2	50	589489.7	2500	125000	6250000	29474485
2005Q3	51	582149.8	2601	132651	6765201	29689639.8
2005Q4	52	599177.5	2704	140608	7311616	31157230
2006Q1	53	597108	2809	148877	7890481	31646724
2006Q2	54	604796.4	2916	157464	8503056	32659005.6
2006Q3	55	606284.6	3025	166375	9150625	33345653
2006Q4	56	630641.9	3136	175616	9834496	35315946.4
2007Q1	57	636801.4	3249	185193	10556001	36297679.8
2007Q2			0			
2007Q3			0			
2007Q4			0			
sumace	1653	26961516.7	63365	2732409	125678141	903228402

$X'X =$

$\text{adj}(X'X) =$

$\det(X'X) =$

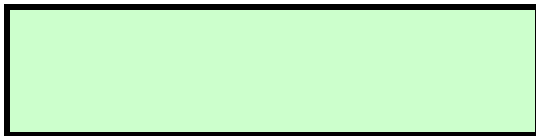
$(X'X)^{-1} =$

$X'y =$

b0	177842	spočteno GRETlem
b1	-2058.54	spočteno GRETlem
b2	1692.47	spočteno GRETlem
b3	-54.3003	spočteno GRETlem
b4	0.488188	spočteno GRETlem

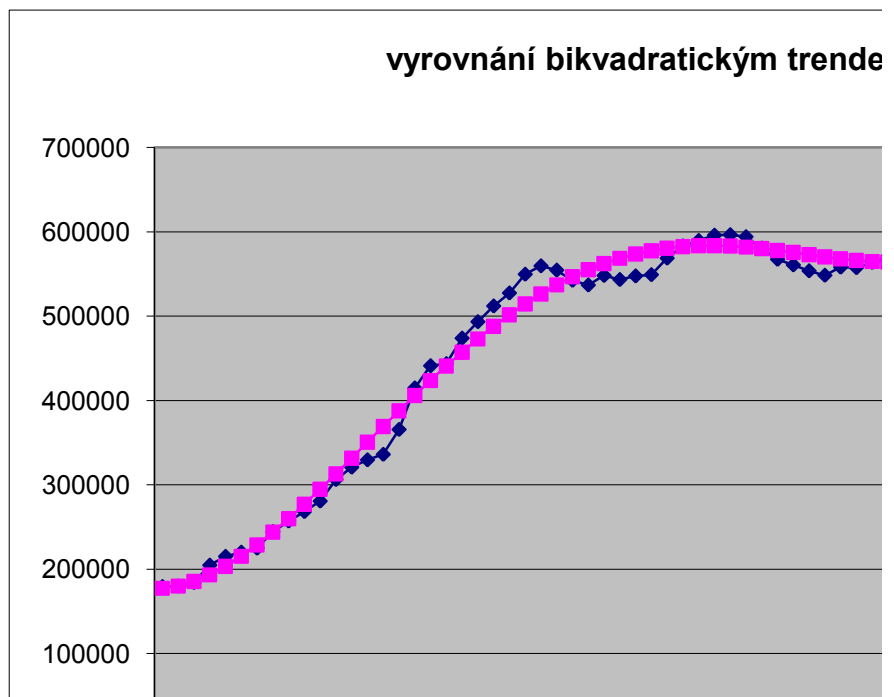
t ² *yt	skutečnost	vyrovnání	rezidua	abs.rezidua	rezidua ²
179342.9	179342.9	177422.1	1920.8	1920.7821	3689403.92
719518.4	179879.6	180068.2	-188.6	188.6086	35573.207
1657421.1	184157.9	185472.0	-1314.1	1314.1451	1726977.42
3276523.2	204782.7	193337.1	11445.6	11445.5831	131001372
5378632.5	215145.3	203378.6	11766.7	11766.6700	138454523
7924334.4	220120.4	215323.5	4796.9	4796.8932	23010183.9
11018022.4	224857.6	228910.4	-4052.8	4052.7865	16425078.3
15647929.6	244498.9	243889.6	609.3	609.2756	371216.698
20818085.4	257013.4	260023.3	-3009.9	3009.8928	9059454.47
26825160	268251.6	277085.2	-8833.6	8833.5800	78032135.6
33965631.7	280707.7	294860.8	-14153.1	14153.0912	200309991
44098113.6	306236.9	313147.3	-6910.4	6910.4480	47754291.1
54223413.4	320848.6	331753.8	-10905.2	10905.1884	118923133
64600639.6	329595.1	350500.8	-20905.7	20905.6670	437046913
75625267.5	336112.3	369220.7	-33108.4	33108.3550	1096163171
93600051.2	365625.2	387757.5	-22132.3	22132.3400	489840472
119888788.9	414840.1	405967.2	8872.9	8872.8740	78727892.2
142943292	441183	423717.2	17465.8	17465.7661	305052986
160157325.1	443649.1	440886.8	2762.3	2762.2994	7630297.71
189568600	473921.5	457366.9	16554.6	16554.6200	274055443
217583711.1	493387.1	473060.1	20327.0	20326.9579	413185216
247843719.2	512073.8	487881.0	24192.8	24192.8263	585292843
279022002.2	527451.8	501755.5	25696.3	25696.3220	660300964
316653408	549745.5	514621.5	35124.0	35124.0253	1233697154
349777750	559644.4	526428.5	33215.9	33215.9000	1103296013
374886142.8	554565.3	537137.8	17427.5	17427.4933	303717523
395416452.6	542409.4	546722.4	-4313.0	4312.9640	18601658.5
420956020.8	536933.7	555166.9	-18233.2	18233.1577	332448041
461015175	548175	562467.7	-14292.7	14292.6901	204280991
489055860	543395.4	568633.0	-25237.6	25237.5800	636935444
526319422.9	547678.9	573682.6	-26003.7	26003.6626	676190471
562332569.6	549152.9	577648.0	-28495.1	28495.0899	811970148
619378442.1	568758.9	580572.5	-11813.6	11813.6300	139561855
674173651.2	583195.2	582511.2	684.0	684.0320	467899.821
722352977.5	589675.9	583530.6	6145.3	6145.2950	37764650.6
772378286.4	595970.9	583709.3	12261.6	12261.6410	150347840
816658468.5	596536.5	583137.3	13399.2	13399.2356	179539516
857960253.2	594155.3	581916.5	12238.8	12238.8280	149788912
883192377.6	580665.6	580160.4	505.2	505.1508	255177.323
907737280	567335.8	577994.5	-10658.7	10658.6800	113607459
942539221.5	560701.5	575555.6	-14854.1	14854.0648	220643240
976776721.2	553728.3	572992.4	-19264.1	19264.1204	371106337
1014085344	548450.7	570465.5	-22014.8	22014.7805	484650560
1080338723	558026.2	568146.9	-10120.7	10120.6948	102428464

1128821063	557442.5	566220.5	-8778.0	8778.0300	77053810.7
1192721911	563668.2	564882.0	-1213.8	1213.7689	1473235.01
1257311551	569176.8	564338.5	4838.3	4838.2889	23409039.2
1353749299	587564.8	564809.2	22755.6	22755.6274	517818578
1403699751	584631.3	566524.7	18106.6	18106.6141	327849475
1473724250	589489.7	569727.5	19762.2	19762.2000	390544549
1514171630	582149.8	574671.8	7478.0	7478.0195	55920775.8
1620175960	599177.5	581623.4	17554.1	17554.0906	308146097
1677276372	597108	590860.0	6248.0	6248.0147	39037687.3
1763586302	604796.4	602670.8	2125.6	2125.5767	4518076.19
1834010915	606284.6	617357.0	-11072.4	11072.3550	122597045
1977692998	630641.9	635231.1	-4589.2	4589.2284	21061017.7
2068967749	636801.4	656617.8	-19816.4	19816.4083	392690037
0				0.0000	0
0				0.0000	0
0				0.0000	0
36246459825	26961516.7	26961520.81	-4.105808	752565.9105	1.4670E+10

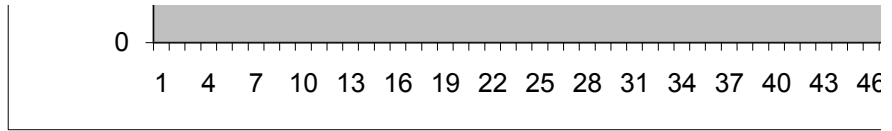


THEILovoU 0.08354

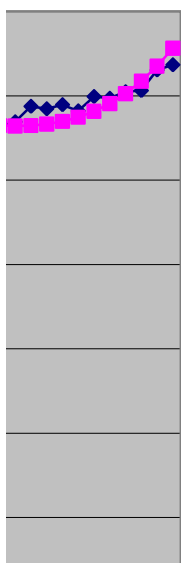
APE	AAPE
0.0107	0.01077
0.0010	0.00105
0.0071	0.00711
0.0559	0.05750
0.0547	0.05623
0.0218	0.02203
0.0180	0.01786
0.0025	0.00250
0.0117	0.01164
0.0329	0.03240
0.0504	0.04918
0.0226	0.02231
0.0340	0.03342
0.0634	0.06148
0.0985	0.09388
0.0605	0.05875
0.0214	0.02162
0.0396	0.04039
0.0062	0.00625
0.0349	0.03555
0.0412	0.04207
0.0472	0.04839
0.0487	0.04993
0.0639	0.06600
0.0594	0.06117
0.0314	0.03193
0.0080	0.00792
0.0340	0.03339
0.0261	0.02574
0.0464	0.04539
0.0475	0.04638
0.0519	0.05058
0.0208	0.02056
0.0012	0.00117
0.0104	0.01048
0.0206	0.02079
0.0225	0.02272
0.0206	0.02081
0.0009	0.00087
0.0188	0.01861
0.0265	0.02615
0.0348	0.03420
0.0401	0.03935
0.0181	0.01797



0.0157	0.01562
0.0022	0.00215
0.0085	0.00854
0.0387	0.03949
0.0310	0.03146
0.0335	0.03410
0.0128	0.01293
0.0293	0.02973
0.0105	0.01052
0.0035	0.00352
0.0183	0.01810
0.0073	0.00725
0.0311	0.03064
0.0286	0.0286



em



◆ skutečnost
■ vyrovnání



3 49 52 55

čtvrtletí	pořadí	hodnota	=t^2	=t^3	=t^4	t*yt
1993Q1	1	179342.9	1	1	1	179342.9
1993Q2	2	179879.6	4	8	16	359759.2
1993Q3	3	184157.9	9	27	81	552473.7
1993Q4	4	204782.7	16	64	256	819130.8
1994Q1	5	215145.3	25	125	625	1075726.5
1994Q2	6	220120.4	36	216	1296	1320722.4
1994Q3	7	224857.6	49	343	2401	1574003.2
1994Q4	8	244498.9	64	512	4096	1955991.2
1995Q1	9	257013.4	81	729	6561	2313120.6
1995Q2	10	268251.6	100	1000	10000	2682516
1995Q3	11	280707.7	121	1331	14641	3087784.7
1995Q4	12	306236.9	144	1728	20736	3674842.8
1996Q1	13	320848.6	169	2197	28561	4171031.8
1996Q2	14	329595.1	196	2744	38416	4614331.4
1996Q3	15	336112.3	225	3375	50625	5041684.5
1996Q4	16	365625.2	256	4096	65536	5850003.2
1997Q1	17	414840.1	289	4913	83521	7052281.7
1997Q2	18	441183	324	5832	104976	7941294
1997Q3	19	443649.1	361	6859	130321	8429332.9
1997Q4	20	473921.5	400	8000	160000	9478430
1998Q1	21	493387.1	441	9261	194481	10361129.1
1998Q2	22	512073.8	484	10648	234256	11265623.6
1998Q3	23	527451.8	529	12167	279841	12131391.4
1998Q4	24	549745.5	576	13824	331776	13193892
1999Q1	25	559644.4	625	15625	390625	13991110
1999Q2	26	554565.3	676	17576	456976	14418697.8
1999Q3	27	542409.4	729	19683	531441	14645053.8
1999Q4	28	536933.7	784	21952	614656	15034143.6
2000Q1	29	548175	841	24389	707281	15897075
2000Q2	30	543395.4	900	27000	810000	16301862
2000Q3	31	547678.9	961	29791	923521	16978045.9
2000Q4	32	549152.9	1024	32768	1048576	17572892.8
2001Q1	33	568758.9	1089	35937	1185921	18769043.7
2001Q2	34	583195.2	1156	39304	1336336	19828636.8
2001Q3	35	589675.9	1225	42875	1500625	20638656.5
2001Q4	36	595970.9	1296	46656	1679616	21454952.4
2002Q1	37	596536.5	1369	50653	1874161	22071850.5
2002Q2	38	594155.3	1444	54872	2085136	22577901.4
2002Q3	39	580665.6	1521	59319	2313441	22645958.4
2002Q4	40	567335.8	1600	64000	2560000	22693432
2003Q1	41	560701.5	1681	68921	2825761	22988761.5
2003Q2	42	553728.3	1764	74088	3111696	23256588.6
2003Q3	43	548450.7	1849	79507	3418801	23583380.1

2003Q4	44	558026.2	1936	85184	3748096	24553152.8
2004Q1	45	557442.5	2025	91125	4100625	25084912.5
2004Q2	46	563668.2	2116	97336	4477456	25928737.2
2004Q3	47	569176.8	2209	103823	4879681	26751309.6
2004Q4	48	587564.8	2304	110592	5308416	28203110.4
2005Q1	49	584631.3	2401	117649	5764801	28646933.7
2005Q2	50	589489.7	2500	125000	6250000	29474485
2005Q3	51	582149.8	2601	132651	6765201	29689639.8
2005Q4	52	599177.5	2704	140608	7311616	31157230
2006Q1	53	597108	2809	148877	7890481	31646724
2006Q2	54	604796.4	2916	157464	8503056	32659005.6
2006Q3	55	606284.6	3025	166375	9150625	33345653
2006Q4	56	630641.9	3136	175616	9834496	35315946.4
2007Q1	57	636801.4	3249	185193	10556001	36297679.8
2007Q2			0			
2007Q3			0			
2007Q4			0			
sumace	1653	26961516.7	63365	2732409	125678141	903228402

$X'X =$

$\text{adj}(X'X) =$

$\det(X'X) =$

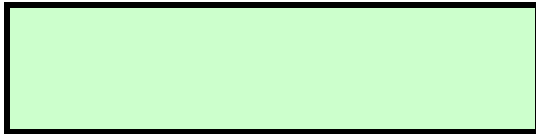
$(X'X)^{-1} =$

$X'y =$

b1	90494.7	spočteno GRETlem
b2	25880.2	spočteno GRETlem
b3	-431.497	spočteno GRETlem
b4	2.32952	spočteno GRETlem

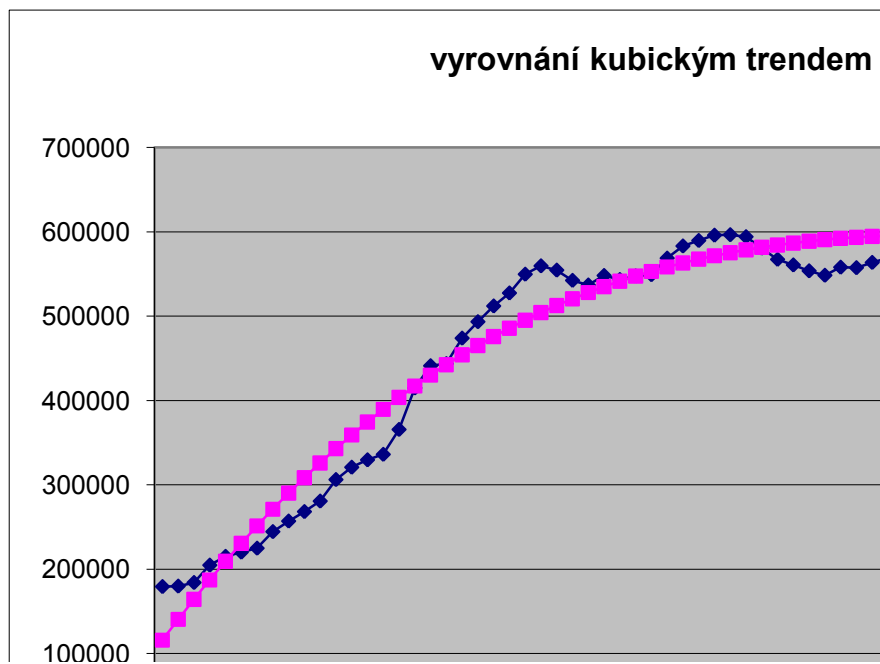
t ² *yt	skutečnost	vyrovnání	rezidua	abs.rezidua	rezidua ²
179342.9	179342.9	115945.7	63397.2	63397.16748	4019200844
719518.4	179879.6	140547.7	39331.9	39331.85184	1546994569
1657421.1	184157.9	164314.7	19843.2	19843.17596	393751632
3276523.2	204782.7	187260.6	17522.1	17522.06272	307022682
5378632.5	215145.3	209399.5	5745.8	5745.835	33014619.8
7924334.4	220120.4	230745.2	-10624.8	10624.78432	112886042
11018022.4	224857.6	251311.8	-26454.2	26454.17236	699823235
15647929.6	244498.9	271113.2	-26614.3	26614.30624	708321297
20818085.4	257013.4	290163.5	-33150.1	33150.06308	1098926682
26825160	268251.6	308476.5	-40224.9	40224.92	1618044189
33965631.7	280707.7	326066.4	-45358.7	45358.65412	2057407504
44098113.6	306236.9	342946.9	-36710.0	36710.04256	1347627225
54223413.4	320848.6	359132.3	-38283.7	38283.66244	1465638810
64600639.6	329595.1	374636.3	-45041.2	45041.19088	2028708876
75625267.5	336112.3	389473.0	-53360.7	53360.705	2847364838
93600051.2	365625.2	403656.4	-38031.2	38031.18192	1446370798
119888788.9	414840.1	417200.4	-2360.3	2360.29876	5571010.24
142943292	441183	430119.0	11064.0	11063.96736	122411374
160157325.1	443649.1	442426.3	1222.8	1222.83932	1495336
189568600	473921.5	454136.1	19785.4	19785.44	391463636
217583711.1	493387.1	465262.4	28124.7	28124.69228	790998316
247843719.2	512073.8	475819.3	36254.5	36254.51904	1314390151
279022002.2	527451.8	485820.7	41631.1	41631.14316	1733152081
316653408	549745.5	495280.5	54465.0	54464.98752	2966434866
349777750	559644.4	504212.8	55431.6	55431.575	3072659507
374886142.8	554565.3	512631.6	41933.7	41933.72848	1758437584
395416452.6	542409.4	520550.7	21858.7	21858.67084	477801491
420956020.8	536933.7	527984.3	8949.4	8949.42496	80092207.1
461015175	548175	534946.2	13228.8	13228.81372	175001512
489055860	543395.4	541450.4	1945.0	1944.96	3782869.4
526319422.9	547678.9	547511.0	167.9	167.88668	28185.9373
562332569.6	549152.9	553141.9	-3989.0	3988.98336	15911988.2
619378442.1	568758.9	558357.0	10401.9	10401.87276	108198957
674173651.2	583195.2	563170.4	20024.8	20024.77792	400991731
722352977.5	589675.9	567596.0	22079.9	22079.855	487519997
772378286.4	595970.9	571647.9	24323.0	24323.02688	591609637
816658468.5	596536.5	575339.9	21196.6	21196.61644	449296549
857960253.2	594155.3	578686.1	15469.2	15469.24656	239297589
883192377.6	580665.6	581700.4	-1034.8	1034.75988	1070728.01
907737280	567335.8	584396.8	-17061.0	17060.98	291077039
942539221.5	560701.5	586789.3	-26087.8	26087.79092	680572835
976776721.2	553728.3	588891.9	-35163.6	35163.56976	1236476638
1014085344	548450.7	590718.5	-42267.8	42267.79364	1786566379

1080338723	558026.2	592283.1	-34256.9	34256.93968	1173537916
1128821063	557442.5	593599.8	-36157.3	36157.285	1307349259
1192721911	563668.2	594682.4	-31014.2	31014.20672	961881018
1257311551	569176.8	595545.0	-26368.2	26368.18196	695281020
1353749299	587564.8	596201.5	-8636.7	8636.68784	74592376.8
1403699751	584631.3	596665.9	-12034.6	12034.60148	144831633
1473724250	589489.7	596952.2	-7462.5	7462.5	55688906.3
1514171630	582149.8	597074.4	-14924.6	14924.56052	222742507
1620175960	599177.5	597046.4	2131.1	2131.13984	4541757.02
1677276372	597108	596882.2	225.8	225.82396	50996.4609
1763586302	604796.4	596595.8	8200.6	8200.61472	67250081.8
1834010915	606284.6	596201.2	10083.4	10083.435	101675661
1977692998	630641.9	595712.3	34929.6	34929.60768	1220077493
2068967749	636801.4	595143.1	41658.3	41658.25564	1735410263
0				0	0
0				0	0
0				0	0
36246459825	26961516.7	26961562.51	-45.80868	1385299.8	4.8678E+10

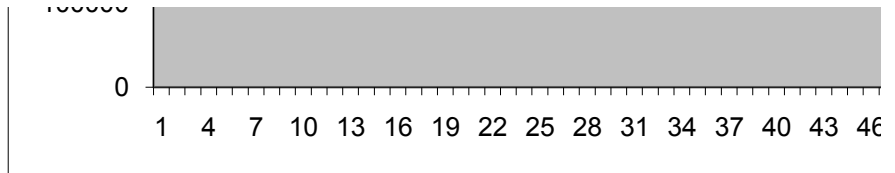


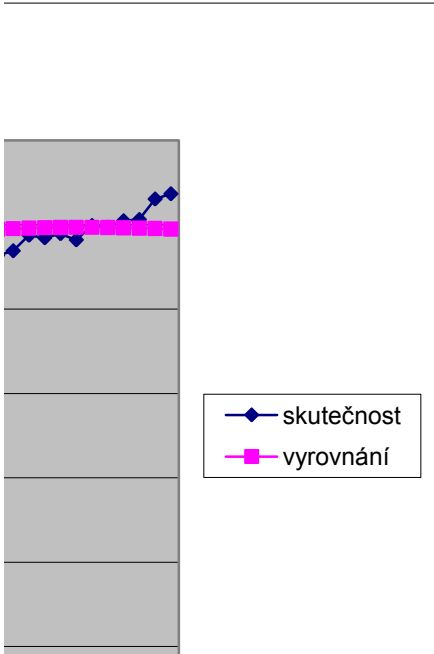
THEILovoU 0.11334

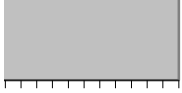
APE	AAPE
0.3535	0.214696
0.2187	0.122748
0.1078	0.056943
0.0856	0.044694
0.0267	0.013534
0.0483	0.023565
0.1176	0.055556
0.1089	0.051617
0.1290	0.060584
0.1500	0.069747
0.1616	0.074754
0.1199	0.056548
0.1193	0.056301
0.1367	0.063958
0.1588	0.073542
0.1040	0.049437
0.0057	0.002837
0.0251	0.012698
0.0028	0.00138
0.0417	0.021319
0.0570	0.029338
0.0708	0.036699
0.0789	0.041086
0.0991	0.052118
0.0990	0.052104
0.0756	0.039293
0.0403	0.020564
0.0167	0.008404
0.0241	0.012214
0.0036	0.001793
0.0003	0.000153
0.0073	0.003619
0.0183	0.009229
0.0343	0.017468
0.0374	0.019079
0.0408	0.020831
0.0355	0.018088
0.0260	0.01319
0.0018	0.00089
0.0301	0.014813
0.0465	0.022735
0.0635	0.030775
0.0771	0.037104



0.0614	0.029781
0.0649	0.031413
0.0550	0.026774
0.0463	0.022639
0.0147	0.007296
0.0206	0.010188
0.0127	0.00629
0.0256	0.012656
0.0036	0.001782
0.0004	0.000189
0.0136	0.006826
0.0166	0.008385
0.0554	0.028482
0.0654	0.033815
0.0642	0.0325







3 49 52 55

čtvrtletí	pořadí	hodnota	=t^2	=t^3	=t^4	t*yt
1993Q1	1	179342.9	1	1	1	179342.9
1993Q2	2	179879.6	4	8	16	359759.2
1993Q3	3	184157.9	9	27	81	552473.7
1993Q4	4	204782.7	16	64	256	819130.8
1994Q1	5	215145.3	25	125	625	1075726.5
1994Q2	6	220120.4	36	216	1296	1320722.4
1994Q3	7	224857.6	49	343	2401	1574003.2
1994Q4	8	244498.9	64	512	4096	1955991.2
1995Q1	9	257013.4	81	729	6561	2313120.6
1995Q2	10	268251.6	100	1000	10000	2682516
1995Q3	11	280707.7	121	1331	14641	3087784.7
1995Q4	12	306236.9	144	1728	20736	3674842.8
1996Q1	13	320848.6	169	2197	28561	4171031.8
1996Q2	14	329595.1	196	2744	38416	4614331.4
1996Q3	15	336112.3	225	3375	50625	5041684.5
1996Q4	16	365625.2	256	4096	65536	5850003.2
1997Q1	17	414840.1	289	4913	83521	7052281.7
1997Q2	18	441183	324	5832	104976	7941294
1997Q3	19	443649.1	361	6859	130321	8429332.9
1997Q4	20	473921.5	400	8000	160000	9478430
1998Q1	21	493387.1	441	9261	194481	10361129.1
1998Q2	22	512073.8	484	10648	234256	11265623.6
1998Q3	23	527451.8	529	12167	279841	12131391.4
1998Q4	24	549745.5	576	13824	331776	13193892
1999Q1	25	559644.4	625	15625	390625	13991110
1999Q2	26	554565.3	676	17576	456976	14418697.8
1999Q3	27	542409.4	729	19683	531441	14645053.8
1999Q4	28	536933.7	784	21952	614656	15034143.6
2000Q1	29	548175	841	24389	707281	15897075
2000Q2	30	543395.4	900	27000	810000	16301862
2000Q3	31	547678.9	961	29791	923521	16978045.9
2000Q4	32	549152.9	1024	32768	1048576	17572892.8
2001Q1	33	568758.9	1089	35937	1185921	18769043.7
2001Q2	34	583195.2	1156	39304	1336336	19828636.8
2001Q3	35	589675.9	1225	42875	1500625	20638656.5
2001Q4	36	595970.9	1296	46656	1679616	21454952.4
2002Q1	37	596536.5	1369	50653	1874161	22071850.5
2002Q2	38	594155.3	1444	54872	2085136	22577901.4
2002Q3	39	580665.6	1521	59319	2313441	22645958.4
2002Q4	40	567335.8	1600	64000	2560000	22693432
2003Q1	41	560701.5	1681	68921	2825761	22988761.5
2003Q2	42	553728.3	1764	74088	3111696	23256588.6
2003Q3	43	548450.7	1849	79507	3418801	23583380.1

2003Q4	44	558026.2	1936	85184	3748096	24553152.8
2004Q1	45	557442.5	2025	91125	4100625	25084912.5
2004Q2	46	563668.2	2116	97336	4477456	25928737.2
2004Q3	47	569176.8	2209	103823	4879681	26751309.6
2004Q4	48	587564.8	2304	110592	5308416	28203110.4
2005Q1	49	584631.3	2401	117649	5764801	28646933.7
2005Q2	50	589489.7	2500	125000	6250000	29474485
2005Q3	51	582149.8	2601	132651	6765201	29689639.8
2005Q4	52	599177.5	2704	140608	7311616	31157230
2006Q1	53	597108	2809	148877	7890481	31646724
2006Q2	54	604796.4	2916	157464	8503056	32659005.6
2006Q3	55	606284.6	3025	166375	9150625	33345653
2006Q4	56	630641.9	3136	175616	9834496	35315946.4
2007Q1	57	636801.4	3249	185193	10556001	36297679.8
2007Q2			0			
2007Q3			0			
2007Q4			0			
sumace	1653	26961516.7	63365	2732409	125678141	903228402

$X^T X =$	57	1653	63365
	1653	63365	2732409
	63365	2732409	125678141

$\text{adj}(X^T X) =$

$\det(X^T X) = 2.93506E+12$

$(X^T X)^{-1}$	0.169514696	-0.011790841	0.000170882
	-0.011790841	0.00107273	-1.73778E-05
	0.000170882	-1.73778E-05	2.99617E-07

$X^T y =$	26961516.7
	903228402.2
	36246459825

b1	114409.542
b2	21137.25932
b3	-228.8284836

t ² *yt	skutečnost	vyrovnání	rezidua	abs.rezidua	rezidua ²
179342.9	179342.9	135318.0	44024.9	44024.92712	1938194208
719518.4	179879.6	155768.7	24110.9	24110.85325	581333244
1657421.1	184157.9	175761.9	8396.0	8396.03634	70493426.2
3276523.2	204782.7	195297.3	9485.4	9485.3764	89972365.5
5378632.5	215145.3	214375.1	770.2	770.1734273	593167.108
7924334.4	220120.4	232995.3	-12874.9	12874.87258	165762344
11018022.4	224857.6	251157.8	-26300.2	26300.16162	691698501
15647929.6	244498.9	268862.6	-24363.7	24363.69369	593589570
20818085.4	257013.4	286109.8	-29096.4	29096.36879	846598677
26825160	268251.6	302899.3	-34647.7	34647.68693	1200462210
33965631.7	280707.7	319231.1	-38523.4	38523.4481	1484056054
44098113.6	306236.9	335105.4	-28868.5	28868.4523	833387538
54223413.4	320848.6	350521.9	-29673.3	29673.29954	880504706
64600639.6	329595.1	365480.8	-35885.7	35885.68981	1287782733
75625267.5	336112.3	379982.0	-43869.7	43869.72311	1924552606
93600051.2	365625.2	394025.6	-28400.4	28400.39945	806582689
119888788.9	414840.1	407611.5	7228.6	7228.581186	52252386
142943292	441183	420739.8	20443.2	20443.21878	417925194
160157325.1	443649.1	433410.4	10238.7	10238.71335	104831251
189568600	473921.5	445623.3	28298.2	28298.16489	800786136
217583711.1	493387.1	457378.6	36008.5	36008.47339	1296610156
247843719.2	512073.8	468676.3	43397.5	43397.53885	1883346379
279022002.2	527451.8	479516.2	47935.6	47935.56129	2297818036
316653408	549745.5	489898.6	59846.9	59846.94069	3581656310
349777750	559644.4	499823.2	59821.2	59821.17706	3578573225
374886142.8	554565.3	509290.2	45275.1	45275.0704	2049831999
395416452.6	542409.4	518299.6	24109.8	24109.8207	581283454
420956020.8	536933.7	526851.3	10082.4	10082.42797	101655354
461015175	548175	534945.3	13229.7	13229.69221	175024756
489055860	543395.4	542581.7	813.7	813.7134112	662129.516
526319422.9	547678.9	549760.4	-2081.5	2081.508417	4332677.29
562332569.6	549152.9	556481.5	-7328.6	7328.573278	53707986.3
619378442.1	568758.9	562744.9	6014.0	6014.018828	36168422.5
674173651.2	583195.2	568550.6	14644.6	14644.5679	214463369
722352977.5	589675.9	573898.7	15777.2	15777.17394	248919218
772378286.4	595970.9	578789.2	17181.7	17181.73695	295212085
816658468.5	596536.5	583221.9	13314.6	13314.55692	177277426
857960253.2	594155.3	587197.1	6958.2	6958.233863	48417018.5
883192377.6	580665.6	590714.5	-10048.9	10048.93223	100981039
907737280	567335.8	593774.3	-26438.5	26438.54135	698996469
942539221.5	560701.5	596376.5	-35675.0	35674.99351	1272705162
976776721.2	553728.3	598521.0	-44792.7	44792.6887	2006384961
1014085344	548450.7	600207.8	-51757.1	51757.12692	2678800187

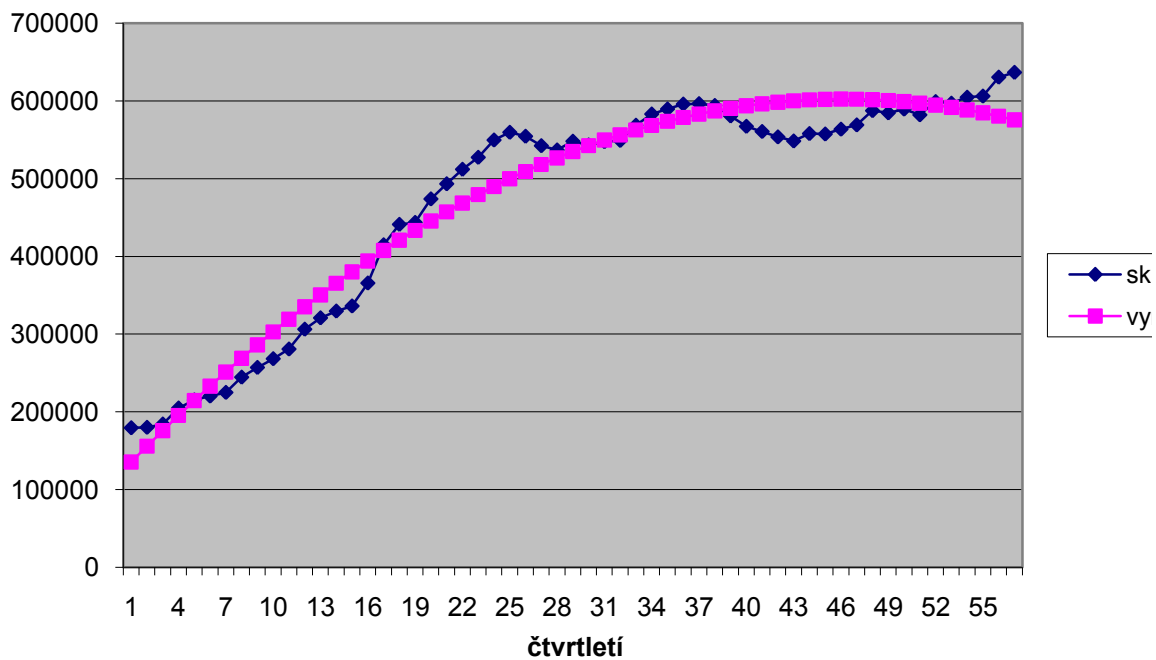
1080338723	558026.2	601437.0	-43410.8	43410.80818	1884498267
1128821063	557442.5	602208.5	-44766.0	44766.03247	2003997663
1192721911	563668.2	602522.4	-38854.2	38854.19979	1509648841
1257311551	569176.8	602378.6	-33201.8	33201.81014	1102360197
1353749299	587564.8	601777.2	-14212.4	14212.36353	201991277
1403699751	584631.3	600718.1	-16086.8	16086.75995	258783846
1473724250	589489.7	599201.3	-9711.6	9711.599406	94315163
1514171630	582149.8	597226.9	-15077.1	15077.08189	227318398
1620175960	599177.5	594794.8	4382.7	4382.692589	19207994.3
1677276372	597108	591905.1	5202.9	5202.924037	27070418.5
1763586302	604796.4	588557.7	16238.7	16238.71245	263695782
1834010915	606284.6	584752.6	21532.0	21531.95783	463625208
1977692998	630641.9	580489.9	50152.0	50151.96018	2515219110
2068967749	636801.4	575769.6	61031.8	61031.8195	3724882991
0				0	0
0				0	0
0				0	0
36246459825	26961516.7	26961516.7	-6.5542E-08	1451893.6	5.2451E+10

4.97536E+11	3.461E+10	501548852
34606870788	3.149E+09	51004968
501548852	51004968	879396

THEILovoU	0.11603
-----------	---------

APE	AAPE
0.2455	0.139912
0.1340	0.071834
0.0456	0.023328
0.0463	0.023709
0.0036	0.001793
0.0585	0.028414

vyrovnání kvadratickým trendem



0.0816	0.042558
0.0444	0.02273
0.0188	0.009478
0.0241	0.012214
0.0015	0.000749
0.0038	0.001897
0.0133	0.006628
0.0106	0.005315
0.0251	0.012715
0.0268	0.013559
0.0288	0.014626
0.0223	0.011286
0.0117	0.00589
0.0173	0.008579
0.0466	0.02277
0.0636	0.030832
0.0809	0.038874
0.0944	0.045059

0.0778	0.03744
0.0803	0.038603
0.0689	0.033317
0.0583	0.02834
0.0242	0.01195
0.0275	0.013571
0.0165	0.00817
0.0259	0.012784
0.0073	0.003671
0.0087	0.004376
0.0268	0.013608
0.0355	0.018078
0.0795	0.041409
0.0958	0.050333
0.0613	0.0307

utečnost
rovnání

čtvrtletí	pořadí	hodnota	t ²	t*yt
1993Q1	1	179342.9	1	179342.9
1993Q2	2	179879.6	4	359759.2
1993Q3	3	184157.9	9	552473.7
1993Q4	4	204782.7	16	819130.8
1994Q1	5	215145.3	25	1075726.5
1994Q2	6	220120.4	36	1320722.4
1994Q3	7	224857.6	49	1574003.2
1994Q4	8	244498.9	64	1955991.2
1995Q1	9	257013.4	81	2313120.6
1995Q2	10	268251.6	100	2682516
1995Q3	11	280707.7	121	3087784.7
1995Q4	12	306236.9	144	3674842.8
1996Q1	13	320848.6	169	4171031.8
1996Q2	14	329595.1	196	4614331.4
1996Q3	15	336112.3	225	5041684.5
1996Q4	16	365625.2	256	5850003.2
1997Q1	17	414840.1	289	7052281.7
1997Q2	18	441183	324	7941294
1997Q3	19	443649.1	361	8429332.9
1997Q4	20	473921.5	400	9478430
1998Q1	21	493387.1	441	10361129.1
1998Q2	22	512073.8	484	11265623.6
1998Q3	23	527451.8	529	12131391.4
1998Q4	24	549745.5	576	13193892
1999Q1	25	559644.4	625	13991110
1999Q2	26	554565.3	676	14418697.8
1999Q3	27	542409.4	729	14645053.8
1999Q4	28	536933.7	784	15034143.6
2000Q1	29	548175	841	15897075
2000Q2	30	543395.4	900	16301862
2000Q3	31	547678.9	961	16978045.9
2000Q4	32	549152.9	1024	17572892.8
2001Q1	33	568758.9	1089	18769043.7
2001Q2	34	583195.2	1156	19828636.8
2001Q3	35	589675.9	1225	20638656.5
2001Q4	36	595970.9	1296	21454952.4
2002Q1	37	596536.5	1369	22071850.5
2002Q2	38	594155.3	1444	22577901.4
2002Q3	39	580665.6	1521	22645958.4
2002Q4	40	567335.8	1600	22693432
2003Q1	41	560701.5	1681	22988761.5
2003Q2	42	553728.3	1764	23256588.6
2003Q3	43	548450.7	1849	23583380.1

skutečnost	vyrovnání
179342.9	252783.3
179879.6	260648.5
184157.9	268513.7
204782.7	276378.9
215145.3	284244.1
220120.4	292109.3
224857.6	299974.5
244498.9	307839.7
257013.4	315704.9
268251.6	323570.1
280707.7	331435.3
306236.9	339300.5
320848.6	347165.7
329595.1	355031.0
336112.3	362896.2
365625.2	370761.4
414840.1	378626.6
441183	386491.8
443649.1	394357.0
473921.5	402222.2
493387.1	410087.4
512073.8	417952.6
527451.8	425817.8
549745.5	433683.0
559644.4	441548.2
554565.3	449413.4
542409.4	457278.7
536933.7	465143.9
548175	473009.1
543395.4	480874.3
547678.9	488739.5
549152.9	496604.7
568758.9	504469.9
583195.2	512335.1
589675.9	520200.3
595970.9	528065.5
596536.5	535930.7
594155.3	543795.9
580665.6	551661.1
567335.8	559526.3
560701.5	567391.6
553728.3	575256.8
548450.7	583122.0

2003Q4	44	558026.2	1936	24553152.8
2004Q1	45	557442.5	2025	25084912.5
2004Q2	46	563668.2	2116	25928737.2
2004Q3	47	569176.8	2209	26751309.6
2004Q4	48	587564.8	2304	28203110.4
2005Q1	49	584631.3	2401	28646933.7
2005Q2	50	589489.7	2500	29474485
2005Q3	51	582149.8	2601	29689639.8
2005Q4	52	599177.5	2704	31157230
2006Q1	53	597108	2809	31646724
2006Q2	54	604796.4	2916	32659005.6
2006Q3	55	606284.6	3025	33345653
2006Q4	56	630641.9	3136	35315946.4
2007Q1	57	636801.4	3249	36297679.8
2007Q2			0	0
2007Q3			0	0
2007Q4			0	0
sumace	1653	26961517	63365	903228402

558026.2	590987.2
557442.5	598852.4
563668.2	606717.6
569176.8	614582.8
587564.8	622448.0
584631.3	630313.2
589489.7	638178.4
582149.8	646043.6
599177.5	653908.8
597108	661774.0
604796.4	669639.2
606284.6	677504.5
630641.9	685369.7
636801.4	693234.9
26961517	26961516.7

$X^T X =$	57	1653
	1653	63365

THEILovoU	0.17528
-----------	---------

$\det(X^T X)$	879396
---------------	--------

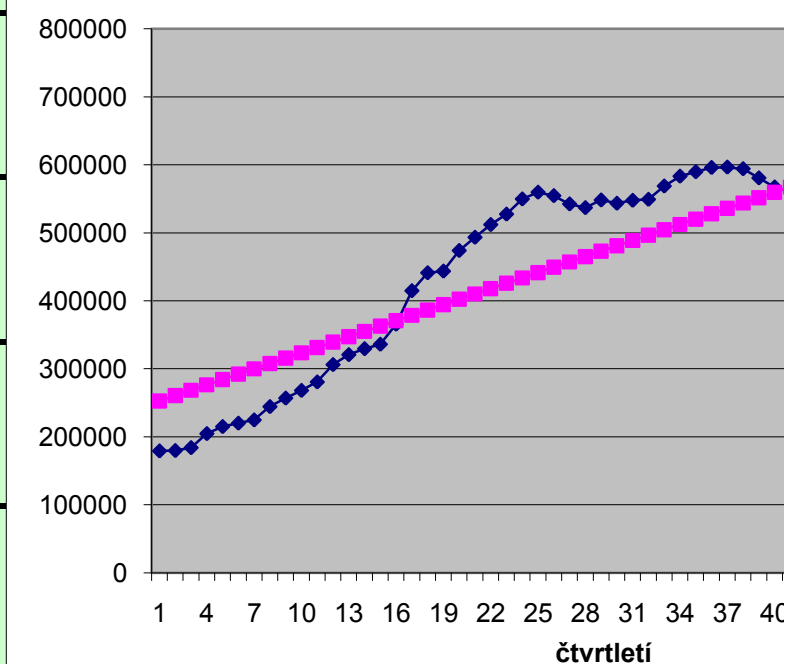
$(X^T X)^{-1}$	0.072055	-0.00188
	-0.00188	6.48E-05

$X^T y =$	26961517
	9.03E+08

b1	244918.1
b2	7865.207

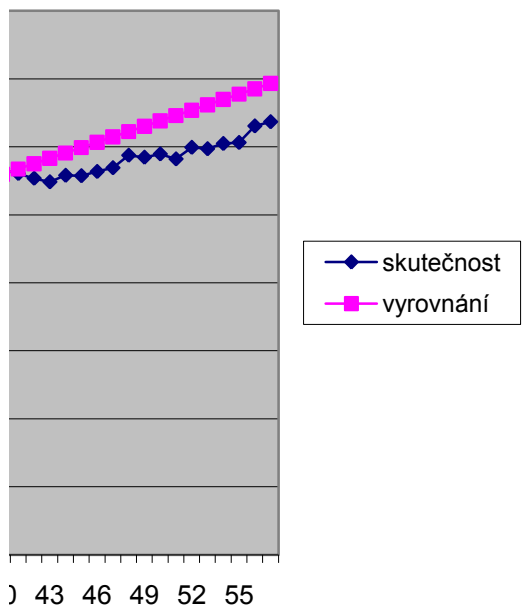
rezidua	abs.rezidua	rezidua ²	APE	AAPE
-73440.4	73440.361	5393486639	0.4095	0.169951
-80768.9	80768.868	6523610099	0.4490	0.183346
-84355.8	84355.776	7115896887	0.4581	0.186351
-71596.2	71596.183	5126013411	0.3496	0.148799
-69098.8	69098.79	4774642809	0.3212	0.138367
-71988.9	71988.897	5182401363		
-75116.9	75116.905	5642549383		
-63340.8	63340.812	4012058472		
-58691.5	58691.519	3444694442		
-55318.5	55318.527	3060139386		
-50727.6	50727.634	2573292840		
-33063.6	33063.641	1093204367		
-26317.1	26317.148	692592302		
-25435.9	25435.856	646982757		
-26783.9	26783.863	717375318		
-5136.2	5136.1703	26380245.2		
36213.5	36213.522	1311419207		
54691.2	54691.215	2991129015		
49292.1	49292.108	2429711899		
71699.3	71699.301	5140789706		
83299.7	83299.693	6938838907		
94121.2	94121.186	8858797662		
101634.0	101633.98	1.0329E+10		
116062.5	116062.47	1.347E+10		
118096.2	118096.16	1.3947E+10		
105151.9	105151.86	1.1057E+10	0.1896	0.104735
85130.7	85130.75	7247244535	0.1569	0.085157
71789.8	71789.842	5153781467	0.1337	0.071641
75165.9	75165.935	5649917798	0.1371	0.073607
62521.1	62521.128	3908891422	0.1151	0.06104
58939.4	58939.421	3473855292	0.1076	0.056868
52548.2	52548.213	2761314716	0.0957	0.050249
64289.0	64289.006	4133076289	0.1130	0.059902
70860.1	70860.099	5021153587	0.1215	0.064681
69475.6	69475.591	4826857802	0.1178	0.062598
67905.4	67905.384	4611141195	0.1139	0.060412
60605.8	60605.777	3673060188	0.1016	0.053517
50359.4	50359.37	2536066104	0.0848	0.044254
29004.5	29004.462	841258833	0.0500	0.025615
7809.5	7809.455	60987587.7	0.0138	0.00693
-6690.1	6690.0523	44756799.2	0.0119	0.00593
-21528.5	21528.46	463474570	0.0389	0.019069
-34671.3	34671.267	1202096743	0.0632	0.03064

vyrovnání lineárním tre



-32961.0	32960.974	1086425813	0.0591	0.028686
-41409.9	41409.881	1714778276	0.0743	0.035813
-43049.4	43049.389	1853249864	0.0764	0.036782
-45406.0	45405.996	2061704467	0.0798	0.038357
-34883.2	34883.203	1216837866	0.0594	0.028829
-45681.9	45681.91	2086836946	0.0781	0.0376
-48688.7	48688.718	2370591238	0.0826	0.03966
-63893.8	63893.825	4082420879	0.1098	0.052023
-54731.3	54731.332	2995518738	0.0913	0.043677
-64666.0	64666.04	4181696679	0.1083	0.051368
-64842.8	64842.847	4204594792	0.1072	0.05088
-71219.9	71219.854	5072267627	0.1175	0.055476
-54727.8	54727.761	2995127873	0.0868	0.041586
-56433.5	56433.469	3184736392	0.0886	0.04243
	0	0		
	0	0		
	0	0		
2.64E-08	3313331.9	2.2722E+11	0.1458	0.0699

ndem



čtvrtletí	pořadí	ln(pořadí)	hodnota	=t^2	t*yt	skutečnost
1993Q1	1	0	179342.9	0	0	179342.9
1993Q2	2	0.693147	179879.6	0.480453014	124683	179879.6
1993Q3	3	1.098612	184157.9	1.206948961	202318.1	184157.9
1993Q4	4	1.386294	204782.7	1.921812056	283889.1	204782.7
1994Q1	5	1.609438	215145.3	2.590290394	346263	215145.3
1994Q2	6	1.791759	220120.4	3.210401996	394402.8	220120.4
1994Q3	7	1.94591	224857.6	3.786566308	437552.7	224857.6
1994Q4	8	2.079442	244498.9	4.324077125	508421.2	244498.9
1995Q1	9	2.197225	257013.4	4.827795843	564716.2	257013.4
1995Q2	10	2.302585	268251.6	5.30189811	617672.1	268251.6
1995Q3	11	2.397895	280707.7	5.749901739	673107.7	280707.7
1995Q4	12	2.484907	306236.9	6.174761058	760970.1	306236.9
1996Q1	13	2.564949	320848.6	6.578965206	822960.4	320848.6
1996Q2	14	2.639057	329595.1	6.964623589	869820.4	329595.1
1996Q3	15	2.70805	336112.3	7.333535892	910209	336112.3
1996Q4	16	2.772589	365625.2	7.687248223	1013728	365625.2
1997Q1	17	2.833213	414840.1	8.027097853	1175331	414840.1
1997Q2	18	2.890372	441183	8.354248899	1275183	441183
1997Q3	19	2.944439	443649.1	8.669720902	1306298	443649.1
1997Q4	20	2.995732	473921.5	8.974411855	1419742	473921.5
1998Q1	21	3.044522	493387.1	9.269116874	1502128	493387.1
1998Q2	22	3.091042	512073.8	9.554543448	1582842	512073.8
1998Q3	23	3.135494	527451.8	9.831323978	1653822	527451.8
1998Q4	24	3.178054	549745.5	10.10002615	1747121	549745.5
1999Q1	25	3.218876	559644.4	10.36116158	1801426	559644.4
1999Q2	26	3.258097	554565.3	10.61519305	1806827	554565.3
1999Q3	27	3.295837	542409.4	10.86254065	1787693	542409.4
1999Q4	28	3.332205	536933.7	11.1035869	1789173	536933.7
2000Q1	29	3.367296	548175	11.33868121	1845867	548175
2000Q2	30	3.401197	543395.4	11.56814363	1848195	543395.4
2000Q3	31	3.433987	547678.9	11.79226812	1880722	547678.9
2000Q4	32	3.465736	549152.9	12.01132535	1903219	549152.9
2001Q1	33	3.496508	568758.9	12.22556513	1988670	568758.9
2001Q2	34	3.526361	583195.2	12.43521855	2056557	583195.2
2001Q3	35	3.555348	589675.9	12.64049984	2096503	589675.9
2001Q4	36	3.583519	595970.9	12.84160798	2135673	595970.9
2002Q1	37	3.610918	596536.5	13.03872817	2154044	596536.5
2002Q2	38	3.637586	594155.3	13.23203307	2161291	594155.3
2002Q3	39	3.663562	580665.6	13.42168393	2127304	580665.6
2002Q4	40	3.688879	567335.8	13.60783163	2092833	567335.8
2003Q1	41	3.713572	560701.5	13.79061749	2082205	560701.5
2003Q2	42	3.73767	553728.3	13.97017418	2069653	553728.3
2003Q3	43	3.7612	548450.7	14.14662631	2062833	548450.7

2003Q4	44	3.78419	558026.2	14.32009119	2111677	558026.2
2004Q1	45	3.806662	557442.5	14.49067931	2121995	557442.5
2004Q2	46	3.828641	563668.2	14.65849494	2158083	563668.2
2004Q3	47	3.850148	569176.8	14.82363655	2191415	569176.8
2004Q4	48	3.871201	587564.8	14.98619727	2274581	587564.8
2005Q1	49	3.89182	584631.3	15.14626523	2275280	584631.3
2005Q2	50	3.912023	589489.7	15.30392399	2306097	589489.7
2005Q3	51	3.931826	582149.8	15.45925281	2288912	582149.8
2005Q4	52	3.951244	599177.5	15.61232692	2367496	599177.5
2006Q1	53	3.970292	597108	15.76321788	2370693	597108
2006Q2	54	3.988984	604796.4	15.91199372	2412523	604796.4
2006Q3	55	4.007333	606284.6	16.05871926	2429584	606284.6
2006Q4	56	4.025352	630641.9	16.20345623	2538555	630641.9
2007Q1	57	4.043051	636801.4	16.34626355	2574621	636801.4
2007Q2				0	0	
2007Q3				0	0	
2007Q4				0	0	
sumace	1653	176.3958	26961516.7	591.0077751	90305383	26961516.7

$$X'X = \begin{bmatrix} 57 & 176.3958484 \\ 176.3958484 & 591.0077751 \end{bmatrix}$$

THEILOvoU

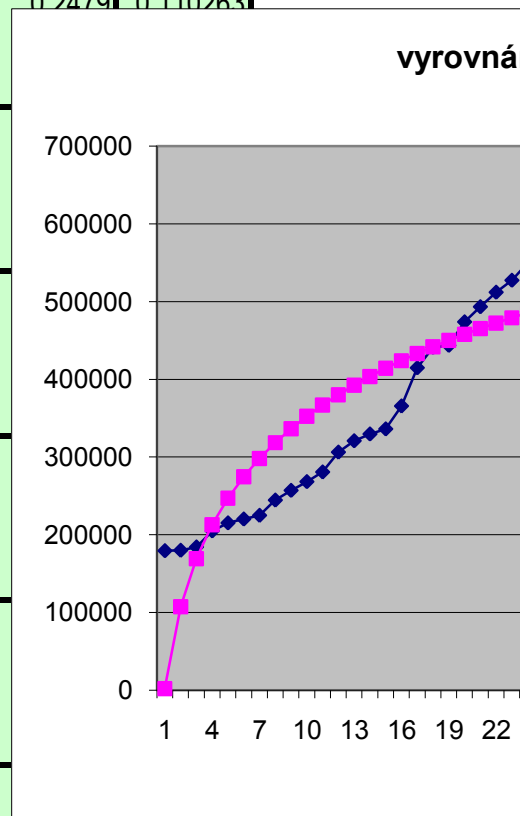
$$\det(X'X) = 2571.947845$$

$$(X'X)^{-1} = \begin{bmatrix} 0.22978995 & -0.06858454 \\ -0.06858454 & 0.02216219 \end{bmatrix}$$

$$X'y = \begin{bmatrix} 26961517 \\ 90305383 \end{bmatrix}$$

$$\begin{bmatrix} b1 \\ b2 \end{bmatrix} = \begin{bmatrix} 1932.882 \\ 152222.077 \end{bmatrix}$$

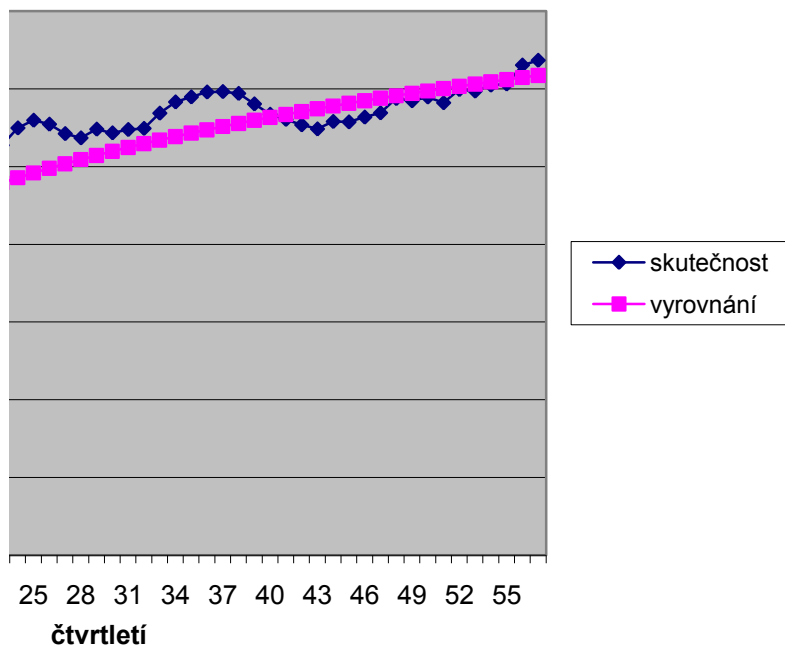
vyrovnání	rezidua	abs.rezidua	rezidua^2	APE	AAPE
1932.9	177410.0	177410.018	31474314659	0.9892	0.978675
107445.2	72434.4	72434.4149	5246744456	0.4027	0.252099
169165.9	14992.0	14991.9739	224759280.5	0.0814	0.042431
212957.5	-8174.8	8174.78877	66827171.46	0.0399	0.019569
246924.9	-31779.6	31779.5637	1009940667	0.1477	0.068776
274678.2	-54557.8	54557.8298	2976556788	0.2479	0.110263
298143.4	-73285.8	73285.7664	5370803563		
318469.8	-73970.9	73970.8924	5471692923		
336399.0	-79385.6	79385.5707	6302068843		
352437.2	-84185.6	84185.5673	7087209741		
366945.5	-86237.8	86237.7808	7436954845		
380190.5	-73953.6	73953.6334	5469139891		
392374.8	-71526.2	71526.2006	5115997375		
403655.7	-74060.6	74060.5701	5484968040		
414157.9	-78045.6	78045.6083	6091116972		
423982.1	-58356.9	58356.896	3405527314		
433210.5	-18370.4	18370.4019	337471665.7		
441911.3	-728.3	728.274377	530383.5678		
450141.5	-6492.4	6492.39911	42151246.16		
457949.5	15972.0	15972.0291	255105712.8		
465376.4	28010.7	28010.6889	784598694.8		
472457.8	39616.0	39616.0155	1569428686		
479224.3	48227.5	48227.4759	2325889431		
485702.8	64042.7	64042.663	4101462682		
491916.8	67727.6	67727.5542	4587021595		
497887.1	56678.2	56678.1958	3212417874	0.1022	0.053633
503632.0	38777.4	38777.3846	1503685559	0.0715	0.037071
509168.0	27765.7	27765.7263	770935556.8	0.0517	0.026542
514509.6	33665.4	33665.3527	1133355973	0.0614	0.03168
519670.2	23725.2	23725.1881	562884549.8	0.0437	0.022318
524661.5	23017.4	23017.3531	529798545.9	0.0420	0.021465
529494.4	19658.5	19658.5003	386456635.6	0.0358	0.018225
534178.5	34580.4	34580.3745	1195802303	0.0608	0.031353
538722.8	44472.4	44472.3945	1977793871	0.0763	0.03964
543135.3	46540.6	46540.5514	2166022925	0.0789	0.041084
547423.6	48547.3	48547.322	2356842473	0.0815	0.042459
551594.3	44942.2	44942.1932	2019800732	0.0753	0.039144
555653.8	38501.5	38501.4973	1482365292	0.0648	0.033485
559607.8	21057.8	21057.7548	443429035.8	0.0363	0.018467
563461.8	3874.0	3874.02545	15008073.16	0.0068	0.003426
567220.5	-6519.0	6519.03533	42497821.69	0.0116	0.00578
570888.7	-17160.4	17160.4147	294479832.4	0.0310	0.015259
574470.6	-26019.9	26019.8759	677033941	0.0474	0.023172



577970.1	-19943.9	19943.8881	397758672.6	0.0357	0.017556
581391.0	-23948.5	23948.4529	573528396.3	0.0430	0.021029
584736.6	-21068.4	21068.4277	443878647.3	0.0374	0.018346
588010.3	-18833.5	18833.547	354702491.4	0.0331	0.016275
591215.1	-3650.3	3650.34065	13324986.84	0.0062	0.003097
594353.9	-9722.6	9722.55138	94528005.25	0.0166	0.008247
597429.1	-7939.4	7939.44945	63034857.55	0.0135	0.006689
600443.5	-18293.7	18293.7465	334661161.4	0.0314	0.015469
603399.4	-4221.9	4221.90787	17824506.1	0.0070	0.003511
606299.0	-9191.0	9190.96368	84473813.36	0.0154	0.007637
609144.3	-4347.9	4347.91899	18904399.58	0.0072	0.003582
611937.5	-5652.9	5652.863	31954860.06	0.0093	0.00464
614680.3	15961.6	15961.6227	254773398.2	0.0253	0.012817
617374.5	19426.9	19426.8563	377402744.8	0.0305	0.01549
		0	0		
		0	0		
		0	0		
26961516.7	-1.892E-08	2.1393E+06	1.3607E+11	0.1122	0.0628

0.14084

ní logaritmickým trendem



čtvrtletí	pořadí	hodnota
1993Q1	1	179342.9
1993Q2	2	179879.6
1993Q3	3	184157.9
1993Q4	4	204782.7
1994Q1	5	215145.3
1994Q2	6	220120.4
1994Q3	7	224857.6
1994Q4	8	244498.9
1995Q1	9	257013.4
1995Q2	10	268251.6
1995Q3	11	280707.7
1995Q4	12	306236.9
1996Q1	13	320848.6
1996Q2	14	329595.1
1996Q3	15	336112.3
1996Q4	16	365625.2
1997Q1	17	414840.1
1997Q2	18	441183
1997Q3	19	443649.1
1997Q4	20	473921.5
1998Q1	21	493387.1
1998Q2	22	512073.8
1998Q3	23	527451.8
1998Q4	24	549745.5
1999Q1	25	559644.4
1999Q2	26	554565.3
1999Q3	27	542409.4
1999Q4	28	536933.7
2000Q1	29	548175
2000Q2	30	543395.4
2000Q3	31	547678.9
2000Q4	32	549152.9
2001Q1	33	568758.9
2001Q2	34	583195.2
2001Q3	35	589675.9
2001Q4	36	595970.9
2002Q1	37	596536.5
2002Q2	38	594155.3
2002Q3	39	580665.6
2002Q4	40	567335.8
2003Q1	41	560701.5
2003Q2	42	553728.3
2003Q3	43	548450.7

2003Q4	44	558026.2
2004Q1	45	557442.5
2004Q2	46	563668.2
2004Q3	47	569176.8
2004Q4	48	587564.8
2005Q1	49	584631.3
2005Q2	50	589489.7
2005Q3	51	582149.8
2005Q4	52	599177.5
2006Q1	53	597108
2006Q2	54	604796.4
2006Q3	55	606284.6
2006Q4	56	630641.9
2007Q1	57	636801.4
2007Q2	58	
2007Q3	59	
2007Q4	60	

trendová funkce		ME	ME	SSE	MAE
1	lineární trend	2.64000E-08	3.3133E+06	2.2722E+11	5.8129E+04
2	kvadratický trend	-6.55420E-08	1.4519E+06	5.2451E+10	2.5472E+04
3	kubický trend	4.58087E+01	1.3853E+06	4.8678E+10	2.4304E+04
5	bikvadratický trend	-4.10581E+00	7.5257E+05	1.4670E+10	1.3203E+04
6	mocninný trend	1.59603E+05	2.3029E+06	1.1201E+11	4.0403E+04
7	logaritmický trend	-1.89200E-08	2.1393E+06	1.3607E+11	3.7532E+04
8	exponenciální trend	2.22417E+05	4.3553E+06	4.2900E+11	7.6409E+04
9	modifik.expon.trend	3.53080E+01	2.3056E+06	2.3929E+11	4.0449E+04
9	logistický trend	-4.15341E+05	1.3607E+06	5.1243E+10	2.3872E+04
10	Gompertzův trend	-3.98515E+05	1.6475E+06	8.1573E+10	2.8903E+04

MSE	RMSE	MAPE	AMAPE	THEIL' U	
3.9863E+09	63137.28	14.58	4.8	0.1753	
9.2019E+08	30334.68	6.13	3.07	0.1160	
8.5400E+08	29223.28	6.42	3.25	0.1133	
2.5737E+08	16042.71	2.86	2.86	0.0835	
1.9651E+09	44329.31	9.57	6.99	0.1464	
2.3872E+09	48858.91	11.22	6.28	0.1408	
7.5263E+09	86754.34	17.04	8.42	0.2014	
4.1981E+09	64792.52	14.38	13.85	0.1462	
8.9900E+08	29983.33	6.53	3.22	0.1119	
1.4311E+09	37829.85	8.7	4.51	0.1231	

čtvrtletí	pořadí	hodnota	čtvrtletí	pořadí	hodnota	čtvrtletí	pořadí
1993Q1	1	5.57591E-06	1997Q4	20	2.11005E-06	2002Q3	39
1993Q2	2	5.55927E-06	1998Q1	21	2.02681E-06	2002Q4	40
1993Q3	3	5.43012E-06	1998Q2	22	1.95284E-06	2003Q1	41
1993Q4	4	4.88322E-06	1998Q3	23	1.89591E-06	2003Q2	42
1994Q1	5	4.64802E-06	1998Q4	24	1.81902E-06	2003Q3	43
1994Q2	6	4.54297E-06	1999Q1	25	1.78685E-06	2003Q4	44
1994Q3	7	4.44726E-06	1999Q2	26	1.80321E-06	2004Q1	45
1994Q4	8	4.09E-06	1999Q3	27	1.84363E-06	2004Q2	46
1995Q1	9	3.89085E-06	1999Q4	28	1.86243E-06	2004Q3	47
1995Q2	10	3.72784E-06	2000Q1	29	1.82423E-06	2004Q4	48
1995Q3	11	3.56242E-06	2000Q2	30	1.84028E-06	2005Q1	49
1995Q4	12	3.26545E-06	2000Q3	31	1.82589E-06	2005Q2	50
1996Q1	13	3.11673E-06	2000Q4	32	1.82099E-06	2005Q3	51
1996Q2	14	3.03403E-06	2001Q1	33	1.75821E-06	2005Q4	52
1996Q3	15	2.9752E-06	2001Q2	34	1.71469E-06	2006Q1	53
1996Q4	16	2.73504E-06	2001Q3	35	1.69585E-06	2006Q2	54
1997Q1	17	2.41057E-06	2001Q4	36	1.67793E-06	2006Q3	55
1997Q2	18	2.26663E-06	2002Q1	37	1.67634E-06	2006Q4	56
1997Q3	19	2.25403E-06	2002Q2	38	1.68306E-06	2007Q1	57
		7.24156E-05			3.46182E-05		

parametr	b=	0.052242153	0.856105771
parametr	a=	-0.187120416	7.07265E-06
parametr	c=	3.98808E-05	1.71236E-06

hodnota
1.72216E-06
1.76262E-06
1.78348E-06
1.80594E-06
1.82332E-06
1.79203E-06
1.79391E-06
1.77409E-06
1.75692E-06
1.70194E-06
1.71048E-06
1.69638E-06
1.71777E-06
1.66895E-06
1.67474E-06
1.65345E-06
1.64939E-06
1.58569E-06
1.57035E-06
3.26436E-05

hodnota	hodnota	hodnota
179342.9	473921.5	580665.6
179879.6	493387.1	567335.8
184157.9	512073.8	560701.5
204782.7	527451.8	553728.3
215145.3	549745.5	548450.7
220120.4	559644.4	558026.2
224857.6	554565.3	557442.5
244498.9	542409.4	563668.2
257013.4	536933.7	569176.8
268251.6	548175	587564.8
280707.7	543395.4	584631.3
306236.9	547678.9	589489.7
320848.6	549152.9	582149.8
329595.1	568758.9	599177.5
336112.3	583195.2	597108
365625.2	589675.9	604796.4
414840.1	595970.9	606284.6
441183	596536.5	630641.9
443649.1	594155.3	636801.4
5416848	10466827	11077841

čtvrtletí	pořadí	hodnota	=xt ²	xt*yt
1993Q1	1	12.09705	1	12.09705
1993Q2	2	12.10004	4	24.20009
1993Q3	3	12.12355	9	36.37065
1993Q4	4	12.2297	16	48.91882
1994Q1	5	12.27907	25	61.39534
1994Q2	6	12.30193	36	73.81158
1994Q3	7	12.32322	49	86.26256
1994Q4	8	12.40697	64	99.25573
1995Q1	9	12.45688	81	112.112
1995Q2	10	12.49968	100	124.9968
1995Q3	11	12.54507	121	137.9958
1995Q4	12	12.63211	144	151.5854
1996Q1	13	12.67872	169	164.8234
1996Q2	14	12.70562	196	177.8787
1996Q3	15	12.7252	225	190.878
1996Q4	16	12.80936	256	204.9498
1997Q1	17	12.93565	289	219.906
1997Q2	18	12.99722	324	233.9499
1997Q3	19	13.00279	361	247.053
1997Q4	20	13.0688	400	261.3759
1998Q1	21	13.10905	441	275.29
1998Q2	22	13.14622	484	289.2169
1998Q3	23	13.17581	529	303.0437
1998Q4	24	13.21721	576	317.2131
1999Q1	25	13.23506	625	330.8764
1999Q2	26	13.22594	676	343.8744
1999Q3	27	13.20378	729	356.502
1999Q4	28	13.19363	784	369.4216
2000Q1	29	13.21435	841	383.2161
2000Q2	30	13.20559	900	396.1678
2000Q3	31	13.21344	961	409.6168
2000Q4	32	13.21613	1024	422.9162
2001Q1	33	13.25121	1089	437.29
2001Q2	34	13.27628	1156	451.3934
2001Q3	35	13.28733	1225	465.0565
2001Q4	36	13.29795	1296	478.7261
2002Q1	37	13.2989	1369	492.0591
2002Q2	38	13.2949	1444	505.206
2002Q3	39	13.27193	1521	517.6053
2002Q4	40	13.24871	1600	529.9483
2003Q1	41	13.23694	1681	542.7147
2003Q2	42	13.22443	1764	555.426
2003Q3	43	13.21485	1849	568.2387

skutečnost	vyrovnání	rezidua
179342.9	251841.7	-72498.8
179879.6	256994.6	-77115.0
184157.9	262252.8	-78094.9
204782.7	267618.7	-62836.0
215145.3	273094.4	-57949.1
220120.4	278682.0	-58561.6
224857.6	284384.1	-59526.5
244498.9	290202.8	-45703.9
257013.4	296140.5	-39127.1
268251.6	302199.7	-33948.1
280707.7	308382.9	-27675.2
306236.9	314692.6	-8455.7
320848.6	321131.5	-282.9
329595.1	327702.0	1893.1
336112.3	334407.0	1705.3
365625.2	341249.2	24376.0
414840.1	348231.4	66608.7
441183	355356.5	85826.5
443649.1	362627.3	81021.8
473921.5	370046.9	103874.6
493387.1	377618.3	115768.8
512073.8	385344.6	126729.2
527451.8	393229.0	134222.8
549745.5	401274.7	148470.8
559644.4	409485.1	150159.3
554565.3	417863.4	136701.9
542409.4	426413.2	115996.2
536933.7	435137.9	101795.8
548175	444041.1	104133.9
543395.4	453126.5	90268.9
547678.9	462397.7	85281.2
549152.9	471858.7	77294.2
568758.9	481513.2	87245.7
583195.2	491365.3	91829.9
589675.9	501419.0	88256.9
595970.9	511678.4	84292.5
596536.5	522147.6	74388.9
594155.3	532831.1	61324.2
580665.6	543733.2	36932.4
567335.8	554858.3	12477.5
560701.5	566211.1	-5509.6
553728.3	577796.2	-24067.9
548450.7	589618.3	-41167.6

2003Q4	44	13.23216	1936	582.2151
2004Q1	45	13.23111	2025	595.4002
2004Q2	46	13.24222	2116	609.1422
2004Q3	47	13.25195	2209	622.8415
2004Q4	48	13.28374	2304	637.6196
2005Q1	49	13.27874	2401	650.6581
2005Q2	50	13.28701	2500	664.3506
2005Q3	51	13.27448	2601	676.9986
2005Q4	52	13.30331	2704	691.7723
2006Q1	53	13.29985	2809	704.8922
2006Q2	54	13.31265	2916	718.8829
2006Q3	55	13.3151	3025	732.3308
2006Q4	56	13.35449	3136	747.8516
2007Q1	57	13.36421	3249	761.7601
2007Q2			0	0
2007Q3			0	0
2007Q4			0	0
sumace	1653	741.2093	63365	21807.55

558026.2	601682.2	-43656.0
557442.5	613993.1	-56550.6
563668.2	626555.8	-62887.6
569176.8	639375.5	-70198.7
587564.8	652457.6	-64892.8
584631.3	665807.3	-81176.0
589489.7	679430.1	-89940.4
582149.8	693331.7	-111181.9
599177.5	707517.7	-108340.2
597108	721994.0	-124886.0
604796.4	736766.5	-131970.1
606284.6	751841.2	-145556.6
630641.9	767224.4	-136582.5
636801.4	782922.3	-146120.9
26961516.7	26739100	222416.7047

$X'X=$	57	1653
	1653	63365

THEILovoU	0.20138
-----------	---------

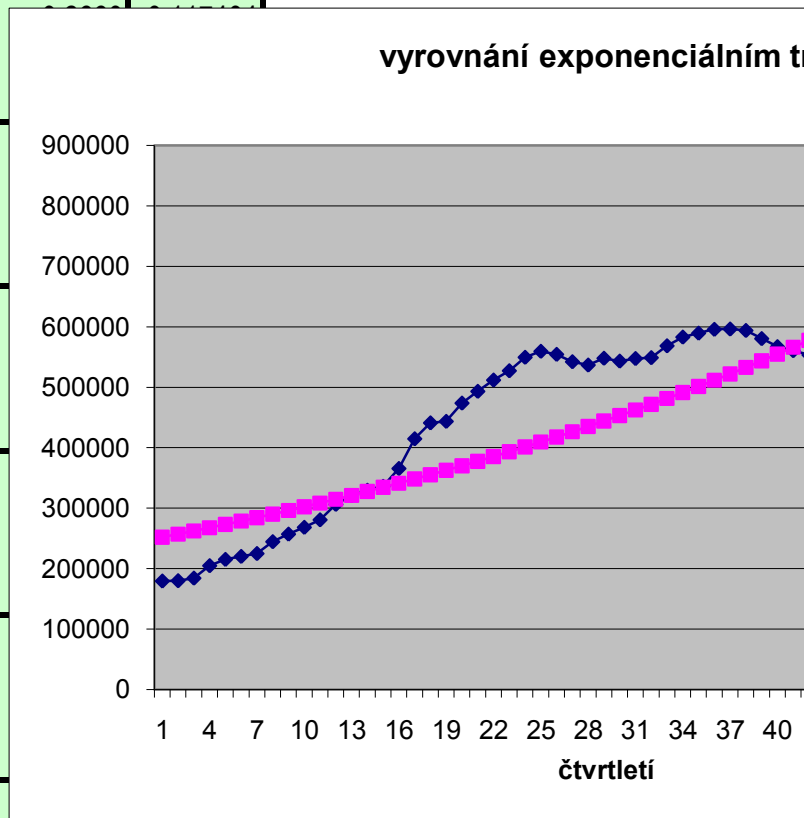
$\det(X'X)$	879396
-------------	--------

$(X'X)^{-1}$	0.072055	-0.00188
	-0.00188	6.48E-05

$X'y=$	741.2093
	21807.55

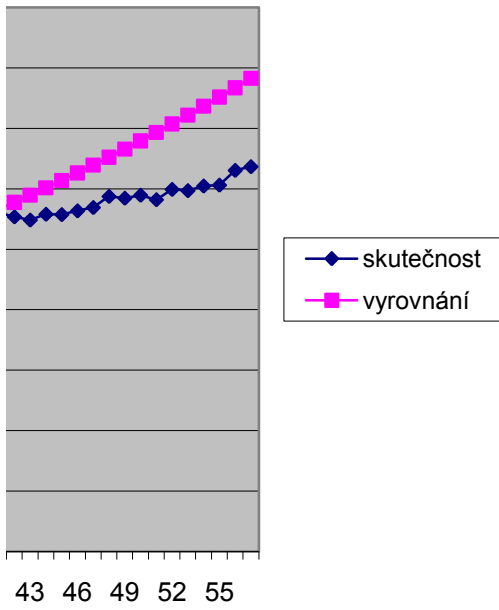
b1	12.4163
b2	0.020254

abs.rezidua	rezidua^2	APE	AAPE
72498.80	5256076246	0.4042	0.168139
77114.95	5946715532	0.4287	0.176515
78094.93	6098817975	0.4241	0.17494
62836.00	3948362428	0.3068	0.133014
57949.05	3358092685	0.2693	0.11869
58561.64	3429466180		
59526.46	3543399909		
45703.85	2088841970		
39127.09	1530929303		
33948.12	1152475039		
27675.23	765918342		
8455.75	71499695.4		
282.87	80015.3244		
1893.07	3583703.06		
1705.27	2907931.87		
24375.98	594188204		
66608.69	4436717618		
85826.54	7366195724		
81021.82	6564534566		
103874.62	1.079E+10		
115768.82	1.3402E+10		
126729.19	1.606E+10		
134222.79	1.8016E+10		
148470.76	2.2044E+10		
150159.31	2.2548E+10		
136701.88	1.8687E+10	0.2465	0.140578
115996.21	1.3455E+10	0.2139	0.119729
101795.82	1.0362E+10	0.1896	0.10472
104133.91	1.0844E+10	0.1900	0.104951
90268.93	8148480006	0.1661	0.090584
85281.16	7272876789	0.1557	0.08443
77294.20	5974393113	0.1408	0.075704
87245.66	7611804509	0.1534	0.08307
91829.88	8432726019	0.1575	0.085458
88256.91	7789282979	0.1497	0.080888
84292.55	7105233859	0.1414	0.0761
74388.87	5533704047	0.1247	0.066497
61324.18	3760655452	0.1032	0.054414
36932.40	1364002526	0.0636	0.032846
12477.46	155687073	0.0220	0.011119
5509.61	30355773.4	0.0098	0.004889
24067.86	579262009	0.0435	0.02127
41167.56	1694767643	0.0751	0.036173



43656.04	1905849542	0.0782	0.037644
56550.55	3197965246	0.1014	0.048275
62887.56	3954845248	0.1116	0.052837
70198.71	4927858498	0.1233	0.058085
64892.75	4211069606	0.1104	0.052332
81175.97	6589538013	0.1388	0.064918
89940.43	8089280633	0.1526	0.07088
111181.92	1.2361E+10	0.1910	0.087169
108340.25	1.1738E+10	0.1808	0.082912
124886.03	1.5597E+10	0.2092	0.094675
131970.11	1.7416E+10	0.2182	0.09837
145556.64	2.1187E+10	0.2401	0.107175
136582.51	1.8655E+10	0.2166	0.097708
146120.93	2.1351E+10	0.2295	0.102922
0.00	0		
0.00	0		
0.00	0		
4.3553E+06	4.2900E+11	0.1704	0.0842

rendem



čtvrtletí	pořadí	skutečnost	vyrovnání	rezidua	abs.rezidua	rezidua^2
1993Q1	1	179342.9	128744.9	50598.0	50597.98	2560155100
1993Q2	2	179879.6	145011.1	34868.5	34868.55	1215815564
1993Q3	3	184157.9	162598.3	21559.6	21559.62	464817055
1993Q4	4	204782.7	181436.9	23345.8	23345.78	545025490.8
1994Q1	5	215145.3	201414.9	13730.4	13730.35	188522615.6
1994Q2	6	220120.4	222377.6	-2257.2	2257.15	5094744.587
1994Q3	7	224857.6	244129.7	-19272.1	19272.08	371412884.9
1994Q4	8	244498.9	266441.8	-21942.9	21942.87	481489675.7
1995Q1	9	257013.4	289058.7	-32045.3	32045.28	1026900178
1995Q2	10	268251.6	311710.9	-43459.3	43459.28	1888709114
1995Q3	11	280707.7	334127.2	-53419.5	53419.46	2853638757
1995Q4	12	306236.9	356047.5	-49810.6	49810.58	2481094028
1996Q1	13	320848.6	377234.7	-56386.1	56386.11	3179393690
1996Q2	14	329595.1	397484.2	-67889.1	67889.08	4608926862
1996Q3	15	336112.3	416630.3	-80518.0	80517.97	6483143495
1996Q4	16	365625.2	434549.8	-68924.6	68924.63	4750604452
1997Q1	17	414840.1	451162.4	-36322.3	36322.30	1319309356
1997Q2	18	441183	466427.8	-25244.8	25244.83	637301476.7
1997Q3	19	443649.1	480341.9	-36692.8	36692.80	1346361441
1997Q4	20	473921.5	492930.7	-19009.2	19009.16	361348041
1998Q1	21	493387.1	504244.3	-10857.2	10857.16	117877852.2
1998Q2	22	512073.8	514350.8	-2277.0	2276.98	5184641.807
1998Q3	23	527451.8	523330.5	4121.3	4121.27	16984840.84
1998Q4	24	549745.5	531271.0	18474.5	18474.45	341305472.9
1999Q1	25	559644.4	538262.9	21381.5	21381.47	457167195.1
1999Q2	26	554565.3	544396.6	10168.7	10168.69	103402248.8
1999Q3	27	542409.4	549759.8	-7350.4	7350.45	54029079.23
1999Q4	28	536933.7	554436.0	-17502.3	17502.32	306331180.3
2000Q1	29	548175	558503.0	-10328.0	10327.98	106667244.1
2000Q2	30	543395.4	562032.4	-18637.0	18637.04	347339229.2
2000Q3	31	547678.9	565089.7	-17410.8	17410.76	303134614.2
2000Q4	32	549152.9	567733.5	-18580.6	18580.62	345239297.8
2001Q1	33	568758.9	570016.7	-1257.8	1257.77	1581985.881
2001Q2	34	583195.2	571985.9	11209.3	11209.27	125647690
2001Q3	35	589675.9	573682.7	15993.2	15993.23	255783374.7
2001Q4	36	595970.9	575143.3	20827.6	20827.62	433789868.4
2002Q1	37	596536.5	576399.6	20136.9	20136.87	405493420.1
2002Q2	38	594155.3	577479.6	16675.7	16675.72	278079799.6
2002Q3	39	580665.6	578407.3	2258.3	2258.26	5099736.61
2002Q4	40	567335.8	579204.0	-11868.2	11868.18	140853631.4
2003Q1	41	560701.5	579887.7	-19186.2	19186.23	368111354.2
2003Q2	42	553728.3	580474.4	-26746.1	26746.08	715352544.7
2003Q3	43	548450.7	580977.6	-32526.9	32526.85	1057996045

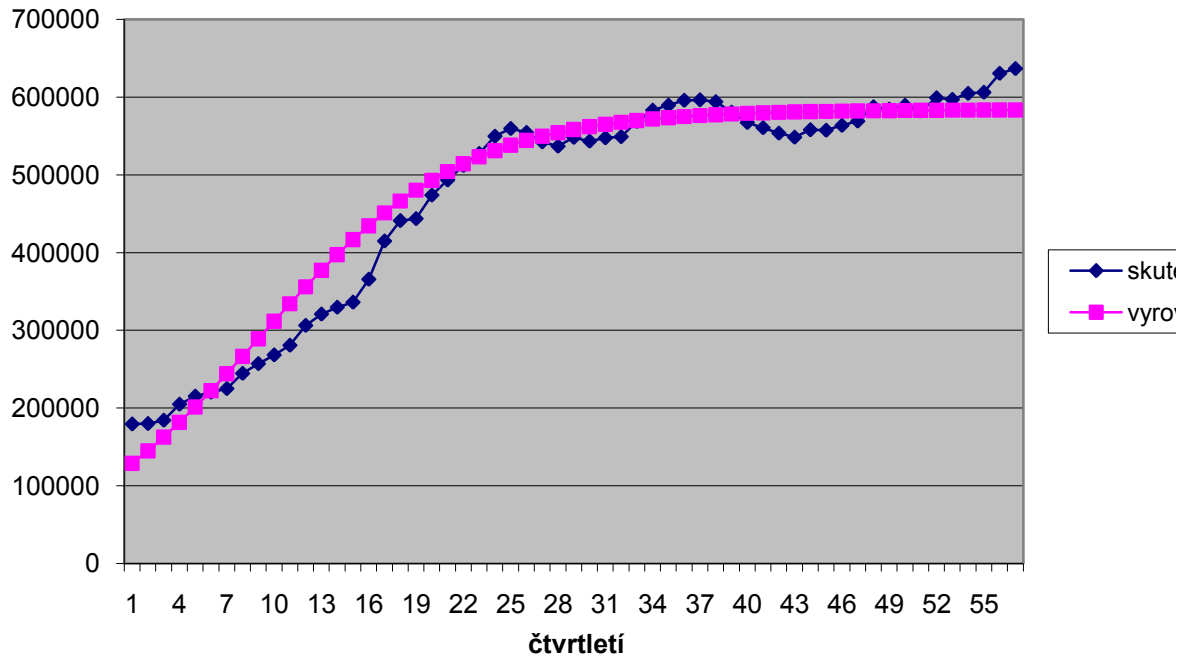
2003Q4	44	558026.2	581409.0	-23382.8	23382.82	546756105.6
2004Q1	45	557442.5	581778.9	-24336.4	24336.41	592260652.5
2004Q2	46	563668.2	582095.9	-18427.7	18427.74	339581768.5
2004Q3	47	569176.8	582367.6	-13190.8	13190.84	173998201.6
2004Q4	48	587564.8	582600.4	4964.4	4964.36	24644894.57
2005Q1	49	584631.3	582799.9	1831.4	1831.41	3354074.72
2005Q2	50	589489.7	582970.7	6519.0	6518.96	42496777.18
2005Q3	51	582149.8	583117.1	-967.3	967.30	935663.4663
2005Q4	52	599177.5	583242.4	15935.1	15935.05	253925870.9
2006Q1	53	597108	583349.8	13758.2	13758.19	189287923.8
2006Q2	54	604796.4	583441.7	21354.7	21354.65	456021271.3
2006Q3	55	606284.6	583520.5	22764.1	22764.12	518205203.5
2006Q4	56	630641.9	583587.9	47054.0	47054.00	2214078897
2007Q1	57	636801.4	583645.6	53155.8	53155.77	2825535648
2007Q2	58		583695.1		0.00	0
2007Q3	59		583737.4		0.00	0
2007Q4	60		583773.6		0.00	0
		26961516.7	27376858.15	-415341.445	1.3607E+06	5.1243E+10

parametr	b=	beta	0.85610577
parametr	a=	alfa	7.07265E-06
parametr	c=	gama	1.71236E-06

THEILovoU	0.11190
-----------	---------

APE	AAPE
0.2821	0.164232
0.1938	0.107324
0.1171	0.062175
0.1140	0.060447
0.0638	0.032961
0.0103	0.005101

vyrovnání logistickým trendem



0.0136	0.00673
0.0326	0.016037
0.0188	0.009332
0.0343	0.01686
0.0318	0.015646
0.0338	0.016636
0.0022	0.001104
0.0192	0.009703
0.0271	0.013747
0.0349	0.017784
0.0338	0.017168
0.0281	0.014233
0.0039	0.001948
0.0209	0.010351
0.0342	0.016821
0.0483	0.023581
0.0593	0.028799

0.0419	0.020521
0.0437	0.021362
0.0327	0.016083
0.0232	0.011455
0.0084	0.004242
0.0031	0.001569
0.0111	0.00556
0.0017	0.00083
0.0266	0.013477
0.0230	0.011655
0.0353	0.017972
0.0375	0.019133
0.0746	0.038752
0.0835	0.043554
0.0653	0.0322

ečnost
vnání

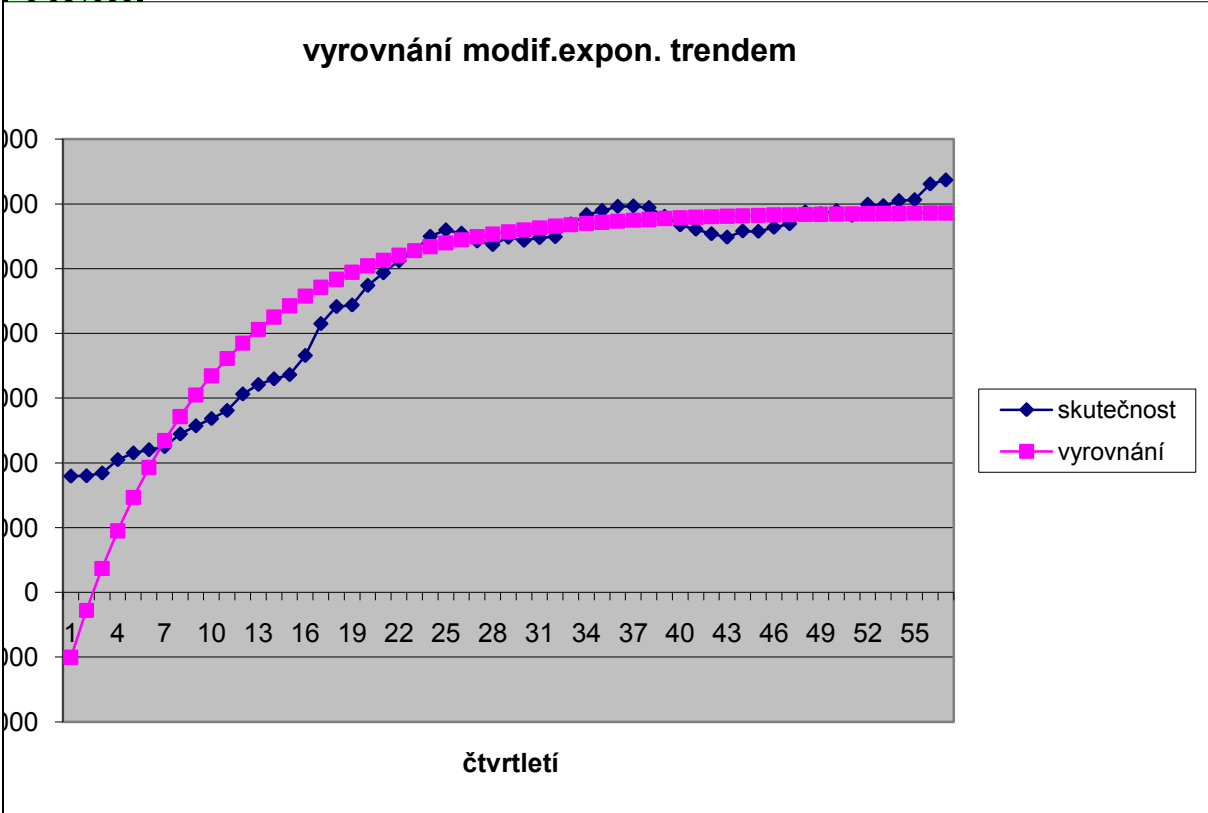
čtvrtletí	pořadí	skutečnost	vyrovnání	rezidua	abs.rezidua	rezidua^2	APE
1993Q1	1	179342.9	-100128.8	279471.7	279471.70	7.8104E+10	1.5583
1993Q2	2	179879.6	-27791.3	207670.9	207670.86	4.3127E+10	1.1545
1993Q3	3	184157.9	36936.2	147221.7	147221.74	2.1674E+10	0.7994
1993Q4	4	204782.7	94854.1	109928.6	109928.65	1.2084E+10	0.5368
1994Q1	5	215145.3	146678.8	68466.5	68466.49	4687659763	0.3182
1994Q2	6	220120.4	193051.5	27068.9	27068.95	732727896	0.1230
1994Q3	7	224857.6	234545.6	-9688.0	9687.95	93856404.2	
1994Q4	8	244498.9	271674.3	-27175.4	27175.45	738504888	
1995Q1	9	257013.4	304897.1	-47883.7	47883.68	2292846879	
1995Q2	10	268251.6	334624.7	-66373.1	66373.08	4405386241	7000
1995Q3	11	280707.7	361224.9	-80517.2	80517.15	6483012037	6000
1995Q4	12	306236.9	385026.6	-78789.7	78789.71	6207817767	5000
1996Q1	13	320848.6	406324.3	-85475.7	85475.74	7306102559	4000
1996Q2	14	329595.1	425381.5	-95786.4	95786.39	9175033138	3000
1996Q3	15	336112.3	442433.8	-106321.5	106321.47	1.1304E+10	2000
1996Q4	16	365625.2	457692.1	-92066.9	92066.90	8476314959	1000
1997Q1	17	414840.1	471345.2	-56505.1	56505.11	3192827780	
1997Q2	18	441183	483562.0	-42379.0	42378.97	1795977354	
1997Q3	19	443649.1	494493.5	-50844.4	50844.39	2585152334	
1997Q4	20	473921.5	504275.0	-30353.5	30353.48	921334047	
1998Q1	21	493387.1	513027.4	-19640.3	19640.33	385742730	
1998Q2	22	512073.8	520859.1	-8785.3	8785.30	77181490.3	
1998Q3	23	527451.8	527866.9	-415.1	415.05	172266.817	-1000
1998Q4	24	549745.5	534137.4	15608.1	15608.14	243613888	-2000
1999Q1	25	559644.4	539748.2	19896.2	19896.20	395858691	
1999Q2	26	554565.3	544768.8	9796.5	9796.54	95972145.9	
1999Q3	27	542409.4	549261.1	-6851.7	6851.74	46946409.5	0.0126
1999Q4	28	536933.7	553280.9	-16347.2	16347.22	267231449	0.0304
2000Q1	29	548175	556877.8	-8702.8	8702.79	75738619.4	0.0159
2000Q2	30	543395.4	560096.3	-16700.9	16700.87	278919052	0.0307
2000Q3	31	547678.9	562976.2	-15297.3	15297.25	234005934	0.0279
2000Q4	32	549152.9	565553.1	-16400.2	16400.16	268965343	0.0299
2001Q1	33	568758.9	567858.9	900.0	900.03	810045.718	0.0016
2001Q2	34	583195.2	569922.1	13273.1	13273.09	176174972	0.0228
2001Q3	35	589675.9	571768.3	17907.6	17907.62	320682745	0.0304
2001Q4	36	595970.9	573420.2	22550.7	22550.67	508532495	0.0378
2002Q1	37	596536.5	574898.4	21638.1	21638.10	468207522	0.0363
2002Q2	38	594155.3	576221.1	17934.2	17934.25	321637284	0.0302
2002Q3	39	580665.6	577404.6	3261.0	3261.04	10634392.2	0.0056
2002Q4	40	567335.8	578463.6	-11127.8	11127.76	123826981	0.0196
2003Q1	41	560701.5	579411.1	-18709.6	18709.65	350050861	0.0334
2003Q2	42	553728.3	580259.0	-26530.7	26530.75	703880481	0.0479
2003Q3	43	548450.7	581017.7	-32567.0	32567.04	1060612362	0.0594

2003Q4	44	558026.2	581696.6	-23670.4	23670.42	560289017	0.0424
2004Q1	45	557442.5	582304.1	-24861.6	24861.59	618098433	0.0446
2004Q2	46	563668.2	582847.6	-19179.4	19179.44	367850894	0.0340
2004Q3	47	569176.8	583334.0	-14157.2	14157.21	200426587	0.0249
2004Q4	48	587564.8	583769.2	3795.6	3795.59	14406484.7	0.0065
2005Q1	49	584631.3	584158.6	472.7	472.67	223416.375	0.0008
2005Q2	50	589489.7	584507.1	4982.6	4982.62	24826494.6	0.0085
2005Q3	51	582149.8	584818.9	-2669.1	2669.07	7123950.16	0.0046
2005Q4	52	599177.5	585097.9	14079.6	14079.64	198236161	0.0235
2006Q1	53	597108	585347.5	11760.5	11760.50	138309275	0.0197
2006Q2	54	604796.4	585570.9	19225.5	19225.52	369620590	0.0318
2006Q3	55	606284.6	585770.8	20513.8	20513.84	420817715	0.0338
2006Q4	56	630641.9	585949.6	44692.3	44692.29	1997401010	0.0709
2007Q1	57	636801.4	586109.6	50691.8	50691.76	2569654379	0.0796
2007Q2	58		586252.8		0.00	0	
2007Q3	59		586381.0		0.00	0	
2007Q4	60		586495.6		0.00	0	
		26961516.7	26961481.39	35.308	2.3056E+06	2.3929E+11	0.1438

parametr	b=	beta	0.894797
parametr	a=	alfa	-768442
parametr	c=	gama	587470.8

THEILovoU	0.14621
-----------	---------

AAPE
3.528055
1.365462
0.665878
0.366873
0.189226
0.065515



0.006276
0.014994
0.007875
0.015135
0.013773
0.014713
0.000792
0.011511
0.015418
0.019284
0.018471
0.015323
0.002816
0.009712
0.01641
0.023396
0.028834

0.020769
0.021813
0.016728
0.012284
0.00324
0.000404
0.004244
0.002287
0.011889
0.009946
0.016151
0.017209
0.036736
0.041452
0.1385

čtvrtletí	pořadí	hodnota	čtvrtletí	pořadí	hodnota	čtvrtletí	pořadí
1993Q1	1	179342.9	1997Q4	20	473921.5	2002Q3	39
1993Q2	2	179879.6	1998Q1	21	493387.1	2002Q4	40
1993Q3	3	184157.9	1998Q2	22	512073.8	2003Q1	41
1993Q4	4	204782.7	1998Q3	23	527451.8	2003Q2	42
1994Q1	5	215145.3	1998Q4	24	549745.5	2003Q3	43
1994Q2	6	220120.4	1999Q1	25	559644.4	2003Q4	44
1994Q3	7	224857.6	1999Q2	26	554565.3	2004Q1	45
1994Q4	8	244498.9	1999Q3	27	542409.4	2004Q2	46
1995Q1	9	257013.4	1999Q4	28	536933.7	2004Q3	47
1995Q2	10	268251.6	2000Q1	29	548175	2004Q4	48
1995Q3	11	280707.7	2000Q2	30	543395.4	2005Q1	49
1995Q4	12	306236.9	2000Q3	31	547678.9	2005Q2	50
1996Q1	13	320848.6	2000Q4	32	549152.9	2005Q3	51
1996Q2	14	329595.1	2001Q1	33	568758.9	2005Q4	52
1996Q3	15	336112.3	2001Q2	34	583195.2	2006Q1	53
1996Q4	16	365625.2	2001Q3	35	589675.9	2006Q2	54
1997Q1	17	414840.1	2001Q4	36	595970.9	2006Q3	55
1997Q2	18	441183	2002Q1	37	596536.5	2006Q4	56
1997Q3	19	443649.1	2002Q2	38	594155.3	2007Q1	57
		5416848.3			10466827		

parametr	b=	0.120993293	0.894797
parametr	a=	-0.152167363	-768442
parametr	c=	-5745097.345	587470.8

hodnota

580665.6

567335.8

560701.5

553728.3

548450.7

558026.2

557442.5

563668.2

569176.8

587564.8

584631.3

589489.7

582149.8

599177.5

597108

604796.4

606284.6

630641.9

636801.4

11077841

čtvrtletí	pořadí	skutečnost	vyrovnání	rezidua	abs.rezidua	rezidua ²
1993Q1	1	179342.9	84034.9	95308.0	95308.0251	9083619654
1993Q2	2	179879.6	106706.3	73173.3	73173.2775	5354328543
1993Q3	3	184157.9	131570.5	52587.4	52587.3879	2765433367
1993Q4	4	204782.7	158101.1	46681.6	46681.5781	2179169736
1994Q1	5	215145.3	185736.1	29409.2	29409.2138	864901856.4
1994Q2	6	220120.4	213919.4	6201.0	6201.0133	38452565.99
1994Q3	7	224857.6	242133.9	-17276.3	17276.2526	298468905
1994Q4	8	244498.9	269923.7	-25424.8	25424.8493	646422959.6
1995Q1	9	257013.4	296907.6	-39894.2	39894.2217	1591548923
1995Q2	10	268251.6	322782.9	-54531.3	54531.2857	2973661122
1995Q3	11	280707.7	347324.1	-66616.4	66616.406	4437745547
1995Q4	12	306236.9	370376.9	-64140.0	64140.0323	4113943743
1996Q1	13	320848.6	391849.4	-71000.8	71000.8427	5041119666
1996Q2	14	329595.1	411702.3	-82107.2	82107.198	6741591970
1996Q3	15	336112.3	429938.7	-93826.4	93826.4435	8803401500
1996Q4	16	365625.2	446595.2	-80970.0	80969.9552	6556133647
1997Q1	17	414840.1	461732.5	-46892.4	46892.449	2198901777
1997Q2	18	441183	475429.3	-34246.3	34246.2559	1172806045
1997Q3	19	443649.1	487774.8	-44125.7	44125.7155	1947078766
1997Q4	20	473921.5	498865.0	-24943.5	24943.5406	622180218.3
1998Q1	21	493387.1	508798.1	-15411.0	15411.0466	237500358.4
1998Q2	22	512073.8	517671.8	-5598.0	5598.00931	31337708.28
1998Q3	23	527451.8	525581.0	1870.8	1870.79202	3499862.793
1998Q4	24	549745.5	532616.5	17129.0	17128.9862	293402168.6
1999Q1	25	559644.4	538863.9	20780.5	20780.5045	431829365.2
1999Q2	26	554565.3	544402.9	10162.4	10162.3691	103273745.7
1999Q3	27	542409.4	549307.3	-6897.9	6897.92769	47581406.47
1999Q4	28	536933.7	553644.7	-16711.0	16710.9765	279256734.8
2000Q1	29	548175	557476.6	-9301.6	9301.57014	86519207.02
2000Q2	30	543395.4	560858.8	-17463.4	17463.4397	304971725.9
2000Q3	31	547678.9	563841.9	-16163.0	16162.9665	261241487.1
2000Q4	32	549152.9	566470.9	-17318.0	17318.0406	299914530.4
2001Q1	33	568758.9	568786.6	-27.7	27.7417645	769.6054994
2001Q2	34	583195.2	570825.2	12370.0	12369.9726	153016223.1
2001Q3	35	589675.9	572619.0	17056.9	17056.8858	290937353.3
2001Q4	36	595970.9	574196.7	21774.2	21774.1535	474113759.9
2002Q1	37	596536.5	575583.9	20952.6	20952.5554	439009576.4
2002Q2	38	594155.3	576803.2	17352.1	17352.0691	301094301.2
2002Q3	39	580665.6	577874.6	2791.0	2790.96844	7789504.847
2002Q4	40	567335.8	578815.9	-11480.1	11480.0534	131791626.1
2003Q1	41	560701.5	579642.5	-18941.0	18941.0365	358762862.4
2003Q2	42	553728.3	580368.5	-26640.2	26640.1827	709699336.5
2003Q3	43	548450.7	581005.9	-32555.2	32555.1626	1059838614
2003Q4	44	558026.2	581565.4	-23539.2	23539.2005	554093958.8

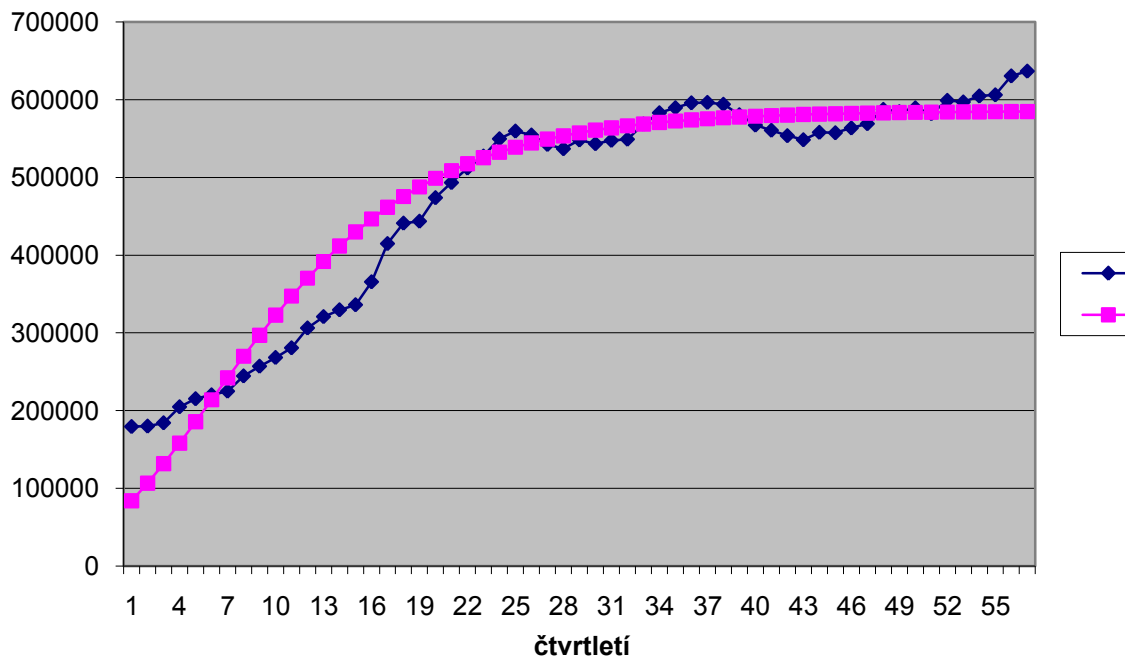
2004Q1	45	557442.5	582056.5	-24614.0	24614.0407	605851001.3
2004Q2	46	563668.2	582487.6	-18819.4	18819.3964	354169680.3
2004Q3	47	569176.8	582865.9	-13689.1	13689.0811	187390941.9
2004Q4	48	587564.8	583197.8	4367.0	4366.97309	19070453.94
2005Q1	49	584631.3	583489.1	1142.2	1142.21166	1304647.485
2005Q2	50	589489.7	583744.6	5745.1	5745.065	33005771.86
2005Q3	51	582149.8	583968.8	-1819.0	1819.03336	3308882.351
2005Q4	52	599177.5	584165.5	15012.0	15011.981	225359573.3
2006Q1	53	597108	584338.1	12769.9	12769.9394	163071353.5
2006Q2	54	604796.4	584489.4	20307.0	20306.9841	412373603
2006Q3	55	606284.6	584622.2	21662.4	21662.418	469260354.7
2006Q4	56	630641.9	584738.6	45903.3	45903.2616	2107109427
2007Q1	57	636801.4	584840.8	51960.6	51960.614	2699905404
2007Q2	58				0	0
2007Q3	59				0	0
2007Q4	60				0	0
		26961516.7	27360031.9	-398515.2	1647453.6	8.157257E+10

parametr	b=	beta	0.876968
parametr	a=	alfa	-2.21371
parametr	c=	gama	13.28034

THEILovoU	0.12314
-----------	---------

APE	AAPE
0.5314	0.361868
0.4068	0.255328
0.2856	0.166559
0.2280	0.128641
0.1367	0.073361
0.0282	0.014287

vyrovnání Gompertzovým trendem



0.0189	0.009247
0.0127	0.006318
0.0311	0.015323
0.0170	0.008413
0.0321	0.015815
0.0295	0.014541
0.0315	0.015523
0.0000	2.44E-05
0.0212	0.010719
0.0289	0.014675
0.0365	0.018608
0.0351	0.017876
0.0292	0.014819
0.0048	0.002409
0.0202	0.010016
0.0338	0.01661
0.0481	0.02349
0.0594	0.028824
0.0422	0.020656

0.0442	0.021601
0.0334	0.01642
0.0241	0.011882
0.0074	0.00373
0.0020	0.000978
0.0097	0.004897
0.0031	0.00156
0.0251	0.012686
0.0214	0.010809
0.0336	0.017075
0.0357	0.01819
0.0728	0.037769
0.0816	0.042533
0.0870	0.0451

- skutečnost
- vyrovnání

čtvrtletí	pořadí	hodnota	čtvrtletí	pořadí	hodnota	čtvrtletí	pořadí	hodnota
1993Q1	1	12.09705	1997Q4	20	13.0688	2002Q3	39	13.27193
1993Q2	2	12.10004	1998Q1	21	13.10905	2002Q4	40	13.24871
1993Q3	3	12.12355	1998Q2	22	13.14622	2003Q1	41	13.23694
1993Q4	4	12.2297	1998Q3	23	13.17581	2003Q2	42	13.22443
1994Q1	5	12.27907	1998Q4	24	13.21721	2003Q3	43	13.21485
1994Q2	6	12.30193	1999Q1	25	13.23506	2003Q4	44	13.23216
1994Q3	7	12.32322	1999Q2	26	13.22594	2004Q1	45	13.23111
1994Q4	8	12.40697	1999Q3	27	13.20378	2004Q2	46	13.24222
1995Q1	9	12.45688	1999Q4	28	13.19363	2004Q3	47	13.25195
1995Q2	10	12.49968	2000Q1	29	13.21435	2004Q4	48	13.28374
1995Q3	11	12.54507	2000Q2	30	13.20559	2005Q1	49	13.27874
1995Q4	12	12.63211	2000Q3	31	13.21344	2005Q2	50	13.28701
1996Q1	13	12.67872	2000Q4	32	13.21613	2005Q3	51	13.27448
1996Q2	14	12.70562	2001Q1	33	13.25121	2005Q4	52	13.30331
1996Q3	15	12.7252	2001Q2	34	13.27628	2006Q1	53	13.29985
1996Q4	16	12.80936	2001Q3	35	13.28733	2006Q2	54	13.31265
1997Q1	17	12.93565	2001Q4	36	13.29795	2006Q3	55	13.3151
1997Q2	18	12.99722	2002Q1	37	13.2989	2006Q4	56	13.35449
1997Q3	19	13.00279	2002Q2	38	13.2949	2007Q1	57	13.36421
		237.8498			251.1316			252.2279

parametr	b=	0.082545	0.876968
parametr	a=	-0.16667	-2.21371
parametr	c=	-14.4767	13.28034

hodnota	hodnota	hodnota
179342.9	473921.5	580665.6
179879.6	493387.1	567335.8
184157.9	512073.8	560701.5
204782.7	527451.8	553728.3
215145.3	549745.5	548450.7
220120.4	559644.4	558026.2
224857.6	554565.3	557442.5
244498.9	542409.4	563668.2
257013.4	536933.7	569176.8
268251.6	548175	587564.8
280707.7	543395.4	584631.3
306236.9	547678.9	589489.7
320848.6	549152.9	582149.8
329595.1	568758.9	599177.5
336112.3	583195.2	597108
365625.2	589675.9	604796.4
414840.1	595970.9	606284.6
441183	596536.5	630641.9
443649.1	594155.3	636801.4

čtvrtletí	pořadí	hodnota	čtvrtletí	pořadí	hodnota	čtvrtletí	pořadí
1993Q1	1	179342.9	1997Q4	20	473921.5	2002Q3	39
1993Q2	2	179879.6	1998Q1	21	493387.1	2002Q4	40
1993Q3	3	184157.9	1998Q2	22	512073.8	2003Q1	41
1993Q4	4	204782.7	1998Q3	23	527451.8	2003Q2	42
1994Q1	5	215145.3	1998Q4	24	549745.5	2003Q3	43
1994Q2	6	220120.4	1999Q1	25	559644.4	2003Q4	44
1994Q3	7	224857.6	1999Q2	26	554565.3	2004Q1	45
1994Q4	8	244498.9	1999Q3	27	542409.4	2004Q2	46
1995Q1	9	257013.4	1999Q4	28	536933.7	2004Q3	47
1995Q2	10	268251.6	2000Q1	29	548175	2004Q4	48
1995Q3	11	280707.7	2000Q2	30	543395.4	2005Q1	49
1995Q4	12	306236.9	2000Q3	31	547678.9	2005Q2	50
1996Q1	13	320848.6	2000Q4	32	549152.9	2005Q3	51
1996Q2	14	329595.1	2001Q1	33	568758.9	2005Q4	52
1996Q3	15	336112.3	2001Q2	34	583195.2	2006Q1	53
1996Q4	16	365625.2	2001Q3	35	589675.9	2006Q2	54
1997Q1	17	414840.1	2001Q4	36	595970.9	2006Q3	55
1997Q2	18	441183	2002Q1	37	596536.5	2006Q4	56
1997Q3	19	443649.1	2002Q2	38	594155.3	2007Q1	57
		5416848.3			10466827.4		

hodnota
580665.6
567335.8
560701.5
553728.3
548450.7
558026.2
557442.5
563668.2
569176.8
587564.8
584631.3
589489.7
582149.8
599177.5
597108
604796.4
606284.6
630641.9
636801.4
11077841