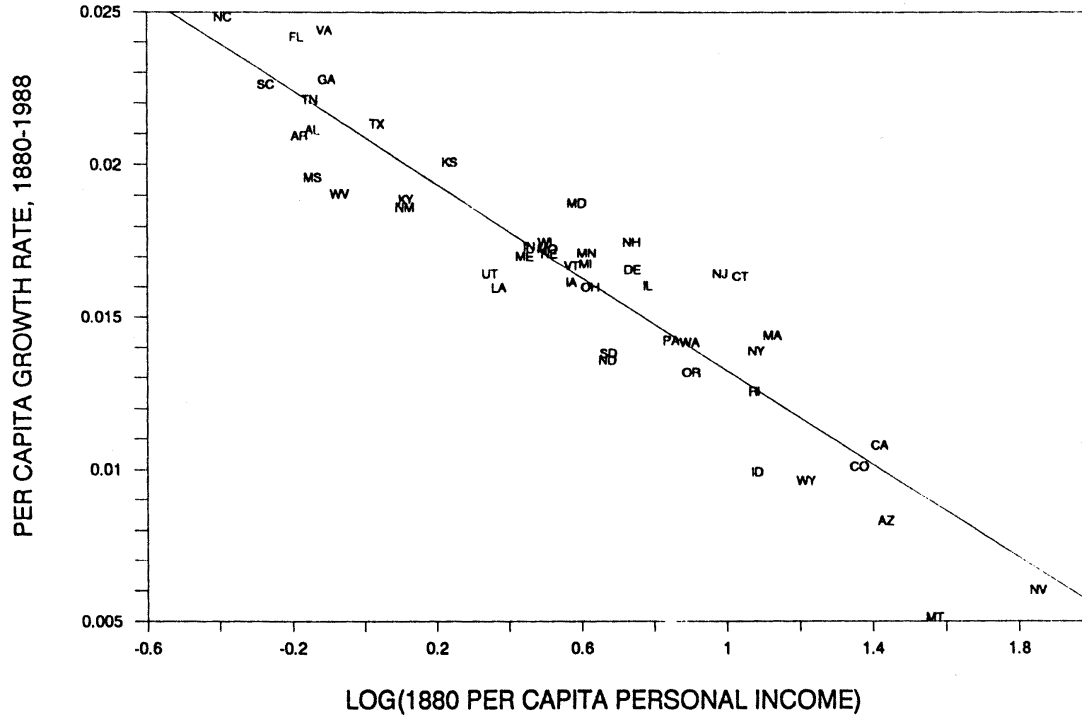


---

FIGURE 1. Convergence of Personal Income across U.S. States: 1880  
Income and Income Growth from 1880 to 1988

---



---

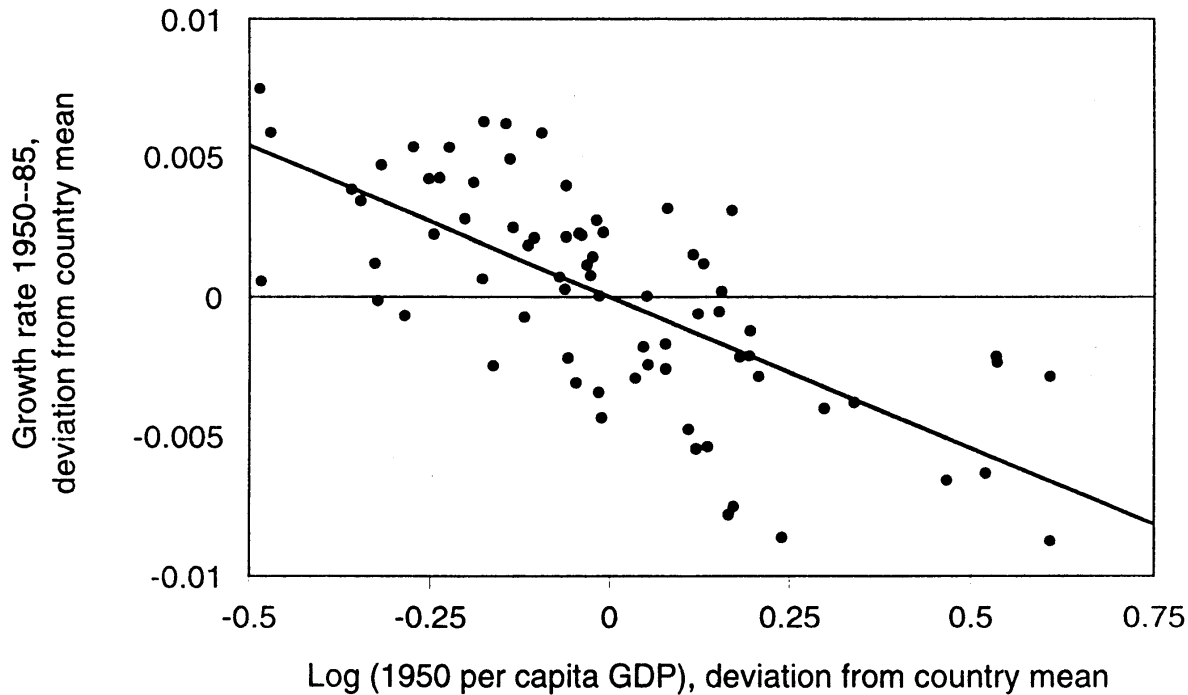
Log of 1880 per capita personal income

---

---

**FIGURE 3. Growth Rate versus Initial Level of Per Capita GDP for 73 European Regions**

---



---

Log (1950 per capita GDP), deviation from country mean

---

---

FIGURE 5. Growth versus Initial Level of Real Per Capita GDP for 114 Countries

---

