

quarter	P0	P1	P2	P3	P4	P5	P6	P7	P8	P8	P10	P11	P12
199901	0	0	0	0	0	0	0	0	0	0	0	0	0
199902	0	0	0	0	0	0	0	0	0	0	0	0	0
199903	0	0	0	0	0	0	0	0	0	0	0	0	0
199904	0	0	0	0	0	0	0	0	0	0	0	0	0
200001	88.6	95.8	89.5	121.7	77.0	105.9	79.4	94.2	77.6	90.4	86.0	82.8	84.7
200002	88.9	95.1	89.9	121.1	77.4	105.8	80.1	97.5	77.6	89.8	86.3	83.1	84.9
200003	89.9	95.8	90.7	120.2	78.7	105.6	80.7	100.2	77.6	92.9	87.1	83.5	85.0
200004	90.3	98.1	91.1	120.3	79.2	105.5	80.8	99.6	77.6	91.1	88.2	84.2	85.3
200101	92.2	99.7	92.3	119.0	84.1	105.6	81.5	96.8	81.8	92.6	88.3	84.9	87.4
200102	93.3	102.0	93.2	119.1	84.6	105.7	81.9	99.1	81.6	93.7	88.4	85.3	88.9
200103	94.8	101.7	93.3	118.4	87.2	105.8	83.5	99.6	81.2	100.7	89.4	85.9	89.2
200104	94.2	100.9	93.8	118.8	87.5	105.9	84.3	97.1	80.8	96.0	91.3	86.8	89.9
200201	95.8	103.2	94.0	117.1	90.8	105.8	85.2	95.3	83.7	97.0	91.4	87.8	92.1
200202	95.5	101.3	95.0	116.5	90.1	105.9	86.1	97.1	84.3	96.6	91.4	88.7	92.4
200203	95.5	96.3	95.4	114.9	91.8	105.6	87.9	96.4	85.0	100.8	92.4	89.0	92.3
200204	94.7	95.7	95.4	114.4	91.3	105.4	87.8	96.6	83.2	96.2	95.1	89.1	92.7
200301	95.4	96.9	95.7	111.5	92.0	105.1	88.8	97.2	82.9	97.8	95.2	89.7	94.8
200301	95.6	97.5	95.7	111.1	93.0	104.4	90.2	96.6	82.5	96.4	95.3	90.0	94.9
200303	95.4	95.3	95.8	108.6	93.3	103.7	91.3	96.0	82.0	99.7	95.1	90.5	95.0
200304	95.5	98.2	95.8	108.8	93.0	103.3	90.6	95.9	81.9	95.4	95.7	91.0	95.5
200401	97.6	101.1	96.5	106.3	95.8	102.8	90.9	98.0	94.3	97.0	96.0	92.1	97.8
200401	98.1	101.1	98.5	106.2	95.4	102.4	93.0	99.3	93.1	96.9	96.3	95.2	99.1
200403	98.4	99.5	99.8	104.2	95.7	101.7	94.3	98.8	91.8	102.1	97.8	97.0	99.6
200404	98.4	99.3	99.5	105.5	97.1	101.2	93.8	98.1	92.5	97.1	100.9	98.2	99.5
200501	99.2	100.8	100.2	101.5	99.1	100.6	98.0	96.0	92.0	99.2	98.6	99.3	99.9
200501	99.6	101.0	99.9	101.2	99.1	100.2	100.1	99.0	96.4	98.4	98.9	99.8	100.0
200503	100.2	98.9	99.9	98.5	99.7	99.7	101.4	102.4	106.0	103.0	99.9	99.9	99.9
200504	100.7	99.3	99.9	98.7	102.0	99.4	100.7	102.5	105.5	99.5	102.7	100.9	100.1

200601	102.0	100.2	101.0	95.5	106.0	99.0	102.2	100.3	104.7	101.1	102.6	101.8	101.3
200601	102.5	101.1	101.1	94.8	106.4	98.8	104.1	102.5	105.4	100.3	102.6	102.4	101.8
200603	103.2	101.4	101.2	92.3	106.6	98.4	106.5	103.4	108.4	104.9	103.5	102.9	102.1
200604	102.2	100.7	101.2	93.6	106.0	98.5	106.5	100.3	108.6	99.8	105.2	103.3	102.2
200701	103.6	103.2	104.6	92.9	108.4	98.4	106.7	99.1	108	101.7	105.3	104.2	103.5
200701	105	104.9	109.4	94.4	109.3	98.6	109.9	102	107.6	100.9	105.3	105	104.1
200703	105.9	104.3	114.7	92.2	110.2	98.5	109.2	103	106.4	103.4	105.9	105.8	104
200704	107.2	110.1	117.1	93.8	111.5	98.6	108.8	103.7	105.1	99.9	107.3	107	104.2
200801	111.3	115	118.7	91.3	118.4	98.8	142	105.7	105.1	102.6	107.6	111.3	108.5
200802	112.1	115.6	119.4	93.1	120.1	99.3	141.8	106.9	104.8	101.8	107.7	112.7	108.8
200803	112.9	114	123.7	91.3	122.1	99.2	143.7	106.4	103.8	104.1	108.9	113.7	109.2
200804	112.2	112.3	128.1	93.4	124	98.8	143.6	98.3	101.7	100.9	111.1	114.3	109.2
200901	113.6	113.5	129.5	90.2	130.1	98.8	141.4	95.4	100.6	101.7	111.3	114.9	110.5
200902	113.7	111.5	130.5	90.8	130.2	98.8	136.4	98.6	100.2	101.2	111.3	115.5	110.8
200903	113	107	130.5	87.9	129.9	98.2	137	100	98.1	103.1	111.7	115.8	114.4
200904	112.7	106.8	131.2	90.7	129.6	98	137.6	99.2	97.4	99.7	112.8	116	111.3
201001	114.4	110.8	134.5	87.6	131.5	98.2	141.7	100.2	97.7	100.5	112.9	117.6	111.9
201002	115.1	111.5	136.1	88.9	132	98.2	145.4	101.8	97.3	100.1	112.9	118.4	111.8
201003	115.2	110.9	137.8	85.7	132.6	97.9	147.3	101	96.6	102.5	113.6	118.7	112.3
201004	115	112	137.6	88	132.6	97.4	146.7	100.6	96.5	98.5	115.1	118.8	112.6

M0	M1+M2	Q0	Q1	Q2	Q3	Q4	Q5	Q6	Q7	Q8	Q9	Q10	Q11
		0	0	0	0	0	0	0	0	0	0	0	0
		0	0	0	0	0	0	0	0	0	0	0	0
		0	0	0	0	0	0	0	0	0	0	0	0
		0	0	0	0	0	0	0	0	0	0	0	0
5,783	1,501	6527.1	1377.9	202.2	268.7	1514.3	367.3	128.5	575.4	305.4	652.7	53.5	385.3
6,285	1,615	7069.7	1491.1	219.1	336.1	1568.5	405.5	128.6	708.7	318.3	720.5	32.4	409.1
6,417	1,634	7137.9	1489.6	228.2	299.5	1587.0	429.0	109.0	709.6	328.6	751.3	47.1	453.9
6,771	1,733	7498.3	1536.2	248.1	450.5	1539.1	502.4	132.4	649.6	351.8	787.0	34.0	375.3
5,929	1,546	6430.6	1372.1	192.8	273.1	1376.9	362.7	146.0	691.1	278.7	630.7	48.7	376.9
6,506	1,690	6973.2	1461.8	213.5	367.8	1385.3	411.5	141.6	797.2	307.6	738.5	32.8	400.9
6,505	1,691	6861.8	1459.2	221.9	319.3	1471.3	407.4	109.0	705.8	296.8	734.9	45.9	438.9
7,093	1,832	7529.7	1590.7	242.0	500.0	1410.3	521.2	138.8	711.6	361.4	764.6	35.0	362.9
6,156	1,545	6425.9	1316.9	197.9	299.7	1393.2	391.3	140.8	554.0	315.4	657.7	55.8	374.7
6,673	1,662	6987.4	1441.3	212.6	376.0	1461.7	431.5	141.7	693.1	327.4	724.6	33.9	394.6
6,810	1,682	7130.9	1525.4	223.3	336.8	1476.0	456.4	118.3	717.8	334.1	748.0	49.8	438.2
7,205	1,783	7608.2	1620.7	243.2	508.7	1448.0	535.1	143.5	652.2	365.4	805.6	35.8	364.8
6,377	1,583	6684.5	1438.6	197.5	298.7	1431.5	396.8	150.9	576.1	357.1	674.8	68.3	373.5
6,903	1,703	7220.7	1535.4	215.3	372.6	1473.1	440.6	151.9	738.1	373.3	750.0	42.0	395.6
7,050	1,724	7389.9	1581.3	226.5	337.0	1511.3	467.7	128.1	763.5	387.8	782.3	61.0	439.8
7,440	1,827	7790.6	1620.2	246.3	506.4	1479.6	549.9	155.6	696.6	415.1	839.6	44.9	363.7
6,758	1,637	6924.2	1436.2	191.7	330.2	1447.8	401.8	155.1	727.6	323.4	721.6	56.3	390.9
7,132	1,746	7270.1	1525.2	207.1	387.0	1452.8	435.5	157.0	831.8	356.6	773.0	34.3	400.2
7,333	1,758	7452.2	1548.7	217.4	361.8	1498.4	468.0	129.4	859.3	361.7	824.7	50.1	439.2
7,672	1,851	7796.7	1629.4	234.2	532.7	1417.1	553.4	153.5	805.3	387.0	865.1	31.7	354.4
6,881	1,682	6936.5	1472.2	197.6	323.2	1467.2	431.4	151.0	695.8	355.4	705.6	51.7	357.5
7,560	1,765	7590.4	1540.6	209.2	428.9	1531.8	502.0	155.8	913.1	344.4	791.7	30.3	386.8
7,677	1,780	7661.7	1576.3	221.2	363.5	1571.7	520.6	124.3	943.4	324.5	801.9	41.0	425.4
8,041	1,895	7985.1	1664.7	242.2	555.2	1518.6	591.5	164.8	792.2	348.8	864.3	34.1	353.8

7,384	1,695	7239.2	1489.0	201.0	363.4	1495.3	496.0	168.3	724.8	346.7	732.9	51.7	380.2
8,123	1,880	7924.9	1638.0	221.6	456.8	1600.6	533.4	160.4	933.7	353.9	816.6	33.1	395.5
8,285	1,919	8028.1	1662.7	230.2	426.9	1632.3	571.1	143.7	915.9	362.5	821.7	49.3	444.1
8,794	2,037	8604.7	1768.6	253.0	630.3	1604.7	684.3	163.4	911.3	384.9	900.8	36.1	371.7
8,029	1,818	7750.0	1554.3	204.6	405.8	1574.7	535.6	188.4	887.0	361.1	764.0	58.9	390.6
8,685	1,975	8271.4	1651.1	222.1	491.5	1582.8	628.8	170.2	1031.4	368.0	880.1	33.2	425.7
8,783	1,990	8293.7	1663.5	222.3	459.9	1575.3	606.1	157.5	951.5	379.7	967.1	61.4	488.7
9,204	2,163	8585.8	1712.1	237.4	639.7	1573.1	719.1	212.3	788.8	409.1	973.0	38.2	390.7
8,647	2,002	7769.1	1542.6	192.1	433.7	1489.0	593.1	185.9	854.3	401.5	822.6	67.8	402.5
9,417	2,130	8400.5	1627.2	208.5	511.3	1556.2	612.3	184.1	1110.4	407.4	950.9	38.1	433.9
9,521	2,155	8433.1	1657.0	215.0	491.8	1570.8	604.8	161.4	1027.3	420.0	1027.9	62.4	483.7
9,830	2,273	8761.1	1769.4	223.3	660.6	1535.5	724.7	185.9	967.4	449.4	1044.6	41.4	396.3
9,057	1,997	7972.7	1548.9	184.6	443.5	1557.3	585.0	190.9	941.3	428.4	889.9	69.2	403.0
9,709	2,126	8539.1	1665.5	206.1	525.3	1586.8	625.5	198.7	1186.6	433.1	968.4	35.9	438.1
9,641	2,119	8531.9	1720.6	213.0	498.3	1618.9	656.8	166.4	969.0	449.5	1029.1	56.4	490.5
10,013	2,243	8884.6	1823.0	225.6	681.4	1557.1	758.2	198.4	999.0	475.4	1005.0	44.3	388.8
9,123	2,029	7974.7	1614.6	178.4	452.1	1562.7	535.6	178.5	940.1	447.3	882.6	67.3	394.6
9,680	2,115	8410.1	1660.1	194.0	508.4	1590.9	597.8	183.6	1148.3	449.1	957.0	56.7	405.4
9,743	2,153	8457.5	1692.5	200.3	521.6	1620.7	593.5	169.7	1000.0	453.4	1046.8	65.1	460.0
10,236	2,282	8900.9	1771.4	216.6	725.0	1600.3	754.6	193.6	1005.0	477.7	1036.5	43.4	378.8

Q12	E0	E1	E2	E3	E4	E5	E6	E7	E8	E9	E10	E11	E12
0	0	0	0	0	0	0	0	0	0	0	0	0	0
0	0	0	0	0	0	0	0	0	0	0	0	0	0
0	0	0	0	0	0	0	0	0	0	0	0	0	0
0	0	0	0	0	0	0	0	0	0	0	0	0	0
664.7	5,783	1,320	181	327	1,166	389	102	542	237	590	46	319	563
663.1	6,285	1,418	197	407	1,214	429	103	691	247	647	28	340	563
645.9	6,417	1,427	207	360	1,249	453	88	711	255	698	41	379	549
772.6	6,771	1,507	226	542	1,219	530	107	647	273	717	30	316	659
633.9	5,929	1,368	178	325	1,158	383	119	669	228	584	43	320	554
619.8	6,506	1,491	199	438	1,172	435	116	790	251	692	29	342	551
593.0	6,505	1,484	207	378	1,283	431	91	703	241	740	41	377	529
778.6	7,093	1,605	227	594	1,234	552	117	691	292	734	32	315	700
704.7	6,156	1,359	186	351	1,265	414	120	528	264	638	51	329	649
702.4	6,673	1,460	202	438	1,317	457	122	673	276	700	31	350	649
686.9	6,810	1,469	213	387	1,355	482	104	692	284	754	46	390	634
819.8	7,205	1,551	232	582	1,322	564	126	630	304	775	34	325	760
715.2	6,377	1,394	189	333	1,317	417	134	560	296	660	65	335	678
714.4	6,903	1,497	206	414	1,370	460	137	713	308	723	40	356	678
696.8	7,050	1,507	217	366	1,410	485	117	733	318	780	58	398	662
831.4	7,440	1,591	236	551	1,376	568	141	668	340	801	43	331	794
712.7	6,758	1,452	185	351	1,387	413	141	713	305	700	54	360	697
682.1	7,132	1,542	204	411	1,386	446	146	826	332	749	33	381	676
670.7	7,333	1,541	217	377	1,434	476	122	849	332	842	49	426	668
815.1	7,672	1,618	233	562	1,376	560	144	790	358	840	32	348	811
734.7	6,881	1,484	198	328	1,454	434	148	668	327	700	51	355	734
753.0	7,560	1,556	209	434	1,518	503	156	904	332	779	30	386	753
725.7	7,677	1,559	221	358	1,567	519	126	966	344	826	41	425	725
862.1	8,041	1,653	242	548	1,549	588	166	812	368	860	35	357	863

812.4	7,384	1,492	203	347	1,585	491	172	727	363	741	53	387	823
810.4	8,123	1,656	224	433	1,703	527	167	957	373	819	34	405	825
790.4	8,285	1,686	233	394	1,740	562	153	947	393	862	51	457	807
944.2	8,794	1,781	256	590	1,701	674	174	914	418	899	38	384	965
855.1	8,029	1,604	214	377	1,707	527	201	879	390	777	62	407	885
857.8	8,685	1,732	243	464	1,730	620	187	1,052	396	888	35	447	893
862.5	8,783	1,735	255	424	1,736	597	172	980	404	1000	65	517	897
1025.0	9,204	1,885	278	600	1,754	709	231	818	430	972	41	418	1068
872.8	8,647	1,774	228	396	1,763	586	264	903	422	844	73	448	947
882.4	9,417	1,881	249	476	1,869	608	261	1,187	427	968	41	489	960
870.8791	9,521	1,889	266	449	1,918	600	232	1093	436	1070	68	550	951
999.1	9,830	1,987	286	617	1,904	716	267	951	457	1054	46	453	1091
915.8	9,057	1,758	239	400	2,026	578	270	898	431	905	77	463	1012
920.6	9,709	1,857	269	477	2,066	618	271	1,170	434	980	40	506	1020
879.3706	9,641	1,841	278	438	2,103	645	228	969	441	1061	63	568	1006
1043.1	10,013	1,947	296	618	2,018	743	273	991	463	1002	50	451	1161
945.5	9,123	1789	240	396	2055	526	253	942	437	887	76	464	1058
940.1	9,680	1851	264	452	2100	587	267	1169	437	958	64	480	1051
908.3	9,743	1877	276	447	2149	581	250	1010	438	1073	74	546	1020
1048.0	10,236	1984	298	638	2122	735	284	1011	461	1021	50	450	1180

quarter
199901
199902
199903
199904
200001
200002
200003
200004
200101
200102
200103
200104
200201
200202
200203
200204
200301
200301
200303
200304
200401
200401
200403
200404
200501
200501
200503
200504

200601
200601
200603
200604

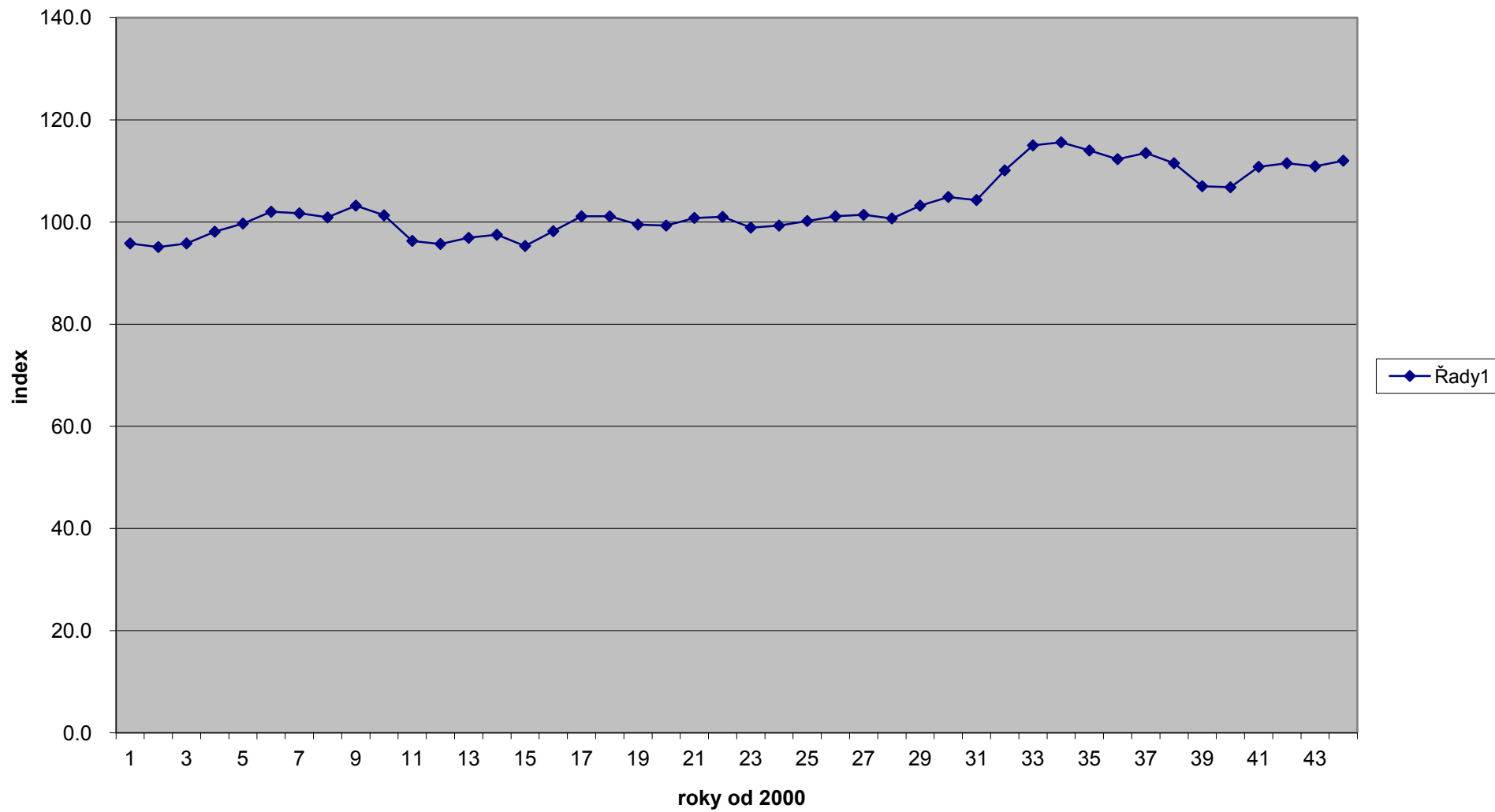
200701
200701
200703
200704

200801
200802
200803
200804

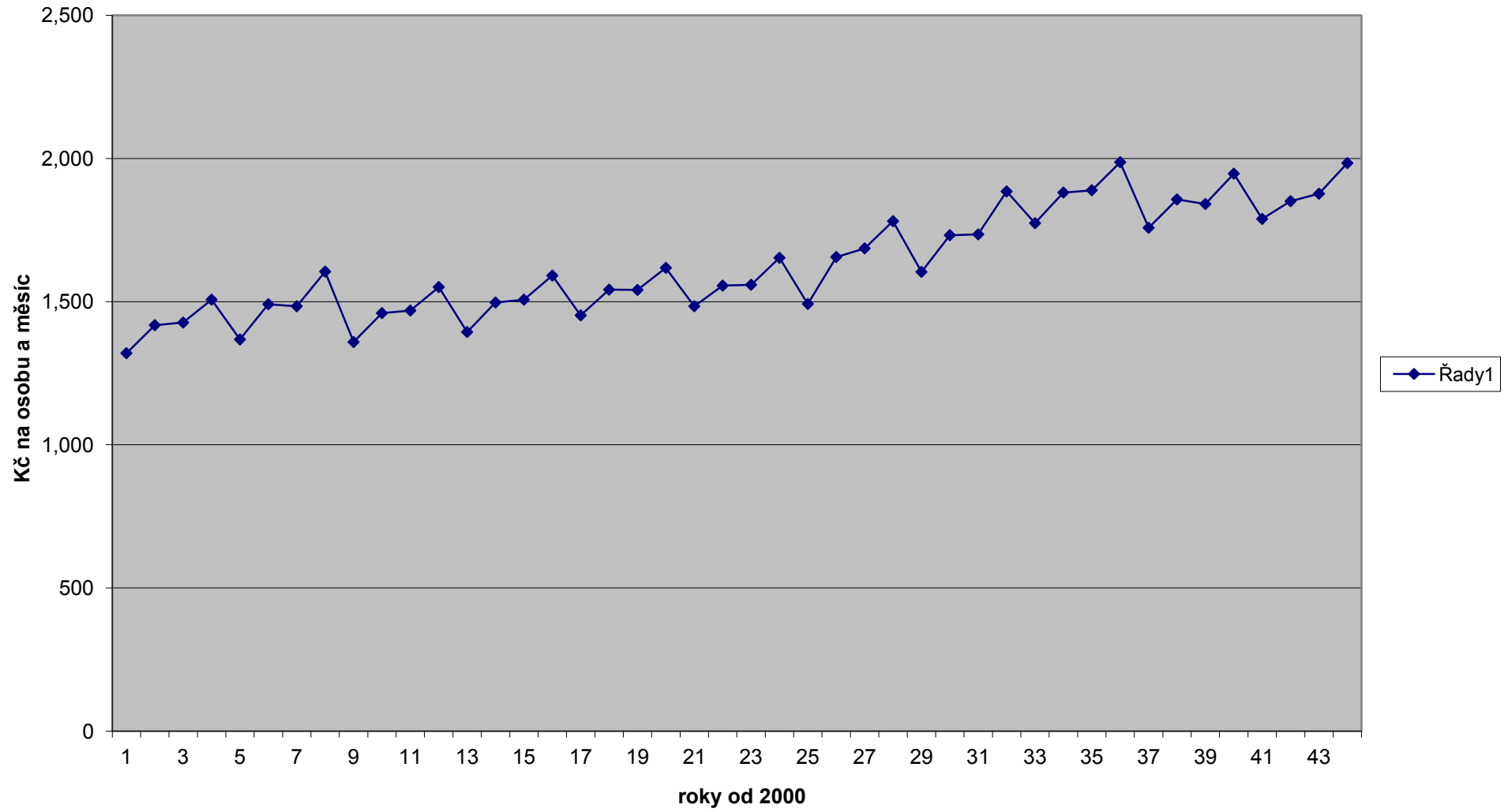
200901
200902
200903
200904

201001
201002
201003
201004

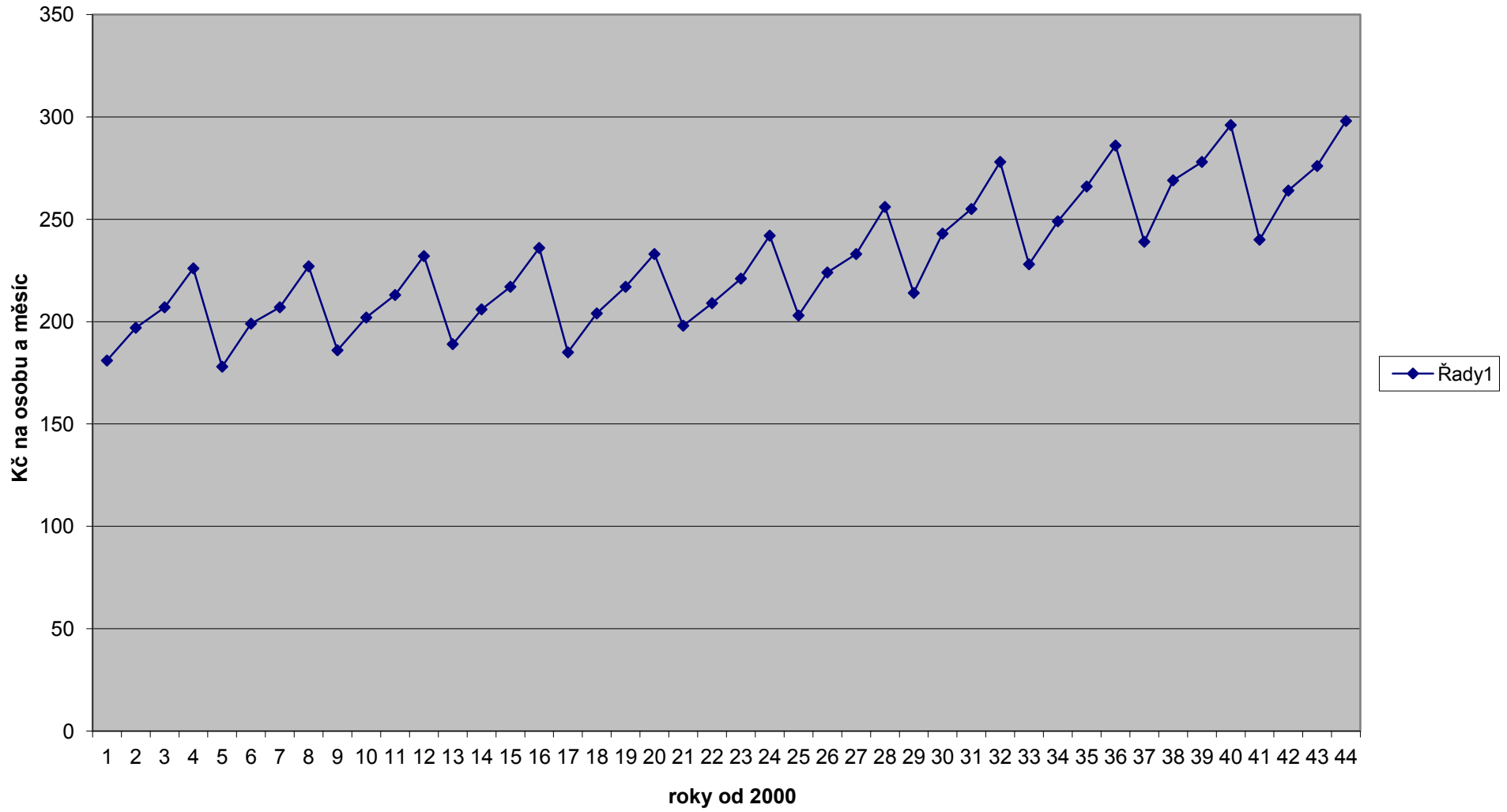
Cenový index potravin a nealko



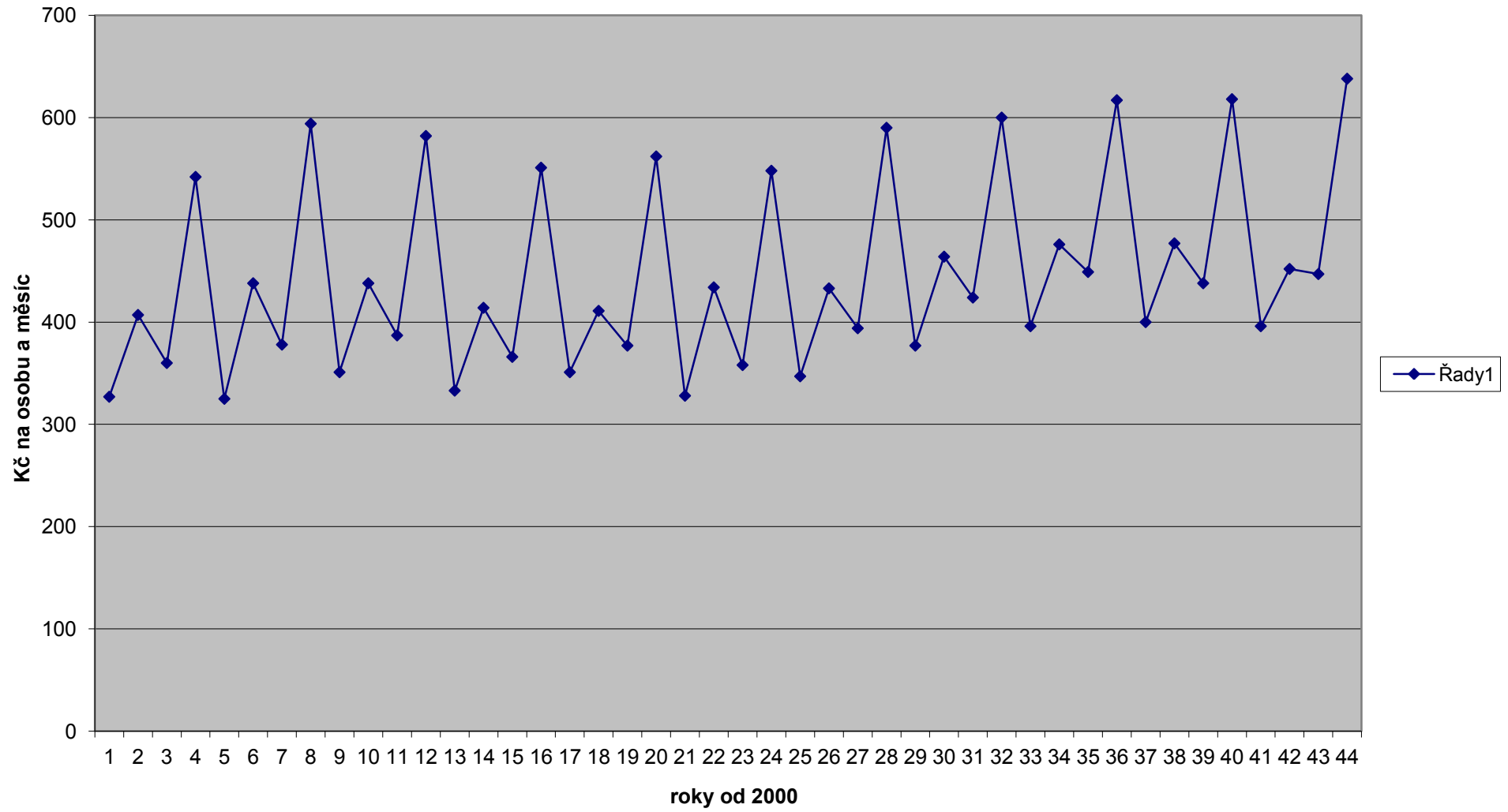
Výdaje na potraviny a nealko



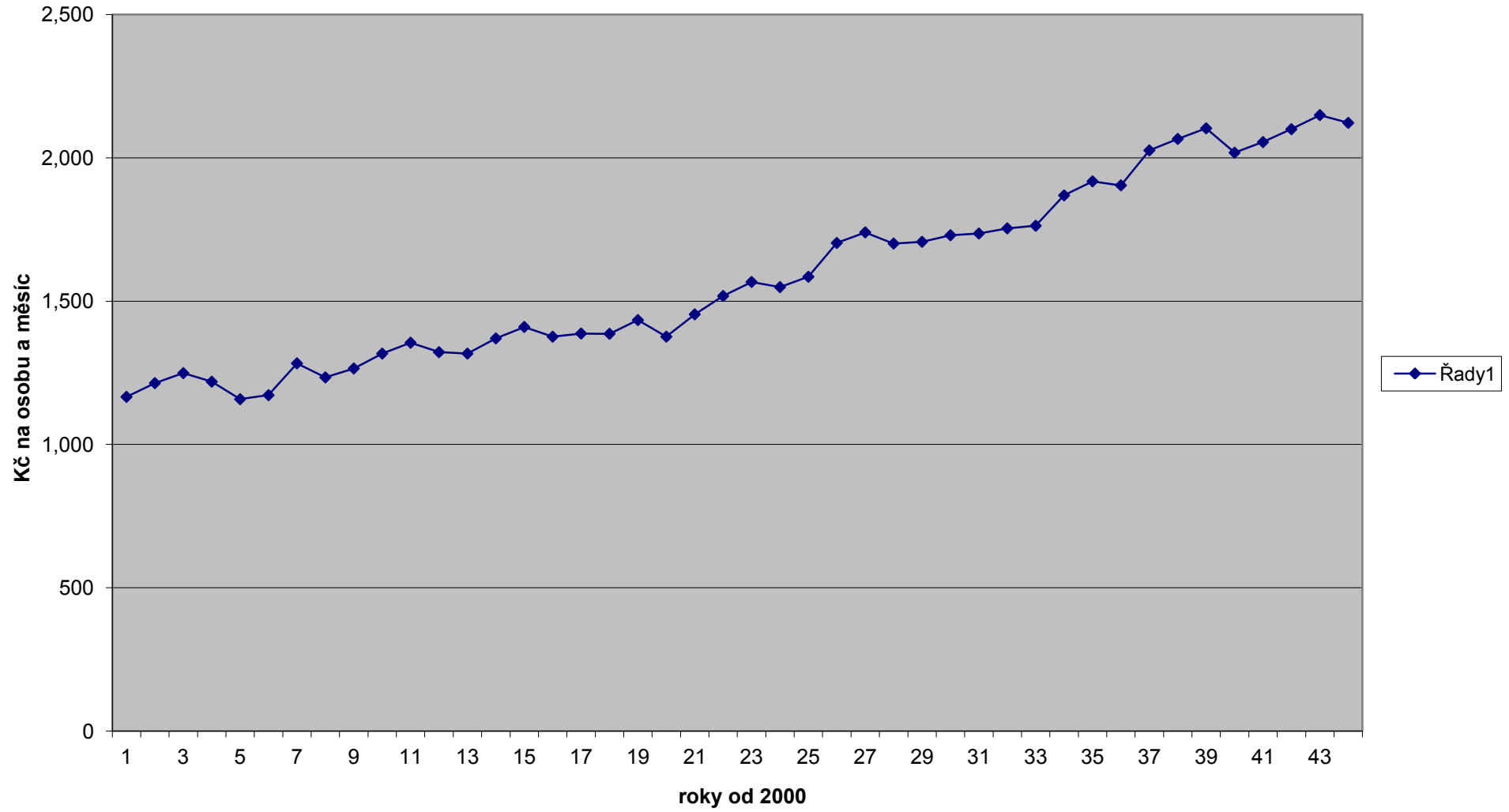
Výdaje na alkonápoje a tabák



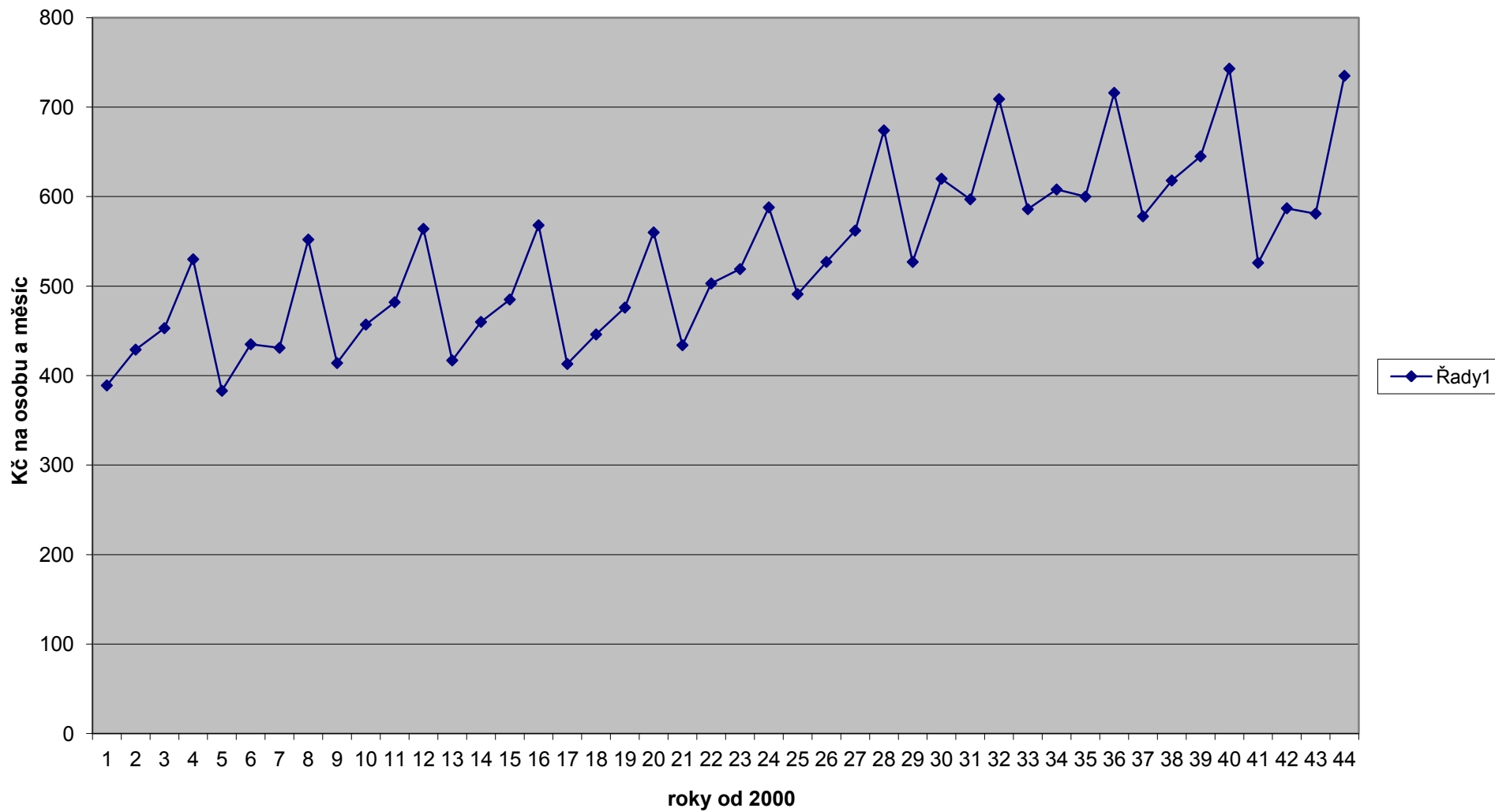
Výdaje na ošacení a obuv



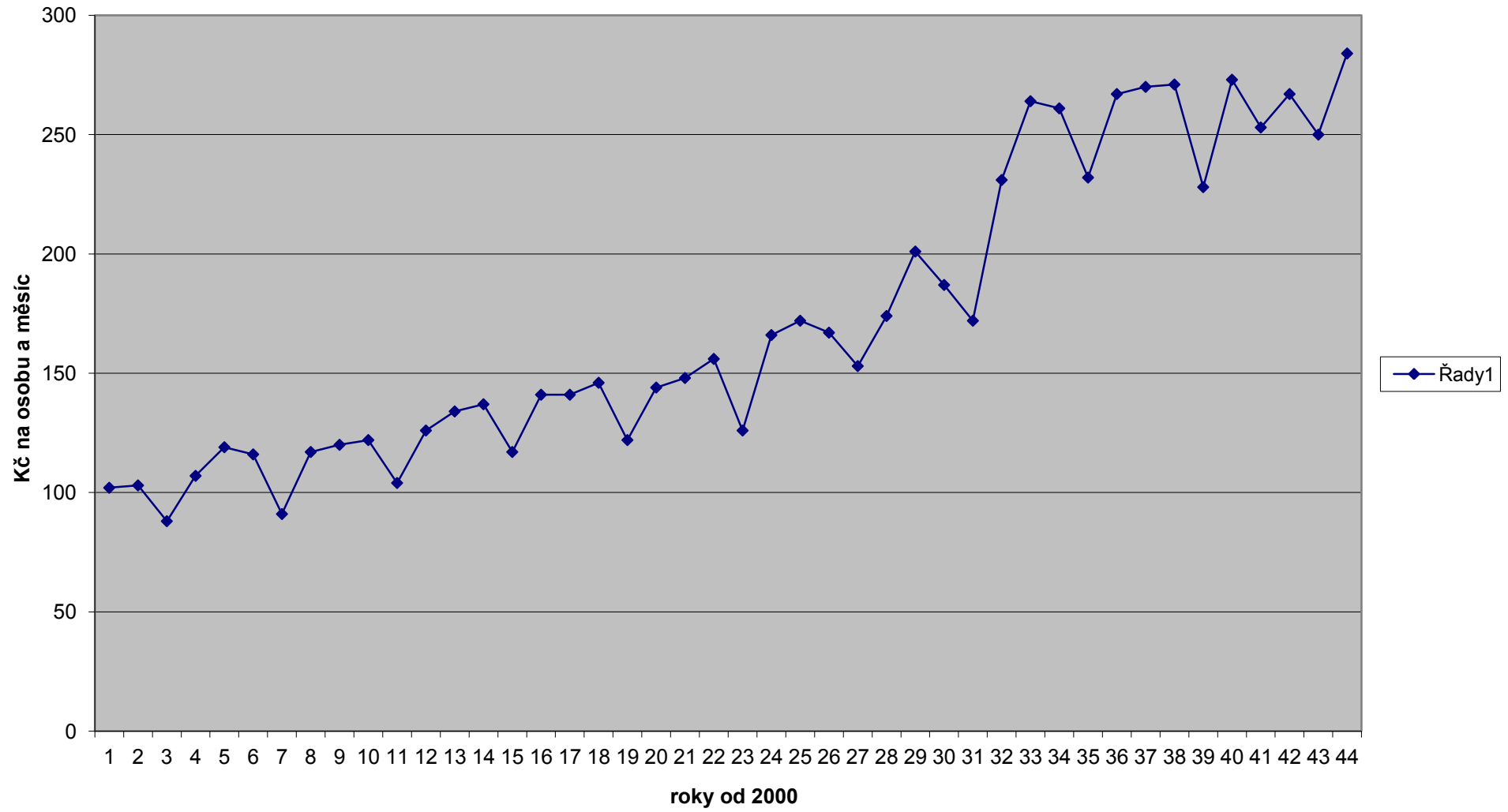
Výdaje na bydlení, energie, vodu



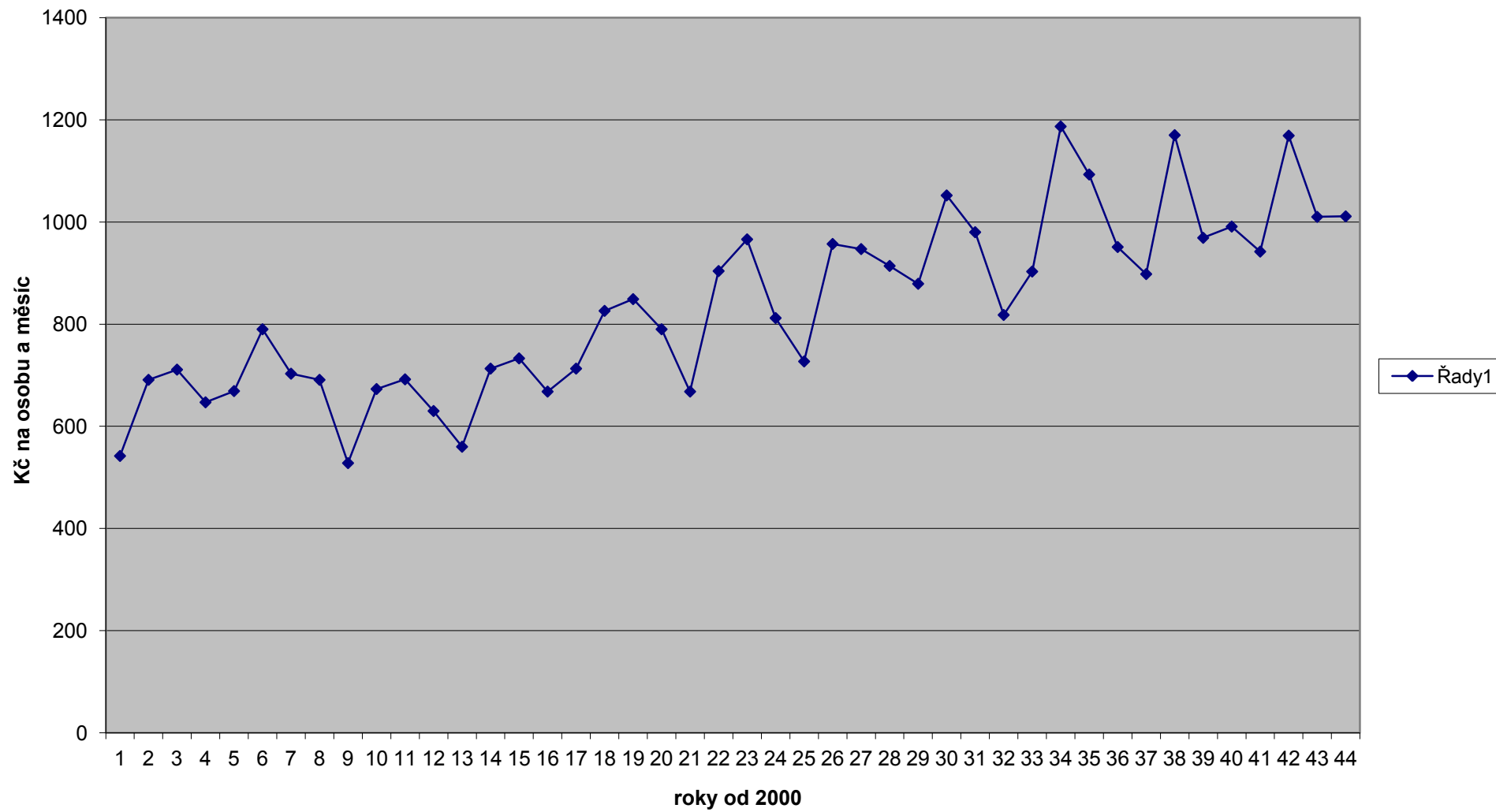
Výdaje na vybavení domácnosti



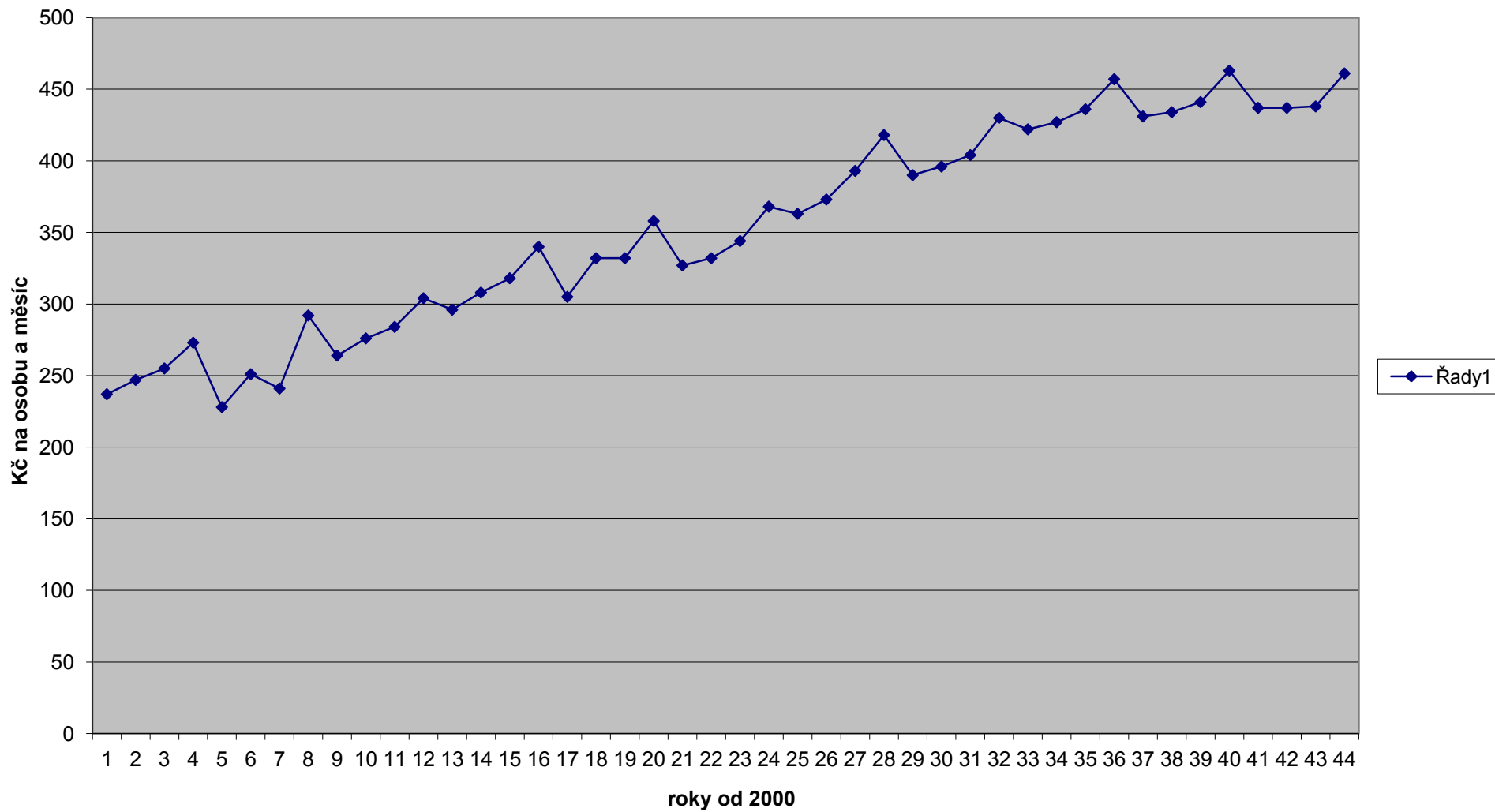
Výdaje na zdraví



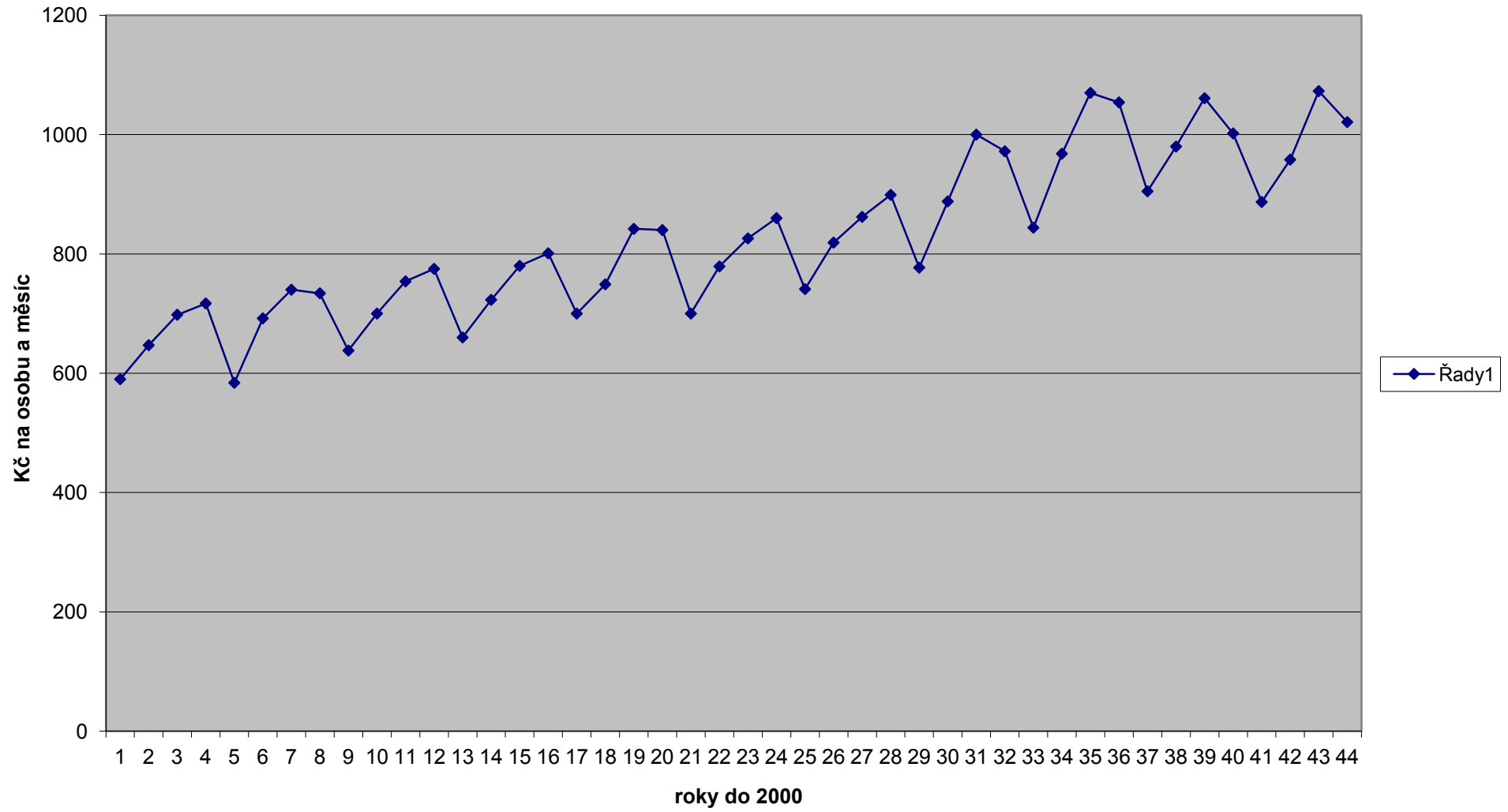
Výdaje na dopravu



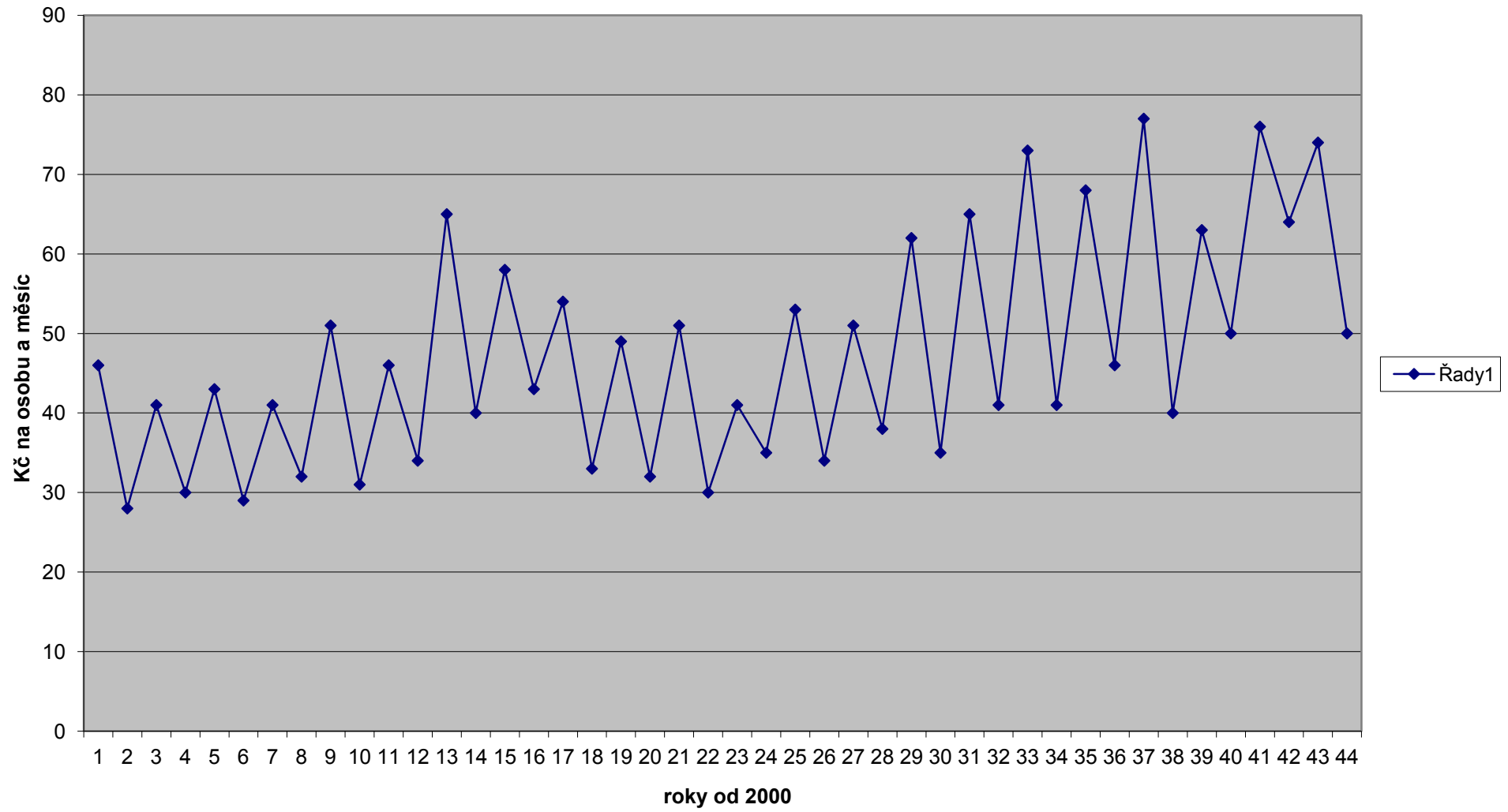
Výdaje na spoje,telekomunikace



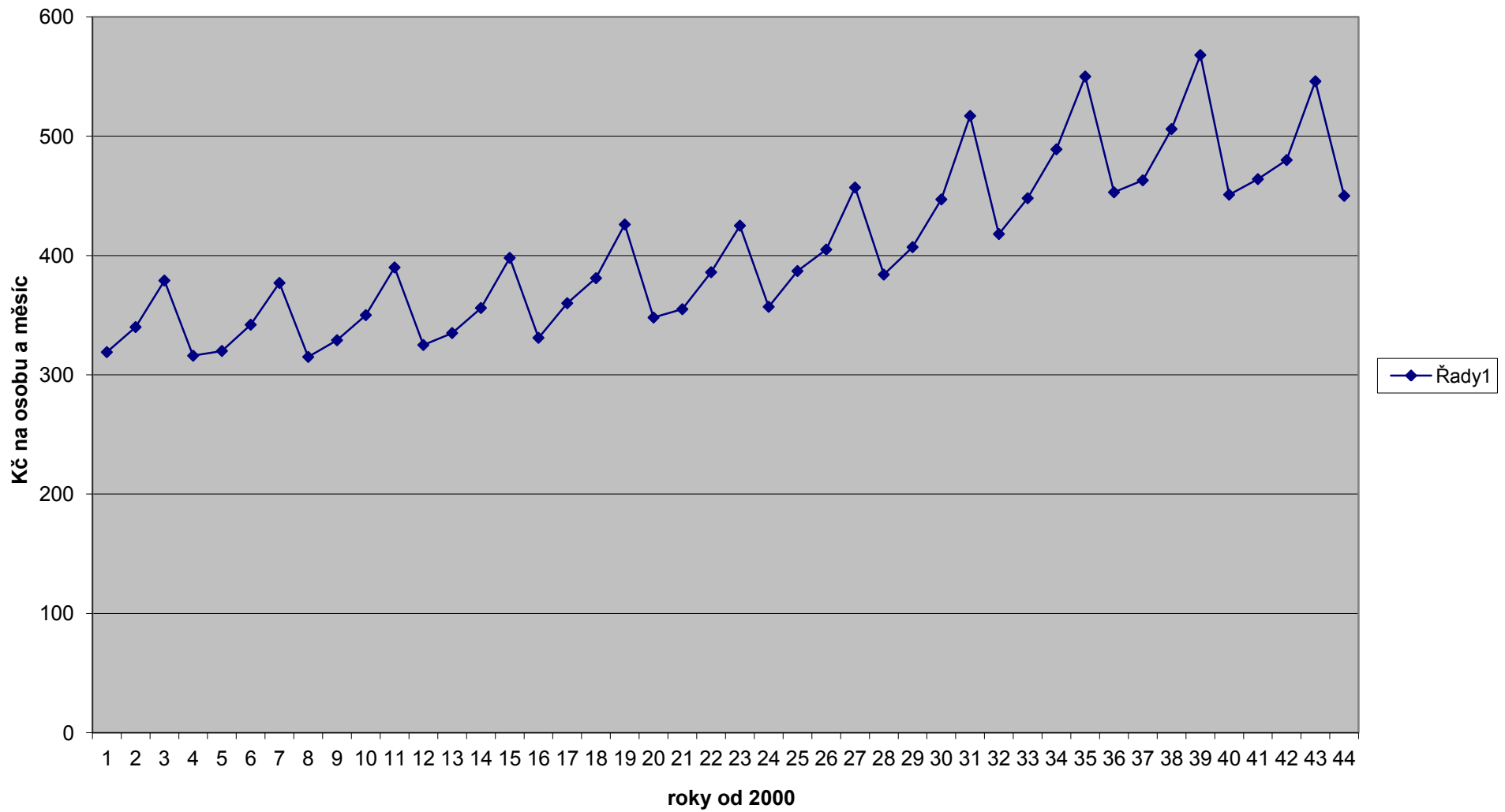
Výdaje na rekreaci a kulturu



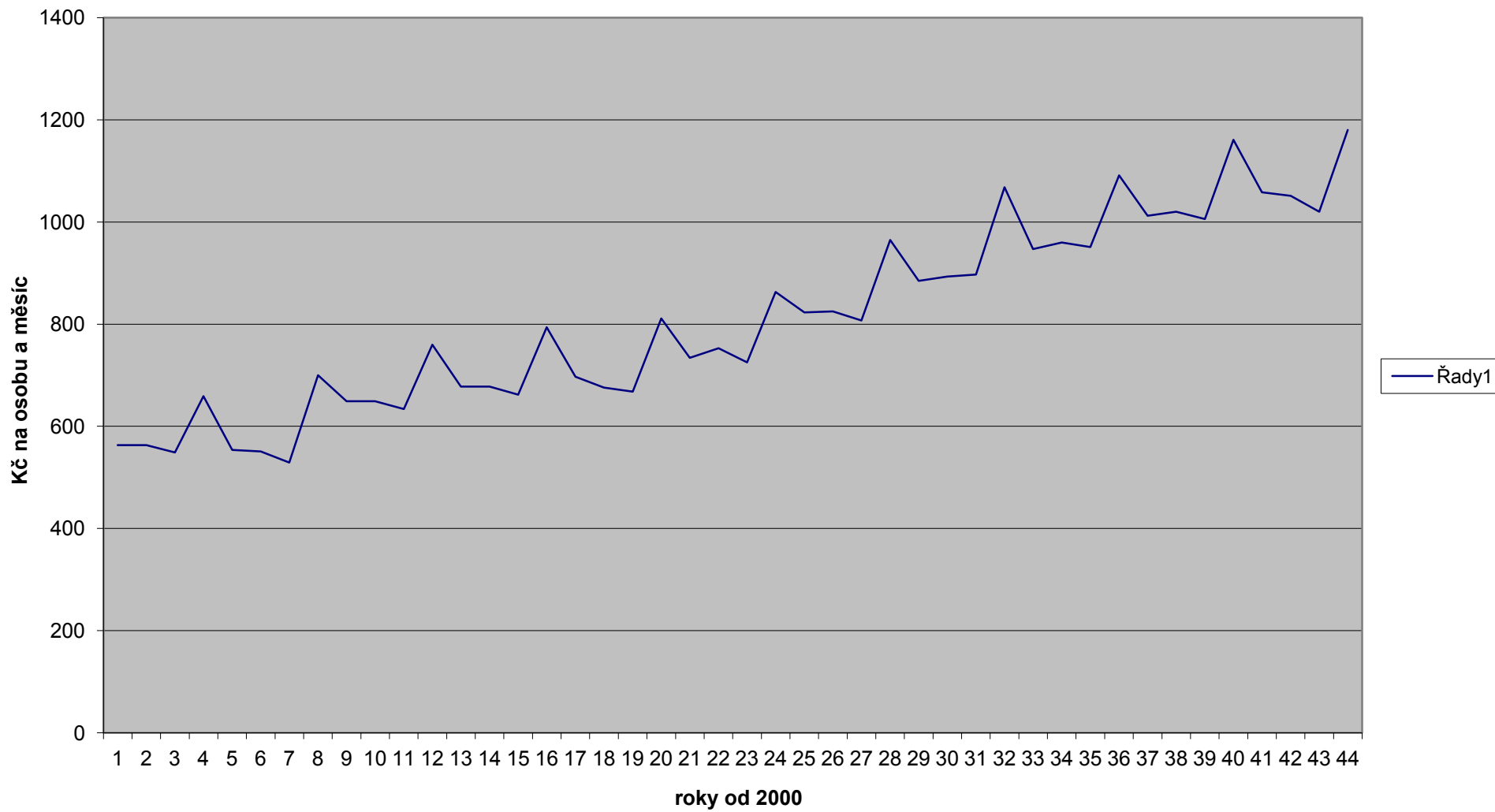
Výdaje na vzdělávání



Výdaje na stravování a ubytování



Výdaje na ostatní aktivity



očištěná řada
6,800.8
6,944.5
6,848.9
7,201.2
6,796.1
6,958.7
7,118.0
7,279.7
7,054.7
7,192.0
7,377.1
7,462.0
7,294.3
7,241.4
7,439.4
7,468.2
7,306.7
7,561.6
7,648.8
7,656.5

-370.168	7,609.4
28.735	7,896.1
12.876	8,015.2
328.557	8,276.1
-0.000	8,120.2
	8,242.7
	8,280.8
	8,257.3
	8,139.3
	8,371.8
	8,420.3
	8,432.6
	8,342.9
	8,510.4
	8,519.0
	8,556.1
	8,344.8
	8,381.3
	8,444.6
	8,572.3

čtvrtletí	P0	Q0	E0		
199901	0	0	0		
199902	0	0	0		
199903	0	0	0		
199904	0	0	0		
200001	88.6	6527.1	5,783		
200002	88.9	7069.7	6,285		
200003	89.9	7137.9	6,417	vyrovnané	podíly
200004	90.3	7498.3	6,771	klouz.prům.	skut/vyr.
200101	92.2	6430.6	5,929	92.79	0.994
200102	93.3	6973.2	6,506	93.36	0.999
200103	94.8	6861.8	6,505	94.22	1.006
200104	94.2	7529.7	7,093	94.68	0.995
200201	95.8	6425.9	6,156	95.29	1.005
200202	95.5	6987.4	6,673	95.35	1.002
200203	95.5	7130.9	6,810	95.36	1.001
200204	94.7	7608.2	7,205	95.17	0.995
200301	95.4	6684.5	6,377	95.31	1.001
200301	95.6	7220.7	6,903	95.42	1.002
200303	95.4	7389.9	7,050	95.68	0.997
200304	95.5	7790.6	7,440	96.17	0.993
200401	97.6	6924.2	6,758	97.14	1.005
200401	98.1	7270.1	7,132	97.83	1.003
200403	98.4	7452.2	7,333	98.34	1.001
200404	98.4	7796.7	7,672	98.65	0.997
200501	99.2	6936.5	6,881	99.14	1.001
200501	99.6	7590.4	7,560	99.63	1.000
200503	100.2	7661.7	7,677	100.26	0.999
200504	100.7	7985.1	8,041	100.93	0.998

očištěná řada P0
92.007
93.115
94.722
94.664
95.599
95.311
95.421
95.166
95.200
95.411
95.321
95.970
97.395
97.906
98.319
98.884
98.992
99.403
100.117
101.196

vyrovnané klouz.prům.	odchylky skut-vyr.
6636.494	0.969
6843.793	1.019
6930.959	0.990
7065.494	1.066
6873.057	0.935
7020.125	0.995
7082.528	1.007
7227.184	1.053
7091.667	0.943
7243.050	0.997
7319.099	1.010
7428.138	1.049
7266.031	0.953
7342.069	0.990
7380.338	1.010
7482.494	1.042
7363.410	0.942
7533.964	1.007
7597.335	1.008
7725.744	1.034

200601	102.0	7239.2	7,384	101.78	1.002	1.0021	1.0021	101.786
200601	102.5	7924.9	8,123	102.33	1.002	1.0020	1.0020	102.297
200603	103.2	8028.1	8,285	102.78	1.004	1.0008	1.0008	103.115
200604	102.2	8604.7	8,794	102.99	0.992	0.9951	0.9951	102.703
200701	103.6	7750.0	8,029	103.79	0.998	1.0000	1.0000	103.383
200701	105	8271.4	8,685	104.84	1.002			104.792
200703	105.9	8293.7	8,783	106.29	0.996			105.812
200704	107.2	8585.8	9,204	108.03	0.992			107.728
2008/01	111.3	7769.1	8,647	110.26	1.009			111.067
2008/02	112.1	8400.5	9,417	111.62	1.004			111.878
2008/03	112.9	8433.1	9,521	112.51	1.003			112.807
2008/04	112.2	8761.1	9,830	112.76	0.995			112.752
2009/01	113.6	7972.7	9,057	113.21	1.003			113.362
2009/02	113.7	8539.1	9,709	113.29	1.004			113.475
2009/03	113	8531.9	9,641	113.28	0.998			112.906
2009/04	112.7	8884.6	10,013	113.44	0.993			113.255
2010/01	114.4	7974.7	9,123	114.14	1.002			114.160
2010/02	115.1	8410.1	9,680	114.73	1.003			114.872
2010/03	115.2	8457.5	9,743	114.98	1.002			115.105
2010/04	115	8900.9	10,236	115.07	0.999			115.566

COICOPcelkem	COICOPcelkem	COICOPcelkem
cenovéindexy	spotřeba	výdaje

7646.660	0.947	0.9505
7882.395	1.005	1.0031
8016.077	1.001	1.0014
8217.129	1.047	1.0416
8107.402	0.956	0.9986
8236.358	1.004	
8240.828	1.006	
8314.078	1.033	
8177.588	0.950	
8335.354	1.008	
8379.766	1.006	
8479.591	1.033	
8345.639	0.955	
8481.148	1.007	
8492.237	1.005	
8550.083	1.039	
8347.738	0.955	
8429.006	0.998	
8719.567	0.970	
8718.769	1.021	

očištěná řada Q0
6,756.2
6,942.0
6,842.9
7,219.0
6,751.2
6,956.2
7,111.2
7,294.3
7,022.9
7,188.4
7,369.6
7,469.1
7,274.8
7,237.6
7,431.7
7,475.0
7,287.7
7,556.4
7,640.5
7,655.6

0.952	7,605.8
1.004	7,889.4
1.003	8,006.0
1.043	8,249.6
1.0000	8,142.4
	8,234.4
	8,270.8
	8,231.5
	8,162.5
	8,362.9
	8,409.9
	8,399.6
	8,376.4
	8,500.9
	8,508.3
	8,518.0
	8,378.4
	8,372.4
	8,434.1
	8,533.5

čtvrtletí	P0	P1	P2	P3	P4	P5	P6	P7	P8	P8	P10	P11	P12
199901	0	0	0	0	0	0	0	0	0	0	0	0	0
199902	0	0	0	0	0	0	0	0	0	0	0	0	0
199903	0	0	0	0	0	0	0	0	0	0	0	0	0
199904	0	0	0	0	0	0	0	0	0	0	0	0	0
200001	88.6	95.8	89.5	121.7	77.0	105.9	79.4	94.2	77.6	90.4	86.0	82.8	84.7
200002	88.9	95.1	89.9	121.1	77.4	105.8	80.1	97.5	77.6	89.8	86.3	83.1	84.9
200003	89.9	95.8	90.7	120.2	78.7	105.6	80.7	100.2	77.6	92.9	87.1	83.5	85.0
200004	90.3	98.1	91.1	120.3	79.2	105.5	80.8	99.6	77.6	91.1	88.2	84.2	85.3
200101	92.2	99.7	92.3	119.0	84.1	105.6	81.5	96.8	81.8	92.6	88.3	84.9	87.4
200102	93.3	102.0	93.2	119.1	84.6	105.7	81.9	99.1	81.6	93.7	88.4	85.3	88.9
200103	94.8	101.7	93.3	118.4	87.2	105.8	83.5	99.6	81.2	100.7	89.4	85.9	89.2
200104	94.2	100.9	93.8	118.8	87.5	105.9	84.3	97.1	80.8	96.0	91.3	86.8	89.9
200201	95.8	103.2	94.0	117.1	90.8	105.8	85.2	95.3	83.7	97.0	91.4	87.8	92.1
200202	95.5	101.3	95.0	116.5	90.1	105.9	86.1	97.1	84.3	96.6	91.4	88.7	92.4
200203	95.5	96.3	95.4	114.9	91.8	105.6	87.9	96.4	85.0	100.8	92.4	89.0	92.3
200204	94.7	95.7	95.4	114.4	91.3	105.4	87.8	96.6	83.2	96.2	95.1	89.1	92.7
200301	95.4	96.9	95.7	111.5	92.0	105.1	88.8	97.2	82.9	97.8	95.2	89.7	94.8
200301	95.6	97.5	95.7	111.1	93.0	104.4	90.2	96.6	82.5	96.4	95.3	90.0	94.9
200303	95.4	95.3	95.8	108.6	93.3	103.7	91.3	96.0	82.0	99.7	95.1	90.5	95.0
200304	95.5	98.2	95.8	108.8	93.0	103.3	90.6	95.9	81.9	95.4	95.7	91.0	95.5
200401	97.6	101.1	96.5	106.3	95.8	102.8	90.9	98.0	94.3	97.0	96.0	92.1	97.8
200401	98.1	101.1	98.5	106.2	95.4	102.4	93.0	99.3	93.1	96.9	96.3	95.2	99.1
200403	98.4	99.5	99.8	104.2	95.7	101.7	94.3	98.8	91.8	102.1	97.8	97.0	99.6
200404	98.4	99.3	99.5	105.5	97.1	101.2	93.8	98.1	92.5	97.1	100.9	98.2	99.5
200501	99.2	100.8	100.2	101.5	99.1	100.6	98.0	96.0	92.0	99.2	98.6	99.3	99.9
200501	99.6	101.0	99.9	101.2	99.1	100.2	100.1	99.0	96.4	98.4	98.9	99.8	100.0
200503	100.2	98.9	99.9	98.5	99.7	99.7	101.4	102.4	106.0	103.0	99.9	99.9	99.9
200504	100.7	99.3	99.9	98.7	102.0	99.4	100.7	102.5	105.5	99.5	102.7	100.9	100.1

200601	102.0	100.2	101.0	95.5	106.0	99.0	102.2	100.3	104.7	101.1	102.6	101.8	101.3
200601	102.5	101.1	101.1	94.8	106.4	98.8	104.1	102.5	105.4	100.3	102.6	102.4	101.8
200603	103.2	101.4	101.2	92.3	106.6	98.4	106.5	103.4	108.4	104.9	103.5	102.9	102.1
200604	102.2	100.7	101.2	93.6	106.0	98.5	106.5	100.3	108.6	99.8	105.2	103.3	102.2
200701	103.6	103.2	104.6	92.9	108.4	98.4	106.7	99.1	108	101.7	105.3	104.2	103.5
200701	105	104.9	109.4	94.4	109.3	98.6	109.9	102	107.6	100.9	105.3	105	104.1
200703	105.9	104.3	114.7	92.2	110.2	98.5	109.2	103	106.4	103.4	105.9	105.8	104
200704	107.2	110.1	117.1	93.8	111.5	98.6	108.8	103.7	105.1	99.9	107.3	107	104.2
2008/01	111.3	115	118.7	91.3	118.4	98.8	142	105.7	105.1	102.6	107.6	111.3	108.5
2008/02	112.1	115.6	119.4	93.1	120.1	99.3	141.8	106.9	104.8	101.8	107.7	112.7	108.8
2008/03	112.9	114	123.7	91.3	122.1	99.2	143.7	106.4	103.8	104.1	108.9	113.7	109.2
2008/04	112.2	112.3	128.1	93.4	124	98.8	143.6	98.3	101.7	100.9	111.1	114.3	109.2
2009/01	113.6	113.5	129.5	90.2	130.1	98.8	141.4	95.4	100.6	101.7	111.3	114.9	110.5
2009/02	113.7	111.5	130.5	90.8	130.2	98.8	136.4	98.6	100.2	101.2	111.3	115.5	110.8
2009/03	113	107	130.5	87.9	129.9	98.2	137	100	98.1	103.1	111.7	115.8	114.4
2009/04	112.7	106.8	131.2	90.7	129.6	98	137.6	99.2	97.4	99.7	112.8	116	111.3
2010/01	114.4	110.8	134.5	87.6	131.5	98.2	141.7	100.2	97.7	100.5	112.9	117.6	111.9
2010/02	115.1	111.5	136.1	88.9	132	98.2	145.4	101.8	97.3	100.1	112.9	118.4	111.8
2010/03	115.2	110.9	137.8	85.7	132.6	97.9	147.3	101	96.6	102.5	113.6	118.7	112.3
2010/04	115	112	137.6	88	132.6	97.4	146.7	100.6	96.5	98.5	115.1	118.8	112.6
potraviny,neal. alko,tabák oděvy,obuv bydlení,energie vybavení dom. zdraví doprava spoje,telekom rekreace,kultura vzdělávání strav,ubytování ostatní													
Ogurčák		Románek	Štrublík	Čekal D.	Hanzal P.	Komárek O.	Možná J.	Faith M.	Raková G.	Severová D.	Stuchlík A.	Šafaříková M.	
Predný		Staník	Vlach	Demela J.	Haranta M.	Senciová S.	Olišáková A.	Frantík J.	Ottteová G.	Straková J.	Števkó J.	Tomanová	

M1	M2	Q0	Q1	Q2	Q3	Q4	Q5	Q6	Q7	Q8	Q9	Q10	Q11
		0	0	0	0	0	0	0	0	0	0	0	0
		0	0	0	0	0	0	0	0	0	0	0	0
		0	0	0	0	0	0	0	0	0	0	0	0
		0	0	0	0	0	0	0	0	0	0	0	0
5,783	0	6527.1	1377.9	202.2	268.7	1514.3	367.3	128.5	575.4	305.4	652.7	53.5	385.3
6,285	0	7069.7	1491.1	219.1	336.1	1568.5	405.5	128.6	708.7	318.3	720.5	32.4	409.1
6,417	0	7137.9	1489.6	228.2	299.5	1587.0	429.0	109.0	709.6	328.6	751.3	47.1	453.9
6,771	0	7498.3	1536.2	248.1	450.5	1539.1	502.4	132.4	649.6	351.8	787.0	34.0	375.3
5,929	0	6430.6	1372.1	192.8	273.1	1376.9	362.7	146.0	691.1	278.7	630.7	48.7	376.9
6,506	0	6973.2	1461.8	213.5	367.8	1385.3	411.5	141.6	797.2	307.6	738.5	32.8	400.9
6,505	0	6861.8	1459.2	221.9	319.3	1471.3	407.4	109.0	705.8	296.8	734.9	45.9	438.9
7,093	0	7529.7	1590.7	242.0	500.0	1410.3	521.2	138.8	711.6	361.4	764.6	35.0	362.9
6,156	0	6425.9	1316.9	197.9	299.7	1393.2	391.3	140.8	554.0	315.4	657.7	55.8	374.7
6,673	0	6987.4	1441.3	212.6	376.0	1461.7	431.5	141.7	693.1	327.4	724.6	33.9	394.6
6,810	0	7130.9	1525.4	223.3	336.8	1476.0	456.4	118.3	717.8	334.1	748.0	49.8	438.2
7,205	0	7608.2	1620.7	243.2	508.7	1448.0	535.1	143.5	652.2	365.4	805.6	35.8	364.8
6,377	0	6684.5	1438.6	197.5	298.7	1431.5	396.8	150.9	576.1	357.1	674.8	68.3	373.5
6,903	0	7220.7	1535.4	215.3	372.6	1473.1	440.6	151.9	738.1	373.3	750.0	42.0	395.6
7,050	0	7389.9	1581.3	226.5	337.0	1511.3	467.7	128.1	763.5	387.8	782.3	61.0	439.8
7,440	0	7790.6	1620.2	246.3	506.4	1479.6	549.9	155.6	696.6	415.1	839.6	44.9	363.7
6,758	0	6924.2	1436.2	191.7	330.2	1447.8	401.8	155.1	727.6	323.4	721.6	56.3	390.9
7,132	0	7270.1	1525.2	207.1	387.0	1452.8	435.5	157.0	831.8	356.6	773.0	34.3	400.2
7,333	0	7452.2	1548.7	217.4	361.8	1498.4	468.0	129.4	859.3	361.7	824.7	50.1	439.2
7,672	0	7796.7	1629.4	234.2	532.7	1417.1	553.4	153.5	805.3	387.0	865.1	31.7	354.4
6,881	0	6936.5	1472.2	197.6	323.2	1467.2	431.4	151.0	695.8	355.4	705.6	51.7	357.5
7,560	0	7590.4	1540.6	209.2	428.9	1531.8	502.0	155.8	913.1	344.4	791.7	30.3	386.8
7,677	0	7661.7	1576.3	221.2	363.5	1571.7	520.6	124.3	943.4	324.5	801.9	41.0	425.4
8,041	0	7985.1	1664.7	242.2	555.2	1518.6	591.5	164.8	792.2	348.8	864.3	34.1	353.8

7,384	0	7239.2	1489.0	201.0	363.4	1495.3	496.0	168.3	724.8	346.7	732.9	51.7	380.2
8,123	0	7924.9	1638.0	221.6	456.8	1600.6	533.4	160.4	933.7	353.9	816.6	33.1	395.5
8,285	0	8028.1	1662.7	230.2	426.9	1632.3	571.1	143.7	915.9	362.5	821.7	49.3	444.1
8,794	0	8604.7	1768.6	253.0	630.3	1604.7	684.3	163.4	911.3	384.9	900.8	36.1	371.7
8,029		7750.0	1554.3	204.6	405.8	1574.7	535.6	188.4	887.0	361.1	764.0	58.9	390.6
8,685		8271.4	1651.1	222.1	491.5	1582.8	628.8	170.2	1031.4	368.0	880.1	33.2	425.7
8,783		8293.7	1663.5	222.3	459.9	1575.3	606.1	157.5	951.5	379.7	967.1	61.4	488.7
9,204		8585.8	1712.1	237.4	639.7	1573.1	719.1	212.3	788.8	409.1	973.0	38.2	390.7
8,647		7769.1	1542.6	192.1	433.7	1489.0	593.1	185.9	854.3	401.5	822.6	67.8	402.5
9,417		8400.5	1627.2	208.5	511.3	1556.2	612.3	184.1	1110.4	407.4	950.9	38.1	433.9
9,521		8433.1	1657.0	215.0	491.8	1570.8	604.8	161.4	1027.3	420.0	1027.9	62.4	483.7
9,830		8761.1	1769.4	223.3	660.6	1535.5	724.7	185.9	967.4	449.4	1044.6	41.4	396.3
9,057		7972.7	1548.9	184.6	443.5	1557.3	585.0	190.9	941.3	428.4	889.9	69.2	403.0
9,709		8539.1	1665.5	206.1	525.3	1586.8	625.5	198.7	1186.6	433.1	968.4	35.9	438.1
9,641		8531.9	1720.6	213.0	498.3	1618.9	656.8	166.4	969.0	449.5	1029.1	56.4	490.5
10,013		8884.6	1823.0	225.6	681.4	1557.1	758.2	198.4	999.0	475.4	1005.0	44.3	388.8
9,123		7974.7	1614.6	178.4	452.1	1562.7	535.6	178.5	940.1	447.3	882.6	67.3	394.6
9,680		8410.1	1660.1	194.0	508.4	1590.9	597.8	183.6	1148.3	449.1	957.0	56.7	405.4
9,743		8457.5	1692.5	200.3	521.6	1620.7	593.5	169.7	1000.0	453.4	1046.8	65.1	460.0
10,236		8900.9	1771.4	216.6	725.0	1600.3	754.6	193.6	1005.0	477.7	1036.5	43.4	378.8
CELKEM			potraviny,Neal.	alko,tabák	oděvy,obuv	bydlení,energie	vybavení dom.	zdraví	doprava	spoje,telekom	rekreace,kultura	vzdělávání	strav,ubytování

Q12	E0	E1	E2	E3	E4	E5	E6	E7	E8	E9	E10	E11	E12
0	0	0	0	0	0	0	0	0	0	0	0	0	0
0	0	0	0	0	0	0	0	0	0	0	0	0	0
0	0	0	0	0	0	0	0	0	0	0	0	0	0
0	0	0	0	0	0	0	0	0	0	0	0	0	0
664.7	5,783	1,320	181	327	1,166	389	102	542	237	590	46	319	563
663.1	6,285	1,418	197	407	1,214	429	103	691	247	647	28	340	563
645.9	6,417	1,427	207	360	1,249	453	88	711	255	698	41	379	549
772.6	6,771	1,507	226	542	1,219	530	107	647	273	717	30	316	659
633.9	5,929	1,368	178	325	1,158	383	119	669	228	584	43	320	554
619.8	6,506	1,491	199	438	1,172	435	116	790	251	692	29	342	551
593.0	6,505	1,484	207	378	1,283	431	91	703	241	740	41	377	529
778.6	7,093	1,605	227	594	1,234	552	117	691	292	734	32	315	700
704.7	6,156	1,359	186	351	1,265	414	120	528	264	638	51	329	649
702.4	6,673	1,460	202	438	1,317	457	122	673	276	700	31	350	649
686.9	6,810	1,469	213	387	1,355	482	104	692	284	754	46	390	634
819.8	7,205	1,551	232	582	1,322	564	126	630	304	775	34	325	760
715.2	6,377	1,394	189	333	1,317	417	134	560	296	660	65	335	678
714.4	6,903	1,497	206	414	1,370	460	137	713	308	723	40	356	678
696.8	7,050	1,507	217	366	1,410	485	117	733	318	780	58	398	662
831.4	7,440	1,591	236	551	1,376	568	141	668	340	801	43	331	794
712.7	6,758	1,452	185	351	1,387	413	141	713	305	700	54	360	697
682.1	7,132	1,542	204	411	1,386	446	146	826	332	749	33	381	676
670.7	7,333	1,541	217	377	1,434	476	122	849	332	842	49	426	668
815.1	7,672	1,618	233	562	1,376	560	144	790	358	840	32	348	811
734.7	6,881	1,484	198	328	1,454	434	148	668	327	700	51	355	734
753.0	7,560	1,556	209	434	1,518	503	156	904	332	779	30	386	753
725.7	7,677	1,559	221	358	1,567	519	126	966	344	826	41	425	725
862.1	8,041	1,653	242	548	1,549	588	166	812	368	860	35	357	863

812.4	7,384	1,492	203	347	1,585	491	172	727	363	741	53	387	823
810.4	8,123	1,656	224	433	1,703	527	167	957	373	819	34	405	825
790.4	8,285	1,686	233	394	1,740	562	153	947	393	862	51	457	807
944.2	8,794	1,781	256	590	1,701	674	174	914	418	899	38	384	965
855.1	8,029	1,604	214	377	1,707	527	201	879	390	777	62	407	885
857.8	8,685	1,732	243	464	1,730	620	187	1,052	396	888	35	447	893
862.5	8,783	1,735	255	424	1,736	597	172	980	404	1000	65	517	897
1025.0	9,204	1,885	278	600	1,754	709	231	818	430	972	41	418	1068
872.8	8,647	1,774	228	396	1,763	586	264	903	422	844	73	448	947
882.4	9,417	1,881	249	476	1,869	608	261	1,187	427	968	41	489	960
870.8791	9,521	1,889	266	449	1,918	600	232	1093	436	1070	68	550	951
999.1	9,830	1,987	286	617	1,904	716	267	951	457	1054	46	453	1091
915.8	9,057	1,758	239	400	2,026	578	270	898	431	905	77	463	1012
920.6	9,709	1,857	269	477	2,066	618	271	1,170	434	980	40	506	1020
879.3706	9,641	1,841	278	438	2,103	645	228	969	441	1061	63	568	1006
1043.1	10,013	1,947	296	618	2,018	743	273	991	463	1002	50	451	1161
945.5	9,123	1789	240	396	2055	526	253	942	437	887	76	464	1058
940.1	9,680	1851	264	452	2100	587	267	1169	437	958	64	480	1051
908.3	9,743	1877	276	447	2149	581	250	1010	438	1073	74	546	1020
1048.0	10,236	1984	298	638	2122	735	284	1011	461	1021	50	450	1180
ostatní	CELKEM	potraviny,Neal.	alko,tabák	oděvy,obuv	bydlení,energie	vybavení dom.	zdraví	doprava	spoje,telekom	rekreace,kultura	vzdělávání	strav,ubytování	ostatní
		Belej	Hurda	Pospíchalová	Lipták	Sklenář	Gattnerová	Jandl	Pechmanová	Čevorová	Holub	Juřicová	Truhan M.
		Hanzal	Piknerová	Stehnová	Šram	Jelínková	Glogarová	Kadlec	Petrisková	Opluštilová	Charvát	Mazurková	Šrubař J.
						Bulko							
						Skalická							

čtvrtletí
199901
199902
199903
199904
200001
200002
200003
200004
200101
200102
200103
200104
200201
200202
200203
200204
200301
200301
200303
200304
200401
200401
200403
200404
200501
200501
200503
200504

200601
200601
200603
200604

200701
200701
200703
200704

2008/01
2008/02
2008/03
2008/04

2009/01
2009/02
2009/03
2009/04

2010/01
2010/02
2010/03
2010/04