

poč.hodn.	alfa =	0.4	gama =	0.1	delta=	0.4
-----------	--------	-----	--------	-----	--------	-----

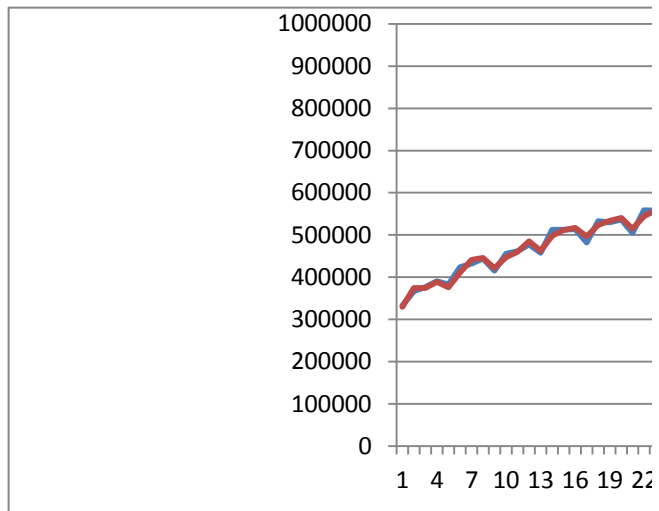
počáteční hodnoty parametrů jsou spočteny pomocí výpočetních postupů

nobs	52	L0	T0	0	S01
		313427	9614.31	50394.8	S02
				32122.3	S03
				37107.8	S04

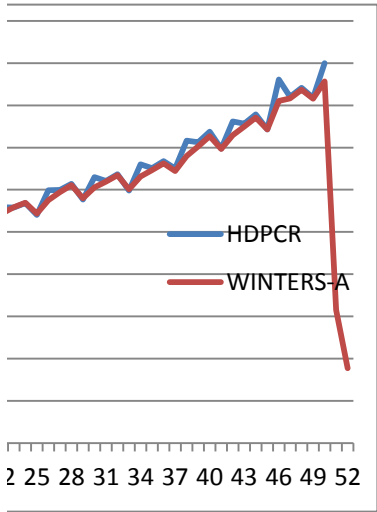
DATE	NOBS	HDPCR	WINTERS-A	Lt	Tt	St	rezidua
1995Q1	1	332995	329412	327022.8	10012.5	2388.9	3583
1995Q2	2	366618	374110	328710.4	9180.0	45399.9	-7492
1995Q3	3	376688	374285	340560.5	9447.0	33724.4	2403
1995Q4	4	390221	389103	351249.8	9571.2	37853.2	1118
1996Q1	5	382859	375499	368202.9	10309.4	7295.8	7360
1996Q2	6	423953	410826	399685.5	12426.7	11140.3	13127
1996Q3	7	432152	441282	401968.2	11412.3	39313.5	-9130
1996Q4	8	444324	445325	412268.1	11301.1	33057.0	-1001
1997Q1	9	415593	421075	417434.6	10687.6	3640.8	-5482
1997Q2	10	455790	447057	433938.5	11269.2	13118.1	8733
1997Q3	11	461902	459903	447429.3	11491.4	12473.3	1999
1997Q4	12	477809	485162	450750.6	10674.4	34411.4	-7353
1998Q1	13	457925	462685	462218.0	10753.7	467.3	-4760
1998Q2	14	512225	498182	485179.6	11974.5	13002.6	14043
1998Q3	15	512408	511639	498008.4	12059.9	13630.7	769
1998Q4	16	513925	517027	506621.7	11715.3	10405.3	-3102
1999Q1	17	481895	496437	505664.3	10448.0	-9227.3	-14542
1999Q2	18	532968	523810	517237.5	10560.5	6572.6	9158
1999Q3	19	529465	533546	523263.7	10107.1	10282.1	-4081
1999Q4	20	536469	540261	529157.8	9685.8	11102.9	-3792
2000Q1	21	504479	514804	530914.5	8892.9	-16110.6	-10325
2000Q2	22	558691	544159	543697.7	9281.9	460.9	14532
2000Q3	23	557780	558418	552270.7	9211.0	6147.3	-638
2000Q4	24	568219	569495	560063.8	9069.2	9431.3	-1276
2001Q1	25	540124	543379	561659.4	8321.9	-18280.5	-3255
2001Q2	26	598842	575298	575712.6	8895.0	-414.6	23544
2001Q3	27	599262	594152	590285.0	9462.7	3867.4	5110
2001Q4	28	613986	611073	602984.1	9786.4	8089.1	2913
2002Q1	29	576665	579476	599630.2	8472.3	-20154.4	-2811
2002Q2	30	630141	605588	607500.3	8412.1	-1912.1	24553
2002Q3	31	621004	619022	618114.9	8632.4	906.9	1982
2002Q4	32	636622	634459	629150.2	8872.7	5309.1	2163
2003Q1	33	598385	601237	623292.1	7399.6	-22055.5	-2852
2003Q2	34	660401	631720	632754.3	7605.8	-1034.0	28681
2003Q3	35	650791	646348	645297.3	8099.6	1050.2	4443
2003Q4	36	667533	662770	658688.6	8628.7	4081.9	4763
2004Q1	37	650616	644080	661777.4	8074.7	-17697.9	6536

2004Q2	38	716444	679554	677016.6	8791.2	2537.7	36890
2004Q3	39	712711	702654	696982.7	9908.7	5670.9	10057
2004Q4	40	737591	726917	718751.1	11094.7	8166.1	10674
2005Q1	41	697345	696858	714230.9	9533.2	-17373.1	487
2005Q2	42	762115	728836	724348.6	9591.6	4487.9	33279
2005Q3	43	756632	749376	742001.8	10397.8	7374.7	7256
2005Q4	44	778304	771020	760493.0	11207.1	10527.0	7284
2006Q1	45	742621	742549	759873.6	10024.5	-17324.9	72
2006Q2	46	861462	810088	793212.2	12355.9	16876.1	51374
2006Q3	47	820093	816480	809582.9	12757.4	6896.8	3613
2006Q4	48	841083	836990	826887.5	13212.1	10103.0	4093
2007Q1	49	817704	815354	831112.4	12313.4	-15758.3	2350
2007Q2	50	899674	856700	845375.6	12508.4	11324.4	42974
2007Q3	51		314914	507979.9	-22482.1	-193066.3	
2007Q4	52		177262	288540.0	-42177.8	-111278.0	
		<b>588310</b>	<b>582110</b>				<b>6200</b>
		<i>yprum</i>	<i>yvprum</i>				<i>ME</i>

abs.rezidua	rezidua <sup>2</sup>
3583	12840242
7492	56135094
2403	5774925
1118	1250033
7360	54174710
13127	172322602
9130	83350460
1001	1002221
5482	30057035
8733	76273167
1999	3997698
7353	54067542
4760	22660367
14043	197198119
769	591188
3102	9622342
14542	211468486
9158	83867713
4081	16653154
3792	14376965
10325	106604093
14532	211190428
638	407022
1276	1628526
3255	10594113
23544	554320742
5110	26108585
2913	8484209
2811	7900763
24553	602835399
1982	3929151
2163	4677021
2852	8131593
28681	822580377
4443	19744192
4763	22681718
6536	42724905



36890	1360850123
10057	101150708
10674	113929635
487	237342
33279	1107463951
7256	52642309
7284	53057207
72	5225
51374	2639258959
3613	13056205
4093	16748597
2350	5521873
42974	1846762086
<b>9476</b>	<b>217458222</b>
<b>MAE</b>	<b>MSE</b>
	<b>14746</b>
	<b>RMSE</b>



poč.hodn.	alfa =	<b>0.4</b>	gama =	<b>0.1</b>	delta=	<b>0.4</b>
-----------	--------	------------	--------	------------	--------	------------

počáteční hodnoty parametrů jsou spočteny pomocí výpočetních postupů

nobs	<b>52</b>
------	-----------

L0	T0	<b>0</b>
<b>313427</b>	<b>9614.31</b>	<b>50394.8</b>
		<b>32122.3</b>
		<b>37107.8</b>

DATE	NOBS	HDPCR	rezidua	WINTERS-A	Lt	Tt	St
1995Q1	1	332995	3583	329412	327022.8	10012.5	2388.9
1995Q2	2	366618	-7492	374110	328710.4	9180.0	45399.9
1995Q3	3	376688	2403	374285	340560.5	9447.0	33724.4
1995Q4	4	390221	1118	389103	351249.8	9571.2	37853.2
1996Q1	5	382859	7074	375785	368680.6	10357.2	7104.7
1996Q2	6	423953	-175	424128	378843.9	10337.8	45283.6
1996Q3	7	432152	3329	428823	392880.1	10707.6	35943.4
1996Q4	8	444324	1038	443286	404741.0	10823.0	38545.1
1997Q1	9	415593	-2547	418140	412733.7	10539.9	5406.5
1997Q2	10	455790	-4596	460386	418166.7	10029.2	42219.4
1997Q3	11	461902	-805	462707	427301.0	9939.7	35406.4
1997Q4	12	477809	728	477081	438050.0	10020.7	39030.7
1998Q1	13	457925	1601	456324	449849.8	10198.6	6474.0
1998Q2	14	512225	3585	508640	464031.3	10596.9	44609.2
1998Q3	15	512408	854	511554	475577.5	10691.8	35976.1
1998Q4	16	513925	-4095	518020	481719.3	10236.8	36300.7
1999Q1	17	481895	-5953	487848	485342.1	9575.4	2505.6
1999Q2	18	532968	-2361	535329	492294.0	9313.1	43035.1
1999Q3	19	529465	-2923	532388	498359.8	8988.3	34027.7
1999Q4	20	536469	-2585	539054	504476.2	8701.1	34577.5
2000Q1	21	504479	-4033	508512	508695.8	8253.0	-183.4
2000Q2	22	558691	-465	559156	516431.6	8201.3	42724.8
2000Q3	23	557780	-317	558097	524280.7	8166.0	33816.4
2000Q4	24	568219	430	567789	532924.6	8213.8	34864.3
2001Q1	25	540124	-299	540423	540806.0	8180.6	-382.8
2001Q2	26	598842	2567	596275	551838.8	8465.8	44436.1
2001Q3	27	599262	1851	597411	562361.1	8671.5	35050.2
2001Q4	28	613986	2912	611074	574268.2	8995.0	36805.7
2002Q1	29	576665	-2238	578903	580777.1	8746.4	-1874.5
2002Q2	30	630141	-1375	631516	587996.0	8593.7	43519.7
2002Q3	31	621004	-3829	624833	592335.3	8168.2	32497.6
2002Q4	32	636622	-247	636869	600228.7	8140.7	36640.7
2003Q1	33	598385	-2920	601305	605125.5	7816.3	-3820.9
2003Q2	34	660401	1418	658983	614517.6	7973.9	44465.2
2003Q3	35	650791	-1511	652302	620812.3	7806.0	31490.0
2003Q4	36	667533	819	666714	629527.9	7897.0	37186.5
2004Q1	37	650616	6124	644492	644229.7	8577.4	262.0

2004Q2	38	716444	6902	709542	660475.8	9344.3	49066.4
2004Q3	39	712711	4104	708607	674380.5	9800.3	34226.2
2004Q4	40	737591	5841	731750	690670.3	10449.3	41080.2
2005Q1	41	697345	-1453	698798	699504.9	10287.8	-706.8
2005Q2	42	762115	1172	760943	711095.1	10418.1	49847.8
2005Q3	43	756632	321	756311	721870.2	10453.8	34440.5
2005Q4	44	778304	1764	776540	734283.9	10649.8	42256.1
2006Q1	45	742621	-578	743199	744291.3	10585.5	-1092.2
2006Q2	46	861462	20425	841037	777571.8	12855.0	63464.8
2006Q3	47	820093	-1719	821812	788517.1	12664.0	33294.6
2006Q4	48	841083	-848	841931	800239.4	12569.9	41691.1
2007Q1	49	817704	2155	815549	815204.1	12809.4	344.7
2007Q2	50	899674	2950	896724	831291.7	13137.2	65431.8
2007Q3	51			0			
2007Q4	52			0			
		<b>174292</b>	<b>601</b>	<b>173692</b>			
		<i>yprum</i>	<i>ME</i>				

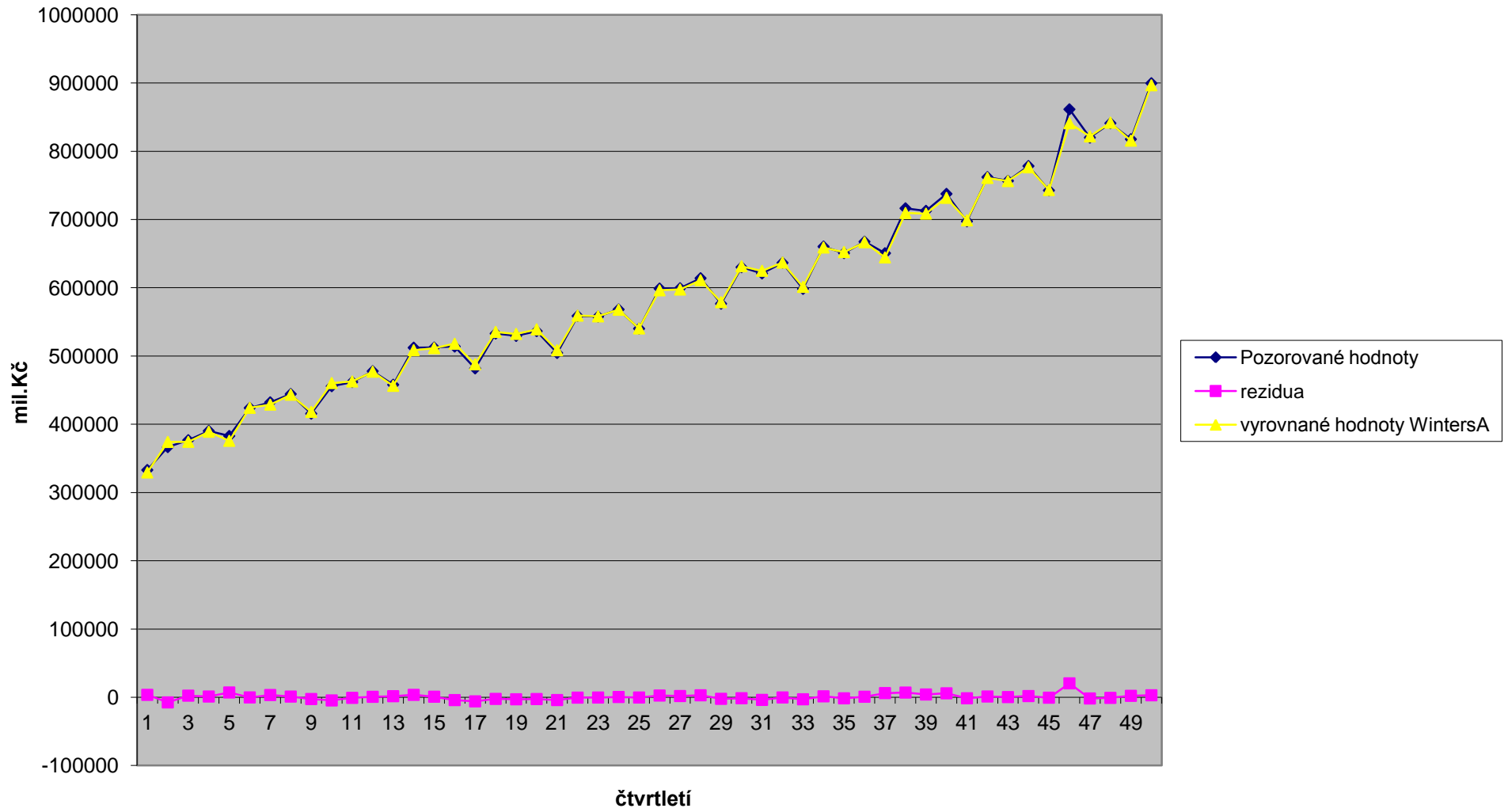
S01  
S02  
S03  
S04

abs.rezidua	rezidua <sup>2</sup>
3583	12840242
7492	56135094
2403	5774925
1118	1250033
7074	50036961
175	30452
3329	11079087
1038	1077286
2547	6488282
4596	21124913
805	648752
728	530449
1601	2563841
3585	12849214
854	730077
4095	16768939
5953	35433997
2361	5574861
2923	8541162
2585	6680867
4033	16268447
465	216627
317	100498
430	185007
299	89513
2567	6589539
1851	3425289
2912	8480466
2238	5006587
1375	1889810
3829	14660615
247	61210
2920	8523810
1418	2011374
1511	2284091
819	670157
6124	37507575



6902	47635189	
4104	16845356	
5841	34111868	
1453	2111689	
1172	1373828	
321	103252	
1764	3111491	
578	334225	
20425	417199224	
1719	2954061	
848	718336	
2155	4645223	
2950	8705443	
<b>785</b>	<b>13090013</b>	<b>3618</b>
<b>MAE</b>	<b>MSE</b>	<b>RMSE</b>

Wintersova metoda A - C943: HDP ČR



poč.hodn.	alfa =	0.4	gama =	0.1	delta=	0.4
-----------	--------	-----	--------	-----	--------	-----

počáteční hodnoty parametrů jsou převzaty z regresního výpočtu

L0	T0	0
244622	7864.47	2179.63
		-3875.5
		2987.62

QUARTER	NOBS	DEPOSITS	rezidua	WINTERS-A	Lt	Tt	St
1993Q1	1	179342.9	-26332	205675	223229.0	4938.7	-17554.5
1993Q2	2	179879.6	-18168	198048	207980.6	2920.0	-9932.6
1993Q3	3	184157.9	-8232	192390	201753.8	2005.3	-9363.6
1993Q4	4	204782.7	-707	205490	202973.5	1926.8	2516.3
1994Q1	5	215145.3	10008	205137	216020.1	3038.7	-10882.6
1994Q2	6	220120.4	3958	216162	223456.5	3478.5	-7294.0
1994Q3	7	224857.6	2623	222235	229849.5	3770.0	-7614.9
1994Q4	8	244498.9	3011	241488	236964.7	4104.5	4523.4
1995Q1	9	257013.4	9658	247356	251799.9	5177.6	-4444.2
1995Q2	10	268251.6	6685	261567	264404.7	5920.3	-2837.7
1995Q3	11	280707.7	6479	274229	277524.1	6640.2	-3295.5
1995Q4	12	306236.9	6318	299919	291184.0	7342.2	8735.2
1996Q1	13	320848.6	9636	311213	309232.8	8412.8	1979.8
1996Q2	14	329595.1	5323	324272	323560.5	9004.3	711.3
1996Q3	15	336112.3	2463	333649	335302.0	9278.0	-1653.2
1996Q4	16	365625.2	4432	361194	349504.0	9770.4	11689.6
1997Q1	17	414840.1	19291	395549	380708.8	11913.9	14840.4
1997Q2	18	441183	17226	423957	411762.3	13827.8	12195.0
1997Q3	19	443649.1	7096	436553	433475.0	14616.3	3077.7
1997Q4	20	473921.5	5091	468831	453747.5	15181.9	15083.4
1998Q1	21	493387.1	3462	489925	472776.3	15566.6	17148.6
1998Q2	22	512073.8	4153	507921	492957.3	16028.1	14963.6
1998Q3	23	527451.8	5540	521912	515140.8	16643.6	6771.0
1998Q4	24	549745.5	1036	548710	532935.5	16758.7	15774.0
1999Q1	25	559644.4	-2591	562236	546814.9	16470.8	15420.9
1999Q2	26	554565.3	-8526	563092	553812.1	15523.4	9279.5
1999Q3	27	542409.4	-12131	554540	555856.6	14175.5	-1316.3
1999Q4	28	536933.7	-17594	554528	550483.2	12220.6	4044.6
2000Q1	29	548175	-10782	558957	550723.9	11022.6	8233.0
2000Q2	30	543395.4	-9947	553342	550694.3	9917.4	2648.1
2000Q3	31	547678.9	-4182	551861	555965.1	9452.8	-4104.3
2000Q4	32	549152.9	-7311	556464	557294.0	8640.4	-829.7
2001Q1	33	568758.9	-1947	570706	563771.0	8424.0	6935.0
2001Q2	34	583195.2	3007	580188	575535.9	8758.1	4652.6
2001Q3	35	589675.9	3415	586261	588088.4	9137.6	-1827.6
2001Q4	36	595970.9	-153	596124	597055.8	9120.5	-931.8
2002Q1	37	596536.5	-5967	602503	599546.4	8457.6	2957.0
2002Q2	38	594155.3	-6660	600816	600603.5	7717.5	212.3

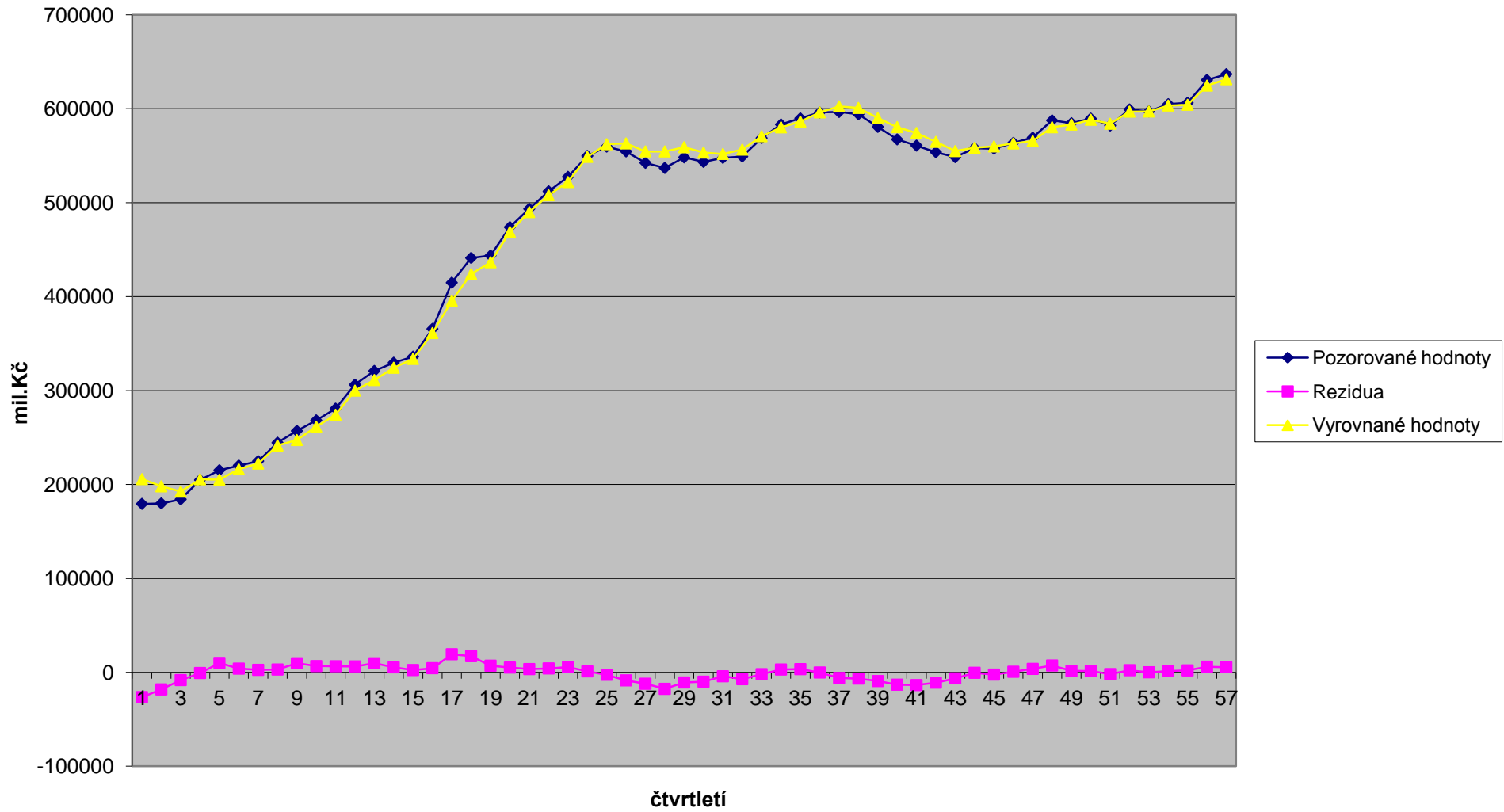
2002Q3	39	580665.6	-9298	589964	597989.9	6684.4	-8026.2
2002Q4	40	567335.8	-13106	580442	590111.6	5228.1	-9669.4
2003Q1	41	560701.5	-13534	574236	580301.6	3724.3	-6065.9
2003Q2	42	553728.3	-10984	564712	571822.0	2503.9	-7110.1
2003Q3	43	548450.7	-6426	554876	567186.3	1790.0	-12310.0
2003Q4	44	558026.2	-461	558487	568464.0	1738.7	-9976.7
2004Q1	45	557442.5	-2410	559852	567525.0	1471.0	-7672.5
2004Q2	46	563668.2	642	563027	569708.9	1542.3	-6682.3
2004Q3	47	569176.8	3685	565492	575345.4	1951.7	-9853.4
2004Q4	48	587564.8	7288	580277	585394.9	2761.5	-5118.1
2005Q1	49	584631.3	1493	583138	589815.3	2927.4	-6677.1
2005Q2	50	589489.7	1235	588255	594114.4	3064.5	-5859.3
2005Q3	51	582149.8	-1863	584013	595108.7	2857.5	-11095.6
2005Q4	52	599177.5	2279	596899	600497.9	3110.7	-3599.0
2006Q1	53	597108	64	597044	603679.2	3117.7	-6634.7
2006Q2	54	604796.4	1389	603407	608340.4	3272.1	-4933.2
2006Q3	55	606284.6	2076	604208	613919.6	3502.8	-9711.4
2006Q4	56	630641.9	6055	624587	624149.8	4175.5	437.4
2007Q1	57	636801.4	5440	631362	634369.7	4780.0	-3008.2
2007Q2	58						
2007Q3	59						
2007Q4	60						
		<b>473009</b>	<b>-487</b>				
		<b>yprum</b>	<b>ME</b>				

S01  
S02  
S03  
S04

abs.rezidua	rezidua <sup>2</sup>
26332	693357645
18168	330091039
8232	67769369
707	499907
10008	100156535
3958	15665199
2623	6880362
3011	9064571
9658	93269795
6685	44682925
6479	41979294
6318	39913541
9636	92852337
5323	28338410
2463	6068807
4432	19638888
19291	372138707
17226	296724132
7096	50358686
5091	25914321
3462	11986753
4153	17246432
5540	30690913
1036	1073237
2591	6715481
8526	72696681
12131	147160184
17594	309552115
10782	116249710
9947	98943347
4182	17488766
7311	53457271
1947	3791063
3007	9040448
3415	11662389
153	23455
5967	35604430
6660	44361889

9298	86453016	
13106	171777596	
13534	183176513	
10984	120638936	
6426	41288567	
461	212562	
2410	5807978	
642	411712	
3685	13578031	
7288	53115129	
1493	2229330	
1235	1524158	
1863	3471723	
2279	5191970	
64	4037	
1389	1929723	
2076	4311283	
6055	36659010	
5440	29592416	
0	0	
0	0	
0	0	
<b>6506</b>	<b>71657592</b>	<b>8465</b>
<b>MAE</b>	<b>MSE</b>	<b>RMSE</b>

### Wintersova metoda A - C913: Termínované vklady



poč.hodn.	alfa =	0.4	0.1	delta=	0.4
-----------	--------	-----	-----	--------	-----

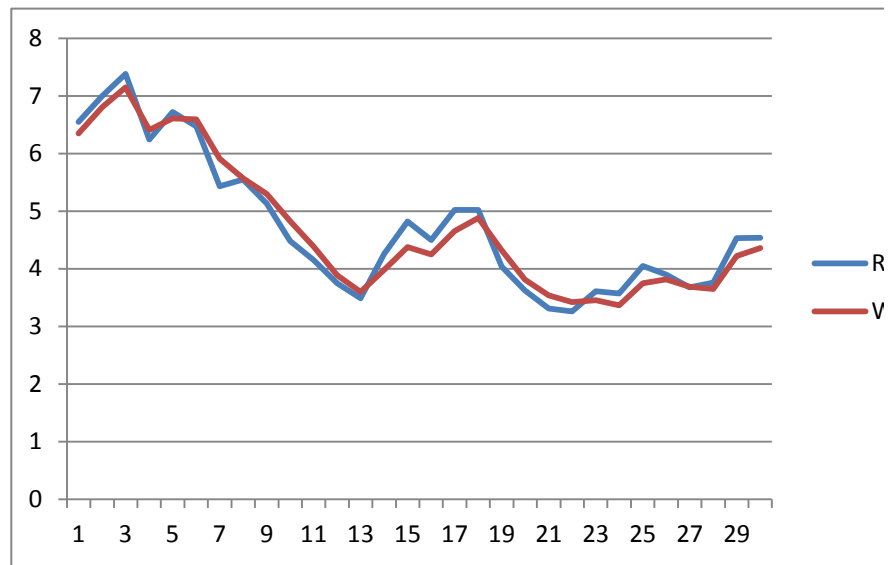
počáteční hodnoty parametrů jsou spočteny pomocí výpočetních postupů

nobs	52	L0	T0	0	S01
		6.10071	-0.1046	0.31826	S02
				0.43911	S03
				0.19826	S04

DATE	NOBS	REVENUE	WINTERS-A	Lt	Tt	St	rezidua
2000Q2	1	6.55	6.351	6.218	-0.082	0.133	0.199
2000Q3	2	7	6.803	6.354	-0.061	0.449	0.197
2000Q4	3	7.38	7.147	6.552	-0.035	0.595	0.233
2001Q1	4	6.24	6.411	6.327	-0.054	0.084	-0.171
2001Q2	5	6.72	6.607	6.399	-0.041	0.208	0.113
2001Q3	6	6.47	6.591	6.223	-0.055	0.368	-0.121
2001Q4	7	5.43	5.910	5.635	-0.108	0.275	-0.480
2002Q1	8	5.55	5.572	5.503	-0.110	0.069	-0.022
2002Q2	9	5.13	5.299	5.204	-0.129	0.095	-0.169
2002Q3	10	4.48	4.827	4.690	-0.168	0.137	-0.347
2002Q4	11	4.15	4.383	4.263	-0.194	0.120	-0.233
2003Q1	12	3.75	3.890	3.914	-0.209	-0.024	-0.140
2003Q2	13	3.49	3.602	3.581	-0.222	0.021	-0.112
2003Q3	14	4.26	3.985	3.665	-0.191	0.321	0.275
2003Q4	15	4.82	4.378	3.964	-0.142	0.414	0.442
2004Q1	16	4.5	4.247	4.103	-0.114	0.144	0.253
2004Q2	17	5.02	4.656	4.393	-0.074	0.263	0.364
2004Q3	18	5.02	4.883	4.472	-0.058	0.412	0.137
2004Q4	19	4.04	4.323	4.098	-0.090	0.225	-0.283
2005Q1	20	3.62	3.812	3.795	-0.111	0.017	-0.192
2005Q2	21	3.31	3.540	3.429	-0.137	0.110	-0.230
2005Q3	22	3.26	3.420	3.115	-0.154	0.305	-0.160
2005Q4	23	3.61	3.457	3.130	-0.137	0.327	0.153
2006Q1	24	3.57	3.368	3.217	-0.115	0.151	0.202
2006Q2	25	4.05	3.748	3.437	-0.081	0.311	0.302
2006Q3	26	3.9	3.814	3.451	-0.072	0.362	0.086
2006Q4	27	3.68	3.690	3.369	-0.073	0.321	-0.010
2007Q1	28	3.76	3.647	3.421	-0.060	0.226	0.113
2007Q2	29	4.53	4.221	3.704	-0.026	0.517	0.309
2007Q3	30	4.54	4.360	3.878	-0.006	0.482	0.180
2007Q4	31		1.509	2.195	-0.174	-0.686	-1.509
	32		0.809	1.122	-0.264	-0.313	-0.809
		4.728	4.698				0.030
		yprum	yvprum				ME



abs.rezidua	rezidua <sup>2</sup>
0.199	0.040
0.197	0.039
0.233	0.054
0.171	0.029
0.113	0.013
0.121	0.015
0.480	0.230
0.022	0.000
0.169	0.029
0.347	0.120
0.233	0.054
0.140	0.020
0.112	0.012
0.275	0.076
0.442	0.195
0.253	0.064
0.364	0.132
0.137	0.019
0.283	0.080
0.192	0.037
0.230	0.053
0.160	0.026
0.153	0.023
0.202	0.041
0.302	0.091
0.086	0.007
0.010	0.000
0.113	0.013
0.309	0.095
0.180	0.032
1.509	2.278
0.809	0.654
<b>0.207</b>	<b>0.055</b>
<b>MAE</b>	<b>MSE</b>
	<b>0.234</b>
	<b>RMSE</b>



REVENUE  
WINTERS-A

poč.hodn.	alfa =	0.4	gama =	0.1	delta=	0.4
-----------	--------	-----	--------	-----	--------	-----

počáteční hodnoty parametrů jsou spočteny pomocí výpočetních postupů

L0	T0	0
6.10071	-0.1046	0.31826
		0.43911
		0.19826

DATE	NOBS	REVENUE	rezidua	WINTERS-A	Lt	Tt	St
2000Q2	1	6.55	0.199	6.351	6.218	-0.082	0.133
2000Q3	2	7	0.197	6.803	6.354	-0.061	0.449
2000Q4	3	7.38	0.233	7.147	6.552	-0.035	0.595
2001Q1	4	6.24	-0.171	6.411	6.327	-0.054	0.084
2001Q2	5	6.72	0.113	6.607	6.399	-0.041	0.208
2001Q3	6	6.47	-0.121	6.591	6.223	-0.055	0.368
2001Q4	7	5.43	-0.480	5.910	5.635	-0.108	0.275
2002Q1	8	5.55	-0.022	5.572	5.503	-0.110	0.069
2002Q2	9	5.13	-0.169	5.299	5.204	-0.129	0.095
2002Q3	10	4.48	-0.347	4.827	4.690	-0.168	0.137
2002Q4	11	4.15	-0.233	4.383	4.263	-0.194	0.120
2003Q1	12	3.75	-0.140	3.890	3.914	-0.209	-0.024
2003Q2	13	3.49	-0.112	3.602	3.581	-0.222	0.021
2003Q3	14	4.26	0.275	3.985	3.665	-0.191	0.321
2003Q4	15	4.82	0.442	4.378	3.964	-0.142	0.414
2004Q1	16	4.5	0.253	4.247	4.103	-0.114	0.144
2004Q2	17	5.02	0.364	4.656	4.393	-0.074	0.263
2004Q3	18	5.02	0.137	4.883	4.472	-0.058	0.412
2004Q4	19	4.04	-0.283	4.323	4.098	-0.090	0.225
2005Q1	20	3.62	-0.192	3.812	3.795	-0.111	0.017
2005Q2	21	3.31	-0.230	3.540	3.429	-0.137	0.110
2005Q3	22	3.26	-0.160	3.420	3.115	-0.154	0.305
2005Q4	23	3.61	0.153	3.457	3.130	-0.137	0.327
2006Q1	24	3.57	0.202	3.368	3.217	-0.115	0.151
2006Q2	25	4.05	0.302	3.748	3.437	-0.081	0.311
2006Q3	26	3.9	0.086	3.814	3.451	-0.072	0.362
2006Q4	27	3.68	-0.010	3.690	3.369	-0.073	0.321
2007Q1	28	3.76	0.113	3.647	3.421	-0.060	0.226
2007Q2	29	4.53	0.309	4.221	3.704	-0.026	0.517
2007Q3	30	4.54	0.180	4.360	3.878	-0.006	0.482
2007Q4	31		-1.509	1.509	2.195	-0.174	-0.686
	32		-0.809	0.809	1.122	-0.264	-0.313
		2.837	-0.029	143.262			
		yprum	ME				

S01  
S02  
S03  
S04

abs.rezidua	rezidua <sup>2</sup>	
0.199	0.040	
0.197	0.039	
0.233	0.054	
0.171	0.029	
0.113	0.013	
0.121	0.015	
0.480	0.230	
0.022	0.000	
0.169	0.029	
0.347	0.120	
0.233	0.054	
0.140	0.020	
0.112	0.012	
0.275	0.076	
0.442	0.195	
0.253	0.064	
0.364	0.132	
0.137	0.019	
0.283	0.080	
0.192	0.037	
0.230	0.053	
0.160	0.026	
0.153	0.023	
0.202	0.041	
0.302	0.091	
0.086	0.007	
0.010	0.000	
0.113	0.013	
0.309	0.095	
0.180	0.032	
1.509	2.278	
0.809	0.654	
<b>0.285</b>	<b>0.152</b>	<b>0.390</b>
<b>MAE</b>	<b>MSE</b>	<b>RMSE</b>

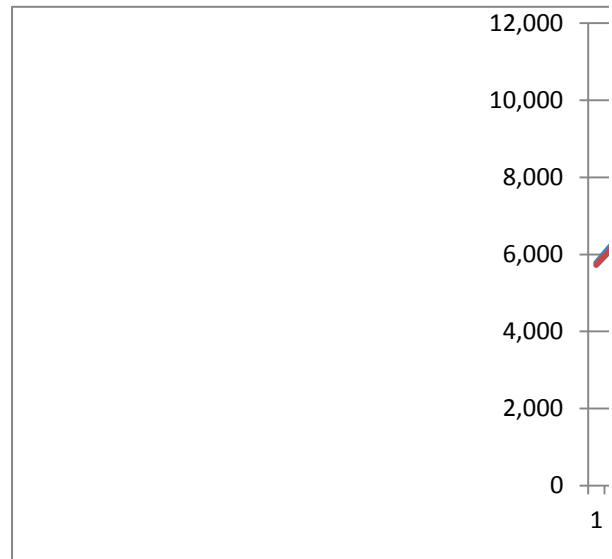
počát.hodn.	alfa =	<b>0.4</b>	gama =	<b>0.1</b>	delta=	<b>0.3</b>
Počáteční hodnoty $L_t$ a $T_t$ jsou spočteny podle doporučených vzorců, indexy S01, S02, S03, S04 odli						

<b>nobs</b>	<b>52</b>	$L_0$	$T_0$	<b>0.96</b>
		5791.15	74.69	<b>1</b>
			6314	<b>1.01</b>
			9899.25	<b>1.03</b>

quarter	NOBS	E0 - Kč/osoba	WINTERS-A	Lt	Tt	St
2000Q1	1	5,783	5719.248	5929.090	81.017	0.965
2000Q2	2	6,285	6169.545	6120.064	92.013	1.008
2000Q3	3	6,417	6357.023	6268.632	97.669	1.014
2000Q4	4	6,771	6681.242	6449.295	105.968	1.036
2001Q1	5	5,929	6094.589	6391.773	89.619	0.954
2001Q2	6	6,506	6517.673	6470.363	88.516	1.007
2001Q3	7	6,505	6566.472	6501.148	82.743	1.010
2001Q4	8	7,093	6978.625	6689.038	93.258	1.043
2002Q1	9	6,156	6286.601	6651.849	80.213	0.945
2002Q2	10	6,673	6718.480	6689.062	75.913	1.004
2002Q3	11	6,810	6819.639	6755.886	75.004	1.009
2002Q4	12	7,205	7172.080	6860.942	78.009	1.045
2003Q1	13	6,377	6452.994	6862.371	70.351	0.940
2003Q2	14	6,903	6928.289	6908.743	67.953	1.003
2003Q3	15	7,050	7046.864	6979.655	68.249	1.010
2003Q4	16	7,440	7409.559	7075.638	71.023	1.047
2004Q1	17	6,758	6742.177	7162.687	72.625	0.941
2004Q2	18	7,132	7183.988	7185.939	67.688	1.000
2004Q3	19	7,333	7328.999	7257.401	68.065	1.010
2004Q4	20	7,672	7671.654	7325.781	68.097	1.047
2005Q1	21	6,881	6914.094	7360.394	64.748	0.939
2005Q2	22	7,560	7502.513	7479.907	70.225	1.003
2005Q3	23	7,677	7654.999	7570.880	72.300	1.011
2005Q4	24	8,041	8025.476	7657.298	73.711	1.048
2006Q1	25	7,384	7332.859	7782.858	78.896	0.942
2006Q2	26	8,123	8023.257	7956.462	88.367	1.008
2006Q3	27	8,285	8221.670	8104.481	94.332	1.014
2006Q4	28	8,794	8709.592	8275.514	102.002	1.052
2007Q1	29	8,029	7971.936	8435.197	107.770	0.945
2007Q2	30	8,685	8655.468	8570.859	110.560	1.010
2007Q3	31	8,783	8793.059	8671.975	109.615	1.014
2007Q4	32	9,204	9220.050	8767.067	108.163	1.052
2008Q1	33	8,647	8538.137	8984.934	119.133	0.950
2008Q2	34	9,417	9323.314	9192.419	127.968	1.014
2008Q3	35	9,521	9491.401	9348.189	130.749	1.015
2008Q4	36	9,830	9888.255	9426.183	125.473	1.049
2009Q1	37	9,057	9065.264	9543.373	124.645	0.950

2009Q2	38	9,709	9749.608	9629.887	120.832	1.012
2009Q3	39	9,641	9749.820	9648.644	110.624	1.010
2009Q4	40	10,013	10107.361	9673.600	102.057	1.045
2010Q1	41	9,123	9191.423	9707.056	95.197	0.947
2010Q2	42	9,680	9782.529	9705.805	85.553	1.008
2010Q3	43	9,743	9806.433	9731.572	79.574	1.008
2010Q4	44	10,236	10242.331	9805.375	78.997	1.045
2011Q1	45	9,223	9280.254	9826.785	73.238	0.944
2011Q2	46	9,822	9887.639	9838.001	67.036	1.005
2011Q3	47	9,902	9935.277	9873.586	63.891	1.006
2011Q4	48	10,371	10374.914	9933.908	63.534	1.044
2012Q1	49	9,388	9410.436	9974.815	61.271	0.943
2012Q2	50	9,815	9929.124	9927.943	50.457	1.000
2012Q3	51	9,999	10016.533	9961.805	48.797	1.005
2012Q4	52	10,395	10420.206	9987.617	46.499	1.043
		8188	8193			
		<i>yprum</i>	<i>yvprum</i>			

hadem		
S01		
S02		
S03		
S04		
rezidua	abs.rezidua	rezidua <sup>2</sup>
63.752	63.752	4064.29
115.455	115.455	13329.88
59.977	59.977	3597.23
89.758	89.758	8056.53
-165.589	165.589	27419.82
-11.673	11.673	136.27
-61.472	61.472	3778.85
114.375	114.375	13081.63
-130.601	130.601	17056.68
-45.480	45.480	2068.41
-9.639	9.639	92.91
32.920	32.920	1083.74
-75.994	75.994	5775.16
-25.289	25.289	639.52
3.136	3.136	9.84
30.441	30.441	926.67
15.823	15.823	250.38
-51.988	51.988	2702.79
4.001	4.001	16.01
0.346	0.346	0.12
-33.094	33.094	1095.20
57.487	57.487	3304.72
22.001	22.001	484.04
15.524	15.524	240.99
51.141	51.141	2615.37
99.743	99.743	9948.75
63.330	63.330	4010.66
84.408	84.408	7124.70
57.064	57.064	3256.26
29.532	29.532	872.13
-10.059	10.059	101.19
-16.050	16.050	257.60
108.863	108.863	11851.20
93.686	93.686	8776.97
29.599	29.599	876.12
-58.255	58.255	3393.67
-8.264	8.264	68.30



-40.608	40.608	1649.00
-108.820	108.820	11841.89
-94.361	94.361	8903.94
-68.423	68.423	4681.70
-102.529	102.529	10512.26
-63.433	63.433	4023.76
-6.331	6.331	40.08
-57.254	57.254	3278.08
-65.639	65.639	4308.43
-33.277	33.277	1107.38
-3.914	3.914	15.32
-22.436	22.436	503.39
-114.124	114.124	13024.34
-17.533	17.533	307.42
-25.206	25.206	635.32
<b>-5.48</b>	<b>53.26</b>	<b>4369.17</b>
<b>ME</b>	<b>MAE</b>	<b>MSE</b>
		<b>66.100</b>
		<b>RMSE</b>



