

QUART	P0	P1	P2	P3	P4	P5	P6	P7	P8	P8	P10	P11	P12
199901	0	0	0	0	0	0	0	0	0	0	0	0	0
199902	0	0	0	0	0	0	0	0	0	0	0	0	0
199903	0	0	0	0	0	0	0	0	0	0	0	0	0
199904	0	0	0	0	0	0	0	0	0	0	0	0	0
200001	88.6	95.8	89.5	121.7	77.0	105.9	79.4	94.2	77.6	90.4	86.0	82.8	84.7
200002	88.9	95.1	89.9	121.1	77.4	105.8	80.1	97.5	77.6	89.8	86.3	83.1	84.9
200003	89.9	95.8	90.7	120.2	78.7	105.6	80.7	100.2	77.6	92.9	87.1	83.5	85.0
200004	90.3	98.1	91.1	120.3	79.2	105.5	80.8	99.6	77.6	91.1	88.2	84.2	85.3
200101	92.2	99.7	92.3	119.0	84.1	105.6	81.5	96.8	81.8	92.6	88.3	84.9	87.4
200102	93.3	102.0	93.2	119.1	84.6	105.7	81.9	99.1	81.6	93.7	88.4	85.3	88.9
200103	94.8	101.7	93.3	118.4	87.2	105.8	83.5	99.6	81.2	100.7	89.4	85.9	89.2
200104	94.2	100.9	93.8	118.8	87.5	105.9	84.3	97.1	80.8	96.0	91.3	86.8	89.9
200201	95.8	103.2	94.0	117.1	90.8	105.8	85.2	95.3	83.7	97.0	91.4	87.8	92.1
200202	95.5	101.3	95.0	116.5	90.1	105.9	86.1	97.1	84.3	96.6	91.4	88.7	92.4
200203	95.5	96.3	95.4	114.9	91.8	105.6	87.9	96.4	85.0	100.8	92.4	89.0	92.3
200204	94.7	95.7	95.4	114.4	91.3	105.4	87.8	96.6	83.2	96.2	95.1	89.1	92.7
200301	95.4	96.9	95.7	111.5	92.0	105.1	88.8	97.2	82.9	97.8	95.2	89.7	94.8
200301	95.6	97.5	95.7	111.1	93.0	104.4	90.2	96.6	82.5	96.4	95.3	90.0	94.9
200303	95.4	95.3	95.8	108.6	93.3	103.7	91.3	96.0	82.0	99.7	95.1	90.5	95.0
200304	95.5	98.2	95.8	108.8	93.0	103.3	90.6	95.9	81.9	95.4	95.7	91.0	95.5
200401	97.6	101.1	96.5	106.3	95.8	102.8	90.9	98.0	94.3	97.0	96.0	92.1	97.8
200401	98.1	101.1	98.5	106.2	95.4	102.4	93.0	99.3	93.1	96.9	96.3	95.2	99.1
200403	98.4	99.5	99.8	104.2	95.7	101.7	94.3	98.8	91.8	102.1	97.8	97.0	99.6
200404	98.4	99.3	99.5	105.5	97.1	101.2	93.8	98.1	92.5	97.1	100.9	98.2	99.5
200501	99.2	100.8	100.2	101.5	99.1	100.6	98.0	96.0	92.0	99.2	98.6	99.3	99.9
200501	99.6	101.0	99.9	101.2	99.1	100.2	100.1	99.0	96.4	98.4	98.9	99.8	100.0
200503	100.2	98.9	99.9	98.5	99.7	99.7	101.4	102.4	106.0	103.0	99.9	99.9	99.9
200504	100.7	99.3	99.9	98.7	102.0	99.4	100.7	102.5	105.5	99.5	102.7	100.9	100.1

200601	102.0	100.2	101.0	95.5	106.0	99.0	102.2	100.3	104.7	101.1	102.6	101.8	101.3
200601	102.5	101.1	101.1	94.8	106.4	98.8	104.1	102.5	105.4	100.3	102.6	102.4	101.8
200603	103.2	101.4	101.2	92.3	106.6	98.4	106.5	103.4	108.4	104.9	103.5	102.9	102.1
200604	102.2	100.7	101.2	93.6	106.0	98.5	106.5	100.3	108.6	99.8	105.2	103.3	102.2
200701	103.6	103.2	104.6	92.9	108.4	98.4	106.7	99.1	108	101.7	105.3	104.2	103.5
200701	105	104.9	109.4	94.4	109.3	98.6	109.9	102	107.6	100.9	105.3	105	104.1
200703	105.9	104.3	114.7	92.2	110.2	98.5	109.2	103	106.4	103.4	105.9	105.8	104
200704	107.2	110.1	117.1	93.8	111.5	98.6	108.8	103.7	105.1	99.9	107.3	107	104.2
200801	111.3	115	118.7	91.3	118.4	98.8	142	105.7	105.1	102.6	107.6	111.3	108.5
200802	112.1	115.6	119.4	93.1	120.1	99.3	141.8	106.9	104.8	101.8	107.7	112.7	108.8
200803	112.9	114	123.7	91.3	122.1	99.2	143.7	106.4	103.8	104.1	108.9	113.7	109.2
200804	112.2	112.3	128.1	93.4	124	98.8	143.6	98.3	101.7	100.9	111.1	114.3	109.2
200901	113.6	113.5	129.5	90.2	130.1	98.8	141.4	95.4	100.6	101.7	111.3	114.9	110.5
200902	113.7	111.5	130.5	90.8	130.2	98.8	136.4	98.6	100.2	101.2	111.3	115.5	110.8
200903	113	107	130.5	87.9	129.9	98.2	137	100	98.1	103.1	111.7	115.8	114.4
200904	112.7	106.8	131.2	90.7	129.6	98	137.6	99.2	97.4	99.7	112.8	116	111.3
201001	114.4	110.8	134.5	87.6	131.5	98.2	141.7	100.2	97.7	100.5	112.9	117.6	111.9
201002	115.1	111.5	136.1	88.9	132	98.2	145.4	101.8	97.3	100.1	112.9	118.4	111.8
201003	115.2	110.9	137.8	85.7	132.6	97.9	147.3	101	96.6	102.5	113.6	118.7	112.3
201004	115	112	137.6	88	132.6	97.4	146.7	100.6	96.5	98.5	115.1	118.8	112.6
201101	116.4	115.3	139.6	84.7	134.8	97	147.1	102.8	96.5	98.6	115.3	119.3	113.3
201102	117.1	117.1	140.2	87	135.2	96.7	148.7	103.9	96.4	98.1	115.4	119.8	113
201103	117.2	115.4	141.7	84.2	136.3	96.2	150.1	103.9	96.1	100.1	116.1	120.5	113.1
201104	117.8	118	141.4	86.7	137.1	95.9	152.2	104.4	95.7	97.1	117.5	121.1	113.3
201201	120.7	124	142.6	81.9	142.3	95.9	161.6	106.8	95.3	98.4	117.8	123.5	115
201202	121.1	125	143	84.8	142.5	95.6	162.1	107.2	95	98.1	117.9	124.8	115.2
201203	121.1	123.7	144.9	81.1	142.8	94.9	165.1	106.8	94.1	99.7	118.4	125.3	115.2
201204	121.1	125.2	146.8	84	142.7	95.1	165.3	105.8	91.2	97	119.4	125.6	115.9



M1	M2	Q0	Q1	Q2	Q3	Q4	Q5	Q6	Q7	Q8	Q9	Q10	Q11
		0	0	0	0	0	0	0	0	0	0	0	0
		0	0	0	0	0	0	0	0	0	0	0	0
		0	0	0	0	0	0	0	0	0	0	0	0
		0	0	0	0	0	0	0	0	0	0	0	0
5,783	0	6527.1	1377.9	202.2	268.7	1514.3	367.3	128.5	575.4	305.4	652.7	53.5	385.3
6,285	0	7069.7	1491.1	219.1	336.1	1568.5	405.5	128.6	708.7	318.3	720.5	32.4	409.1
6,417	0	7137.9	1489.6	228.2	299.5	1587.0	429.0	109.0	709.6	328.6	751.3	47.1	453.9
6,771	0	7498.3	1536.2	248.1	450.5	1539.1	502.4	132.4	649.6	351.8	787.0	34.0	375.3
5,929	0	6430.6	1372.1	192.8	273.1	1376.9	362.7	146.0	691.1	278.7	630.7	48.7	376.9
6,506	0	6973.2	1461.8	213.5	367.8	1385.3	411.5	141.6	797.2	307.6	738.5	32.8	400.9
6,505	0	6861.8	1459.2	221.9	319.3	1471.3	407.4	109.0	705.8	296.8	734.9	45.9	438.9
7,093	0	7529.7	1590.7	242.0	500.0	1410.3	521.2	138.8	711.6	361.4	764.6	35.0	362.9
6,156	0	6425.9	1316.9	197.9	299.7	1393.2	391.3	140.8	554.0	315.4	657.7	55.8	374.7
6,673	0	6987.4	1441.3	212.6	376.0	1461.7	431.5	141.7	693.1	327.4	724.6	33.9	394.6
6,810	0	7130.9	1525.4	223.3	336.8	1476.0	456.4	118.3	717.8	334.1	748.0	49.8	438.2
7,205	0	7608.2	1620.7	243.2	508.7	1448.0	535.1	143.5	652.2	365.4	805.6	35.8	364.8
6,377	0	6684.5	1438.6	197.5	298.7	1431.5	396.8	150.9	576.1	357.1	674.8	68.3	373.5
6,903	0	7220.7	1535.4	215.3	372.6	1473.1	440.6	151.9	738.1	373.3	750.0	42.0	395.6
7,050	0	7389.9	1581.3	226.5	337.0	1511.3	467.7	128.1	763.5	387.8	782.3	61.0	439.8
7,440	0	7790.6	1620.2	246.3	506.4	1479.6	549.9	155.6	696.6	415.1	839.6	44.9	363.7
6,758	0	6924.2	1436.2	191.7	330.2	1447.8	401.8	155.1	727.6	323.4	721.6	56.3	390.9
7,132	0	7270.1	1525.2	207.1	387.0	1452.8	435.5	157.0	831.8	356.6	773.0	34.3	400.2
7,333	0	7452.2	1548.7	217.4	361.8	1498.4	468.0	129.4	859.3	361.7	824.7	50.1	439.2
7,672	0	7796.7	1629.4	234.2	532.7	1417.1	553.4	153.5	805.3	387.0	865.1	31.7	354.4
6,881	0	6936.5	1472.2	197.6	323.2	1467.2	431.4	151.0	695.8	355.4	705.6	51.7	357.5
7,560	0	7590.4	1540.6	209.2	428.9	1531.8	502.0	155.8	913.1	344.4	791.7	30.3	386.8
7,677	0	7661.7	1576.3	221.2	363.5	1571.7	520.6	124.3	943.4	324.5	801.9	41.0	425.4
8,041	0	7985.1	1664.7	242.2	555.2	1518.6	591.5	164.8	792.2	348.8	864.3	34.1	353.8

7,384	0	7239.2	1489.0	201.0	363.4	1495.3	496.0	168.3	724.8	346.7	732.9	51.7	380.2
8,123	0	7924.9	1638.0	221.6	456.8	1600.6	533.4	160.4	933.7	353.9	816.6	33.1	395.5
8,285	0	8028.1	1662.7	230.2	426.9	1632.3	571.1	143.7	915.9	362.5	821.7	49.3	444.1
8,794	0	8604.7	1768.6	253.0	630.3	1604.7	684.3	163.4	911.3	384.9	900.8	36.1	371.7
8,029		7750.0	1554.3	204.6	405.8	1574.7	535.6	188.4	887.0	361.1	764.0	58.9	390.6
8,685		8271.4	1651.1	222.1	491.5	1582.8	628.8	170.2	1031.4	368.0	880.1	33.2	425.7
8,783		8293.7	1663.5	222.3	459.9	1575.3	606.1	157.5	951.5	379.7	967.1	61.4	488.7
9,204		8585.8	1712.1	237.4	639.7	1573.1	719.1	212.3	788.8	409.1	973.0	38.2	390.7
8,647		7769.1	1542.6	192.1	433.7	1489.0	593.1	185.9	854.3	401.5	822.6	67.8	402.5
9,417		8400.5	1627.2	208.5	511.3	1556.2	612.3	184.1	1110.4	407.4	950.9	38.1	433.9
9,521		8433.1	1657.0	215.0	491.8	1570.8	604.8	161.4	1027.3	420.0	1027.9	62.4	483.7
9,830		8761.1	1769.4	223.3	660.6	1535.5	724.7	185.9	967.4	449.4	1044.6	41.4	396.3
9,057		7972.7	1548.9	184.6	443.5	1557.3	585.0	190.9	941.3	428.4	889.9	69.2	403.0
9,709		8539.1	1665.5	206.1	525.3	1586.8	625.5	198.7	1186.6	433.1	968.4	35.9	438.1
9,641		8531.9	1720.6	213.0	498.3	1618.9	656.8	166.4	969.0	449.5	1029.1	56.4	490.5
10,013		8884.6	1823.0	225.6	681.4	1557.1	758.2	198.4	999.0	475.4	1005.0	44.3	388.8
9,123		7974.7	1614.6	178.4	452.1	1562.7	535.6	178.5	940.1	447.3	882.6	67.3	394.6
9,680		8410.1	1660.1	194.0	508.4	1590.9	597.8	183.6	1148.3	449.1	957.0	56.7	405.4
9,743		8457.5	1692.5	200.3	521.6	1620.7	593.5	169.7	1000.0	453.4	1046.8	65.1	460.0
10,236		8900.9	1771.4	216.6	725.0	1600.3	754.6	193.6	1005.0	477.7	1036.5	43.4	378.8
9,223		7923.5	1516.0	179.1	464.0	1571.2	534.0	184.9	1001.9	448.7	858.0	72.9	388.9
9,822		8387.7	1625.1	198.3	528.7	1631.7	585.3	184.9	1115.5	444.0	971.5	35.5	419.9
9,902		8448.8	1618.7	204.7	510.7	1655.2	636.2	157.2	995.2	454.7	1077.9	52.5	467.2
10,371		8803.9	1690.7	219.2	695.5	1622.2	763.3	193.2	1026.8	474.4	1010.3	48.5	384.0
9,388		9388.0	1514.5	176.7	490.8	1512.3	498.4	181.9	971.9	456.5	823.2	74.7	400.8
9,815		8104.9	1589.6	196.5	530.7	1544.6	559.6	176.4	977.6	457.9	980.6	35.6	420.7
9,999		8256.8	1589.3	198.1	511.7	1549.7	619.6	145.4	1027.2	462.3	1035.1	66.7	470.1
10,395		8583.8	1674.9	209.1	710.7	1524.2	718.2	175.44	1004.7	498.9	981.4	42.7	379.0



Q12	E0	E1	E2	E3	E4	E5	E6	E7	E8	E9	E10	E11	E12
0	0	0	0	0	0	0	0	0	0	0	0	0	0
0	0	0	0	0	0	0	0	0	0	0	0	0	0
0	0	0	0	0	0	0	0	0	0	0	0	0	0
0	0	0	0	0	0	0	0	0	0	0	0	0	0
664.7	5,783	1,320	181	327	1,166	389	102	542	237	590	46	319	563
663.1	6,285	1,418	197	407	1,214	429	103	691	247	647	28	340	563
645.9	6,417	1,427	207	360	1,249	453	88	711	255	698	41	379	549
772.6	6,771	1,507	226	542	1,219	530	107	647	273	717	30	316	659
633.9	5,929	1,368	178	325	1,158	383	119	669	228	584	43	320	554
619.8	6,506	1,491	199	438	1,172	435	116	790	251	692	29	342	551
593.0	6,505	1,484	207	378	1,283	431	91	703	241	740	41	377	529
778.6	7,093	1,605	227	594	1,234	552	117	691	292	734	32	315	700
704.7	6,156	1,359	186	351	1,265	414	120	528	264	638	51	329	649
702.4	6,673	1,460	202	438	1,317	457	122	673	276	700	31	350	649
686.9	6,810	1,469	213	387	1,355	482	104	692	284	754	46	390	634
819.8	7,205	1,551	232	582	1,322	564	126	630	304	775	34	325	760
715.2	6,377	1,394	189	333	1,317	417	134	560	296	660	65	335	678
714.4	6,903	1,497	206	414	1,370	460	137	713	308	723	40	356	678
696.8	7,050	1,507	217	366	1,410	485	117	733	318	780	58	398	662
831.4	7,440	1,591	236	551	1,376	568	141	668	340	801	43	331	794
712.7	6,758	1,452	185	351	1,387	413	141	713	305	700	54	360	697
682.1	7,132	1,542	204	411	1,386	446	146	826	332	749	33	381	676
670.7	7,333	1,541	217	377	1,434	476	122	849	332	842	49	426	668
815.1	7,672	1,618	233	562	1,376	560	144	790	358	840	32	348	811
734.7	6,881	1,484	198	328	1,454	434	148	668	327	700	51	355	734
753.0	7,560	1,556	209	434	1,518	503	156	904	332	779	30	386	753
725.7	7,677	1,559	221	358	1,567	519	126	966	344	826	41	425	725
862.1	8,041	1,653	242	548	1,549	588	166	812	368	860	35	357	863

812.4	7,384	1,492	203	347	1,585	491	172	727	363	741	53	387	823
810.4	8,123	1,656	224	433	1,703	527	167	957	373	819	34	405	825
790.4	8,285	1,686	233	394	1,740	562	153	947	393	862	51	457	807
944.2	8,794	1,781	256	590	1,701	674	174	914	418	899	38	384	965
855.1	8,029	1,604	214	377	1,707	527	201	879	390	777	62	407	885
857.8	8,685	1,732	243	464	1,730	620	187	1,052	396	888	35	447	893
862.5	8,783	1,735	255	424	1,736	597	172	980	404	1000	65	517	897
1025.0	9,204	1,885	278	600	1,754	709	231	818	430	972	41	418	1068
872.8	8,647	1,774	228	396	1,763	586	264	903	422	844	73	448	947
882.4	9,417	1,881	249	476	1,869	608	261	1,187	427	968	41	489	960
870.8791	9,521	1,889	266	449	1,918	600	232	1093	436	1070	68	550	951
999.1	9,830	1,987	286	617	1,904	716	267	951	457	1054	46	453	1091
915.8	9,057	1,758	239	400	2,026	578	270	898	431	905	77	463	1012
920.6	9,709	1,857	269	477	2,066	618	271	1,170	434	980	40	506	1020
879.3706	9,641	1,841	278	438	2,103	645	228	969	441	1061	63	568	1006
1043.1	10,013	1,947	296	618	2,018	743	273	991	463	1002	50	451	1161
945.5	9,123	1789	240	396	2055	526	253	942	437	887	76	464	1058
940.1	9,680	1851	264	452	2100	587	267	1169	437	958	64	480	1051
908.3	9,743	1877	276	447	2149	581	250	1010	438	1073	74	546	1020
1048.0	10,236	1984	298	638	2122	735	284	1011	461	1021	50	450	1180
941.7	9,223	1748	250	393	2118	518	272	1030	433	846	84	464	1067
930.1	9,822	1903	278	460	2206	566	275	1159	428	953	41	503	1051
916.9	9,902	1868	290	430	2256	612	236	1034	437	1079	61	563	1037
1045.0	10,371	1995	310	603	2224	732	294	1072	454	981	57	465	1184
927.8	9,388	1878	252	402	2152	478	294	1038	435	810	88	495	1067
921.0	9,815	1987	281	450	2201	535	286	1048	435	962	42	525	1061
919.3	9,999	1966	287	415	2213	588	240	1097	435	1032	79	589	1059
1076.8	10,395	2097	307	597	2175	683	290	1063	455	952	51	476	1248





QUARTD

199901  
199902  
199903  
199904

200001  
200002  
200003  
200004

200101  
200102  
200103  
200104

200201  
200202  
200203  
200204

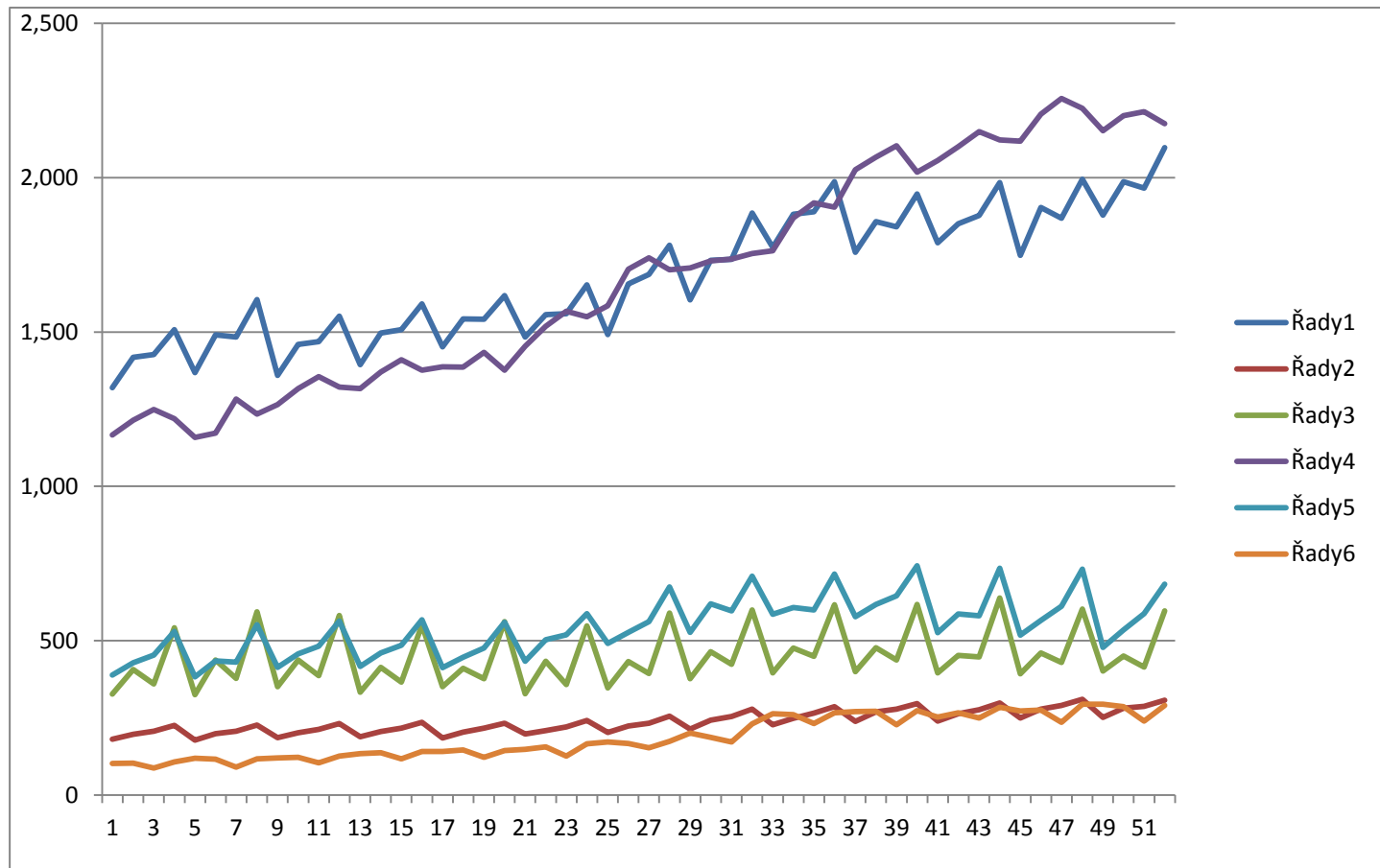
200301  
200301  
200303  
200304

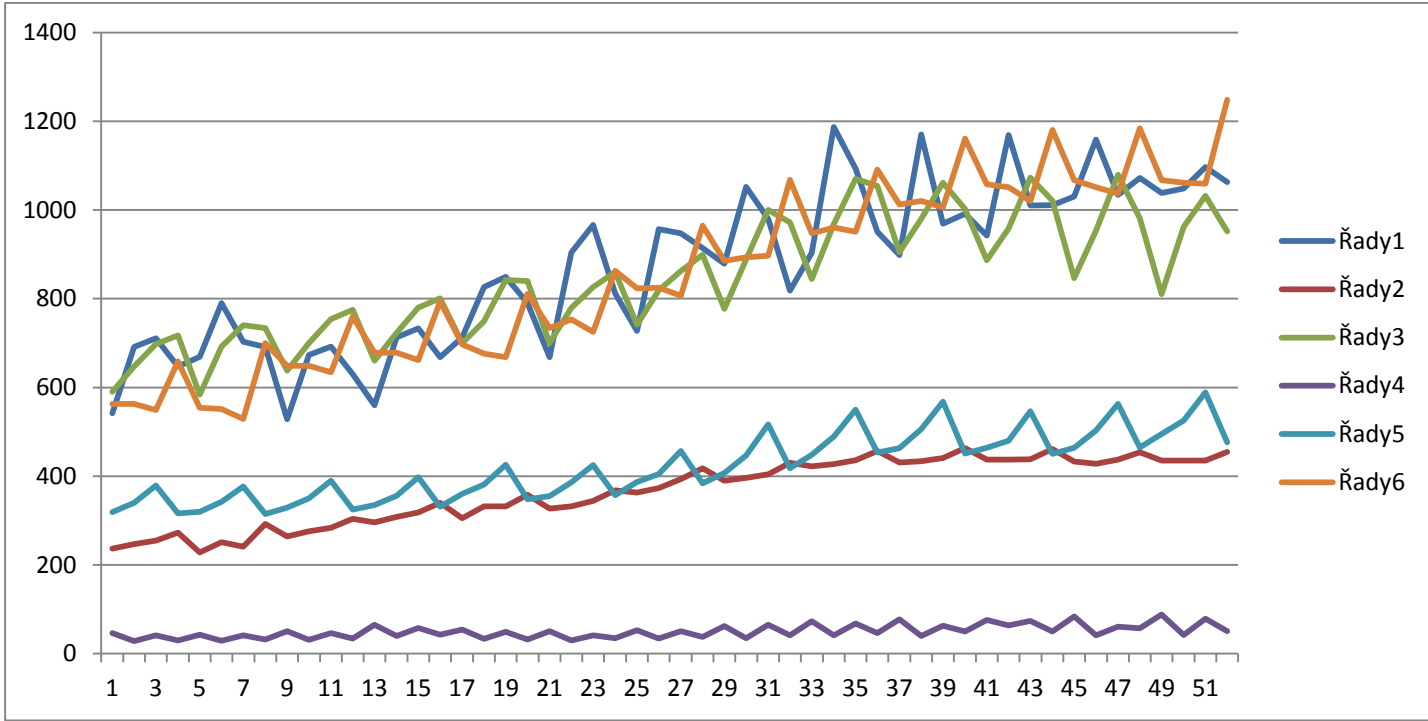
200401  
200401  
200403  
200404

200501  
200501  
200503  
200504

podily

200601  
 200601  
 200603  
 200604  
 200701  
 200701  
 200703  
 200704  
 200801  
 200802  
 200803  
 200804  
 200901  
 200902  
 200903  
 200904  
 201001  
 201002  
 201003  
 201004  
 201101  
 201102  
 201103  
 201104  
 201201  
 201202  
 201203  
 201204





čtvrtletí	P0	P1	P2	P3	P4	P5	P6	P7	P8	P8	P10	P11	P12
199901	0	0	0	0	0	0	0	0	0	0	0	0	0
199902	0	0	0	0	0	0	0	0	0	0	0	0	0
199903	0	0	0	0	0	0	0	0	0	0	0	0	0
199904	0	0	0	0	0	0	0	0	0	0	0	0	0
200001	88.6	95.8	89.5	121.7	77.0	105.9	79.4	94.2	77.6	90.4	86.0	82.8	84.7
200002	88.9	95.1	89.9	121.1	77.4	105.8	80.1	97.5	77.6	89.8	86.3	83.1	84.9
200003	89.9	95.8	90.7	120.2	78.7	105.6	80.7	100.2	77.6	92.9	87.1	83.5	85.0
200004	90.3	98.1	91.1	120.3	79.2	105.5	80.8	99.6	77.6	91.1	88.2	84.2	85.3
200101	92.2	99.7	92.3	119.0	84.1	105.6	81.5	96.8	81.8	92.6	88.3	84.9	87.4
200102	93.3	102.0	93.2	119.1	84.6	105.7	81.9	99.1	81.6	93.7	88.4	85.3	88.9
200103	94.8	101.7	93.3	118.4	87.2	105.8	83.5	99.6	81.2	100.7	89.4	85.9	89.2
200104	94.2	100.9	93.8	118.8	87.5	105.9	84.3	97.1	80.8	96.0	91.3	86.8	89.9
200201	95.8	103.2	94.0	117.1	90.8	105.8	85.2	95.3	83.7	97.0	91.4	87.8	92.1
200202	95.5	101.3	95.0	116.5	90.1	105.9	86.1	97.1	84.3	96.6	91.4	88.7	92.4
200203	95.5	96.3	95.4	114.9	91.8	105.6	87.9	96.4	85.0	100.8	92.4	89.0	92.3
200204	94.7	95.7	95.4	114.4	91.3	105.4	87.8	96.6	83.2	96.2	95.1	89.1	92.7
200301	95.4	96.9	95.7	111.5	92.0	105.1	88.8	97.2	82.9	97.8	95.2	89.7	94.8
200301	95.6	97.5	95.7	111.1	93.0	104.4	90.2	96.6	82.5	96.4	95.3	90.0	94.9
200303	95.4	95.3	95.8	108.6	93.3	103.7	91.3	96.0	82.0	99.7	95.1	90.5	95.0
200304	95.5	98.2	95.8	108.8	93.0	103.3	90.6	95.9	81.9	95.4	95.7	91.0	95.5
200401	97.6	101.1	96.5	106.3	95.8	102.8	90.9	98.0	94.3	97.0	96.0	92.1	97.8
200401	98.1	101.1	98.5	106.2	95.4	102.4	93.0	99.3	93.1	96.9	96.3	95.2	99.1
200403	98.4	99.5	99.8	104.2	95.7	101.7	94.3	98.8	91.8	102.1	97.8	97.0	99.6
200404	98.4	99.3	99.5	105.5	97.1	101.2	93.8	98.1	92.5	97.1	100.9	98.2	99.5
200501	99.2	100.8	100.2	101.5	99.1	100.6	98.0	96.0	92.0	99.2	98.6	99.3	99.9
200501	99.6	101.0	99.9	101.2	99.1	100.2	100.1	99.0	96.4	98.4	98.9	99.8	100.0
200503	100.2	98.9	99.9	98.5	99.7	99.7	101.4	102.4	106.0	103.0	99.9	99.9	99.9

200504	100.7	99.3	99.9	98.7	102.0	99.4	100.7	102.5	105.5	99.5	102.7	100.9	100.1
200601	102.0	100.2	101.0	95.5	106.0	99.0	102.2	100.3	104.7	101.1	102.6	101.8	101.3
200601	102.5	101.1	101.1	94.8	106.4	98.8	104.1	102.5	105.4	100.3	102.6	102.4	101.8
200603	103.2	101.4	101.2	92.3	106.6	98.4	106.5	103.4	108.4	104.9	103.5	102.9	102.1
200604	102.2	100.7	101.2	93.6	106.0	98.5	106.5	100.3	108.6	99.8	105.2	103.3	102.2
200701	103.6	103.2	104.6	92.9	108.4	98.4	106.7	99.1	108	101.7	105.3	104.2	103.5
200701	105	104.9	109.4	94.4	109.3	98.6	109.9	102	107.6	100.9	105.3	105	104.1
200703	105.9	104.3	114.7	92.2	110.2	98.5	109.2	103	106.4	103.4	105.9	105.8	104
200704	107.2	110.1	117.1	93.8	111.5	98.6	108.8	103.7	105.1	99.9	107.3	107	104.2
200801	111.3	115	118.7	91.3	118.4	98.8	142	105.7	105.1	102.6	107.6	111.3	108.5
200802	112.1	115.6	119.4	93.1	120.1	99.3	141.8	106.9	104.8	101.8	107.7	112.7	108.8
200803	112.9	114	123.7	91.3	122.1	99.2	143.7	106.4	103.8	104.1	108.9	113.7	109.2
200804	112.2	112.3	128.1	93.4	124	98.8	143.6	98.3	101.7	100.9	111.1	114.3	109.2
200901	113.6	113.5	129.5	90.2	130.1	98.8	141.4	95.4	100.6	101.7	111.3	114.9	110.5
200902	113.7	111.5	130.5	90.8	130.2	98.8	136.4	98.6	100.2	101.2	111.3	115.5	110.8
200903	113	107	130.5	87.9	129.9	98.2	137	100	98.1	103.1	111.7	115.8	114.4
200904	112.7	106.8	131.2	90.7	129.6	98	137.6	99.2	97.4	99.7	112.8	116	111.3
201001	114.4	110.8	134.5	87.6	131.5	98.2	141.7	100.2	97.7	100.5	112.9	117.6	111.9
201002	115.1	111.5	136.1	88.9	132	98.2	145.4	101.8	97.3	100.1	112.9	118.4	111.8
201003	115.2	110.9	137.8	85.7	132.6	97.9	147.3	101	96.6	102.5	113.6	118.7	112.3
201004	115	112	137.6	88	132.6	97.4	146.7	100.6	96.5	98.5	115.1	118.8	112.6
201101	116.4	115.3	139.6	84.7	134.8	97	147.1	102.8	96.5	98.6	115.3	119.3	113.3
201102	117.1	117.1	140.2	87	135.2	96.7	148.7	103.9	96.4	98.1	115.4	119.8	113
201103	117.2	115.4	141.7	84.2	136.3	96.2	150.1	103.9	96.1	100.1	116.1	120.5	113.1
201104	117.8	118	141.4	86.7	137.1	95.9	152.2	104.4	95.7	97.1	117.5	121.1	113.3
201201	120.7	124	142.6	81.9	142.3	95.9	161.6	106.8	95.3	98.4	117.8	123.5	115
201202	121.1	125	143	84.8	142.5	95.6	162.1	107.2	95	98.1	117.9	124.8	115.2
201203	121.1	123.7	144.9	81.1	142.8	94.9	165.1	106.8	94.1	99.7	118.4	125.3	115.2

201204	121.1	125.2	146.8	84	142.7	95.1	165.3	105.8	91.2	97	119.4	125.6	115.9
	potraviny,neal.	alko,tabák	oděvy,obuv	bydlení,energie vybavení dom.	zdraví	doprava	spoje,telekom	rekreace,kultura	vzdělávání	strav,ubytování	ostatní		

M1	M2	Q0	Q1	Q2	Q3	Q4	Q5	Q6	Q7	Q8	Q9	Q10	Q11
		0	0	0	0	0	0	0	0	0	0	0	0
		0	0	0	0	0	0	0	0	0	0	0	0
		0	0	0	0	0	0	0	0	0	0	0	0
		0	0	0	0	0	0	0	0	0	0	0	0
5,783	0	6527.1	1377.9	202.2	268.7	1514.3	367.3	128.5	575.4	305.4	652.7	53.5	385.3
6,285	0	7069.7	1491.1	219.1	336.1	1568.5	405.5	128.6	708.7	318.3	720.5	32.4	409.1
6,417	0	7137.9	1489.6	228.2	299.5	1587.0	429.0	109.0	709.6	328.6	751.3	47.1	453.9
6,771	0	7498.3	1536.2	248.1	450.5	1539.1	502.4	132.4	649.6	351.8	787.0	34.0	375.3
5,929	0	6430.6	1372.1	192.8	273.1	1376.9	362.7	146.0	691.1	278.7	630.7	48.7	376.9
6,506	0	6973.2	1461.8	213.5	367.8	1385.3	411.5	141.6	797.2	307.6	738.5	32.8	400.9
6,505	0	6861.8	1459.2	221.9	319.3	1471.3	407.4	109.0	705.8	296.8	734.9	45.9	438.9
7,093	0	7529.7	1590.7	242.0	500.0	1410.3	521.2	138.8	711.6	361.4	764.6	35.0	362.9
6,156	0	6425.9	1316.9	197.9	299.7	1393.2	391.3	140.8	554.0	315.4	657.7	55.8	374.7
6,673	0	6987.4	1441.3	212.6	376.0	1461.7	431.5	141.7	693.1	327.4	724.6	33.9	394.6
6,810	0	7130.9	1525.4	223.3	336.8	1476.0	456.4	118.3	717.8	334.1	748.0	49.8	438.2
7,205	0	7608.2	1620.7	243.2	508.7	1448.0	535.1	143.5	652.2	365.4	805.6	35.8	364.8
6,377	0	6684.5	1438.6	197.5	298.7	1431.5	396.8	150.9	576.1	357.1	674.8	68.3	373.5
6,903	0	7220.7	1535.4	215.3	372.6	1473.1	440.6	151.9	738.1	373.3	750.0	42.0	395.6
7,050	0	7389.9	1581.3	226.5	337.0	1511.3	467.7	128.1	763.5	387.8	782.3	61.0	439.8
7,440	0	7790.6	1620.2	246.3	506.4	1479.6	549.9	155.6	696.6	415.1	839.6	44.9	363.7
6,758	0	6924.2	1436.2	191.7	330.2	1447.8	401.8	155.1	727.6	323.4	721.6	56.3	390.9
7,132	0	7270.1	1525.2	207.1	387.0	1452.8	435.5	157.0	831.8	356.6	773.0	34.3	400.2
7,333	0	7452.2	1548.7	217.4	361.8	1498.4	468.0	129.4	859.3	361.7	824.7	50.1	439.2
7,672	0	7796.7	1629.4	234.2	532.7	1417.1	553.4	153.5	805.3	387.0	865.1	31.7	354.4
6,881	0	6936.5	1472.2	197.6	323.2	1467.2	431.4	151.0	695.8	355.4	705.6	51.7	357.5
7,560	0	7590.4	1540.6	209.2	428.9	1531.8	502.0	155.8	913.1	344.4	791.7	30.3	386.8
7,677	0	7661.7	1576.3	221.2	363.5	1571.7	520.6	124.3	943.4	324.5	801.9	41.0	425.4



8,041	0	7985.1	1664.7	242.2	555.2	1518.6	591.5	164.8	792.2	348.8	864.3	34.1	353.8
7,384	0	7239.2	1489.0	201.0	363.4	1495.3	496.0	168.3	724.8	346.7	732.9	51.7	380.2
8,123	0	7924.9	1638.0	221.6	456.8	1600.6	533.4	160.4	933.7	353.9	816.6	33.1	395.5
8,285	0	8028.1	1662.7	230.2	426.9	1632.3	571.1	143.7	915.9	362.5	821.7	49.3	444.1
8,794	0	8604.7	1768.6	253.0	630.3	1604.7	684.3	163.4	911.3	384.9	900.8	36.1	371.7
8,029		7750.0	1554.3	204.6	405.8	1574.7	535.6	188.4	887.0	361.1	764.0	58.9	390.6
8,685		8271.4	1651.1	222.1	491.5	1582.8	628.8	170.2	1031.4	368.0	880.1	33.2	425.7
8,783		8293.7	1663.5	222.3	459.9	1575.3	606.1	157.5	951.5	379.7	967.1	61.4	488.7
9,204		8585.8	1712.1	237.4	639.7	1573.1	719.1	212.3	788.8	409.1	973.0	38.2	390.7
8,647		7769.1	1542.6	192.1	433.7	1489.0	593.1	185.9	854.3	401.5	822.6	67.8	402.5
9,417		8400.5	1627.2	208.5	511.3	1556.2	612.3	184.1	1110.4	407.4	950.9	38.1	433.9
9,521		8433.1	1657.0	215.0	491.8	1570.8	604.8	161.4	1027.3	420.0	1027.9	62.4	483.7
9,830		8761.1	1769.4	223.3	660.6	1535.5	724.7	185.9	967.4	449.4	1044.6	41.4	396.3
9,057		7972.7	1548.9	184.6	443.5	1557.3	585.0	190.9	941.3	428.4	889.9	69.2	403.0
9,709		8539.1	1665.5	206.1	525.3	1586.8	625.5	198.7	1186.6	433.1	968.4	35.9	438.1
9,641		8531.9	1720.6	213.0	498.3	1618.9	656.8	166.4	969.0	449.5	1029.1	56.4	490.5
10,013		8884.6	1823.0	225.6	681.4	1557.1	758.2	198.4	999.0	475.4	1005.0	44.3	388.8
9,123		7974.7	1614.6	178.4	452.1	1562.7	535.6	178.5	940.1	447.3	882.6	67.3	394.6
9,680		8410.1	1660.1	194.0	508.4	1590.9	597.8	183.6	1148.3	449.1	957.0	56.7	405.4
9,743		8457.5	1692.5	200.3	521.6	1620.7	593.5	169.7	1000.0	453.4	1046.8	65.1	460.0
10,236		8900.9	1771.4	216.6	725.0	1600.3	754.6	193.6	1005.0	477.7	1036.5	43.4	378.8
9,223		7923.5	1516.0	179.1	464.0	1571.2	534.0	184.9	1001.9	448.7	858.0	72.9	388.9
9,822		8387.7	1625.1	198.3	528.7	1631.7	585.3	184.9	1115.5	444.0	971.5	35.5	419.9
9,902		8448.8	1618.7	204.7	510.7	1655.2	636.2	157.2	995.2	454.7	1077.9	52.5	467.2
10,371		8803.9	1690.7	219.2	695.5	1622.2	763.3	193.2	1026.8	474.4	1010.3	48.5	384.0
9,388		9388.0	1514.5	176.7	490.8	1512.3	498.4	181.9	971.9	456.5	823.2	74.7	400.8
9,815		8104.9	1589.6	196.5	530.7	1544.6	559.6	176.4	977.6	457.9	980.6	35.6	420.7
9,999		8256.8	1589.3	198.1	511.7	1549.7	619.6	145.4	1027.2	462.3	1035.1	66.7	470.1

10,395

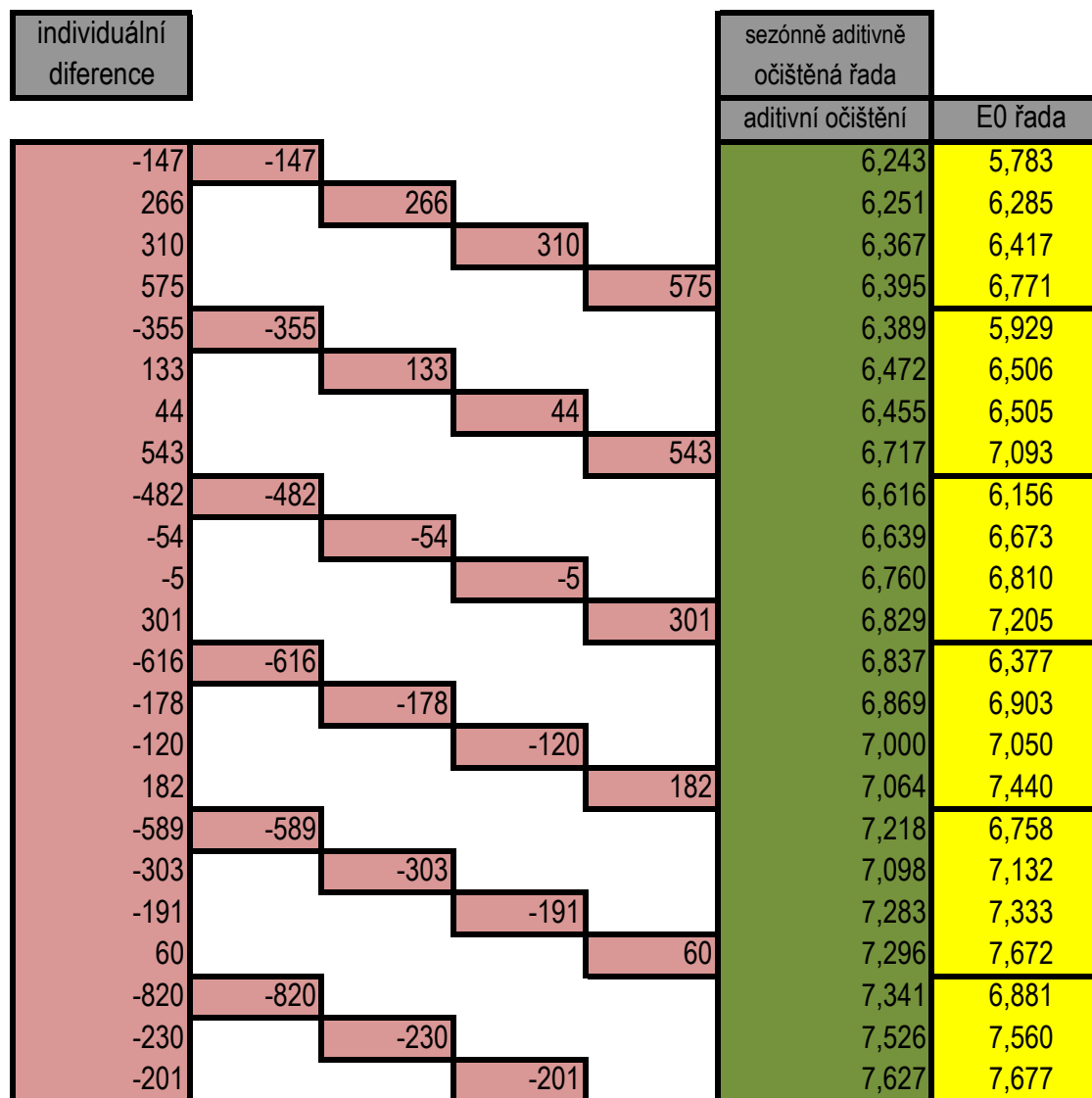
8583.8	1674.9	209.1	710.7	1524.2	718.2	175.44	1004.7	498.9	981.4	42.7	379.0
potraviny,Neal.	alko,tabák	oděvy,obuv	bydlení,energie	vybavení dom.	zdraví	doprava	spoje,telekom	rekreace,kultura	vzdělávání	strav,ubytování	

Q12	E0	E1	E2	E3	E4	E5	E6	E7	E8	E9	E10	E11	E12
0	0	0	0	0	0	0	0	0	0	0	0	0	0
0	0	0	0	0	0	0	0	0	0	0	0	0	0
0	0	0	0	0	0	0	0	0	0	0	0	0	0
0	0	0	0	0	0	0	0	0	0	0	0	0	0
664.7	5,783	1,320	181	327	1,166	389	102	542	237	590	46	319	563
663.1	6,285	1,418	197	407	1,214	429	103	691	247	647	28	340	563
645.9	6,417	1,427	207	360	1,249	453	88	711	255	698	41	379	549
772.6	6,771	1,507	226	542	1,219	530	107	647	273	717	30	316	659
633.9	5,929	1,368	178	325	1,158	383	119	669	228	584	43	320	554
619.8	6,506	1,491	199	438	1,172	435	116	790	251	692	29	342	551
593.0	6,505	1,484	207	378	1,283	431	91	703	241	740	41	377	529
778.6	7,093	1,605	227	594	1,234	552	117	691	292	734	32	315	700
704.7	6,156	1,359	186	351	1,265	414	120	528	264	638	51	329	649
702.4	6,673	1,460	202	438	1,317	457	122	673	276	700	31	350	649
686.9	6,810	1,469	213	387	1,355	482	104	692	284	754	46	390	634
819.8	7,205	1,551	232	582	1,322	564	126	630	304	775	34	325	760
715.2	6,377	1,394	189	333	1,317	417	134	560	296	660	65	335	678
714.4	6,903	1,497	206	414	1,370	460	137	713	308	723	40	356	678
696.8	7,050	1,507	217	366	1,410	485	117	733	318	780	58	398	662
831.4	7,440	1,591	236	551	1,376	568	141	668	340	801	43	331	794
712.7	6,758	1,452	185	351	1,387	413	141	713	305	700	54	360	697
682.1	7,132	1,542	204	411	1,386	446	146	826	332	749	33	381	676
670.7	7,333	1,541	217	377	1,434	476	122	849	332	842	49	426	668
815.1	7,672	1,618	233	562	1,376	560	144	790	358	840	32	348	811
734.7	6,881	1,484	198	328	1,454	434	148	668	327	700	51	355	734
753.0	7,560	1,556	209	434	1,518	503	156	904	332	779	30	386	753
725.7	7,677	1,559	221	358	1,567	519	126	966	344	826	41	425	725

862.1	8,041	1,653	242	548	1,549	588	166	812	368	860	35	357	863
812.4	7,384	1,492	203	347	1,585	491	172	727	363	741	53	387	823
810.4	8,123	1,656	224	433	1,703	527	167	957	373	819	34	405	825
790.4	8,285	1,686	233	394	1,740	562	153	947	393	862	51	457	807
944.2	8,794	1,781	256	590	1,701	674	174	914	418	899	38	384	965
855.1	8,029	1,604	214	377	1,707	527	201	879	390	777	62	407	885
857.8	8,685	1,732	243	464	1,730	620	187	1,052	396	888	35	447	893
862.5	8,783	1,735	255	424	1,736	597	172	980	404	1000	65	517	897
1025.0	9,204	1,885	278	600	1,754	709	231	818	430	972	41	418	1068
872.8	8,647	1,774	228	396	1,763	586	264	903	422	844	73	448	947
882.4	9,417	1,881	249	476	1,869	608	261	1,187	427	968	41	489	960
870.8791	9,521	1,889	266	449	1,918	600	232	1093	436	1070	68	550	951
999.1	9,830	1,987	286	617	1,904	716	267	951	457	1054	46	453	1091
915.8	9,057	1,758	239	400	2,026	578	270	898	431	905	77	463	1012
920.6	9,709	1,857	269	477	2,066	618	271	1,170	434	980	40	506	1020
879.3706	9,641	1,841	278	438	2,103	645	228	969	441	1061	63	568	1006
1043.1	10,013	1,947	296	618	2,018	743	273	991	463	1002	50	451	1161
945.5	9,123	1789	240	396	2055	526	253	942	437	887	76	464	1058
940.1	9,680	1851	264	452	2100	587	267	1169	437	958	64	480	1051
908.3	9,743	1877	276	447	2149	581	250	1010	438	1073	74	546	1020
1048.0	10,236	1984	298	638	2122	735	284	1011	461	1021	50	450	1180
941.7	9,223	1748	250	393	2118	518	272	1030	433	846	84	464	1067
930.1	9,822	1903	278	460	2206	566	275	1159	428	953	41	503	1051
916.9	9,902	1868	290	430	2256	612	236	1034	437	1079	61	563	1037
1045.0	10,371	1995	310	603	2224	732	294	1072	454	981	57	465	1184
927.8	9,388	1878	252	402	2152	478	294	1038	435	810	88	495	1067
921.0	9,815	1987	281	450	2201	535	286	1048	435	962	42	525	1061
919.3	9,999	1966	287	415	2213	588	240	1097	435	1032	79	589	1059

1076.8	10,395	2097	307	597	2175	683	290	1063	455	952	51	476	1248
ostatní		potraviny,neal.	alko,tabák	oděvy,obuv	bydlení,energie vybavení dom.		zdraví	doprava	spoje,telekom	rekreace,kultura	vzdělávání	strav,ubytování	ostatní

čtvrtletí	nobs	E0 řada	vyrovnaná
199901		0	0
199902		0	0
199903		0	0
199904		0	0
200001	1	5,783	5,930
200002	2	6,285	6,019
200003	3	6,417	6,107
200004	4	6,771	6,196
200101	5	5,929	6,284
200102	6	6,506	6,373
200103	7	6,505	6,461
200104	8	7,093	6,550
200201	9	6,156	6,638
200202	10	6,673	6,727
200203	11	6,810	6,815
200204	12	7,205	6,904
200301	13	6,377	6,993
200301	14	6,903	7,081
200303	15	7,050	7,170
200304	16	7,440	7,258
200401	17	6,758	7,347
200401	18	7,132	7,435
200403	19	7,333	7,524
200404	20	7,672	7,612
200501	21	6,881	7,701
200501	22	7,560	7,790
200503	23	7,677	7,878



200504	24	8,041	7,967
200601	25	7,384	8,055
200601	26	8,123	8,144
200603	27	8,285	8,232
200604	28	8,794	8,321
200701	29	8,029	8,409
200701	30	8,685	8,498
200703	31	8,783	8,586
200704	32	9,204	8,675
200801	33	8,647	8,764
200802	34	9,417	8,852
200803	35	9,521	8,941
200804	36	9,830	9,029
200901	37	9,057	9,118
200902	38	9,709	9,206
200903	39	9,641	9,295
200904	40	10,013	9,383
201001	41	9,123	9,472
201002	42	9,680	9,561
201003	43	9,743	9,649
201004	44	10,236	9,738
201101	45	9,223	9,826
201102	46	9,822	9,915
201103	47	9,902	10,003
201104	48	10,371	10,092
201201	49	9,388	10,180
201202	50	9,815	10,269
201203	51	9,999	10,357

74		74	7,665	8,041
-671	-671		7,844	7,384
-21	-21		8,089	8,123
53		53	8,235	8,285
473		473	8,418	8,794
-380	-380		8,489	8,029
187	187		8,651	8,685
197		197	8,733	8,783
529		529	8,828	9,204
-117	-117		9,107	8,647
565	565		9,383	9,417
580		580	9,471	9,521
801		801	9,454	9,830
-61	-61		9,517	9,057
503	503		9,675	9,709
346		346	9,591	9,641
630		630	9,637	10,013
-349	-349		9,583	9,123
119	119		9,646	9,680
94		94	9,693	9,743
498		498	9,860	10,236
-603	-603		9,683	9,223
-93	-93		9,788	9,822
-101	-101		9,852	9,902
279		279	9,995	10,371
-792	-792		9,848	9,388
-454	-454		9,781	9,815
-358	-358		9,949	9,999

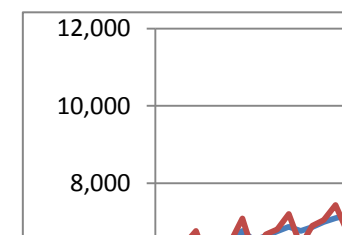
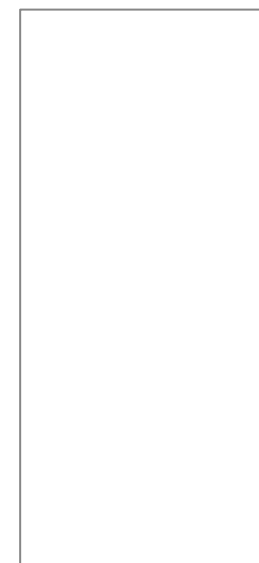
201204	52	10,395	10,446
--------	----	--------	--------

OLS parametry lineárního trendu
5841.41
88.5506

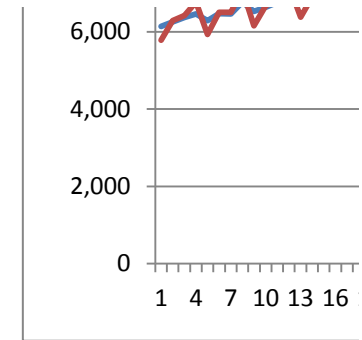
	-51			-51	10,019	10,395
	-0.004	-460.175	33.967	49.724	376.481	-0.001
			sezónní diference 1Q			-460.174
			sezónní diference 2Q			33.968
			sezónní diference 3Q			49.725
			sezónní diference 4Q			376.482
			zkouška standardizace diferencí			0.00000



individuální podíly	sezónně multiplikativně očištěná řada		rozdíly adit-multipl	
	multiplikativní očištění	E0 řada		
0.975217	0.9752	6,134	5,783	109
1.044278	1.0443	6,252	6,285	-1
1.050751	1.0508	6,371	6,417	-3
1.09287	1.0929	6,463	6,771	-69
0.943483	0.9435	6,289	5,929	100
1.020915	1.0209	6,472	6,506	0
1.006769	1.0068	6,458	6,505	-3
1.082931	1.0829	6,771	7,093	-54
0.927337	0.9273	6,530	6,156	86
0.991985	0.9920	6,638	6,673	1
0.999198	0.9992	6,761	6,810	0
1.043595	1.0436	6,878	7,205	-49
0.911968	0.9120	6,764	6,377	73
0.974846	0.9748	6,867	6,903	2
0.983309	0.9833	6,999	7,050	1
1.025045	1.0250	7,102	7,440	-38
0.91986	0.9199	7,169	6,758	50
0.959205	0.9592	7,095	7,132	3
0.974631	0.9746	7,280	7,333	3
1.007826	1.0078	7,323	7,672	-28
0.893524	0.8935	7,299	6,881	42
0.970534	0.9705	7,521	7,560	5
0.974477	0.9745	7,621	7,677	6



1.009336			1.0093	7,676	8,041	-11
0.916678	0.9167			7,833	7,384	12
0.997455		0.9975		8,081	8,123	8
1.006405			1.0064	8,225	8,285	10
1.056866			1.0569	8,394	8,794	23
0.954767	0.9548			8,517	8,029	-28
1.022014		1.0220		8,640	8,685	11
1.022887			1.0229	8,719	8,783	14
1.060976			1.0610	8,786	9,204	42
0.986697	0.9867			9,172	8,647	-65
1.063812		1.0638		9,368	9,417	15
1.064908			1.0649	9,452	9,521	19
1.088686			1.0887	9,383	9,830	70
0.993334	0.9933			9,607	9,057	-90
1.0546		1.0546		9,659	9,709	16
1.037237			1.0372	9,571	9,641	20
1.067093			1.0671	9,558	10,013	78
0.963156	0.9632			9,677	9,123	-94
1.012496		1.0125		9,630	9,680	16
1.009733			1.0097	9,672	9,743	21
1.051179			1.0512	9,771	10,236	89
0.938614	0.9386			9,783	9,223	-100
0.990646		0.9906		9,771	9,822	17
0.989875			0.9899	9,830	9,902	22
1.027662			1.0277	9,900	10,371	95
0.922165	0.9222			9,958	9,388	-110
0.955795		0.9558		9,764	9,815	17
0.965388			0.9654	9,927	9,999	23



0.995114				0.9951	9,923	10,395	96
	0.9421	1.0045	1.0066	1.0469	0.99929		
		sezónní indexy 1Q			0.9427		
		sezónní indexy 2Q			1.0052		
		sezónní indexy 3Q			1.0073		
		sezónní indexy 4Q			1.0476		
		zkouška standardizace indexů			1.00000		

