
Disaster Management



Eduard Bakoš, Ph.D.

Faculty of Economics and Administration

Outline

- Crisis
- Approach of Reinsurance Companies
- Structure of Security System in the CR
- Early warning system
- Case Study – Floods
- International Experience
- Conclusion

Crisis

- ***Definition by 3 elements (Seeger, Sellnow & Ulmer, 1998) :***
 - ***A threat to the organisation***
 - ***The element of surprise***
 - ***A short decision time***
 - ***Although crisis events are **unpredictable**, they are not **unexpected** (Coombs, 1999).***
 - Affection to many segments of society – businesses, churches, educational institutions, families, non-profits and the government
-

Disaster x Disaster Management (Red Cross definitions of terms)

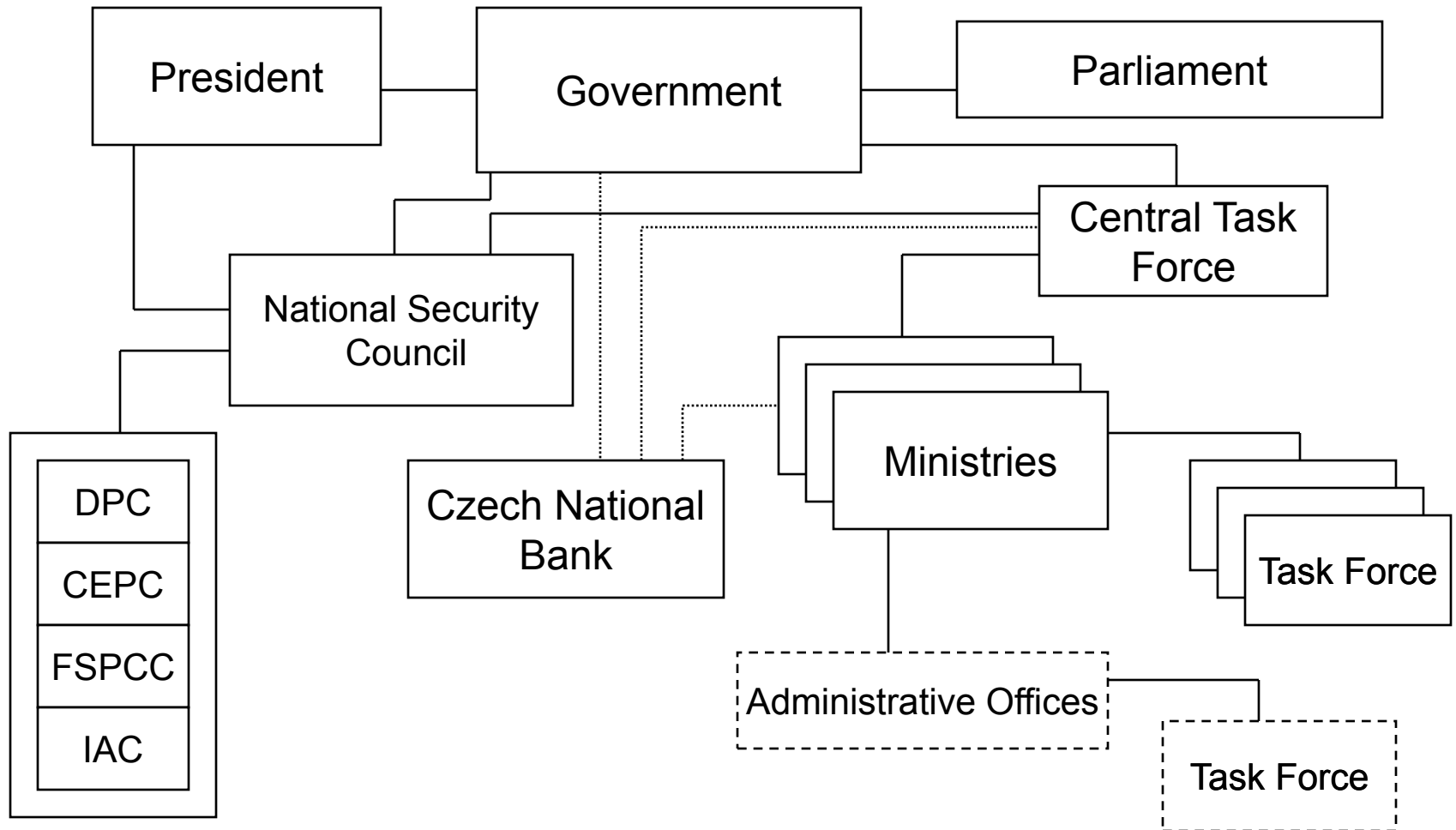
- **A disaster** is a sudden, calamitous event that seriously disrupts the functioning of a community or society and causes human, material, and economic or environmental losses that exceed the community's or society's ability to cope using its own resources. Though often caused by nature, disasters can have human origins
- **Disaster Management** can be defined as the organization and management of resources and responsibilities for dealing with all humanitarian aspects of emergencies, in particular preparedness, response and recovery in order to lessen the impact of disasters.

Reinsurance Companies and Disasters

- Swiss Re
- MunichRE – project – Natural Hazard Risk –
see website

<http://nathanlight.munichre.com/>

Structure of Security System in the CR (bodies)



Central Task Force

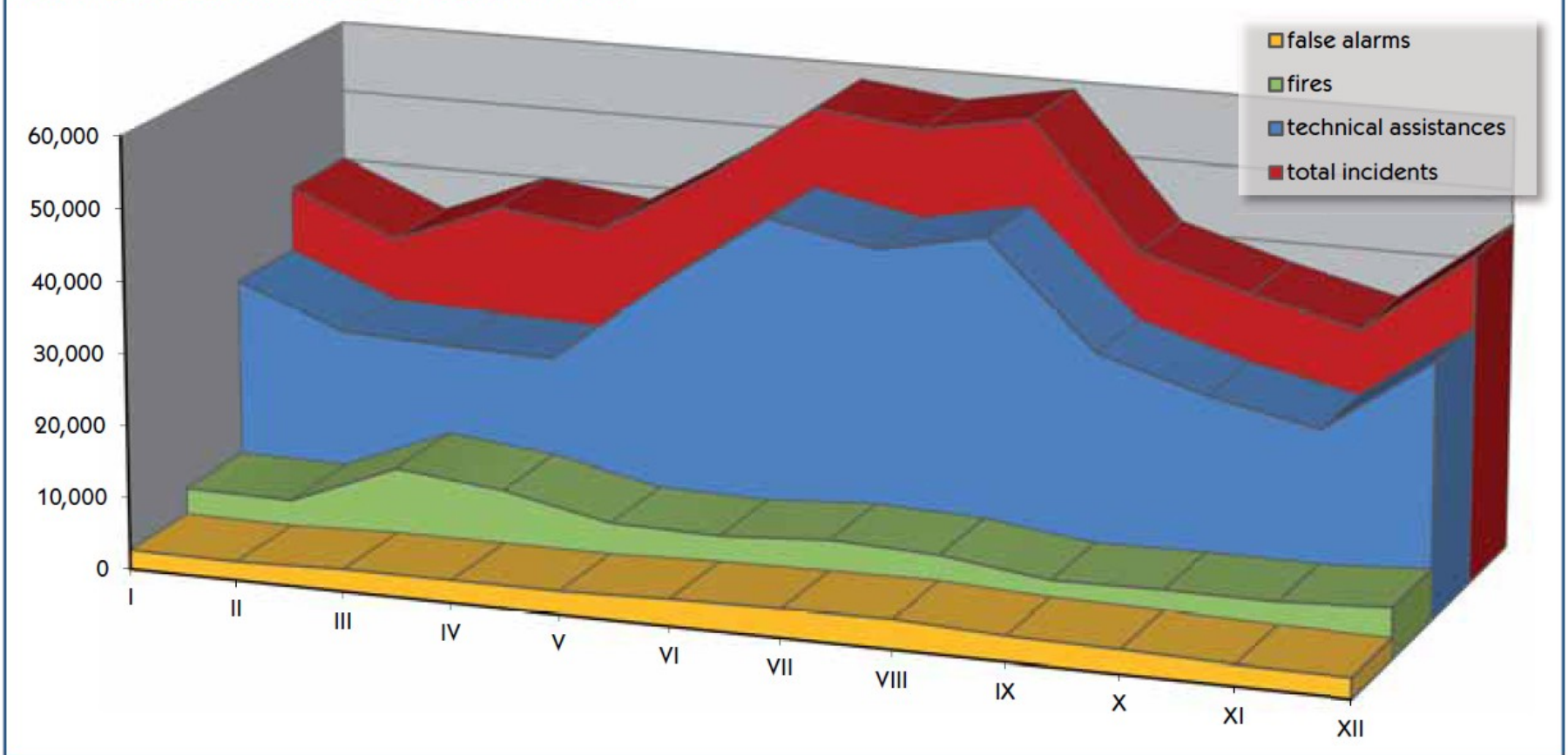
- working body responsible for finding solutions to crisis situations or other serious situations concerning the security interests of the Czech Republic
 - **coordinated by the Minister for Defence** in the event of an external military threat to the Czech Republic, in the event of the fulfillment of allied commitments abroad and in the event of the participation of the Czech Republic's armed forces in international operations to restore and keep peace,
 - **or coordinated by the Minister of the Interior** in case of other types of threat to the Czech Republic, in cases of the provision of large-scale humanitarian aid abroad, and in cases where the Czech Republic is involved in international rescue operations in the wake of accidents or natural disasters.
-

Early warning system of the CR

- early warning system based on international backgrounds and standards (e. g. ECURIE (Radiological/Nuclear), RAS BICHAT etc.)
 - special signals for warning
 - European emergency number: 112
- Czech Republic has extra call number for Police (158), Fire Rescue Service (150), Medical Service (155),

Incidents in the CR

Incidents in particular months 2010–2014 (number)



Source: Ministry of Interior, The General Directorate of Fire Rescue Service of CR, Statistical Yearbook 2014
<http://www.hzscr.cz/hasicien/article/statistical-yearbooks.aspx>

Case Study - Floods

- major disaster among others in the Czech Republic in the past years (1997, 2002, 2006, 2009, 2010, 2013)
- different reasons for such situations – geographical conditions (rainfall, riverbed etc.)
- 1997 - in total, 17 people lost their lives in the Czech Republic damage from the flood was estimated at between 70 and 73 billion CZK (approximately 3 billion EUR)

Case Study – Floods - 2013



Source: <http://rt.com/news/czech-prague-floods-evacuate-135/>

See more in VIDEO from MEDIA:

<http://rt.com/news/czech-prague-floods-evacuate-135/>

Main Problems

- cooperation, coordination and management of crisis situations are defined and provided in different acts but at the same time they are not realised in practice as they should be (subordination of leaders, orders to people etc.)
- Limit on budget: financing responsibilities are not obvious
- Personalities (crisis managers – leaders x officials)
- Plan (preparedness) x reality (real situation)
- NGOs x volunteers x
- Role of the Czech Army (soldiers)

International Experience – different approaches

- US – FEMA (Federal Emergency Management Agency)
- European Union – ECHO (Humanitarian Aid and Civil Protection)
- Global Disaster Alert and Coordination System
- NATO- CIMIC (Civil-Military Cooperation Centre of Excellence)
- NGOs – International Committee of Red Cross

Humanitarian Aid

- **European consensus on humanitarian aid**
- http://ec.europa.eu/echo/index_en.htm
- The Commission's **European Community Humanitarian Office (ECHO)** was created in 1992 as an expression of the European solidarity with people in need all around the world. In its 20 year existence it has provided €14 billion of humanitarian assistance to victims of conflict and disasters in 140 countries around the globe.

Financing

- In 2014 ECHO distributed humanitarian aid worth €1,1237 billion. While this worth represents approximately 1% of the European Union's total budget, it provided assistance to 121 million people affected by natural or man-made disasters, or protracted crises.

EU Civil Protection Mechanism

- http://ec.europa.eu/echo/what/civil-protection/mechanism_en

Global Disaster Alert and Coordination System

- http://ec.europa.eu/echo/policies/disaster_response/mic_en.htm
- <http://www.gdacs.org/monitor.aspx>

Sphere Handbook 2011

- The Sphere Handbook, *Humanitarian Charter and Minimum Standards in Humanitarian Response*, is one of the most widely known and internationally recognized sets of common principles and universal minimum standards in life-saving areas of humanitarian response.
- <http://www.spherehandbook.org/>
- VIDEO – Introduction of Handbook
- <http://www.youtube.com/watch?v=zpXxVg-Cv8A&feature=youtu.be>

Humanitarian Aid

- Czech Republic's contribution
- http://www.mzv.cz/jnp/en/foreign_relations/development_cooperation_and_humanitarian/information_statistics_publications/index.html

Questions

Central Task Force in the Czech Republic:

- a) is working body responsible for finding solutions to crisis situations
- b) is working body responsible for prevention activities of crisis situations
- c) is working body responsible for both tasks – prevention activities and solutions of crisis situations
- d) does not exist in the conditions of CR

The main disaster in the Czech Republic is:

- a) earthquake
- b) hurricane
- c) flood
- d) oil crisis

Contact

Eduard Bakoš, Ph.D.

Masaryk University

Faculty of Economics and Administration

Lipová 41a, 602 00 Brno, Czech Republic

bakos@econ.muni.cz

+420 549 493 091

Thank you for your attention!

