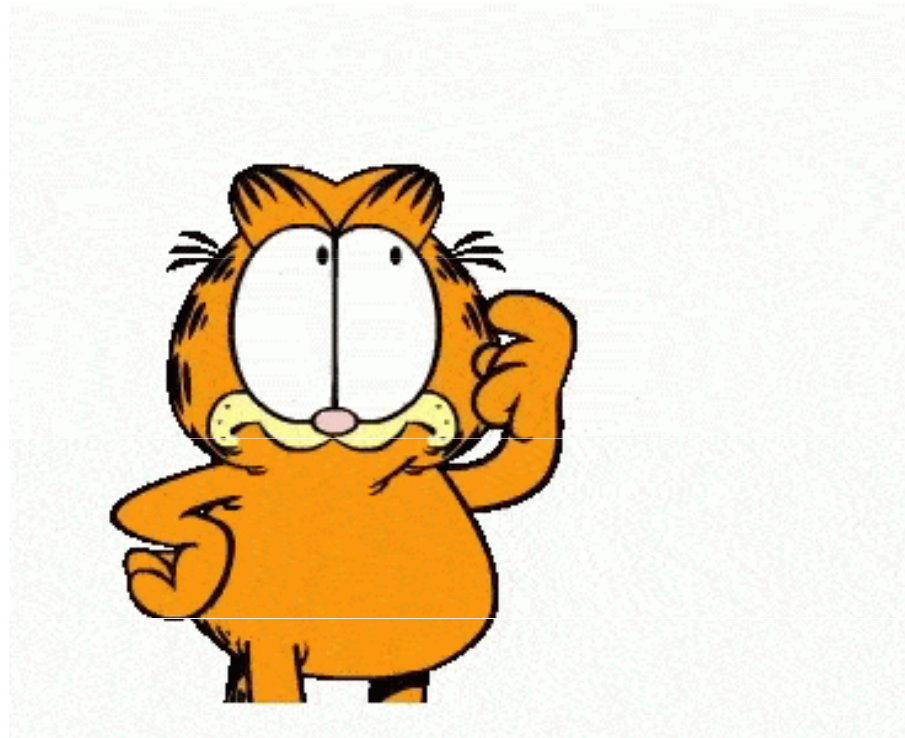


**MUNI
ECON**

Case Study

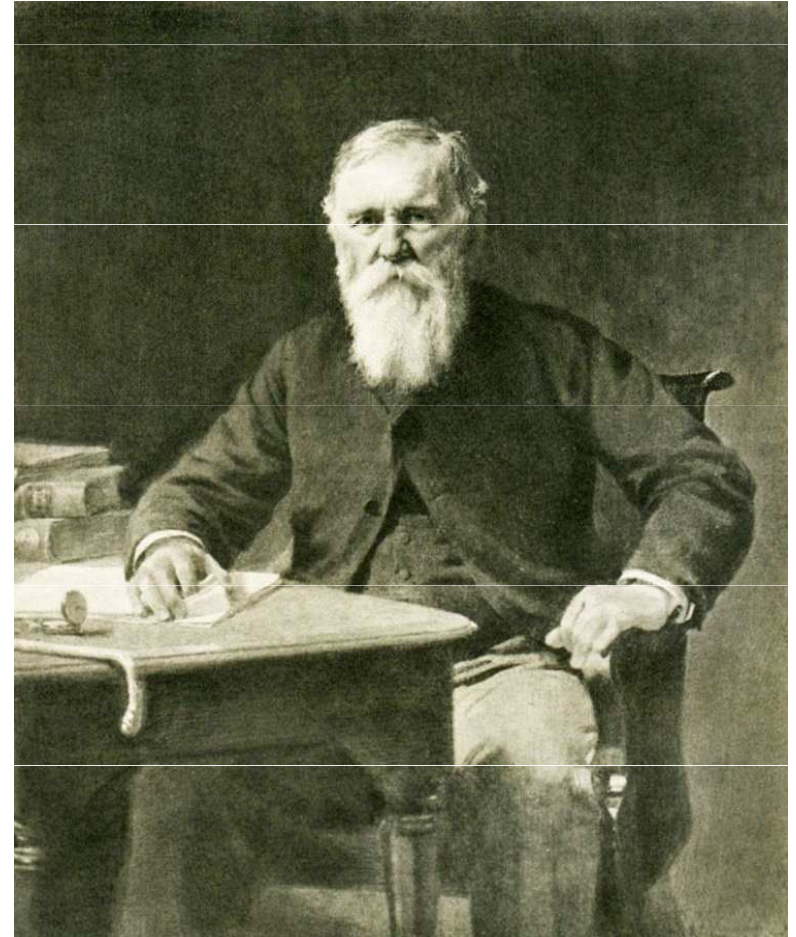
Prateek Kalia

What do you understand by case study?



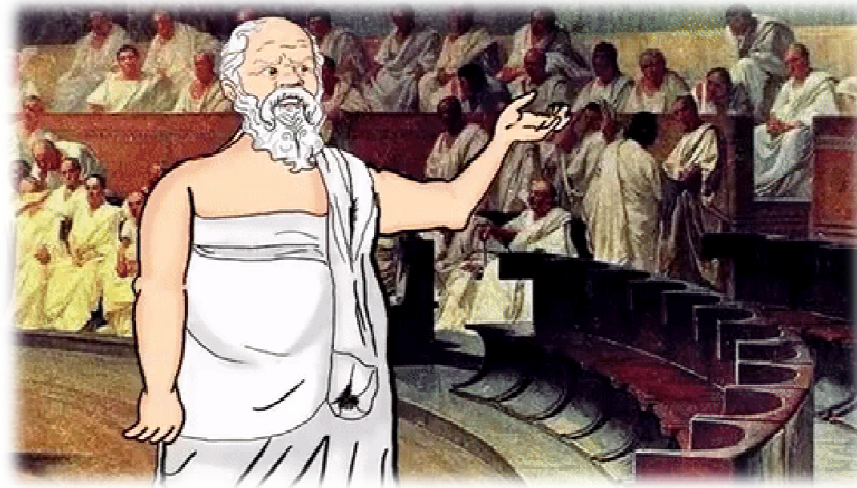
Origin

- The case method in **legal education** was invented by **Christopher Columbus Langdell**, Dean of **Harvard Law School** from 1870 to 1895. Langdell conceived of a way to systematize and simplify legal education by focusing on previous case law that furthered principles or doctrines.



What is case method?

- Uses a **court decision** to exemplify principles of law.
- Employs “hub-and-spoke” discussion between professor and student, otherwise known as the **Socratic method**.
- **Analyzes** the **dilemma after** it has been **resolved**.



The Harvard Business School case study approach

- Grew out of the **Langdellian method**.
- **Real-life examples** from the business world to highlight and analyze business principles.
- Consist of a **short narrative**, told from the point of view of a manager or business leader embroiled in a dilemma.
- Case studies provide readers with an **overview** of the main **issue**; background on the **institution, industry, and individuals** involved; and the events that led to the problem or decision at hand.



The Harvard Business School case study approach

- Cases are based on interviews or public sources; sometimes, case studies are **disguised versions of actual events** or composites based on the faculty authors' experience and knowledge of the subject.
- Cases are used to illustrate a particular set of learning objectives; as in real life, **rarely** are there **precise answers to the dilemma** at hand.

Participants

- Are put squarely **in the shoes of real people** wrestling with real dilemmas.
- Argue and **defend** their advice.
- Learn **how** to **approach** and **solve** problems.
- **Interact** with their **peers** through debate, presentations, and ad hoc **role plays**.

Lets start...



Reference

- *The Case Study Teaching Method*. (2022).
<https://casestudies.law.harvard.edu/the-case-study-teaching-method/>

M A S A R Y K

U N I V E R S I T Y