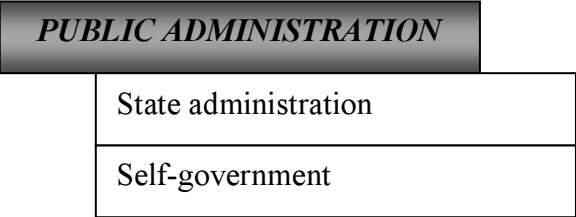
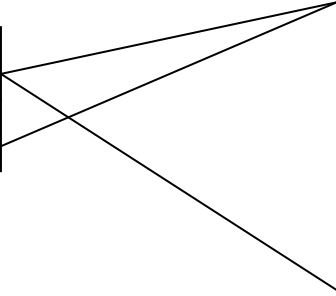
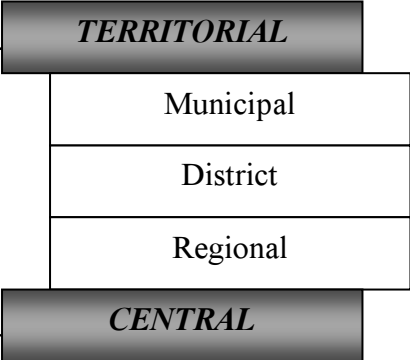


# PICTURE 1: Public administration in the Czech Republic - general scheme

The Czech public administration distinguishes the following components of public administration:

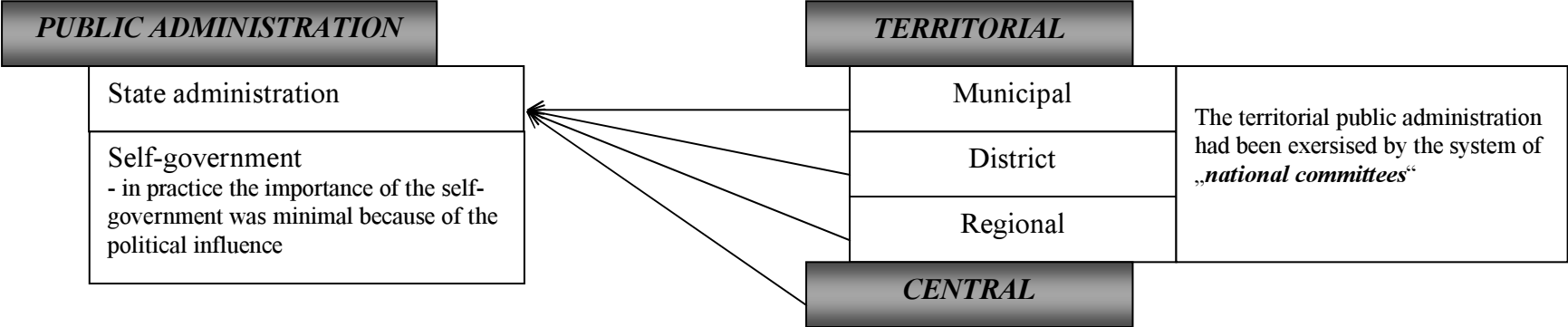


There have been the following levels of public administration in the Czech republic:



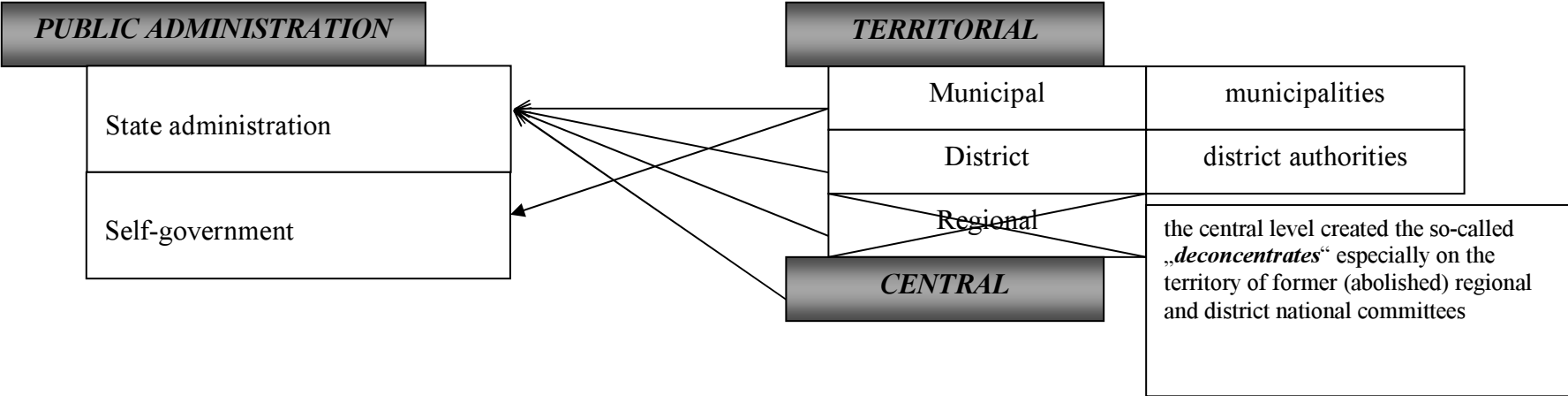
# Picture 2: Czechoslovak public administration: perion 1948 - 1990

In the period 1948 - 1990 the structure of the Czechoslovak public administration was (with a level of simplification) following:

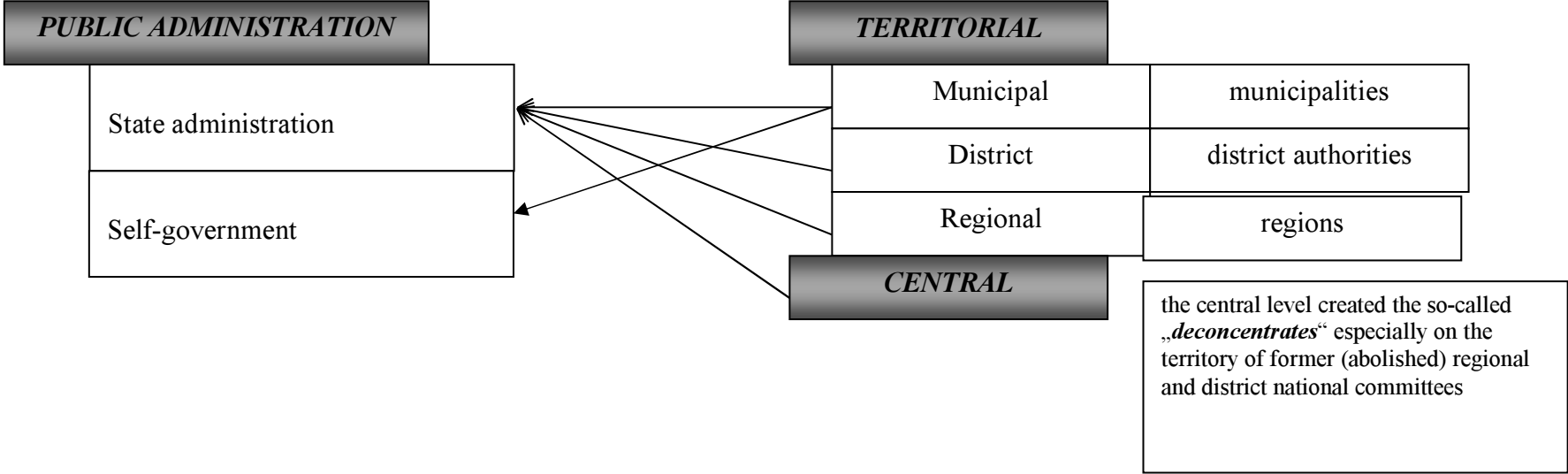


**PICTURE 3: Period 1990 - 2001 - real situation (THE LEGAL SITUATION WAS DIFFERENT)**

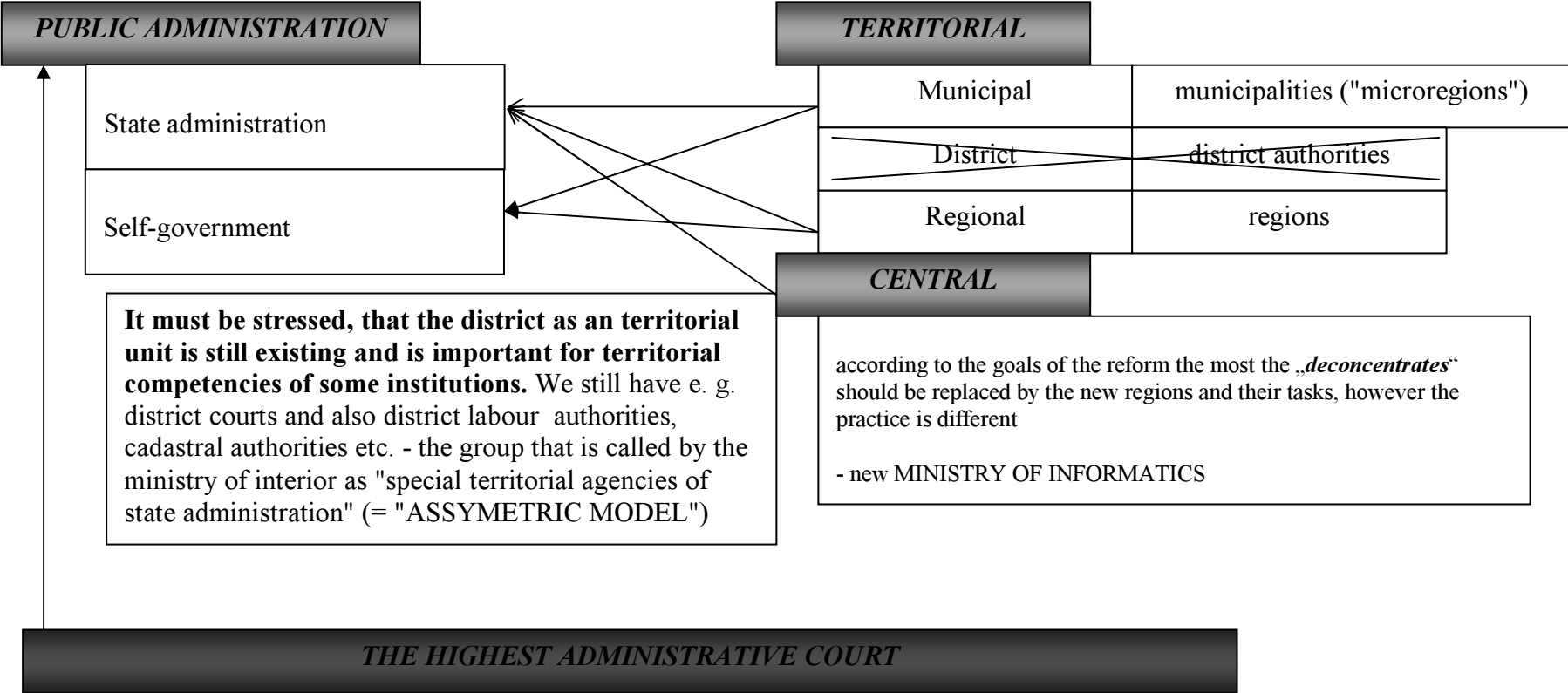
In the period of 1990 - 2001 (11. 11. 2000) the practice was following:



PICTURE 4 (Period 12. 11. 2001 - 31. 12. 2002)



**PICTURE 5: PUBLIC ADMINISTRATION 1. 1. 2003 TILL NOW**



**Table 1: MUNICIPALITIES AND HIGHER SELF-GOVERNMENTAL UNITS IN THE EU-15 and CR**

	<i>Number of municipalities</i>	<i>Average number of inhabitants in a municipality</i>	<i>First higher level of self-government</i>	<i>Second higher level of self-government</i>
France	36 565	1 600	96	22
BDR	13 854	5 900	323	-
ITALY	8 100	7 100	103	20
SPAIN	8 106	4 900	50	17
GREECE	1 033	10 200	50	-
AUSTRIA	2 539	3 400	-	-
BELGIUM	589	17 400	10	-
NETHERLANDS	504	31 500	12	-
FINLAND	448	11 500	-	-
PORTUGAL	278	36 000	-	-
SWEDEN	289	30 700	21	-
DANMARK	275	19 400	14	-
LUXEMBOURG	188	3 700	-	-
IRELAND	85	47 200	29	8
GREAT BRITAIN	433	*	7	-
CZECH REP.	6 258	1 645	14	-

**Table 2: STRUCTURE OF MUNICIPALITIES IN THE CZECH REPUBLIC (1. 1. 2001)**

<i>NUMBER OF INHABITANTS</i>	<i>NUMBER OF MUNICIPALITIES</i>	<i>NUMBER OF MUNICIPALITIES ( %)</i>	<i>TOTAL NUMBER OF INHABITANTS</i>
to 199	1 648	26,30	203 640
200 - 499	2 043	32	663 848
500 - 999	1 283	60	895 275
1 000 - 1 999	657	20,50	910 062
2 000 - 4 999	367	5,90	1 134 947
5 000 - 9 999	128	2,00	888 274
10 000 - 19 999	68	1,10	960 339
20 000 - 49 000	42	0,07	1 246 442
50 000 - 99 999	17	0,03	1 243 485
over 100 000	5	0,008	2 146 621
<b>Σ</b>	<b>6258</b>	<b>100,00</b>	<b>10 292 933</b>

**Table 3: "Regions of cohesion" - NUTS II in the Czech Republic**

<i>Region of Cohesion</i>	<i>Km<sup>2</sup></i>	<i>Number of inhabitants (1. 1. 2000)</i>
Prague	496	1 186 855
Mid Bohemia	11 014	1 111 354
Southwest	17 615	1 177 982
Northwest	8 650	1 131 974
Northeast	12 440	1 489 407
Southeast	13 991	1 658 761
MidMoravia	9 100	1 240 355
Moravia-Slezia	5 554	1 281 410
<b>Czech Republic</b>	<b>78 860</b>	<b>10 278 098</b>



## Regions of the Czech Republic<sup>1</sup>



<sup>1</sup> Source: <http://www.mvcr.cz> (the www site of the Ministry of interior of the Czech republic)

## NUTS 2 areas ("regions of coherence") and regions (in our lang. region = "kraj") (NUT 3) of the Czech Republic<sup>2</sup>

### Oblasti (NUTS 2) a kraje (NUTS 3) České republiky



<sup>2</sup> Source: <http://www.mvcr.cz> (the www site of the Ministry of interior of the Czech republic)

Regions (NUTS3) and former districts (NUTS4)<sup>3</sup>

Kraje (NUTS 3) a okresy (NUTS 4) České republiky



<sup>3</sup> Source: <http://www.czso.cz> (the www site of the Czech Statistical Authority)

# Organizational structure of municipalities

## MUNICIPAL (or TOWN) ASSEMBLY

- directly elected deliberative and decision-making body (from 5 to 55 members)

BOARDS: always the Financial board and Control board  
= initiative and control bodies

## MUNICIPAL (OR TOWN) COUNCIL

- executive organ elected by municipal assembly, not elected in municipalities where the municipal assembly has less than 15 members (in that case, municipal assembly fulfill its tasks); 5 - 11 members

COMMISSIONS  
= initiative and deliberative bodies

## MAYOR and DEPUTY MAYORS

- deputize the municipality, elected by municipal assembly from its own members;

## MUNICIPAL SECRETARY

- appointed by the mayor in municipalities with municipalities with "commissioned" municipal office and in municipalities with enlarged sphere of activity; the agreement of the director of regional committee is required

## MUNICIPAL OFFICE

- comprising the mayor, the mayor's deputies, the municipal secretary and employees of the municipality that are included into municipal office

# Organizational structure of regions

