

%t	y	c	g	i
1996.25	602672	301134	140053	171111
1996.5	608378	307370	132907	175899
1996.75	610950	310041	135732	177669
1997	610620	312145	137286	174814
1997.25	606173	313739	146399	157399
1997.5	604395	313898	143091	165054
1997.75	600282	311119	137770	160537
1998	600161	311256	136539	170972
1998.25	600683	306108	134707	165916
1998.5	601627	305963	139079	163015
1998.75	601789	306991	132402	160285
1999	601619	314472	141039	158219
1999.25	603923	313967	141394	158441
1999.5	607308	313736	143298	159282
1999.75	612216	314660	140951	156632
2000	618662	318063	145266	159234
2000.25	625324	315675	141504	163230
2000.5	635452	316547	145564	166796
2000.75	644266	321406	141846	170312
2001	648503	319869	142026	175468
2001.25	652594	323679	145561	175074
2001.5	656847	328016	147451	175056
2001.75	660351	332329	150739	176956
2002	662312	331771	149418	178842
2002.25	664710	334339	158042	180998
2002.5	669095	338387	157914	182546
2002.75	673702	340106	163144	183839
2003	678438	343580	161099	185383
2003.25	687252	351185	169765	175884
2003.5	692578	355896	168065	182212
2003.75	700535	360599	169629	188135
2004	706717	360271	171367	190960
2004.25	713662	361035	164116	182002
2004.5	721381	365349	167397	195215
2004.75	733759	372638	163344	190579
2005	746283	372902	161838	190274
2005.25	758498	372465	163993	190679
2005.5	772491	376643	169680	206332
2005.75	784898	381964	170825	203739
2006	798169	384346	162981	203413
2006.25	816050	386888	166515	206552
2006.5	828028	393141	165499	212135
2006.75	842194	399519	167162	210534
2007	853076	402058	164518	222668
2007.25	873324	407631	166490	244565
2007.5	871453	409936	163754	239418
2007.75	886196	414976	165176	235504
2008	899373	413868	171044	245121
2008.25	904077	415431	164983	268044

2008.5	913503	424921	167511	256929
2008.75	914770	428139	170404	247152
2009	900171	426842	171263	230958
2009.25	870470	424766	172503	225387
2009.5	860876	423227	172894	222585
2009.75	864267	420331	177548	221214
2010	872034	420890	176817	219610
2010.25	878565	425928	175149	209796
2010.5	887055	424920	175446	220189
2010.75	893082	423434	178297	230185
2011	898263	423759	174789	228554
2011.25	902832	423058	174533	205633
2011.5	905247	422821	173261	223609
2011.75	904833	420424	172811	224137
2012	903263	420773	171040	227215
2012.25	898294	413092	173638	208935
2012.5	896140	408661	171736	223621

ex	im
204110	223662
212036	233300
215164	241496
216982	239952
211447	242389
228731	248888
240470	251900
249150	256409
265061	268080
259562	268843
260678	269205
252699	264162
253748	267484
273757	281330
281711	278497
284520	292150
302166	305047
313912	320495
325688	331121
348181	350686
360872	370278
355174	360664
356348	363366
366739	375703
371864	380744
366937	378780
359862	381645
373980	396113
390913	400584
387802	405687
392610	411464
413330	433839
401139	407860
462317	473334
462459	464903
467189	464670
462171	443177
491064	474477
518120	499862
533969	502641
560237	509696
557245	523294
571707	535529
601143	565458
621577	586531
616660	583346
639797	615427
668081	621526
688445	644899

686171	638244
662428	622450
601623	557945
567631	533203
573507	523736
615148	563632
625852	562886
651713	586475
673008	613770
717680	678105
721857	648103
771377	680375
760159	674029
778842	702677
759337	657958
824947	701751
789935	681476

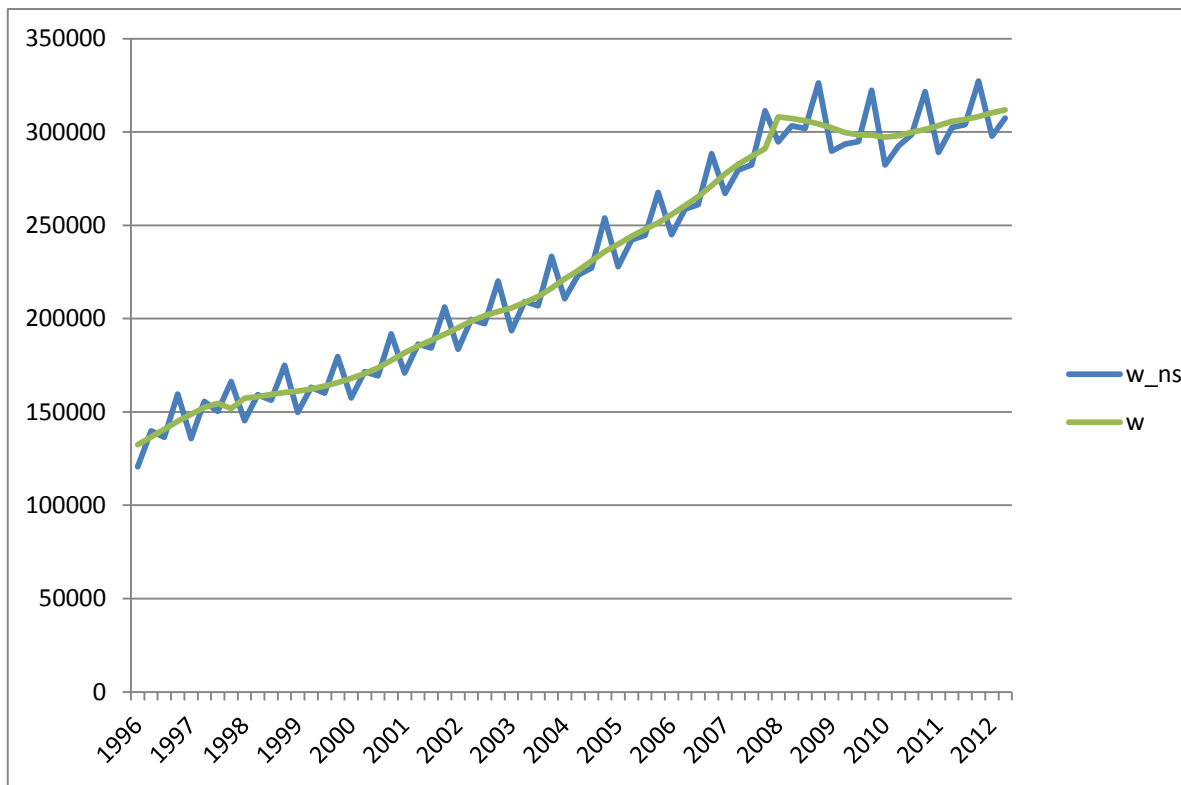
vektor casu	Mzdy a platy	Mzdy a platy (sezonne ocist Cenovahladina(CPI))	
		w	p
1996.25	120,696	130320.5	60.61
1996.50	139,873	137370.6	61.76
1996.75	136,475	139832.8	63.07
1997.00	159,616	147906.1	63.96
1997.25	135,726	146294.4	64.95
1997.50	155,672	153197.1	65.84
1997.75	150,366	154043.4	69.28
1998.00	166,241	153944.4	70.44
1998.25	145,420	156335.5	73.6
1998.50	159,202	157242.9	74.19
1998.75	156,248	160039.2	75.86
1999.00	174,954	161848.3	75.71
1999.25	149,789	160614.9	75.78
1999.50	163,201	161728.6	75.95
1999.75	160,159	163995.1	76.77
2000.00	179,675	166259.3	77.22
2000.25	157,455	168277.9	78.54
2000.50	171,626	170497.9	78.8
2000.75	169,429	173496.3	79.83
2001.00	191,762	177566.2	80.61
2001.25	170,876	182106.1	81.84
2001.50	186,363	185399.5	82.88
2001.75	184,182	188617	84.18
2002.00	206,274	191268.5	84.09
2002.25	183,594	194978.1	84.88
2002.50	199,581	198990.2	84.79
2002.75	197,231	201903	84.71
2003.00	220,067	204236.1	84.54
2003.25	193,439	204805.3	84.59
2003.50	209,098	209078.6	84.86
2003.75	206,926	211467.3	84.71
2004.00	233,247	216961	85.21
2004.25	210,721	222128.3	86.6
2004.50	223,312	224119.4	87.07
2004.75	227,178	231554.2	87.42
2005.00	253,811	236862.2	87.79
2005.25	227,896	239159.7	88
2005.50	242,146	243671.7	88.45
2005.75	244,703	248874.2	89.06
2006.00	267,526	250665.3	89.86
2006.25	244,923	255790.8	90.52
2006.50	258,631	260748.9	91
2006.75	261,033	265341.7	91.7
2007.00	288,316	270630.8	90.83
2007.25	267,129	278151.3	91.69
2007.50	279,624	282457.9	92.91
2007.75	282,313	286881.4	93.74
2008.00	311,372	292089.3	95.28

2008.25	294,633	306701.6	98.43
2008.50	303,343	307160.6	99.15
2008.75	301,951	306314.3	99.98
2009.00	326,195	305413.9	99.73
2009.25	289,651	302221.4	100.55
2009.50	293,481	297784.6	100.57
2009.75	294,862	298137	100.18
2010.00	322,247	301517	100.15
2010.25	282,392	295431.9	101.15
2010.50	292,554	297077.3	101.72
2010.75	298,579	300971.2	102.05
2011.00	321,626	301199.2	102.13
2011.25	289,040	302762.2	102.93
2011.50	302,374	307012.6	103.58
2011.75	303,992	305954.8	104.24
2012.00	327,238	306802	104.32
2012.25	297,762	311879.8	104.9
2012.50	307,315	311970.6	105.28

		vektor casu % t	Mzdy a platy (nsa) w_nsa	Mzdy a platy (sezonne w	Cenova hla p
1996	Q1	1996.25	120696	132504.7	60.61
	Q2	1996.50	139873	136611.6	61.76
	Q3	1996.75	136475	140776.1	63.07
	Q4	1997.00	159616	144918	63.96
1997	Q1	1997.25	135726	148774.4	64.95
	Q2	1997.50	155672	152354.4	65.84
	Q3	1997.75	150366	154664.4	69.28
	Q4	1998.00	166241	151793.7	70.44
1998	Q1	1998.25	145420	157378.3	73.6
	Q2	1998.50	159202	158172.4	74.19
	Q3	1998.75	156248	159474.6	75.86
	Q4	1999.00	174954	160436.1	75.71
1999	Q1	1999.25	149789	161191.1	75.78
	Q2	1999.50	163201	162275.2	75.95
	Q3	1999.75	160159	163780.1	76.77
	Q4	2000.00	179675	165696.6	77.22
2000	Q1	2000.25	157455	168047.9	78.54
	Q2	2000.50	171626	170624.9	78.8
	Q3	2000.75	169429	173709.6	79.83
	Q4	2001.00	191762	177551.3	80.61
2001	Q1	2001.25	170876	181624	81.84
	Q2	2001.50	186363	185257.4	82.88
	Q3	2001.75	184182	188443.1	84.18
	Q4	2002.00	206274	191572.3	84.09
2002	Q1	2002.25	183594	195126.9	84.88
	Q2	2002.50	199581	198646.7	84.79
	Q3	2002.75	197231	201615	84.71
	Q4	2003.00	220067	203761.2	84.54
2003	Q1	2003.25	193439	205663.5	84.59
	Q2	2003.50	209098	208561.2	84.86
	Q3	2003.75	206926	211885.9	84.71
	Q4	2004.00	233247	216416.6	85.21
2004	Q1	2004.25	210721	221341.5	86.6
	Q2	2004.50	223312	225710.3	87.07
	Q3	2004.75	227178	230975.8	87.42
	Q4	2005.00	253811	235925.7	87.79
2005	Q1	2005.25	227896	239866	88
	Q2	2005.50	242146	244052	88.45
	Q3	2005.75	244703	247915.3	89.06
	Q4	2006.00	267526	251352.7	89.86
2006	Q1	2006.25	244923	255728.6	90.52
	Q2	2006.50	258631	260489.3	91
	Q3	2006.75	261033	265387.5	91.7
	Q4	2007.00	288316	271205.7	90.83
2007	Q1	2007.25	267129	277604	91.69
	Q2	2007.50	279624	282702.4	92.91
	Q3	2007.75	282313	287051.5	93.74
	Q4	2008.00	311372	291045.6	95.28

2008	Q1	2008.25	294633	308111	98.43
	Q2	2008.50	303343	307272.1	99.15
	Q3	2008.75	301951	306083.5	99.98
	Q4	2009.00	326195	304277.4	99.73
2009	Q1	2009.25	289651	302264.1	100.55
	Q2	2009.50	293481	299601.6	100.57
	Q3	2009.75	294862	298440.3	100.18
	Q4	2010.00	322247	298317.9	100.15
2010	Q1	2010.25	282392	297317.4	101.15
	Q2	2010.50	292554	297941.3	101.72
	Q3	2010.75	298579	299889.3	102.05
	Q4	2011.00	321626	301314.7	102.13
2011	Q1	2011.25	289040	303369	102.93
	Q2	2011.50	302374	305622.7	103.58
	Q3	2011.75	303992	306703.1	104.24
	Q4	2012.00	327238	308180.6	104.32
2012	Q1	2012.25	297762	310230.6	104.9
	Q2	2012.50	307315	311823.7	105.28

dina(CPI)



a