

# Critical Path Method



© 2010 Vertex42 LLC

[HELP](#)

Start Date

1/11/2010

Finish Date

2/9/2010

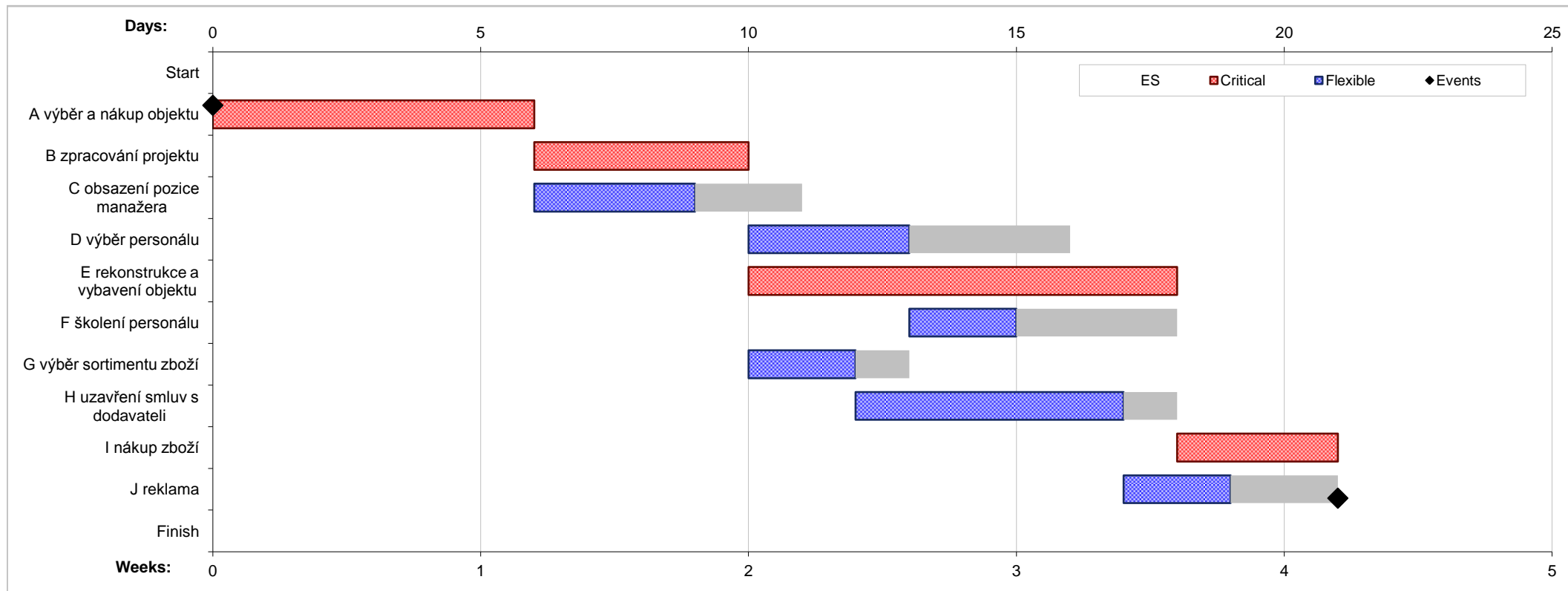
Days to Completion

21.00

## Times (in Days)

Time Distribution: Triangular

ID	Task Name	Predecessors (Enter one ID per cell)	Times (in Days)			Duration (exp. time)	ES	EF	LS	LF	Slack
			O (min)	M (most likely)	P (max)						
10	Start					0.00	0.00	0.00	0.00	0.00	0.00
20	A výběr a nákup objektu	10	6	6	6	6.00	0.00	6.00	0.00	6.00	0.00
30	B zpracování projektu	20	4	4	4	4.00	6.00	10.00	6.00	10.00	0.00
40	C obsazení pozice manažera	20	3	3	3	3.00	6.00	9.00	8.00	11.00	2.00
50	D výběr personálu	30 40	3	3	3	3.00	10.00	13.00	13.00	16.00	3.00
60	E rekonstrukce a vybavení objektu	30	8	8	8	8.00	10.00	18.00	10.00	18.00	0.00
70	F školení personálu	50	2	2	2	2.00	13.00	15.00	16.00	18.00	3.00
80	G výběr sortimentu zboží	30 40	2	2	2	2.00	10.00	12.00	11.00	13.00	1.00
90	H uzavření smluv s dodavateli	80	5	5	5	5.00	12.00	17.00	13.00	18.00	1.00
100	I nákup zboží	60 70 90	3	3	3	3.00	18.00	21.00	18.00	21.00	0.00
110	J reklama	90	2	2	2	2.00	17.00	19.00	19.00	21.00	2.00
120	Finish	100 110				0.00	21.00	21.00	21.00	21.00	0.00



## Holidays to Exclude from Working Days

See help (F1) on the WORKDAY() function

This worksheet lets you create a list of dates to be excluded from the number of Working Days. The WORKDAY() function already excludes weekends, so you only need to list dates for holidays and other non-working days. If your project spans more than one year, make sure you add dates for each year. The named range, **holidays**, is a dynamic named range ending at the last blank cell in column A. The comments column is just for your reference.

Date	Non-Working Days
1/1/2009	New Year's Day
1/1/2011	
12/25/2009	Christmas
12/25/2010	

# Terms of Use



© 2011 Vertex42 LLC. All rights reserved.

This template is considered a copyrighted work under the United States and other copyright laws and is the property of Vertex42 LLC. The items listed below are additional points to help clarify how you may use this template.

---

## Not for Resale or Public Sharing

---

You may make archival copies and customize this template only for your **personal use or use within your company or organization** and not for resale or public sharing.

**You may not remove or alter any logo, trademark, copyright, disclaimer, brand, terms of use, attribution, or other proprietary notices or marks within this template.**

**This template and any customized or modified version of this template may NOT be sold, distributed, published to an online gallery, hosted on a website, or placed on a public server.**

---

## Limited Private Sharing

---

Provided that you observe the above terms, you may share your edited version of this template **\*privately\*** with those specific people who **\*\*require\*\*** access to it within your immediate family, organization, or company.

\* "Privately" means only accessible to those few people who you expressly give permission to view or edit your file. It is your responsibility to ensure that adequate security measures are used so that your file is **not available to the public**.

\*\* Examples of acceptable private sharing with people who "require access" may include (a) sharing a budget spreadsheet with a spouse, (b) sharing a project schedule with your project team, or (c) sharing a timesheet with your employee or manager.

See the following page on Vertex42.com for the complete license agreement and examples of other allowed uses:

[http://www.vertex42.com/licensing/EULA\\_privateuse.html](http://www.vertex42.com/licensing/EULA_privateuse.html)

---

## Disclaimer

---

This template is provided for informational or educational use only and is not intended to be relied on as medical, financial, legal, or other professional advice.

Vertex42 LLC makes no guarantee or representations about this template, or the accuracy or completeness of the content contained within this template.

Vertex42 LLC encourages you to seek the aid of a qualified professional before making decisions regarding health, financial, or legal issues.

