

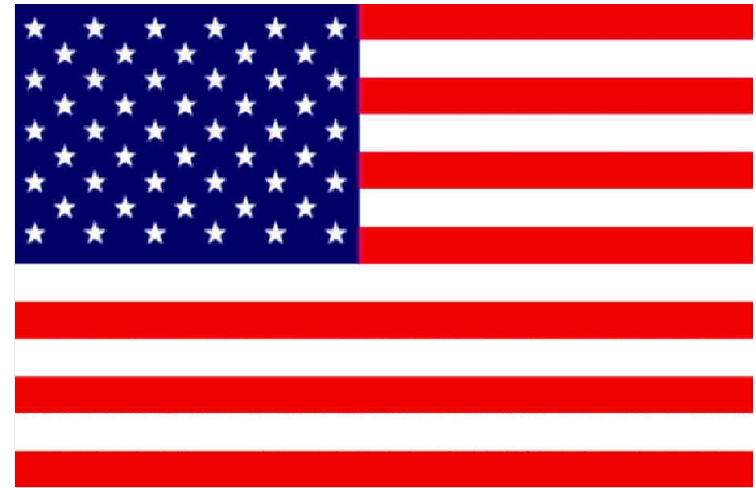


JBoss Portal

Radoslav Husár

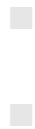
PV219 Seminář webdesignu, 11th March 2009

Language Selection



Out tonight's agenda

- What is portal and why use it?
- Java specifications
- Introducing JBoss portal
- Real life use case
- How to obtain and deploy JBoss portal
- Live demo with “hands on”
- Q&A

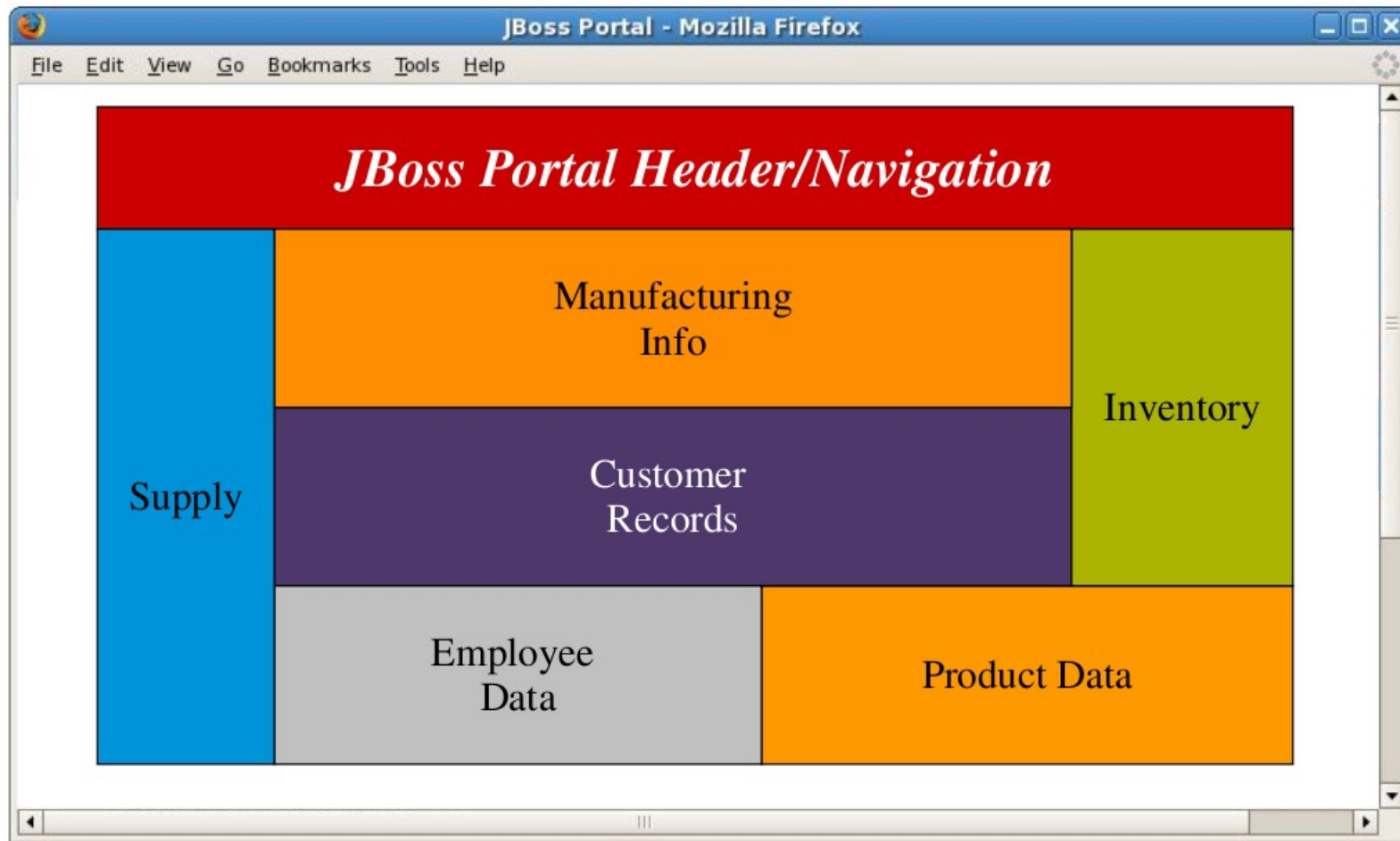


Get ready... 40 slides and a demo ahead!

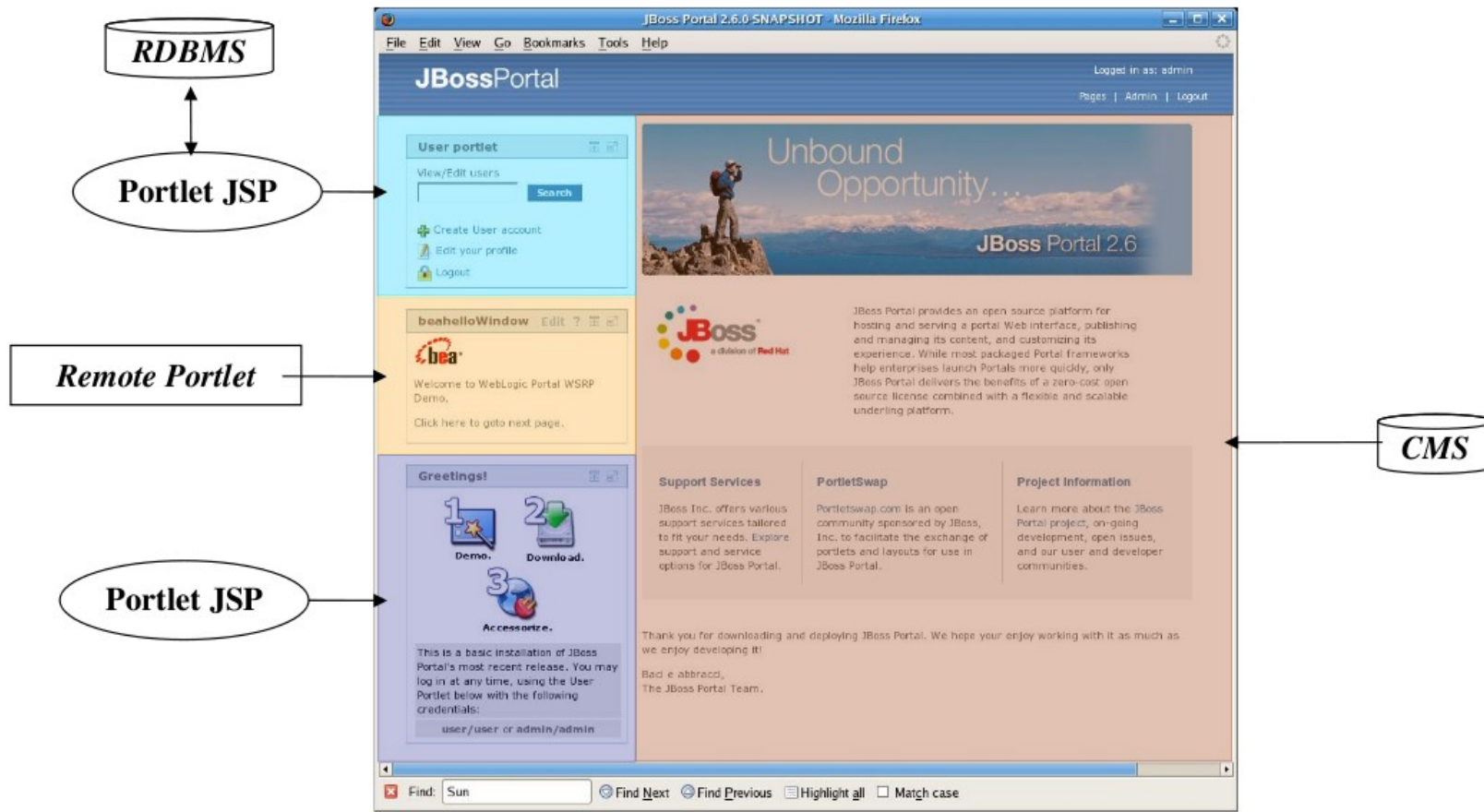


Portals in general

Portals provide Integration & Aggregation



Portal consumption



Why use a portal?

Why not just use a “regular” web framework?

- Requires all components to be written using the same technology
- Enterprise environments, soon or later, deal with multiple technologies
- Some web frameworks have support for portals

Speed up deployment of a portal

- Existing standard portlets
- Build-in authentication (with SSO)

Integration of different technologies

User portlet

Welcome

You are currently not logged in.

You can create an account.

I'm a CMS file ! With a JBosslogo under



Greetings!

1  **Demo.** 2  **Download.** 3  **Accessorize.**

This is a basic installation of **JBoss Portal 2.6.3-GA**. You may log in at any time, using the *Login* link at the top-right of this page, with the following credentials:

user/user or admin/admin

If you are in need of guidance with regards to navigating, configuring, or operating the portal, please view our online documentation.

Programme TV

Mardi 22 Janvier 2008

	La Cauetienne 17:35 - 40 mn.	X
	Rex 17:10 - Serie de 45 mn.	X
	Des chiffres et des lettres 17:35 - 25 mn.	X
	L'île des âmes perdues 16:25 - Film de 105 mn.	X
	L'Europe, les pieds dans l'eau	X

WSRPWindow



Welcome to WebLogic Portal WSRP Demo.

[Click here to goto next page.](#)

HelloWorld JSF Portlet

First Name:

Last Name:

PHP Poll Portlet

Which Portal do you prefer ?

- JBoss Portal
- The portal of JBoss

[View Results](#)

Bart Simpson Phrases

Die Simpsons - Der Film
Das Kinoabenteuer auf DVD. Nur 19,95 Fr!
Lieferbar ab sofort.

Ads by Google

 **Hey, it's a teddy bear...Ew! Gross! It's probably diseased or something...Here Maggie.**

[View More Bart Simpson Phrases](#)

Struts MailReader Demo

CMS, JSF, JSP, PHP, Netvibes, Google...

User portlet

Welcome

You are currently not logged in.

[MyFaces JSF Portlet](#)

Greetings!

1  Demo. 2  Download. 3  Accessorize.

This is a basic installation of **JBoss Portal 2.6.3-GA**. You may log in at any time, using the *Login* link at the top-right of this page, with the following credentials:

If you are in need of guidance with regards to navigating, configuring, or operating the portal, please view our online documentation.

JSP Portlet

WSRPWindow



Welcome to WebLogic Portal WSRP Demo.

[Click here to goto next page.](#)

WSRP Content

HelloWorld JSF Portlet

First Name:

Last Name:

Sun RI JSF Portlet

PHP Poll Portlet

Which Portlet do you prefer?

JBoss Portal

The portal of JBoss

PHP Portlet

I'm a CMS file ! With a JBosslogo under



CMS Content

Programme TV

Mardi 22 Janvier 2008

Netvibes Widget

	La Caquetidienne 17:35 - 40 mn.	<input type="button" value="X"/>
	Rex 17:10 - Serie de 45 mn.	<input type="button" value="X"/>
	Des chiffres et des lettres 17:35 - 25 mn.	<input type="button" value="X"/>
	L'île des âmes perdues 16:25 - Film de 105 mn.	<input type="button" value="X"/>
	L'Europe, les nids dans l'eau	<input type="button" value="X"/>

Bart Simpson Phrases



Die Simpsons - Der Film
Das Kinoabenteuer auf DVD. Nur 19.95 Fr.!
Lieferbar ab sofort.

Ads by Google

Hey, it's a teddy bear...Ew! Gross! It's probably diseased or something...Here Maggie.

[View More Bart Simpson Phrases](#)

Google Widget

Struts MailReader Demo

Portals and SOA

Split your services

- Maintenance
- Lifecycle
- Technology independent

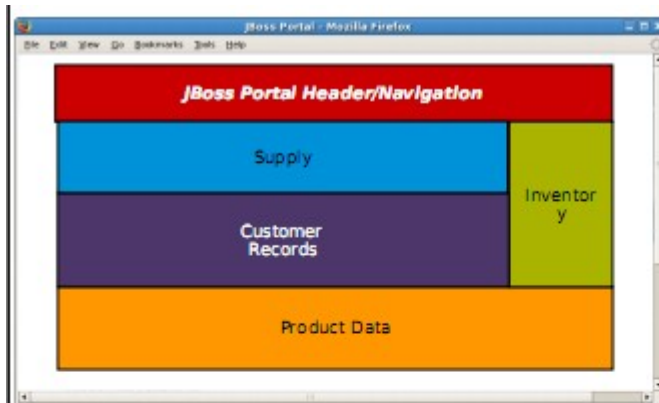
Split your web applications

- Maintenance
- Lifecycle
- Technology independent
- Don't split the user interface !

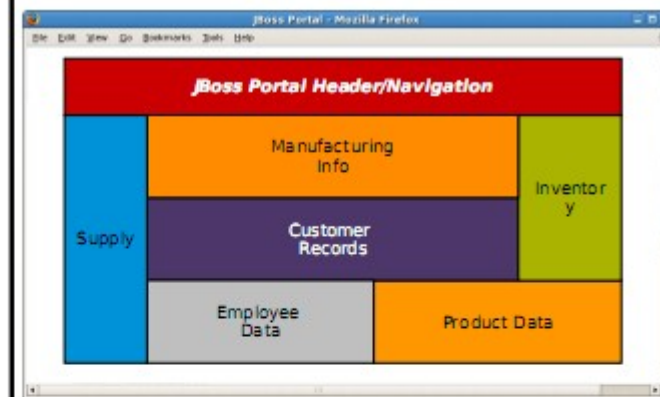
The user doesn't like to have to deal with multiple applications

- *A portal is a window on the services - Unify access to your web applications*

Multiple users – Multiple views



CSR Portal



Manager Portal



Customer Portal

When to use a portal?

- Simple application like a web blog – No?
- Intranet, Insurance Portal, Banking & Finance Portal – Yes!
- Have aggregation and integration of content from different sources?
- Need more than simple personalization?



JBoss Portal

in general



JBoss Portal

Focus on core portal functionality

Aggregation

- Provides a standards-based environment for serving a portal's web interface and publishing/managing portal applications and content
- Consistent look and feel

Performance and scalability

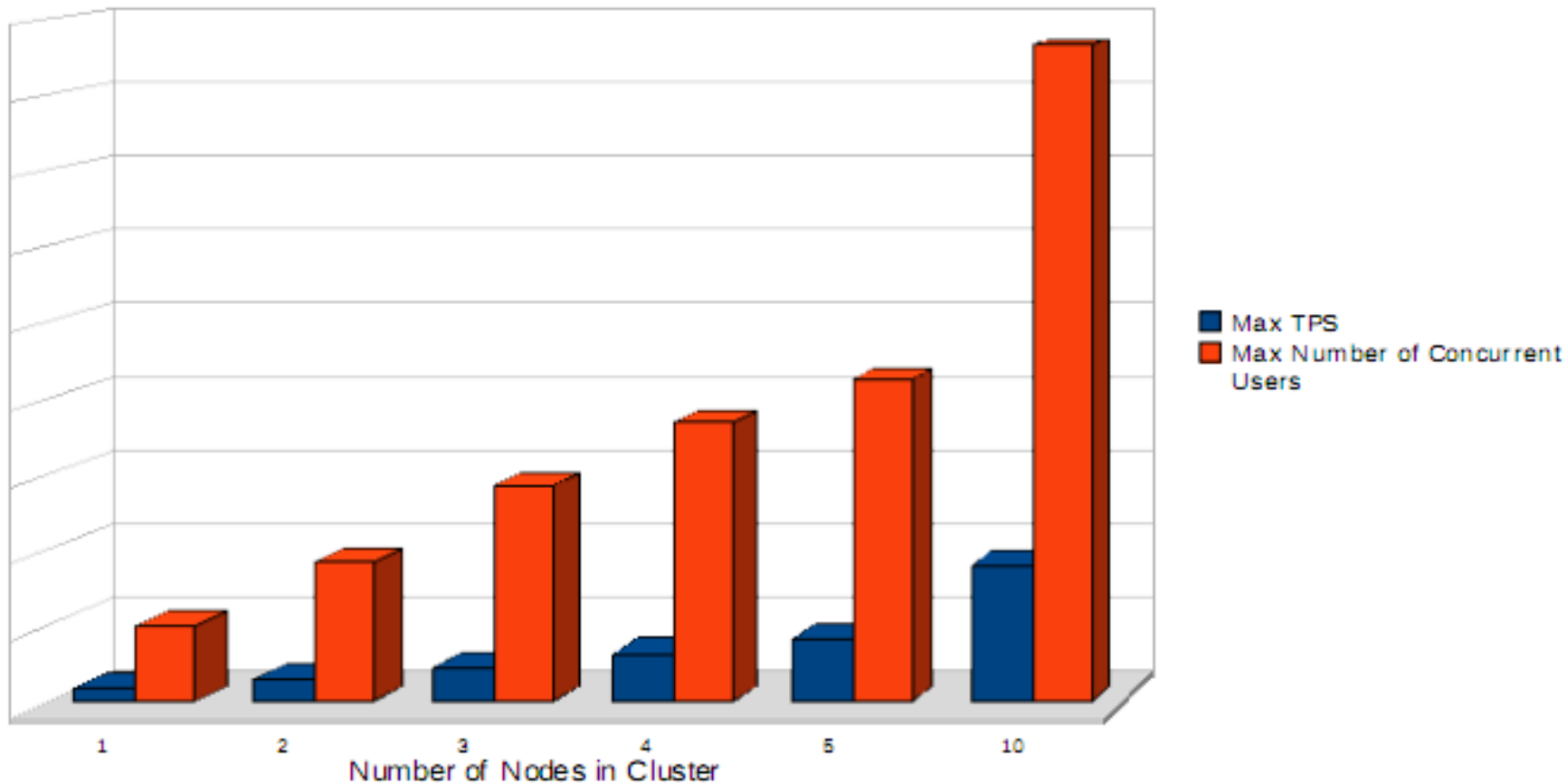
Centralized security

- Single Sign On across elements of the portal
- Identity manager

Presentation framework (Portal vs Portlet level)

Scalability

- JBoss Enterprise Portal Platform scales well
- Don't forget you still need to scale other resources (e.g. database)



Standards based

- JSR-168: Portlet Specification
(Final release: Oct 27th, 2003)
- JSR-286: Portlet Specification 2.0
(Proposed Final Draft: Dec 13th, 2007)
- JSR-301: Portlet Bridge Specification for JavaServer Faces
(Early Draft Review 2: Sep 10th, 2007)

What is a Portlet?

User interface component targeted at the portal ecosystem

- implementing given interface
- standardized

Similar to web applications in

- Deployed in a portlet container
- Can better focus on single task
- Can delegate common (→ shareable) concerns
- Reusable



What is new in JSR-286 Portlet Specification 2.0

- Better interaction with a portal in a various manners

Public render parameters feature (to show improved interoperability)

- Use cases

Several portlets on the same page share the same zipcode, and are able to display informations related to the geographic location

- Weather
- Map
- Address

Public render parameters use case - XML

```
<portlet-app>
  <portlet>
    <portlet-name>GoogleMap</portlet-name>
    ...
    <supported-public-render-parameter>zipcode</supported-public-render-parameter>
    ...
  </portlet>
  <public-render-parameter>
    <identifier>zipcode</identifier>
    <qname xmlns:g='urn:google'>g:zipcode</qname>
  </public-render-parameter>
</portlet-app>
```

Public render parameters use case - Java

```
public void render(RenderRequest req, RenderResponse resp)
{
    String zipcode = req.getParameter("zipcode");
    render(zipcode, resp);
}

public void processAction(ActionRequest req,
ActionResponse resp) {
    String newZip = req.getParameter("zipcode");
    resp.setRenderParameter("zipcode", newZip);
}
```

Leverage of other JBoss Enterprise Middleware Software components

JBoss SX

- JAAS based domain security subsystem

JBoss Cache

- Performance
- Fault tolerance

Hibernate

- ORM
- database independence
-



Leverage of other JBoss Enterprise Middleware Software components 2

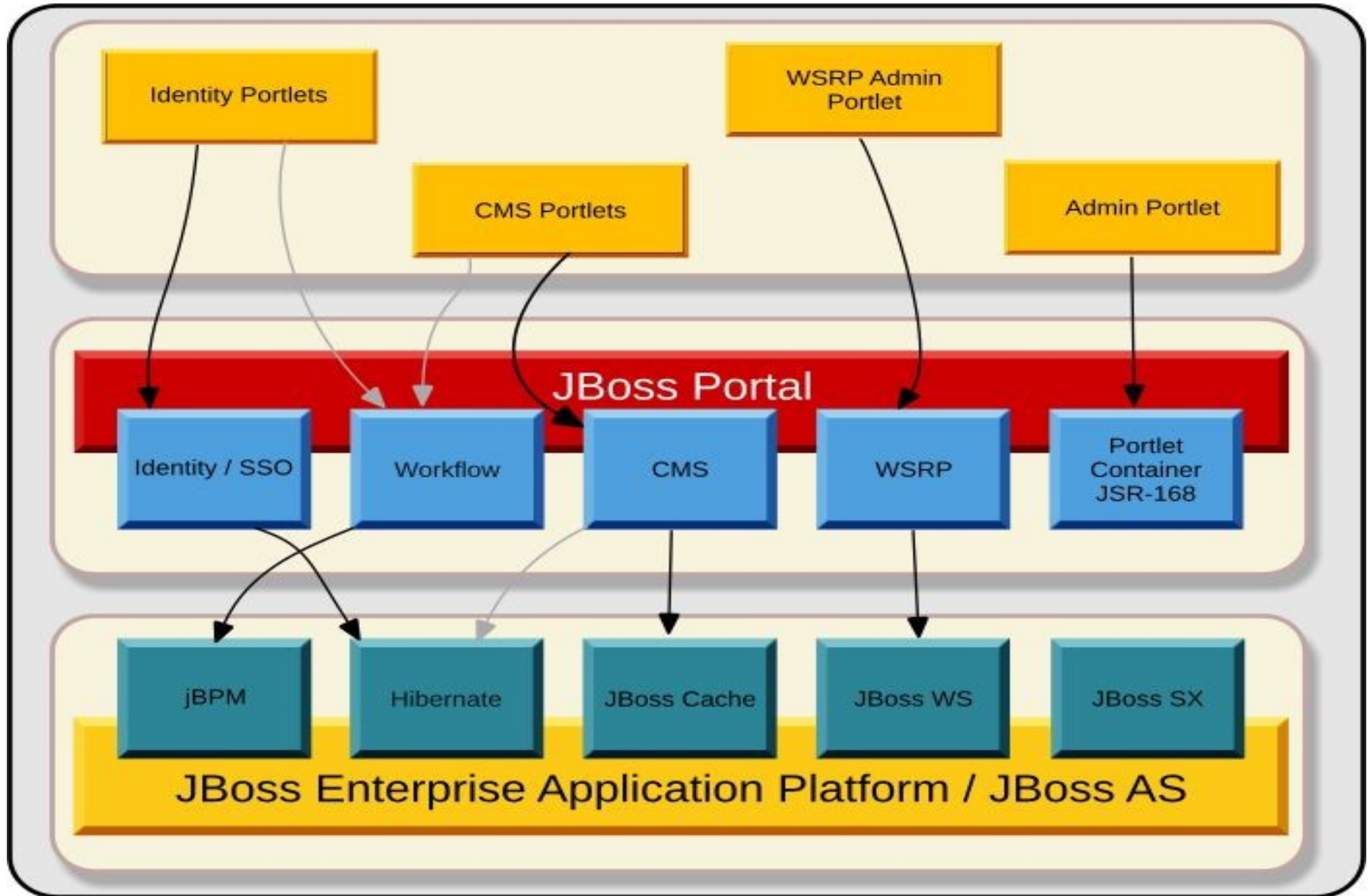
jBPM

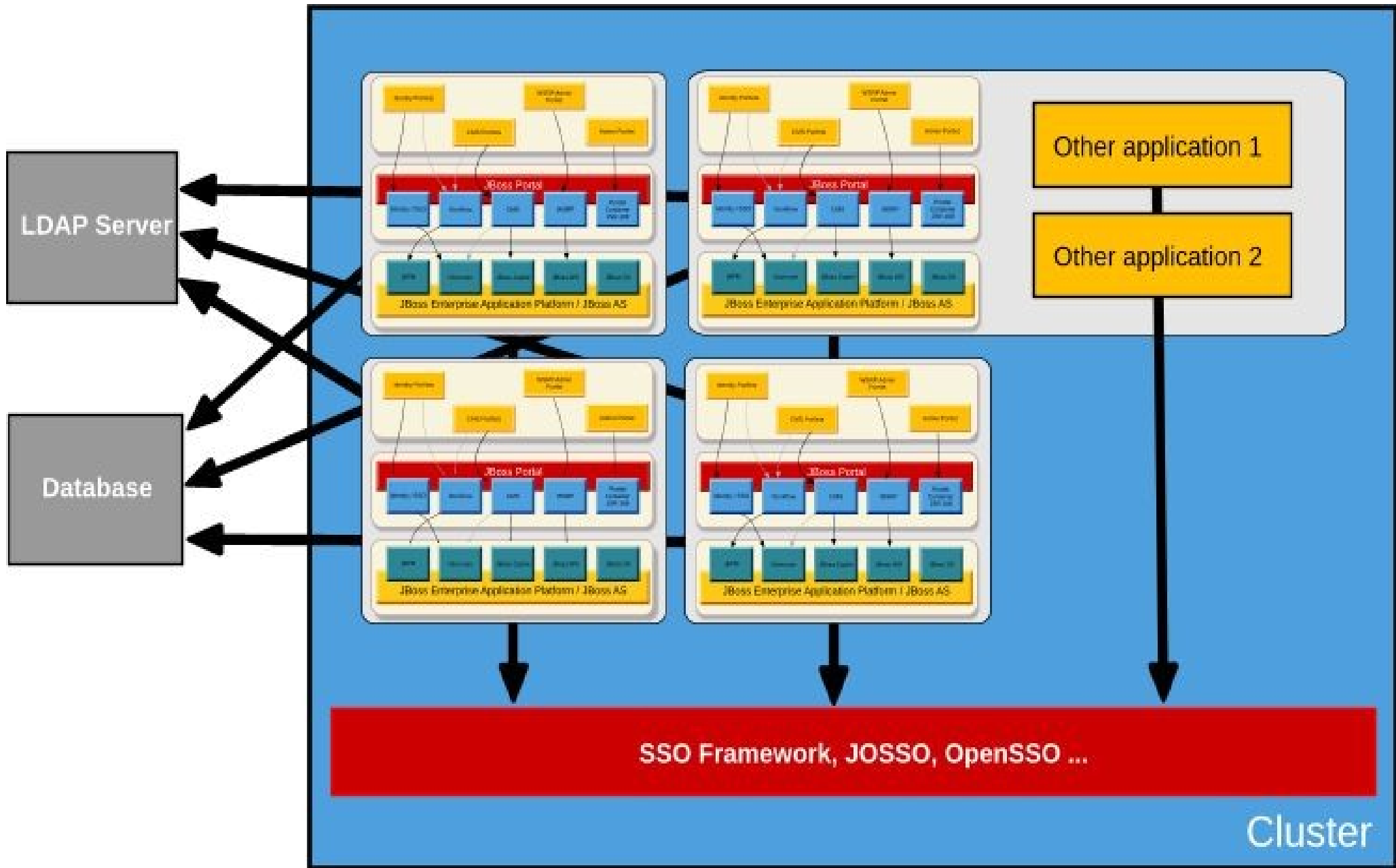
- Business process
- Better flexibility

JBoss Web Services

- WSRP
- REST

...because it runs in JBoss Application Server





Identity Server integration

A set of interfaces to integrate with any identity server:

- OpenLDAP
- Red Hat Directory Server
- OpenDS
- Sun Directory Server
- Microsoft Active Directory
- others

...it's all about integration!

Single Sign-On integration

Several applications but a single login challenge to the user

- Single sign-on (SSO) is a method of access control that enables a user to log in once and gain access to the resources of multiple software systems without being prompted to log in again. Single sign-off is the reverse process whereby a single action of signing out terminates access to multiple software systems.

Provided set of interfaces to integrate with any SSO framework

- CAS
- JOSSO
- Open SSO
- others



JBoss Portal

as a community driven OSS



Community

- a large base of users
- active forums
- multiple environments, OS, database... supported
- user input
- early feedback
- helps OSS to anticipate needs before final releases
- 10,000 downloads a month



Strong points given by users: Why use JBoss Portal?

- Modularity
- Seamless integration
- Reduced costs
- Scalable architecture
- Professional support quality

Related projects

JBoss Wiki

- Wiki portlet

JBoss Forums

- Forums portlet
- More portlets on portletswap.com (being revamped)
- Increasing number of portlets available globally



JBoss Portal as a product

- Open Source with LGPL license – use freely, business friendly licence
- Backed up to 24x7 by “Support from the Source”
- Many JBoss certified partners (HP, Cap Gemini, Alfresco, Atos Origin, Unisys...) – solution you can trust!

Future plans

- **Server agnosticism** – run everywhere!
- **Federated search** – is the simultaneous search of multiple online databases or web resources and is an emerging feature of automated, web-based library and information retrieval systems. It is also often referred to as a portal or a federated search engine.
- **WSRP 2.0** – Web Services for Remote Portlets (WSRP) is an OASIS-approved network protocol standard designed for communications with remote portlets.
- **New presentation framework**
- **Improved content framework**
- **Our needs!**

Standards/OSS in enterprise in general

What are standards?

- uniform engineering or technical criteria, methods, processes and practices that *everyone* follows

Why use them?

- easy to start using
- easy to stop using
- easy to migrate to different solution provider
- shareable components

As a developer?

- You are getting the entire budget because you don't have to pay for the license!



JBoss Portal

live demo



“Installation”

JBossAS/Portal Bundle

- Zero Installation Required (this is Java life!)
- Get supported Java (JDK 4, JDK 5)
- Start Server (`./run.sh -c default`)
- Point your browser to <http://localhost:8080/portal>

Standalone JBoss Service Archive (SAR)

- `jboss-portal.sar` – Core framework code
- `portal-core.war` – stores layouts/themes
- `portal-server.war` – portal server root context



Database to use

- Get your favorite (RDBMS) database
- Get JDBC driver (copy to `./server/default/lib`)
- Hibernate DDL/DML executed on initial startup
- HSQL embedded (this is not for production!)



Q&A

