

4 2-18:09

$$\Omega = A \cup A^c \quad A \cap A^c = \emptyset$$

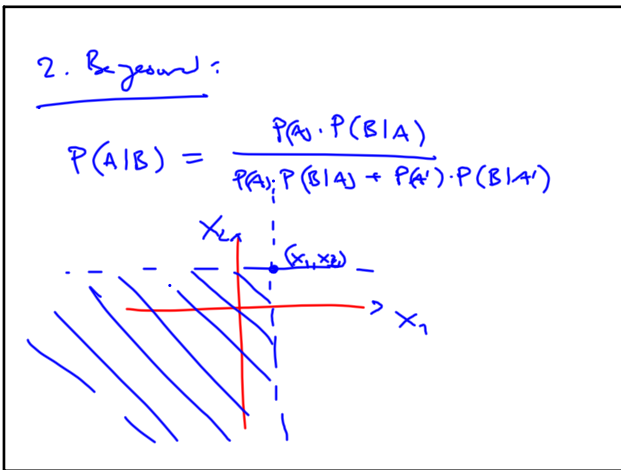
$$P(\Omega) = 1 = P(A) + P(A^c)$$

$\geq 0 \quad \geq 0$

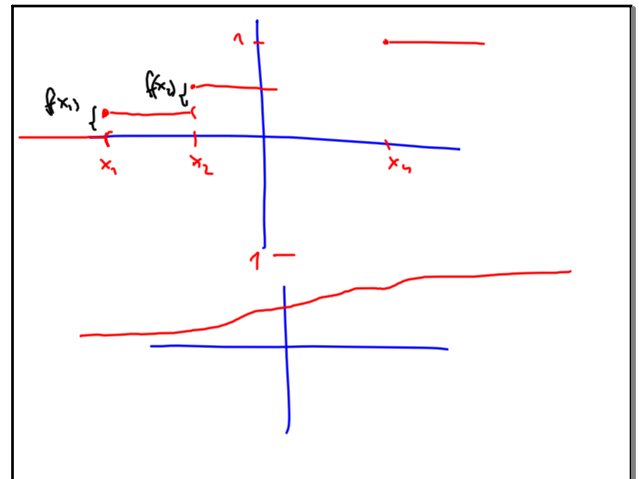
new rule:  $P(A \cap H) = P(A) \cdot P(H)$

$$P(H|A) = \frac{P(A) \cdot P(H)}{P(H)} = P(A)$$

4 2-19:11



4 2-19:26



4 2-19:38