

# PA160: Net-Centric Computing II.

## Specification and Verification of Network Protocols

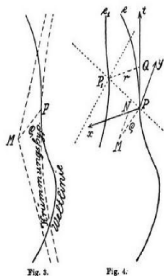
Vojtěch Řehák

Faculty of Informatics, Masaryk University

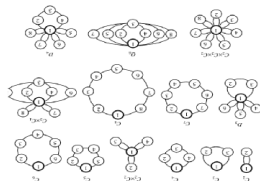
Spring 2013

# Theory

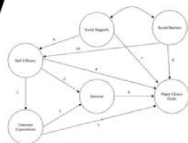
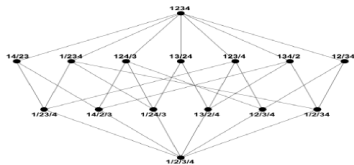
# Theory Definition and Usage



$$\mathcal{L} = m \sqrt{g_{\mu\nu} \frac{dx^\mu}{d\tau} \frac{dx^\nu}{d\tau}}$$

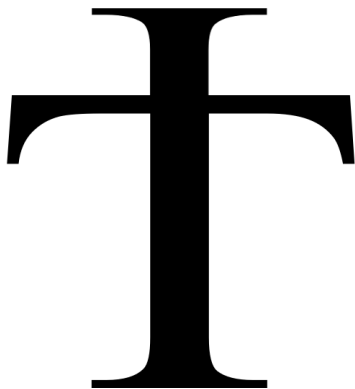


# Theory

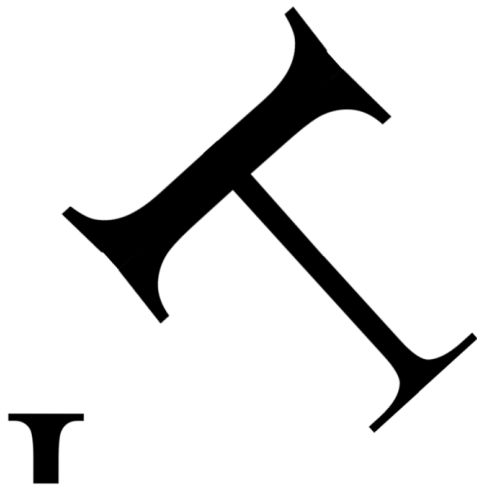


$$\int_a^b f(x) dx = F(b) - F(a)$$

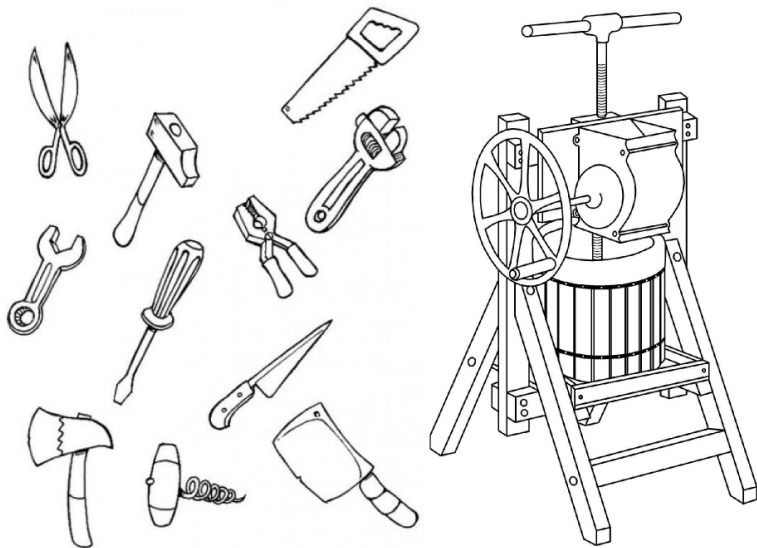
**T**



# Theory Definition and Usage



# Theory Definition and Usage



## Theoretical Results as Tools for Users



# Formal Models - what are they good for

The basic concept is a *model* of system (i.e. the object we work with).


## **thought handling**

- individual approach (intra-brain) - to grasp it
- documentation (inter-brain) - to pass it on


## **automatic/computer processing** (comparing model to specification)


- testing
- simulation
- symbolic execution
- static analysis
- model checking
- equivalence checking
- theorem proving

## natural language **vs.** formal language


freedom in writing 

human resources 


 restrictions in writing


 automatic methods

## natural language **vs.** formal language

freedom in writing 


human resources 

 restrictions in writing


 automatic methods


nothing  $\leq$  text  $\leq$  structured text  $\leq$  text with formal “pictures”  $\leq$   
formal description with informal comments  $\leq$  complete formal description

## natural language **vs.** formal language

freedom in writing 

human resources 

 restrictions in writing

 automatic methods


nothing  $\leq$  text  $\leq$  structured text  $\leq$  text with formal “pictures”  $\leq$   
formal description with informal comments  $\leq$  complete formal description


**Goal:** Find an appropriate level of abstraction and keep it.

## natural language **vs.** formal language

freedom in writing 

human resources 

 restrictions in writing

 automatic methods

nothing  $\leq$  text  $\leq$  structured text  $\leq$  text with formal “pictures”  $\leq$   
formal description with informal comments  $\leq$  complete formal description

**Goal:** Find an appropriate level of abstraction and keep it.

“What will be the model used for?”

## Map - Abstraction Example



Find Pardubice or directions from Brno to Liberec.

source:www.mapy.cz

## Map - Abstraction Example



Find Pardubice or directions from Brno to Liberec.

source:www.mapy.cz

“Model has to suit its **purpose!**”

Only relevant information are presented; no more, no less.



# Outline

Models we will talk about:

- Message Sequence Charts (MSC)
- Specification and Description Language (SDL)
- Petri nets
- Queueing theory

What they can be used for?

- modelling
- specification
- analysis
- simulation
- testing
- partial implementation

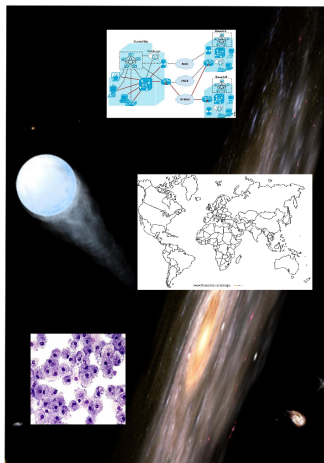
“What is the problem of distributed systems?”

# Distributed Systems – Key characteristics (Déjà vu)

## *Key Characteristics of Distributed Systems:*

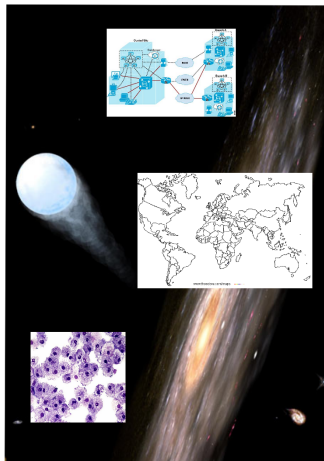
- **Autonomy** – there are several autonomous computational entities, each of which has its own local memory
- **Heterogeneity** – the entities may differ in many ways
  - computer HW (different data types' representation), network interconnection, operating systems (different APIs), programming languages (different data structures), implementations by different developers, etc.
- **Concurrency** – concurrent (distributed) program execution and resource access
- **No global clock** – programs (distributed components) coordinate their actions by exchanging messages
  - message communication can be affected by delays, can suffer from variety of failures, and is vulnerable to security attacks
- **Independent failures** – each component of the system can fail independently, leaving the others still running (and possibly not informed about the failure)
  - How to know/differ the states when a network has failed or became unusually slow?
  - How to know if a remote server crashed immediately?

# Distributed Systems



World is distributed

# Distributed Systems



World is distributed



Human way of thinking is sequential

# SDL

Specification Description  
Language

ITU-T Z.100

# MSC

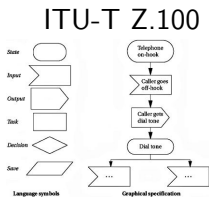
Message Sequence  
Chart

ITU-T Z.120

# Distributed vs. Local

## SDL

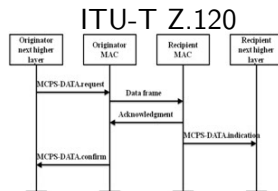
Specification Description  
Language



models of components

## MSC

Message Sequence  
Chart



communication model

# Message Sequence Chart (MSC)

## Message Sequence Chart (MSC)



# Message Sequence Chart (MSC)

international standard of ITU-T, Z.120

- 1993 - first version of Z.120 recommendation
- ...
- 2011 - current version of Z.120 recommendation
- all documents of the current version:
  - Z.120 - Message Sequence Chart (MSC)
  - Z.120 Annex B - Formal semantics of message sequence charts
  - Z.121 - Specification and Description Language (SDL) data binding to Message Sequence Charts (MSC)

# Message Sequence Chart (MSC)

international standard of ITU-T, Z.120

- 1993 - first version of Z.120 recommendation
- ...
- 2011 - current version of Z.120 recommendation
- all documents of the current version:
  - Z.120 - Message Sequence Chart (MSC)
  - Z.120 Annex B - Formal semantics of message sequence charts
  - Z.121 - Specification and Description Language (SDL) data binding to Message Sequence Charts (MSC)

It formally defines both textual and graphical form.

MSC is a similar concept to UML Sequence Charts.

# Message Sequence Chart (MSC)

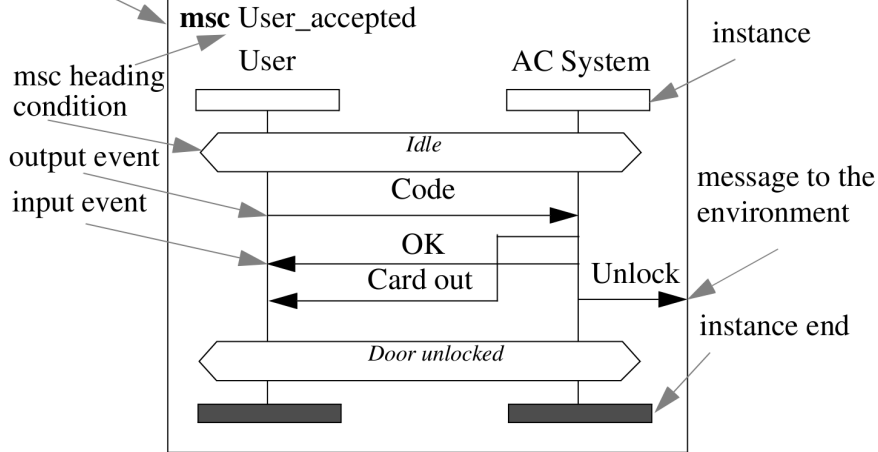
A **trace language** for the specification and description of the **communication behaviour** by means of **message exchange**.

Describes

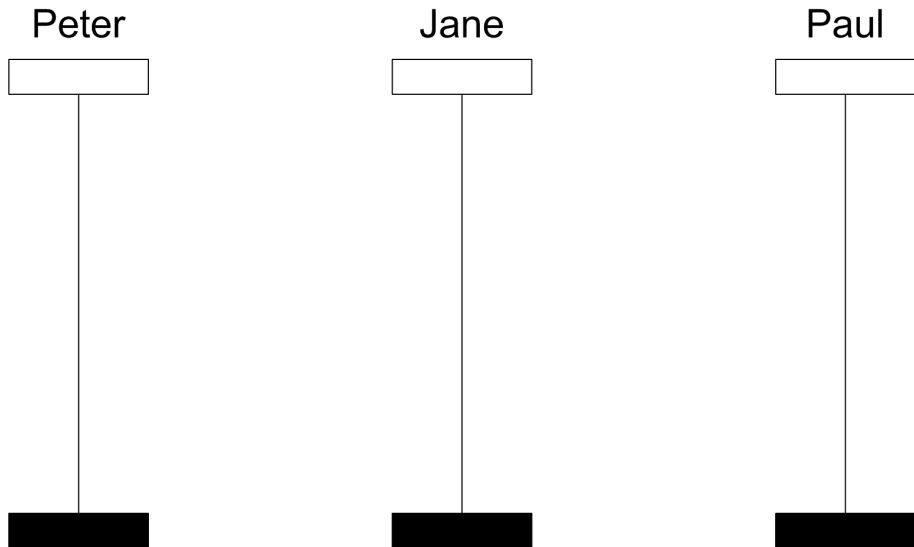
- communicating processes,
- communication traces,
- message order,
- time information (timeouts, constraints),
- high-level form for set of traces.

# Message Sequence Chart (MSC)

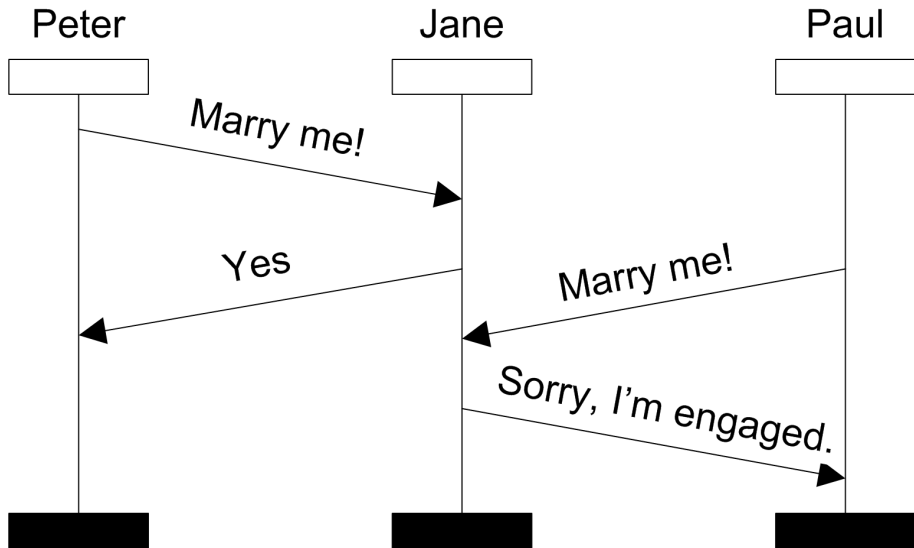
msc diagram



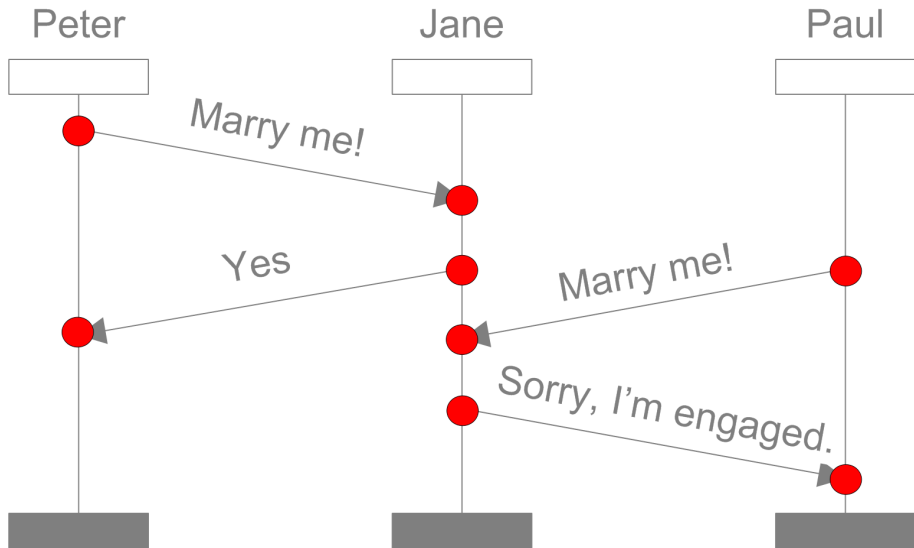
## Message Sequence Chart (MSC) - semantics



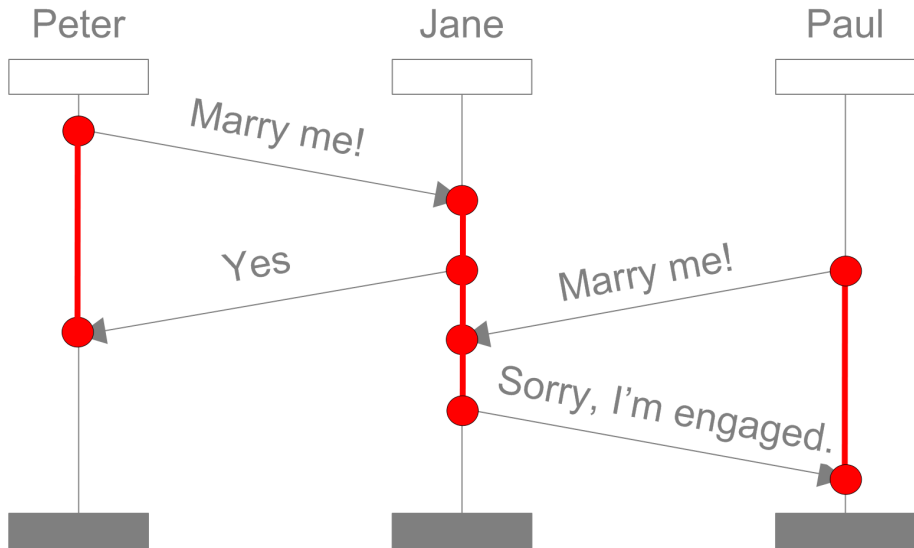
## Message Sequence Chart (MSC) - semantics



# Message Sequence Chart (MSC) - semantics

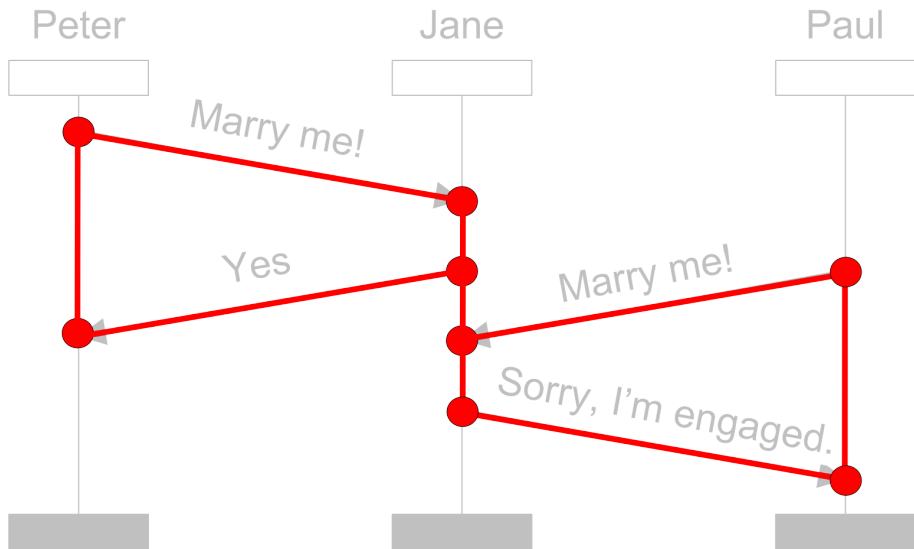


# Message Sequence Chart (MSC) - semantics

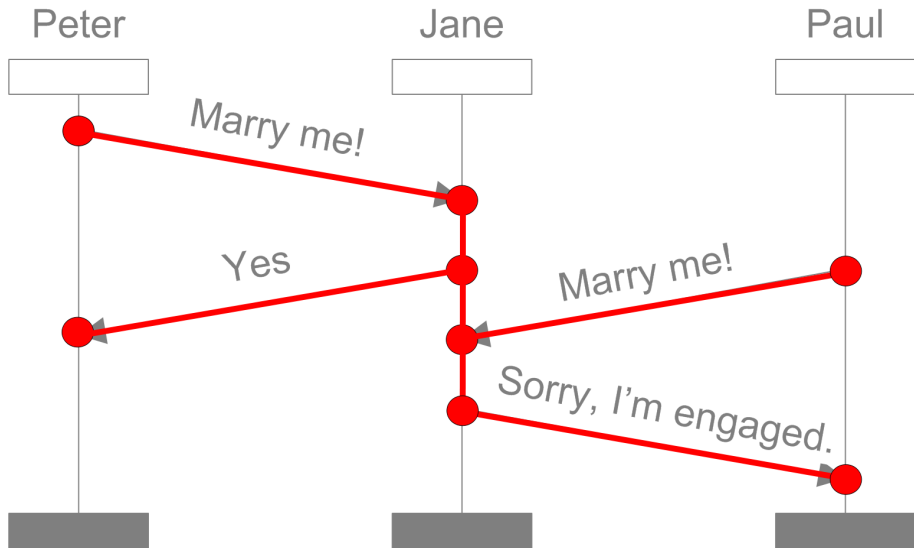




## MSC - Visual Order



## MSC - Visual Order - Hasse Diagram



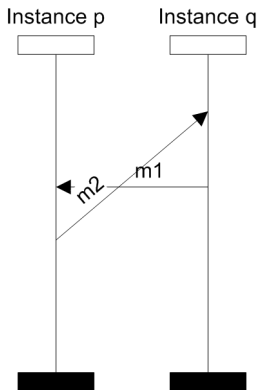
**What is an unwanted behaviour/property?**

## **What is an unwanted behaviour/property?**

Fundamental problems in the specified model, e.g. an implementation of the model does not exist in the given environment.

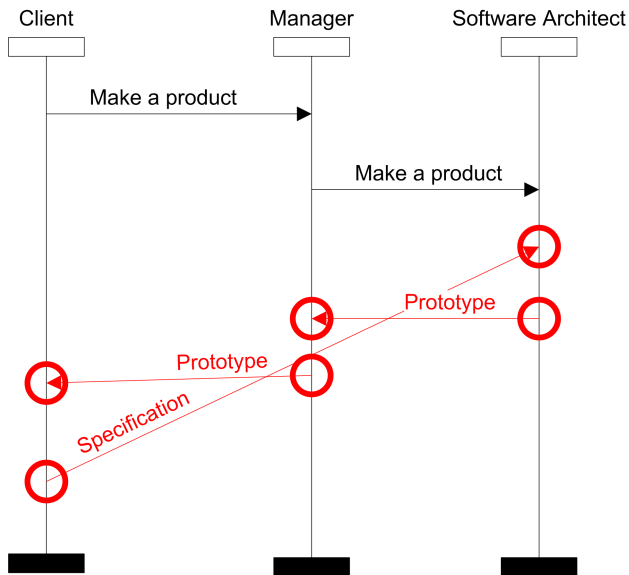
## Acyclic/Cyclic property

cyclic dependency among events



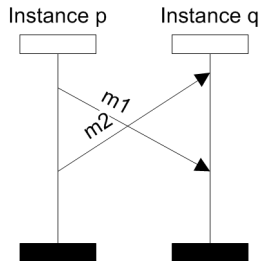
unrealizable in any environment

# Acyclic/Cyclic property



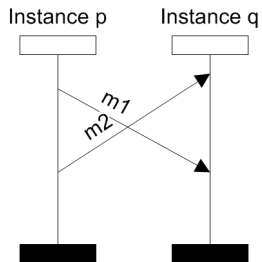
# FIFO/non-FIFO property

overleaping messages



## FIFO/non-FIFO property

overleaping messages

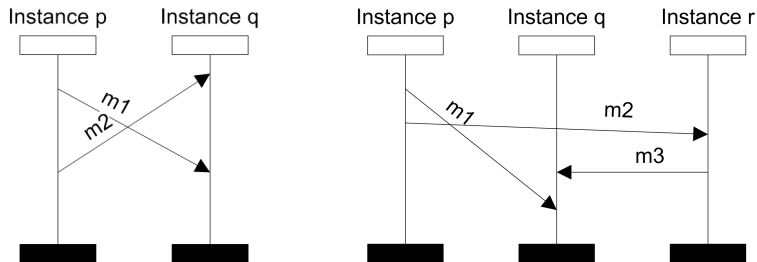


unrealizable in an environment preserving message order



# FIFO/non-FIFO property

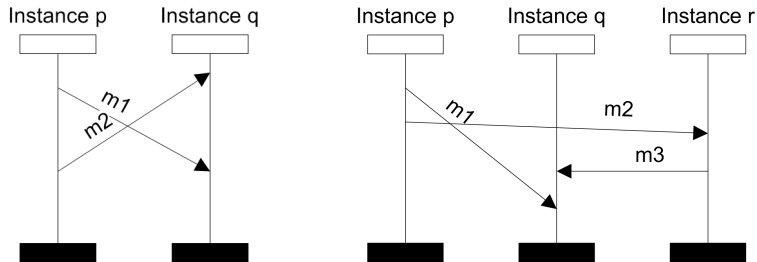
overleaping messages



unrealizable in an environment preserving message order

# FIFO/non-FIFO property

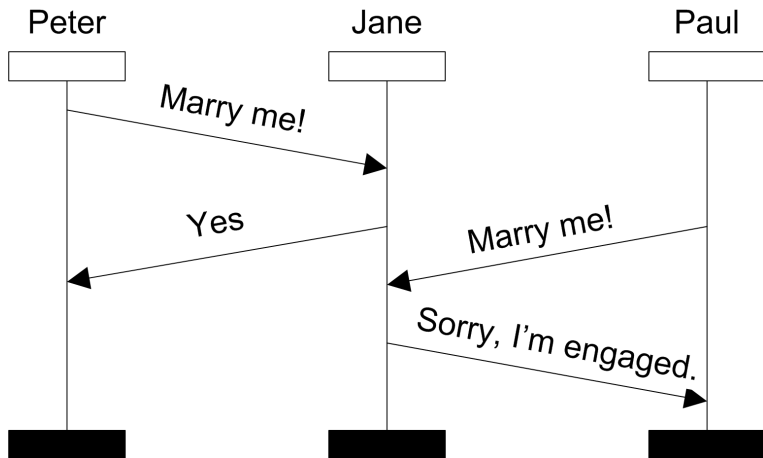
overleaping messages



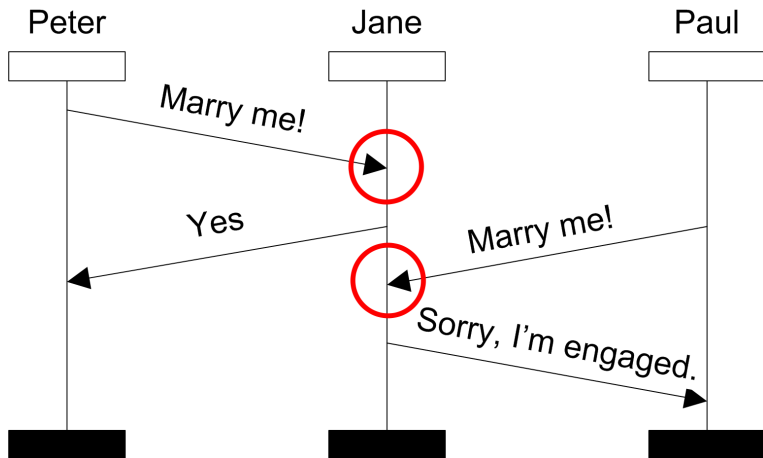
unrealizable in an environment preserving message order

realizable in an environment with P2P channels but unrealizable in case of one global channel

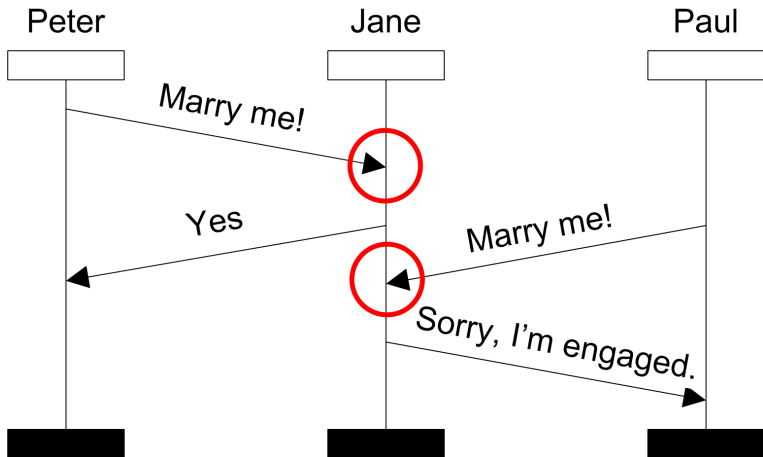
## Race Condition



## Race Condition



## Race Condition



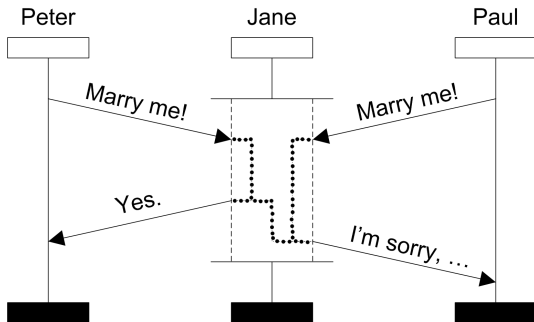
Informally, **race** is when some receive event can come earlier.

## Solution #1 - Coregion Construction

Let us demonstrate that some events are not ordered.

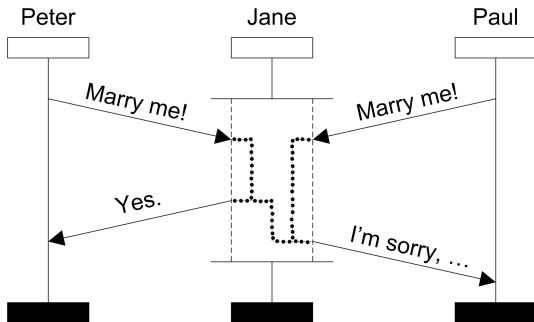
## Solution #1 - Coregion Construction

Let us demonstrate that some events are not ordered.



## Solution #1 - Coregion Construction

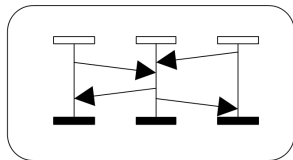
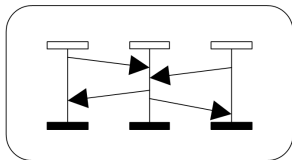
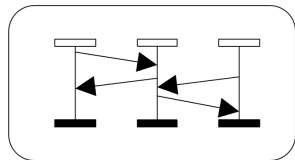
Let us demonstrate that some events are not ordered.



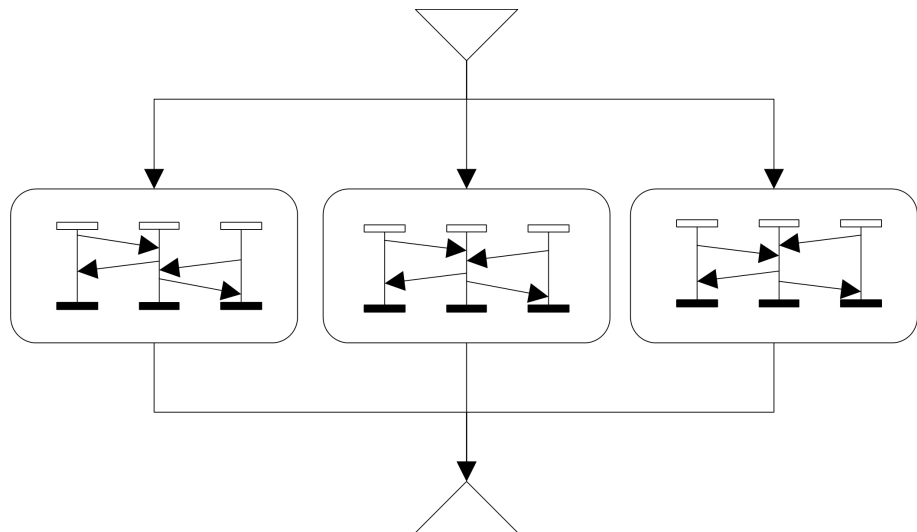
Events in a *coregion* are not order;  
except for the event related by *general ordering*.



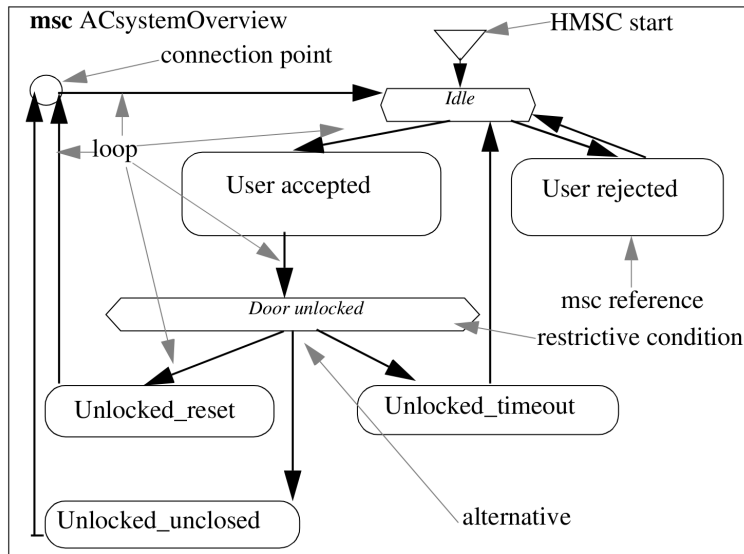
## Solution #2 - List/set of all possibilities



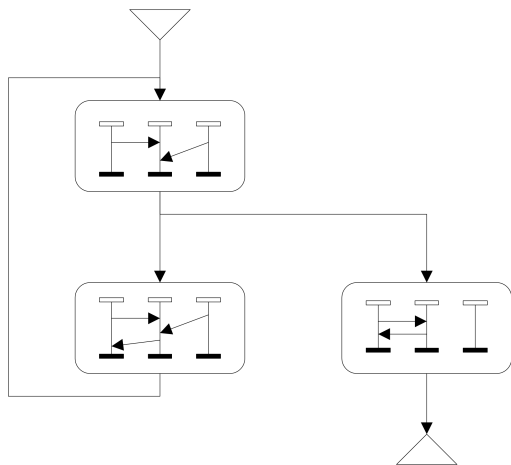
# High-Level MSC (HMSC)



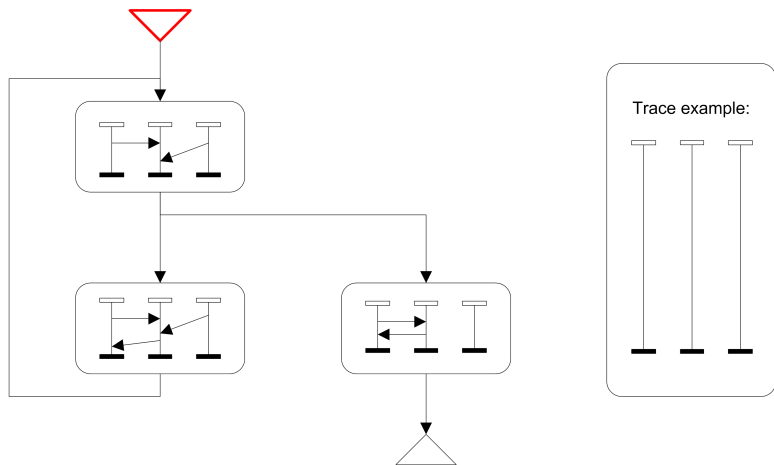
# High-Level MSC (HMSC) - ITU-T Z.120



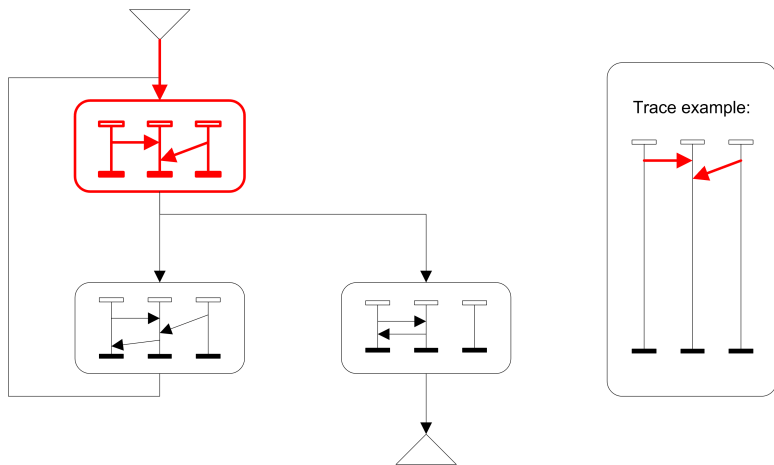
# High-Level MSC (HMSC) - ITU-T Z.120



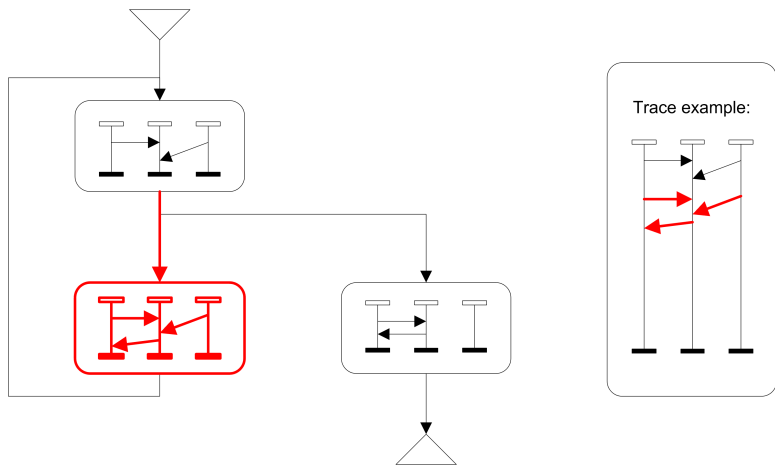
# High-Level MSC (HMSC) - ITU-T Z.120



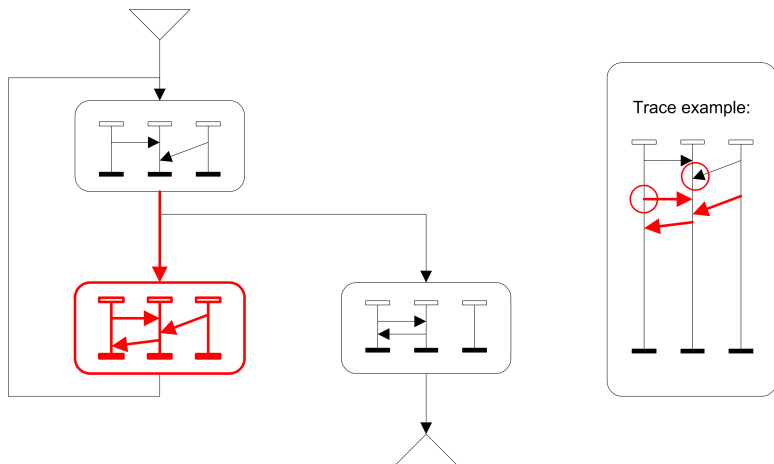
# High-Level MSC (HMSC) - ITU-T Z.120



# High-Level MSC (HMSC) - ITU-T Z.120



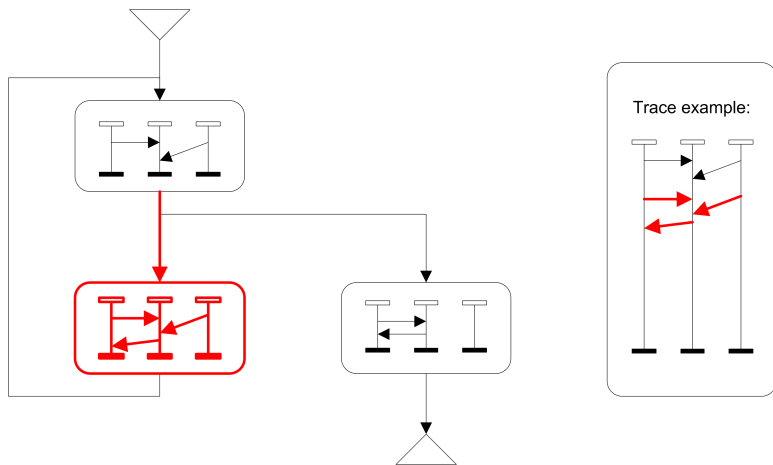
# High-Level MSC (HMSC) - ITU-T Z.120



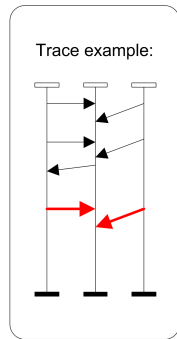
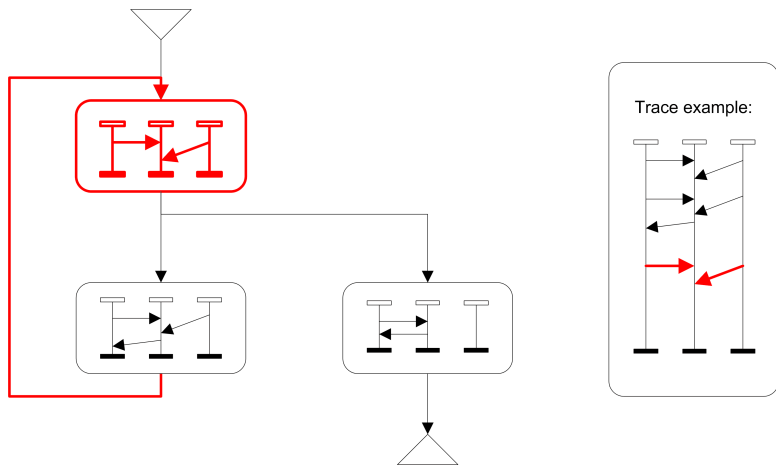
these events are not ordered!



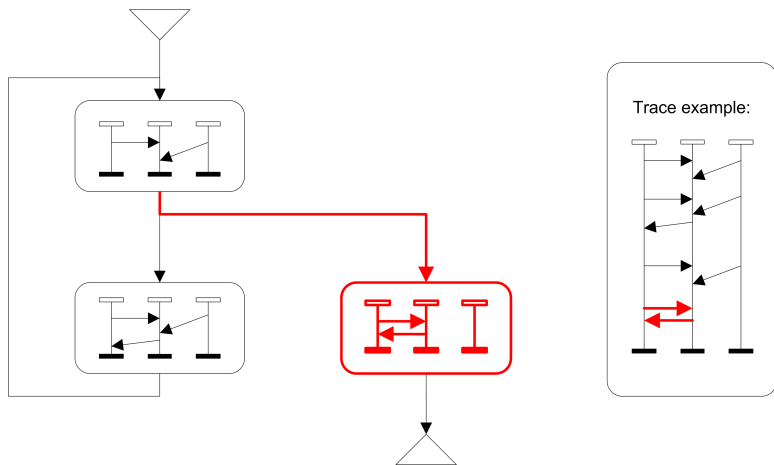
# High-Level MSC (HMSC) - ITU-T Z.120



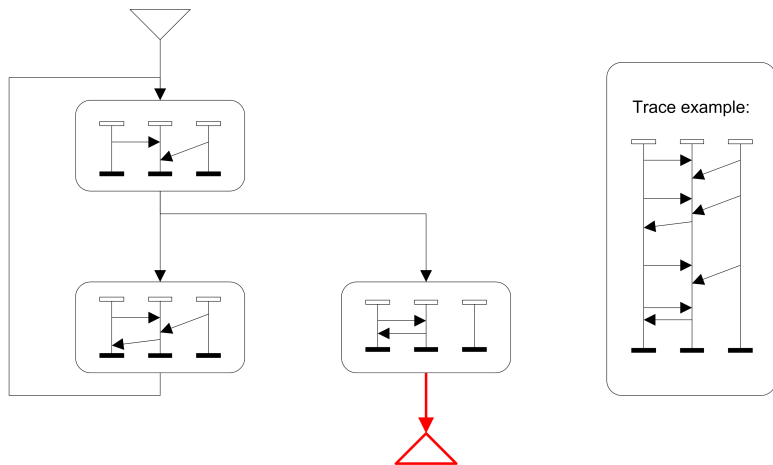
# High-Level MSC (HMSC) - ITU-T Z.120



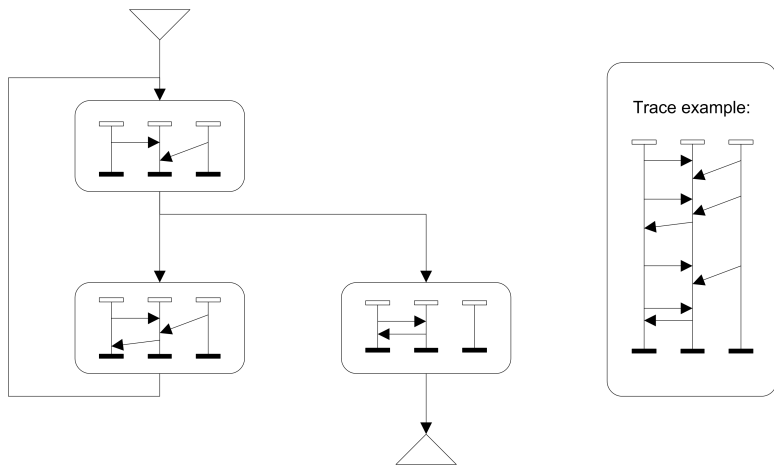
# High-Level MSC (HMSC) - ITU-T Z.120



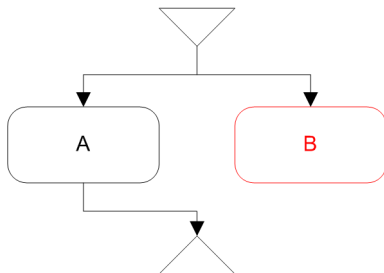
# High-Level MSC (HMSC) - ITU-T Z.120



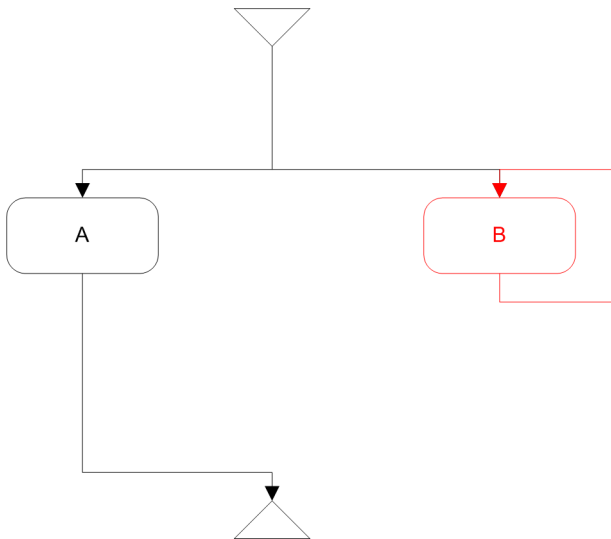
# High-Level MSC (HMSC) - ITU-T Z.120



# Deadlock Property



# Livelock Property



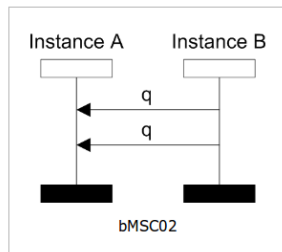
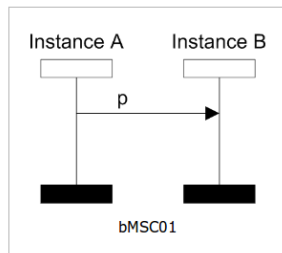
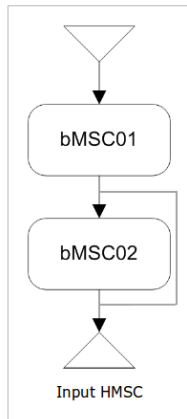
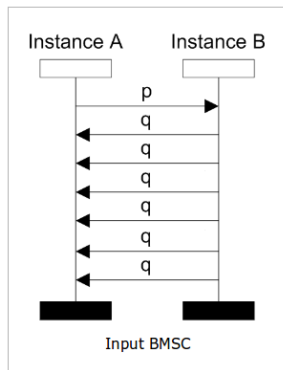
# Membership

Is a given MSC included in a given HMSC?

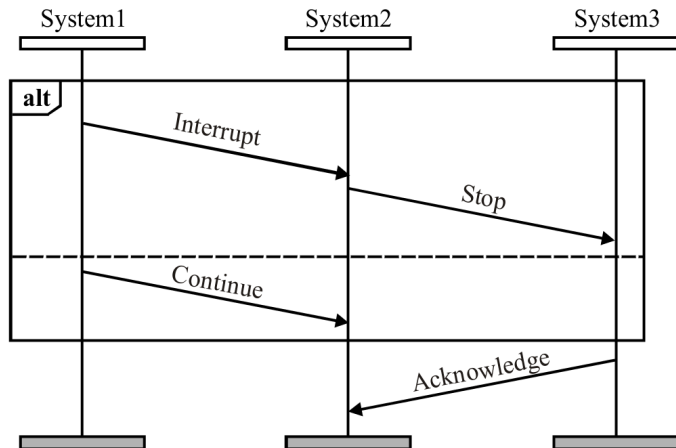


# Membership

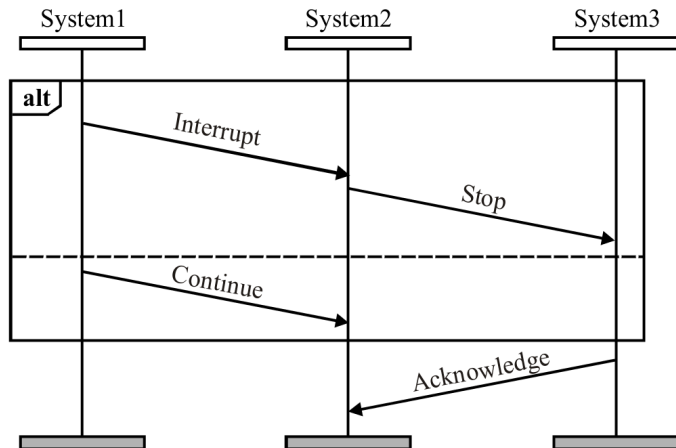
Is a given MSC included in a given HMSC?



# Inline Expressions

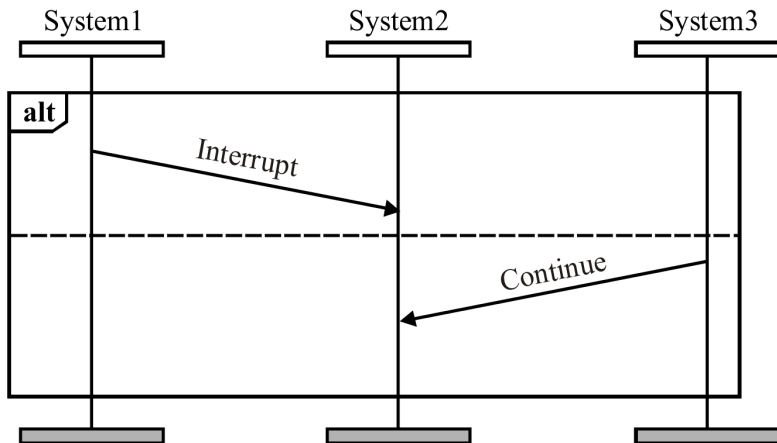


## Inline Expressions

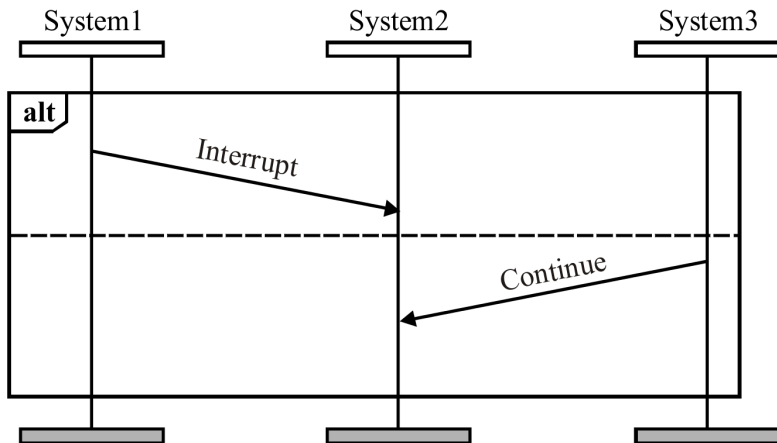


Other inline expression types: **opt**, **loop** $\langle m, n \rangle$ , **exc**, **seq**, **par**.

## Non-local Choice

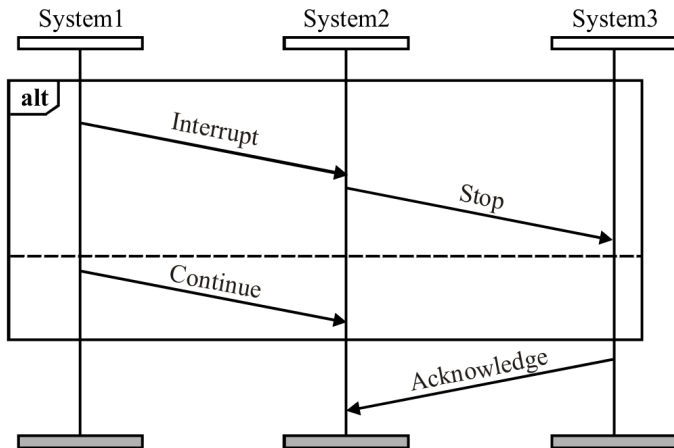


## Non-local Choice

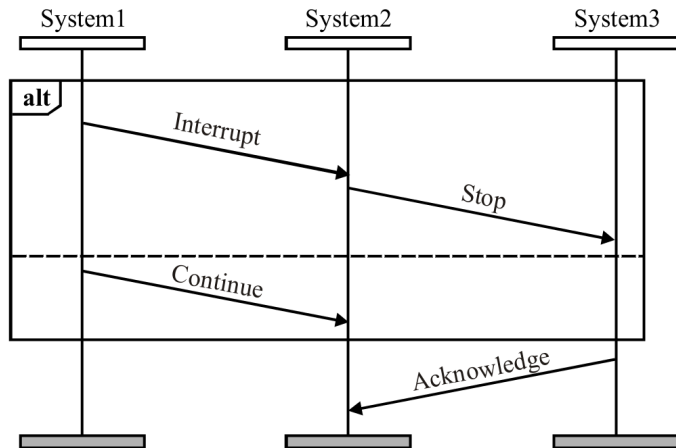


System3 does not know which alternative has been chosen.

## Non-local Choice



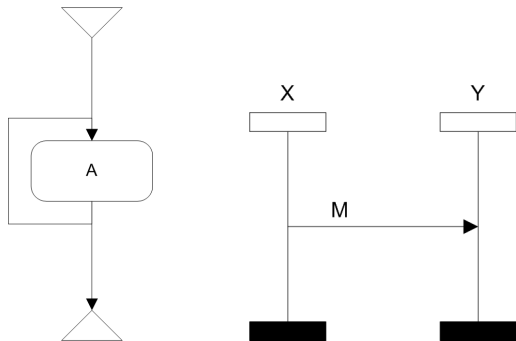
## Non-local Choice



System3 does not know which alternative has been chosen.

# Universal Boundedness

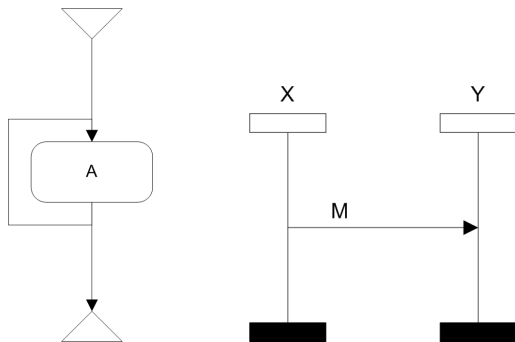
What is the size of input buffer of  $Y$  that will never overflow?





# Universal Boundedness

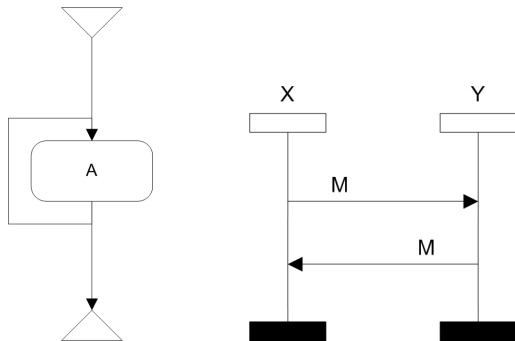
What is the size of input buffer of  $Y$  that will never overflow?



Every finite input buffer of  $Y$  can overflow.

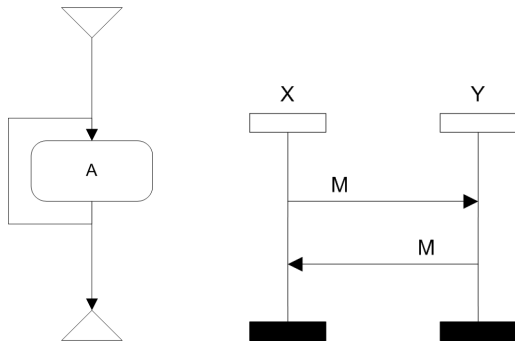
# Universal Boundedness

What is the size of input buffer of  $Y$  that will never overflow?



# Universal Boundedness

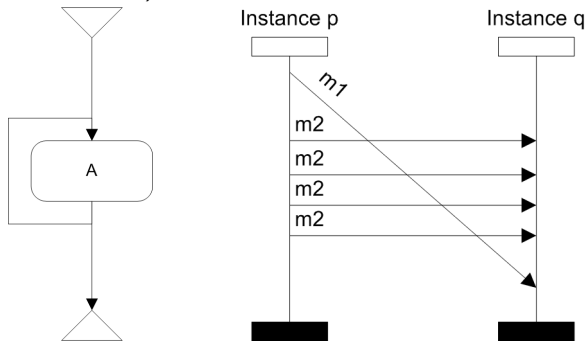
What is the size of input buffer of  $Y$  that will never overflow?



Buffers of size 1 will never overflow.

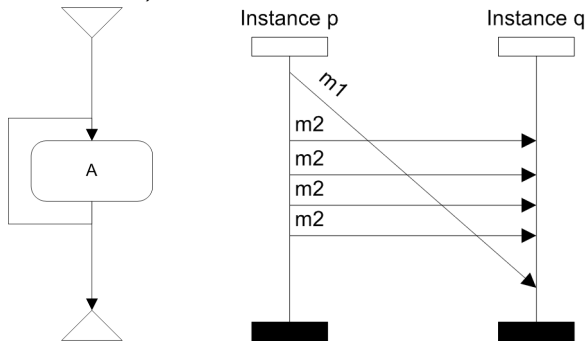
# Existential Boundedness

The system deadlocks in case of FIFO channels (and FIFO buffers).  
What is the size of non-FIFO buffer needed to avoid deadlock (in case of FIFO channels)?



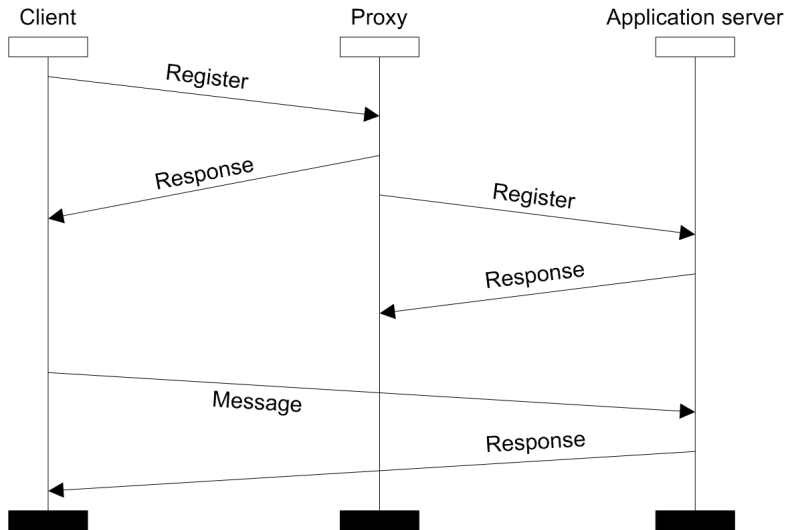
## Existential Boundedness

The system deadlocks in case of FIFO channels (and FIFO buffers).  
What is the size of non-FIFO buffer needed to avoid deadlock (in case of FIFO channels)?

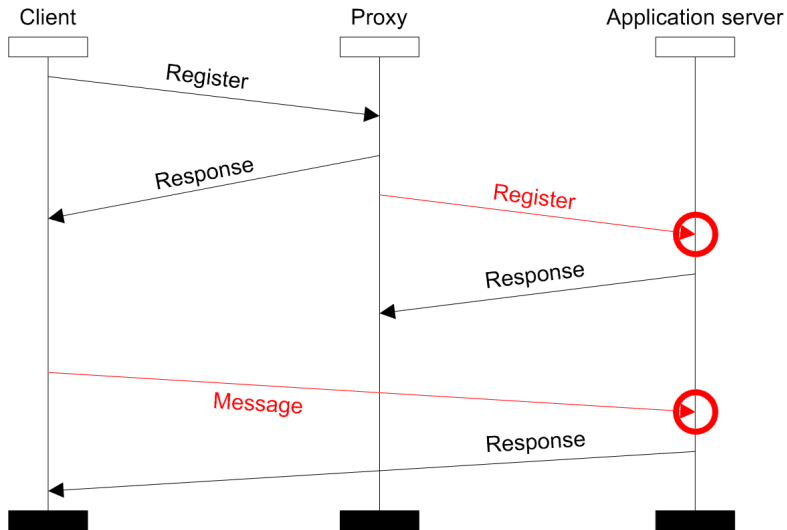


Buffer of size 2 suffices to avoid deadlock.  
Or one buffer for each message label (type).

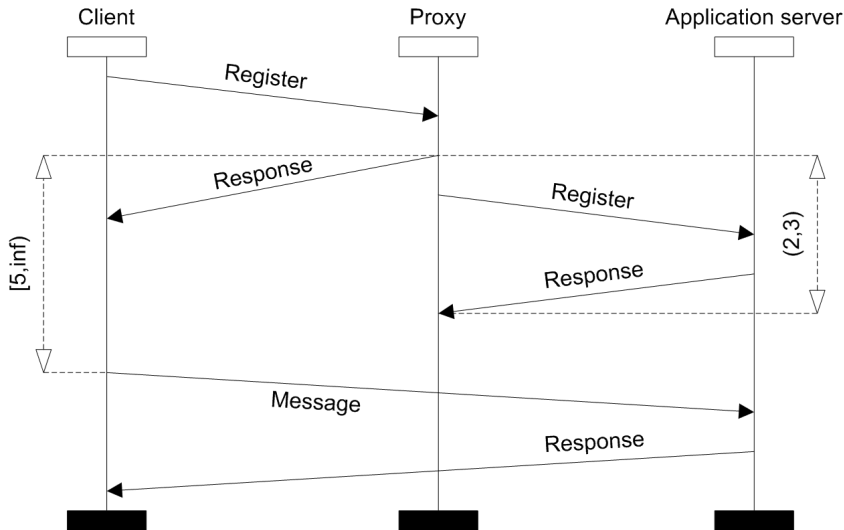
## Race Condition - Solution #3 - Time Constraints



# Race Condition - Solution #3 - Time Constraints



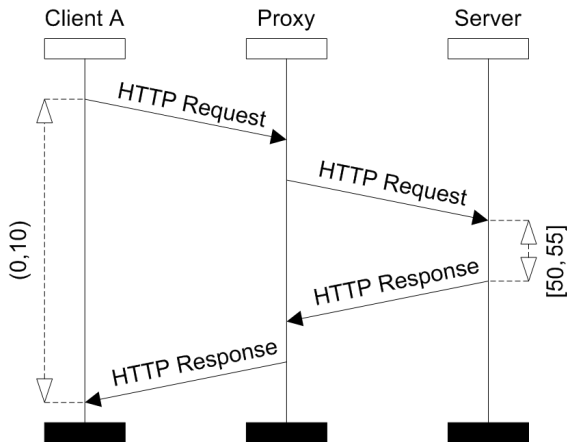
## Race Condition - Solution #3 - Time Constraints





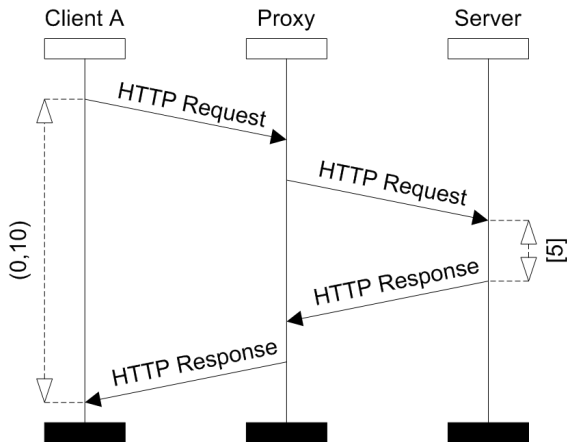
# Time Consistency

Are the given time conditions consistent?



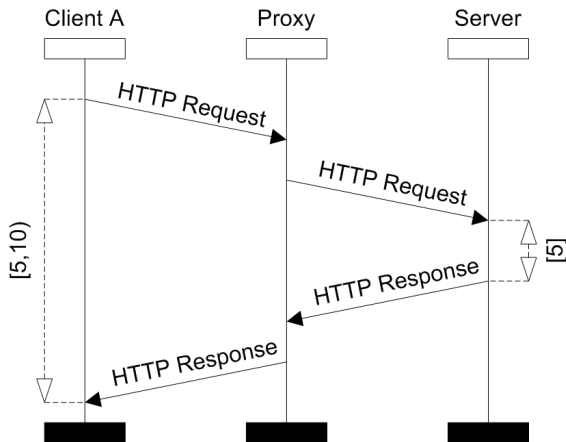
# Time Tightening

Some time conditions can be tightened.

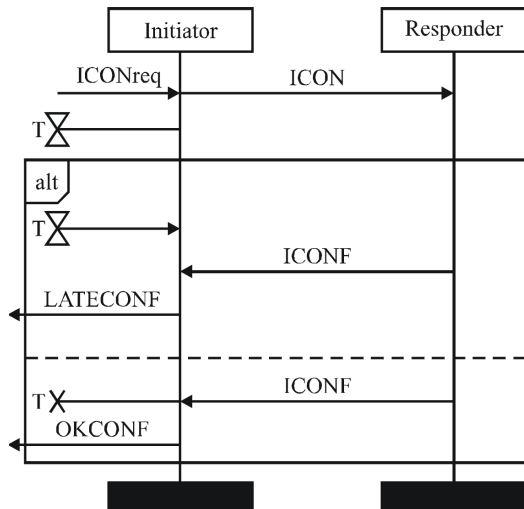


# Time Tightening

Some time conditions can be tightened.



# Timers



## Basic MSC

- instances
- messages
- send events
- receive events
- conditions
- coregions
- general ordering
- inline expressions
- time constraints
- timers

## High-level MSC (HMSC)

- start node
- end node
- reference nodes
- connection points
- lines
- conditions
- time constraints

# MSC - Properties

- Acyclic property
- FIFO property
- Race Condition
  
- Deadlock
- Livelock
- Membership
- Nonlocal Choice
- Universal Boundedness
- Existential Boundedness
  
- Time Race Condition
- Time Consistency
- Tighten Time

## What MSC is good for?

Both **human** and computer readable formalizm for:

- basic behaviour demonstration (use cases),
- high level system behaviour description,
- test case specification, and
- (test) log visualization.

## What MSC is good for?

Both **human** and computer readable formalizm for:

- basic behaviour demonstration (use cases),
- high level system behaviour description,
- test case specification, and
- (test) log visualization.

## What MSC is NOT good for?

detailed specification (before implementation), hierarchical structure of communicating entities, implementation details (primitives for communication, detailed data manipulation), etc.



# MSC - Tools

## Mesa

- academic tool
- local choice and time checkers

## MSCan

- academic tool
- only textual input
- some checkers

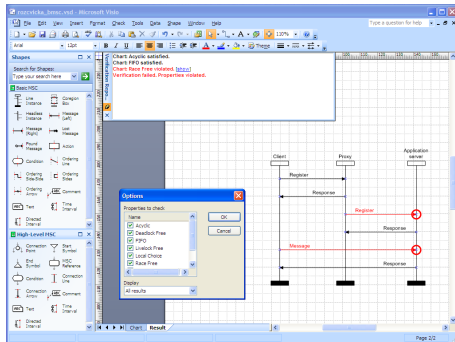
## IBM Rational, SanDriLa SDL, Cinderella SDL

## Sequence Chart Studio (SCStudio)

- MS Visio addon
- drawing, import, export
- checkers for all the mentioned properties

# Sequence Chart Studio

MSC drawing and verification tool developed at FI MU.

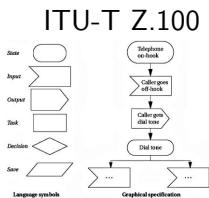


<http://scstudio.sourceforge.net>

# Distributed vs. Local

## SDL

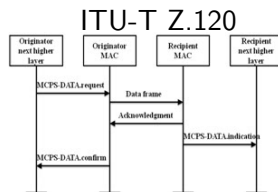
Specification Description  
Language



models of components

## MSC

Message Sequence  
Chart



communication model

# Specification Description Language (SDL)

## Specification Description Language (SDL)

# Specification Description Language (SDL)

international standard of ITU-T, Z.100

- 1972 - Establishment of a working group for SDL
- 1976 - first version of Z.100 recommendation
- ...
- 12/2011 - current version of Z.100 recommendation
- all documents of the current version:
  - Z.100 - Specification and Description Language (SDL)
  - Z.100 Supplement 1 - SDL+ methodology: Use of MSC and SDL
  - Z.Imp100 - SDL implementer's guide
  - Z.101 - SDL - Basic SDL-2010
  - Z.102 - SDL - Comprehensive SDL-2010
  - Z.103 - SDL - Shorthand notation and annotation in SDL-2010
  - Z.104 - SDL - Data and action language in SDL-2010
  - Z.105 - SDL - SDL-2010 combined with ASN.1 modules
  - Z.106 - SDL - Common interchange format for SDL
  - Z.108 - SDL - Object-oriented data in SDL-2010
  - Z.109 - SDL - UML profile for SDL-2010

# SDL - Specification Description Language

An **object oriented** languages for specification of applications that are

- heterogeneous,
- distributed (concurrent),
- interactive (event-driven, discrete signals), and
- real-time dependent (with delays, timeouts).

Describes

- structure (distributed components of the system),
- behaviour (instructions within the components), and
- data

of distributed systems in **real-time** environments.

# SDL - representations

Three representations:

SDL/GR graphical representation (human readable)

SDL/PR textual phrase representation (machine readable)

SDL/CIF common interchange format (SDL/PR with graphical information)

# SDL - representations

Three representations:

SDL/GR graphical representation (human readable)

SDL/PR textual phrase representation (machine readable)

SDL/CIF common interchange format (SDL/PR with graphical information)

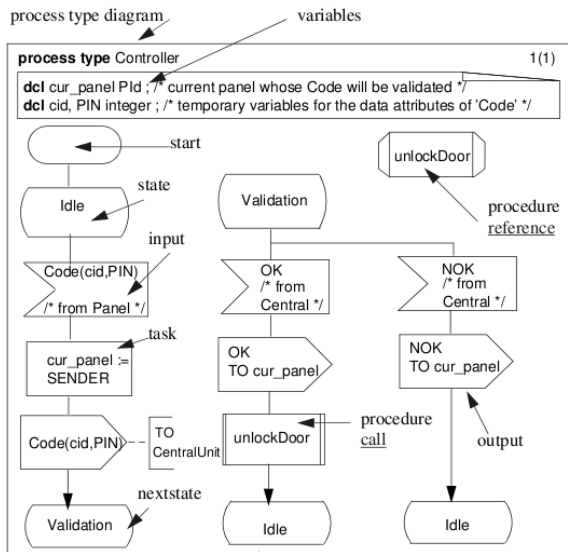
In what follows, we focus on the graphical representation (SDL-GR).

Basic SDL components

- system and blocks (structure)
- processes and procedures (behaviour)

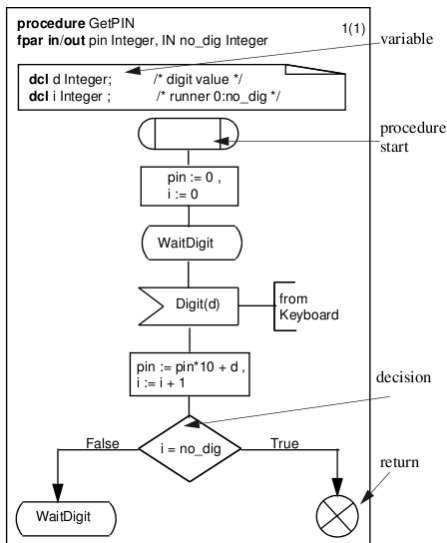


# SDL/GR - Process



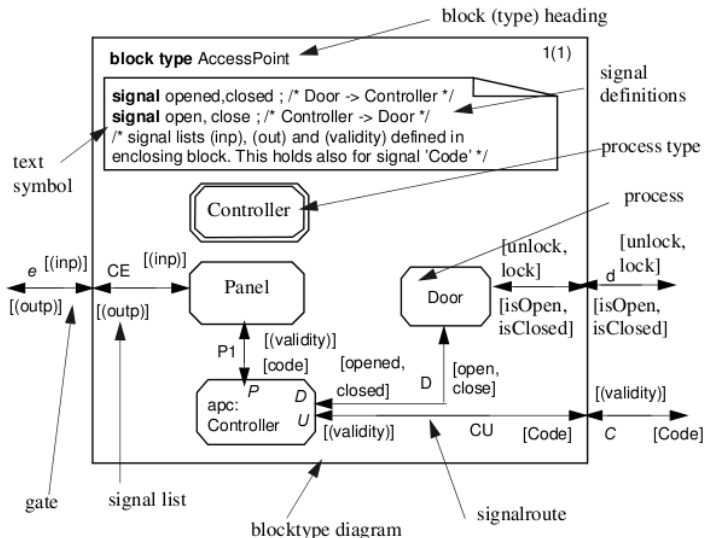
source: TIME Electronic Textbook v4.0

# SDL/GR - Procedure

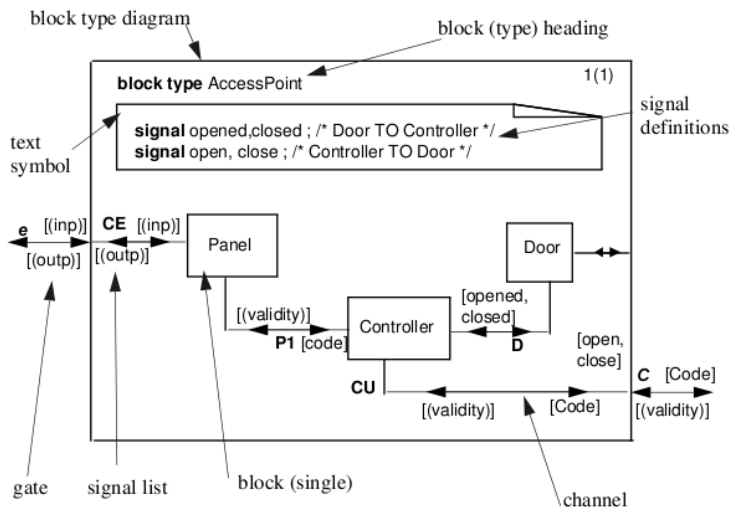


source: TImE Electronic Textbook v4.0

# SDL/GR - Block

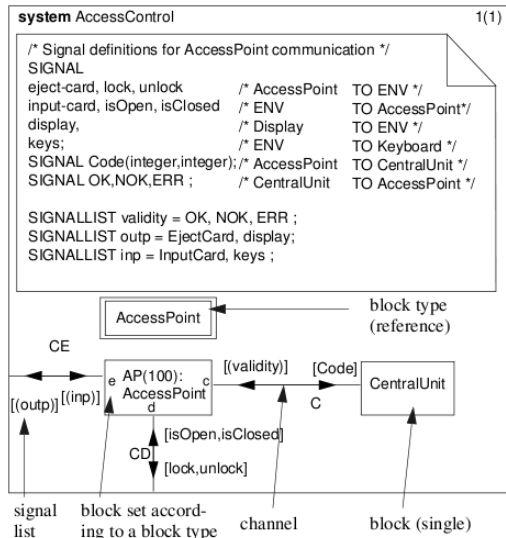


# SDL/GR - Block with block structure



source: TImE Electronic Textbook v4.0

# SDL/GR - System (the top most block)



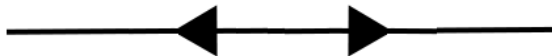
source: TImE Electronic Textbook v4.0

## SDL/GR - Channels

**Nondelaying channels** for “immediate” message delivery (e.g., between processes within a computer).



**Delaying channels** for “time consuming” message delivery (e.g., between dislocated blocks).



Channels can also be one-directional.

# Summary of SDL Basics

**System** - is the top most block surrounded by environment.

**Block** - consists of blocks or processes that are connected by channels.

- expresses the hierarchical structure of the system.
- its names are references to other objects.

**Process** - sends and receives messages.

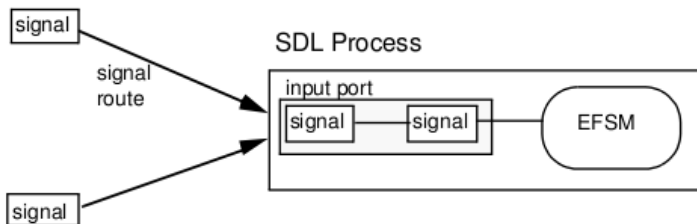
- stays in states.
- can call procedures.

**Procedure** - is a subroutine that can finish.

- does not return any value (only in variables or sent messages).

# Message Exchange - Operational Semantics

- one input buffer for a process
- FIFO behaviour
- no priority queues
- signal which is unspecified in the current state is **discarded**



source: TIME Electronic Textbook v4.0



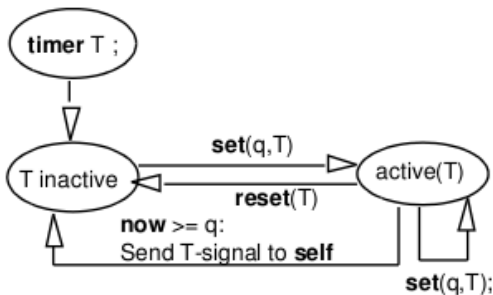


# Timer Construction

TIMER door\_timeout ;

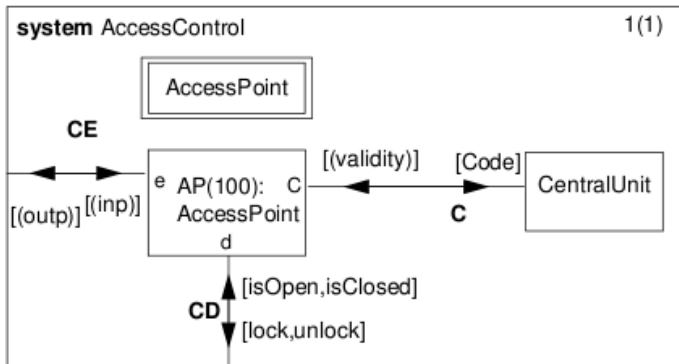
**set**  
(now +10,  
door\_timeout)

door\_timeout



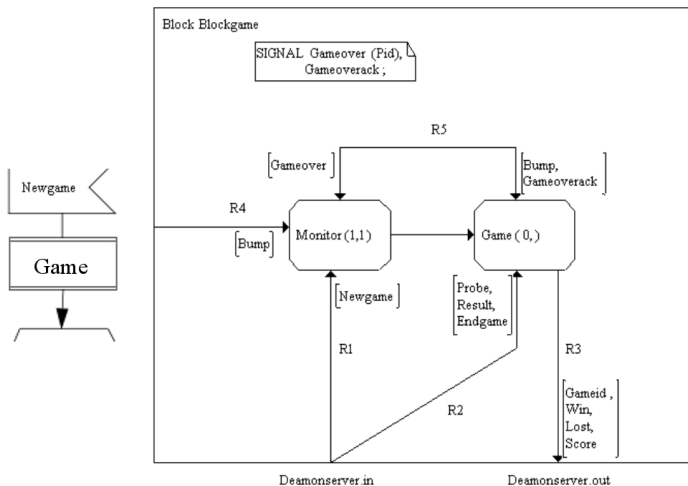
source: TIME Electronic Textbook v4.0

# Multiple Instances of a Block



source: TIme Electronic Textbook v4.0

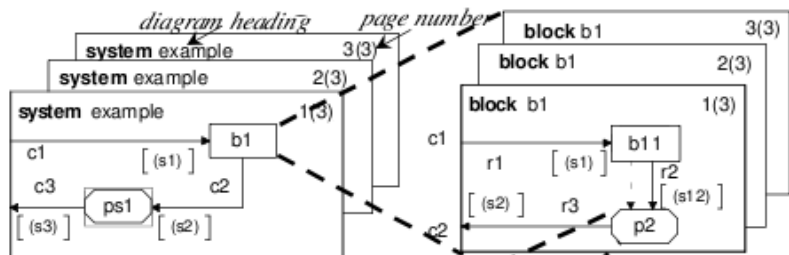
# Multiple Instances of a Process



## Additional SDL Constructs

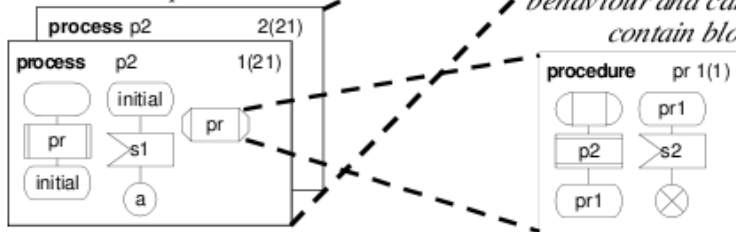
- **Asterisk save, asterisk state, and dash state**
- **Timer** construction
- **Multiple block instances** (no dynamic creation)
- **Multiple process instances** (with dynamic creation and limit)
  
- **Packages** collections of related types and definitions (library)
- **Subtypes**
- **Virtual processes**
- **Process type redefinition** and **finalization**
- **Inherited blocks**

# SDL - Overview



*Systems and blocks can contain blocks and/or processes.*

*Processes contain behaviour and cannot contain blocks.*



## What SDL is good for?

SDL is designed for unambiguous **specification** of requirements and **description** of implementation of the normative requirements of **telecommunication protocol** standards.

For computer based tools to improve the process of

- specification (create, maintain, and analyze), and
- implementation (automatic code generation).

## What SDL is good for?

SDL is designed for unambiguous **specification** of requirements and **description** of implementation of the normative requirements of **telecommunication protocol** standards.

For computer based tools to improve the process of

- specification (create, maintain, and analyze), and
- implementation (automatic code generation).

## What SDL is NOT good for?

high level system description (what the system serves for), demonstration of good or wrong behaviour, test trace specification, implementation details (primitives for communication, detailed data manipulation), etc.



## MSC and SDL in Workflow

- typical/optimal communication sequences (MSC)
- error sequences (MSC)
- optionally - full specification in (HMSC)
- distributed specification (SDL)

# MSC and SDL in Workflow

- typical/optimal communication sequences (MSC)
- error sequences (MSC)
- optionally - full specification in (HMSC)
- distributed specification (SDL)

## Formal model benefits

- (H)MSC to SDL transformation (realization)
- SDL to source code transformation (implementation)
- MSC to test case transformation
- simulation to MSC transformation (membership checking)
- ...

## IBM Rational

- from tools of Telelogic (SDT, Geode, Tau)
- drawing, import, export
- automatic implementation in C++
- simulation support

## SanDriLa SDL

- MS Visio stencil
- drawing, import, export
- analyses of states in process diagrams
- open for addons

## Cinderella SDL

- modelling, import, export
- analyses and simulation

## Petri Nets

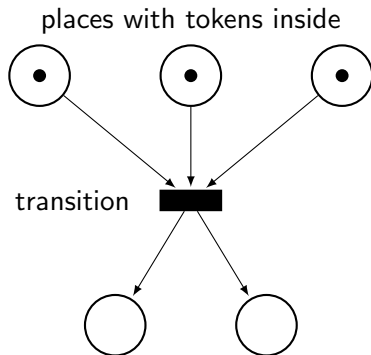
# Petri Nets

C. A. Petri: Kommunikation mit automaten, 1962

## Basic components:

- places
- transitions
- tokens
- arcs

**Marking** = configuration  
= distribution of tokens  
= vector of #s of tokens in places



A transition can be fired if there is a token in each of its input places.

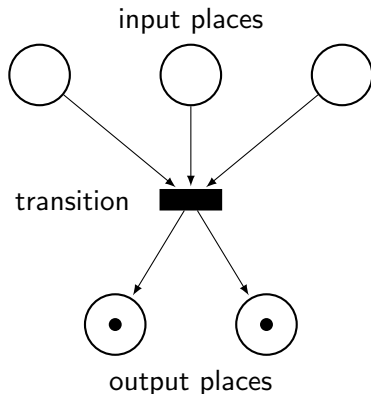
# Petri Nets

C. A. Petri: Kommunikation mit automaten, 1962

## Basic components:

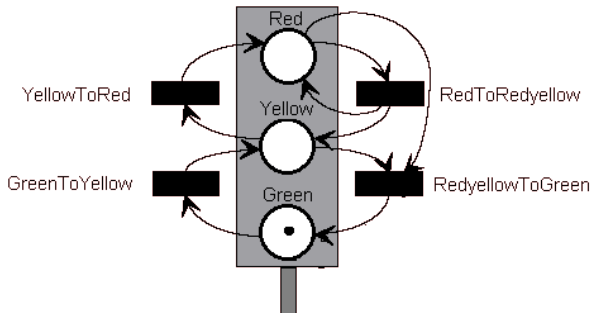
- places
- transitions
- tokens
- arcs

**Marking** = configuration  
= distribution of tokens  
= vector of #s of tokens in places

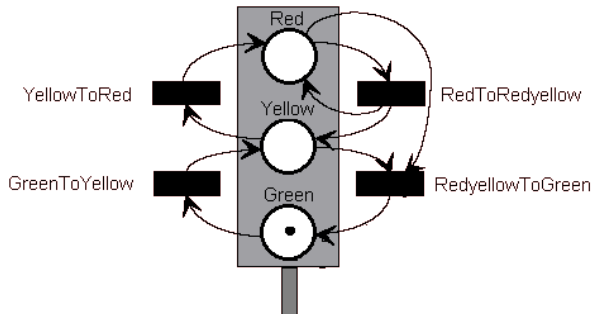


Tokens from input places are removed and new tokens are added into the output places of the fired transition.

# Demonstration Example #1



# Demonstration Example #1



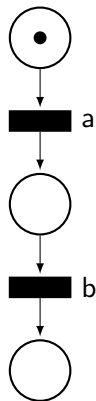
What is wrong in this example?



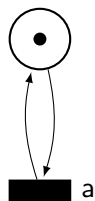


# Basic Constructions

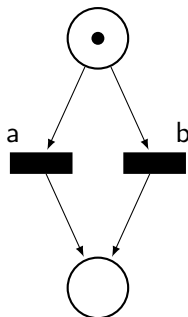
Sequential execution



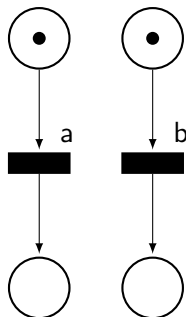
Iteration



Alternative

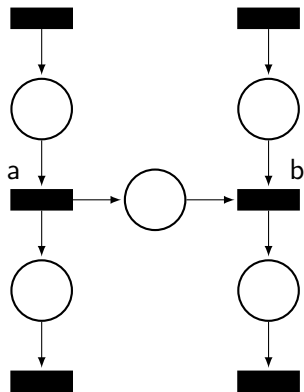


Parallel execution

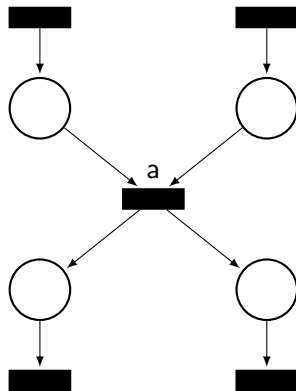


# Basic Constructions

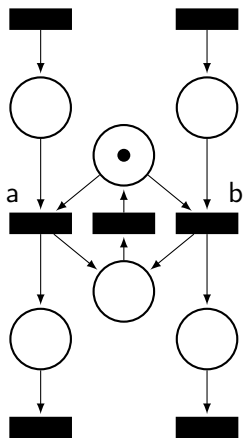
Semaphore



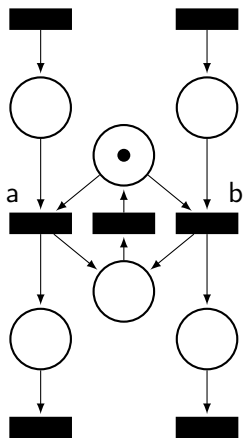
Rende-vous



# Basic Constructions

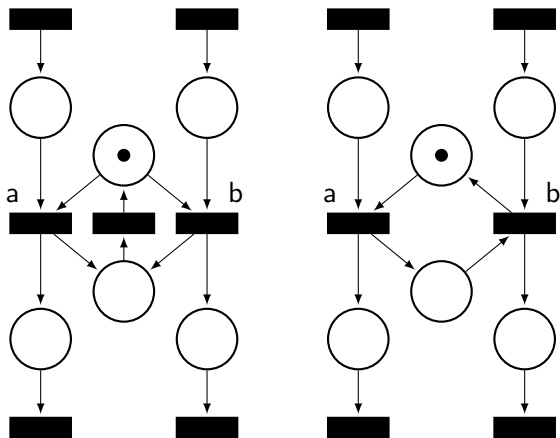


# Basic Constructions



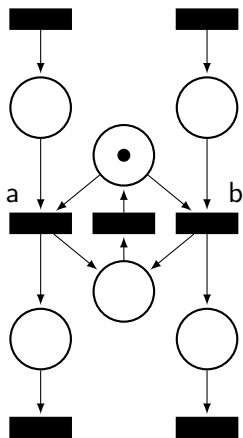
Critical section

# Basic Constructions

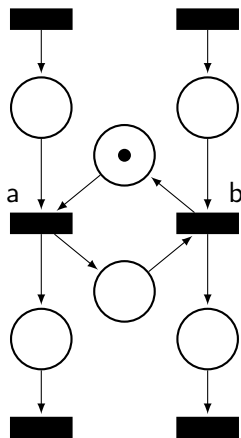


Critical section

# Basic Constructions

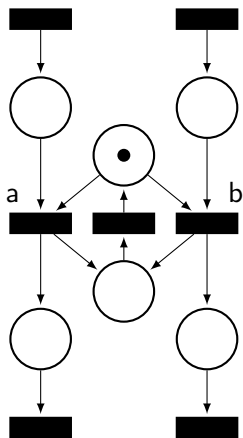


Critical section

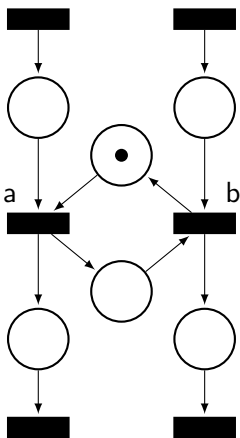


Alternation

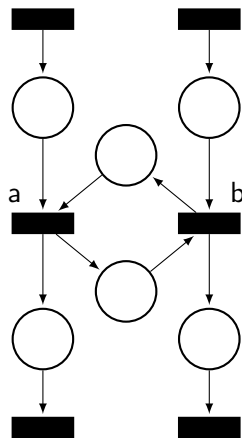
# Basic Constructions



Critical section

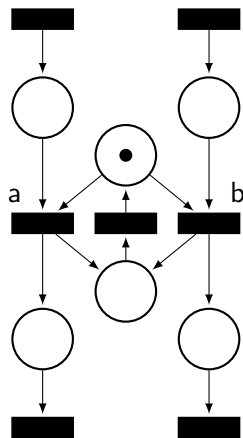


Alternation

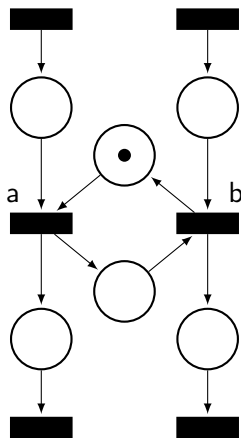




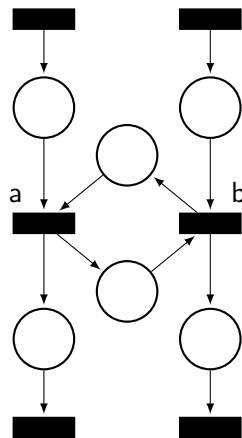
# Basic Constructions



Critical section



Alternation



Deadlock

# Different Modifications/Extensions of Petri Nets

- Condition-Event Petri nets (C-E PN)
- Place-Transition Petri nets (P-T PN)
- Coloured Petri nets
- Hierarchical Petri nets
- Timed Petri nets
- Time Petri nets
- Stochastic Petri nets

# Condition-Event Petri Nets

In this case:

- places = conditions
- transitions = event

An event/transition is *enabled* if and only if

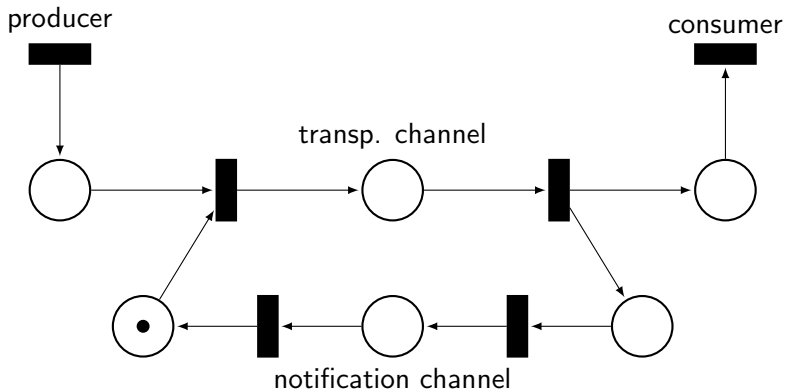
- all its pre-conditions are true and
- all its post-conditions are false.

I.e., an event occurrence negates its pre- and post-conditions.

Therefore, there is one or none token in each place.

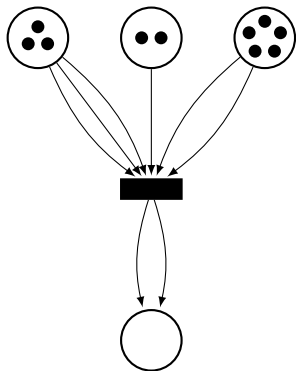
## Transition-Place Petri Nets

An arbitrary number of tokens in each place.

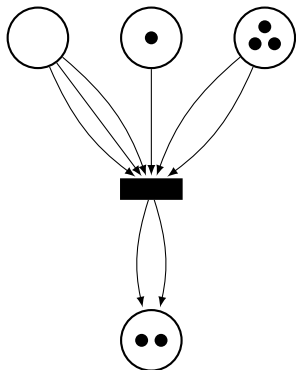


Producer-consumer model for bounded transport channel.

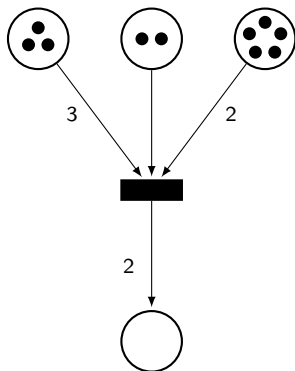
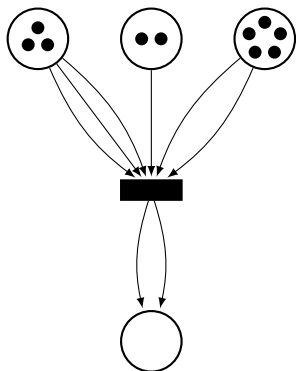
## Additional Constructs - Arc Multiplicity



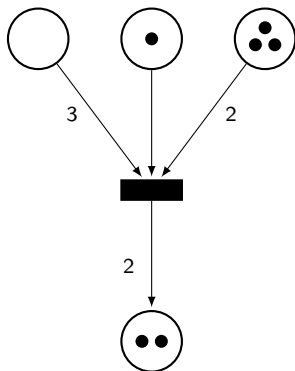
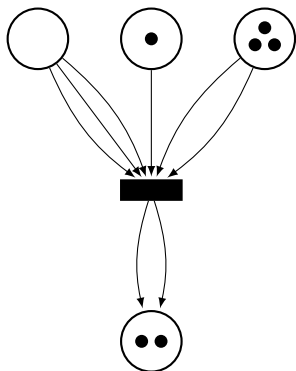
## Additional Constructs - Arc Multiplicity



## Additional Constructs - Arc Multiplicity

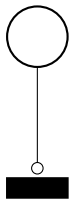


## Additional Constructs - Arc Multiplicity



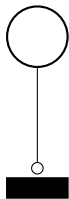


## Additional Constructs - Inhibitor and Reset Arcs

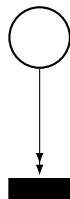


An **inhibitor arc** imposes the precondition that the transition may only fire when the place is empty.

## Additional Constructs - Inhibitor and Reset Arcs



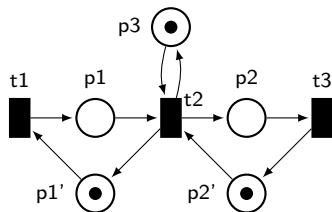
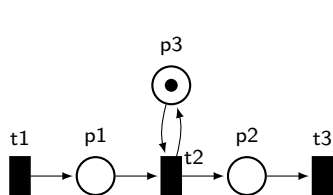
An **inhibitor arc** imposes the precondition that the transition may only fire when the place is empty.



A **reset arc** does not impose a precondition on firing, and empties the place when the transition fires.

# Properties of Petri nets

- **reachability** - reachability tree or coverability tree
- **bounded (safe) places**
  - a place with a **bound** on the number of its tokens in all reachable markings
  - a place is **safe** if the number of its tokens  $\leq 1$  in all reachable markings
- **liveness**
  - a transition is **live** if, from every marking, one can reach a marking where the transition is enabled
  - a net is **live** if all its transitions are live



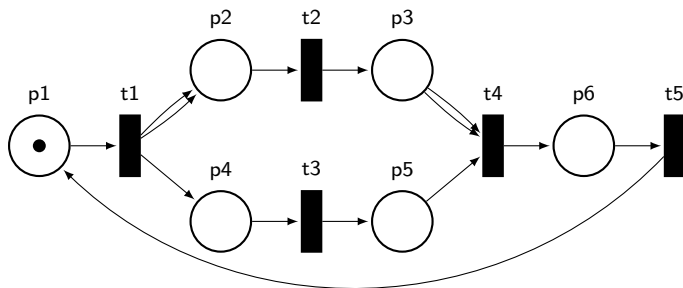
# Properties of Petri nets

- **p-invariant**

- an invariant vector on places, i.e. a multiset of places representing weighting such that any such weighted marking remains invariant by any firing, e.g.  $3 * p_1 + p_2 + p_3 + p_4 + p_5 + 3 * p_6$ .

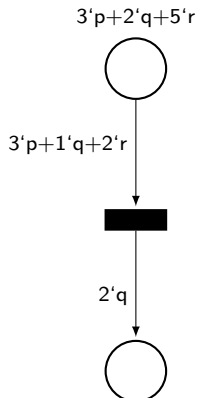
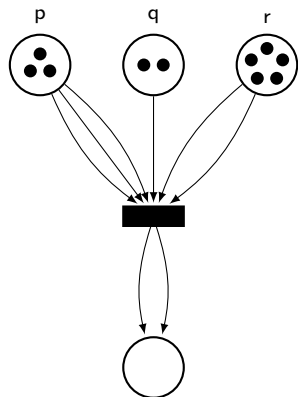
- **t-invariant**

- an invariant vector on transitions, i.e. a multiset of transitions whose firing leave invariant any marking, e.g.  $t_1 + 2 * t_2 + t_3 + t_4 + t_5$ .



# Coloured Petri Nets

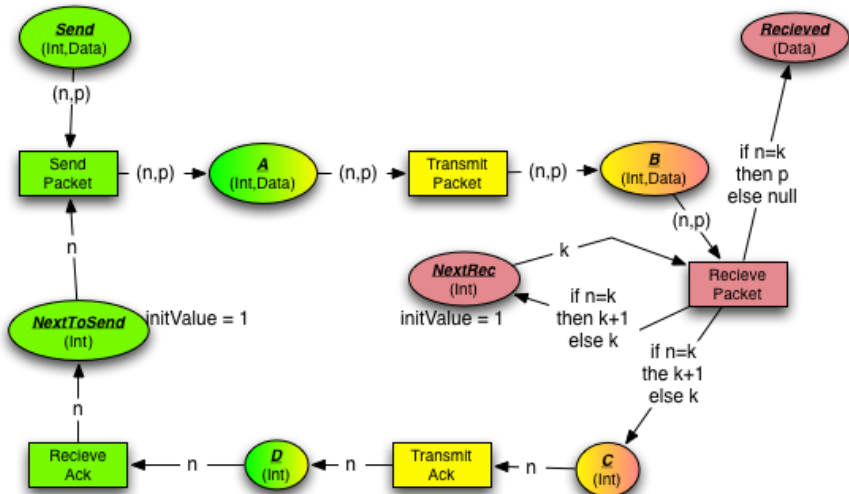
Different colours (classes) of tokens.



marking expression, arc expression, transition guard (next slide)

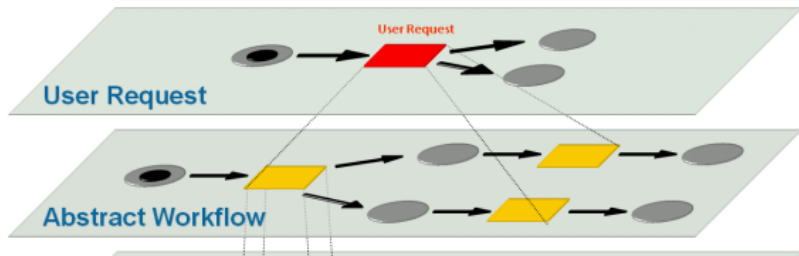
Colours usually serves for data type representation.

# Coloured Petri Net Example



source: [http://scienceblogs.com/goodmath/2007/10/colored\\_petri\\_nets.php](http://scienceblogs.com/goodmath/2007/10/colored_petri_nets.php)

# Hierarchical Petri Nets



# Time PN, Timed PN, Stochastic PN, ...

## priority nets

- priorities of concurrent transitions

## time (or timed-arc) nets

- tokens has its lifetime, arcs to transitions are labeled by time intervals of required ages of tokens

## timed nets

- firing starts when a transition is enabled but it takes some specified time to produce output

## stochastic nets

- probability distribution on time to fire (exponential, deterministic, or general distributions)



# PN Tools

## CPN Tools

- Coloured Petri Nets (with prioritized transitions and real time support)
- editor, simulation, analyses

## Tapall

- Timed-Arc Petri Nets (with real time support)
- editor, simulation, compositional models, TCTL logic checker

## TimeNET

- Coloured and Stochastic PN with non-exponential distributions
- editor, simulation, analyses (p-invariant, performance analyses)

## **SNOOPY, TINA - Time petri Net Analyzer, Roméo, ...**

**And many more tools and use cases, see, e.g.**

<http://www.informatik.uni-hamburg.de/TGI/PetriNets/tools/quick.html>  
<http://cs.au.dk/cpnets/industrial-use/>

## Queueing theory

## Queueing theory

In 1909 A.K. Erlang, a danish telephone engineer, was asked:

“What the queue capacity should be  
of the central telephone switch in Copenhagen?”

# Queueing theory

In 1909 A.K. Erlang, a danish telephone engineer, was asked:

“What the queue capacity should be  
of the central telephone switch in Copenhagen?”

## **Our motivation example:**

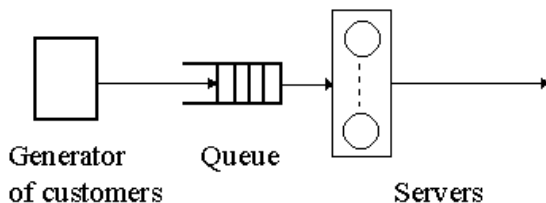
30 customers will visit the Machine in an hour.

Each will use it for a minute and a half.

How busy is the Cash Machine?

For how long time does a customer wait?

## Questioning about Queues



- mean number of queueing (and being served) requests
- mean service and queueing time
- mean system delay (empty queue)
- how many servers do I need to ...

## Queue parameters - Kendall Notation

$A/S/n/B/K/SD$

**A** - interarrival-time distribution

**G** - general, **M** - Poisson, **D** - deterministic...

**S** - service time distribution

**G** - general, **M** - exponential, **D** - deterministic...

**n** - number of servers

**1, 2, ...,  $\infty$**

**B** - buffer size (the max. number of waiting and served requests)

**1, 2, ...,  $\infty$**

**K** - population size

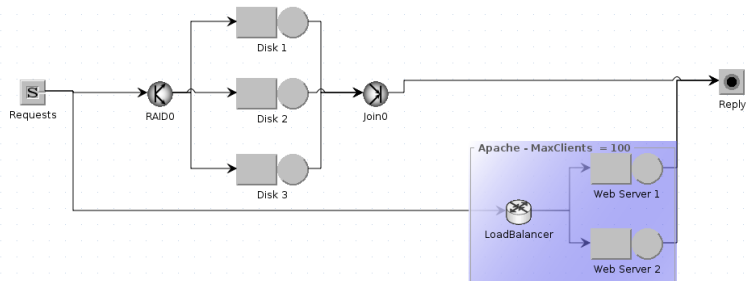
**1, 2, ...,  $\infty$**

**SD** - service discipline

**FIFO, LIFO, Random, RR** - Round Robin

E.g.,  $M/G/1/\infty$

# Queueing Networks



- open and closed networks
- system dependences
- traffic intensity
- occupancy (on different servers), bottleneck detection, ...
- very similar to Stochastic Petri Nets

## Solutions / Question answering

General solution:

- simulation

For specific types of queues:

- analytical results



General solution:

- simulation

For specific types of queues:

- analytical results

**Our motivation example:**

30 customers will visit the Machine in an hour.

Each will use it for a minute and a half.

How busy is the Cash Machine? How long do customers wait?

## Solutions / Question answering

General solution:

- simulation

For specific types of queues:

- analytical results

**Our motivation example:**

30 customers will visit the Machine in an hour.

Each will use it for a minute and a half.

How busy is the Cash Machine? How long do customers wait?

**Solution** if the queue is  $M/M/1/\infty$ :

The utilization of the Cash Machine is 45 minutes in an hour, i.e. 75%.

Average number of customers at the Cash Machine is  $75/(100 - 75) = 3$ .

I.e., the average waiting of a customer is 4.5 minutes.

# Tools for Queueing Systems

## G/M/c-like queue

- online steady-state solution of a G/M/c-like queue
- <http://queueing-systems.ens-lyon.fr/formGMC.php>

## Queueing Simulation

- online queueing network analyzer
- <http://www.stat.auckland.ac.nz/~stats255/qsim/qsim.html>

## JMT - Java Modelling Tools

- framework for model simulation and workload analysis
- <http://jmt.sourceforge.net/>

## SimEvents

- simulation engine and component library for Simulink (MATLAB)
- <http://www.mathworks.com/products/simevents/>

## Up-to-date List of relevant Queueing theory based tools:

<http://web2.uwindsor.ca/math/hlynka/qsoft.html>

## Relevant Lectures

IV113 Úvod do validace a verifikace (Barnat)

IV109 Modelování a simulace (Pelánek)

IA159 Formal verification methods (Strejček)

PV177 Laboratoř pokročilých síťových technologií (Řehák)

IA158 Real Time Systems (Brázdil)

# References

- ITU-T recommendation Z.120: Message Sequence Charts (MSC). 2011.
- ITU-T recommendation Z.100: Specification Description Language (SDL). 2011.
- S. Mullender. *Distributed Systems*. ACM, 1993.
- D. Peled. *Software Reliability Methods*. Springer, 2001.
- R. Bræk et al. *TIME: The Integrated Method*. SINTEF, 1999.
- L. Doldi. *Validation of Communications Systems with SDL*. Wiley, 2003.
- M. Broy and K. Stølen. *Specification and Development of Interactive Systems: Focus on Streams, Interfaces, and Refinement*. Springer, 2001.
- W. Jia and W. Zhou. *Distributed Network Systems: From Concepts to Implementation*. Springer, 2005.
- M. Češka. *Petriho síť*. Akademické nakladatelství CERM Brno, 1994.
- J. Markl. *Petriho síť*. VŠB - Technická univerzita Ostrava, 1996.
- G. Giambene. *Queuing Theory and Communications - Networks and Applications*. Springer, 2005.
- D. Gross et al. *Fundamentals of Queuing Theory*. Wiley, 2008.