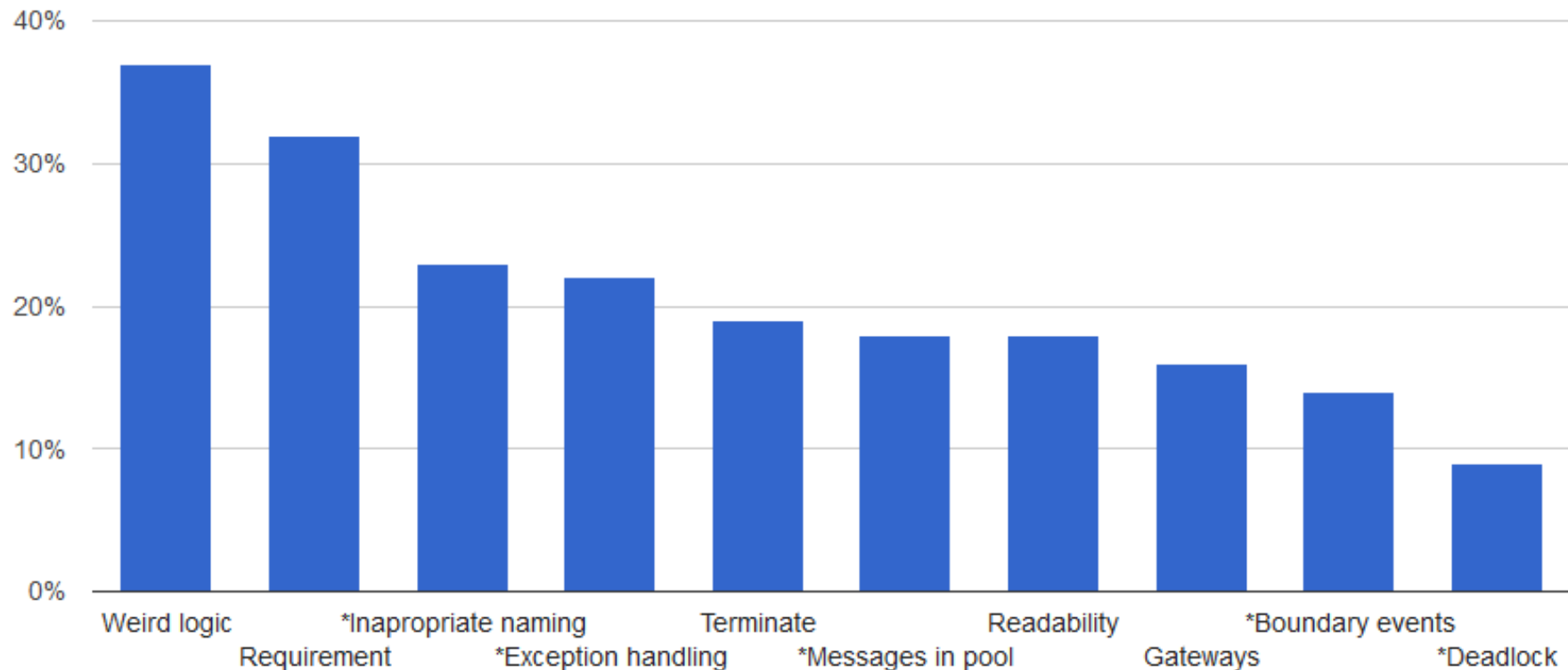


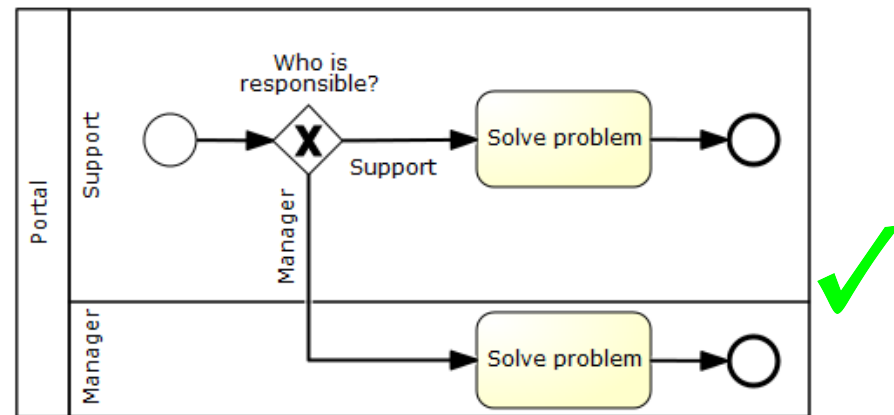
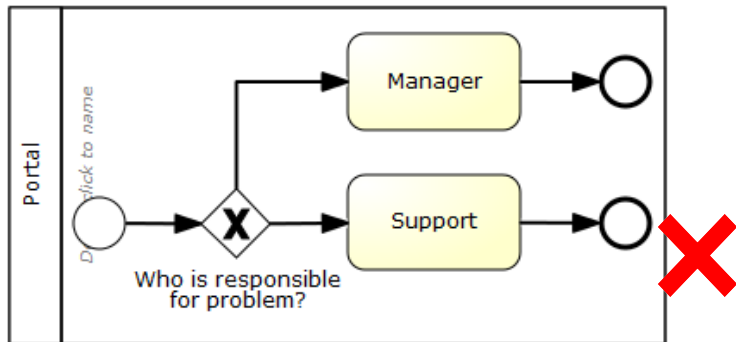
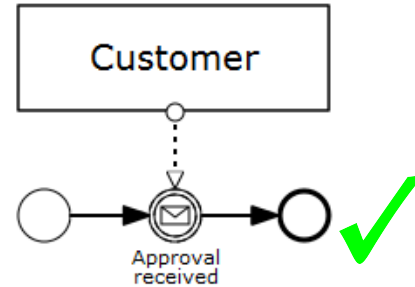
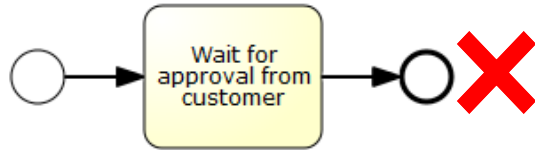
Seminar Overview

- Common mistakes and example
- IBPM test
- Individual consultations

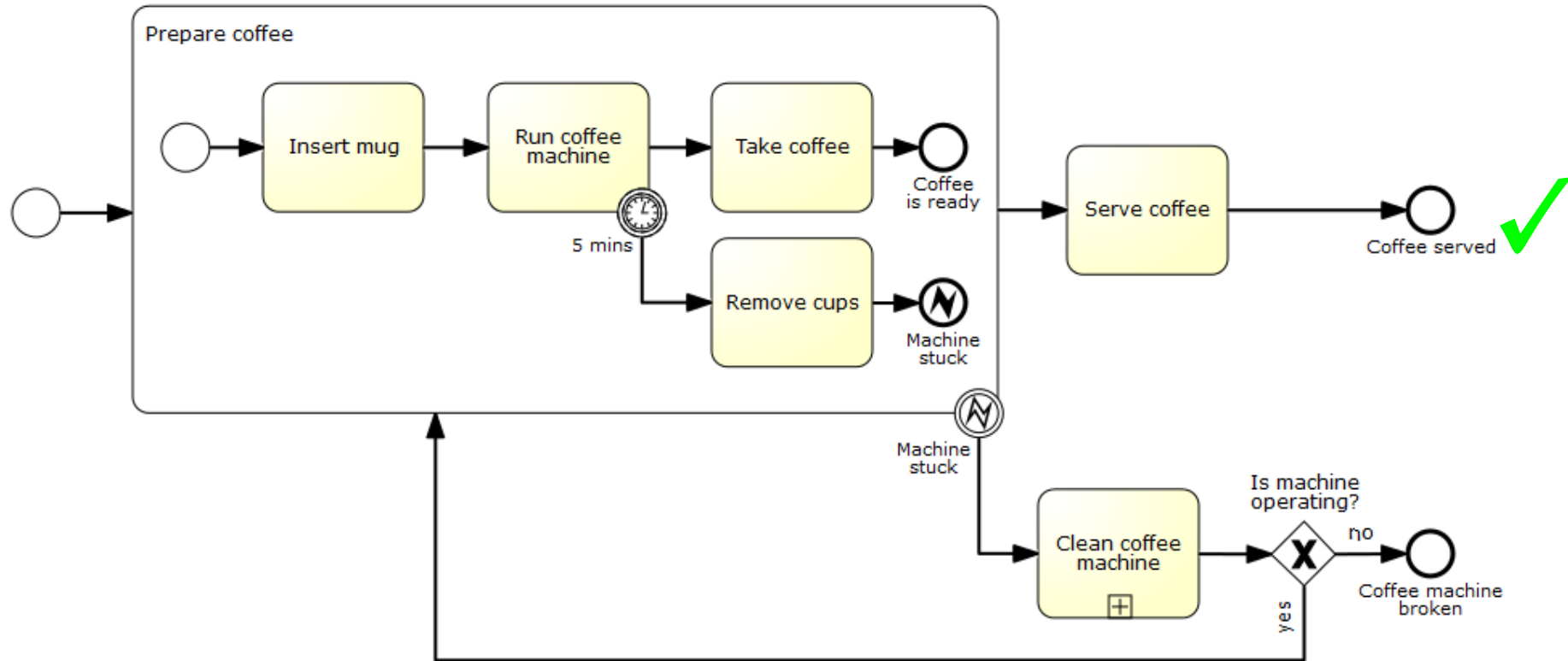
Categories



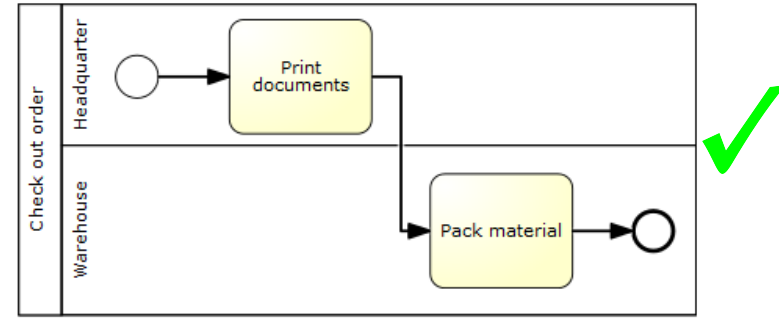
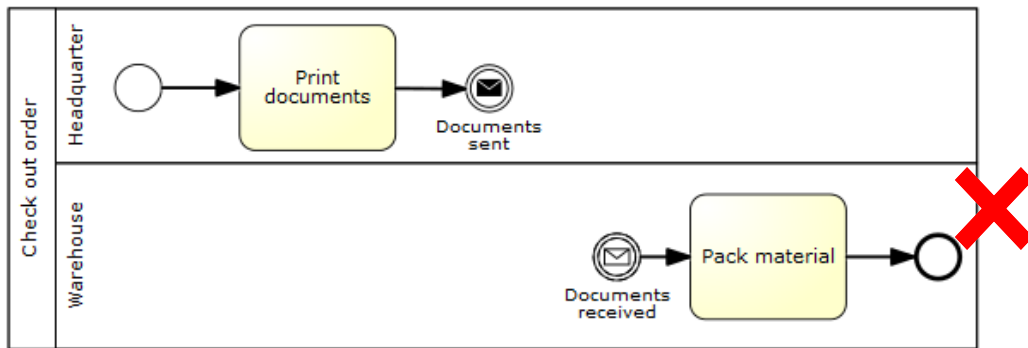
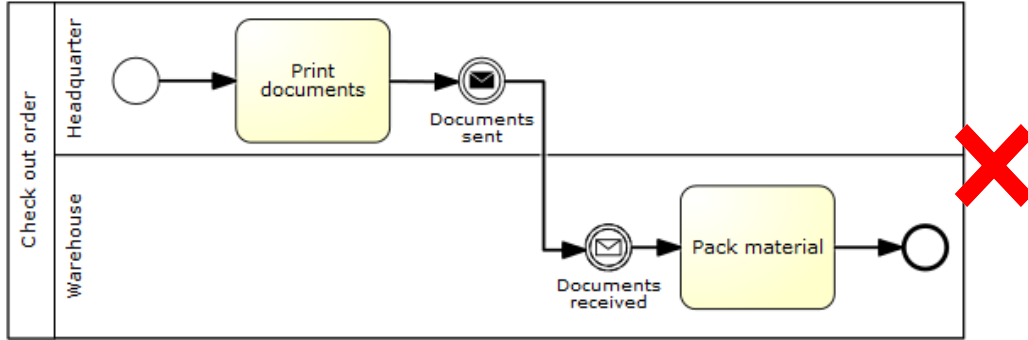
Inappropriate Naming



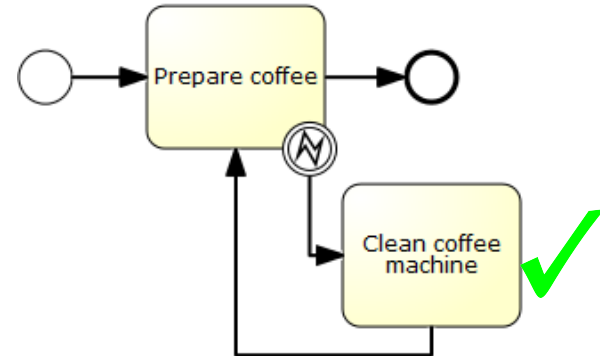
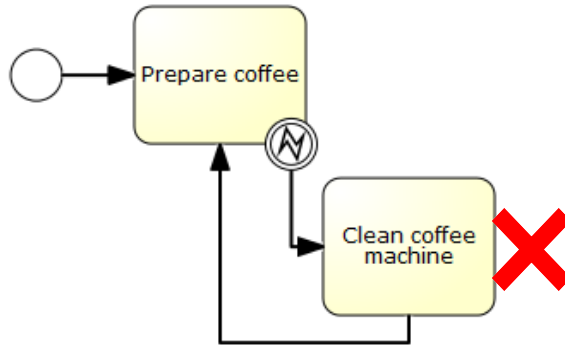
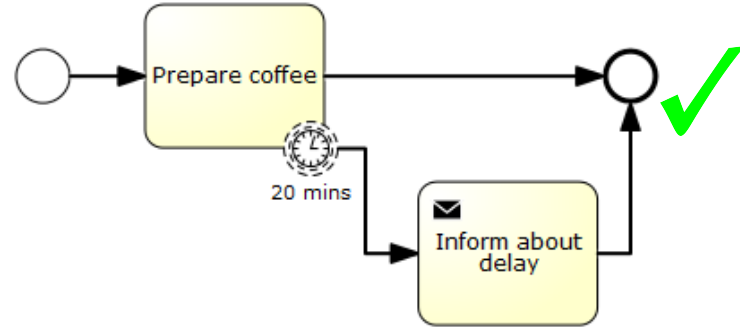
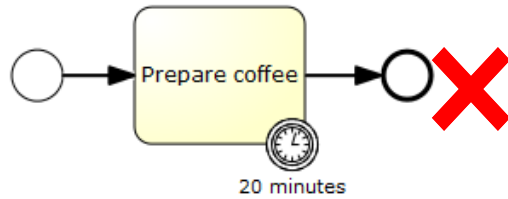
Exception handling



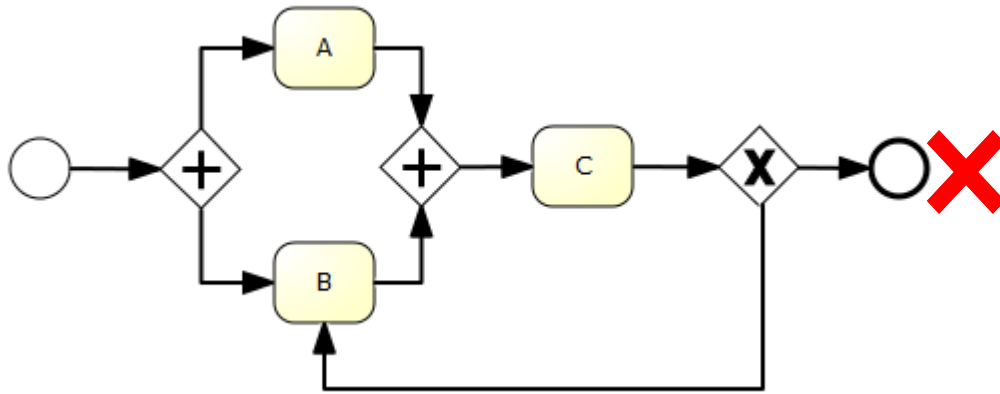
Messages in Pool



Boundary Events



Deadlock



IBPM Test

1. Go to: <https://ibmbpm:9443/ProcessCenter/login.jsp>
2. Login: NameSurname, Password: UCO
 - e.g. JanNovak/123456
3. Create New Process App
4. Run IBM Process Designer 8.5 with same Login and Password
5. Open Process App in Designer, create small process and try to save it
6. Report unusual behavior