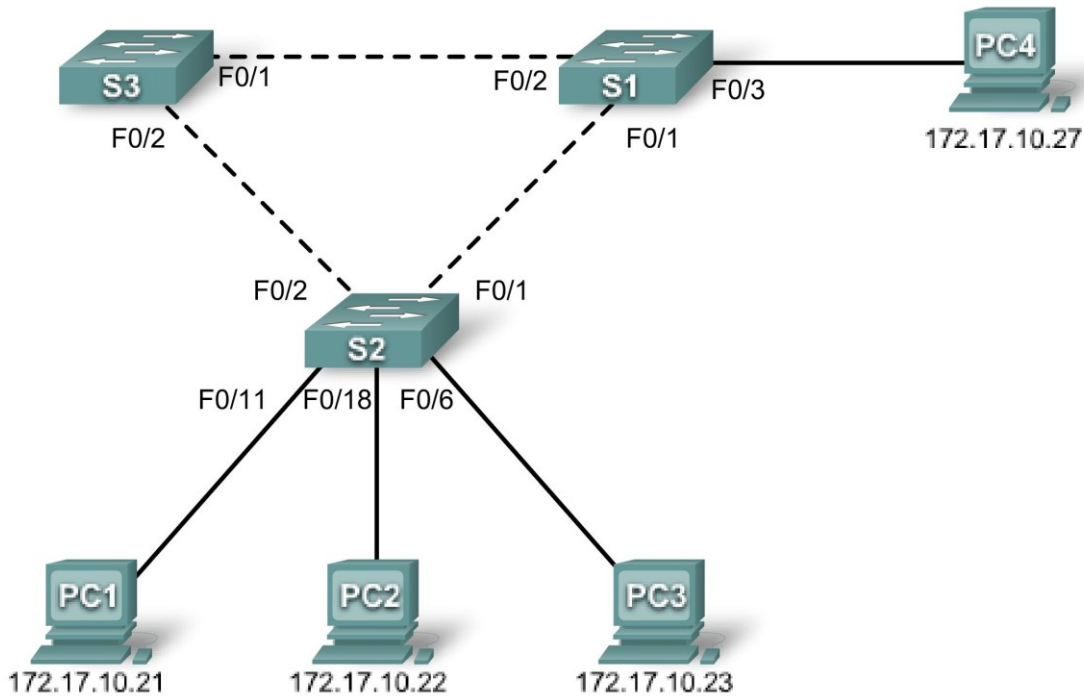


Lab 5.5.1: Basic Spanning Tree Protocol

Topology Diagram



Addressing Table

Device (Hostname)	Interface	IP Address	Subnet Mask	Default Gateway
S1	VLAN 1	172.17.10.1	255.255.255.0	N/A
S2	VLAN 1	172.17.10.2	255.255.255.0	N/A
S3	VLAN 1	172.17.10.3	255.255.255.0	N/A
PC1	NIC	172.17.10.21	255.255.255.0	172.17.10.254
PC2	NIC	172.17.10.22	255.255.255.0	172.17.10.254
PC3	NIC	172.17.10.23	255.255.255.0	172.17.10.254
PC4	NIC	172.17.10.27	255.255.255.0	172.17.10.254

Learning Objectives

Upon completion of this lab, you will be able to:

- Cable a network according to the topology diagram
- Erase the startup configuration and reload the default configuration, setting a switch to the default state
- Perform basic configuration tasks on a switch
- Observe and explain the default behavior of Spanning Tree Protocol (STP, 802.1D)
- Observe the response to a change in the spanning tree topology

Task 1: Perform Basic Switch Configurations

Step 1: Cable a network that is similar to the one in the topology diagram.

You can use any current switch in your lab as long as it has the required interfaces shown in the topology diagram. The output shown in this lab is based on Cisco 2960 switches. Other switch models may produce different output.

Set up console connections to all three switches.

Step 2: Clear any existing configurations on the switches.

Clear NVRAM, delete the vlan.dat file, and reload the switches. Refer to Lab 2.5.1 for the procedure. After the reload is complete, use the **show vlan** privileged EXEC command to confirm that only default VLANs exist and that all ports are assigned to VLAN 1.

```
S1#show vlan
```

VLAN	Name	Status	Ports
1	default	active	Fa0/1, Fa0/2, Fa0/3, Fa0/4 Fa0/5, Fa0/6, Fa0/7, Fa0/8 Fa0/9, Fa0/10, Fa0/11, Fa0/12 Fa0/13, Fa0/14, Fa0/15, Fa0/16 Fa0/17, Fa0/18, Fa0/19, Fa0/20 Fa0/21, Fa0/22, Fa0/23, Fa0/24 Gig0/1, Gig0/2
1002	fddi-default	active	
1003	token-ring-default	active	
1004	fddinet-default	active	
1005	trnet-default	active	

Step 3: Configure basic switch parameters.

Configure the S1, S2, and S3 switches according to the following guidelines:

- Configure the switch hostname.
- Disable DNS lookup.
- Configure an EXEC mode password of **class**.

- Configure a password of **cisco** for console connections.
- Configure a password of **cisco** for vty connections.

(Output for S1 shown)

```
Switch>enable
Switch#configure terminal
Enter configuration commands, one per line.  End with CNTL/Z.
Switch(config)#hostname S1
S1(config)#enable secret class
S1(config)#no ip domain-lookup
S1(config)#line console 0
S1(config-line)#password cisco
S1(config-line)#login
S1(config-line)#line vty 0 15
S1(config-line)#password cisco
S1(config-line)#login
S1(config-line)#end
%SYS-5-CONFIG_I: Configured from console by console
S1#copy running-config startup-config
Destination filename [startup-config]?
Building configuration...
[OK]
```

Task 2: Prepare the Network

Step 1: Disable all ports by using the shutdown command.

Ensure that the initial switch port states are inactive with the **shutdown** command. Use the **interface-range** command to simplify this task.

```
S1(config)#interface range fa0/1-24
S1(config-if-range)#shutdown
S1(config-if-range)#interface range gi0/1-2
S1(config-if-range)#shutdown

S2(config)#interface range fa0/1-24
S2(config-if-range)#shutdown
S2(config-if-range)#interface range gi0/1-2
S2(config-if-range)#shutdown

S3(config)#interface range fa0/1-24
S3(config-if-range)#shutdown
S3(config-if-range)#interface range gi0/1-2
S3(config-if-range)#shutdown
```

Step 2: Re-enable the user ports on S1 and S2 in access mode.

Refer to the topology diagram to determine which switch ports on S2 are activated for end-user device access. These three ports will be configured for access mode and enabled with the **no shutdown** command.

```
S1(config)#interface fa0/3
S1(config-if)#switchport mode access
S1(config-if)#no shutdown

S2(config)#interface range fa0/6, fa0/11, fa0/18
```

```
S2(config-if-range)#switchport mode access
S2(config-if-range)#no shutdown
```

Step 3: Enable trunk ports on S1, S2, and S3.

Only a single VLAN is being used in this lab, however trunking has been enabled on all links between switches to allow for additional VLANs to be added in the future.

```
S1(config-if-range)#interface range fa0/1, fa0/2
S1(config-if-range)#switchport mode trunk
S1(config-if-range)#no shutdown
```

```
S2(config-if-range)#interface range fa0/1, fa0/2
S2(config-if-range)#switchport mode trunk
S2(config-if-range)#no shutdown
```

```
S3(config-if-range)#interface range fa0/1, fa0/2
S3(config-if-range)#switchport mode trunk
S3(config-if-range)#no shutdown
```

Step 4: Configure the management interface address on all three switches.

```
S1(config)#interface vlan1
S1(config-if)#ip address 172.17.10.1 255.255.255.0
S1(config-if)#no shutdown
```

```
S2(config)#interface vlan1
S2(config-if)#ip address 172.17.10.2 255.255.255.0
S2(config-if)#no shutdown
```

```
S3(config)#interface vlan1
S3(config-if)#ip address 172.17.10.3 255.255.255.0
S3(config-if)#no shutdown
```

Verify that the switches are correctly configured by pinging between them. From S1, ping the management interface on S2 and S3. From S2, ping the management interface on S3.

Were the pings successful? _____

If not, troubleshoot the switch configurations and try again.

Task 3: Configure Host PCs

Configure the Ethernet interfaces of PC1, PC2, PC3, and PC4 with the IP address, subnet mask, and gateway indicated in the addressing table at the beginning of the lab.

Task 4: Configure Spanning Tree

Step 1: Examine the default configuration of 802.1D STP.

On each switch, display the spanning tree table with the **show spanning-tree** command. Root selection varies depending on the BID of each switch in your lab resulting in varying outputs.

```
S1#show spanning-tree
```

```
VLAN0001
```

Spanning tree enabled protocol ieee

Root ID Priority 32769
 Address 0019.068d.6980

This bridge is the root

Hello Time 2 sec Max Age 20 sec Forward Delay 15 sec

Bridge ID Priority 32769 (priority 32768 sys-id-ext 1)

Address 0019.068d.6980
Hello Time 2 sec Max Age 20 sec Forward Delay 15 sec
Aging Time 300

Interface	Role	Sts	Cost	Prio.Nbr	Type
Fa0/1	Desg	FWD	19	128.3	P2p
Fa0/2	Desg	FWD	19	128.4	P2p
Fa0/3	Desg	FWD	19	128.5	P2p

S2#**show spanning-tree**

VLAN0001

Spanning tree enabled protocol ieee

Root ID Priority 32769
 Address 0019.068d.6980
 Cost 19
 Port 1 (FastEthernet0/1)
Hello Time 2 sec Max Age 20 sec Forward Delay 15 sec

Bridge ID Priority 32769 (priority 32768 sys-id-ext 1)

Address 001b.0c68.2080
Hello Time 2 sec Max Age 20 sec Forward Delay 15 sec
Aging Time 300

Interface	Role	Sts	Cost	Prio.Nbr	Type
Fa0/1	Root	FWD	19	128.1	P2p
Fa0/2	Desg	FWD	19	128.2	P2p
Fa0/6	Desg	FWD	19	128.6	P2p
Fa0/11	Desg	FWD	19	128.11	P2p
Fa0/18	Desg	FWD	19	128.18	P2p

S3#**show spanning-tree**

VLAN0001

Spanning tree enabled protocol ieee

Root ID Priority 32769
 Address 0019.068d.6980
 Cost 19
 Port 1 (FastEthernet0/1)
Hello Time 2 sec Max Age 20 sec Forward Delay 15 sec

Bridge ID Priority 32769 (priority 32768 sys-id-ext 1)

Address 001b.5303.1700
Hello Time 2 sec Max Age 20 sec Forward Delay 15 sec
Aging Time 300

Interface	Role	Sts	Cost	Prio.Nbr	Type
Fa0/1	Root	FWD	19	128.1	P2p
Fa0/2	Altn	BLK	19	128.2	P2p

Step 2: Examine the output.

The bridge identifier (bridge ID), stored in the spanning tree BPDU consists of the bridge priority, the system ID extension, and the MAC address. The combination or addition of the bridge priority and the system ID extension are known as the **bridge ID priority**. The system ID extension is always the number of the VLAN. For example, the system ID extension for VLAN 100 is 100. Using the default bridge priority value of 32768, the **bridge ID priority** for VLAN 100 would be 32868 (32768 + 100).

The **show spanning-tree** command displays the value of **bridge ID priority**. Note: The “priority” value within the parentheses represents the bridge priority value, which is followed by the value of the system ID extension.

Answer the following questions based on the output.

- What is the bridge ID priority for switches S1, S2, and S3 on VLAN 1?
 - S1 _____
 - S2 _____
 - S3 _____
- Which switch is the root for the VLAN 1 spanning tree? _____
- Which spanning tree ports are in the blocking state on the root switch? _____
- Do either of the non-root switches have a blocking port? _____ Which switch and port is in the blocking state? _____
- How does STP elect the root switch? _____
- Since the bridge priorities are all the same, what else does the switch use to determine the root? _____

Task 5: Observe the response to the topology change in 802.1D STP

Now let's observe what happens when we intentionally simulate a broken link

Step 1: Place the switches in spanning tree debug mode using the command `debug spanning-tree events`.

```
S1#debug spanning-tree events
Spanning Tree event debugging is on
```

```
S2#debug spanning-tree events
Spanning Tree event debugging is on
```

```
S3#debug spanning-tree events
Spanning Tree event debugging is on
```

Step 2: Intentionally shutdown a port on the root switch. This example uses S1, since it is the

root. Your root switch may vary.

```
S1(config)#interface fa0/1
S1(config-if)#shutdown
```

Step 3: Record the debug output from the non-root switches. In this example we record the output from S2 and S3, since they are the non-root switches.

```
S2#
1w2d: STP: VLAN0001 we are the spanning tree root
S2#
1w2d: %LINEPROTO-5-UPDOWN: Line protocol on Interface FastEthernet0/1,
changed state to down
1w2d: %LINK-3-UPDOWN: Interface FastEthernet0/1, changed state to down
S2#
1w2d: STP: VLAN0001 heard root 32769-0019.068d.6980 on Fa0/2
1w2d:      supersedes 32769-001b.0c68.2080
1w2d: STP: VLAN0001 new root is 32769, 0019.068d.6980 on port Fa0/2, cost 38
1w2d: STP: VLAN0001 sent Topology Change Notice on Fa0/2

S3#
1w2d: STP: VLAN0001 heard root 32769-001b.0c68.2080 on Fa0/2
1w2d: STP: VLAN0001 Fa0/2 -> listening
S3#
1w2d: STP: VLAN0001 Topology Change rcvd on Fa0/2
1w2d: STP: VLAN0001 sent Topology Change Notice on Fa0/1
S3#
1w2d: STP: VLAN0001 Fa0/2 -> learning
S3#
1w2d: STP: VLAN0001 sent Topology Change Notice on Fa0/1
1w2d: STP: VLAN0001 Fa0/2 -> forwarding
```

Based on the output from this example, when the link from S2 that is connected to the root switch goes down, what is its initial conclusion about the spanning tree root? _____

Once S2 receives new information on Fa0/2, what new conclusion does it draw? _____

Port Fa0/2 on S3 was previously in a blocking state before the link between S2 and S1 went down. What states does it go through as a result of the topology change? _____

Step 4: Examine what has changed in the spanning tree topology using the show spanning-tree command.

```
S2#show spanning-tree
```

```
VLAN0001
  Spanning tree enabled protocol ieee
  Root ID    Priority    32769
            Address     0019.068d.6980
            Cost        38
            Port        2 (FastEthernet0/2)
            Hello Time   2 sec    Max Age 20 sec    Forward Delay 15 sec

  Bridge ID  Priority    32769 (priority 32768 sys-id-ext 1)
            Address     001b.0c68.2080
            Hello Time   2 sec    Max Age 20 sec    Forward Delay 15 sec
```

Aging Time 300

Interface	Role	Sts	Cost	Prio.Nbr	Type
Fa0/2	Root	FWD	19	128.2	P2p
Fa0/6	Desg	FWD	19	128.6	P2p
Fa0/11	Desg	FWD	19	128.11	P2p
Fa0/18	Desg	FWD	19	128.18	P2p

S3#**show spanning-tree**

VLAN0001

Spanning tree enabled protocol ieee

Root ID Priority 32769
 Address 0019.068d.6980
 Cost 19
 Port 1 (FastEthernet0/1)
 Hello Time 2 sec Max Age 20 sec Forward Delay 15 sec

Bridge ID Priority 32769 (priority 32768 sys-id-ext 1)
 Address 001b.5303.1700
 Hello Time 2 sec Max Age 20 sec Forward Delay 15 sec
 Aging Time 300

Interface	Role	Sts	Cost	Prio.Nbr	Type
Fa0/1	Root	FWD	19	128.1	P2p
Fa0/2	Desg	FWD	19	128.2	P2p

Answer the following questions based on the output.

1. What has changed about the way that S2 forwards traffic? _____
2. What has changed about the way that S3 forwards traffic? _____

Task 6: Using the show run command, record the configuration of each switch.

```
S1#show run
!<output omitted>
!
hostname S1
!
!
interface FastEthernet0/1
  switchport mode trunk
!
interface FastEthernet0/2
  switchport mode trunk
!
interface FastEthernet0/3
  switchport mode access
!
! <output omitted>
```



```
!
interface Vlan1
 ip address 172.17.10.1 255.255.255.0
!
end
```

```
S2#show run
!<output omitted>
!
hostname S2
!
!
interface FastEthernet0/1
 switchport mode trunk
!
interface FastEthernet0/2
 switchport mode trunk
!
! <output omitted>
!
interface FastEthernet0/6
 switchport mode access
!
interface FastEthernet0/11
 switchport mode access
!
interface FastEthernet0/18
 switchport mode access
!
!
interface Vlan1
 ip address 172.17.10.2 255.255.255.0
!
end
```

```
S3#show run
!<output omitted>
!
hostname S3
!
!
interface FastEthernet0/1
 switchport mode trunk
!
interface FastEthernet0/2
 switchport mode trunk
!
! <output omitted>
!
interface Vlan1
 ip address 172.17.10.3 255.255.255.0
!
end
```

Task 7: Clean Up

Erase the configurations and reload the default configurations for the switches. Disconnect and store the cabling. For PC hosts that are normally connected to other networks (such as the school LAN or to the Internet), reconnect the appropriate cabling and restore the TCP/IP settings.