

From academic project to an award-winning solution

Performance monitoring, visibility and security
in a single platform

Petr Špringl, Product Director



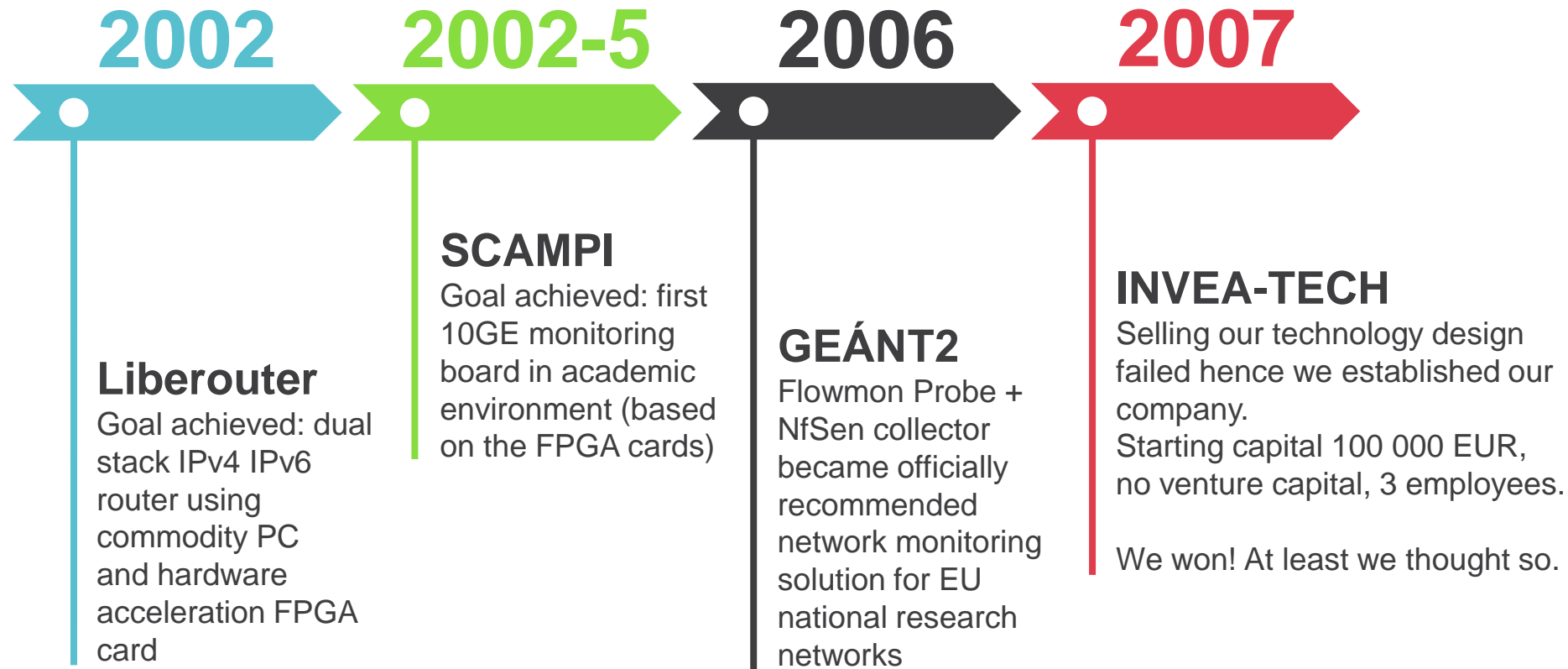
Flowmon

Driving Network Visibility



University projects as a start

University projects as a start





Tough first 12 months

Tough first 12 months

- Academic expectations VS real commercial world
 - NO NetFlow awareness on the market
 - Actually very long way from prototype to product
 - NO interest in expensive high-end equipment manufactured by new vendor with no business history
 - NO interest in product from resellers and distributors
 - NO success stories
 - NO references
- Pre-agreed businesses failed or was postponed
- Almost no profit and revenue, but employees, offices must be paid
- 50% of our capital was away in 7 months..

Strong market focus – first successes

Downgrades

in both speed and price to scale to an “average” customer

Marketing

workshops, conferences - introduction of flow monitoring and NBA to the market

Product - Solution

(NetFlow probe - complete network traffic monitoring solution)

Customer Services

professional analysis of network traffic, security and configurations problems

Many customer meetings

to identify market needs

First results

First 20 paying customers, official references
First partners (VARs/VADs) interested in the solution
Black numbers after 18 months from company founding

Growth on local market

- We educated market on flow monitoring and NBA
- With references and success stories we established channel partners (tens of certified partners in CZ today)
- Profitable since the 2nd year, first abroad customers
- Incremental employees growth (up to 100 today)
- Expansion to first foreign countries
- Main target
 - Going GLOBAL

Flowmon Global Presence



CZECH REPUBLIC

Czech Republic, 2007. The heart of Europe and Flowmon's origin. Current HQ and main R&D center. With 700+ customer, presence in 35+ countries, Gartner recognition since 2010, inclusion in Magic Quadrant for NPMD, Flowmon is leading the way of network monitoring and security technology that is high performing, scalable and easy to use.

NORTH AMERICA

With great experience we gained when working with customers in Canada, US and Mexico, we have decided to invest more in the local expansion starting in 2018.

2018

2009

EUROPE

Expansion to other countries of CE was natural. DACH, Benelux, Eastern and Southern Europe, UKI, Scandinavia and Baltics followed. Today, we enjoy the status of the top selling and one of the fastest growing technology companies in Europe.

2012

MIDDLE EAST

Success in Turkish datacenters opened the door for expansion in the region. Now we have operations and grow fast in other countries, including UAE and South Africa.

2011

ASIA

First non-european market. Built from scratch and today's n.1 export country. A tremendous growth over the past years has solidified Flowmon's position as a preferred option for many enterprise, government, education, manufacturing and ISP customers.

2015

AUSTRALIA AND APAC

Hunger for new technologies in the region has forced us to expand to these thriving countries and we are pleased to support our customers in South Korea, Vietnam, Singapore, Australia and India.

LATIN AMERICA

Our success in Spain and Portugal has naturally led us to start new cooperations with channel partners in Latin America. So far we've left our footprint mainly in Mexico and the Caribbean.

2016





is an international vendor devoted to innovative network traffic & performance & security monitoring



700+ customers
30+ countries



First 100G probes
in the world



Strong R&D
background



European
origin

Customer references



KONICA MINOLTA



vodafone



ORIFLAME
SWEDEN

SIEMENS

SLOVENSKÁ
športelňa



Volkswagen



Telefonica

Allianz



T-Mobile

GÉANT
Networks · Services · People



upc

Raiffeisen
BANK

e-on



Technology partner of
premium vendors



vmware®



ixia



The only vendor recognized in both NetFlow related
Gartner reports – network visibility & security

Gartner®

MAGIC QUADRANT

50™

Technology **Fast 50**

Deloitte.





Lessons learned and tips

Lessons learned

Academic expectations vs. *reality*

**It is necessary to find
an investment company
- business angel**

*NO - INVEA has used just
stockholder's equity*

**Industrial players are
looking for interesting
technologies**

*NO - industrial players are
looking for quick and effective
way ho to earn money in short
term interval*

**There is clear
legislation for the
technology transfer**

*NO - bunch of unclear
laws (in CZ)*

**There is huge gap
between academics
and industry people**

*YES - even worse than we
supposed*



Lessons learned

The biggest **misunderstandings**

Technology × Prototype
× Product × Successful
product

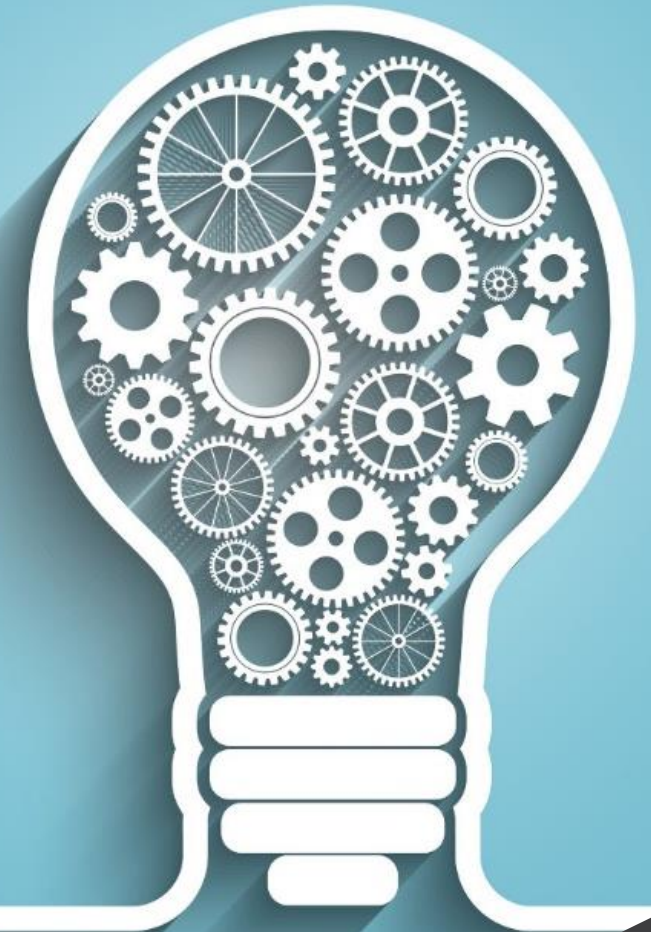
Industrial players are
technology enthusiasts

Industrial players love to
accommodate academic
technology

Market (customers)
understands up to date
technologies

Good products don't
need marketing

To have the best
technology is a win
strategy





Key Factors

- **Strong team of motivated people**
- Cooperation with academia is critical for technology spin-offs
 - Further R&D development and improvements
 - Great environment for evaluation and testing
 - Feedback to new products
 - Potential new employees
- Be fair to customers and partners
- Meet as much people as possible – experience sharing (business clubs, networking events, start-up events)
- Do not be afraid to take a risk

A photograph of a modern city street. In the foreground, there is a paved plaza with large, light-colored stone tiles. In the background, there are several tall, modern buildings with glass facades. The sky is bright, suggesting a sunny day. The overall scene is clean and urban.

**Building “your own” company is a hard work,
but it’s worth it.**

**If you have interesting idea/technology/prototype
think about its commercialization.**



Thank you

Performance monitoring, visibility and security
with a single solution

Petr Špringl, Product Director
petr.springl@flowmon.com

Flowmon Networks a.s.
Sochorova 3232/34
616 00 Brno, Czech Republic
www.flowmon.com



Flowmon

Driving Network Visibility