

FACULTY OF INFORMATICS  
MASARYK UNIVERSITY

**MUNI**

**New warehouse lease  
Homework 2**

**PV207 - Business Process Management**

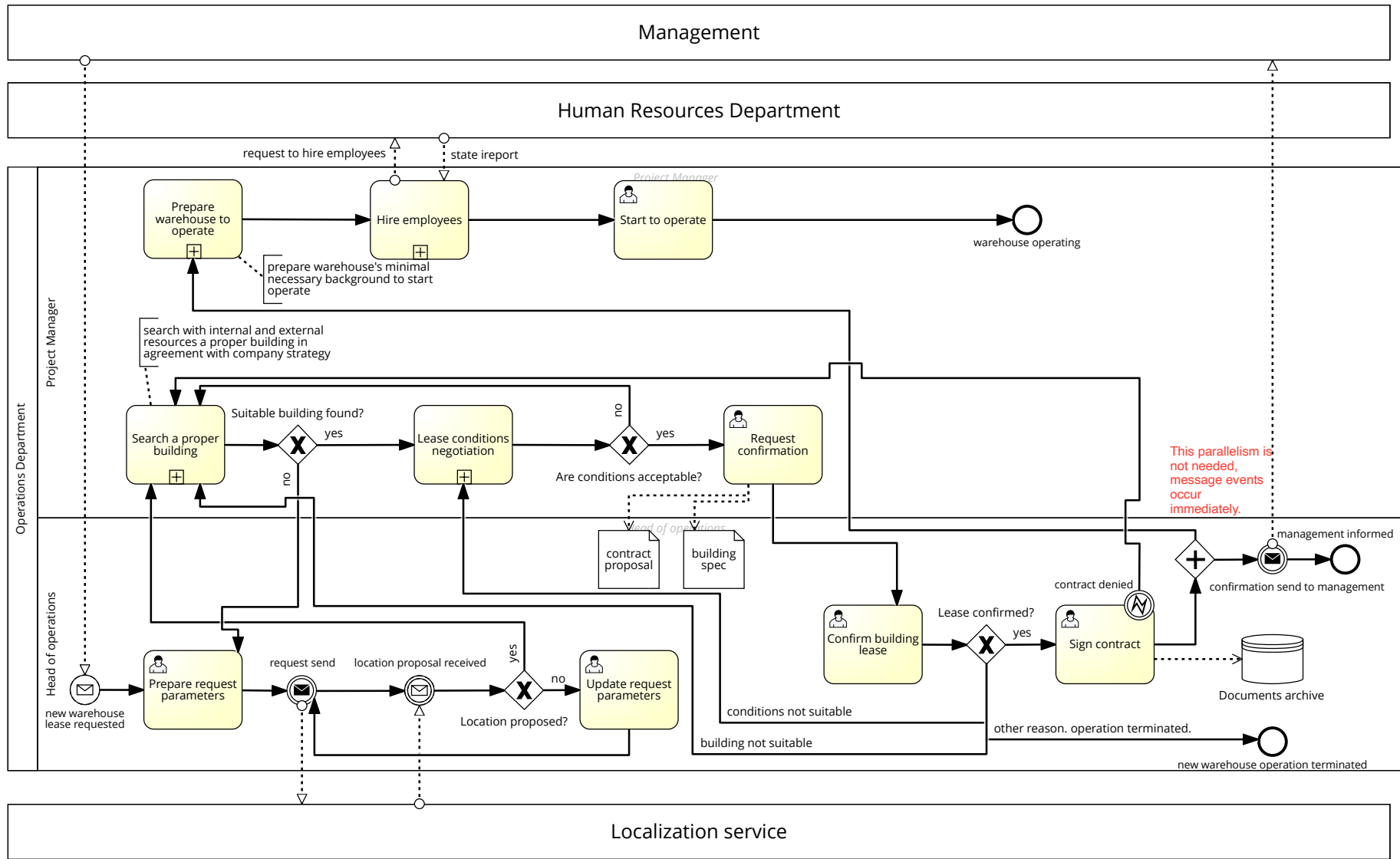
## 1 Brief summary

Management of the company decides to expand by creating a new warehouse. The responsible department for a lease of new warehouse is the Operation Department.

The first step is to find a suitable location, using the external service. The obtained tip for location is the entry for project manager who is trying to find a building/existing warehouse. If the search is not successful, they start to look in another location. After finding a suitable building, the proprietor is contacted about lease conditions negotiation.

If conditions are accepted by project manager, he is requesting confirmation from the head of the Operations Department. In case of confirmation, the head of department signs the contract and the project manager can continue with the steps leading to the opening of the warehouse.

# L2 New warehouse lease



The layout of the process does not support readability (especially ways how sequence flows overlap).

Result: 12