

Evening Drawing

Week 8: Portraits, moods and character

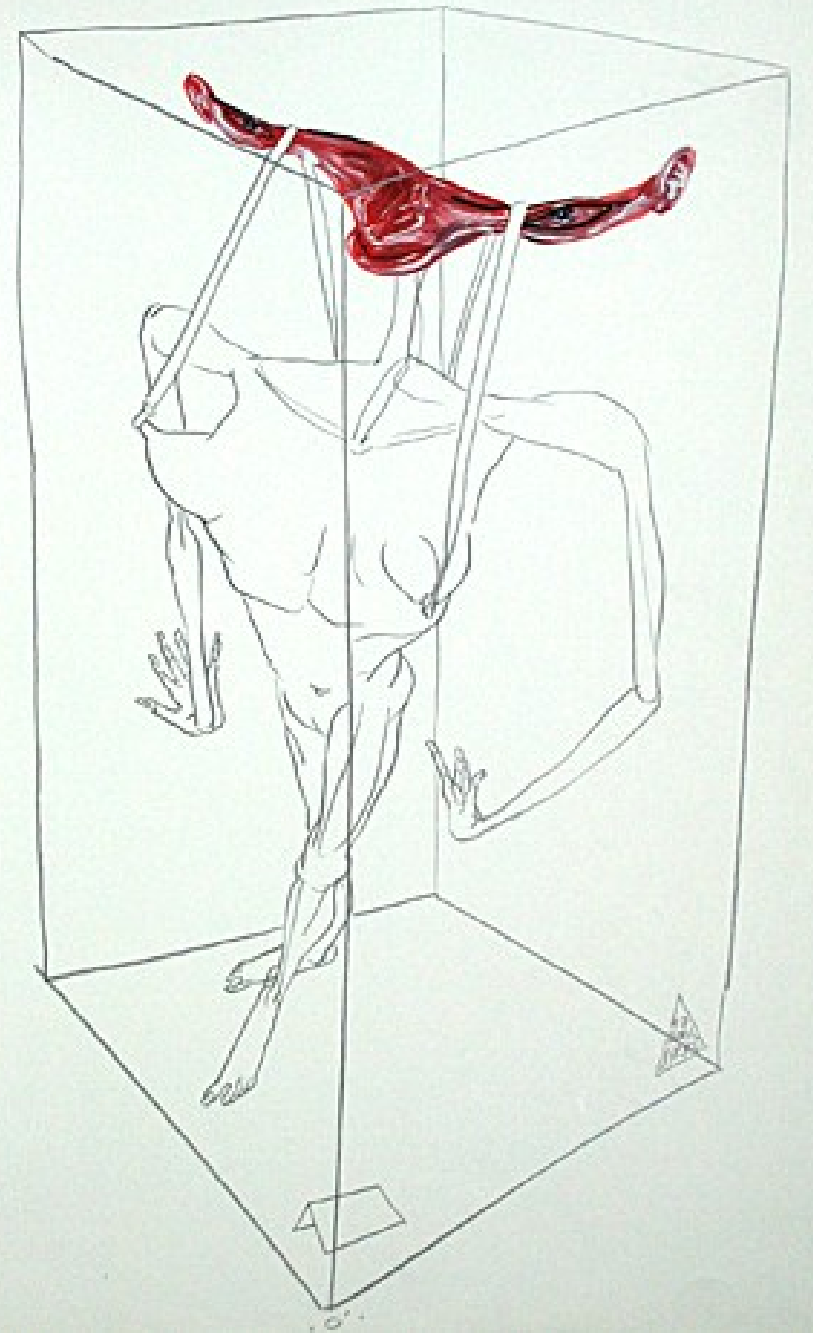
Helena Lukášová, Hana Pokojná

Not accurate but not a caricature

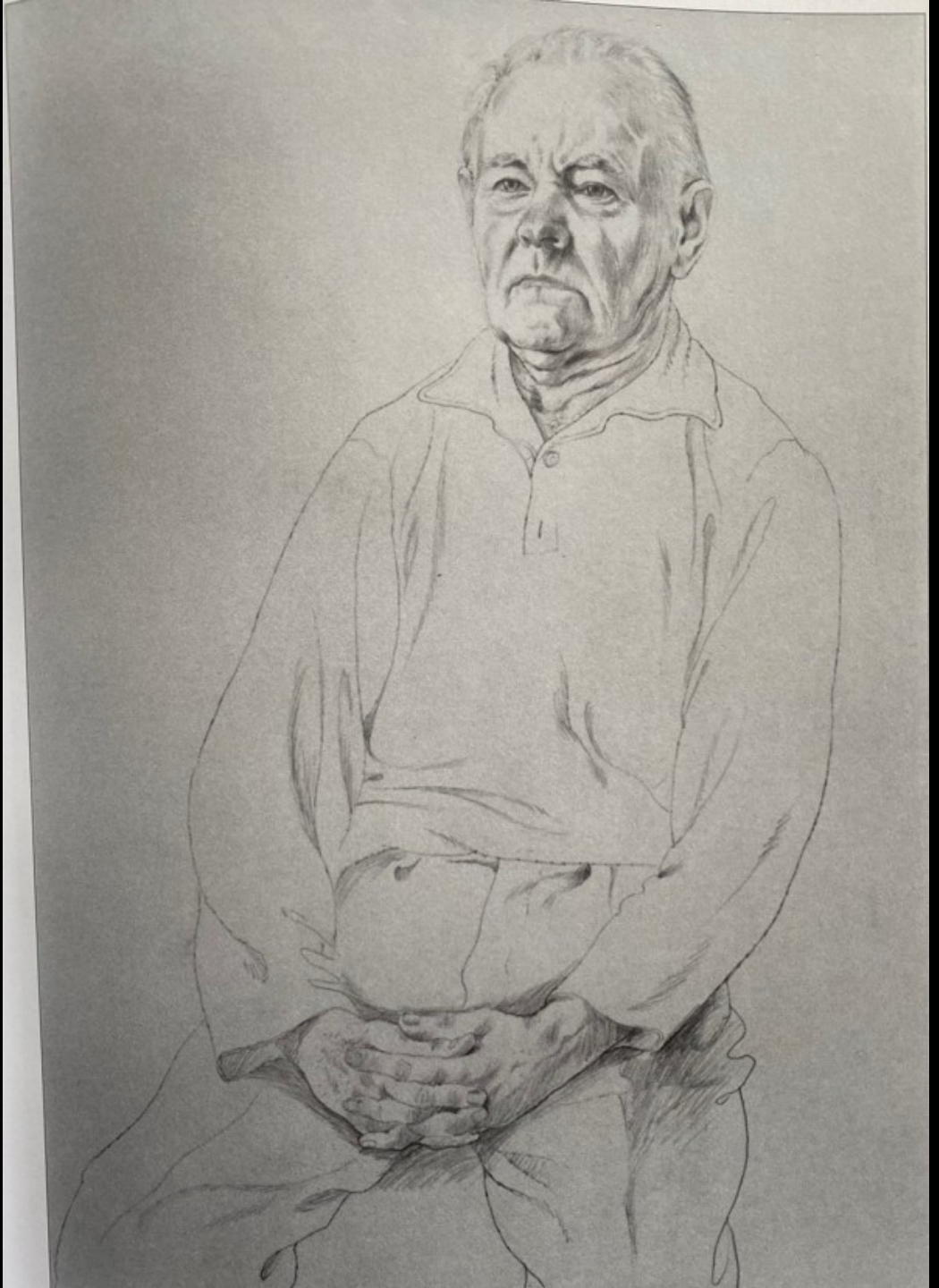
- You can create a portrait to capture the **character** of the person, or the **mood**
- Doesn't need to be super anatomically accurate
- Not a funny/ satirical caricature either

Emphasis on the important parts

- Boris Jirku

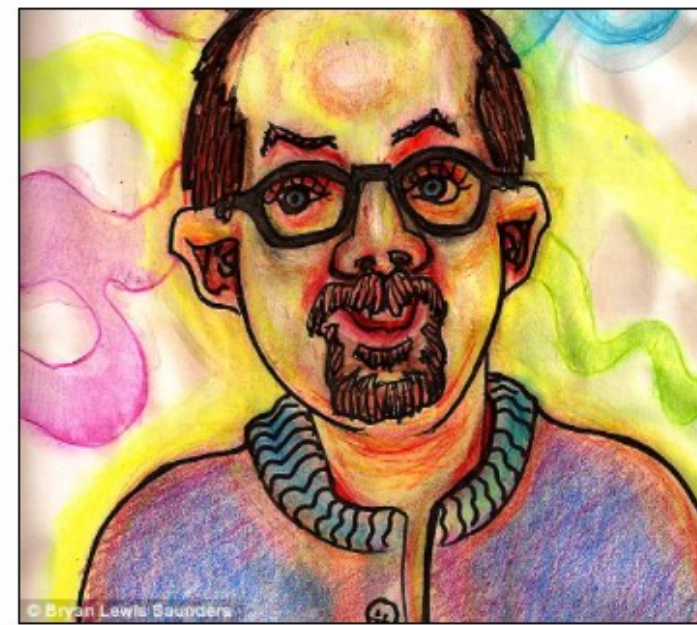


- Portrait of the father by J. Veskerna (1983)

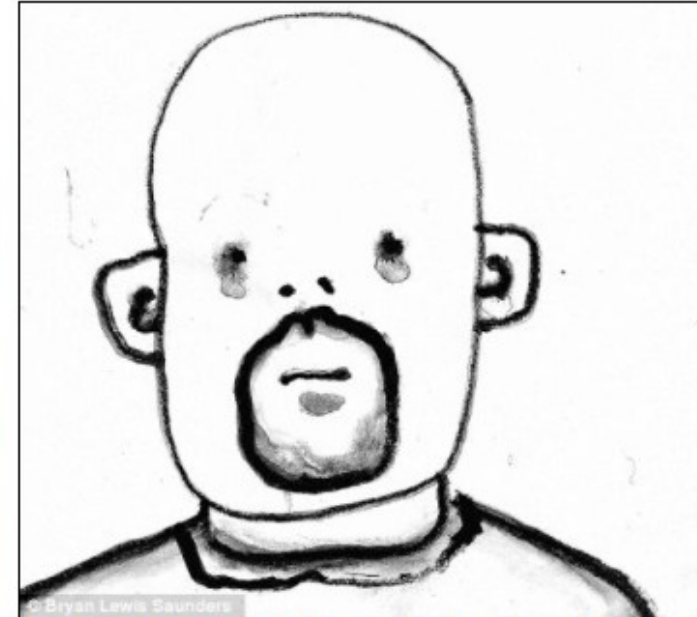


Different mental states

- Bryan Lewis drew a series of self-portraits on drugs

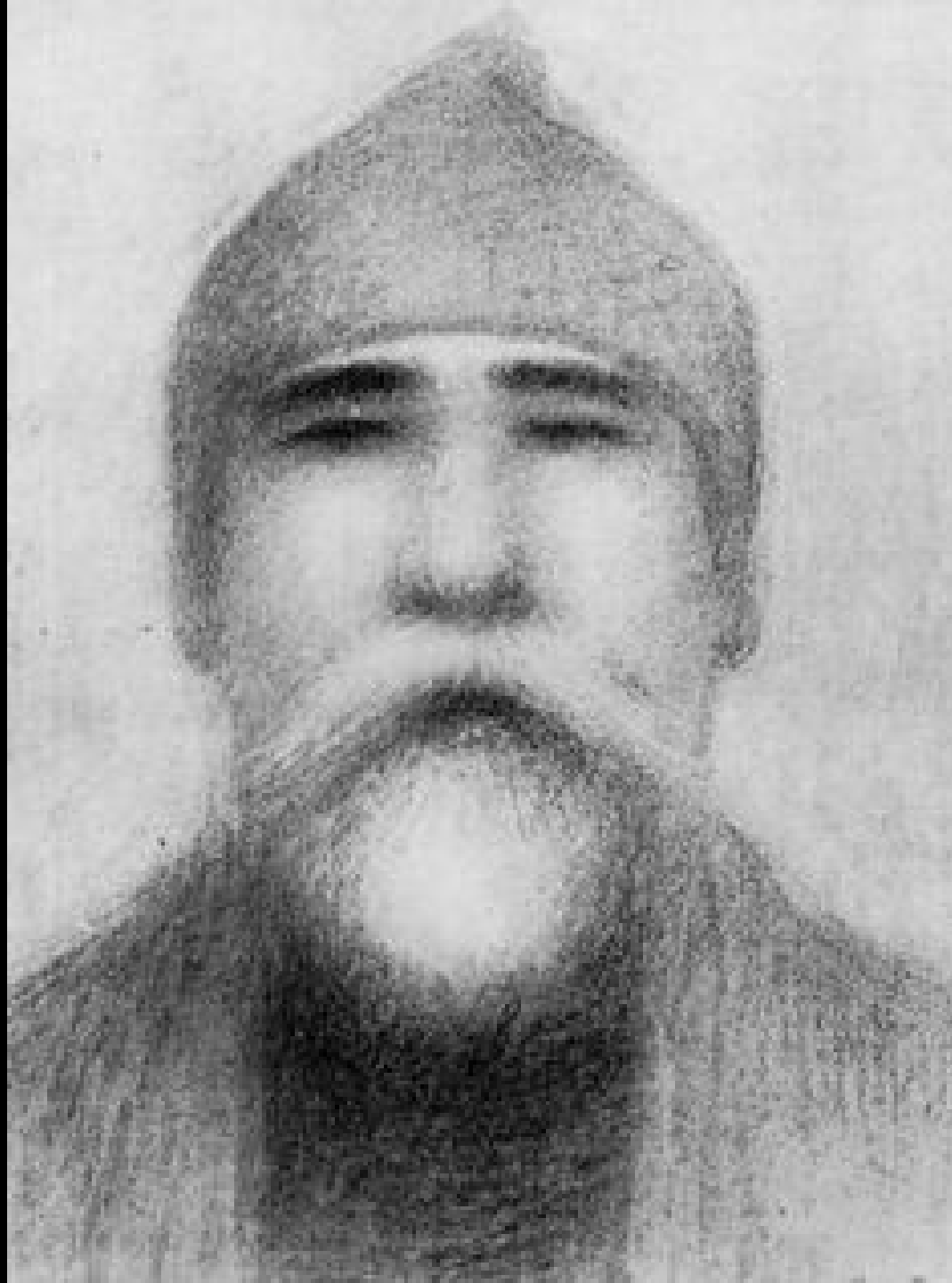


Inspired by Xanax is a psychedelic hipster-esq pastel image of Saunders donning a 'My Little Pony' t-shirt and beanie hat (left). 'Hash' emits a similar ecstasy, with brightly coloured swirls of crayon surrounding his balding head (right)



In 'Psilocybin Mushrooms (2 caps onset)' Saunders looks utterly thrilled, his eyes bulging and his mouth formed in an extatic grin (left). In '1 sm Glass of "real" Absinth' his raw outline is line-drawn in what looks like charcoal, smudges around his pin-dot eyes making him look like he is crying (right)

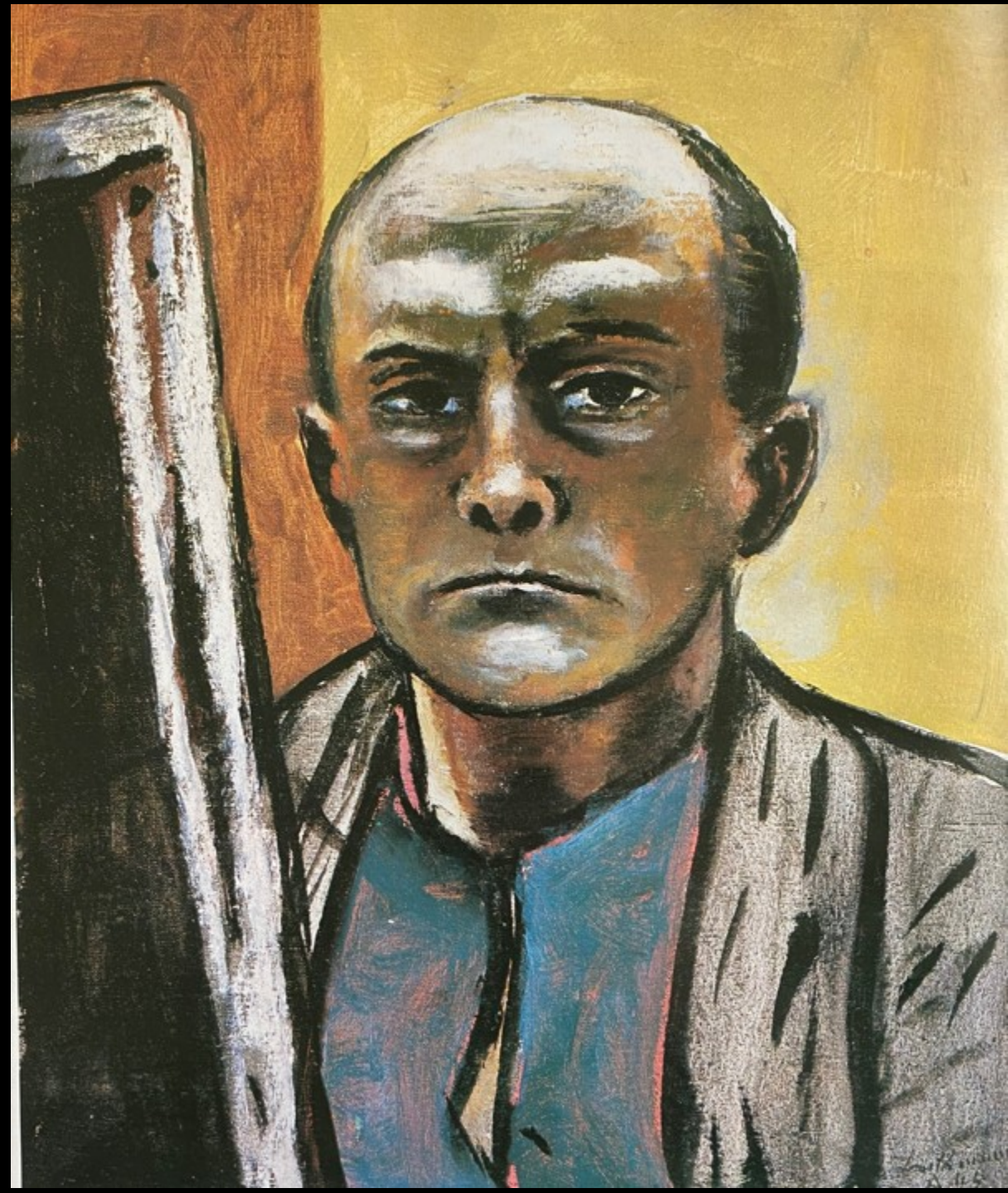
- Jan Zrzavý (1965)



- Albrech Durrer, portrait of mother



- Beckmann



Simplicity

- Caricature portrait of F Tuchy by Rada



Angles and negative spaces

F Tichy self-portrait

