

Modeling BPMN 2.0

Level 2



Lubomír Hruban



Seminar Overview

- Introduce BPMN Level 2 modeling and its palette
- Hands-on L2
- Modeling tips
- Top 10 L2 Mistakes
- L2 Homework 3 (*deadline April 12th at 4:00 PM*)
- L1 Results Consultation

Level 2 Modeling

- Also known as **analytical** modeling
- Created by **process specialists**
- Still concerned with **non-executable** processes
- Relies on information **visible** in the diagrams
- Adds **events**, additional **gateways**, **subprocess** nesting
- Often used for **exception handling**
- From activity order (L1) to **precise execution timing** (L2)

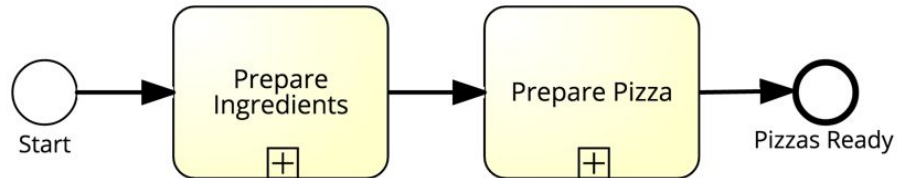
L2 Palette

Types	Start			Intermediate				End
	Top-Level	Event Sub-Process Interrupting	Event Sub-Process Non-Interrupting	Catching	Boundary Interrupting	Boundary Non-Interrupting	Throwing	
None								
Message								
Timer								
Error								
Escalation								
Cancel								
Compensation								
Conditional								
Link								
Signal								
Terminate								
Multiple								
Parallel Multiple								

- Intermediate events
- More specific types of tasks
 - User
 - Service
 - Send
 - Receive
 - Manual
 - Script
 - Business rule
 - Abstract
- Event and complex gateway
- Iterations in multiple instances

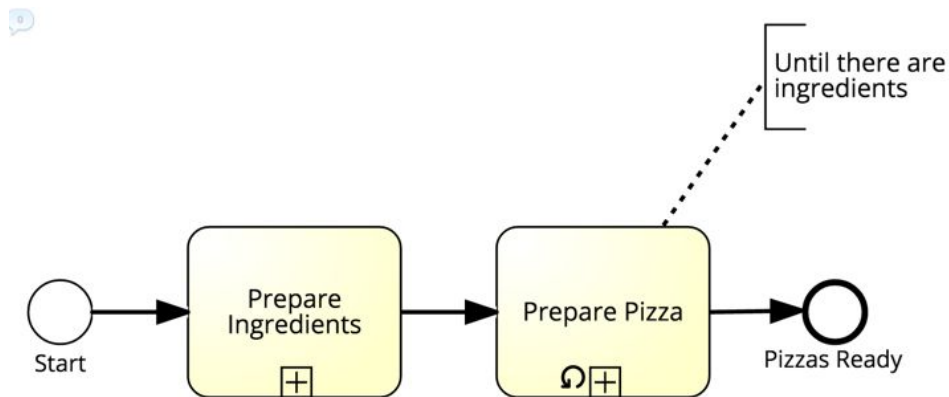
Hands-on #1

- We have ingredients for more Pizzas
- Update process so that more pizzas are prepared
- **Hint:** Pizzas are done sequentially



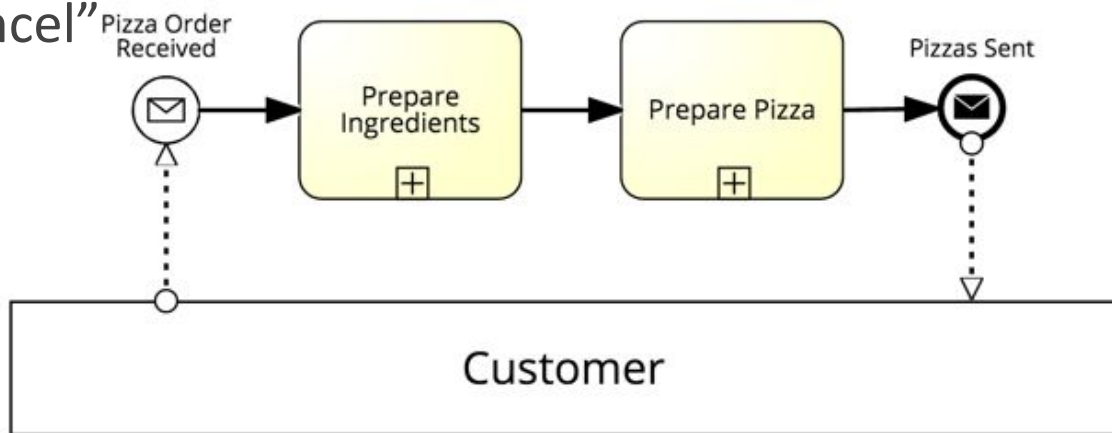
Hands-on #1: Solution

- We have ingredients for more Pizzas
- Update process so that more pizzas are prepared
- **Hint:** Pizzas are done sequentially

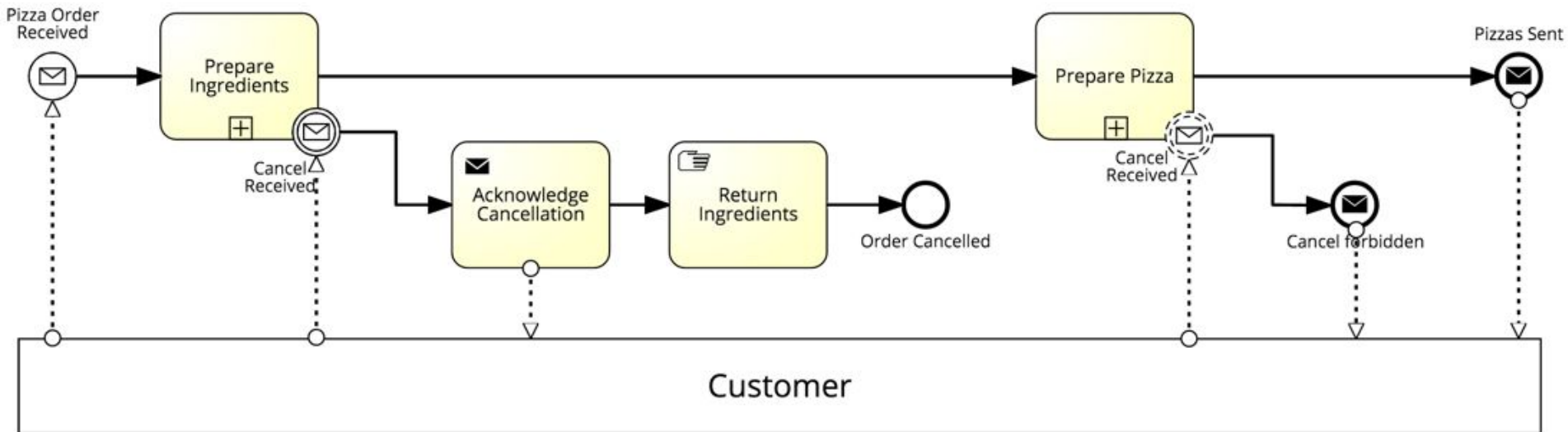


Hands-on #2

- While preparing ingredients customer can cancel order
 - If customer tries to cancel then the customer is acknowledged about cancellation and ingredients are returned to the fridge
- While preparing pizza customer cannot cancel
 - If customer tries to cancel then the customer is notified: “It is too late to cancel”



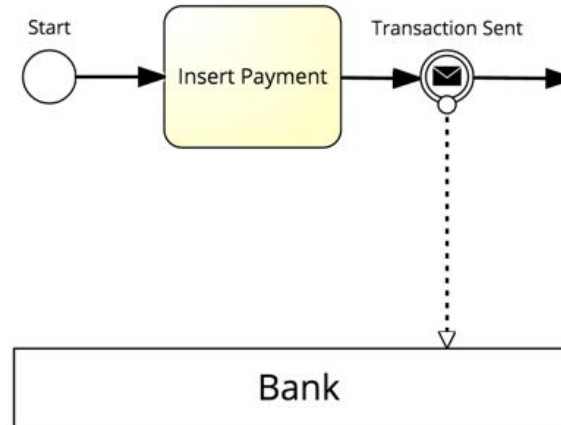
Hands-on #2: Solution



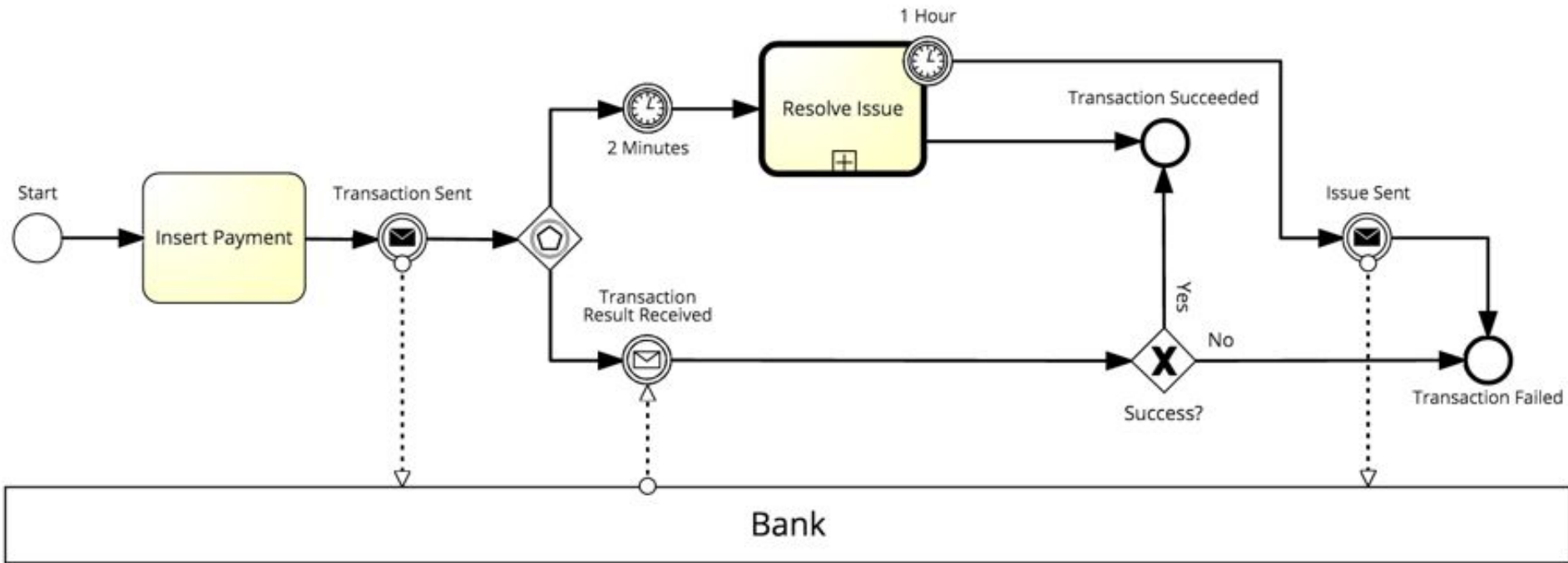
But it would be better to handle it using event subprocess.

Hands-on #3

- If bank does not respond in 2 minutes then standard activity for resolving issue is called
 - If issue is not resolved in 1 hour bank is notified and transaction fails
- If bank process transaction within 2 minutes then the transaction's result can be either success or failure



Hands-on #3: Solution



L2 Types of Tasks

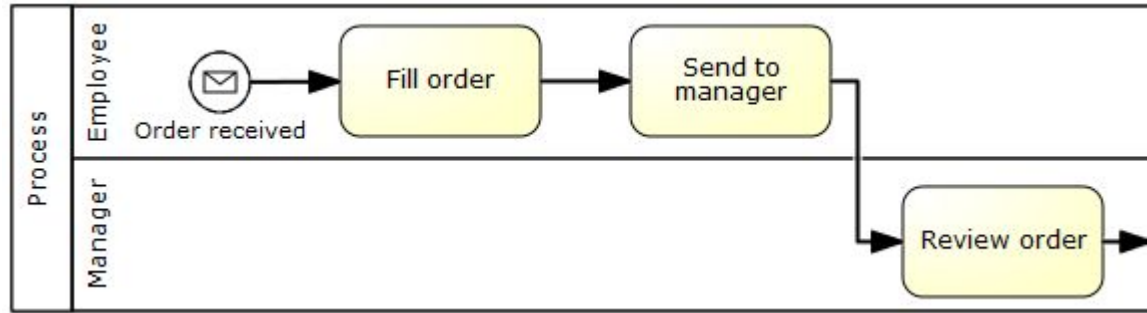
- **User:** A User Task is a typical “workflow” Task where a human performer performs the Task with the assistance of a software application and is scheduled through a task list manager of some sort.
- **Service:** A Service Task is a Task that uses some sort of service, which could be a Web service or an automated application.
- **Send:** A Send Task is a simple Task that is designed to send a Message to an external Participant (relative to the Process). Once the Message has been sent, the Task is completed.
- **Receive:** A Receive Task is a simple Task that is designed to wait for a Message to arrive from an external Participant (relative to the Process). Once the Message has been received, the Task is completed.
- **Manual:** A Manual Task is a Task that is expected to be performed without the aid of any business process execution engine or any application.
- **Script:** A Script Task is executed by a business process engine. The modeler or implementer defines a script in a language that the engine can interpret. When the Task is ready to start, the engine will execute the script. When the script is completed, the Task will also be completed.
- **Business rule:** A Business Rule Task provides a mechanism for the Process to provide input to a Business Rules Engine and to get the output of calculations that the Business Rules Engine might provide.
- **Abstract:** Not specified yet (in Signavio it is called None).

Message Events

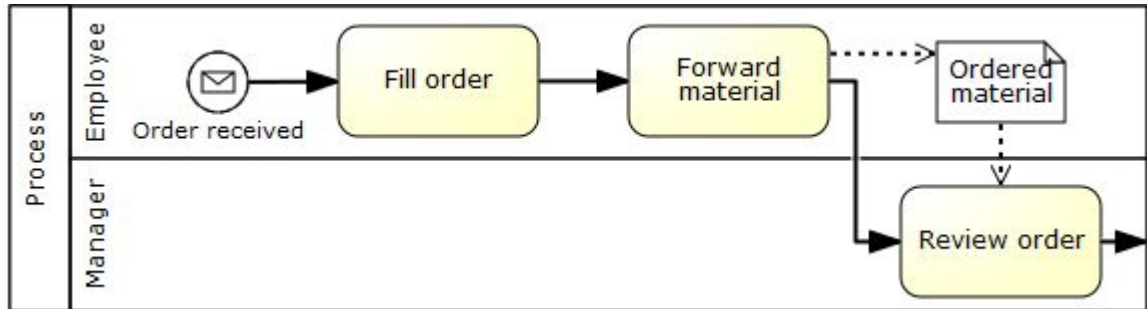
- Message is the content of communication between two different participants (not in the same process)
- Message can take any form
- Message flow is addressed to a particular process or process instance
- Use verbs like send or receive as a keywords

Hidden Message Flow

Avoid this:

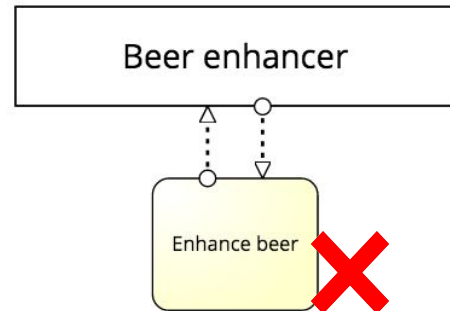
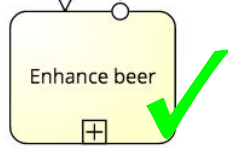
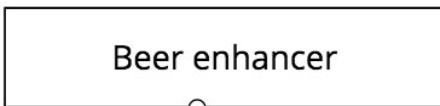
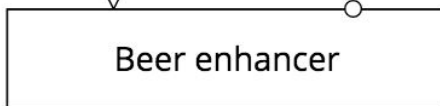
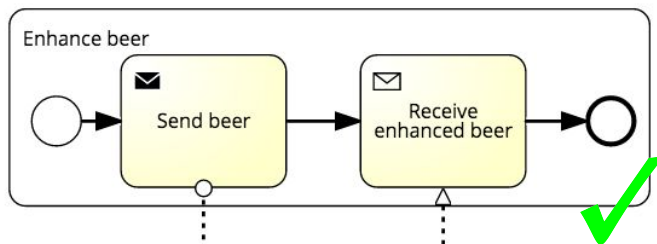
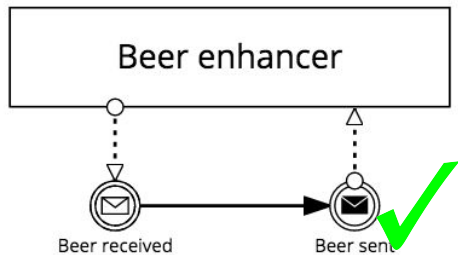
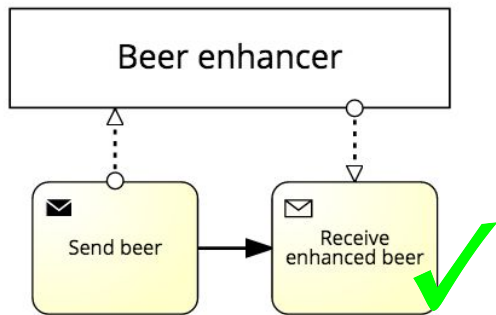


When handling is non-trivial activity:



L2 Messaging

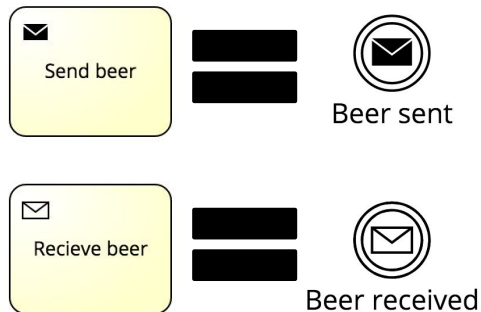
We should be more precise when modeling messaging in L2



A one task should not be responsible for multiple message flows. We should model it into detail using dedicated events or tasks.

Event or Task?

- In general, we can say that:



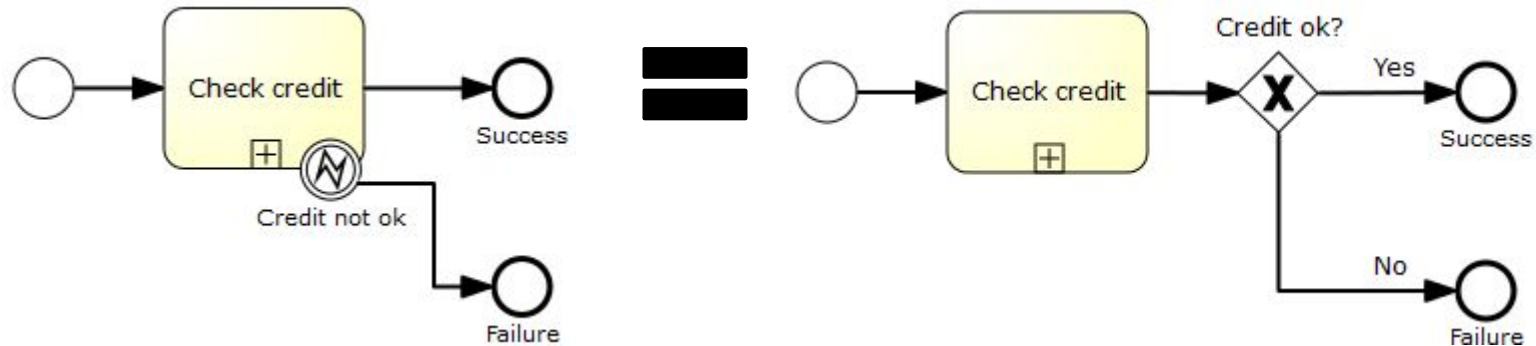
- But there are some differences:
 - Events happen immediately when triggered but tasks take time to be executed (we can emphasize that it activity takes more effort when we use task)
 - Tasks can have boundary events (events can't, they are atomic)

Signal Events

- Signal is broadcast and it is loosely coupled
- Can be used within pool, between processes and process instances
- In diagram there is no message flow between signals (only naming emphasizes relationship)
- Signal start event means that process is subscribed to another process or processes

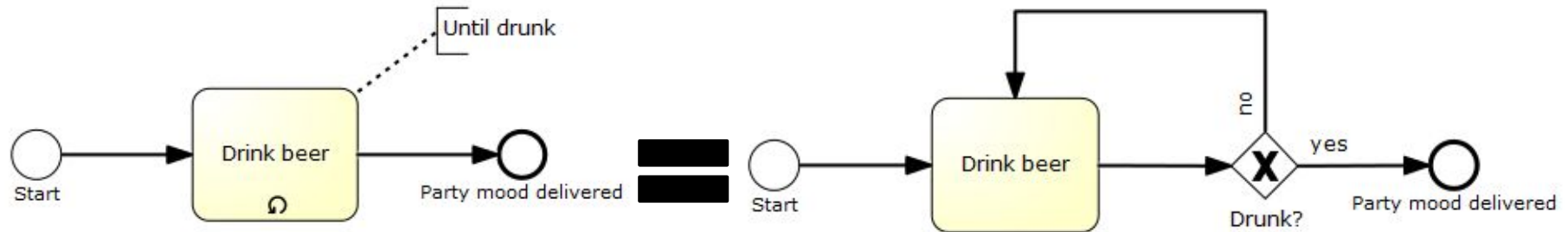
Error Events

- Only as **error end event** or **interrupting boundary error event**
- Can be usually transform with usage of XOR gateway:

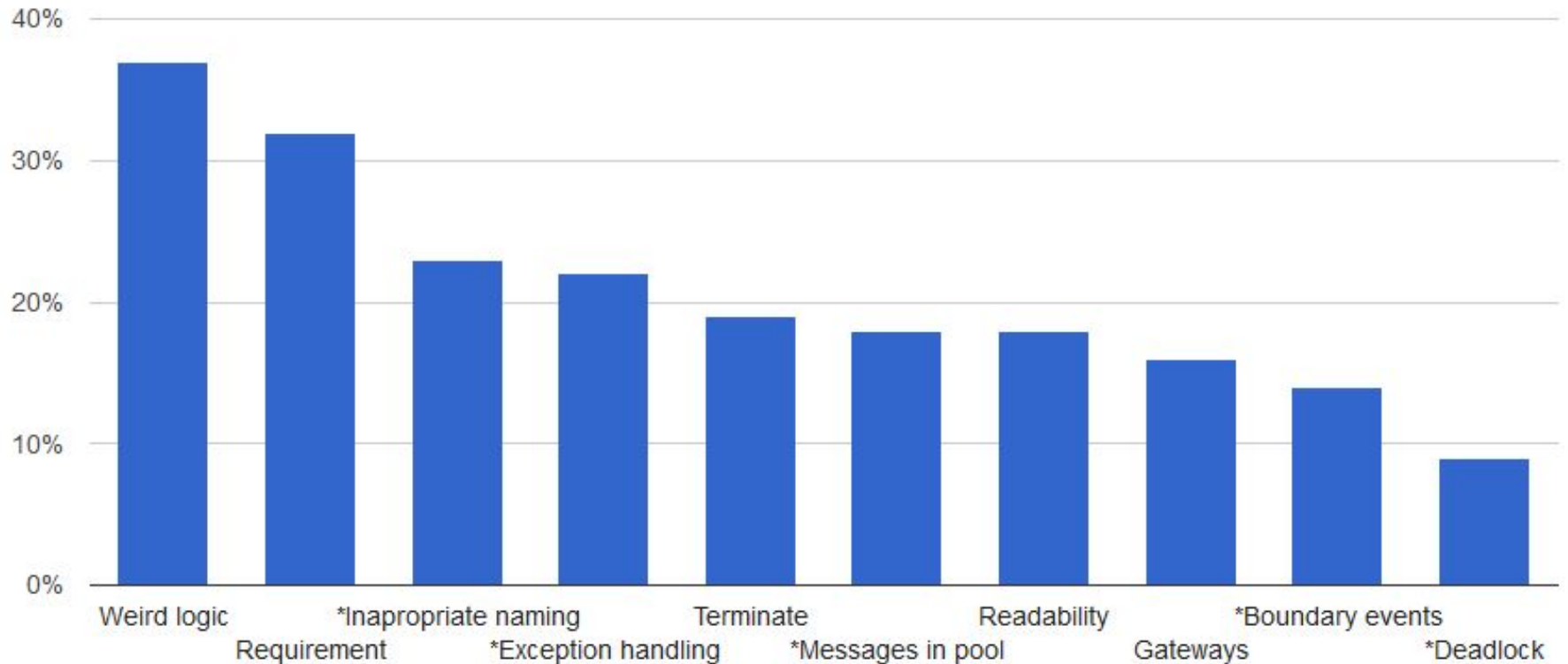


**It is totally equal only if we can change internally Check credit*

Loop Transformation

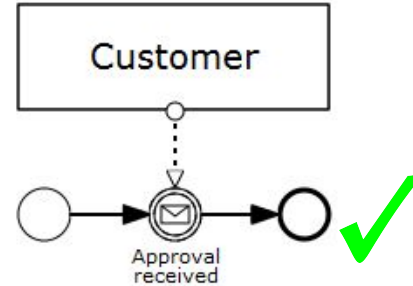
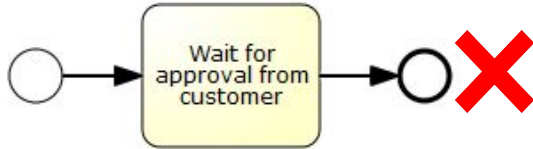


Top 10 Mistakes

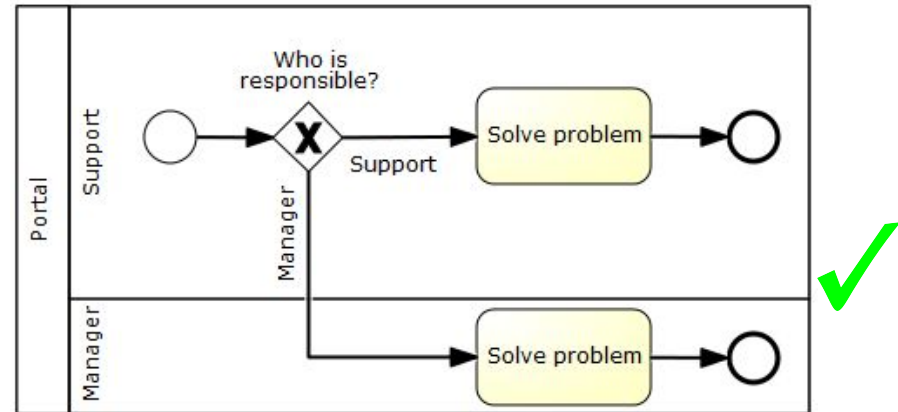
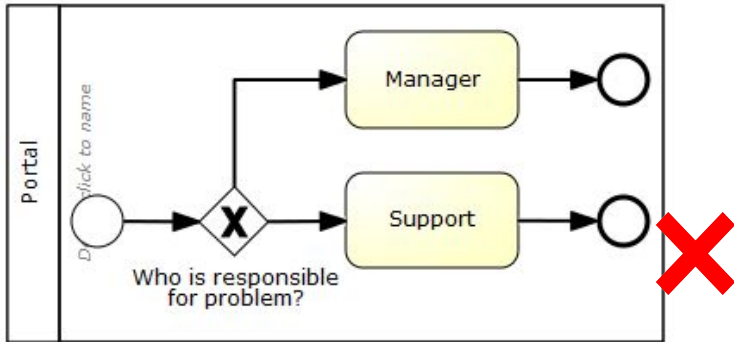


Inappropriate Naming

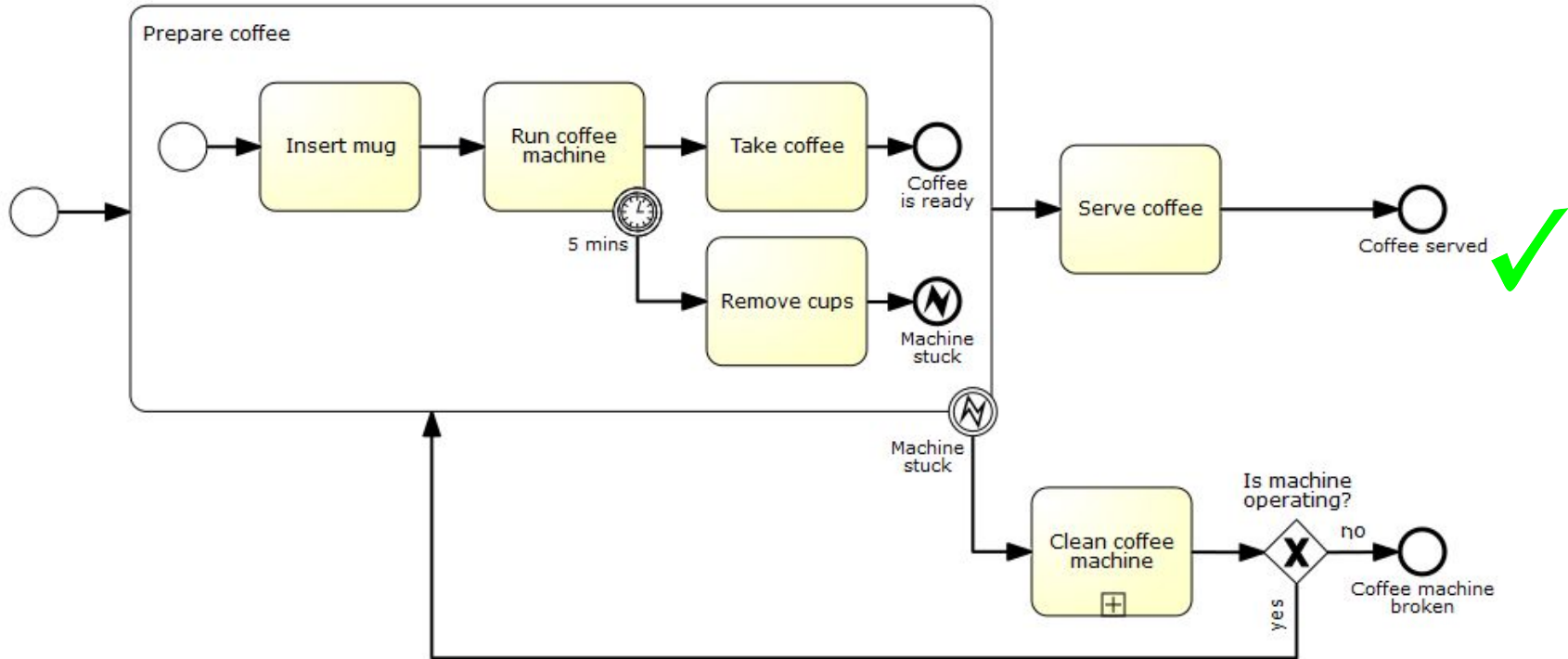
Here is a task used instead of an event.
Clumsy name of the task signals us that we are using wrong modeling concept.



Lanes should express the role which is responsible for performing task.
Not the name of task itself.

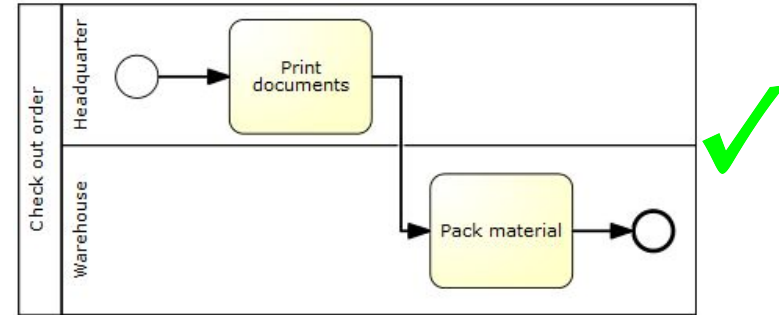
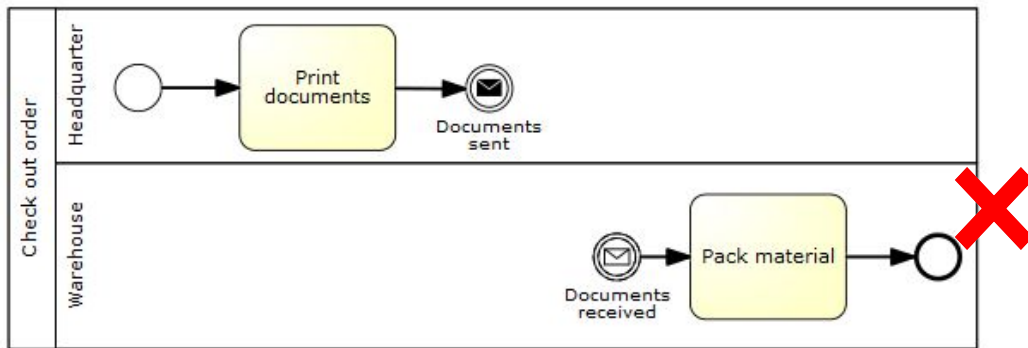
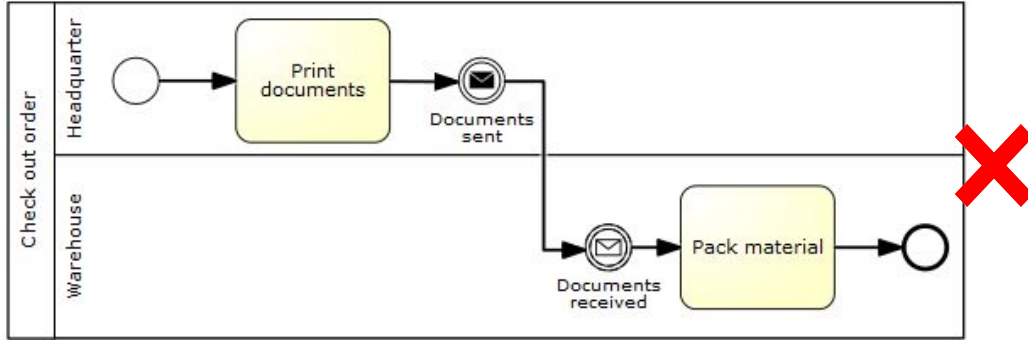


Exception Handling



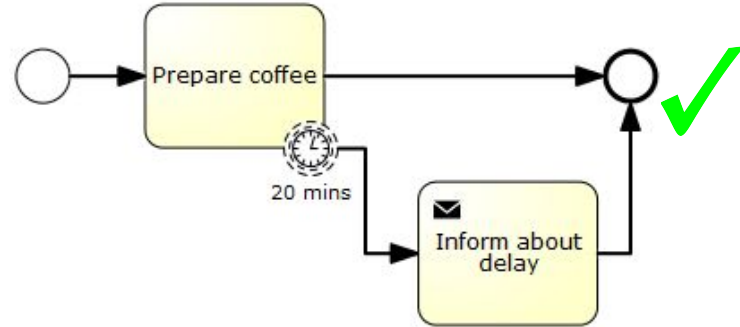
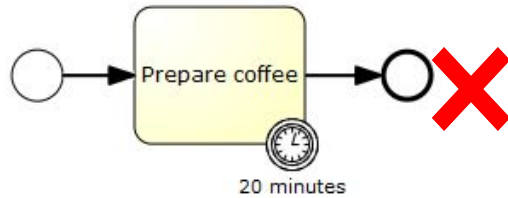
*The process should handle exception appropriately
(try to resolve exception, or terminate properly other tokens and inform other processes if necessary).*

Messages in Pool

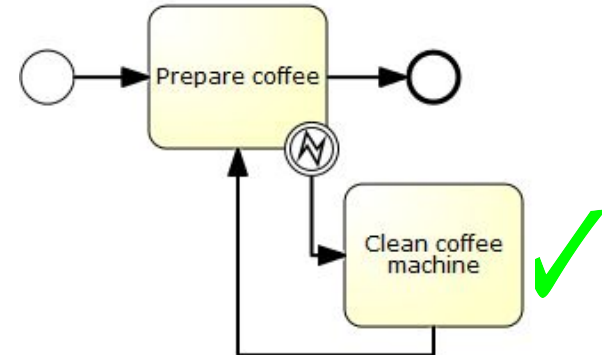
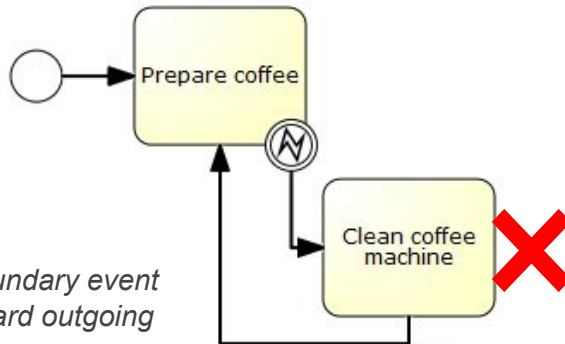


Variants of hidden message flow.

Boundary Events

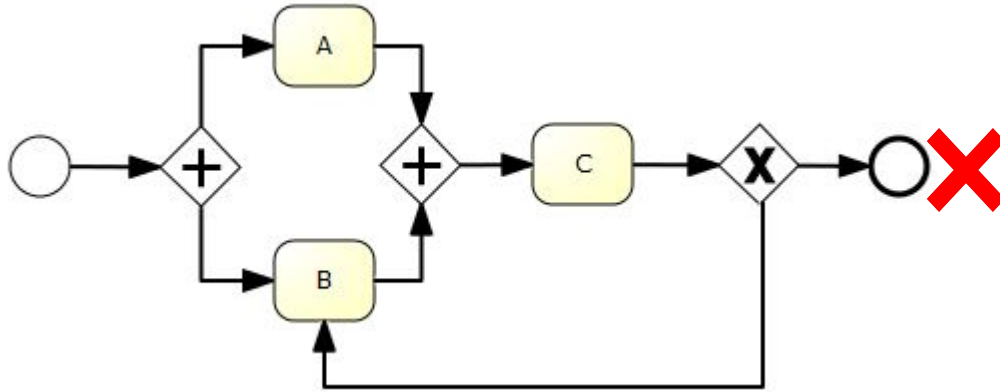


Timer does not say how much time it takes to finish task. It just says what should be done when timebox expires. Therefore, there has to be outgoing sequence flow.



Even task with boundary event has to have standard outgoing sequence flow.

Deadlock



If after XOR gateway token flows to B then parallel gateway will wait forever for token from A.

Summary

- Understand purpose and usage of BPMN L2
- Practiced L2
- More familiar with the most common L2 elements
- Review common mistakes in L2

L2 Assignment

- Create one **business process** using BPMN L2 (it is preferred when you extend your L1 process):
 - 8+ activities
 - 4+ gateways, 2 different types
 - 3+ intermediate events (2+ different types)
 - 1+ data object
 - 2+ text annotations
 - 2+ pools, 1 as „blackbox/collapsed pool“, 2+ roles (swimlanes)
 - 1+ exception and appropriate handling
 - Brief summary of the process (2+ sentences)
- Submit diagram as PDF to IS MUNI to folder "Homework 3" as <surname>_bpmn.png (**before 12th April 4:00 PM**)

Thank you for your attention!

