

# Technical Info

FI:PV296 The Job Market in IT

Marek Grác  
Red Hat Research  
mgrac@redhat.com

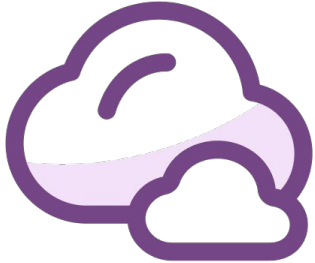
# The End

- We will work on technical issues with homework descriptions
- We will work on technical issues with local hardware
- We will work on adding more interactivity
- Feedback is welcomed - email, discord, IS, in person
  
- Majority of you will receive credits in the following week

# The End

- We will work on technical issues with homework descriptions
- We will work on technical issues with local hardware
- We will work on adding more interactivity
- Feedback is welcomed - email, discord, IS, in person
  
- Homeworks & Large Language Models
  - Transparency
  - “... Za všech okolností otevřeně deklarujte, resp. citujte využití nástrojů AI, a to především v písemných pracích. “  
(<https://www.muni.cz/o-univerzite/uredni-deska/stanovisko-k-vyuzivani-ai>)

slido



## Feedback on PV296

① Click **Present with Slido** or install our [Chrome extension](#) to activate this poll while presenting.

**THANKS**



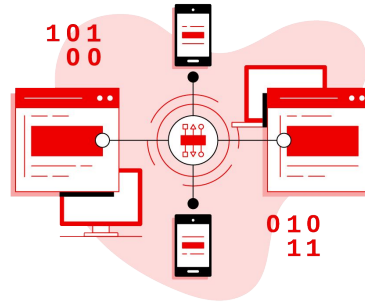
# Red Hat

## Sneak Peek:

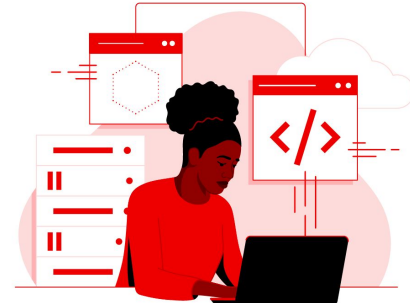
### Courses at FI MUNI

### Autumn semester 2024

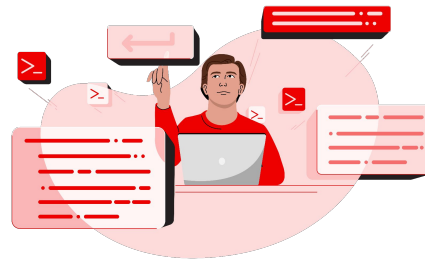
- ▶ Tentative list of courses taught by Red Hat engineers in the upcoming semester
- ▶ All courses are single seminar group (20 places)
- ▶ Registration starts 3. 6. 2024



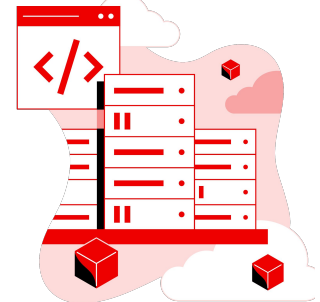
PV278 Vývoj intuitivních uživatelských rozhraní



PB173 Programování v C++ a frameworku Qt



PB173 Coding in Go



PB173 Kernel Development Learning Pipeline



# Red Hat Theses

- ▶ Red Hat welcomes students interested to participate on final theses (Bc/Mgr/Ing) with us
- ▶ From 2012, we have participated in over 450 theses (>350 at FI MUNI)
- ▶ Website with open topics will be available from Autumn 2024
  - In the meantime, feel free to come up with your own topic idea (related to open source, linux or anything from our portfolio)
- ▶ If interested, send your idea to [thesis@redhat.com](mailto:thesis@redhat.com)



# Self promo

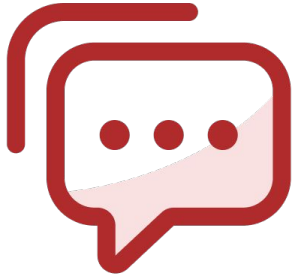
- Thesis mentor - Bc. / Mgr. / Ph.D.
  - Applied ML with focus on text processing (including LLM)
  - Manipulation with encrypted data without their revealing (FHE, MPC)
    - e.g. ML with private data on public clouds
  - Xenolinguistics - Science/Art of decoding languages
    - Human - Alien; Human - Animal; Animal - Animal; Tree - Tree
    - and tools applicable also in other domains (e.g. medicine)



# Self promo

- Thesis mentor - Bc. / Mgr. / Ph.D.
  - Applied ML with focus on text processing (including LLM)
  - Manipulation with encrypted data without their revealing (FHE, MPC)
    - e.g. ML with private data on public clouds
  - Xenolinguistics - Science/Art of decoding languages
    - Human - Alien; Human - Animal; Animal - Animal; Tree - Tree
    - and tools applicable also in other domains (e.g. medicine)
- Courses at Masaryk University
  - Applied Machine Learning (FF); req. python basics; Thu S505 (FI)
  - Large Language Models (CORE)
- Startup mentoring (~ internship)
  - B2B; data & ML; web & mobile apps

slido



## Audience Q&A Session

① Click **Present with Slido** or install our [Chrome extension](#) to show live Q&A while presenting.