

PA165 - Micromanagement

RNDr. Jan Pavlovič, Ph.D

20. října 2009

Obsah přednášky

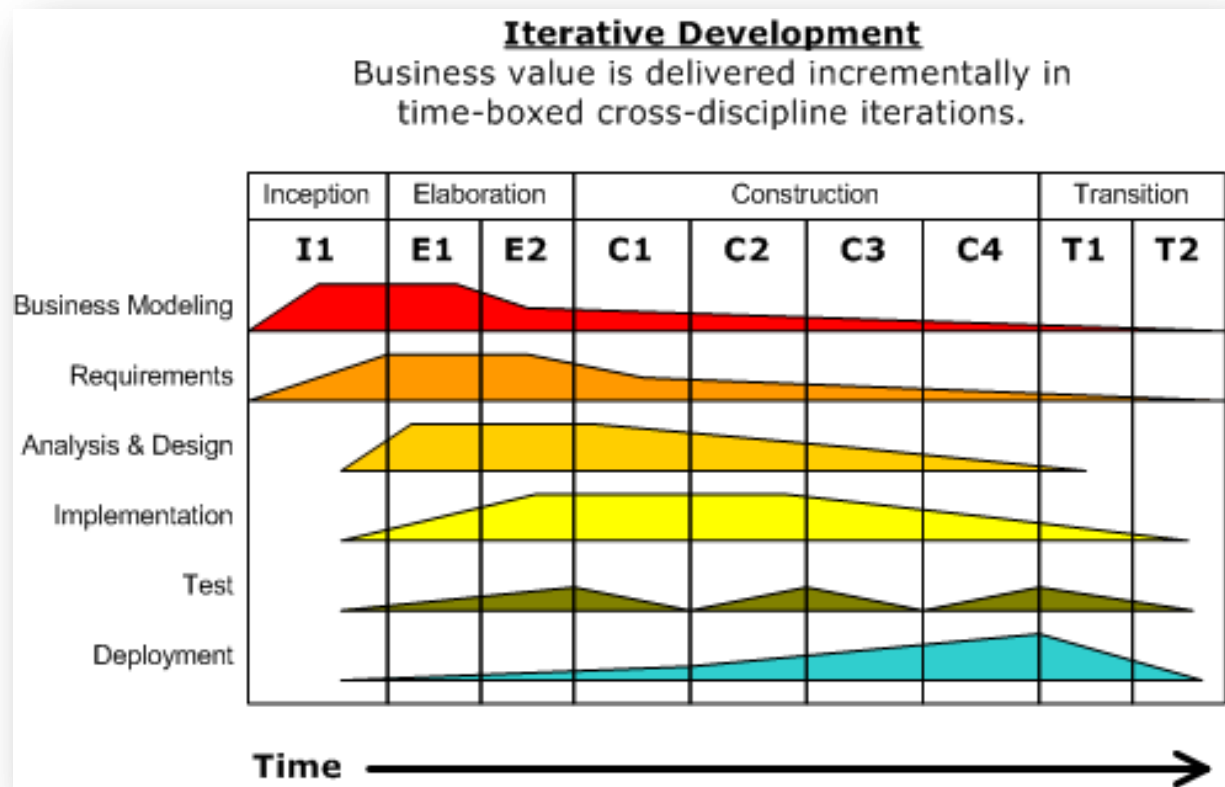
- Vymezení problematiky
- Vývojové procesy
- Role v týmu
- Tooling change managementu
- Work itemy
- Traceability

Základní pohled na Micromanagement

- Definice
- Managerská disciplína
- Vztah k project managementu
- Vztak ke quality managenetu

Vývojový proces softwaru

- Rational Unified Process
- OpenUP



PA165 – vývojový proces

<http://kore.fi.muni.cz:5080/pa165/>

The screenshot displays the Rational Method Composer interface. On the left, a tree view shows the project structure under 'PA165 Project Life Cycle CC'. The main area shows the 'Delivery Process: PA165 životní cyklus projektu (PA165)' with a description: 'Životní cyklus projektů PA165. Je uzpůsoben pro podporu malých agilních studentských'. Below this, there are tabs for 'Description', 'Work Breakdown Structure', 'Team Allocation', and 'Work Product Usage'. The 'Work Breakdown' tab is active, showing a table with the following data:

Breakdown Element	Steps	Index	Predecessors	Model Info	Type	Planned	Repeatable
Zahájení projektu	1				Phase	✓	
Analýza a Plánování	14				Phase	✓	
Vývoj [1..n]	23				Iteration	✓	✓
Ukončení projektu	36				Phase	✓	

Role v týmu

- Rozdělení práce
 - Odpovědnosti
 - Pravomoce
- Zákazník
- Project Manager
- Team Leader
- Developer

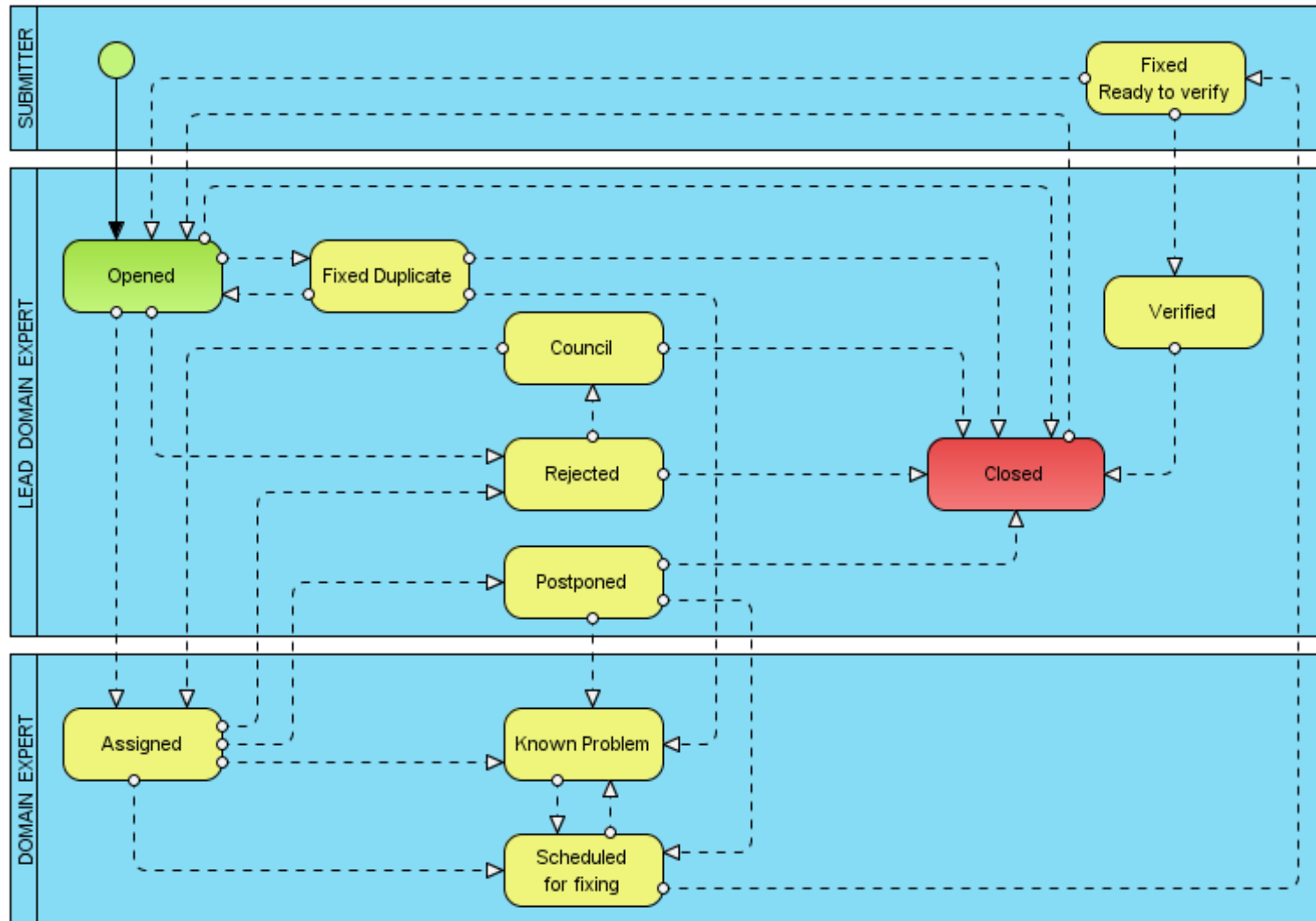
Nástroje pro Micromanagement

- Nástroje pro teamovou spolupráci
 - Change management tools
- Opensource
 - Trac
- Commercial
 - Atlassian JIRA
 - Microsoft Team Foundation Server
 - IBM Rational Team Concert

Rozdělení v CM

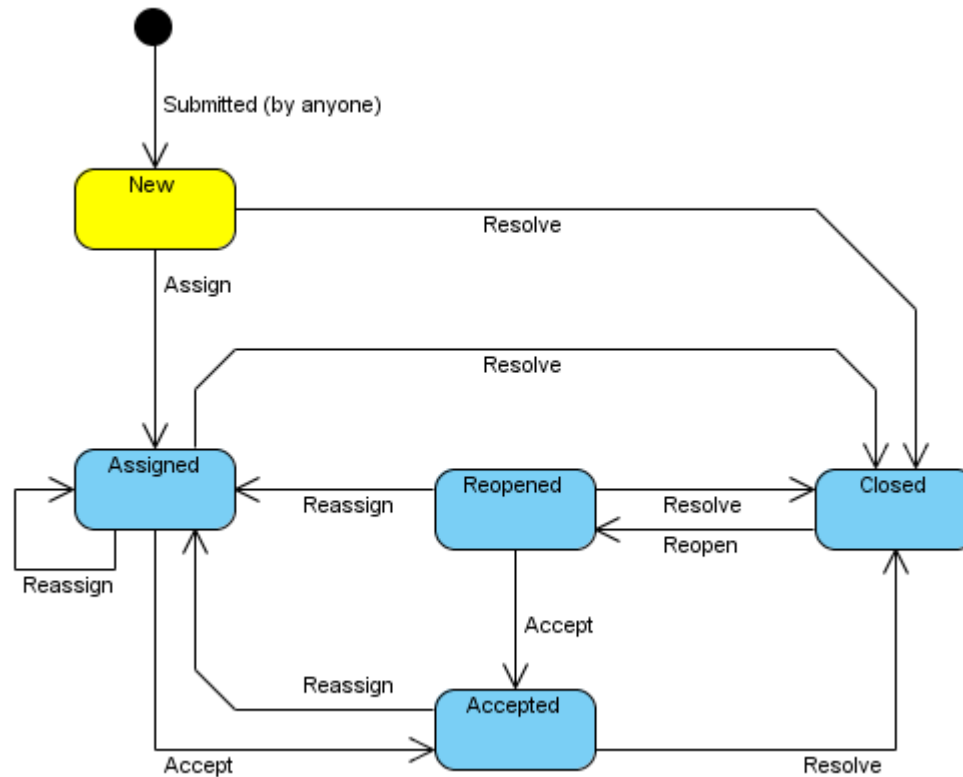
- Issue
- Bug
- Enhancement
- Requirement
- Task

Životní cyklus „Issue“



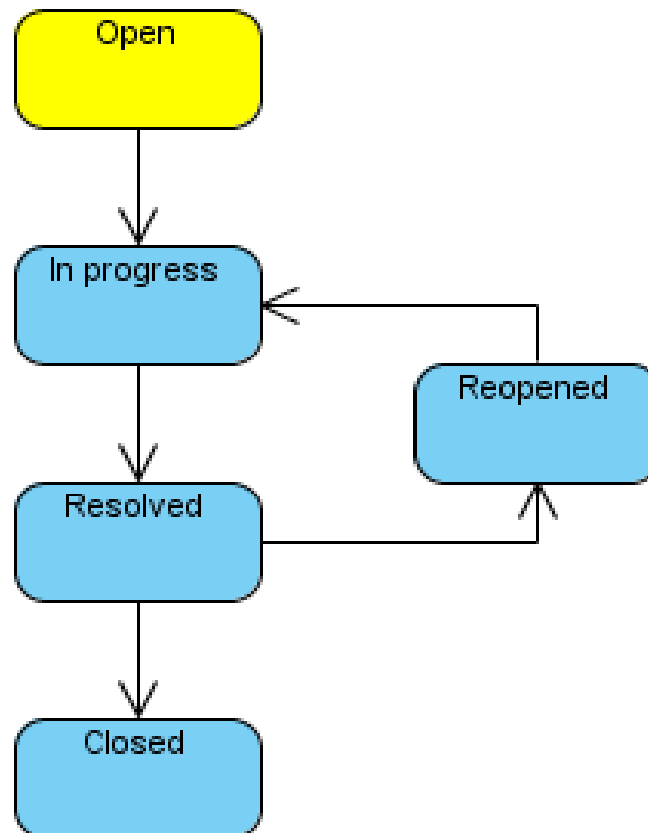
Autor: J. Janák

Trac - Lifecycle



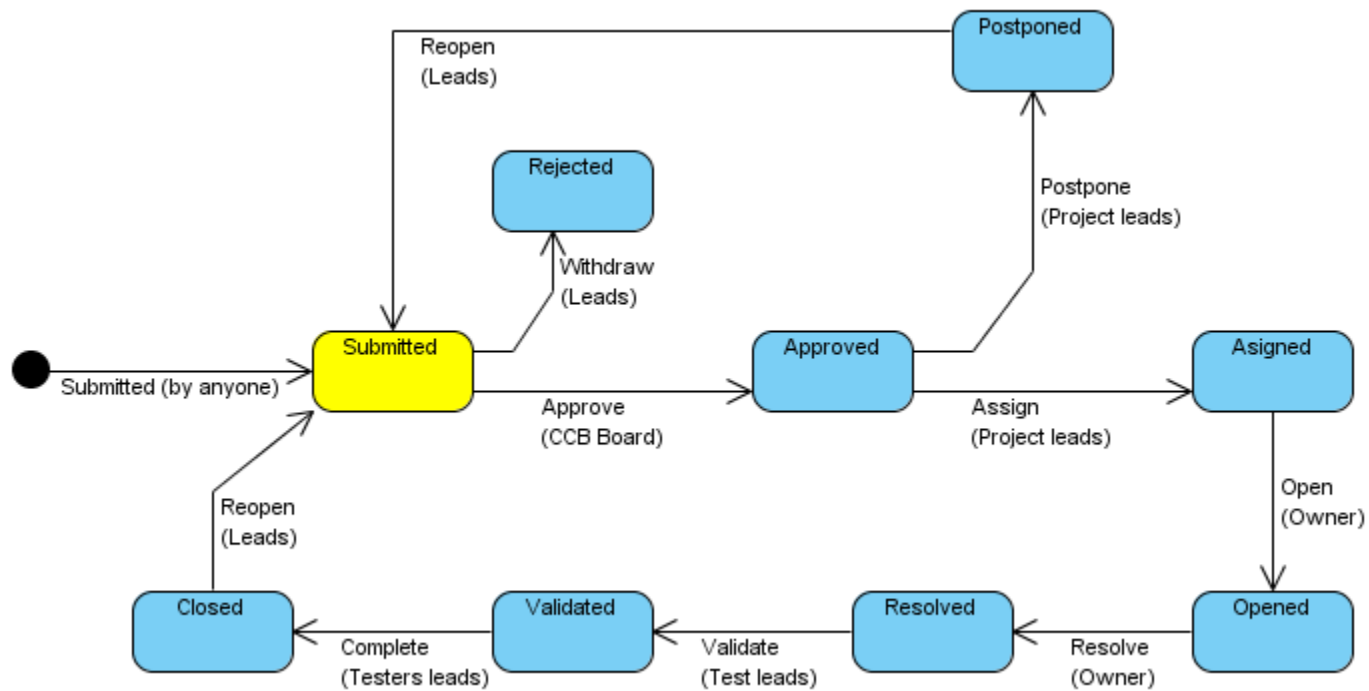
Autor: J. Janák

Ticket Lifecycle



Autor: J. Janák

IBM ClearCase Lifecycle



Autor: J. Janák

Struktura ticketu (Work item)

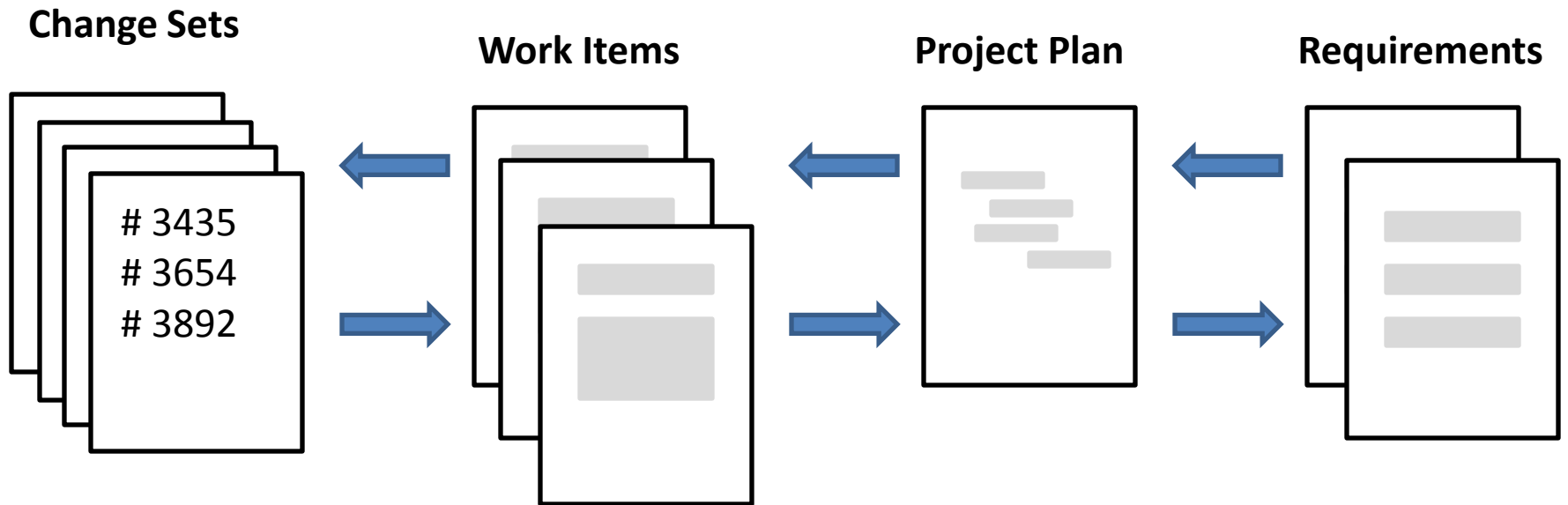
- Důležité je správně vyplňovat workitemy
 - Základní vstup pro project management
- Summary
- Time estimate/spent
- Work products

The screenshot shows a JIRA ticket interface for 'Defect 45'. The ticket title is 'JUnit 4 not really backward comp.'. The status is 'Resolved' and the resolution is 'Fixed'. The ticket is categorized as a 'Defect' with a 'Normal' severity, filed against 'JUnit'. It was created by 'Rick Yuen' on 'Mar 14, 2009 3:03 AM'. The ticket is assigned to 'Bill Cassavelli' and has a priority of 'High'. The planned for version is '4.4 s1' with an estimate of '2 d'. The due date is 'None' and the resolution date is 'Jun 10, 2009 2:39 PM', resolved by 'Marcel'. The description states: 'JUnit 4 claims to be backward compatible. My understanding of this is this means that JUnit 3 tests and suites can be executed without any changes. However, running a class with a static suite() method is no longer supported: the class needs to be modified and a @RunWith(@Suite) annotation has to be added. We had several bugs/requests for the Eclipse JUnit launcher in this area.' The discussion section shows four comments: 1. Rick Yuen (Mar 14, 2009, 3:06 AM) stating the need for a @RunWith annotation; 2. Bill Cassavelli (Mar 14, 2009, 5:52 AM) stating the issue is fixed; 3. Markus Kent (Jun 23, 2009, 9:25 AM) adding an attachment; 4. Markus Kent (Jun 23, 2009, 9:26 AM) referring to work item 26. The quick information section shows 2 subscribers (MK, RY), 1 attachment, 42 related items, 1 mention, and 1 approval/review for version 4.4.S1.

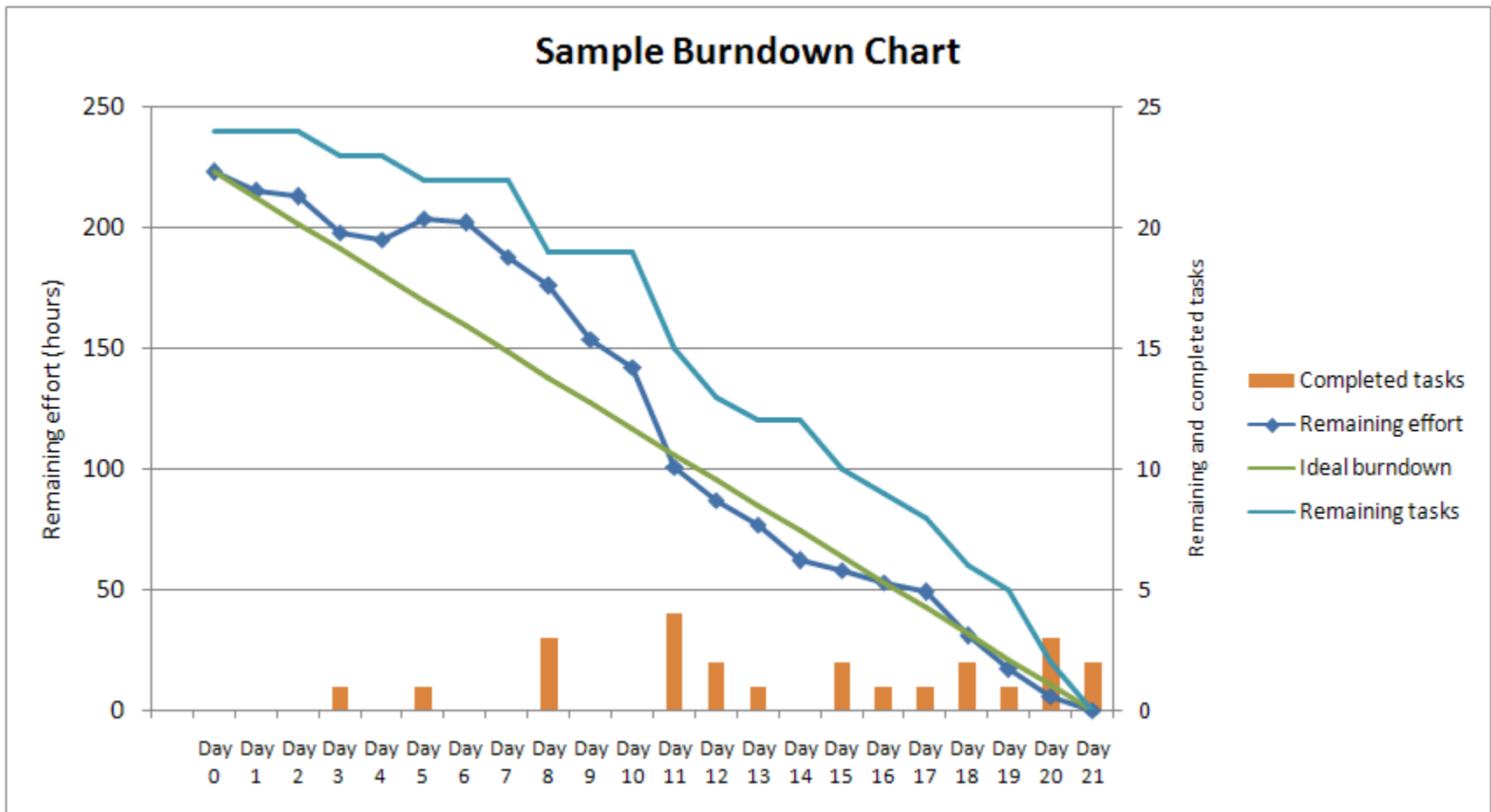
S.M.A.R.T.E.R

- **Specific**
- **Measurable**
- **Accountable**
- **Realistic**
- **Timed**
- **Exciting**
- **Recorded**

Traceability



Burndown Chart



Rekapitulace

- Vymezení problematiky
- Vývojové procesy
- Role v týmu
- Tooling change managementu
- Work itemy
- Traceability