

Systemové programování Windows

Služby

Obsah

- ▶ Prohlížení služeb
- ▶ Instalace
- ▶ Nutné kroky



Prohlížení služeb

- ▶ Services.msc



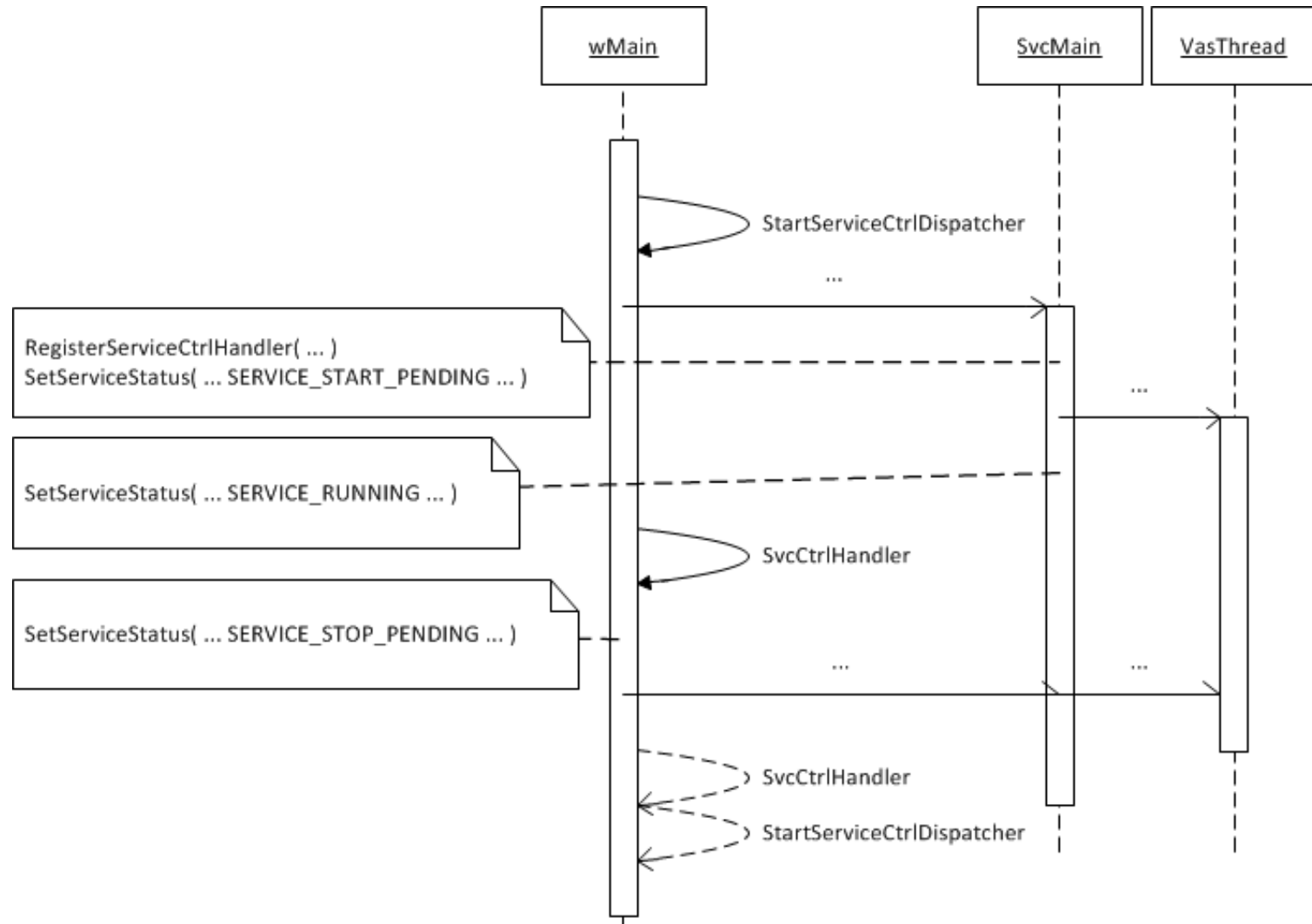
Instalace

- ▶ OpenSCManager

- ▶ SC_HANDLE WINAPI CreateService(
 In SC_HANDLE hSCManager,
 In LPCTSTR lpServiceName,
 _In_opt_ LPCTSTR lpDisplayName,
 In DWORD dwDesiredAccess,
 In DWORD dwServiceType,
 In DWORD dwStartType,
 In DWORD dwErrorControl,
 _In_opt_ LPCTSTR lpBinaryPathName,
 _In_opt_ LPCTSTR lpLoadOrderGroup,
 _Out_opt_ LPDWORD lpdwTagId,
 _In_opt_ LPCTSTR lpDependencies,
 _In_opt_ LPCTSTR lpServiceStartName,
 _In_opt_ LPCTSTR lpPassword);



Nutné kroky



Timeouty

- ▶ Zavolání `StartServiceCtrlDispatcher()` ... 30 sekund
- ▶ Aktualizace statusu v `ServiceMain()` ... 80 sekund
- ▶ Obsluha požadavku `SvcCtrlHandler()` ... 30 sekund
- ▶ Obsluha požadavku
`SvcCtrlHandler(SERVICE_CONTROL_SHUTDOWN)` ...
20 sekund
- ▶ Ukončení procesu po
`SetServiceStatus(SERVICE_STOPPED)` ... 30 sekund



Díky za pozornost

