



Cable ID: TP002

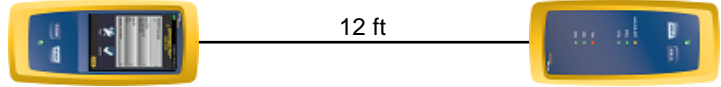
Date / Time: 11/03/2014 08:37:33 PM
Headroom 3.4 dB (NEXT 36-45)
Test Limit: ISO11801 PL Class E
 Cable Type: Cat 5e U/UTP
 Calibration Date: 08/28/2014

Software Version: V3.0 Build 6
 Limits Version: V3.0
 NVP: 69.0%

Test Summary: PASS

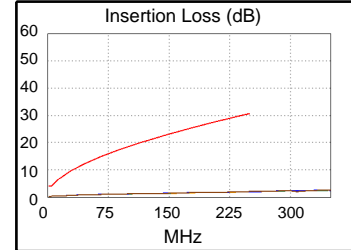
Model: DSX-5000
 Main S/N: 2797057
 Remote S/N: 2797075
 Main Adapter: DSX-CHA004
 Remote Adapter: DSX-CHA004

Length (ft), Limit 295	[Pair 78]	12
Prop. Delay (ns), Limit 498	[Pair 36]	19
Delay Skew (ns), Limit 44	[Pair 12]	1
Resistance (ohms), Limit 21.0	[Pair 12]	0.9
Insertion Loss Margin (dB)	[Pair 45]	27.9
Frequency (MHz)	[Pair 45]	240.5
Limit (dB)	[Pair 45]	30.0



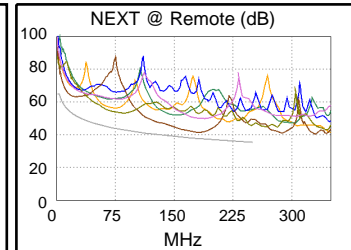
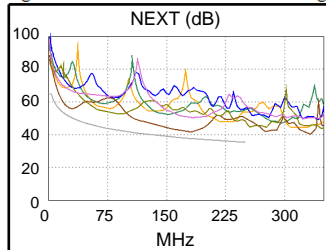
Wire Map (T568B)

PASS

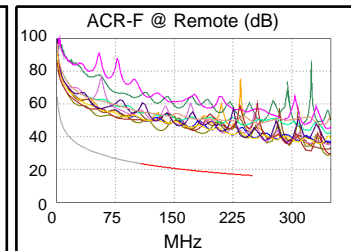
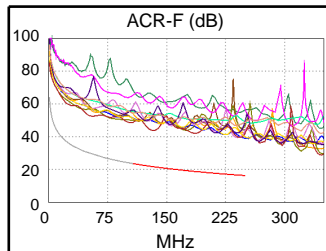


Worst Case Margin Worst Case Value

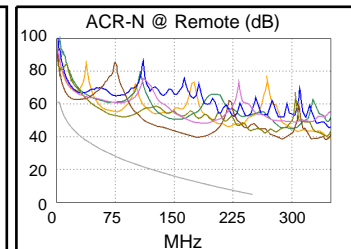
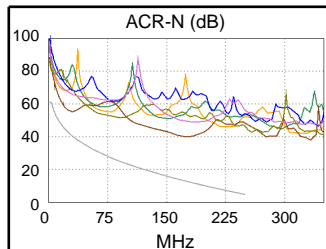
N/A	MAIN	SR	MAIN	SR
Worst Pair	36-45	36-45	36-45	36-45
NEXT (dB)	3.6	3.4	3.8	3.5
Freq. (MHz)	175.5	175.5	178.5	179.0
Limit (dB)	37.9	37.9	37.7	37.7
Worst Pair	45	45	45	45
PS NEXT (dB)	5.5	5.4	5.8	5.5
Freq. (MHz)	173.0	175.5	178.5	179.0
Limit (dB)	35.4	35.3	35.1	35.1



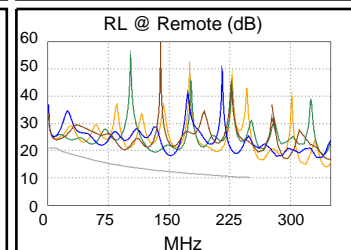
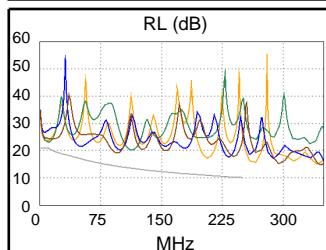
PASS	MAIN	SR	MAIN	SR
Worst Pair	45-36	36-45	12-78	78-12
ACR-F (dB)	22.0	22.0	22.8	23.0
Freq. (MHz)	132.0	132.0	250.0	250.0
Limit (dB)	21.8	21.8	16.2	16.2
Worst Pair	36	12	36	12
PS ACR-F (dB)	23.2	24.3	23.2	24.4
Freq. (MHz)	243.5	249.0	243.5	250.0
Limit (dB)	13.5	13.3	13.5	13.2



N/A	MAIN	SR	MAIN	SR
Worst Pair	36-45	36-45	36-45	36-45
ACR-N (dB)	13.0	15.1	27.7	27.7
Freq. (MHz)	19.0	15.5	178.5	181.0
Limit (dB)	45.7	47.8	12.3	12.0
Worst Pair	45	36	45	45
PS ACR-N (dB)	14.9	16.6	29.7	29.7
Freq. (MHz)	19.0	15.5	178.5	181.0
Limit (dB)	43.3	45.5	9.7	9.4



N/A	MAIN	SR	MAIN	SR
Worst Pair	36	78	12	45
RL (dB)	2.1	2.9	6.5	5.9
Freq. (MHz)	10.6	9.9	208.0	152.5
Limit (dB)	20.9	21.0	10.8	12.2



Compliant Network Standards:
 10BASE-T 100BASE-TX 100BASE-T4
 1000BASE-T ATM-25 ATM-51
 ATM-155 100VG-AnyLan TR-4
 TR-16 Active TR-16 Passive