

# Systemové programování Windows

Služby

# Obsah

---

- ▶ Prohlížení služeb
- ▶ Instalace
- ▶ Nutné kroky



# Prohlížení služeb

---

- ▶ Services.msc



# Instalace

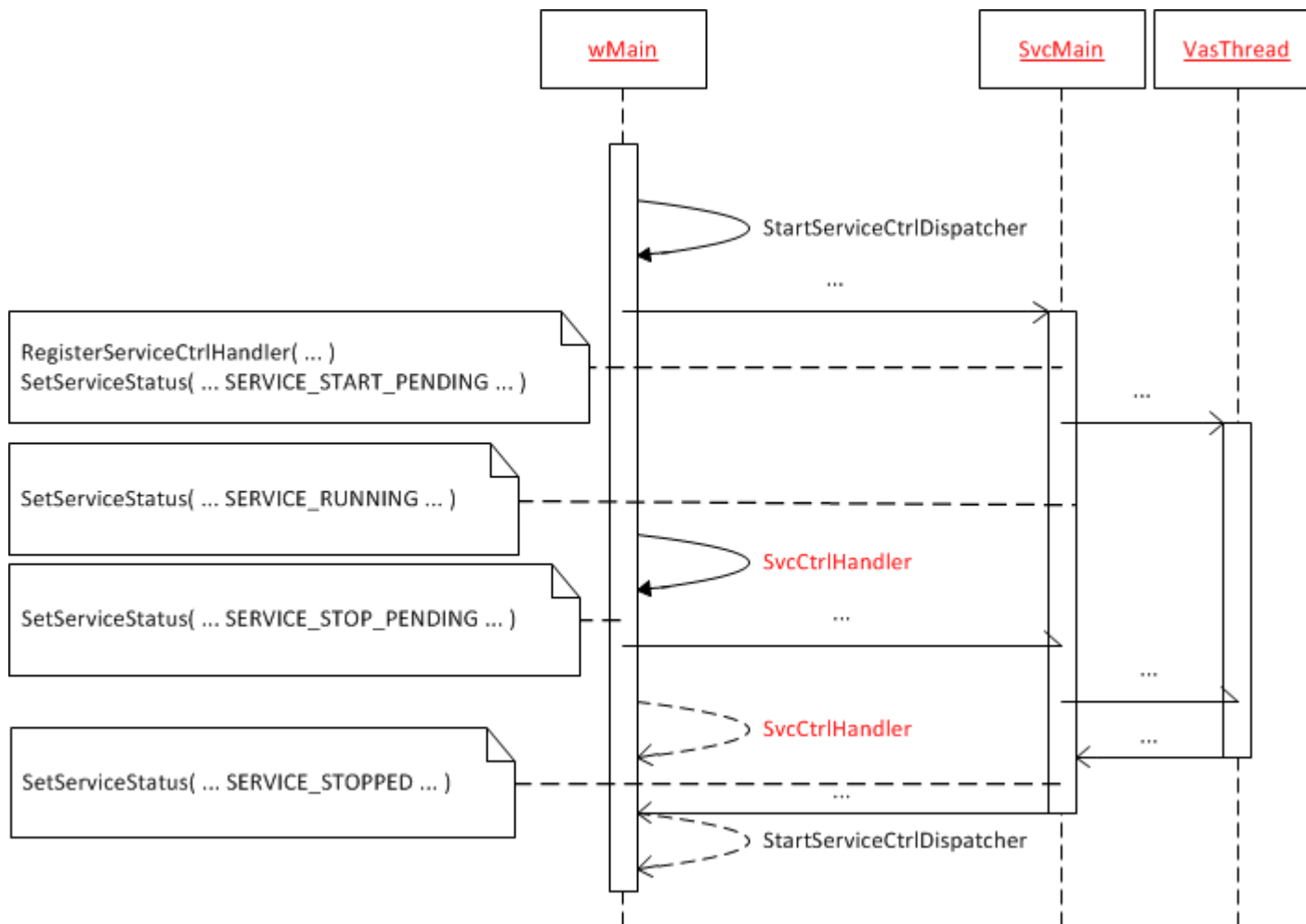
---

- ▶ OpenSCManager

- ▶ SC\_HANDLE WINAPI CreateService(  
    \_In\_ SC\_HANDLE hSCManager,  
    \_In\_ LPCTSTR lpServiceName,  
    \_In\_opt\_ LPCTSTR lpDisplayName,  
    \_In\_ DWORD dwDesiredAccess,  
    \_In\_ DWORD dwServiceType,  
    \_In\_ DWORD dwStartType,  
    \_In\_ DWORD dwErrorControl,  
    \_In\_opt\_ LPCTSTR lpBinaryPathName,  
    \_In\_opt\_ LPCTSTR lpLoadOrderGroup,  
    \_Out\_opt\_ LPDWORD lpdwTagId,  
    \_In\_opt\_ LPCTSTR lpDependencies,  
    \_In\_opt\_ LPCTSTR lpServiceStartName,  
    \_In\_opt\_ LPCTSTR lpPassword );



# Nutné kroky



# Timeouty

---

- ▶ Zavolání `StartServiceCtrlDispatcher()` ... 30 sekund
- ▶ Aktualizace statusu v `ServiceMain()` ... 80 sekund
- ▶ Obsluha požadavku `SvcCtrlHandler()` ... 30 sekund
- ▶ Obsluha požadavku  
`SvcCtrlHandler(SERVICE_CONTROL_SHUTDOWN)` ...  
20 sekund
- ▶ Ukončení procesu po  
`SetServiceStatus(SERVICE_STOPPED)` ... 30 sekund



---

Díky za pozornost

