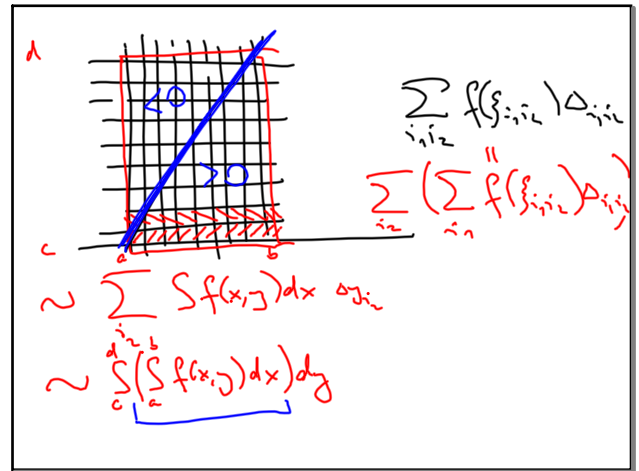
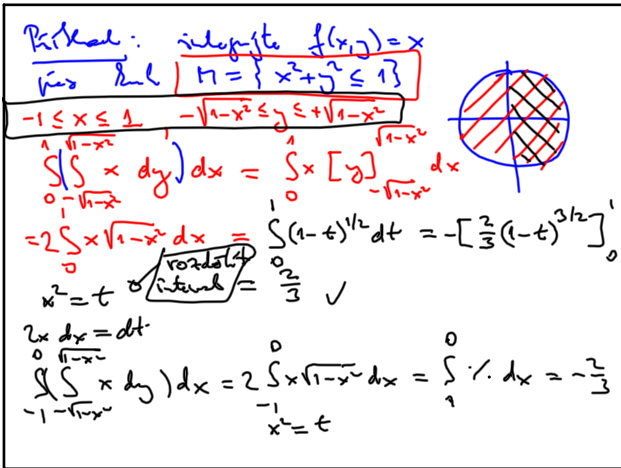


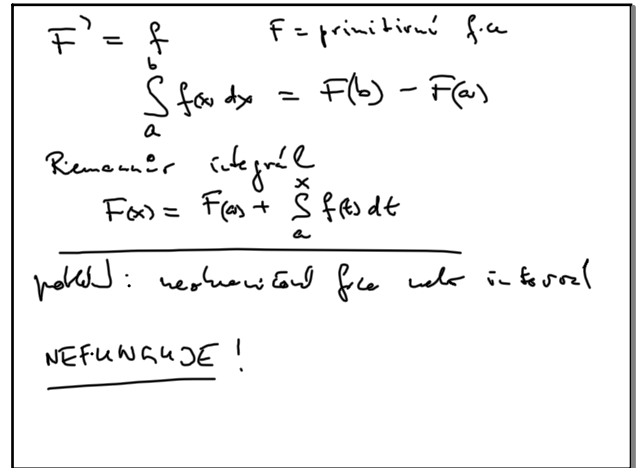
10 25-15:57



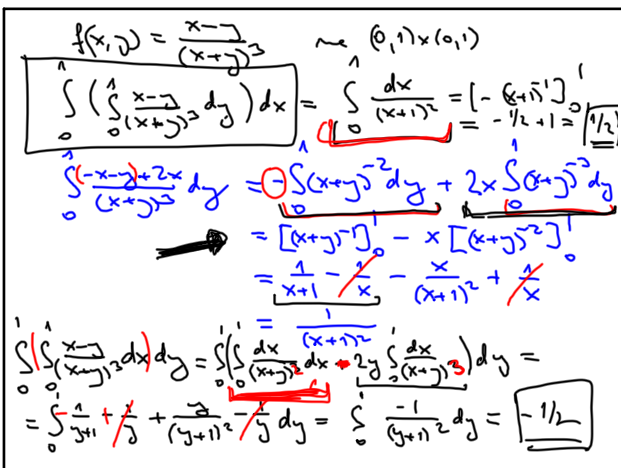
10 25-16:11



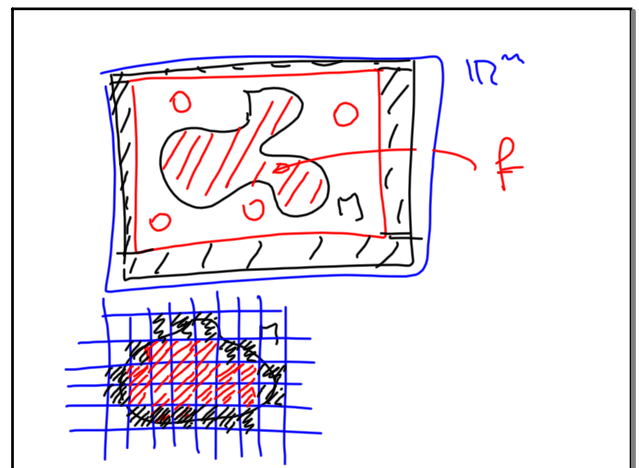
10 25-16:17



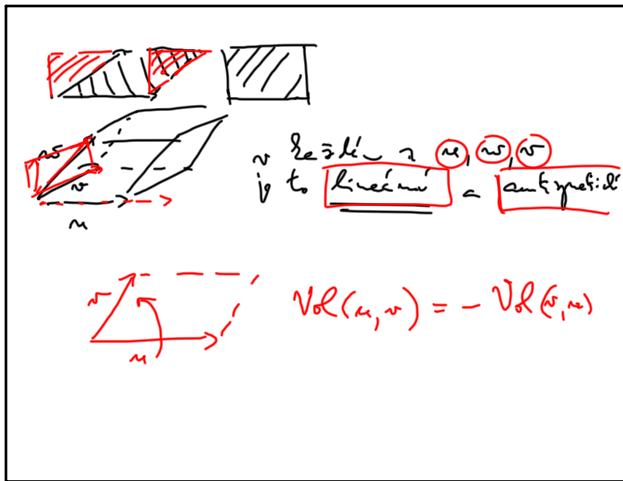
10 25-16:33



10 25-16:39

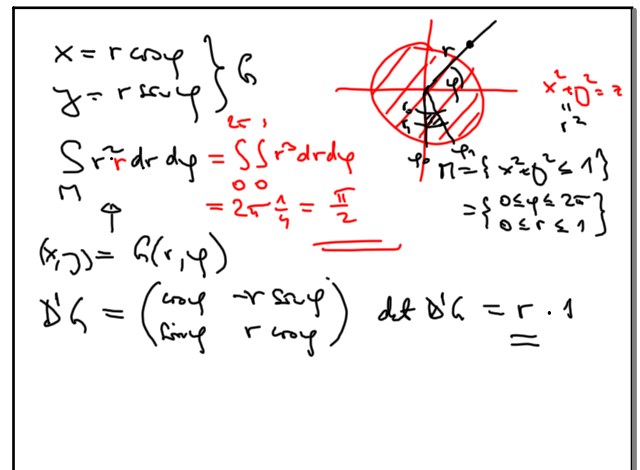


10 25-17:00



\vec{n} je žilka \vec{u} \vec{v} \vec{u} \vec{v}
 je to lineární = antysymetrické
 $\text{Vol}(u, v) = -\text{Vol}(v, u)$

10 25-17:21



$x = r \cos \varphi$
 $y = r \sin \varphi$

$\iint_{\Omega} r^2 dr d\varphi = \int_0^{2\pi} \int_0^1 r^2 dr d\varphi$
 $= \int_0^{2\pi} \frac{r^3}{3} \Big|_0^1 d\varphi = \int_0^{2\pi} \frac{1}{3} d\varphi = \frac{\pi}{3}$

$\Omega = \{x^2 + y^2 \leq 1\}$
 $= \{0 \leq \varphi \leq 2\pi\}$
 $= \{0 \leq r \leq 1\}$

$(x, y) = h(r, \varphi)$
 $D'h = \begin{pmatrix} \cos \varphi & -r \sin \varphi \\ \sin \varphi & r \cos \varphi \end{pmatrix} \det D'h = r \cdot 1$

10 25-17:28