

Gantt Chart & Network Diagram

DUM 11

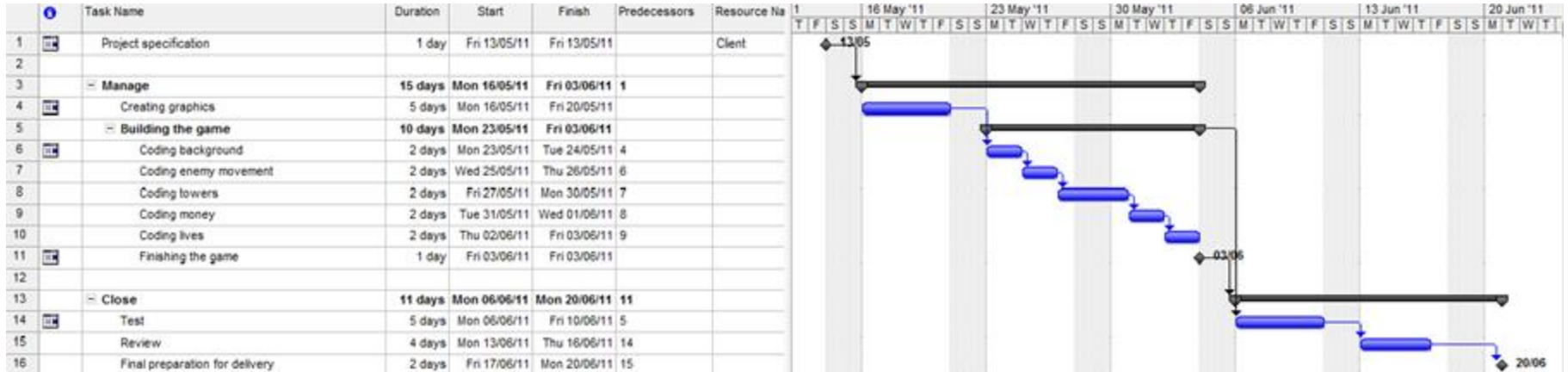
Gantt Chart

Gantt chart is a striped diagram named after H.L.Gantt, industrial engineer who pioneered using this diagram during WW1

Gantt chart is used in project management for graphic representation of planning sequence of activities over time

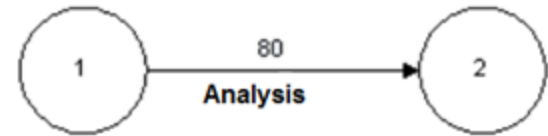
Original Gantt chart does not reflect relationships between activities but modern PM software tools usually implement them

Gantt Chart with multiple levels, WBS, Milestones and dependencies between activities



Network Diagram

- 1) AoA - Activity on Arrow - nodes represent milestones between project phases, transition between them is illustrated by arrow. AoA variant is less frequently used.
- 1) AoN - Activity on Node - Here are milestones represented by the transitions between nodes, meanwhile individual activities are represented as nodes. Transitions has zero length of duration.



Activity relations

- **Finish-to-Start (FS)**
 - B can't start until A ends.
 - A: build a fence; B: paint the fence.
- **Start-to-Start (SS)**
 - B can't start until A starts.
 - A: grass mowing; B: grass raking.
- **Finish-to-Finish (FF)**
 - B can't end until A ends.
 - A: add vinegar; B: blend mayonnaise.
- **Start-to-Finish (SF)**
 - B can't end until A starts.
 - Rarely used.

