



# Module 12: WLAN Concepts

Switching, Routing and Wireless Essentials v7.0  
(SRWE)



# Module Objectives

**Module Title:** WLAN Concepts

**Module Objective:** Explain how WLANs enable network connectivity.

Topic Title	Topic Objective
Introduction to Wireless	Describe WLAN technology and standards.
Components of WLANs	Describe the components of a WLAN infrastructure.
WLAN Operation	Explain how wireless technology enables WLAN operation.
CAPWAP Operation	Explain how a WLC uses CAPWAP to manage multiple APs.
Channel Management	Describe channel management in a WLAN.
WLAN Threats	Describe threats to WLANs.
Secure WLANs	Describe WLAN security mechanisms.

# 12.1 Introduction to Wireless

# Benefits of Wireless

- A Wireless LAN (WLAN) is a type of wireless network that is commonly used in homes, offices, and campus environments.
- WLANs make mobility possible within the home and business environments.
- Wireless infrastructures adapt to **rapidly changing needs and technologies**.



# Types of Wireless Networks

- **Wireless Personal-Area Network (WPAN)** – Low power and short-range (20-30ft or 6-9 meters). Based on IEEE 802.15 standard and 2.4 GHz frequency. Bluetooth and Zigbee are WPAN examples.
- **Wireless LAN (WLAN)** – Medium sized networks up to about 300 feet. Based on IEEE 802.11 standard and 2.4 or 5.0 GHz frequency.
- **Wireless MAN (WMAN)** – Large geographic area such as city or district. Uses specific licensed frequencies.
- **Wireless WAN (WWAN)** – Extensive geographic area for national or global communication. Uses specific licensed frequencies.

# Wireless Technologies

**Bluetooth** – IEEE WPAN standard used for device pairing at up to 300ft (100m) distance.

- **Bluetooth Low Energy** (BLE) – Supports mesh topology to large scale network devices.
- **Bluetooth Basic Rate/Enhanced Rate** (BR/EDR) – Supports point-to-point topologies and is optimized for audio streaming.

**WiMAX (Worldwide Interoperability for Microwave Access)** – Alternative broadband wired internet connections. **IEEE 802.16 WLAN** standard for up to **30 miles (50 km)**.



# Wireless Technologies (Cont.)

**Cellular Broadband** – Carry both voice and data. Used by phones, automobiles, tablets, and laptops.

- Global System of Mobile (GSM) – Internationally recognized
- Code Division Multiple Access (CDMA) – Primarily used on the US.

**Satellite Broadband** – Uses directional satellite dish (talíř, miska) aligned with satellite in geostationary orbit. Needs clear line of site. Typically used in rural locations where cable and DSL are unavailable.



# 802.11 Standards

802.11 WLAN standards define how radio frequencies are used for wireless links.

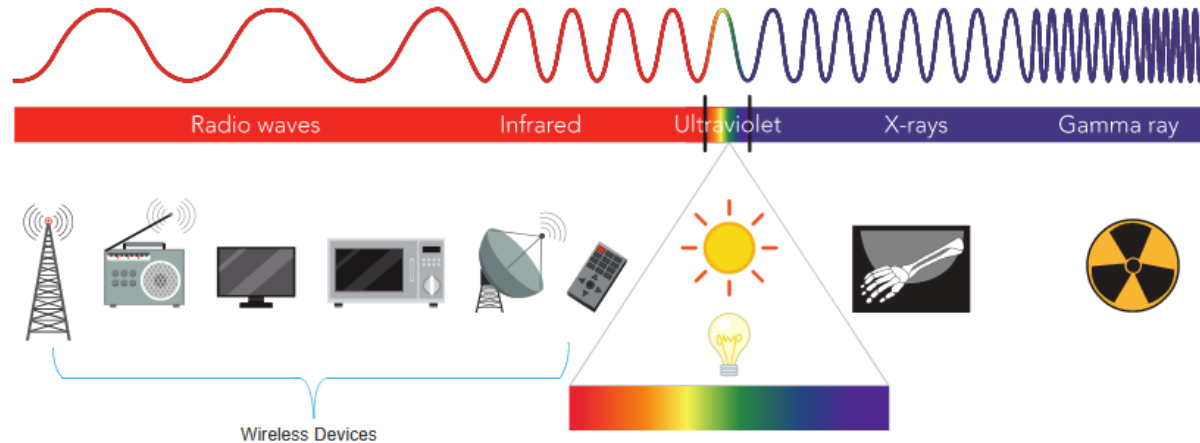
IEEE Standard	Radio Frequency	Description
802.11	2.4 GHz	Data rates up to 2 Mb/s
802.11a	5 GHz	Data rates up to 54 Mb/s Not interoperable with 802.11b or 802.11g
802.11b	2.4 GHz	Data rates up to 11 Mb/s Longer range than 802.11a and better able to penetrate building structures
802.11g	2.4 GHz	Data rates up to 54 Mb/s Backward compatible with 802.11b
802.11n	2.4 and 5 GHz	Data rates 150 – 600 Mb/s Require multiple antennas with MIMO technology
802.11ac	5 GHz	Data rates 450 Mb/s – 1.3 Gb/s Supports up to eight antennas
802.11ax	2.4 and 5 GHz	High-Efficiency Wireless (HEW) Capable of using 1 GHz and 7 GHz frequencies



# Radio Frequencies

All wireless devices operate in the range of the electromagnetic spectrum. WLAN networks operate in the 2.4 and 5 GHz frequency bands.

- 2.4 GHz (UHF) – 802.11b/g/n/ax
- 5 GHz (SHF) – 802.11a/n/ac/ax



# Wireless Standards Organizations

Standards ensure interoperability between devices that are made by different manufacturers. Internationally, the three organizations influencing WLAN standards:

- **International Telecommunication Union (ITU)** – Regulates the allocation of radio spectrum and satellite orbits.
- **Institute of Electrical and Electronics Engineers (IEEE)** – Specifies how a radio frequency is modulated to carry information. Maintains the standards for local and metropolitan area networks (MAN) with the IEEE 802 LAN/MAN family of standards.
- **Wi-Fi Alliance** – Promotes the growth and acceptance of WLANs. It is an association of vendors whose objective is to improve the interoperability of products that are based on the 802.11 standard

## 12.2 WLAN Components

# Video – WLAN Components

This video will cover the following:

- Antennas
- Wireless Router
- Internet Port
- Wireless Access Point
- Autonomous and controller-based access points

# Wireless NICs

To communicate wirelessly, laptops, tablets, smart phones, and even the latest automobiles include integrated wireless NICs that incorporate a radio transmitter/receiver.

If a device does not have an integrated wireless NIC, then a USB wireless adapter can be used.



# Wireless Home Router

A home user typically interconnects wireless devices using a small, wireless router.

Wireless routers serve as the following:

- **Access point** – To provide wireless access
- **Switch** – To interconnect wired devices
- **Router** - To provide a default gateway to other networks and the Internet



# Wireless Access Point

Wireless clients use their wireless NIC to discover nearby access points (APs).

Clients then attempt to associate and authenticate with an AP.

After being authenticated, wireless users have access to network resources.

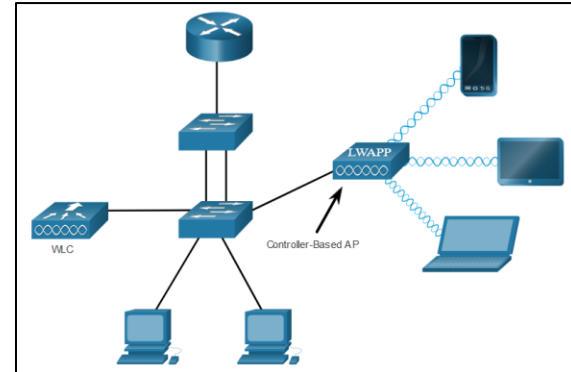
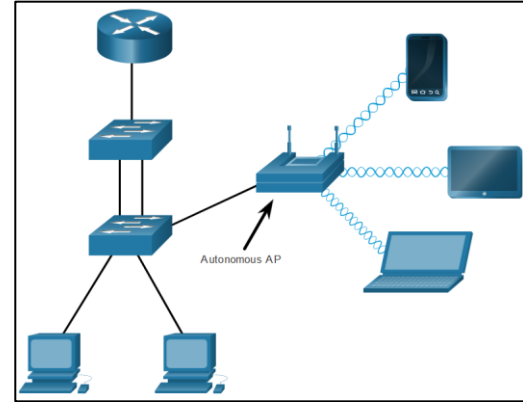


Cisco Meraki Go access points

# AP Categories

APs can be categorized as either autonomous APs or controller-based APs.

- **Autonomous APs** – Standalone devices configured through a command line interface or GUI. Each autonomous AP acts independently of the others and is configured and managed manually by an administrator.
- **Controller-based APs** – Also known as lightweight APs (LAPs). Use **Lightweight Access Point Protocol** (LWAPP) to communicate with a **WLAN controller** (WLC). Each LAP is automatically configured and managed by the WLC.





# Wireless Antennas

Types of external antennas:

- **Omnidirectional** – Provide 360-degree coverage. Ideal in houses and office areas.
- **Directional** – Focus the radio signal in a specific direction. Examples are the Yagi and parabolic dish.
- **Multiple Input Multiple Output (MIMO)** – Uses multiple antennas (Up to eight) to increase bandwidth.



## 12.3 WLAN Operation

# Video – WLAN Operation

This video will cover the following:

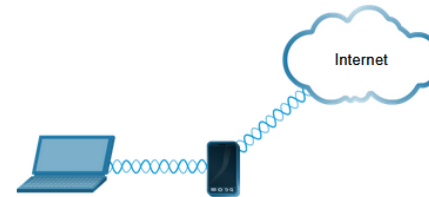
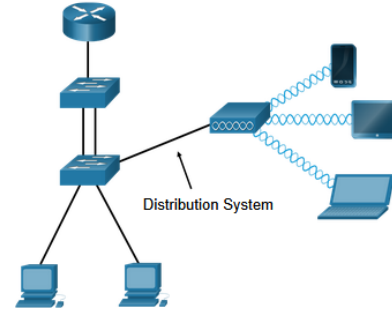
- Infrastructure Mode
- Ad hoc Mode
- Tethering
- Basic Service Set (BSS)
- Extended Service Set (ESS)
- 802.11 Frame Structure
- Carrier Sense Multiple Access Collision Avoidance (CSMA/CA)
- Wireless Client AP Association
- Passive and Active Delivery Mode

# 802.11 Wireless Topology Modes

**Ad hoc mode** - Used to connect clients in peer-to-peer manner without an AP.

**Infrastructure mode** - Used to connect clients to the network using an AP.

**Tethering** - Variation of the ad hoc topology is when a smart phone or tablet with cellular data access is enabled to create a personal hotspot.



# BSS and ESS

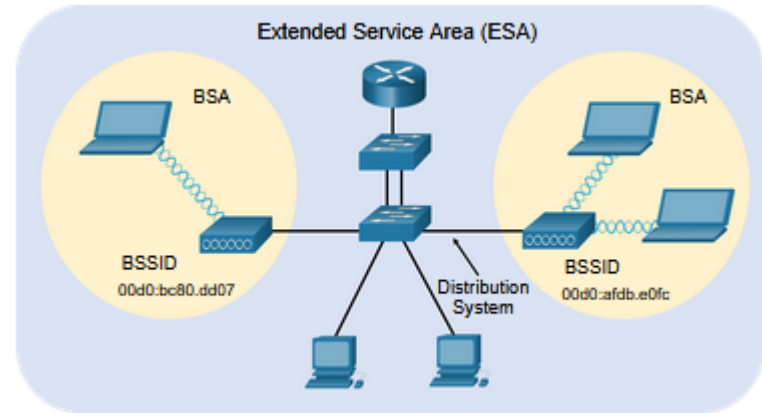
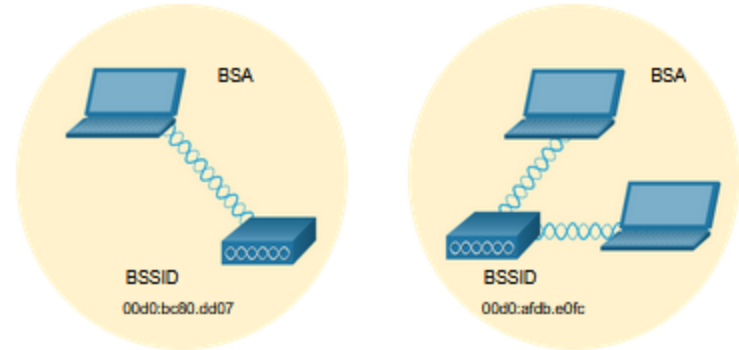
Infrastructure mode defines two topology blocks:

## Basic Service Set (BSS)

- Uses single AP to interconnect all associated wireless clients.
- Clients in different BSSs cannot communicate.

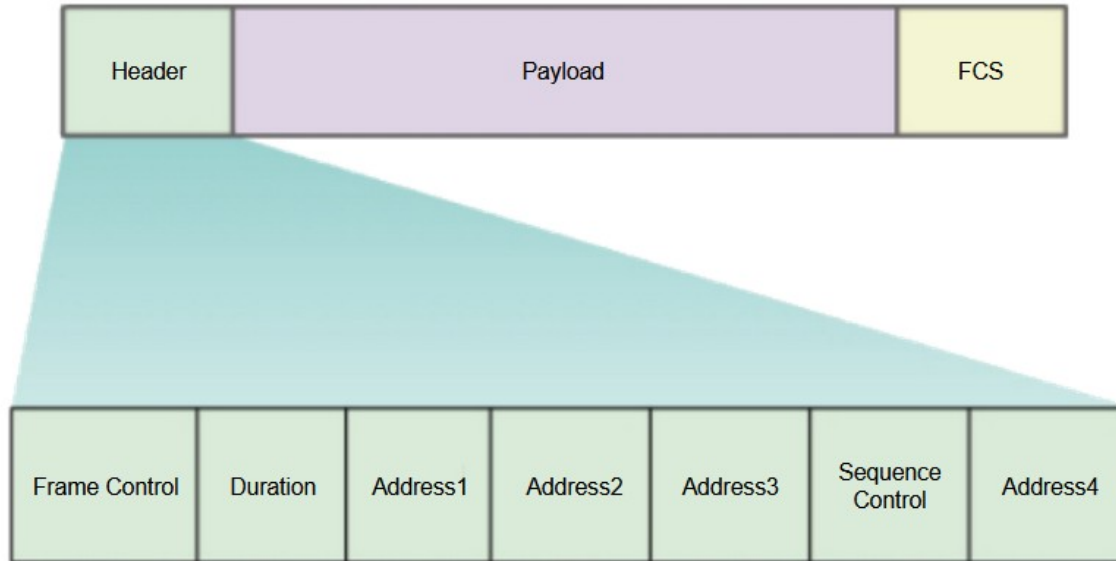
## Extended Service Set (ESS)

- A union of two or more BSSs interconnected by a wired distribution system.
- Clients in each BSS can communicate through the ESS.



# 802.11 Frame Structure

The 802.11 frame format is similar to the Ethernet frame format, except that it contains more fields.



# CSMA/CA

WLANs are half-duplex and a client cannot “hear” while it is sending, making it impossible to detect a collision.

WLANs use carrier sense multiple access with collision avoidance (CSMA/CA) to determine how and when to send data. A wireless client does the following:

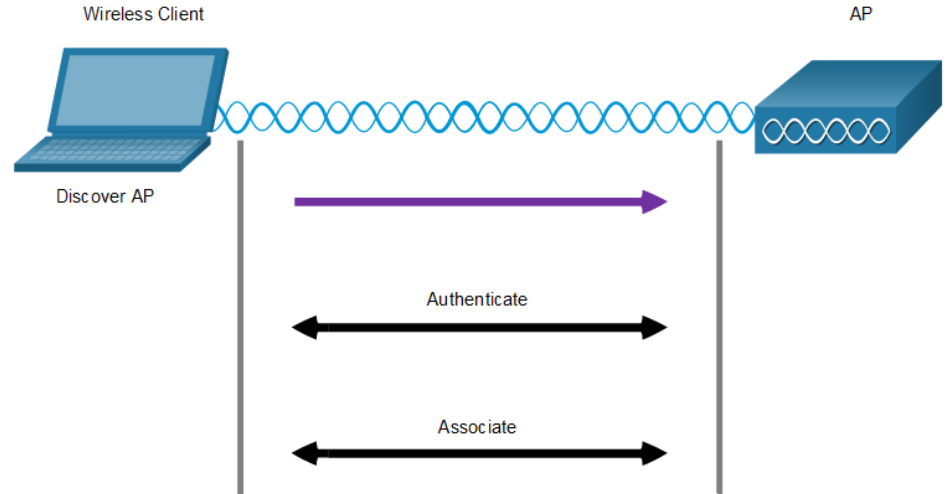
1. Listens to the channel to see if it is idle, i.e. no other traffic currently on the channel.
2. Sends a **ready to send** (RTS) message the AP to request dedicated access to the network.
3. Receives a **clear to send** (CTS) message from the AP granting access to send.
4. Waits a random amount of time before restarting the process if no CTS message received.
5. Transmits the data.
6. Acknowledges all transmissions. If a wireless client does not receive an acknowledgment, it assumes a collision occurred and restarts the process

# Wireless Client and AP Association

For wireless devices to communicate over a network, they must first associate with an AP or wireless router.

Wireless devices complete the following three stage process:

- Discover a wireless AP
- Authenticate with the AP
- Associate with the AP





# Wireless Client and AP Association (Cont.)

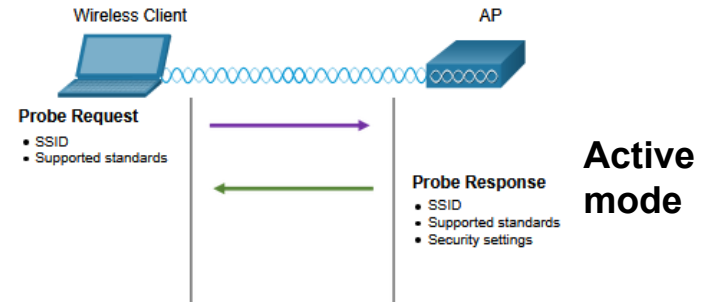
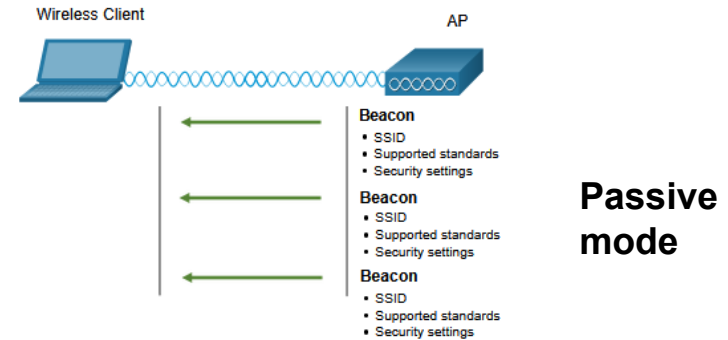
To achieve successful association, a wireless client and an AP must agree on specific parameters:

- **SSID** – The client needs to know the name of the network to connect.
- **Password** – This is required for the client to authenticate to the AP.
- **Network mode** – The 802.11 standard in use.
- **Security mode** – The security parameter settings, i.e. WEP, WPA, or WPA2.
- **Channel settings** – The frequency bands in use.

# Passive and Active Discover Mode

Wireless clients connect to the AP using a passive or active scanning (probing) process.

- **Passive mode** – AP openly advertises its service by periodically sending broadcast **beacon** (maják) frames containing the SSID, supported standards, and security settings.
- **Active mode** – Wireless clients **must know the name of the SSID**. The wireless client initiates the process by broadcasting a probe request frame on multiple channels.



# 12.4 CAPWAP Operation

# Video – CAPWAP

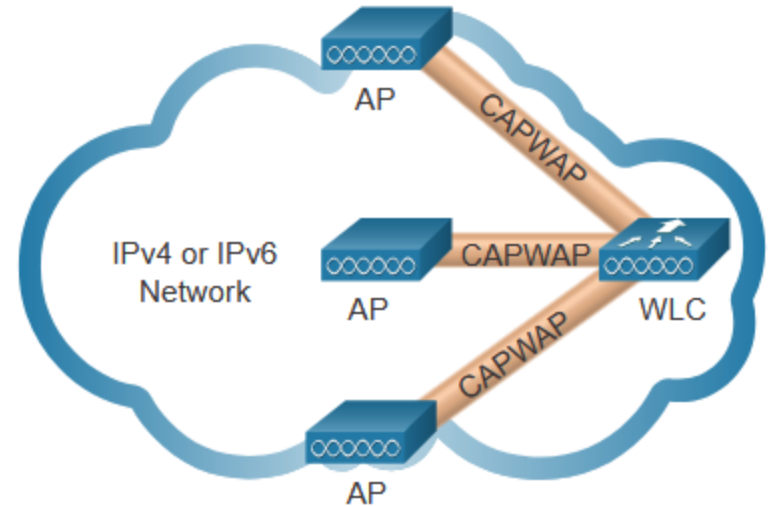
This video will cover the following:

- **Control and Provisioning of Wireless Access Points (CAPWAP)** function
- Split Media Access Control (MAC) Architecture
- DTLS Encryption
- Flex Connect Aps

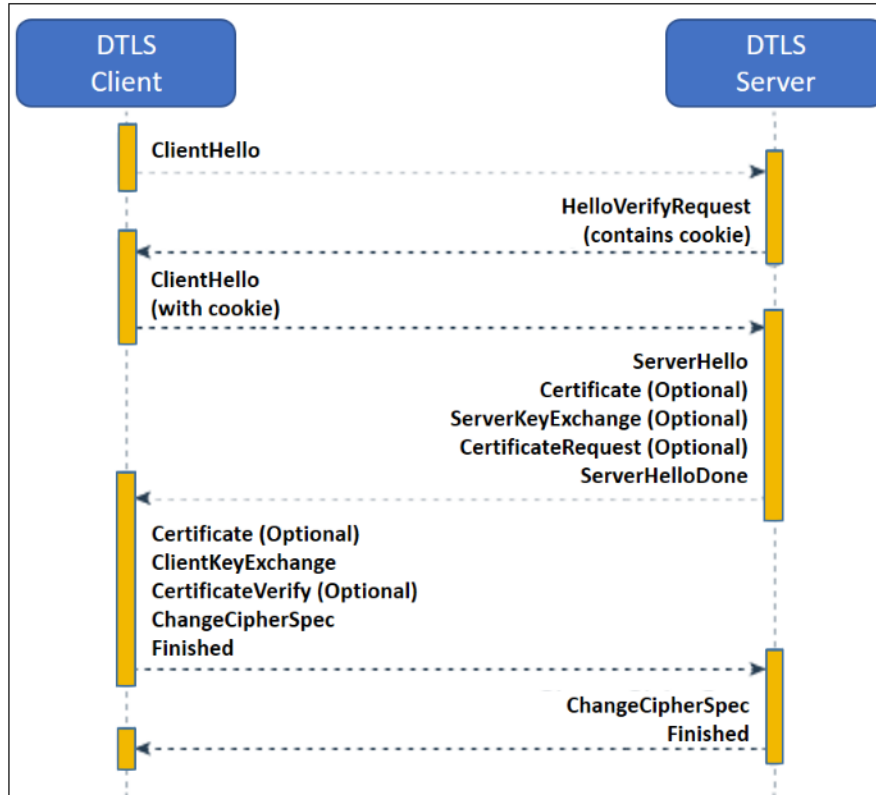
- **RFC 4564** defines the objectives for the CAPWAP protocol.
- **RFC 5418** covers the threat analysis for IEEE 802.11 deployments.
- **RFC 5415** defines the actual CAPWAP protocol specifications.

# Introduction to CAPWAP

- CAPWAP is an IEEE standard protocol that enables a WLC to manage multiple APs and WLANs.
- Based on LWAPP but adds additional security with Datagram Transport Layer Security (DLTS).
- Encapsulates and forwards WLAN client traffic between an AP and a WLC over tunnels using UDP ports 5246 and 5247.
- Operates over both IPv4 and IPv6. IPv4 uses IP protocol 17 and IPv6 uses IP protocol 136.



# Výměna zpráv DTLS



# Split MAC Architecture

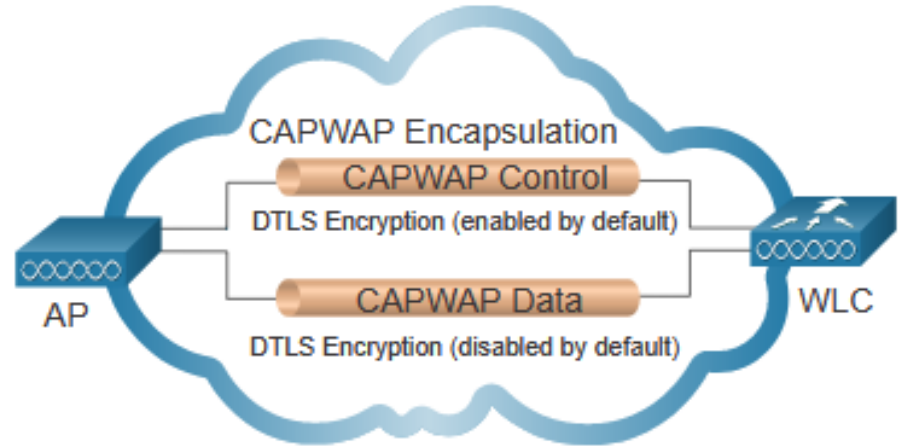
The CAPWAP split MAC concept does all the functions normally performed by individual APs and distributes them between two functional components:

- AP MAC Functions
- WLC MAC Functions

AP MAC Functions	WLC MAC Functions
Beacons and probe responses	Authentication
Packet acknowledgements and retransmissions	Association and re-association of roaming clients
Frame queueing and packet prioritization	Frame translation to other protocols
MAC layer data encryption and decryption	Termination of 802.11 traffic on a wired interface

# DTLS Encryption

- DTLS provides security between the AP and the WLC.
- It is enabled **by default** to secure the CAPWAP control channel and encrypt all management and control traffic between AP and WLC.
- Data encryption is disabled by default and requires a DTLS license to be installed on the WLC before it can be enabled on the AP.



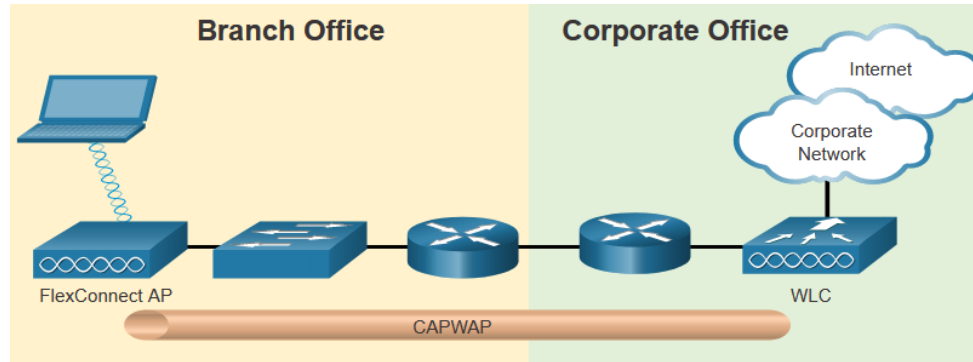


# Flex Connect APs

FlexConnect enables the configuration and control of Aps over a WAN link.

There are two modes of option for the FlexConnect AP:

- **Connected mode** – The WLC is reachable. The FlexConnect AP has CAPWAP connectivity with the WLC through the CAPWAP tunnel. The WLC performs all CAPWAP functions.
- **Standalone mode** – The WLC is unreachable. The FlexConnect AP has lost CAPWAP connectivity with the WLC. The FlexConnect AP can assume some of the WLC functions such as switching client **data traffic locally** and performing client **authentication locally**.



# 12.5 Channel Management

# Frequency Channel Saturation

If the demand for a specific wireless channel is too high, the channel may become oversaturated, degrading the quality of the communication.

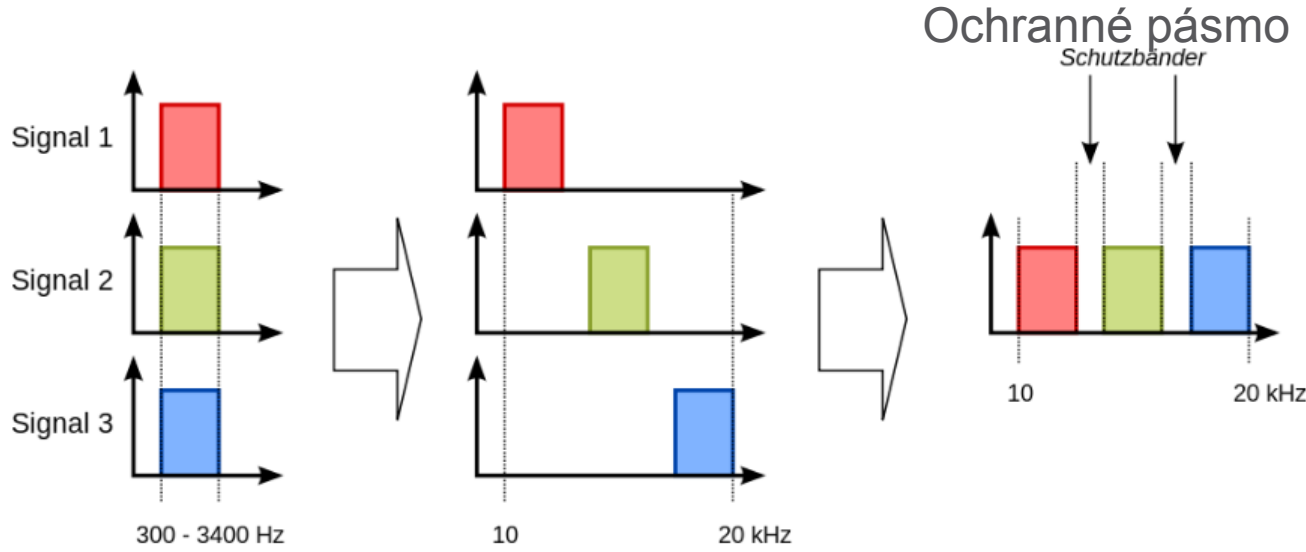
Channel saturation can be mitigated using techniques that use the channels more efficiently.

- **Direct-Sequence Spread Spectrum (DSSS)** - A modulation technique designed to spread a signal over a larger frequency band. Used by 802.11b devices to avoid interference from other devices using the same 2.4 GHz frequency.
- **Frequency-Hopping Spread Spectrum (FHSS)** - Transmits radio signals by rapidly switching a carrier signal among many frequency channels. Sender and receiver must be synchronized to “know” which channel to jump to. Used by the original 802.11 standard.
- **Orthogonal Frequency-Division Multiplexing (OFDM)** - A subset of frequency division multiplexing in which a single channel uses multiple sub-channels on adjacent frequencies. OFDM is used by a number of communication systems including 802.11a/g/n/ac.

# Začneme od Adama: Co je FDM (frequency-division multiplexing)

- Frekvenční multiplexování (FDM) je technika multiplexování, což znamená kombinování více než jednoho signálu na sdíleném médiu. Ve FDM jsou kombinovány signály různých frekvencí pro souběžný přenos.
- Kmitočtové spektrum každého vstupního signálu je posunuto do jiného kmitočtového pásma; přenáší se sloučené signály, které jsou na přijímací straně od sebe odděleny pomocí pásmových propustí a posunuty do původního kmitočtového pásma.

# Mixování tří signálů V rámci FDM

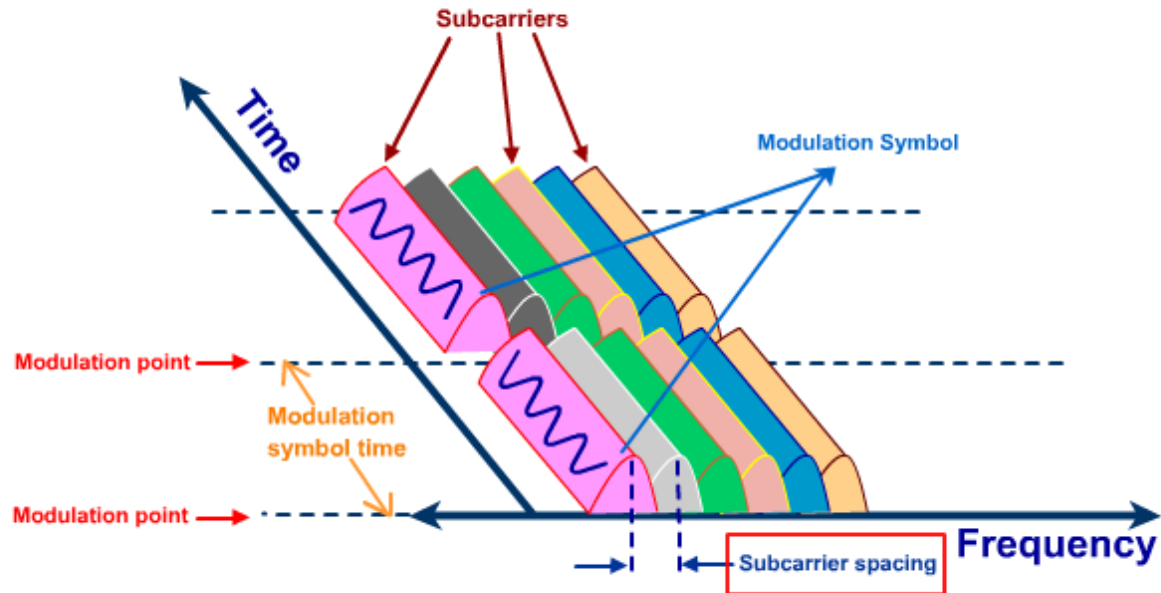


# OFDM

## (Orthogonal Frequency Division Multiplexing)

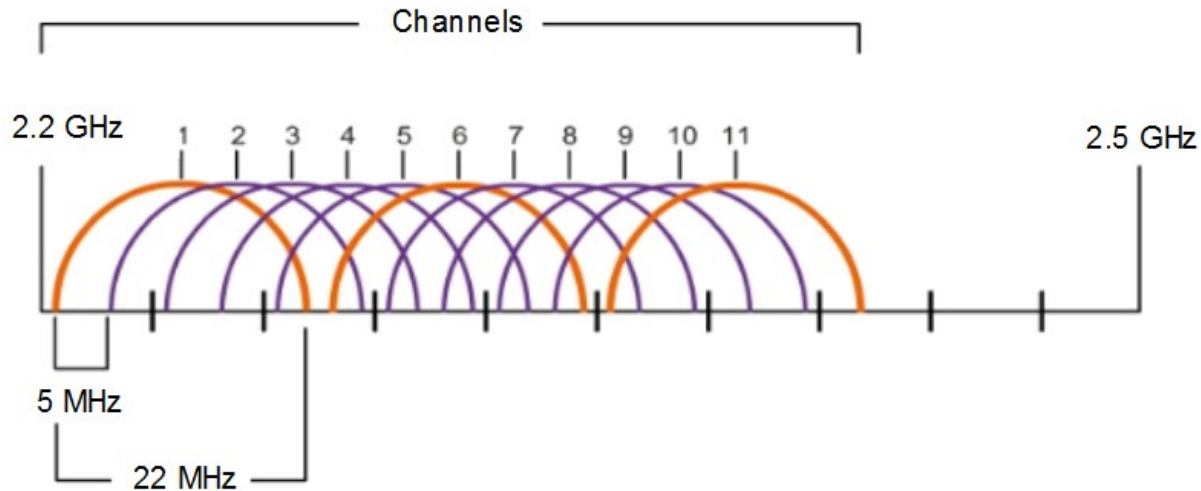
- **OFDM** (anglicky Orthogonal Frequency Division Multiplexing, ortogonální multiplex s frekvenčním dělením) je širokopásmová modulace využívající frekvenční dělení kanálu.
- Pracuje s tzv. rozprostřeným spektrem, kdy je signál vysílán na více vzájemně ortogonálních frekvencích , které jsou označovány jako subnosné.

# Podkanály v OFDM



# Channel Selection

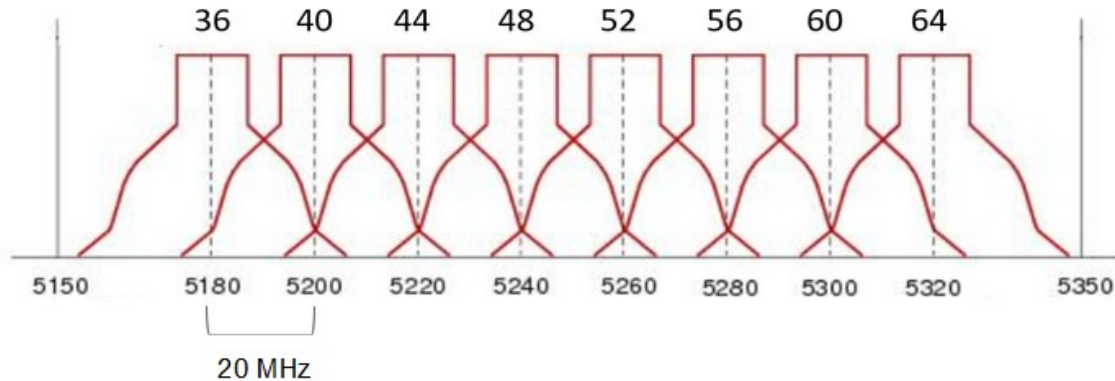
- The 2.4 GHz band is subdivided into multiple channels each allotted 22 MHz bandwidth and separated from the next channel by 5 MHz.
- A best practice for 802.11b/g/n WLANs requiring multiple APs is to use non-overlapping channels such as 1, 6, and 11.



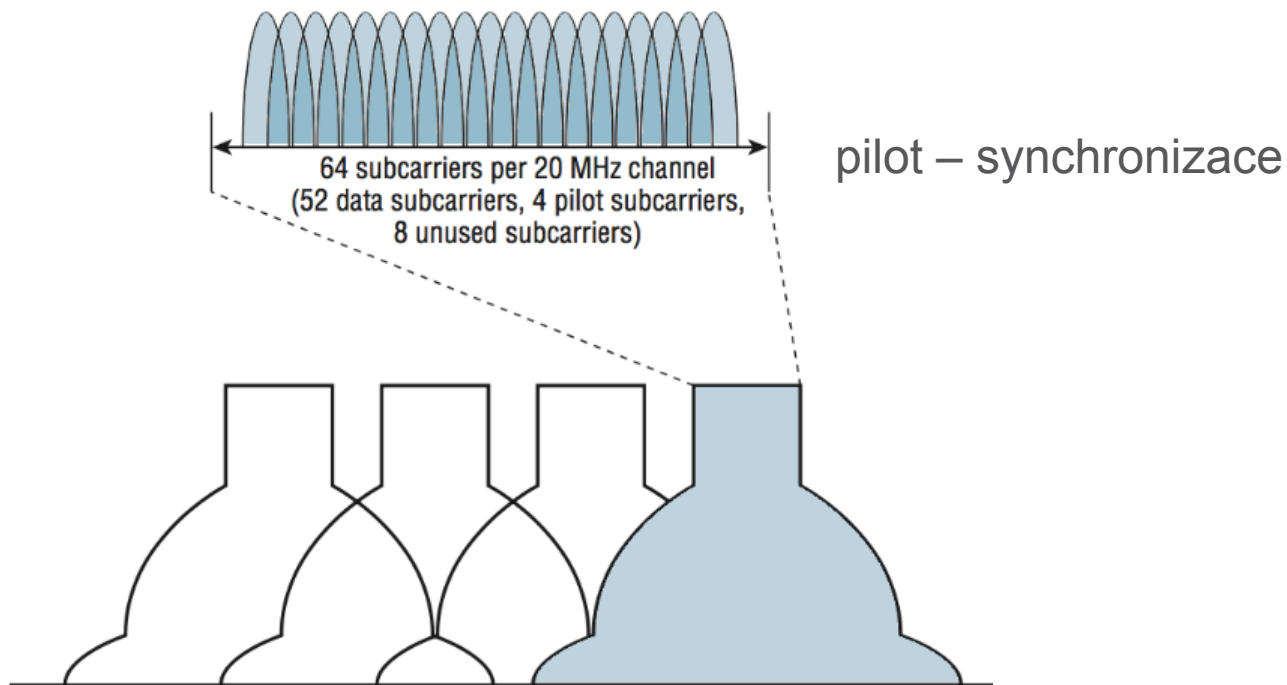


# Channel Selection (Cont.)

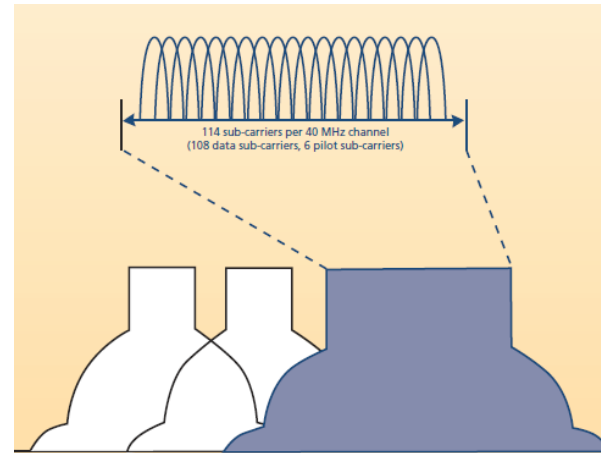
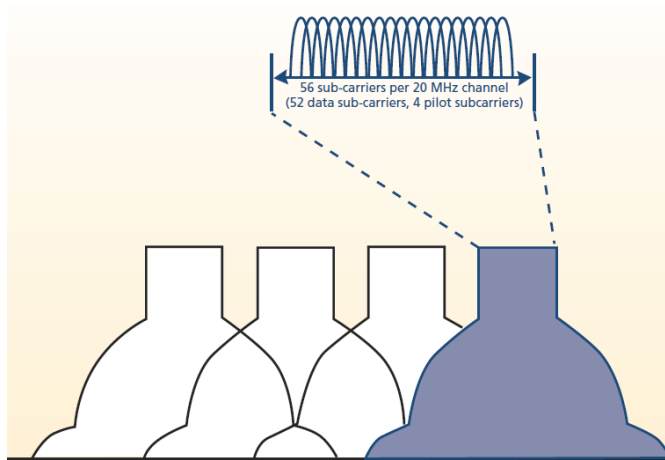
- For the 5GHz standards 802.11a/n/ac, there are 24 channels. Each channel is separated from the next channel by 20 MHz.
- Non-overlapping channels are 36, 48, and 60.



# U 802.11n/ac je podkanálů 64 (Každý OFDM subcarrier je 312.5 KHz)



# Následovalo zrychlení OFDM z 20 na 40 MHz a zvýšení počtu subkanálů



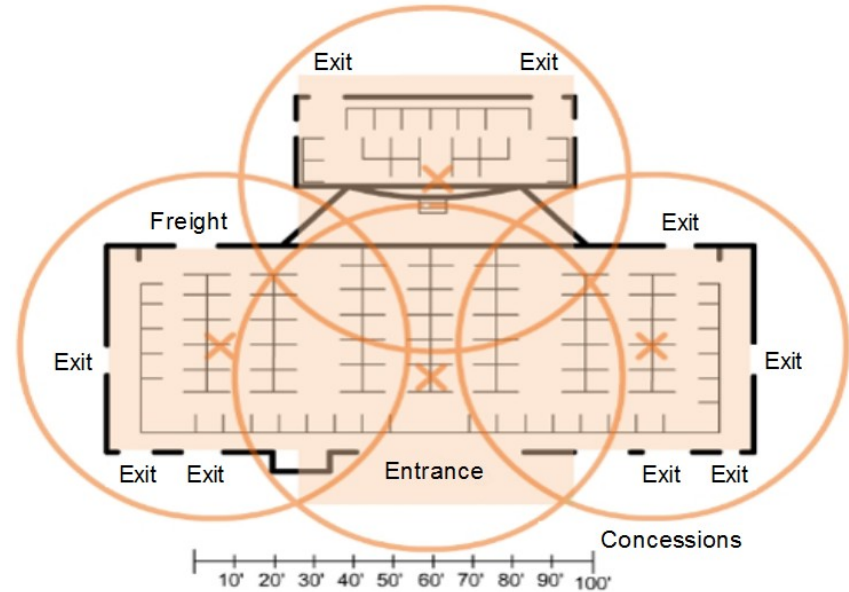
# Channel Management

## Plan a WLAN Deployment

The number of users supported by a WLAN depends on the following:

- The geographical layout of the facility
- The number of bodies and devices that can fit in a space
- The data rates users expect
- The use of non-overlapping channels by multiple APs and transmit power settings

When planning the location of APs, the approximate circular coverage area is important.



## 12.6 WLAN Threats

## Video – WLAN Threats

This video will cover the following:

- Interception of Data
- Wireless Intruders
- Denial of Service (DoS) Attacks
- Rogue APs

## WLAN Threats

# Wireless Security Overview

A WLAN is open to anyone within range of an AP and the appropriate credentials to associate to it.

Attacks can be generated by outsiders, disgruntled employees, and even unintentionally by employees. Wireless networks are specifically susceptible to several threats, including the following:

- Interception of data
- Wireless intruders
- Denial of Service (DoS) Attacks
- Rogue APs

# WLAN Threats

## DoS Attacks

Wireless DoS attacks can be the result of the following:

- Improperly configured devices
- A malicious user intentionally interfering with the wireless communication
- Accidental interference

To minimize the risk of a DoS attack due to improperly configured devices and malicious attacks, harden all devices, keep passwords secure, create backups, and ensure that all configuration changes are incorporated off-hours.



# Rogue Access Points

- A rogue AP is an AP or wireless router that has been connected to a corporate network without explicit authorization and against corporate policy.
- Once connected, the rogue AP can be used by an attacker to capture MAC addresses, capture data packets, gain access to network resources, or launch a man-in-the-middle attack.
- A personal network hotspot could also be used as a rogue AP. For example, a user with secure network access enables their authorized Windows host to become a Wi-Fi AP.
- To prevent the installation of rogue APs, organizations must configure WLCs with rogue AP policies and use monitoring software to actively monitor the radio spectrum for unauthorized APs.

# Man-in-the-Middle Attack

In a man-in-the-middle (MITM) attack, the hacker is positioned in between two legitimate entities in order to read or modify the data that passes between the two parties. A popular wireless MITM attack is called the “evil twin AP” attack, where an attacker introduces a rogue AP and configures it with the same SSID as a legitimate AP.

Defeating a MITM attack begins with identifying legitimate devices on the WLAN. To do this, users must be authenticated. After all of the legitimate devices are known, the network can be monitored for abnormal devices or traffic.

# 12.7 Secure WLANs

## Video – Secure WLANs

This video will cover the following:

- SSID Cloaking
- MAC Address Filtering
- Authentication and Encryption Systems (Open Authentication and Shared Key Authentication)

# SSID Cloaking and MAC Address Filtering

To address the threats of keeping wireless intruders out and protecting data, two early security features were used and are still available on most routers and APs:

## **SSID Cloaking**

- APs and some wireless routers allow the SSID beacon frame to be disabled. Wireless clients must be manually configured with the SSID to connect to the network.

## **MAC Address Filtering**

- An administrator can manually permit or deny clients wireless access based on their physical MAC hardware address. In the figure, the router is configured to permit two MAC addresses. Devices with different MAC addresses will not be able to join the 2.4GHz WLAN.

# 802.11 Original Authentication Methods

The best way to secure a wireless network is to use authentication and encryption systems. Two types of authentication were introduced with the original 802.11 standard:

### **Open system authentication**

- No password required. Typically used to provide free internet access in public areas like cafes, airports, and hotels.
- Client is responsible for providing security such as through a VPN.

### **Shared key authentication**

- Provides mechanisms, such as WEP, WPA, WPA2, and WPA3 to authenticate and encrypt data between a wireless client and AP. However, the password must be pre-shared between both parties to connect.

# Shared Key Authentication Methods

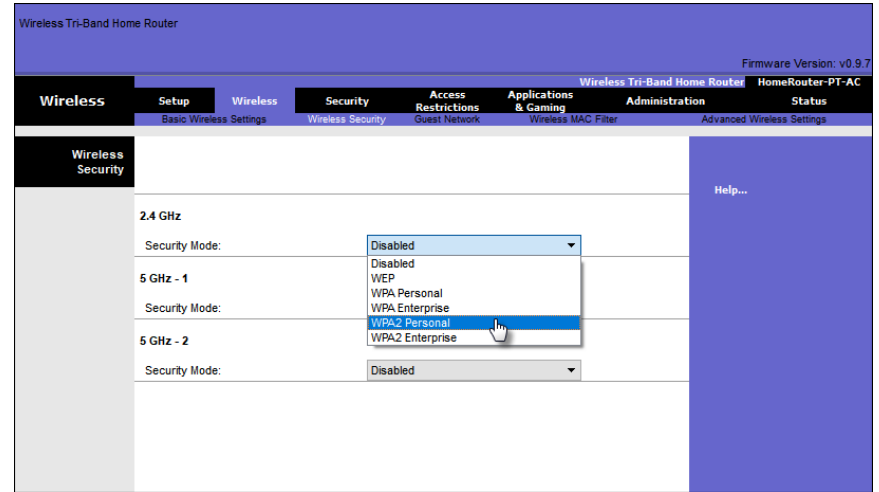
There are currently four shared key authentication techniques available, as shown in the table.

Authentication Method	Description
Wired Equivalent Privacy (WEP)	The original 802.11 specification designed to secure the data using the Rivest Cipher 4 (RC4) encryption method with a static key. WEP is no longer recommended and should never be used.
Wi-Fi Protected Access (WPA)	A Wi-Fi Alliance standard that uses WEP but secures the data with the much stronger Temporal Key Integrity Protocol (TKIP) encryption algorithm. TKIP changes the key for each packet, making it much more difficult to hack.
WPA2	It uses the Advanced Encryption Standard (AES) for encryption. AES is currently considered the strongest encryption protocol.
WPA3	This is the next generation of Wi-Fi security. All WPA3-enabled devices use the latest security methods, disallow outdated legacy protocols, and require the use of Protected Management Frames (PMF).

# Authenticating a Home User

Home routers typically have two choices for authentication: WPA and WPA2, with WPA 2 having two authentication methods.

- **Personal** – Intended for home or small office networks, users authenticate using a pre-shared key (PSK). Wireless clients authenticate with the wireless router using a pre-shared password. No special authentication server is required.
- **Enterprise** – Intended for enterprise networks. Requires a Remote Authentication Dial-In User Service (RADIUS) authentication server. The device must be authenticated by the RADIUS server and then users must authenticate using 802.1X standard, which uses the Extensible Authentication Protocol (EAP) for authentication.



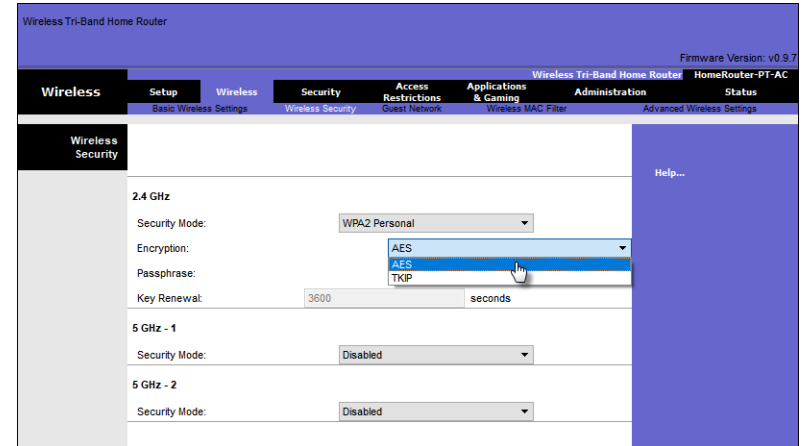


# Secure WLANs

## Encryption Methods

WPA and WPA2 include two encryption protocols:

- **Temporal Key Integrity Protocol (TKIP)** – Used by WPA and provides support for legacy WLAN equipment. Makes use of WEP but encrypts the Layer 2 payload using TKIP.
- **Advanced Encryption Standard (AES)** – Used by WPA2 and uses the Counter Cipher Mode with Block Chaining Message Authentication Code Protocol (CCMP) that allows destination hosts to recognize if the encrypted and non-encrypted bits have been altered.



# Secure WLANs

## Authentication in the Enterprise

Enterprise security mode choice requires an Authentication, Authorization, and Accounting (AAA) RADIUS server.

There pieces of information are required:

- **RADIUS server IP address** – IP address of the server.
- **UDP port numbers** –UDP ports 1812 for RADIUS Authentication, and 1813 for RADIUS Accounting, but can also operate using UDP ports 1645 and 1646.
- **Shared key** – Used to authenticate the AP with the RADIUS server.

The screenshot displays the configuration interface for a Wireless Tri-Band Home Router. The page is titled "Wireless Security" and is part of a larger navigation menu that includes "Wireless", "Setup", "Security", "Access Restrictions", "Applications & Gaming", "Administration", and "Status". The "Wireless Security" section is currently active, showing settings for two frequency bands: 2.4 GHz and 5 GHz - 1.

For the 2.4 GHz band, the following settings are visible:

- Security Mode: WPA2 Enterprise
- Encryption: AES
- RADIUS Server: 10 . 10 . 10 . 100
- RADIUS Port: 1645
- Shared Secret: J#A] a3XQnq5KsJT
- Key Renewal: 3600 seconds

For the 5 GHz - 1 band, the following settings are visible:

- Security Mode: WPA2 Enterprise
- Encryption: AES

A "Help..." link is visible on the right side of the page.

**Note:** User authentication and authorization is handled by the 802.1X standard, which provides a centralized, server-based authentication of end users.

## Secure WLANs

# WPA 3

Because WPA2 is no longer considered secure, WPA3 is recommended when available. WPA3 Includes four features:

- **WPA3 – Personal** : Thwarts brute force attacks by using Simultaneous Authentication of Equals (SAE).
- **WPA3 – Enterprise** : Uses 802.1X/EAP authentication. However, it requires the use of a 192-bit cryptographic suite and eliminates the mixing of security protocols for previous 802.11 standards.
- **Open Networks** : Does not use any authentication. However, uses Opportunistic Wireless Encryption (OWE) to encrypt all wireless traffic.
- **IoT Onboarding** : Uses Device Provisioning Protocol (DPP) to quickly onboard IoT devices.

# 12.8 Module Practice and Quiz

## **Téma 12.1**

- Vysvětlete rozdíly mezi WPAN, WLAN, WMAN a WWAN.
- Proč si myslíte, že existuje tolik standardů 802.11?

## **Téma 12.2**

- Kdy by bylo vhodné použít autonomní AP a AP založené na radiči?
- Diskutujte o situaci, kdy je potřeba bezdrátový adaptér USB.

## **Téma 12.3**

- Kdy by byly vhodné režimy ad hoc a režimy infrastruktury?
- Jaký je rozdíl mezi BSS a ESS?
- Diskutujte o parametrech vyjednaných mezi AP a bezdrátovým klientem pro úspěšné přidružení.

## **Téma 12.4**

- Proč by organizace používala CAPWAP?
- Jaké možnosti poskytuje FlexConnect?

## **Téma 12.5**

- Jaké je řešení pro nasycení frekvenčního kanálu?

## **Téma 12.6**

- Diskutujte o běžných útocích proti bezdrátovým sítím.
- Jaké jsou způsoby, jak zmírnit tyto útoky?

## **Téma 12.7**

- Diskutujte o silných a slabých stránkách různých metod ověřování pomocí sdíleného klíče.
- Pokud je to možné, zobrazte nastavení zabezpečení bezdrátové sítě na přístupovém bodu.

# What did I learn in this module?

- A Wireless LANs (WLANs) are based on IEEE standards and can be classified into four main types: WPAN, WLAN, WMAN, and WWAN.
- Wireless technology uses the unlicensed radio spectrum to send and receive data. Examples of this technology are Bluetooth, WiMAX, Cellular Broadband, and Satellite Broadband.
- WLAN networks operate in the 2.4 GHz frequency band and the 5 GHz band.
- The three organizations influencing WLAN standards are the ITU-R, the IEEE, and the Wi-Fi Alliance.
- CAPWAP is an IEEE standard protocol that enables a WLC to manage multiple APs and WLANs.
- DTLS is a protocol provides security between the AP and the WLC.
- Wireless LAN devices have transmitters and receivers tuned to specific frequencies of radio waves to communicate. Ranges are then split into smaller ranges called channels: DSSS, FHSS, and OFDM.
- The 802.11b/g/n standards operate in the 2.4 GHz to 2.5GHz spectrum. The 2.4 GHz band is subdivided into multiple channels. Each channel is allotted 22 MHz bandwidth and is separated from the next channel by 5 MHz.
- Wireless networks are susceptible to threats, including: data interception, wireless intruders, DoS attacks, and rogue APs.
- To keep wireless intruders out and protect data, two early security features are still available on most routers and APs: SSID cloaking and MAC address filtering.
- There are four shared key authentication techniques available: WEP, WPA, WPA2, and WPA3.

