

Evening Drawing

(VV052)

Week 1: The Basics

Helena Lukášová, Hana Pokojná



Welcome

Topics we will explore this semester:

- 1) Basics (line of action, gravity, intuitive drawing)
 - 2) Proportions (body)
 - 3) Portraits and profiles
 - 4) Surface anatomy
 - 5) Lightning
 - 6) Colour
- And more...

Materials

- 1) Paper
- 2) Charcoal: natural or manufactured
- 3) Graphite
- 4) Kneaded eraser (putty rubber)
- 5) Masking tape (paper tape to hold your papers)
- 6) Fixing spray (can also be hairspray)

Places to shop:

INDIGES, Štefánikova 19a, 602 00 Brno-střed,
<https://www.provytvarniky.cz/kontakt>

Výtvarné potřeby CREATIVE, Husova 255, 602 00 Brno-střed,
<https://www.art-creative.cz/>

KOH-I-NOOR HARDTMUTH Trade a.s., Koblížná 27/5 and Masarykova 427/31, 602 00 Brno-střed, <https://www.koh-i-noor.cz/>

Shopping center Vágner on Česká street in the top floor

Intuitive Measurements

Sometimes, we get too preoccupied with details; however, the first step is blocking out the general shapes and movements to get the 'feeling' of the object right.

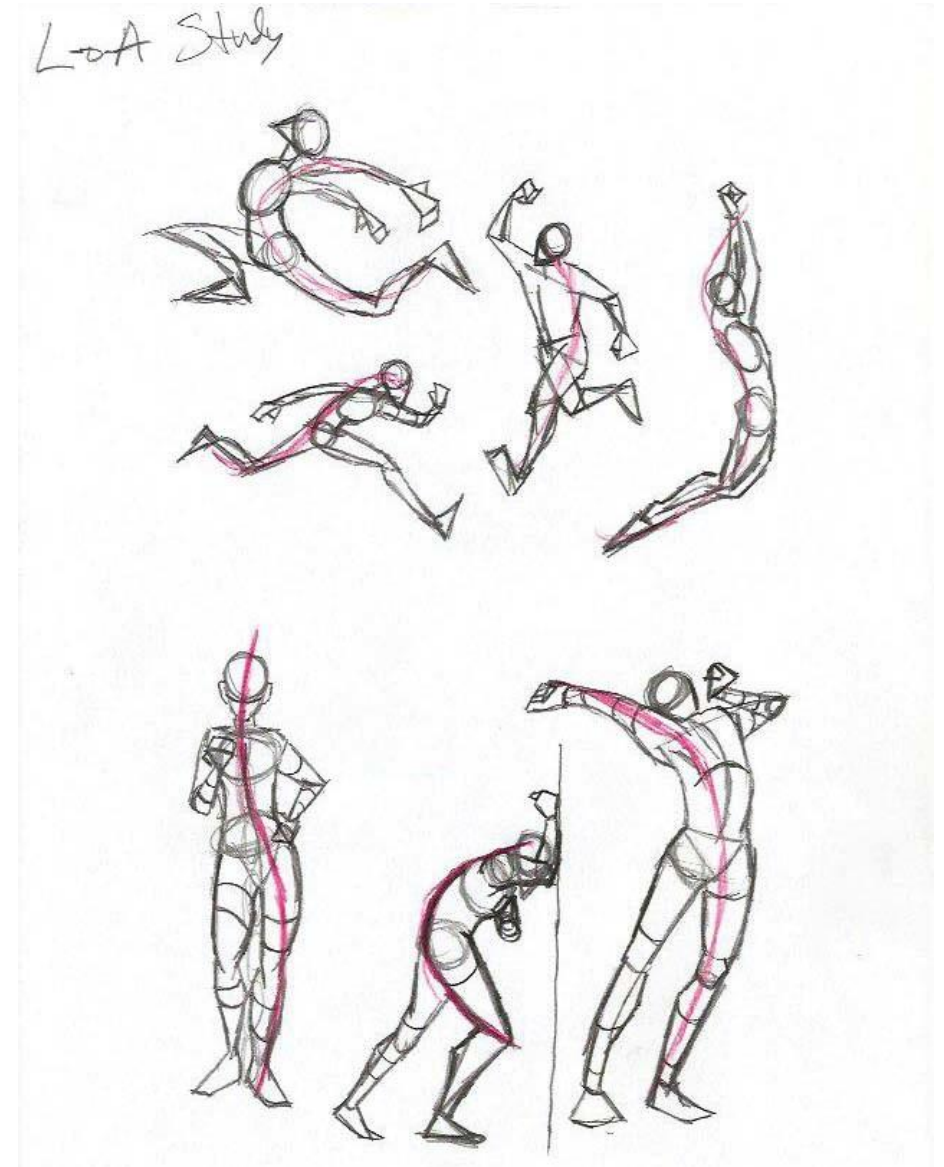
A great start is intuitive measurement -> practice through drawing movement and short poses so you don't have time to overthink the drawing process.

Focus on capturing the 'action', often in the folds and angular areas such as knees, elbows...

The Line of Action

Drawn with gesture, starting with head, going through body (down the spine) into one of the lower limbs

On the right is an example of the Line of action in a figure (Andrew Capps, Artstation).



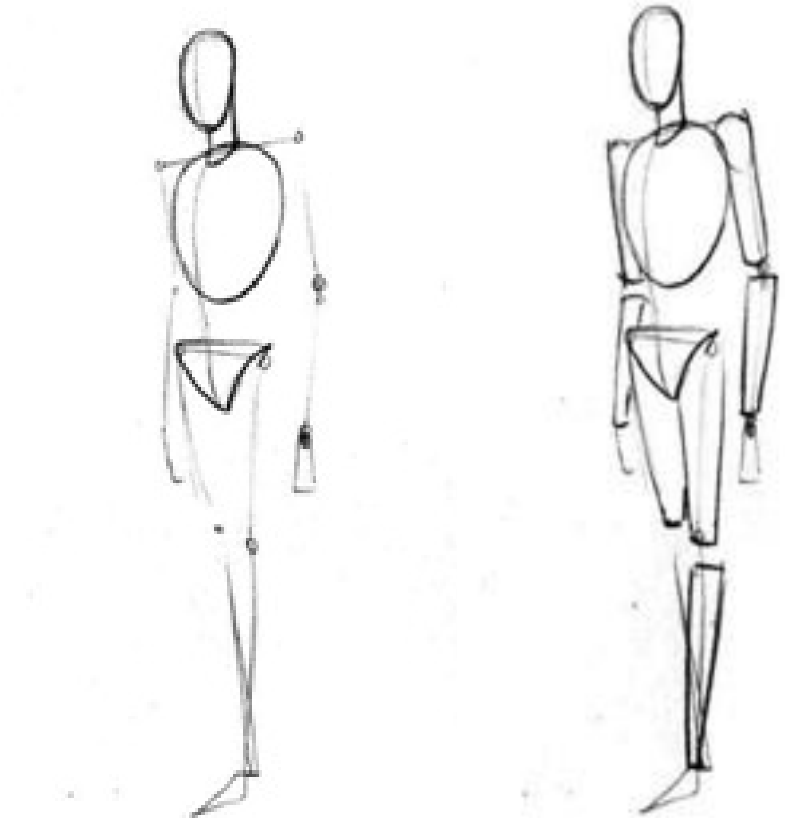
Human Figure Basics

Add **basic geometric shapes** for main body parts.

- head, torso, knees, shoulders (no details!!!)

You will be adding '**meat on the bones**', still in simple shapes (e.g. cylinders), onto this sketch to represent volume.

Afterwards, connect shapes with curves.

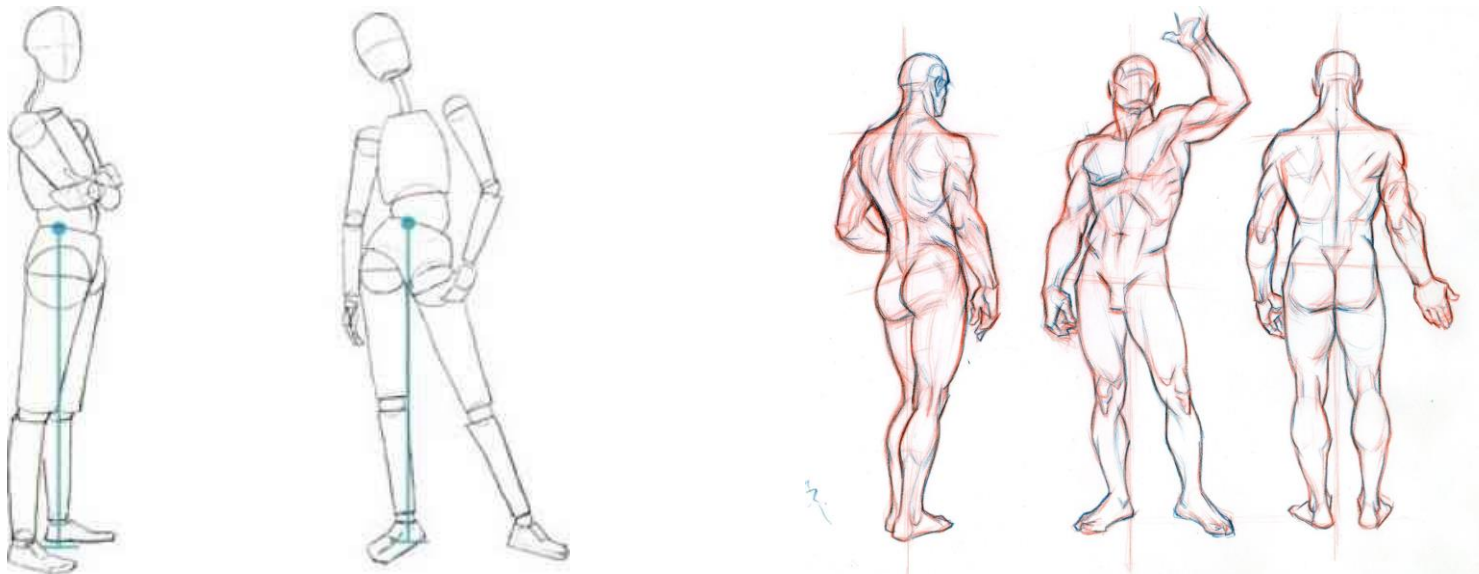


[Read More + Source: http://www.kokuyocamlin.com/blog/the-basics-of-human-figure-drawing.html](http://www.kokuyocamlin.com/blog/the-basics-of-human-figure-drawing.html)

Gravity and Balance

Gravity makes the drawing 'look right'.

Tip: The chin is above the heel and carries the weight of the body.



Sources + further reading: <https://www.joshuanava.biz/human-figure/weight-balance-movement.html>

<https://medium.com/@GetScriba/beginner-s-guide-importance-of-proper-body-proportions-and-how-to-get-them-right-31d94d2f75c7>

Practice

To practice life drawing outside of class:

- 1) Get someone to pose for you
- 2) Draw people in public
- 3) There are MANY statues around Brno
- 4) Drawing clubs, like the NVK at MUNI (<https://www.muni.cz/studenti/studentske-spolky/neidentifikovatelný-klub-vytvarniku-muni>)
- 5) Website that has life-drawing material:

<https://line-of-action.com/>