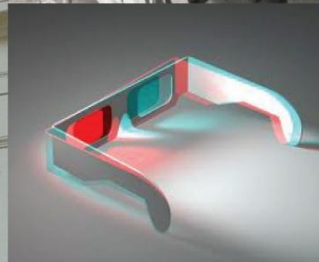
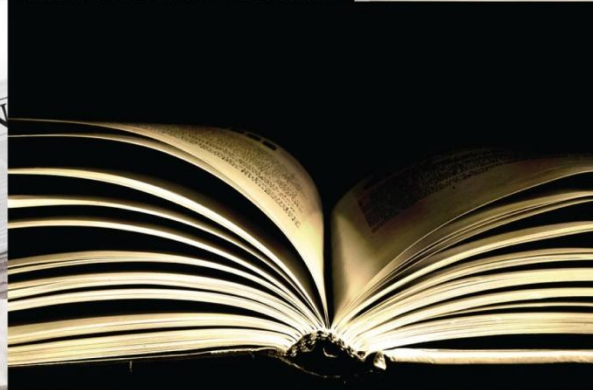
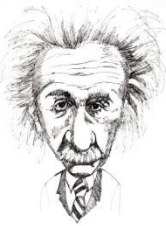
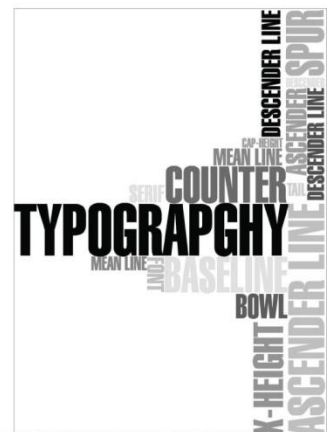
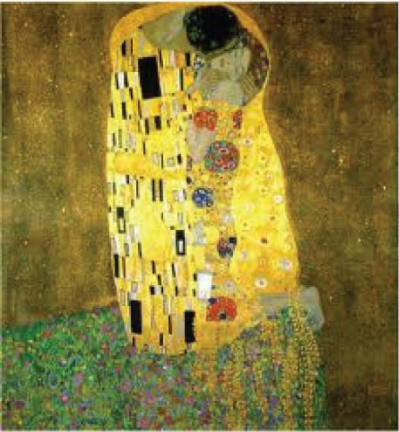


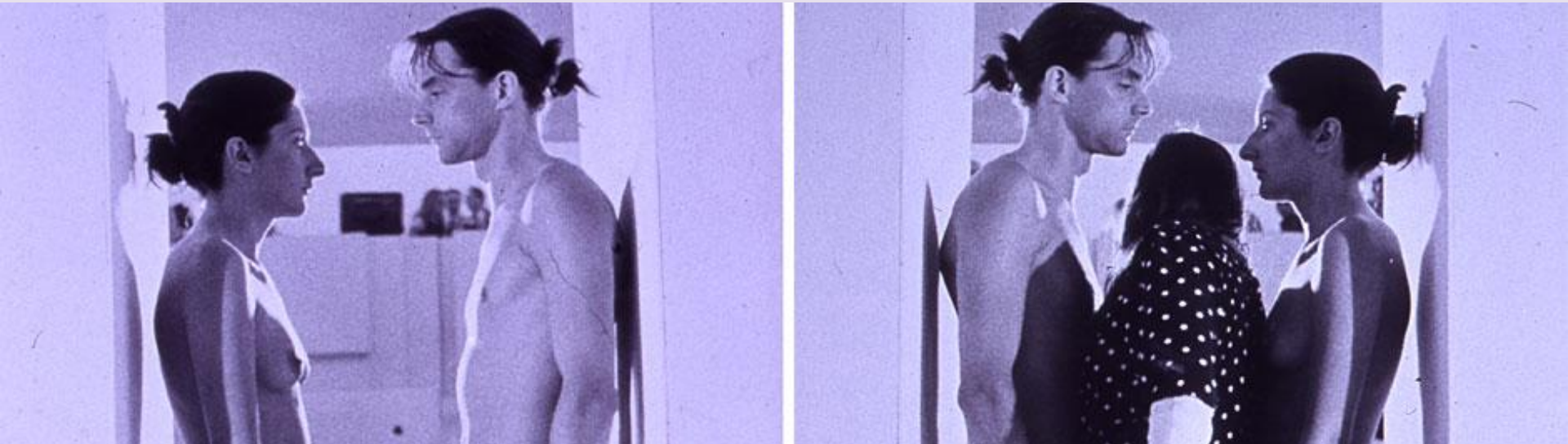


**Konceptuální a
intermediální tvorba**

Co jsou to média?



Co jsou to média?



Média jsou

prostředek, produkt a předmět lidské komunikace



Marina Abramovič, Imponderabilia, 1977

Co jsou to média?

Komunikace mezi odesílatelem (zdroj) a příjemcem (uživatel)

TV Buddha, Nam June Paik, 1974
Closed Circuit video installation with bronze sculpture

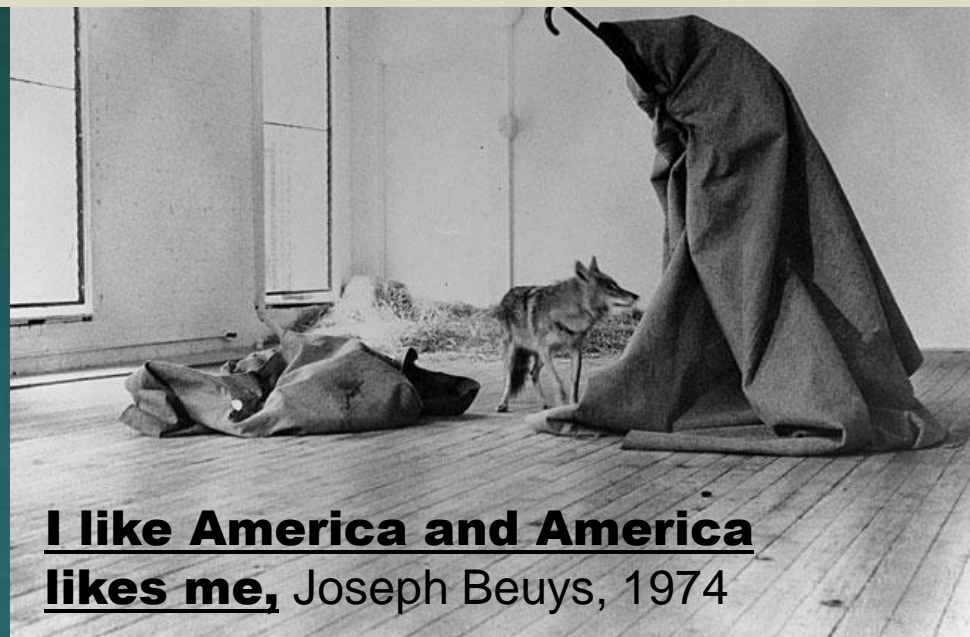
Konceptuální umění

Marcel Duchamp
Joseph Beuys
Joseph Kosuth
Sol le Witt
Fluxus

Idea, koncept
či myšlenka
je sama o sobě
uměním.
Rezignace
na realizaci díla.

**Konceptuální umění je druhem
umění, jehož materiálem jsou
myšlenky.**

Harry Flynt (Fluxus)



Abstraktní umění

Pop art

Konceptuální umění

Land art

Happening, performance

Videoart

Aktivismus



Fontána, Marcel Duchamp, 1917



chair, n hence v; chaise (longue) and chaise;
(ix) cathedra, cathedra (adj) and n, cathedrae;
element: *chaise*, *chaise*, q.v. sup.

1. *Chaise*, a seat (cf *Chaise*, to sit, and
sit, *Chaise*, combines with *latus*, down (cf the prefix
lat-), to form *chaise*, a backed, four-legged,
often two-armed seat, whence *L. cathedra*, LL
bishop's chair, ML professor's chair, hence dignity,
as in 'to speak *ex cathedra*', as *latus*—or as if
from—a professor's chair, hence with authority.
L. cathedra has LL-ML adj *cathedrae*—see sup
CATHEDRAL; and the secondary ML adj *cathedrae*,
whence *E. legal cathedrae*.

One and Three Chairs
Joseph Kosuth, 1970

Konceptuální umění



FIVE WORDS IN GREEN NEON


MEDIUM IS THE MESSAGE

Médium je poselství: médium — bez ohledu na nabízený obsah — samo svým charakterem vypovídá o společnosti, v níž operuje a o lidech, kteří si je osvojili a používají je.

**WHAT ARE
YOU
LOOKING AT?**



Banksy

A black car is shown in motion, blurred horizontally, driving on a road. The car's rear lights are illuminated, appearing as red streaks. The background features green trees on the left and a light-colored wall on the right. The overall scene is captured with a shallow depth of field and motion blur, emphasizing speed.

MÁŠ NA MÍŇ!

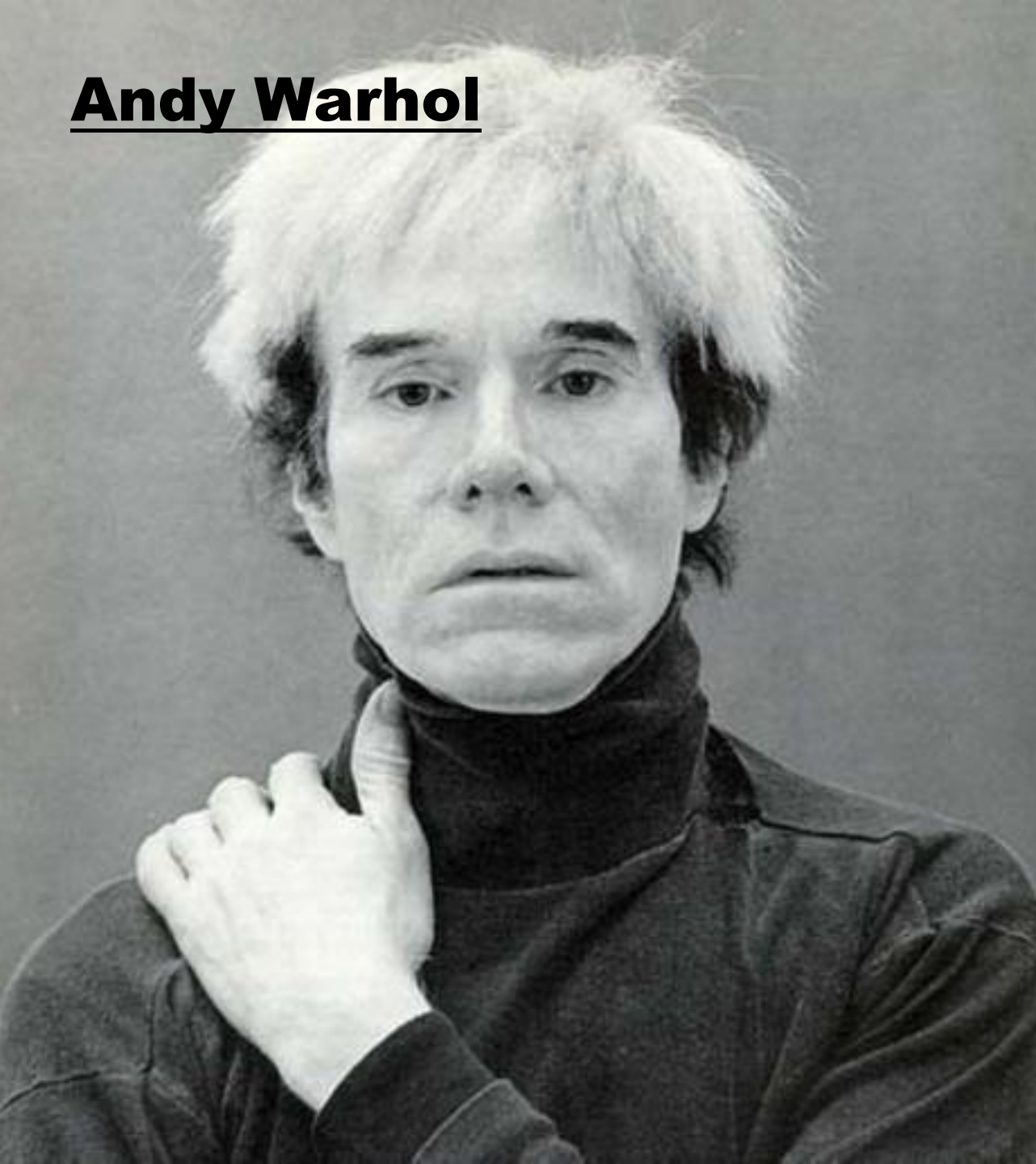
Autoportrét a stylizace



Marcel Duchamp



Andy Warhol



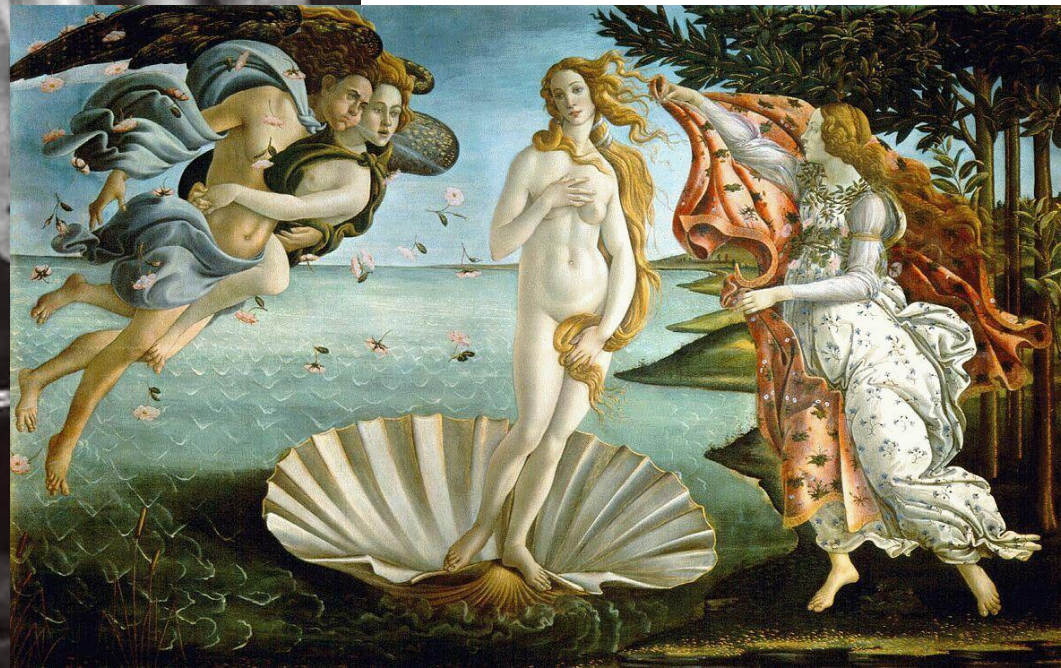
Cindy Sherman



Citace



Joel Peter Witkin
Sandro Boticelli



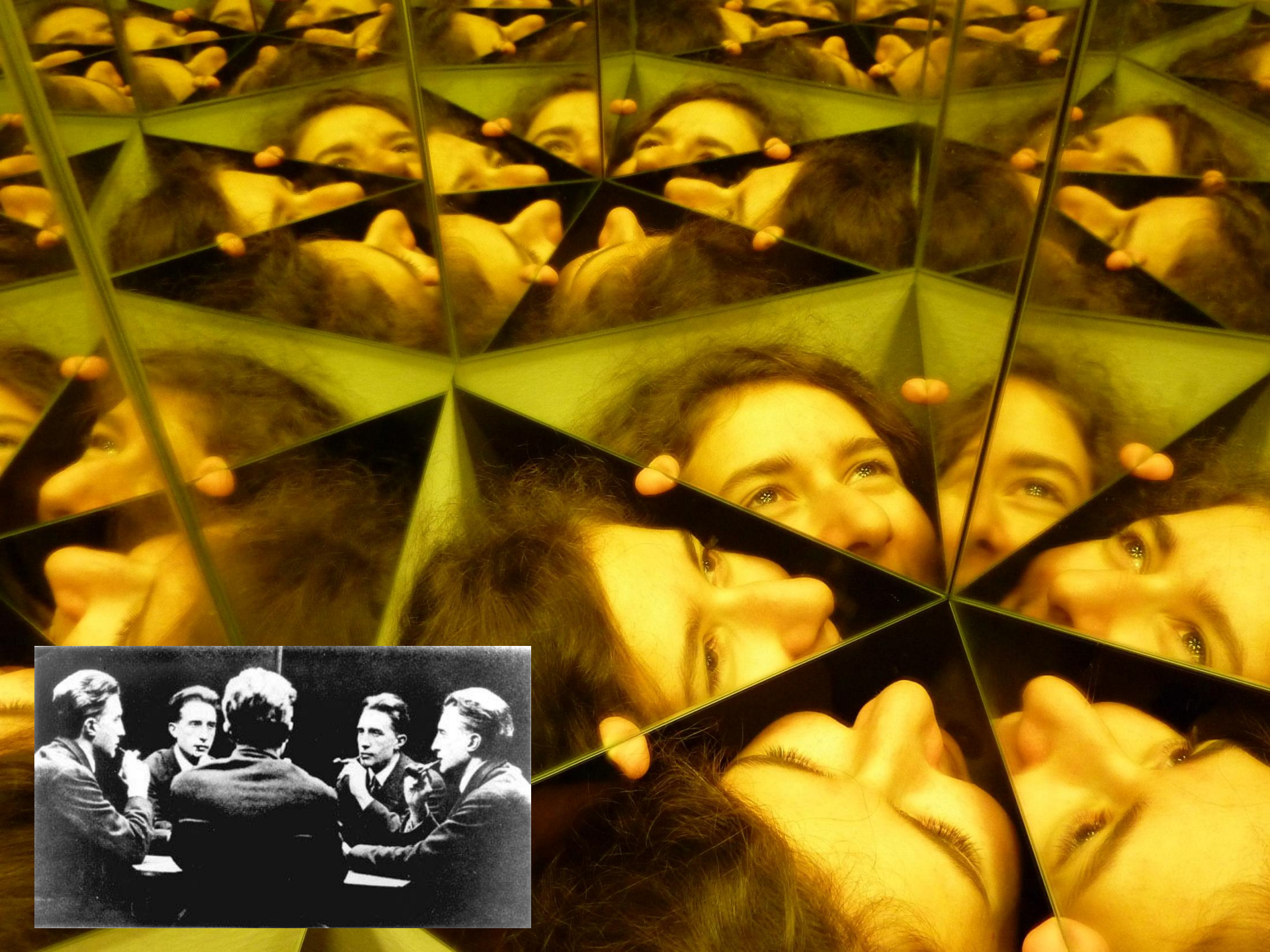


Man
Ray



Cindy Sherman, Jean Fouquet







THE HITCHHIKER'S GUIDE TO THE GALAXY



directed by GARTH JENNINGS written by DOUGLAS ADAMS & Karey Kirkpatrick
based on book "HitchThe Hitchhiker's Guide to the Galaxy" by DOUGLAS ADAMS
starring MARTIN FREEMAN & MOS DEF & SAM ROCKWELL & ZOEY DESCHANEL
film producer by MARTIN VIGAS for FEVV067 Konceptuální a intermedialní tvorba I@FI MUNI 2012

DON'T PANIC
coming soon







INVESTICE DO ROZVOJE VZDĚLÁVÁNÍ

Projekt Studio digitálního sochařství a nových médií reg. č. CZ.1.07/2.2.00/28.0278 je spolufinancován Evropským sociálním fondem a státním rozpočtem České republiky