

Josef Hoffmann

Vienna Secession

Wiener Werkstätte

Birthhouse in Blatnice

MgA. Jana Malíková

Otto Wagner

Purpose, construction, poetry

Henry Sullivan

Form follows function





1897 Vienna Secession

Wagner, Olbrich, Hoffmann, Moser, Klimt





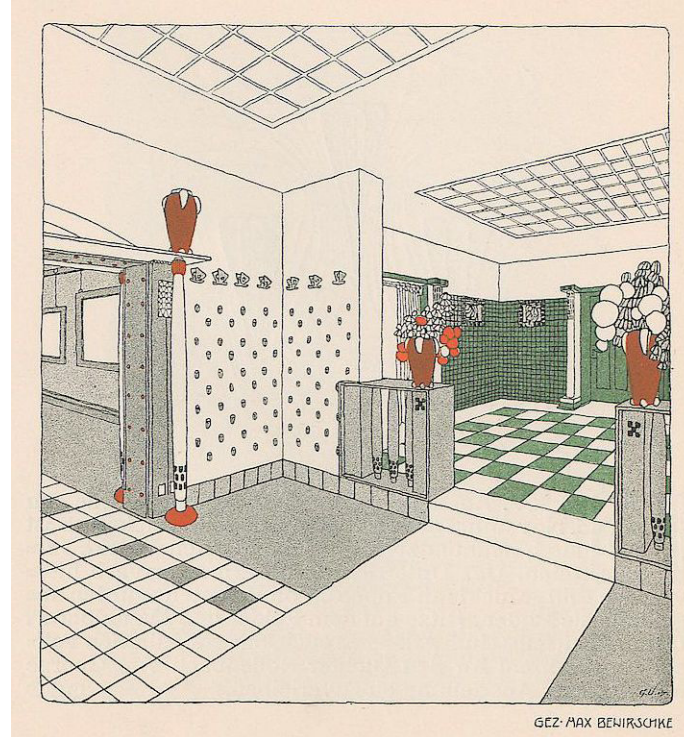
Ver Sacrum

Olbrich, Hoffmann, Moser, Klimt

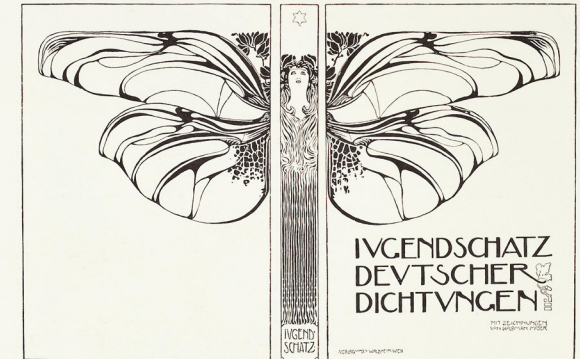
1898–1903



Ver Sacrum

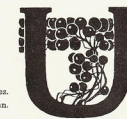


GEZ. MAX BENIRSCHKE



Buchsteinband v. Kolo Moser.

Für V. 8. gez.
J. Hoffmann.



ZEITSCHRIFTEN.

Ungemein reichhaltig ist die Januar-Nummer der Londoner Monatschrift „THE STUDIO“ ausgefallen. Wir heben aus der Fülle des Gebotenen besonders heraus: „GERALD MOIRAS“ Malereien und Bas-Reliefs (Lithografie) von Glesson White, „STEINLEN ALS LITHOGRAPHE“ (von Gabriel Mourey) mit charakteristischen Illustrationen der Arbeiten des Meisters, eine Federzeichnung von FORAIN, eine Facsimile-Zeichnung von FERNAND KINOPFF und colorierte kunstgewerbliche Vollblätter. Ganz besonders machen wir unsere Leser auf den Artikel „A MODERN ENGLISH COUNTRY HOUSE“ von dem Architekten Arnold Mitchell aufmerksam, weil die anschauliche Darstellung in Bild und Schrift eine dankenswerte Anregung für ein-

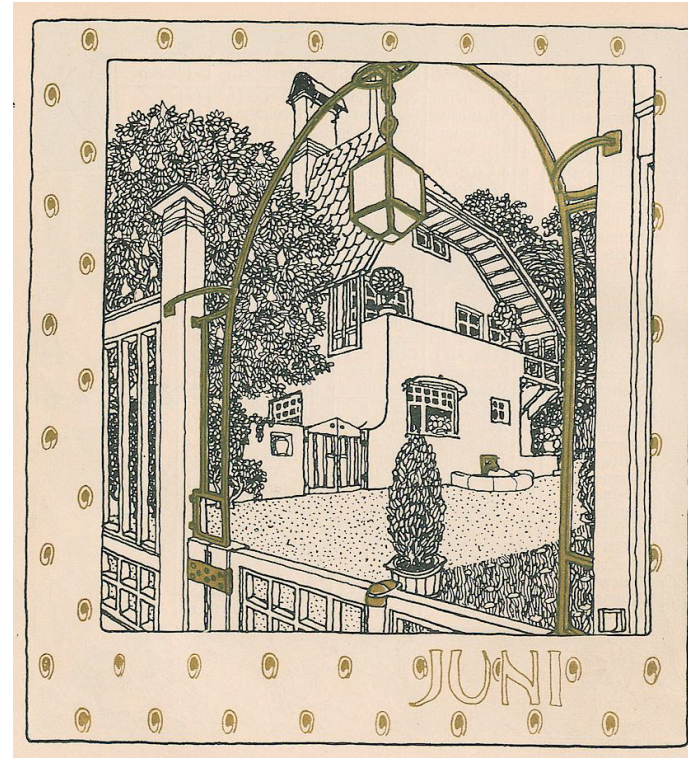
heimische Kreise des wohlhabenden Mittelstandes in Fragen geschmackvoller und einfacher Hauseinrichtung bietet.

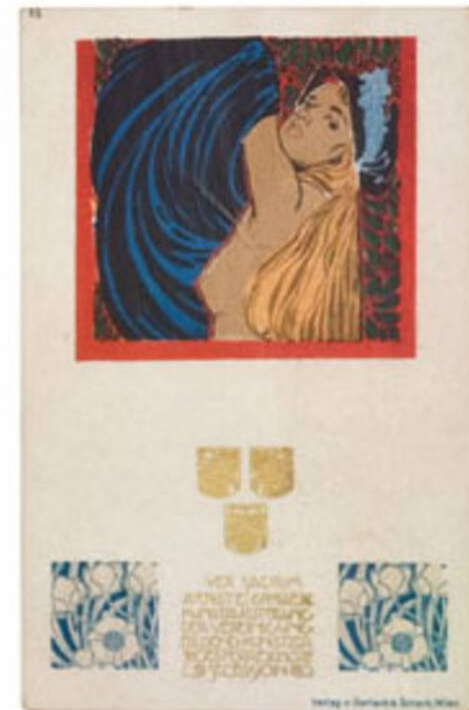
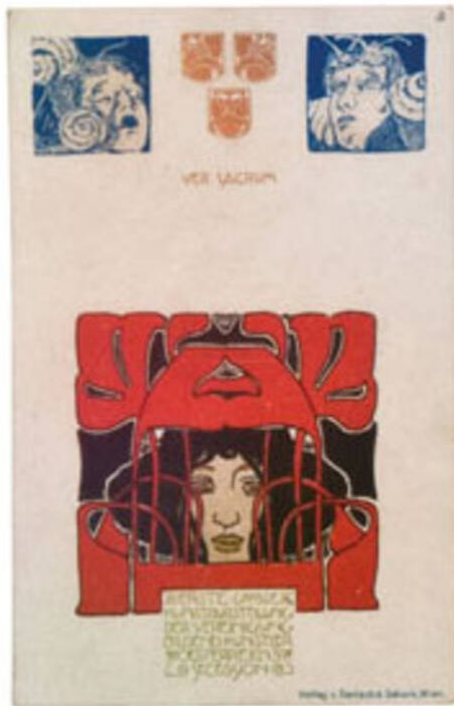
Diese Zeitschrift, welche uns mit der modernen Bewegung im Auslande wie keine andere Publication auf dem Laenderkreis hält, hat sich nicht nur in England, America und den Colonien eingebürgert, sondern ist auch bei uns in letzter Zeit ein gerngelesenes Organ. Seine fabelhafte Verbreitung beweist nur zu deutlich, auf wie hohem Gesamtniveau der Leserkreis in den angelsächsischen Culturländern



Buchschmuck für V. 8. gez. v. Kolo Moser.

Ver Sacrum

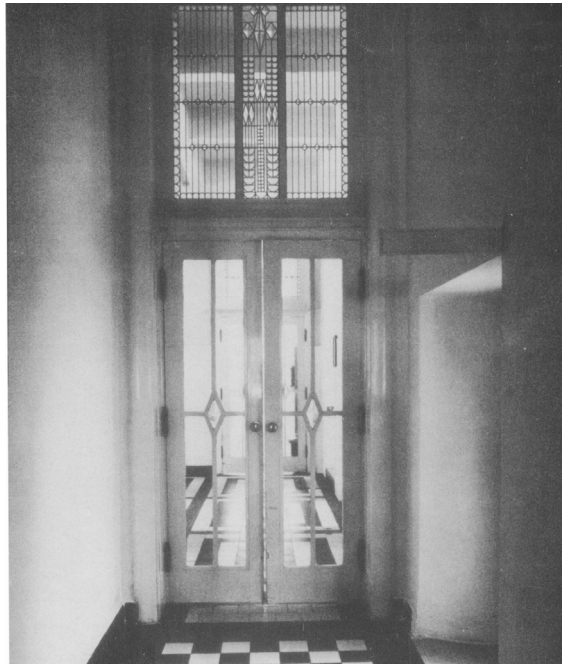




The Purkersdorf Sanatorium

1904–1905



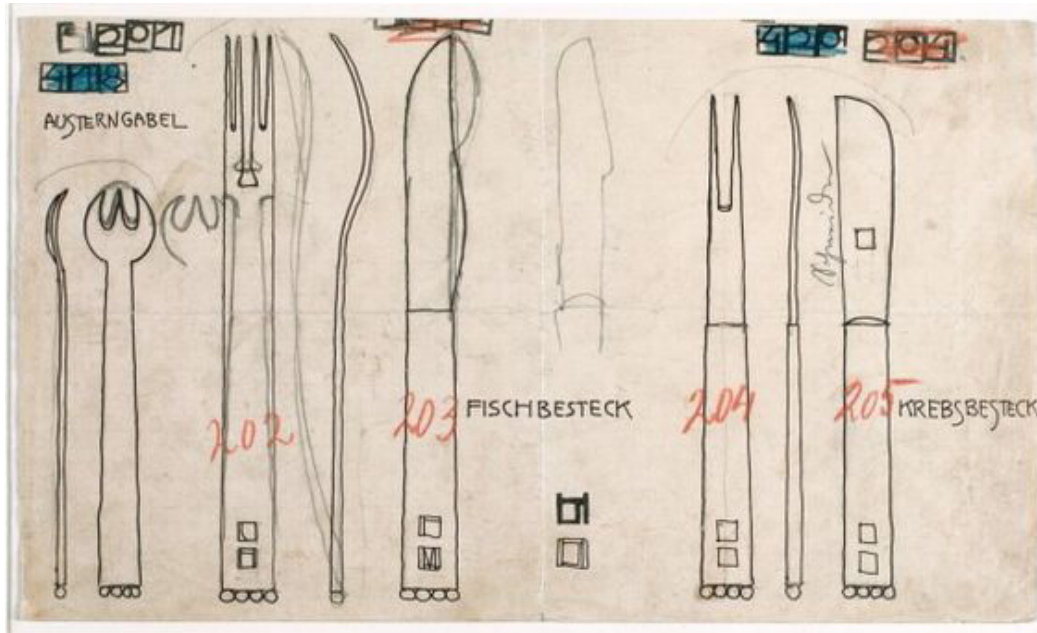


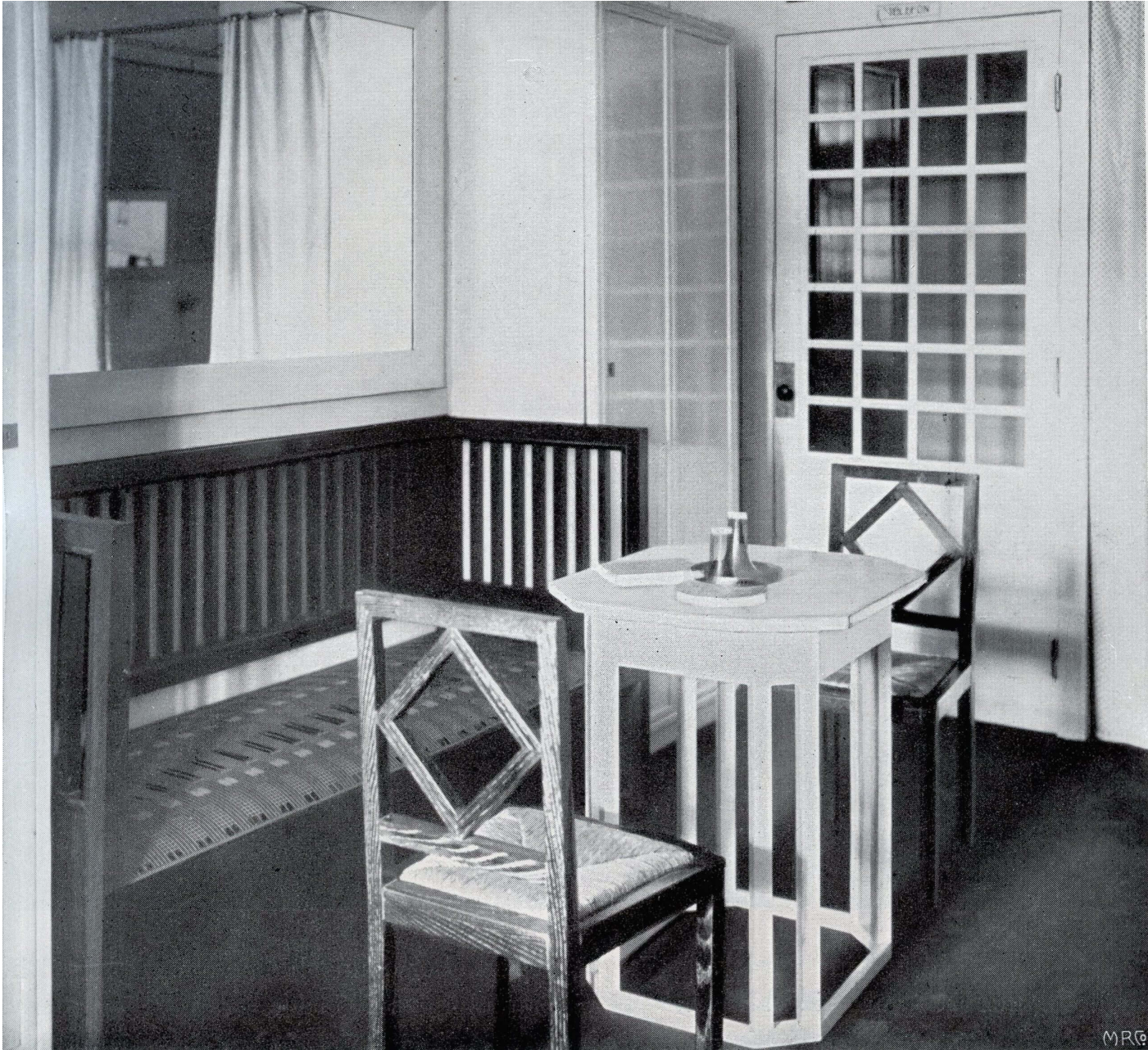


Cutlery set

Alessi / Rundes Model

700 Euro





Deutsche Kunst und
Dekoration, Band XVIII,
April-September 1906,
p.431
W £20,000-30,000
€29,300-44,000

M.R.C.



The Stoclet Palace in Brussels

1905–1911

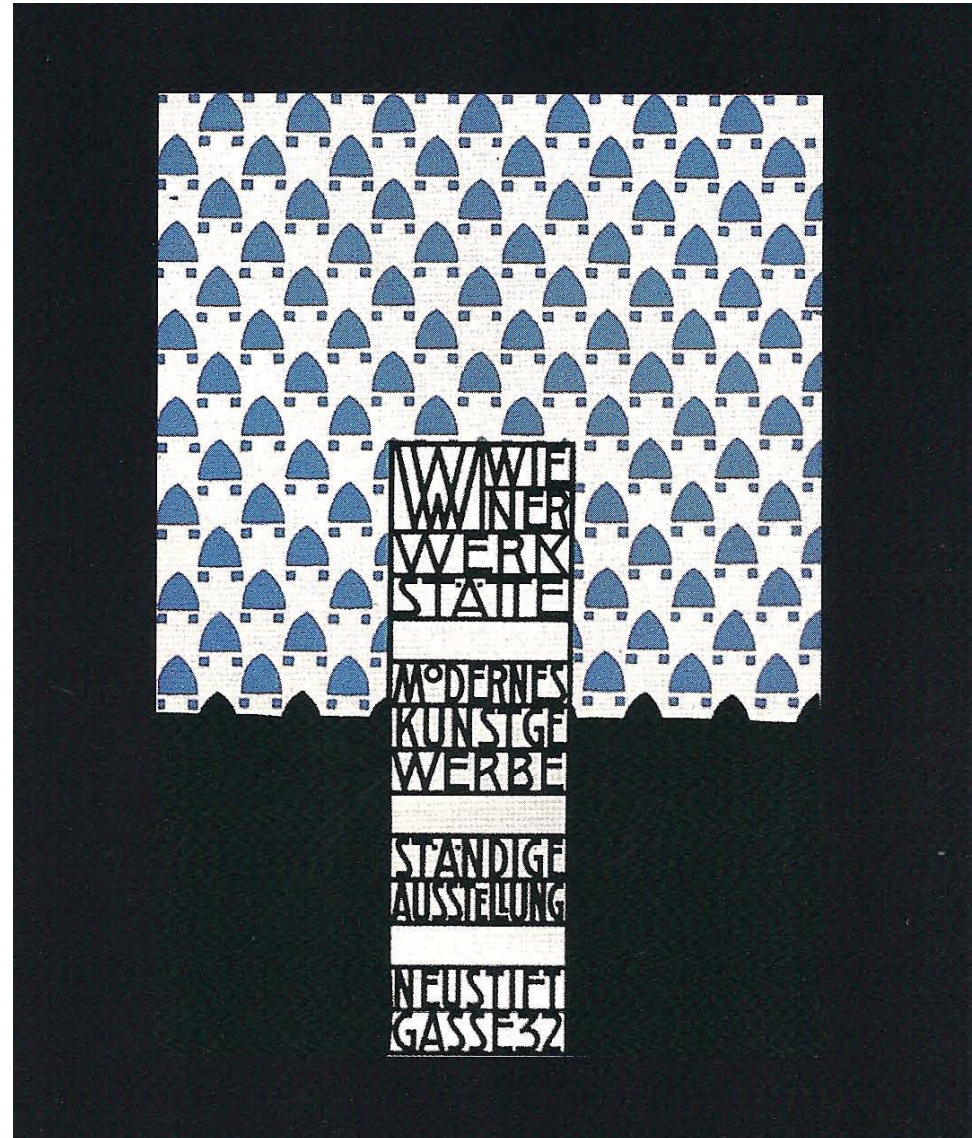
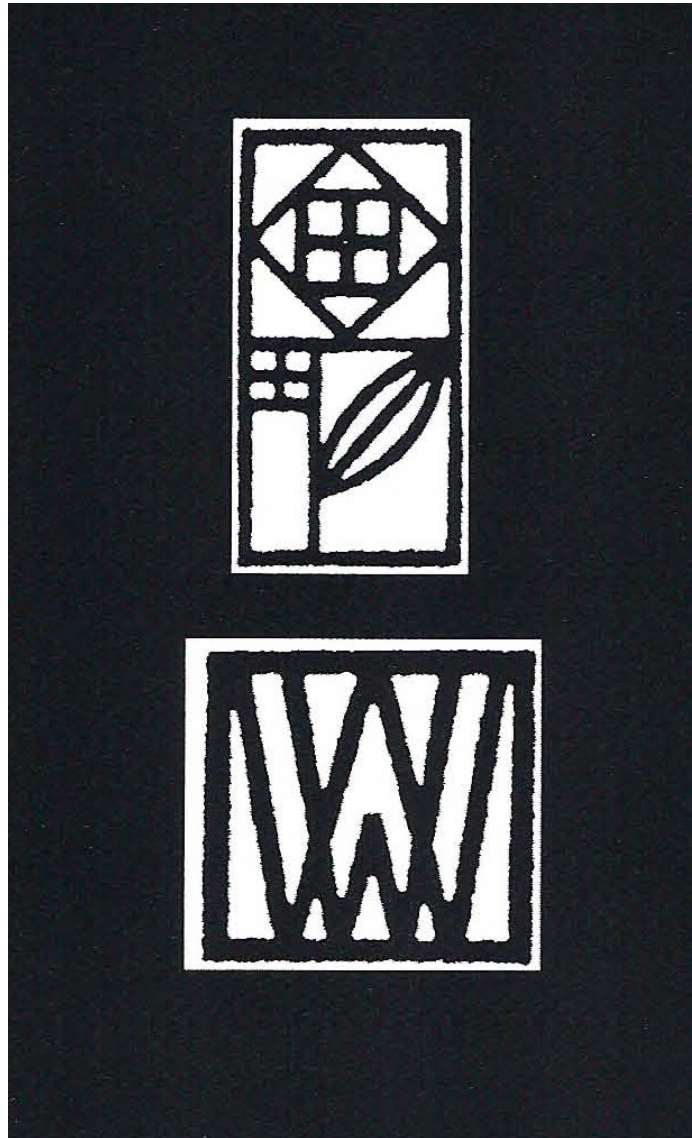






Wiener Werkstätte / workshops

1903-1932



DIE SCHUTZMARKE UND
DIE MONOGRAMME DER
WIENER WERKSTÄTTE
DIE REGISTRIERTE SCHUTZMARKE



DAS MONOGRAMM DER WIENER
WERKSTÄTTE



DIE MONOGRAMME D. ENTWERFER

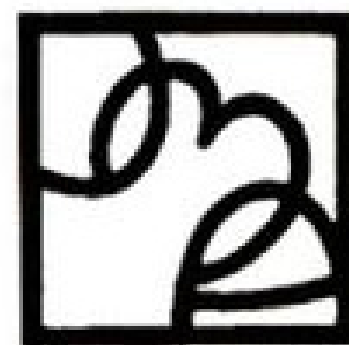
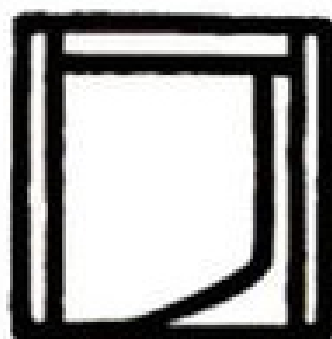
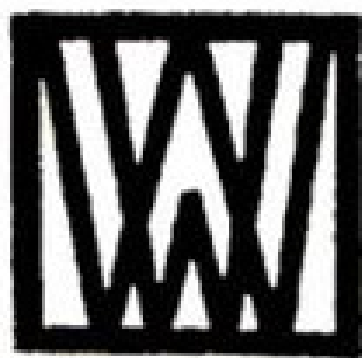


PROFESSOR JOSEF HOFFMANN



PROFESSOR KOLOMAN MOSER

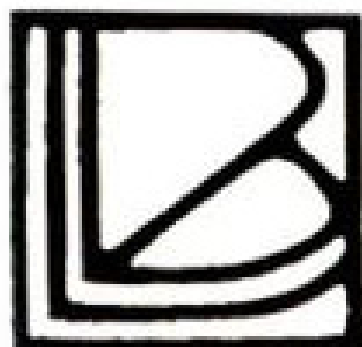




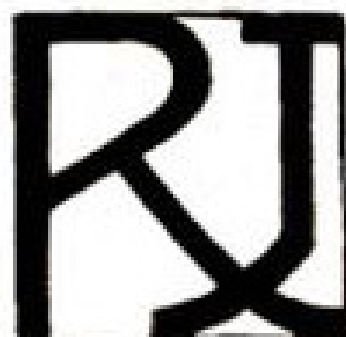
JOSEF HOFFMANN

KOLDMAN MOBER

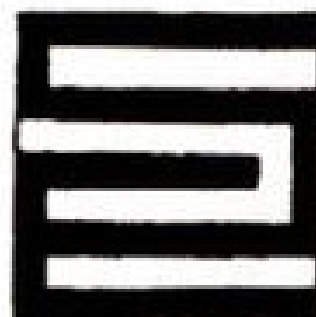
J. M. AUCHENTALLER



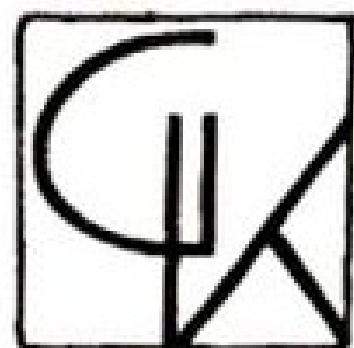
LEOPOLD BAUER



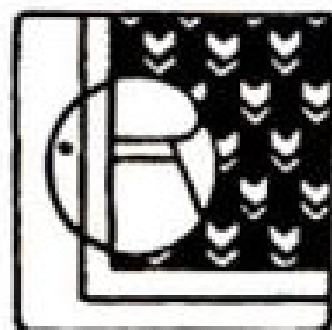
RUDOLF JETTHAR



ERNST STÖHR



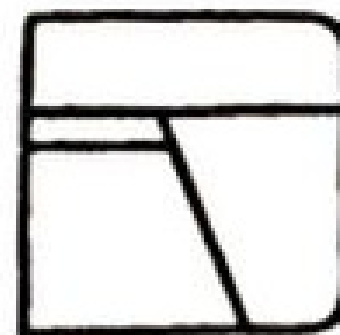
GUSTAV KLINT



ALFRED ROLLER



RUDOLF BACHER



ADOLF BÖHM



MoMA

Visit

Exhibitions and events

Art and artists

Store



Josef Hoffmann
Flatware
1905
On view
Gallery 504



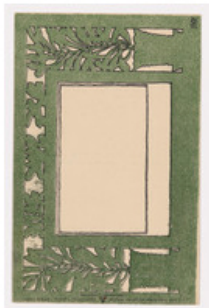
Josef Hoffmann
Vase
c. 1905
On view
Gallery 504



Josef Hoffmann
Sitzmaschine chair
with adjustable...
c. 1905
On view
Gallery 504



Josef Hoffmann
Liqueur glasses
c. 1908
On view
Gallery 504



Josef Hoffmann
Wiener Künstler-
Postkarte Serie 1/2
c. 1898



**Josef Hoffmann,
Leo Kainradl**
Wiener Künstler-
Postkarte Serie 2/1
c. 1898



**Koloman Moser,
Josef Hoffmann,...**
Wiener Künstler-
Postkarte Serie II / 9
1898



Josef Hoffmann
Wiener Künstler-
Postkarte Serie 33/2
c. 1898



Josef Hoffmann
Wiener Künstler-
Postkarte Serie 33/1
c. 1898



[The Collection](#) / [Modern and Contemporary Art](#)

Tea service

Designer [Josef Hoffmann](#) Austrian

Manufacturer [Wiener Werkstätte](#)

ca. 1910

📍 Not on view

Josef Hoffmann's designs before 1900 incorporated the curvilinear, organic motifs common to the then-fashionable Jugendstil and Art Nouveau styles. With the turn of the century, however, he abruptly abandoned them for a revolutionary new approach based on geometry, of which this tea service is an outstanding example. Its materials are lavish: hand-beaten silver, ebony, and semiprecious stones. Hoffmann, however, has integrated them with forms of uncompromising austerity: straight sides, domed lids, and squared-off handles. The only decoration, except for the inset jewels, is the single thin horizontal line of raised dots near the bottom of each container.

This service was made for the Wiener Werkstätte, the company of designers, artists, and craftsmen founded in Vienna in 1903 to produce luxury objects in the most advanced style. The set was purchased in 1910 by a San Francisco couple on their European wedding journey and descended from them to their grandson, the vendor to the Museum.



**Tray**

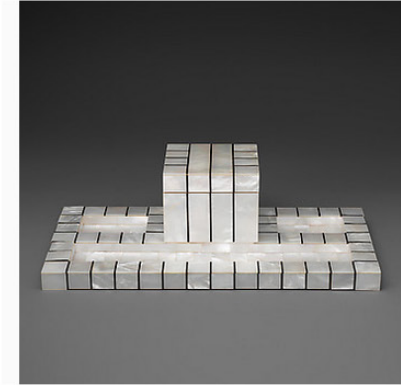
Josef Hoffmann
ca. 1910

**Sugar bowl with lid**

Josef Hoffmann
ca. 1910

**Table Lamp**

Josef Hoffmann
1904

**Ink stand**

Josef Hoffmann
ca. 1910

**Notepad holder**

Josef Hoffmann
ca. 1910

**Seal**

Josef Hoffmann
ca. 1910

**Pencil Holder**

Josef Hoffmann
ca. 1910

**Candle holder**

Josef Hoffmann
ca. 1910

**Brooch**

Josef Hoffmann
ca. 1910

**Bowl**

Josef Hoffmann
ca. 1925

**Armchair**

Josef Hoffmann
ca. 1914

**Bowl**

Josef Hoffmann
ca. 1920

**Bowl**

Josef Hoffmann
ca. 1920

**Bowl**

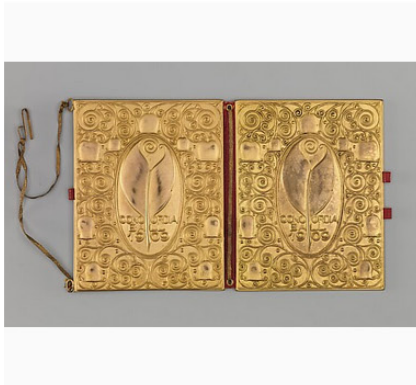
Josef Hoffmann
ca. 1920

**Tray**

Josef Hoffmann
ca. 1920

**Teacup and saucer**

Josef Hoffmann
ca. 1920

**Dance book**

Josef Hoffmann

1909

**Die Wiener Werkstätte, 1903-1928 :
modernes Kunstgewerbe und sein Weg**

Wiener Werkstätte

1929

**Centerpiece with Lapis Lazuli**

Josef Hoffmann

1906

**Wine goblet**

Josef Hoffmann

ca. 1910

**Flower basket**

Josef Hoffmann

ca. 1905

**Patrician**

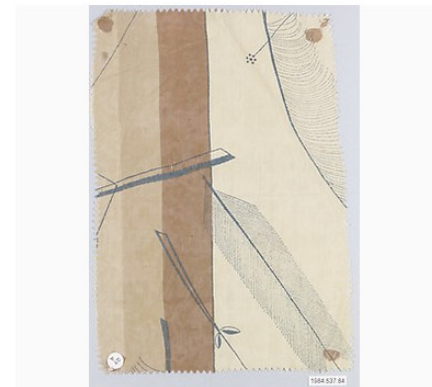
Josef Hoffmann

1917

**Textile sample**

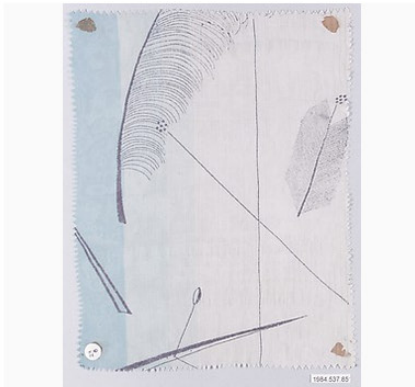
Josef Hoffmann

ca. 1920

**Textile sample**

Josef Hoffmann

ca. 1920

**Textile sample**

Josef Hoffmann

ca. 1920

**Textile sample**

Josef Hoffmann

ca. 1920

**Textile sample**

Josef Hoffmann

ca. 1920

**Textile sample**

Josef Hoffmann

ca. 1920

**Textile sample**

Josef Hoffmann

ca. 1920

**Textile sample**

Josef Hoffmann

ca. 1920

**Textile sample**

Josef Hoffmann

ca. 1920

**Textile sample**

Josef Hoffmann

ca. 1920

[The Collection](#) / [Drawings and Prints](#)

Easter Card

Josef Hoffmann Austrian

Publisher **Wiener Werkstätte**

1908

[📍 Not on view](#)



Josef Hoffmann

Series B Wine Glass by Lobmeyr



Josef Hoffmann
Sitzmaschine / reclining armchair





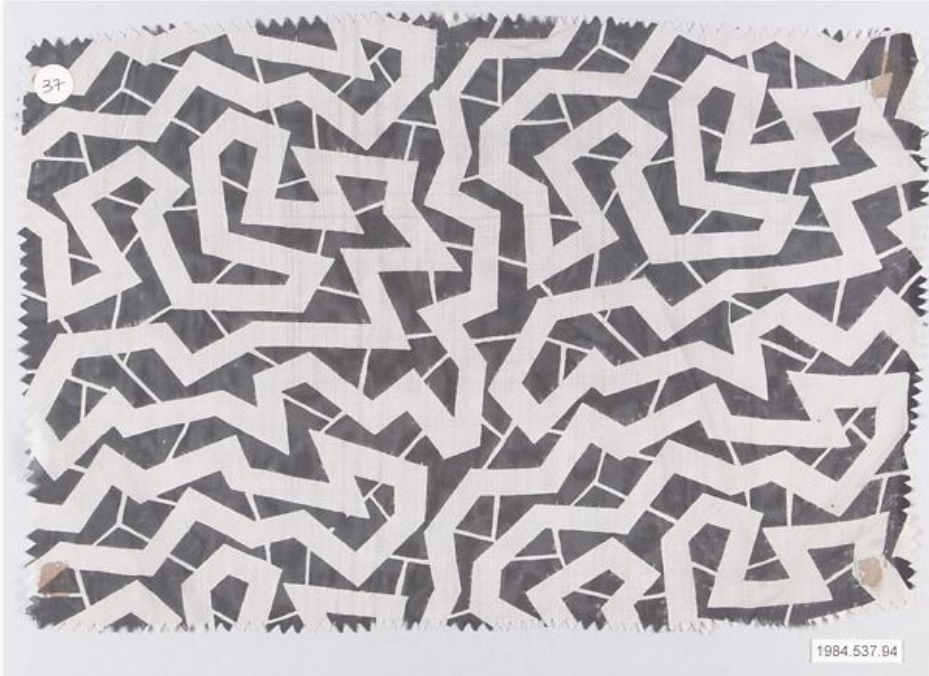








**Perforated metal dish stands
produced by Bieffeplast / Italy**



Josef Hoffmann

Birthhouse in Brtnice / Josef Hoffmann muzeum
1907–1911 reconstruction



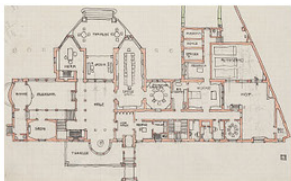
Inspiration by Josef Hoffmann

Promo items for Birthouse in Brtnice

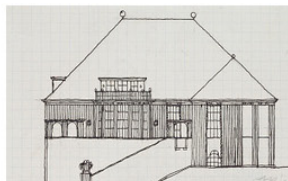
Printed promo material design

Workshop material design

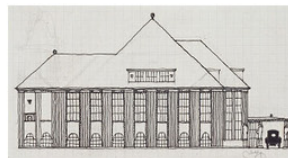




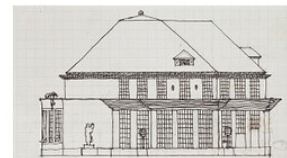
Josef Hoffmann
Půdorys paláce Stoclet v Bruselu
1905-1911



Josef Hoffmann
Přípravná studie vily Skywa-
Primavesi, Vídeň
1913



Josef Hoffmann
Přípravná studie vily Skywa-
Primavesi, Vídeň
1913



Josef Hoffmann
Přípravná studie vily Skywa-
Primavesi, Vídeň
1913



Josef Hoffmann
Pohledový návrh na palác Stoclet
v Bruselu
1905-1911



Josef Hoffmann
Návrh haly pro vilu Skywa-
Primavesi, Vídeň
1913



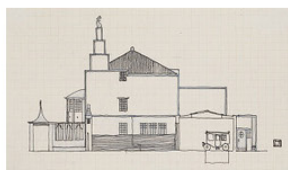
Josef Hoffmann
Návrh haly pro vilu Skywa-
Primavesi, Vídeň
1913



Josef Hoffmann
Studie ornamentů
1906



Josef Hoffmann
Studie dekorace pro kabaret
Fiedermaus ve Vídni
1908



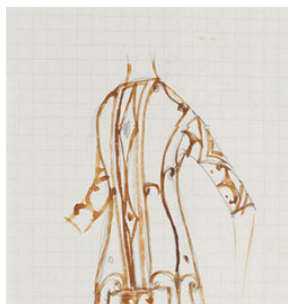
Josef Hoffmann
Pohledový návrh paláce Stoclet
v Bruselu
1905-1911



Josef Hoffmann
Pohledový návrh paláce Stoclet
v Bruselu
1905-1911



Josef Hoffmann
Pohledový návrh na palác Stoclet
v Bruselu
1905-1911

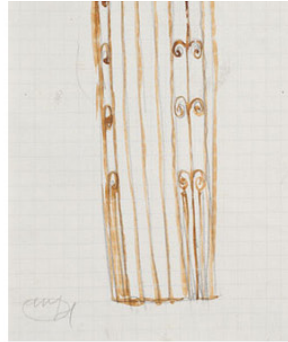


Josef Hoffmann
Pohledový návrh na palác Stoclet
v Bruselu
1905-1911





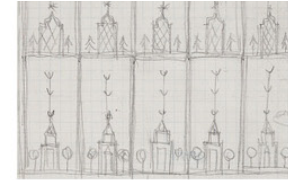
Josef Hoffmann
Studie ornamentu pro kabaret
Fledermaus ve Vídni
1908



Josef Hoffmann
Návrh na společenské šaty
kolem 1910



Josef Hoffmann
Návrh na společenské šaty
kolem 1910



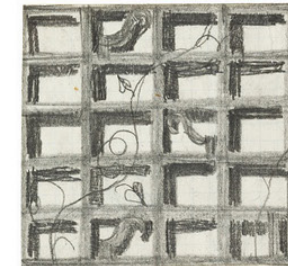
Josef Hoffmann
Návrh haly pro vilu Skywa-
Primavesi, Vídeň
1913



Josef Hoffmann
Studie ornamentů
1906



Josef Hoffmann
Studie geometrického ornamentu
1911



Josef Hoffmann
Studie ornamentu pro kabaret
Fledermaus ve Vídni
1908



Josef Hoffmann
Návrh ornamentu na tapetu
1911



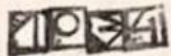
Josef Hoffmann
Studie ornamentů
1906



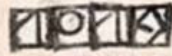
Josef Hoffmann
Studie geometrického ornamentu
1906



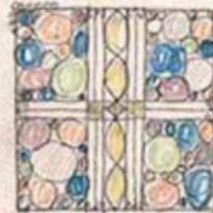
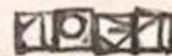




1034.



1019



1031.

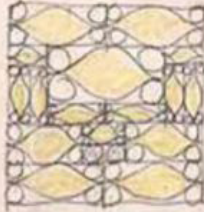


364

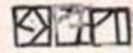
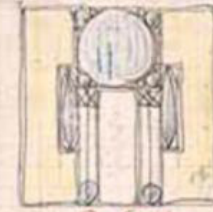
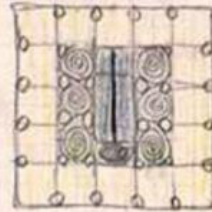
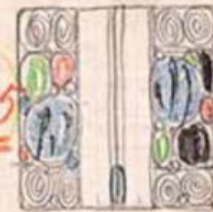


365

ellos



366



367

368

Inspiration

Source: Pinterest, Moravian Gallery









