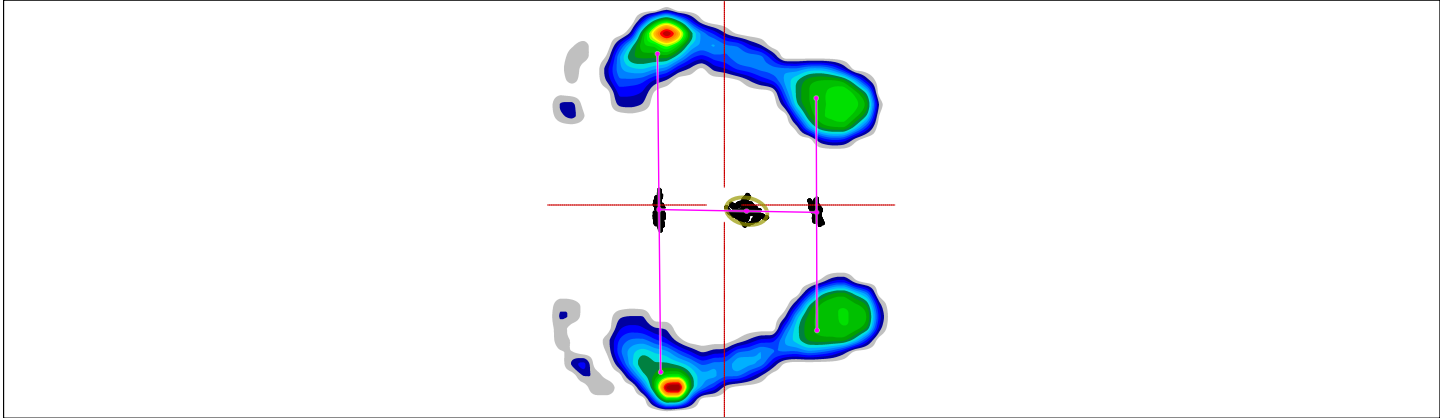


## Stance parameters

Stance, average



### Parameters

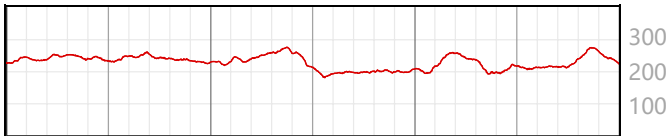
Analysis time, sec	30,0	<div style="width: 75%;"></div>	40 sec
95% confidence ellipse area, mm <sup>2</sup>	453	<div style="width: 90%;"></div>	500 mm <sup>2</sup>
COP path length, mm	252	<div style="width: 84%;"></div>	300 mm
COP average velocity, mm/sec	8	<div style="width: 89%;"></div>	9 mm/sec

### Parameters advanced

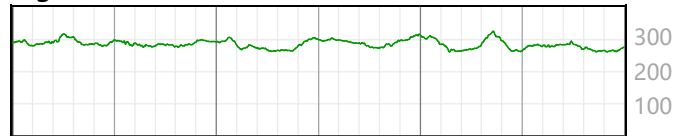
Length of minor axis, mm	19,2	<div style="width: 48%;"></div>	40 mm
Length of major axis, mm	30,1	<div style="width: 75%;"></div>	40 mm
Angle btw. Y and major axis, deg	78,3	<div style="width: 88%;"></div>	90 deg
Deviation X, mm	19,3	<div style="width: 48%;"></div>	40 mm
Deviation Y, mm	-2,4	<div style="width: 6%;"></div>	40 mm

### Force (N)

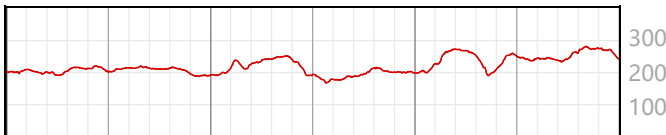
Left forefoot



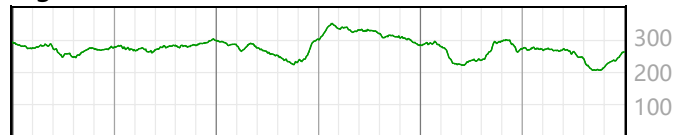
Right forefoot



Left backfoot



Right backfoot



### Average Forces (%)

#### Left

Forefoot	51	<div style="width: 51%;"></div>	100%
Backfoot	49	<div style="width: 49%;"></div>	
Total	44	<div style="width: 44%;"></div>	

#### Right

100%	<div style="width: 51%;"></div>	51	Forefoot
	<div style="width: 49%;"></div>	49	Backfoot
	<div style="width: 56%;"></div>	56	Total