

**seminární skupina**

	Frequency	Percent	Valid Percent	Cumulative Percent
Valid A	24	29,3	29,3	29,3
B	25	30,5	30,5	59,8
CD	12	14,6	14,6	74,4
kombinovaní	21	25,6	25,6	100,0
Total	82	100,0	100,0	

**Četnosti - lateralita****ruka1**

	Frequency	Percent	Valid Percent	Cumulative Percent
Valid levou	5	6,1	6,1	6,1
pravou	77	93,9	93,9	100,0
Total	82	100,0	100,0	

**ruka2**

	Frequency	Percent	Valid Percent	Cumulative Percent
Valid levou	6	7,3	7,3	7,3
pravou	76	92,7	92,7	100,0
Total	82	100,0	100,0	

**noha1**

	Frequency	Percent	Valid Percent	Cumulative Percent
Valid levou	10	12,2	12,2	12,2
pravou	72	87,8	87,8	100,0
Total	82	100,0	100,0	

**noha2**

	Frequency	Percent	Valid Percent	Cumulative Percent
Valid levou	31	37,8	39,2	39,2
pravou	48	58,5	60,8	100,0
Total	79	96,3	100,0	
Missing neodpověděl	3	3,7		
Total	82	100,0		

### ruka3

		Frequency	Percent	Valid Percent	Cumulative Percent
Valid	levou	7	8,5	8,6	8,6
	pravou	74	90,2	91,4	100,0
	Total	81	98,8	100,0	
Missing	neodpověděl	1	1,2		
Total		82	100,0		

### oko1

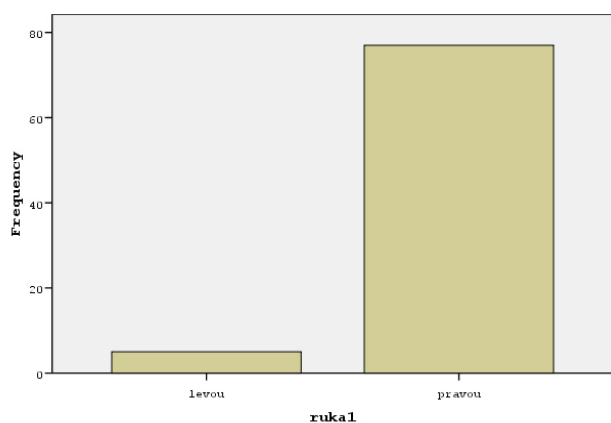
		Frequency	Percent	Valid Percent	Cumulative Percent
Valid	levou	17	20,7	21,0	21,0
	pravou	64	78,0	79,0	100,0
	Total	81	98,8	100,0	
Missing	neodpověděl	1	1,2		
Total		82	100,0		

### Lateralita - součtová škála

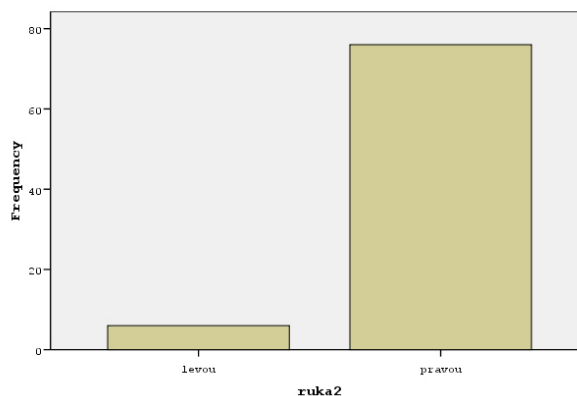
		Frequency	Percent	Valid Percent	Cumulative Percent
Valid	-6	2	2,4	2,6	2,6
	-4	2	2,4	2,6	5,1
	0	3	3,7	3,8	9,0
	2	7	8,5	9,0	17,9
	4	30	36,6	38,5	56,4
	6	34	41,5	43,6	100,0
	Total		78	95,1	100,0
Missing	System	4	4,9		
Total		82	100,0		

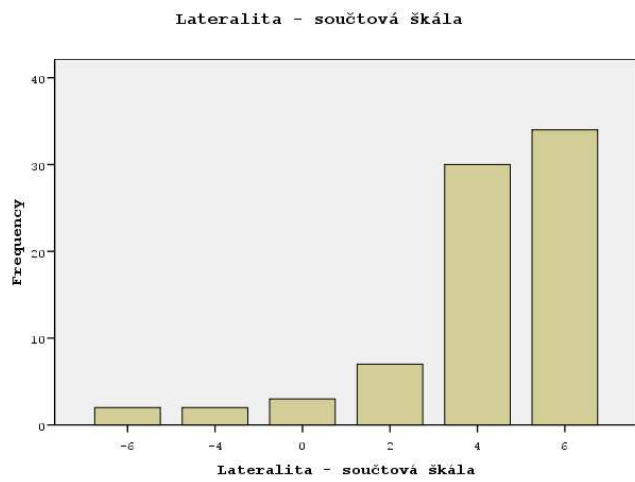
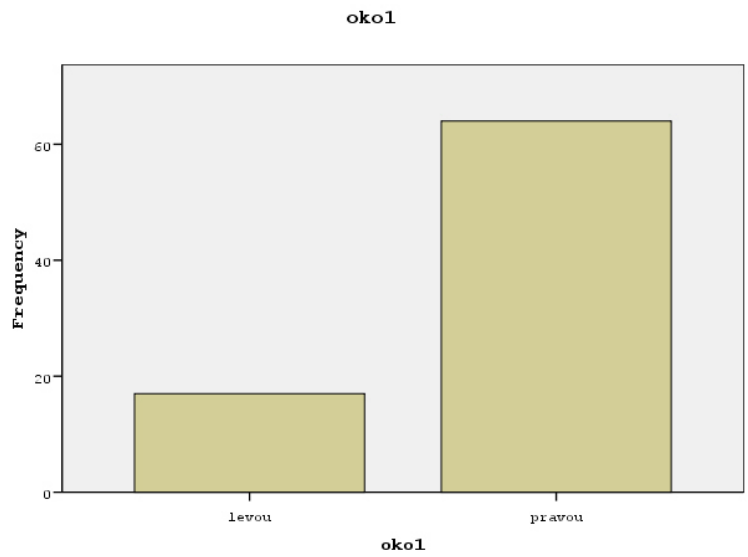
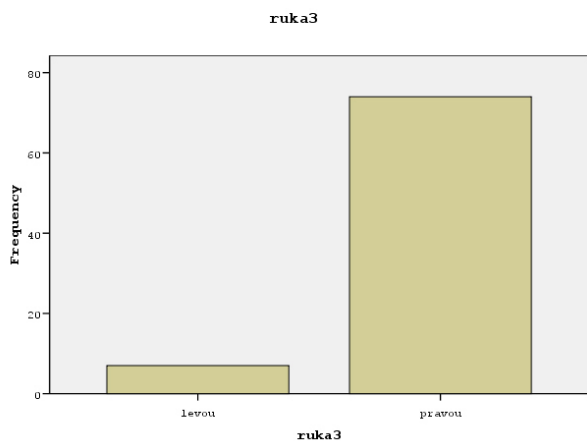
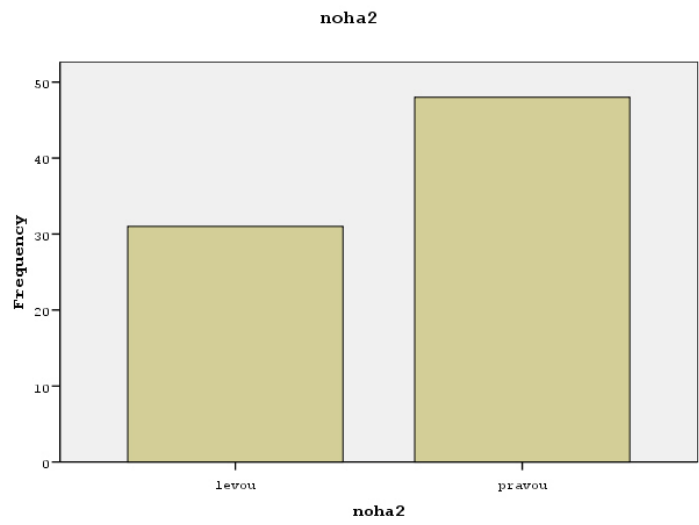
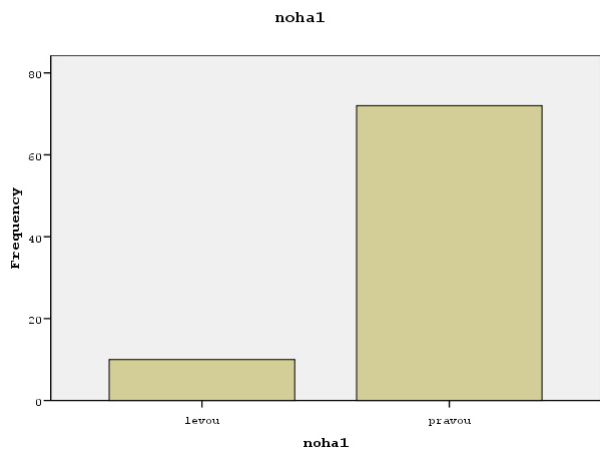
## Bar Chart

ruka1

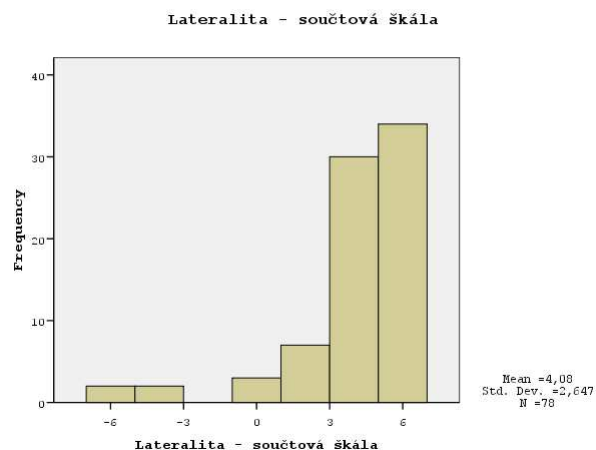
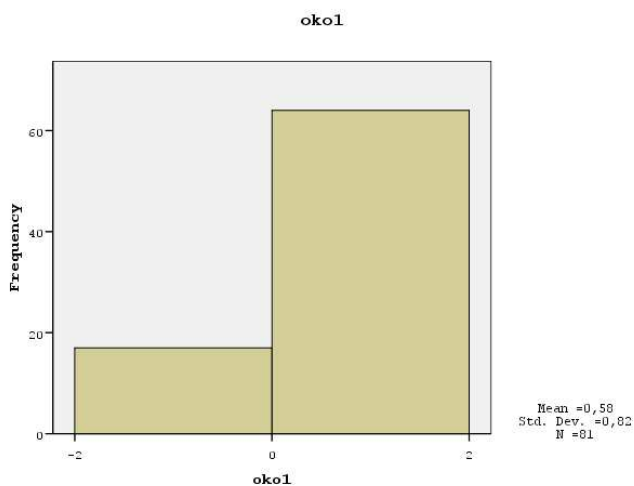


ruka2









## Deskriptivy - lateralita

		ruka1	ruka2	noha1	noha2	ruka3	oko1	Lateralita - součtová škála
N	Valid	82	82	82	79	81	81	78
	Missing	0	0	0	3	1	1	4
Mean		,88	,85	,76	,22	,83	,58	4,08
Std. Error of Mean		,053	,058	,073	,111	,063	,091	,300
Median		,88(a)	,85(a)	,76(a)	,22(a)	,83(a)	,58(a)	4,63(a)
Mode		1	1	1	1	1	1	6
Std. Deviation		,482	,524	,658	,983	,565	,820	2,647
Variance		,232	,275	,434	,966	,320	,672	7,007
Skewness		-3,738	-3,339	-2,354	-,449	-3,000	-1,452	-2,245
Std. Error of Skewness		,266	,266	,266	,271	,267	,267	,272
Kurtosis		12,273	9,380	3,629	-1,846	7,174	,110	5,618
Std. Error of Kurtosis		,526	,526	,526	,535	,529	,529	,538
Range		2	2	2	2	2	2	12
Minimum		-1	-1	-1	-1	-1	-1	-6
Maximum		1	1	1	1	1	1	6
Sum		72	70	62	17	67	47	318
Percentiles	25	-,12(b)	-,15(b)	-,24(b)	-,78(b)	-,17(b)	-,42(b)	2,97(b)
	50	,88	,85	,76	,22	,83	,58	4,63
	75	.	.	.	.	.	.	5,84

a Calculated from grouped data.

b Percentiles are calculated from grouped data.

## Četnosti – další proměnné

### kino

		Frequency	Percent	Valid Percent	Cumulative Percent
Valid	0	44	53,7	53,7	53,7
	1	19	23,2	23,2	76,8
	2	16	19,5	19,5	96,3
	3	2	2,4	2,4	98,8
	8	1	1,2	1,2	100,0
	Total	82	100,0	100,0	

### hudba

		Frequency	Percent	Valid Percent	Cumulative Percent
Valid	0	6	7,3	7,4	7,4
	1	14	17,1	17,3	24,7
	2	34	41,5	42,0	66,7
	3	5	6,1	6,2	72,8
	4	13	15,9	16,0	88,9
	5	1	1,2	1,2	90,1
	6	7	8,5	8,6	98,8
	8	1	1,2	1,2	100,0
	Total	81	98,8	100,0	
Missing	neplatná odpověď	1	1,2		
	Total	82	100,0		

### knimol

		Frequency	Percent	Valid Percent	Cumulative Percent
Valid	a) 3 knihy	38	46,3	46,3	46,3
	b) 5 knih	34	41,5	41,5	87,8
	c) 7 knih	10	12,2	12,2	100,0
	Total	82	100,0	100,0	

### skolne

		Frequency	Percent	Valid Percent	Cumulative Percent
Valid	pro	28	34,1	34,1	34,1
	proti	54	65,9	65,9	100,0
	Total	82	100,0	100,0	

## pid

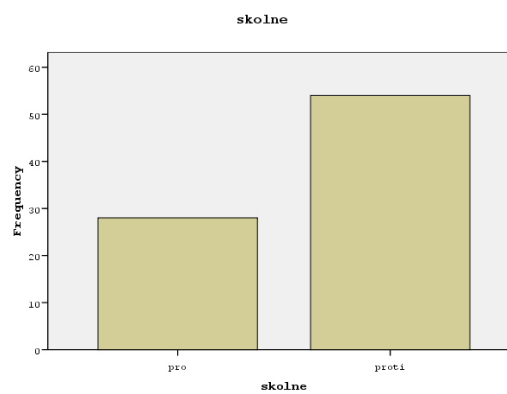
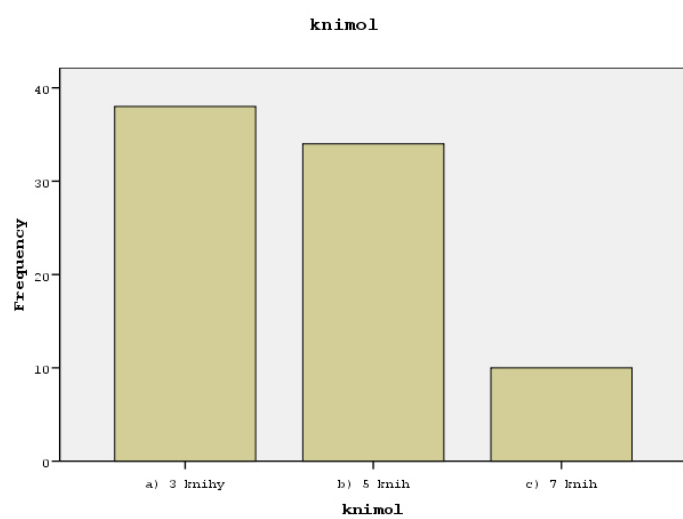
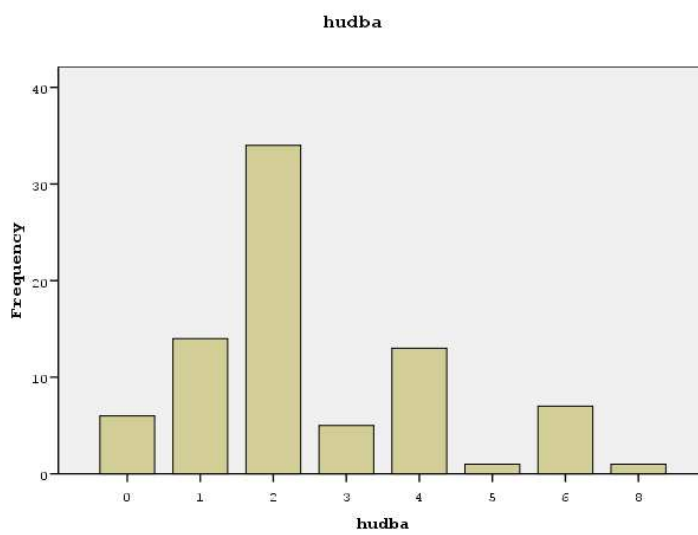
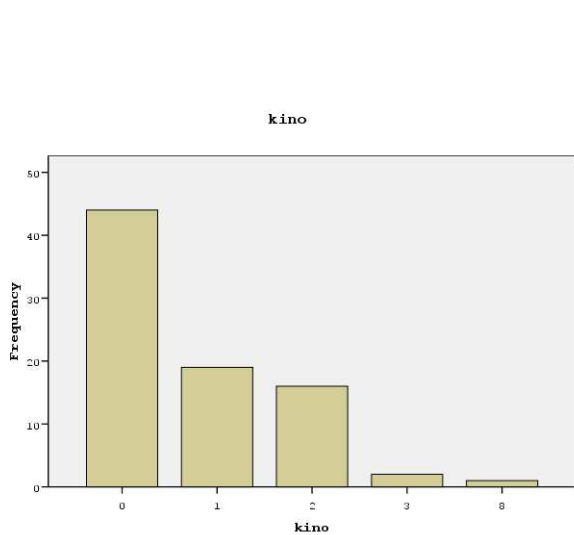
		Frequency	Percent	Valid Percent	Cumulative Percent
Valid	10,00	1	1,2	1,3	1,3
	12,00	1	1,2	1,3	2,5
	15,00	3	3,7	3,8	6,3
	16,00	1	1,2	1,3	7,5
	17,00	4	4,9	5,0	12,5
	17,50	1	1,2	1,3	13,8
	18,00	9	11,0	11,3	25,0
	19,00	11	13,4	13,8	38,8
	20,00	25	30,5	31,3	70,0
	20,50	1	1,2	1,3	71,3
	21,00	12	14,6	15,0	86,3
	21,50	1	1,2	1,3	87,5
	22,00	6	7,3	7,5	95,0
	23,00	2	2,4	2,5	97,5
	24,00	1	1,2	1,3	98,8
	24,50	1	1,2	1,3	100,0
	Total	80	97,6	100,0	
Missing	neplatná odpověď	2	2,4		
Total		82	100,0		

## vyska

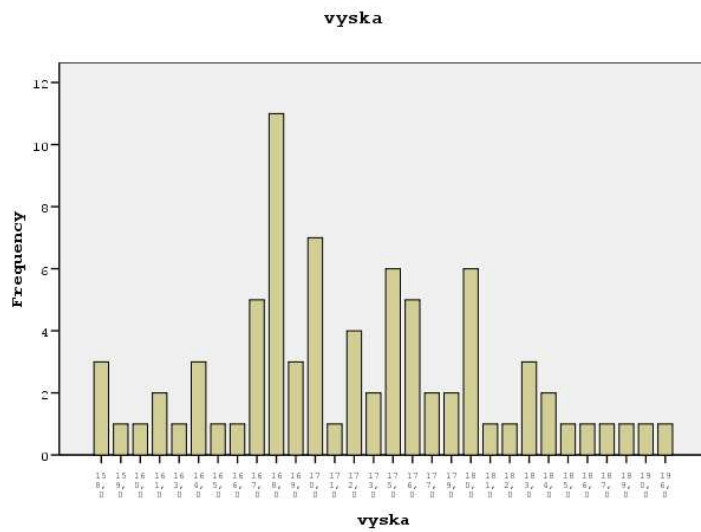
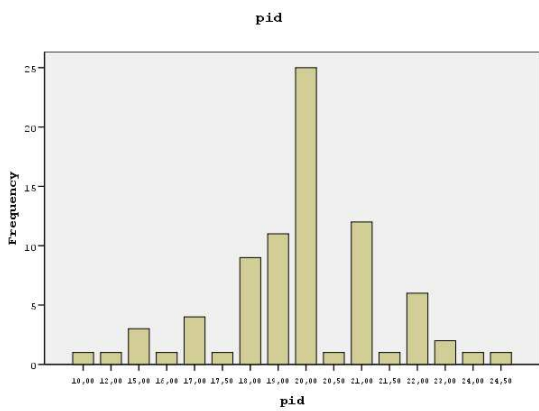
		Frequency	Percent	Valid Percent	Cumulative Percent
Valid	158,0	3	3,7	3,8	3,8
	159,0	1	1,2	1,3	5,0
	160,0	1	1,2	1,3	6,3
	161,0	2	2,4	2,5	8,8
	163,0	1	1,2	1,3	10,0
	164,0	3	3,7	3,8	13,8
	165,0	1	1,2	1,3	15,0
	166,0	1	1,2	1,3	16,3
	167,0	5	6,1	6,3	22,5
	168,0	11	13,4	13,8	36,3
	169,0	3	3,7	3,8	40,0
	170,0	7	8,5	8,8	48,8
	171,0	1	1,2	1,3	50,0
	172,0	4	4,9	5,0	55,0
	173,0	2	2,4	2,5	57,5
	175,0	6	7,3	7,5	65,0
	176,0	5	6,1	6,3	71,3
	177,0	2	2,4	2,5	73,8
	179,0	2	2,4	2,5	76,3
	180,0	6	7,3	7,5	83,8
	181,0	1	1,2	1,3	85,0
	182,0	1	1,2	1,3	86,3
	183,0	3	3,7	3,8	90,0

	184,0	2	2,4	2,5	92,5
	185,0	1	1,2	1,3	93,8
	186,0	1	1,2	1,3	95,0
	187,0	1	1,2	1,3	96,3
	189,0	1	1,2	1,3	97,5
	190,0	1	1,2	1,3	98,8
	196,0	1	1,2	1,3	100,0
	Total	80	97,6	100,0	
Missing	999,0	2	2,4		
Total		82	100,0		

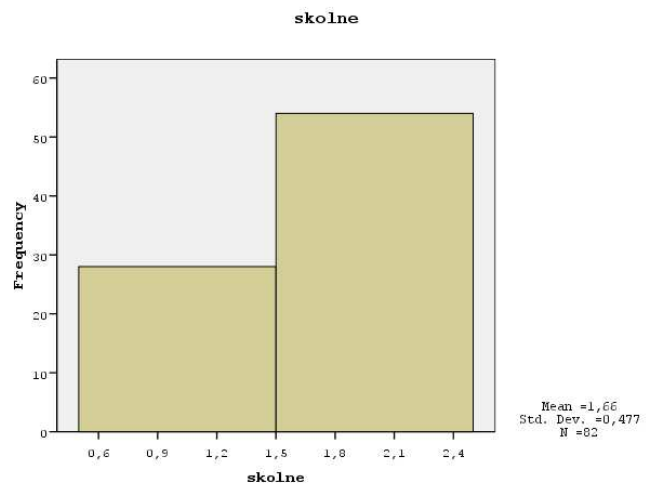
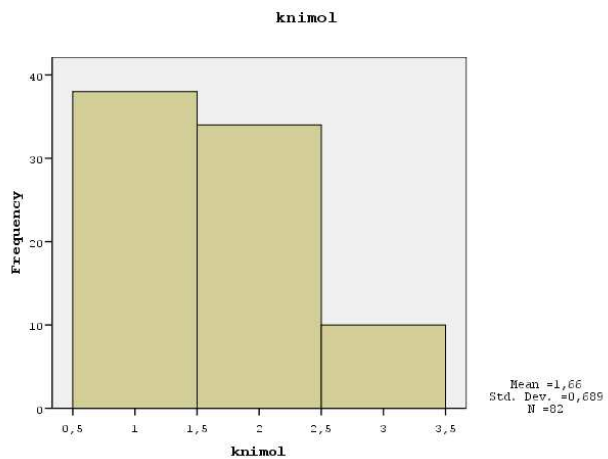
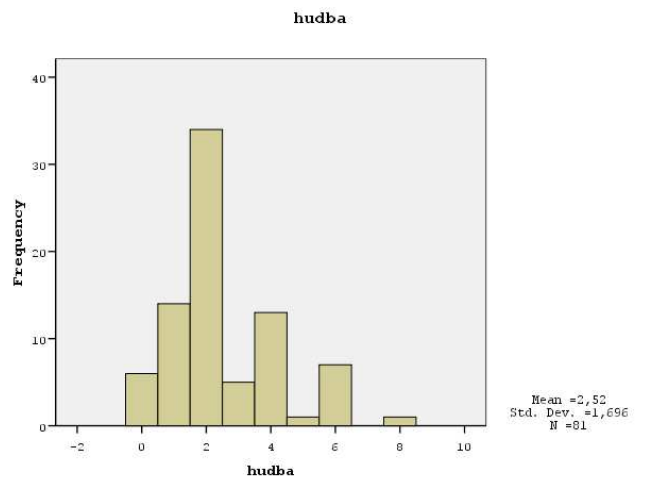
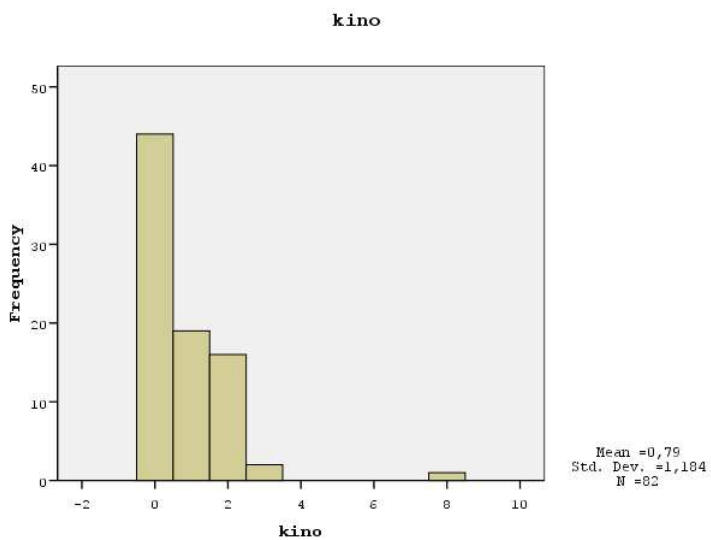
## Bar Chart

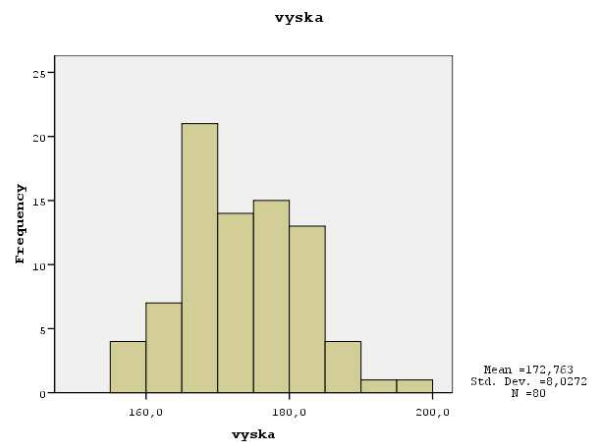
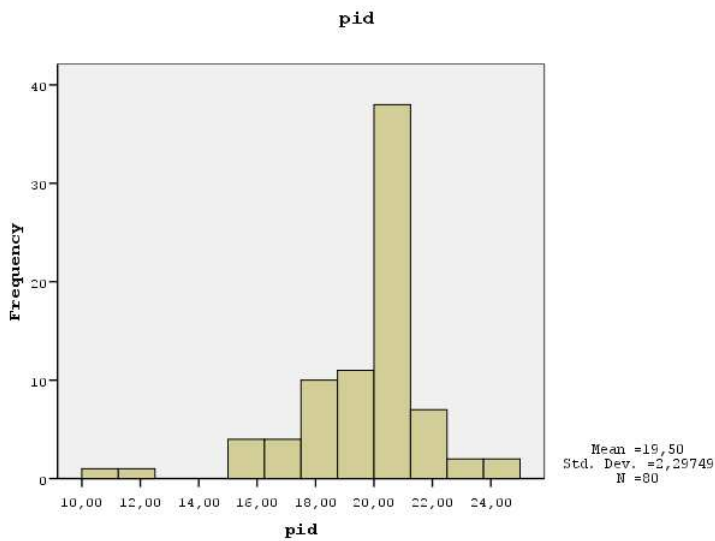






# Histogram





## Deskriptivy – další proměnné

		kino	hudba	knimol	skolne	pid	vyska
N	Valid	82	81	82	82	80	80
	Missing	0	1	0	0	2	2
Mean		,79	2,52	1,66	1,66	19,5000	172,763
Std. Error of Mean		,131	,188	,076	,053	,25687	,8975
Median		,60(a)	2,18(a)	1,61(a)	1,66(a)	19,8056(a)	171,200(a)
Mode		0	2	1	2	20,00	168,0
Std. Deviation		1,184	1,696	,689	,477	2,29749	8,0272
Variance		1,401	2,878	,475	,228	5,278	64,437
Skewness		3,070	,968	,567	-,681	-1,338	,396
Std. Error of Skewness		,266	,267	,266	,266	,269	,269
Kurtosis		15,834	,708	-,753	-1,575	4,018	-,062
Std. Error of Kurtosis		,526	,529	,526	,526	,532	,532
Range		8	8	2	1	14,50	38,0
Minimum		0	0	1	1	10,00	158,0
Maximum		8	8	3	2	24,50	196,0
Sum		65	204	136	136	1560,00	13821,0
Percentiles	25	.(b,c)	1,30(c)	1,04(c)	1,16(c)	18,4500(c)	167,563(c)
	50	,60	2,18	1,61	1,66	19,8056	171,200
	75	1,46	3,47	2,30	.	20,7692	179,000

a Calculated from grouped data.

b The lower bound of the first interval or the upper bound of the last interval is not known. Some percentiles are undefined.

c Percentiles are calculated from grouped data.

## Četnosti - odhady

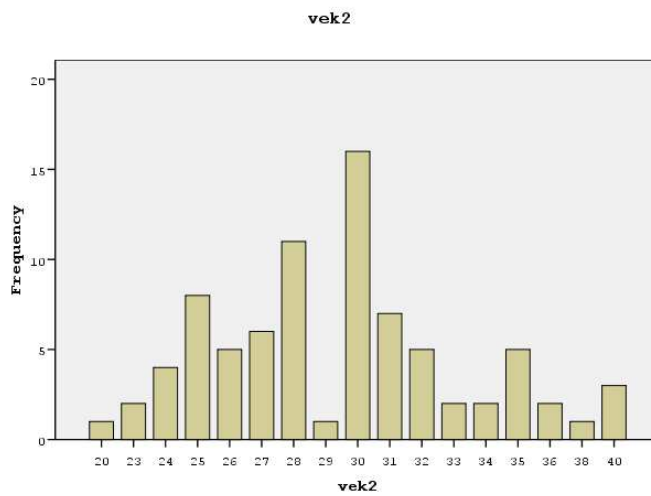
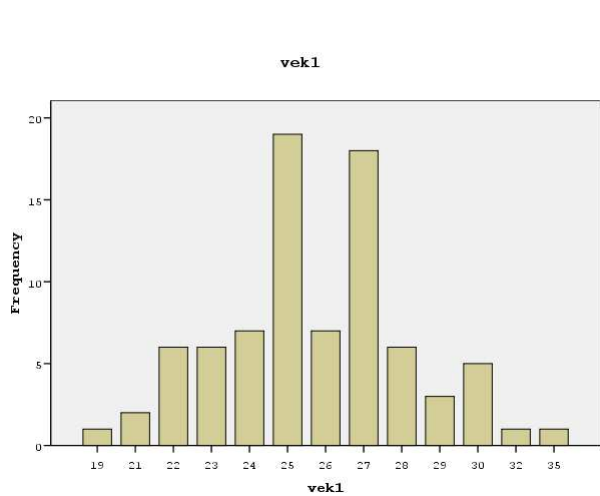
vek1

		Frequency	Percent	Valid Percent	Cumulative Percent
Valid	19	1	1,2	1,2	1,2
	21	2	2,4	2,4	3,7
	22	6	7,3	7,3	11,0
	23	6	7,3	7,3	18,3
	24	7	8,5	8,5	26,8
	25	19	23,2	23,2	50,0
	26	7	8,5	8,5	58,5
	27	18	22,0	22,0	80,5
	28	6	7,3	7,3	87,8
	29	3	3,7	3,7	91,5
	30	5	6,1	6,1	97,6
	32	1	1,2	1,2	98,8
	35	1	1,2	1,2	100,0
	Total	82	100,0	100,0	

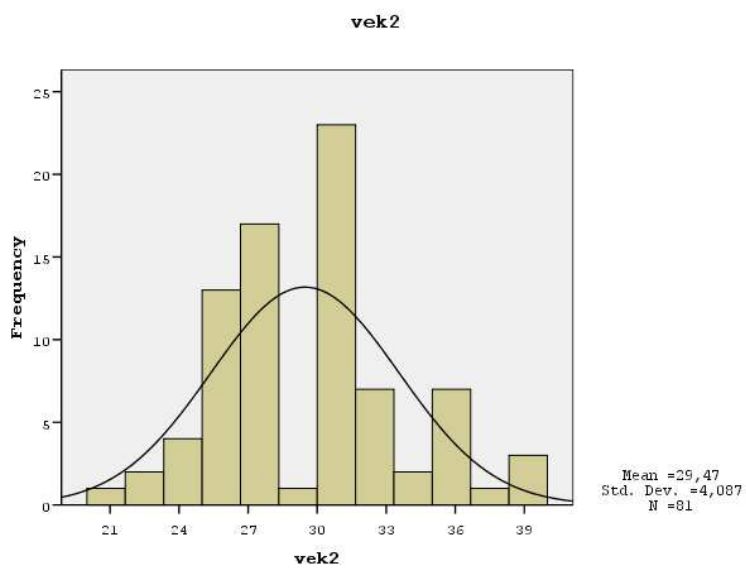
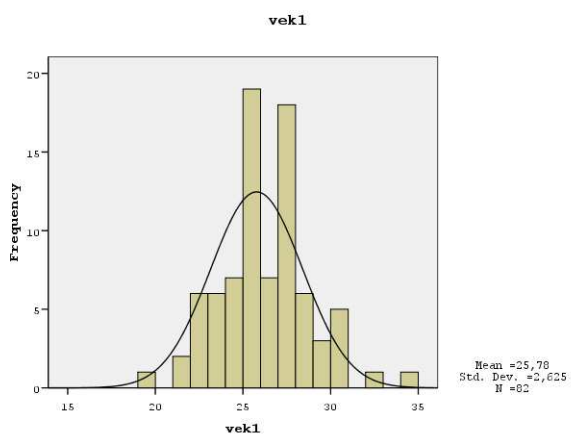
vek2

		Frequency	Percent	Valid Percent	Cumulative Percent
Valid	20	1	1,2	1,2	1,2
	23	2	2,4	2,5	3,7
	24	4	4,9	4,9	8,6
	25	8	9,8	9,9	18,5
	26	5	6,1	6,2	24,7
	27	6	7,3	7,4	32,1
	28	11	13,4	13,6	45,7
	29	1	1,2	1,2	46,9
	30	16	19,5	19,8	66,7
	31	7	8,5	8,6	75,3
	32	5	6,1	6,2	81,5
	33	2	2,4	2,5	84,0
	34	2	2,4	2,5	86,4
	35	5	6,1	6,2	92,6
	36	2	2,4	2,5	95,1
	38	1	1,2	1,2	96,3
	40	3	3,7	3,7	100,0
	Total	81	98,8	100,0	
Missing	neplatná odpověď	1	1,2		
Total		82	100,0		

## Bar Chart



## Histogram



## Deskriptivy - odhady

**Statistics**

		vek1	vek2
N	Valid	82	81
	Missing	0	1
Mean		25,78	29,47
Std. Error of Mean		,290	,454
Median		25,73(a)	29,35(a)
Mode		25	30
Std. Deviation		2,625	4,087
Variance		6,889	16,702
Skewness		,396	,529
Std. Error of Skewness		,266	,267
Kurtosis		1,265	,324
Std. Error of Kurtosis		,526	,529
Range		16	20
Minimum		19	20
Maximum		35	40
Sum		2114	2387
Percentiles	25	24,15(b)	26,50(b)
	50	25,73	29,35
	75	27,38	31,54

a Calculated from grouped data.

b Percentiles are calculated from grouped data.