

EU in International Trade

Emerging Markets, Contemporary
Position

Europe in International Economy

2018

Transformation of world trade patterns by **Emerging Markets**

Export - market share (2005) and its change (1995-2005) (%)

	Market share	Change
EU15	18,4	-1,77
EU25	19,5	-1,33
USA	13,0	-4,41
Canada	4,2	-0,83
Mexico	2,7	0,62
Japan	9,5	-4,12
China	14,1	8,37
Korea	4,3	0,68
India	1,5	0,44
ASEAN	8,7	0,13
Russia	1,4	0,31
Brazil	1,7	0,31

Export by value – share of World exports.

Share of total export on the **main markets** (2005)
and its change (1995–2005)

	USA		Japan		China	
	share	change	share	change	share	change
EU15	20,1	1,17	15,6	-2,32	13,5	-2,02
EU25	20,8	1,53	16,1	-2,06	14,0	-1,82
USA	/	/	16,3	-9,76	9,0	-1,28
Canada	16,2	-2,74	1,9	-1,12	1,2	-1,31
Mexico	10,6	2,29	0,6	0,22	0,3	0,17
Japan	10,1	-8,06	/	/	16,6	-1,41
China	16,1	10,46	28,8	16,70	/	/
Korea	3,2	-0,43	6,0	-0,32	12,0	5,05
India	1,4	0,52	0,6	-0,28	0,8	0,53
ASEAN	7,3	-1,98	14,2	1,04	11,1	4,68
Russia	0,5	-0,08	0,9	-0,72	1,5	-0,85
Brazil	1,6	0,33	0,8	-0,30	1,0	0,06

World export shares by technological level (2005) and its change (1995–2005)

	Total	H-T	M-T	L-T	R-B	P-P
EU25	19,62	17,27	24,03	15,75	22,32	9,57
change	-1,39	-0,57	-1,32	-3,29	-1,49	-0,84
USA	13,03	14,32	14,65	8,08	11,31	16,17
change	-4,35	-7,63	-3,07	-2,29	-3,65	-5,87
Japan	9,50	9,51	15,42	4,75	4,93	0,68
change	-4,08	-9,26	-5,16	-2,01	-0,58	0,13
China	13,96	17,79	8,75	28,16	6,65	5,16
change	8,20	13,94	5,53	11,55	3,40	1,03
India	1,46	0,39	0,83	3,05	2,65	2,84
change	0,43	0,18	0,42	0,68	1,11	0,44
Russia	1,39	0,36	1,28	0,92	4,21	1,13
change	0,36	0,18	0,60	0,35	0,92	-0,35
Brazil	1,69	0,59	1,57	1,11	2,70	7,12
change	0,32	0,36	0,42	-0,08	-0,05	3,69

Export structure by technological level

(2005) and its change (1995- 2005, %)

	H-T	M-T	L-T	R-B	P-P
EU25	23,7	42,3	13,8	16,8	2,6
change	3,4	1,5	-2,1	-1,5	-1,0
USA	29,6	38,8	10,7	12,8	6,7
change	-0,5	4,4	0,2	-1,1	-2,6
Japan	27,0	56,1	8,6	7,7	0,4
change	-0,6	4,8	-0,1	1,1	0,1
Brazil	9,4	32,1	11,3	23,7	22,7
change	5,4	3,6	-4,0	-8,8	4,4
Russia	6,9	31,8	11,3	44,7	4,4
change	2,7	9,4	1,6	-6,9	-6,1
India	7,1	19,5	35,9	26,7	10,5
change	2,3	6,1	-4,6	2,6	-6,6
China	34,3	21,7	34,7	7,0	2,0
change	18,4	2,7	-15,9	-2,1	-3,2
World	26,9	34,5	17,2	14,8	5,4
change	3,1	0,7	-0,3	-1,4	-1,9

World **export shares** by **market segments** (2004)
and its change 1995–2004 (%)

	Low segment		Mid segment		Up-market segment	
	2004	change	2004	change	2004	change
EU25	15,3	-2,27	17,5	-1,95	30,0	<i>0,40</i>
Japan	7,2	-2,55	10,9	<i>-5,74</i>	14,1	<i>-4,45</i>
Korea	4,8	0,20	5,0	1,38	4,4	0,47
India	2,2	0,82	1,4	0,42	0,8	0,36
Russia	1,5	0,45	2,1	0,58	0,8	0,47
USA	12,1	-4,42	12,7	<i>-4,11</i>	14,4	<i>-3,47</i>
Canada	4,2	-1,08	5,0	-0,68	3,1	0,16
Mexico	3,8	-0,37	3,5	1,41	1,6	0,91
China	19,5	<i>10,56</i>	9,1	4,84	4,1	<i>2,42</i>
Brazil	2,0	0,32	2,2	0,21	0,8	0,01
ASEAN	8,7	-1,16	10,3	2,41	8,7	1,43

**Structure
of exports
by market
segments
(2004) and its
change
1995–2004
(%)**

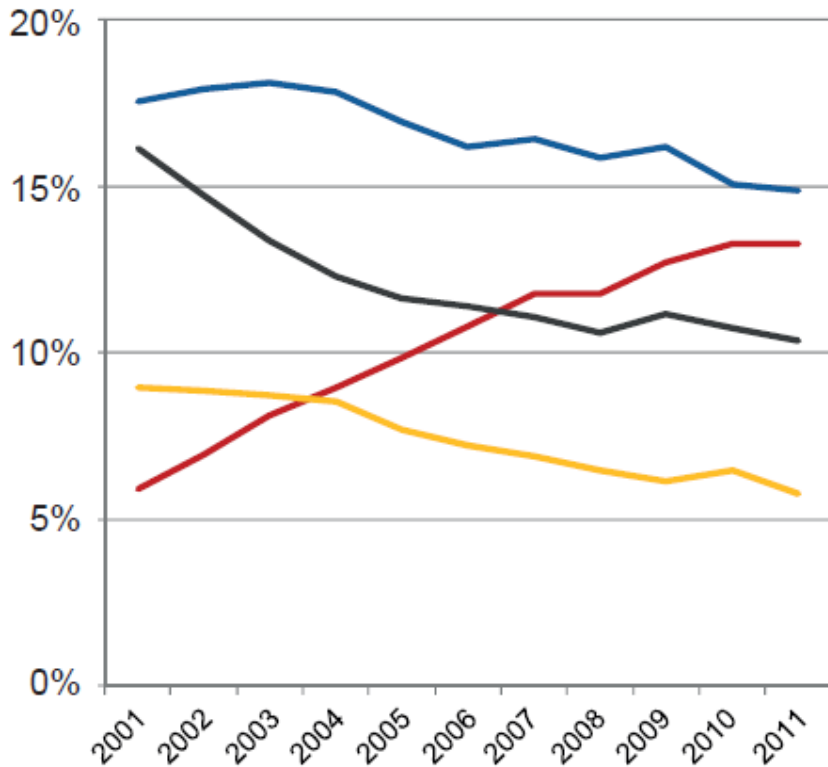
	Low segment	Mid segment	Up-mark. Seg.
EU25	20,6	33,3	46,1
change	-3,4	-1,0	4,4
US	26,61	38,46	34,93
change	-1,52	-1,59	3,12
Japan	19,64	42,66	37,7
change	3,32	-7,11	3,79
Brazil	44,99	36,15	18,86
change	5,23	-2,38	-2,85
Russia	45,12	32,34	22,54
change	-5,96	-1,53	7,49
India	39,18	38,39	22,43
change	-7,8	2,76	5,04
China	54,01	37,09	8,9
change	0,07	-0,96	0,89
World	30,46	38,29	31,25
change	0,49	-0,82	0,33

EU in International Trade

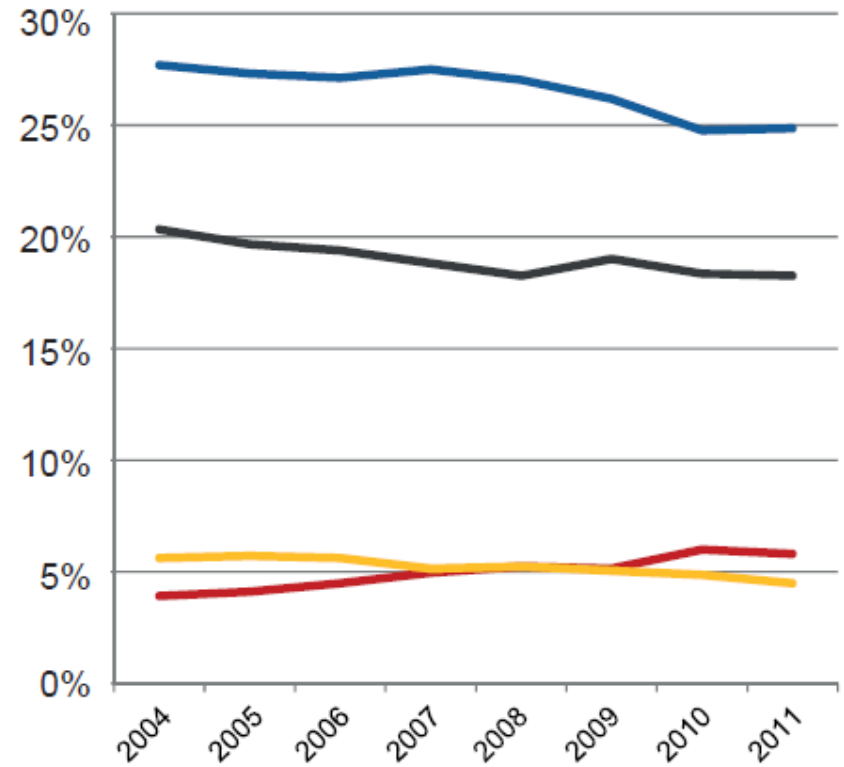
2005-2011

Share in world exports

Merchandise



Services

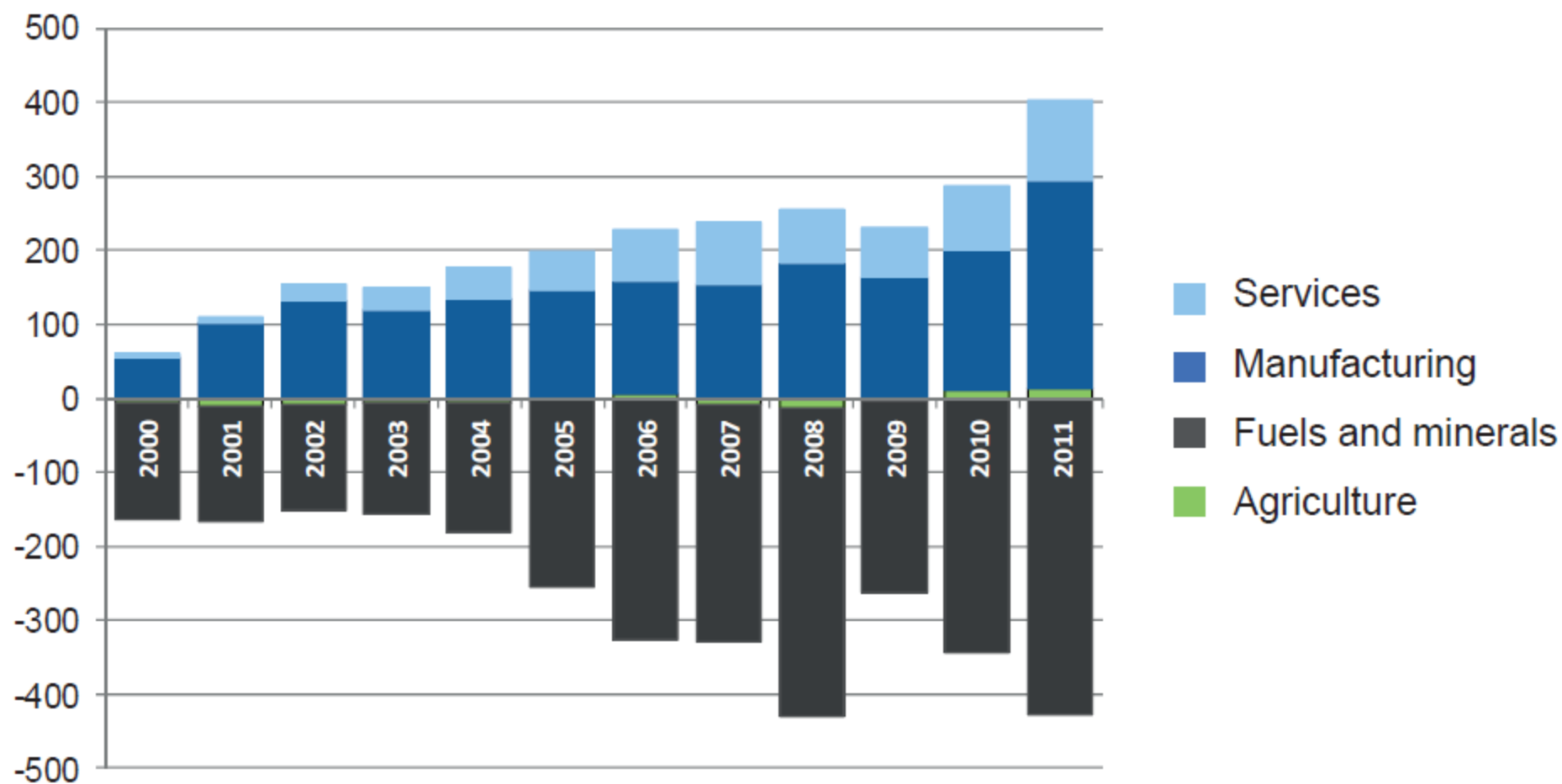


EU **China** **US** **Japan**

Source: WTO

A growing surplus in manufacturing and services

(€ bn)

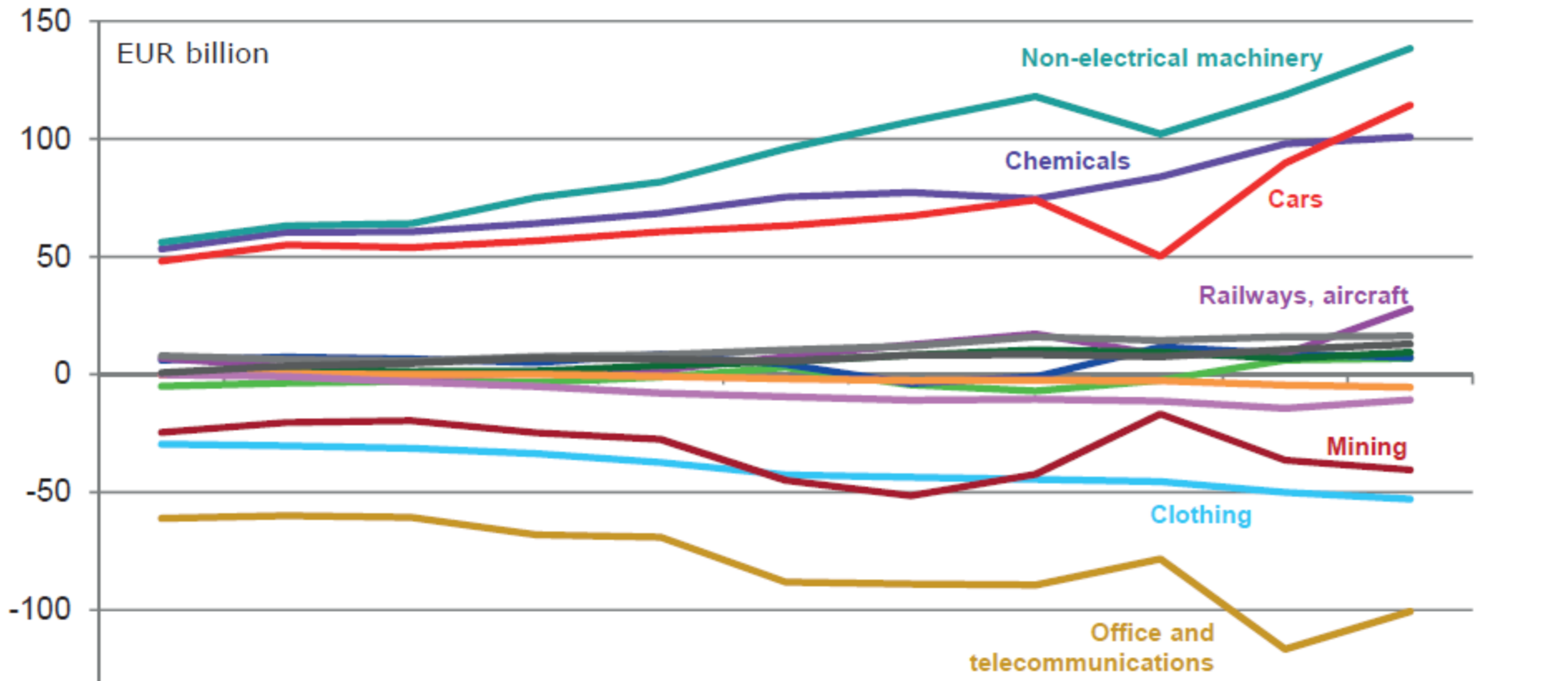


Source: European Commission

Different trends at sectoral level

(trade balance in € bn in selected sectors)

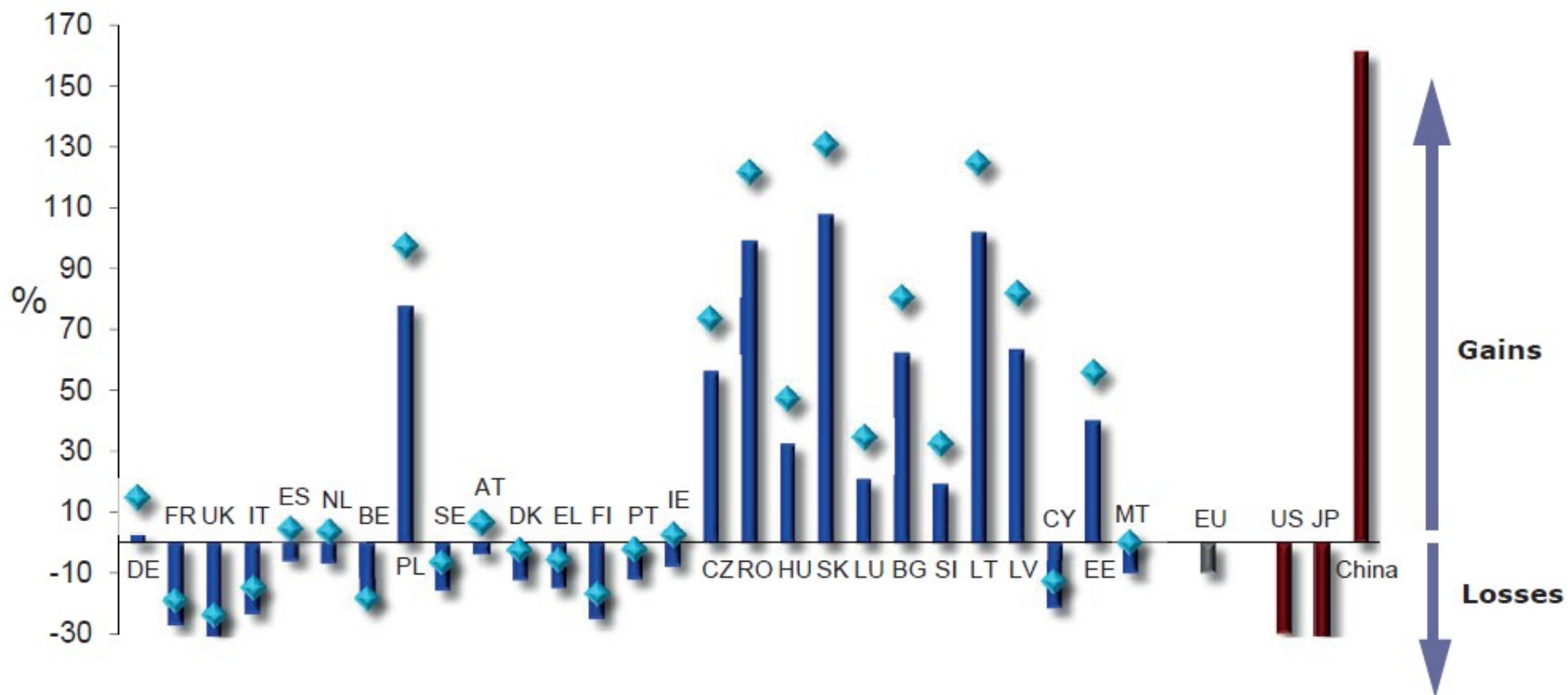
- Agriculture and food products
- Cars
- Textiles
- Mining products
- Railways, aircraft
- Clothing
- Iron and steel
- Power generating machinery
- Scientific instruments
- Chemicals
- Non-electrical machinery
- Personal and household goods
- Office and telecommunication equipments
- Electrical machinery



Export performance of EU Member States 2000-2010

■ Changes in the share of the world export market (in %, 2000-2010)

◆ Changes in the share of the total exports of EU countries (in %, 2000-2010)



Source: European Commission

Figure 5: Index of production, annual average growth rates 2005-2011, EU-27 working day adjusted

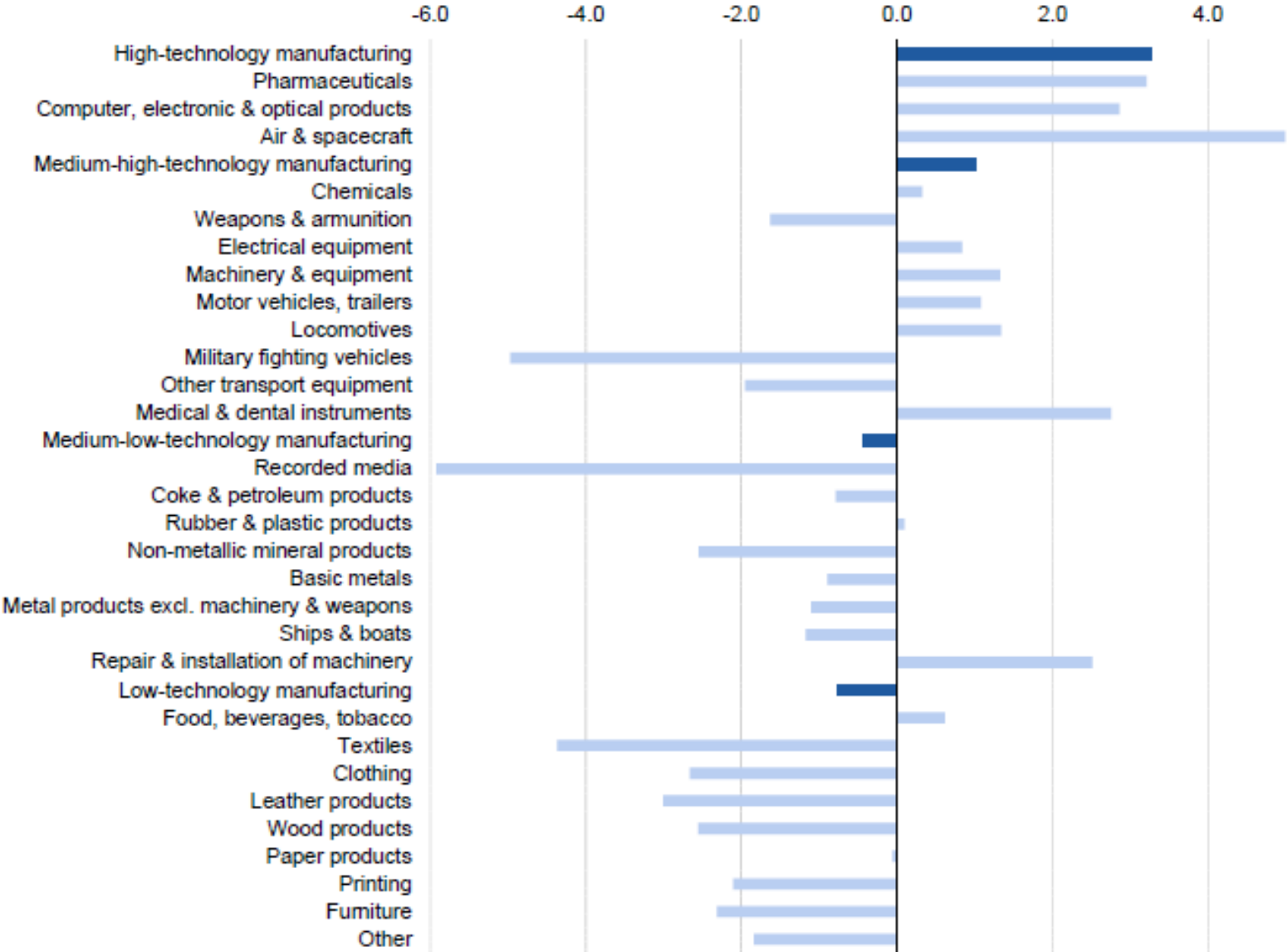
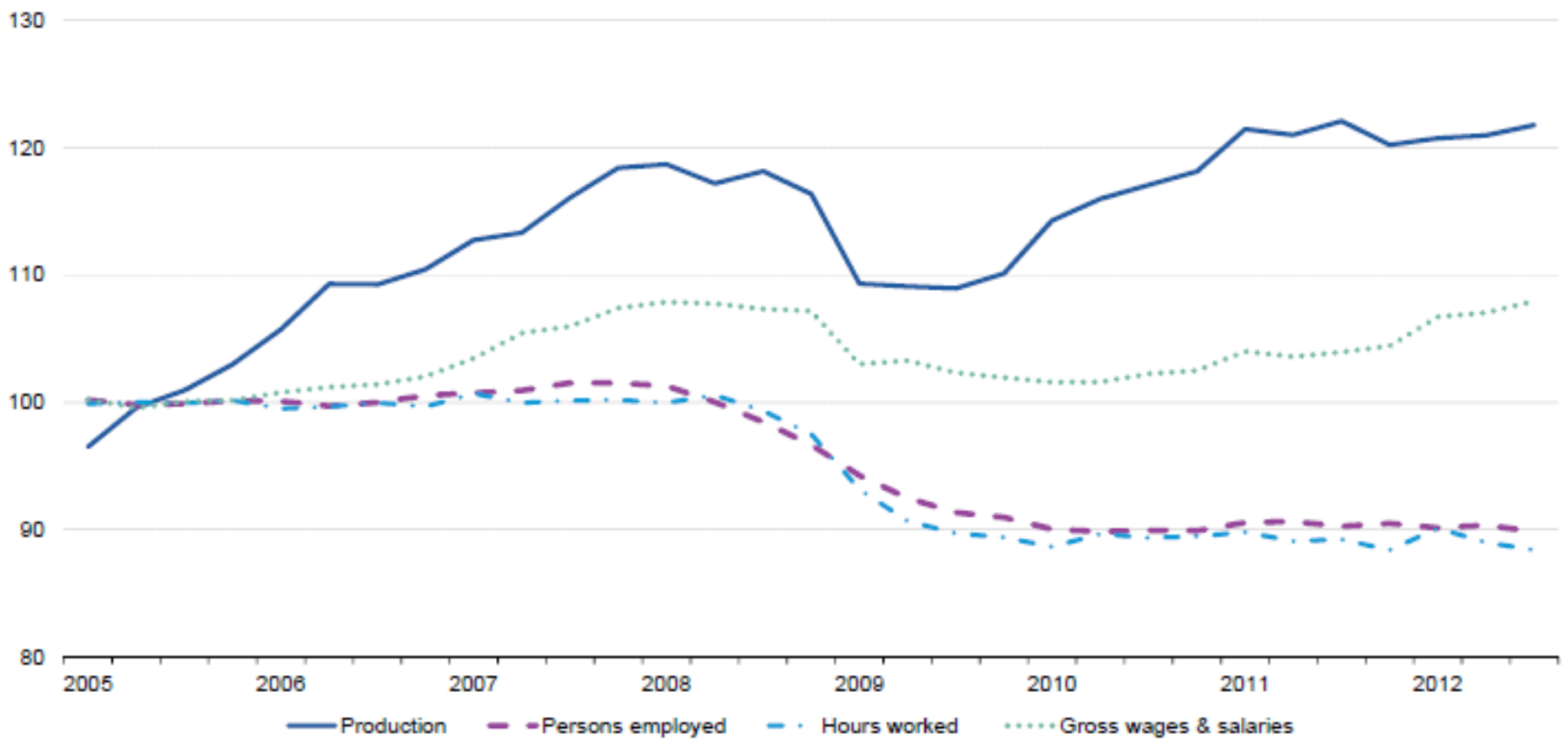


Figure 6: Production and labour input indicators for high-technology manufacturing ⁽¹⁾, EU-27, seasonally adjusted (2005=100)

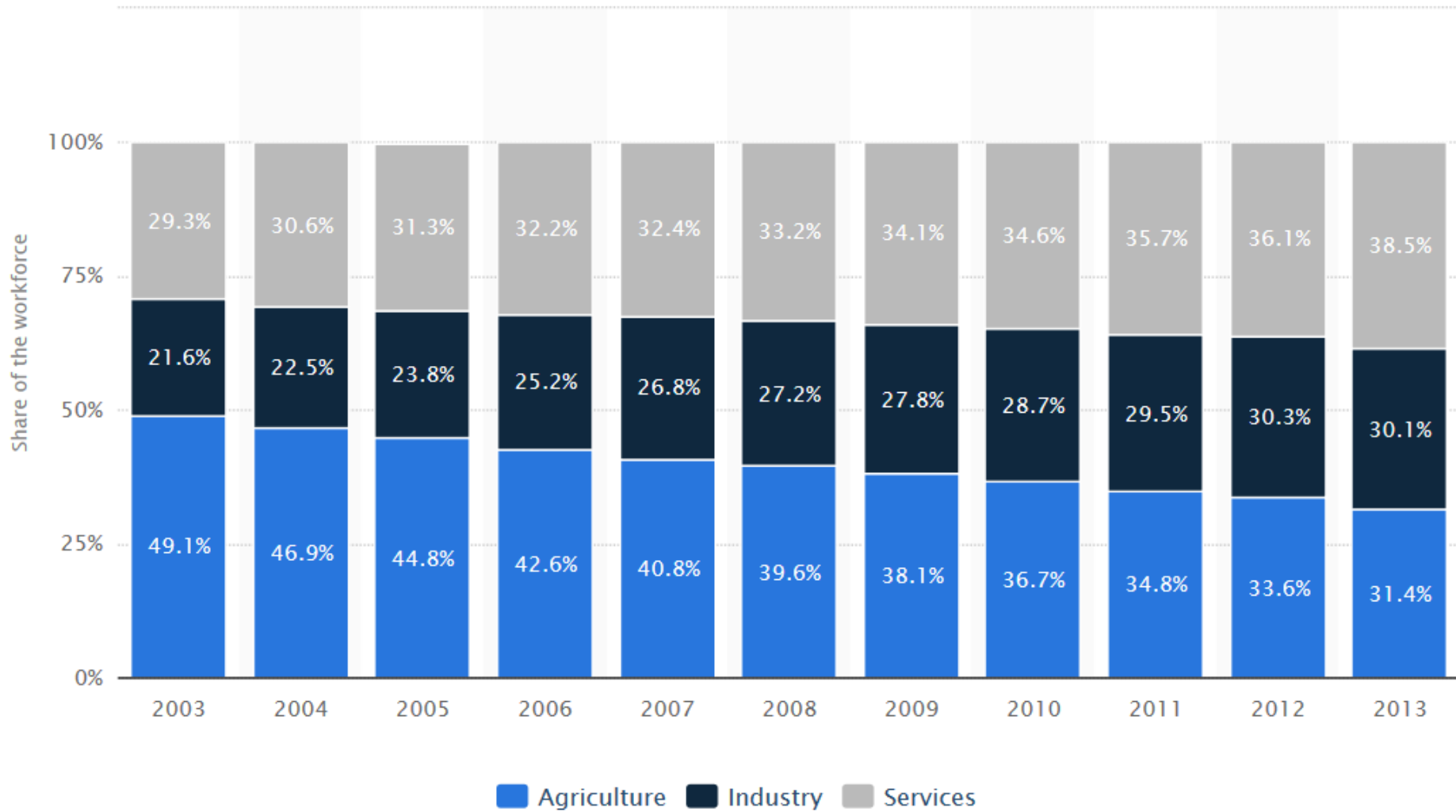


Comparison of World Economic Leaders

	EU28	USA	China
Population	510,1 mil.	324,8 mil.	1 373,5 mil.
Product (PPP)	20,745 trill. USD	18,558 trill. USD	20,853 trill. USD
GDP per capita (PPP)	40 610 USD	57 220 USD	15 095 USD
Exports	2,259 trill. USD	1,471 trill. USD	2,011 trill. USD
Industry value added (% GDP)	24,3%	20,7%	43,1%

Export value – selected countries: Japan 641,4; Korea 509,0;
Mexico 359,3; India 271,6; Russia 259,3; Brazil 189,7.

China – distribution of workforce

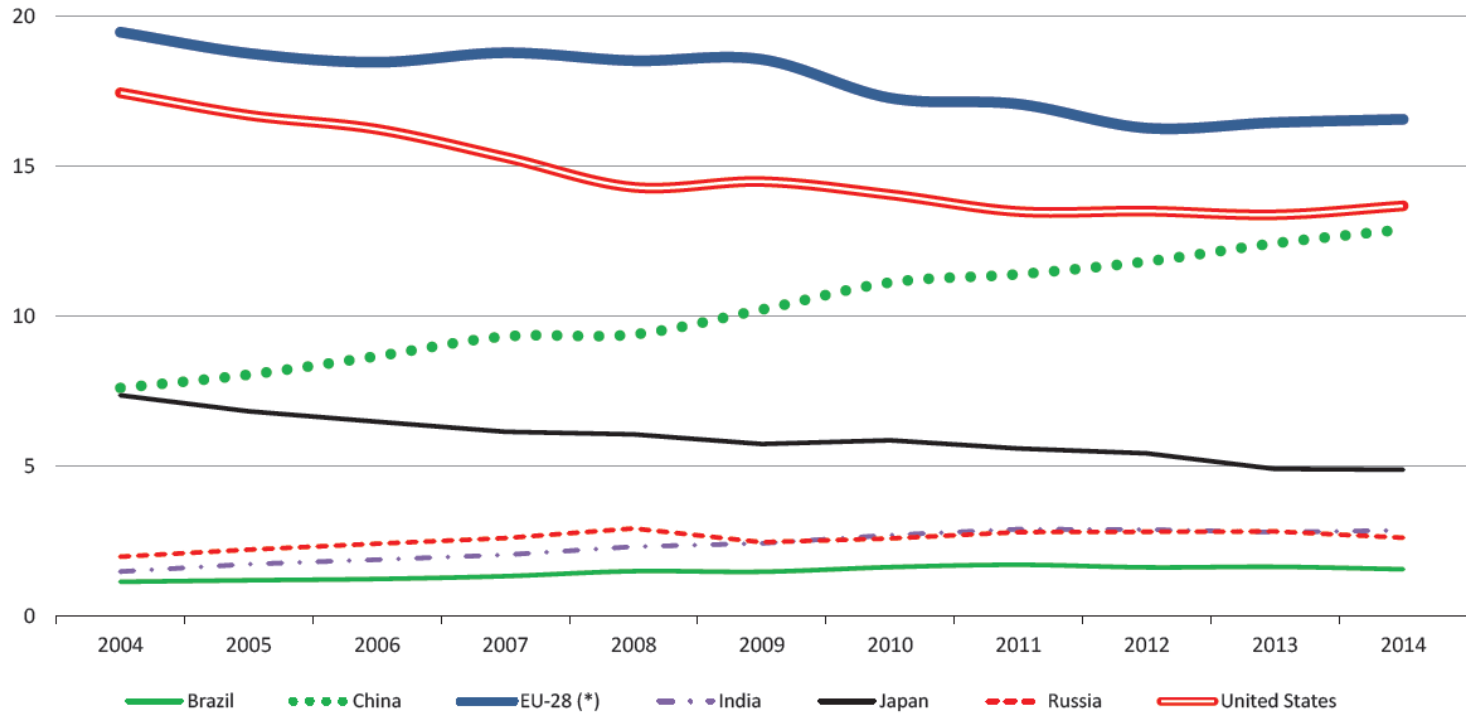


Share in world GDP (PPP, %)

Country	2004	2005	2006	2007	2008	2009	2010	2011	2012	2013	2014
World	100.0	100.0	100.0	100.0	100.0	100.0	100.0	100.0	100.0	100.0	100.0
Argentina	0.8	0.8	0.8	0.8	0.9	0.9	0.9	0.9	0.9	0.9	0.9
Australia	1.1	1.1	1.1	1.1	1.0	1.1	1.0	1.0	1.0	1.0	1.0
Brazil	3.1	3.1	3.0	3.0	3.1	3.1	3.2	3.2	3.1	3.1	3.0
Canada	1.8	1.7	1.7	1.6	1.6	1.6	1.5	1.5	1.5	1.5	1.5
China	9.3	9.9	10.5	11.4	12.1	13.3	14.0	14.7	15.4	16.0	16.6
India	4.7	4.9	5.1	5.3	5.3	5.8	6.1	6.2	6.3	6.6	6.8
Indonesia	2.0	2.0	2.0	2.0	2.1	2.2	2.3	2.3	2.4	2.4	2.5
Japan	6.0	5.8	5.6	5.4	5.2	4.9	4.9	4.7	4.6	4.5	4.4
Mexico	2.2	2.2	2.2	2.1	2.1	2.0	2.0	2.0	2.0	2.0	2.0
Russia	3.4	3.5	3.6	3.7	3.7	3.5	3.4	3.4	3.4	3.4	3.3
Saudi Arabia	1.2	1.3	1.3	1.3	1.4	1.4	1.4	1.5	1.5	1.5	1.5
South Africa	0.7	0.7	0.7	0.7	0.7	0.7	0.7	0.7	0.7	0.7	0.7
South Korea	1.7	1.6	1.6	1.6	1.6	1.6	1.7	1.7	1.6	1.6	1.6
Turkey	1.3	1.4	1.4	1.4	1.4	1.3	1.3	1.4	1.4	1.4	1.4
United States	19.8	19.6	19.1	18.4	17.8	17.4	16.9	16.5	16.4	16.1	15.9
EU-28	22.3	21.8	21.4	20.9	20.5	19.6	19.0	18.6	18.0	17.5	17.1
France	3.2	3.1	3.0	2.9	2.8	2.7	2.6	2.6	2.5	2.5	2.4
Germany	4.4	4.2	4.1	4.0	4.0	3.8	3.7	3.7	3.6	3.5	3.4
Italy	3.0	2.9	2.8	2.7	2.6	2.4	2.3	2.3	2.1	2.0	2.0
United Kingdom	3.0	3.0	2.9	2.8	2.7	2.6	2.5	2.5	2.4	2.4	2.4

EU - World

Share in world trade in goods and services in selected countries (%)



(*) Trade with extra EU-28; services are for EU-27 before 2010.
 Coverage: shares in world trade excluding intra-EU trade.

EU trade (goods)

		2006	2008	2010	2012	2014	2016
World	IMP	1,368	1,585	1,532	1,799	1,693	1,713
	EXP	1,153	1,309	1,354	1,685	1,704	1,744
	BAL	-216	-276	-178	-114	11	32
US	IMP	171	183	175	209	209	251
	EXP	267	248	243	294	312	364
	BAL	96	65	69	84	102	113
China	IMP	196	249	284	292	303	345
	EXP	64	78	114	144	165	170
	BAL	-132	-171	-171	-148	-138	-175

EU trade partners - goods

Imports			Exports			Total trade		
	value	share %		value	share %		value	share %
CH	345	20,1	US	364	20,8	US	614	17,8
US	251	14,6	CH	170	9,7	CH	515	14,9
SWI	122	7,1	SWI	142	8,2	SWI	264	7,6
RUS	119	6,9	TUR	78	4,5	RUS	191	5,5
TUR	67	3,9	RUS	72	4,1	TUR	145	4,2
JAP	67	3,9	JAP	58	3,3	JAP	125	3,6
NOR	63	3,7	NOR	48	2,8	NOR	112	3,2
KOR	42	2,4	UAE	46	2,6	KOR	86	2,5
IND	39	2,3	KOR	44	2,5	IND	77	2,2
VIE	33	1,9	IND	38	2,2	CAN	64	1,9







EU – US trade	Imports		Exports	
	bil EUR	% total	bil EUR	% total
<i>food</i>	11	4,4	20	5,4
<i>steel</i>	1	0,4	5	1,4
chemicals	57	22,6	86	23,6
- pharmaceuticals	32	12,7	48	13,3
mach. and transport eq.	113	44,9	163	44,9
- transport eq.	44	17,7	77	21,2
-- automotive	10	4,1	47	12,8
- power gen. mach.	27	10,7	16	4,4
- non elect. mach.	17	6,8	39	10,8
- elect. mach.	10	4,2	17	4,6
other manufactures	30	11,8	42	11,5

EU – China trade	imports		exports	
	bil EUR	% total	bil EUR	% total
agri.products	7	2,1	15	9,0
fuel and mining	3	0,9	9	5,5
chemicals	16	4,7	22	12,9
other semi. manu.	28	8,2	9	4,8
mach. and trasport eq.	174	50,4	92	54,5
- office and telecom.	103	29,7	8	4,6
-- elect.data processing.	41	12,0	1	0,7
-- telecom. eq.	57	16,5	3	1,6
- transport. Eq	10	2,9	43	25,1
- non elect. mach.	22	6,2	25	14,6
- elect. mach.	35	10,2	13	7,5
clothing	30	8,7	1	0,8
other manufactures	71	20,7	15	8,5

EU – JAP trade	Imports		Exports	
	bil EUR	% total	bil EUR	% total
<i>food</i>	11	4,4	20	5,4
<i>steel</i>	1	0,4	5	1,4
chemicals	57	22,6	86	23,6
- pharmaceuticals	32	12,7	48	13,3
mach. and transport eq.	113	44,9	163	44,9
- transport eq.	44	17,7	77	21,2
-- automotive	10	4,1	47	12,8
- power gen. mach.	27	10,7	16	4,4
- non elect. mach.	17	6,8	39	10,8
- elect. mach.	10	4,2	17	4,6
other manufactures	30	11,8	42	11,5

EU – RUS trade	Imports		Exports	
	bil EUR	% total	bil EUR	% total
food	2	1,6	5	6,6
fuels and mining	86	72,0	1	1,5
chemicals	5	3,7	16	21,7
mach. and trasport eq.	2	2,0	31	43,1
- transport eq.	1	0,9	10	14,2
- non elect. mach.	0,3	0,3	12	16,5
- elect. mach.	0,3	0,3	4	5,4
clothing	0,02	0,0	2,3	3,1

EU-28 trade of services with extra EU-28 by type (billion EUR, %)

EBOPS (*)	Exports				Imports				Trade balance
	Value 2014	Share in total 2014	Variation 2014-13	CAGR 2014-10	Value 2014	Share in total 2014	Variation 2014-13	CAGR 2014-10	2014
TOTAL	764.9	100%	6.3%	7.7%	602.0	100%	10.6%	6.9%	162.9
Manufacturing services on physical inputs owned by others	20.6	2.7%	- 0.6%	2.1%	6.4	1.1%	- 11.9%	9.2%	14.2
Maintenance and repair services n.i.e.	10.1	1.3%	10.1%	21.9%	7.8	1.3%	- 1.7%	33.8%	2.2
Transport 	141.5	18.5%	- 0.1%	3.4%	122.8	20.4%	1.7%	3.2%	18.7
Travel 	108.6	14.2%	4.3%	7.6%	98.0	16.3%	6.7%	3.4%	10.6
Construction	13.4	1.7%	3.2%	9.3%	5.0	0.8%	- 10.3%	- 0.5%	8.4
Insurance and pension services	33.5	4.4%	13.2%	7.3%	13.1	2.2%	20.7%	1.9%	20.4
Financial services 	78.2	10.2%	2.2%	7.0%	38.1	6.3%	1.3%	9.8%	40.1
Charges for the use of intellectual property n.i.e. 	49.4	6.5%	26.6%	14.3%	68.4	11.4%	50.8%	14.4%	- 19.0
Telecommunications, computer, and information services 	94.4	12.3%	10.5%	10.3%	55.6	9.2%	15.3%	8.6%	38.8
Other business services 	199.9	26.1%	9.6%	9.3%	168.6	28.0%	11.1%	8.4%	31.3
Personal, cultural and recreational services	8.0	1.1%	2.8%	7.3%	11.7	1.9%	19.7%	9.3%	- 3.6
Government goods and services n.i.e.	7.1	0.9%	- 17.0%	- 0.8%	6.4	1.1%	- 7.9%	- 1.5%	0.8
Other(**)	0.2	0.0%	- 88.9%	- 16.2%	0.2	0.0%	- 29.9%	- 23.3%	- 0.0
Commercial services	757.8	99.1%	6.6%	7.8%	577.9	96.0%	10.0%	6.4%	179.9

EU-28 trade in services by leading trade partners, 2014 (billion EUR, %)

Rank	Leading clients	Exports	Share in exports	Cumulative share
	All countries	764.9	100%	100%
1	United States	197.0	25.8%	25.8%
2	Switzerland	109.7	14.3%	40.1%
3	China (except Hong Kong)	29.1	3.8%	43.9%
4	Russia	29.0	3.8%	47.7%
5	Norway	27.7	3.6%	51.3%
6	Japan	25.7	3.4%	54.7%
7	Singapore	20.4	2.7%	57.3%
8	Australia	18.6	2.4%	59.8%
9	Canada	16.5	2.2%	61.9%
10	Brazil	15.0	2.0%	63.9%
11	India	12.3	1.6%	65.5%
12	United Arab Emirates	12.3	1.6%	67.1%
13	South Korea	11.9	1.6%	68.7%
14	Turkey	11.0	1.4%	70.1%
15	Hong Kong	10.7	1.4%	71.5%
16	Jersey	10.5	1.4%	72.9%
17	Saudi Arabia	9.3	1.2%	74.1%
18	Mexico	7.9	1.0%	75.1%
19	South Africa	7.4	1.0%	76.1%
20	Israel	6.2	0.8%	76.9%
	<i>Offshore financial centers (*)</i>	74.4	9.7%	

Rank	Leading suppliers	Imports	Share in imports	Cumulative share
	All countries	602.0	100%	100%
1	United States	190.4	31.6%	31.6%
2	Switzerland	63.9	10.6%	42.2%
3	China (except Hong Kong)	22.9	3.8%	46.0%
4	Bermuda (UK)	21.7	3.6%	49.6%
5	Singapore	15.7	2.6%	52.3%
6	Turkey	15.7	2.6%	54.9%
7	Norway	15.5	2.6%	57.5%
8	Japan	15.2	2.5%	60.0%
9	Russia	12.5	2.1%	62.0%
10	India	12.1	2.0%	64.0%
11	Canada	11.4	1.9%	65.9%
12	Hong Kong	10.8	1.8%	67.7%
13	Bahamas	10.5	1.8%	69.5%
14	United Arab Emirates	9.6	1.6%	71.1%
15	Australia	7.8	1.3%	72.4%
16	Brazil	7.5	1.3%	73.6%
17	Jersey	6.9	1.2%	74.8%
18	South Korea	6.0	1.0%	75.8%
19	Thailand	5.8	1.0%	76.7%
20	Morocco	5.1	0.8%	77.6%
	<i>Offshore financial centers (*)</i>	87.8	14.6%	

EU-28 (*) trade balance in goods and services by partner (billion EUR)

Country	2004	2005	2006	2007	2008	2009	2010 ^b	2011	2012	2013	2014
Extra EU-28	- 36.9	- 81.2	- 144.8	- 128.8	- 204.8	- 58.6	- 68.4	- 36.6	52.1	227.7	176.1
Argentina	- 2.5	- 2.3	- 2.4	- 2.2	- 4.1	- 2.8	- 0.7	- 1.0	0.2	3.8	2.6
Australia	13.1	13.6	12.0	14.8	18.9	19.0	21.7	24.5	29.6	32.8	31.2
Brazil	- 7.4	- 7.4	- 8.7	- 9.7	- 5.9	- 1.0	6.6	6.6	11.2	15.3	13.6
Canada	7.0	7.1	7.4	3.4	2.8	6.8	6.8	4.5	6.9	10.4	9.3
China	- 79.1	- 106.6	- 130.1	- 159.4	- 165.7	- 128.0	- 168.2	- 154.6	- 142.3	- 125.4	- 131.3
India	0.4	2.4	3.2	4.0	2.5	3.8	0.5	- 2.0	- 0.2	- 2.1	- 1.4
Indonesia	- 5.6	- 6.0	- 7.0	- 6.5	- 6.9	- 5.5	- 6.2	- 7.5	- 4.3	- 2.8	- 2.7
Japan	- 23.8	- 23.4	- 28.0	- 29.5	- 30.7	- 17.2	- 18.3	- 16.8	- 0.6	6.9	7.2
Mexico	8.9	8.5	10.3	10.2	9.2	7.6	10.3	10.5	12.5	13.9	14.5
Russia	- 37.6	- 54.7	- 67.1	- 51.5	- 67.9	- 46.6	- 65.8	- 79.9	- 76.2	- 70.7	- 62.7
Saudi Arabia	:	:	- 1.6	7.8	3.3	13.2	11.3	2.1	0.5	10.1	12.9
South Africa	0.6	1.7	1.0	0.3	- 2.2	- 1.5	3.1	7.5	8.2	11.7	7.7
South Korea	- 10.6	- 12.2	- 15.4	- 13.8	- 11.2	- 8.1	- 8.9	- 0.5	3.9	9.0	10.4
Turkey	1.3	1.5	3.1	0.2	2.3	3.2	12.8	18.6	21.6	22.3	15.5
United States	85.2	96.9	105.0	91.4	65.3	46.4	67.2	79.2	100.8	110.2	111.1