

# **EU in International Trade**

## Contemporary Position

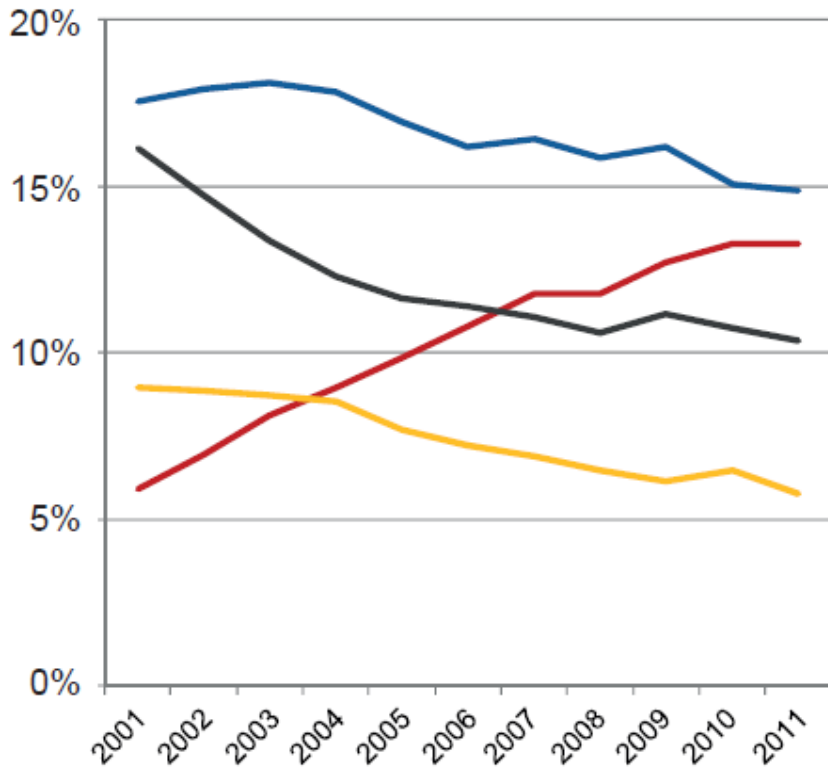
2019

# **EU in International Trade**

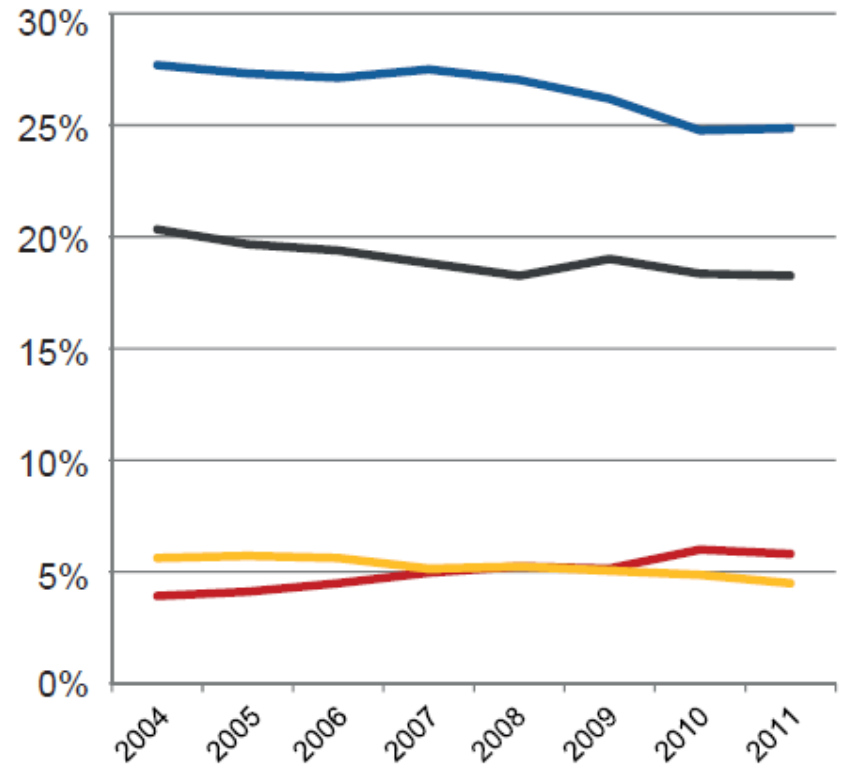
## **2005-2011**

# Share in world exports

## Merchandise



## Services

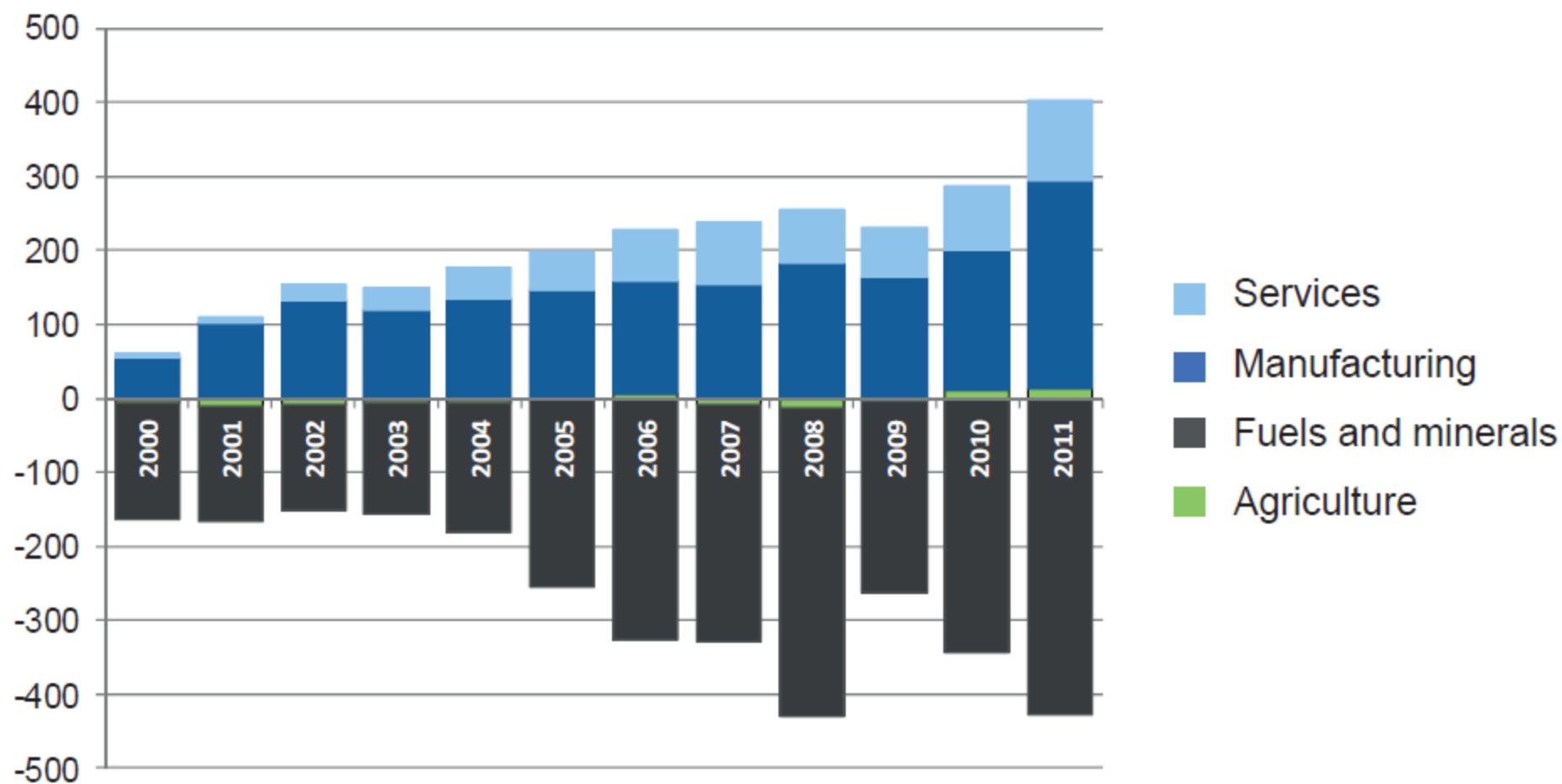


— EU — China — US — Japan

Source: WTO

# A growing surplus in manufacturing and services

(€ bn)

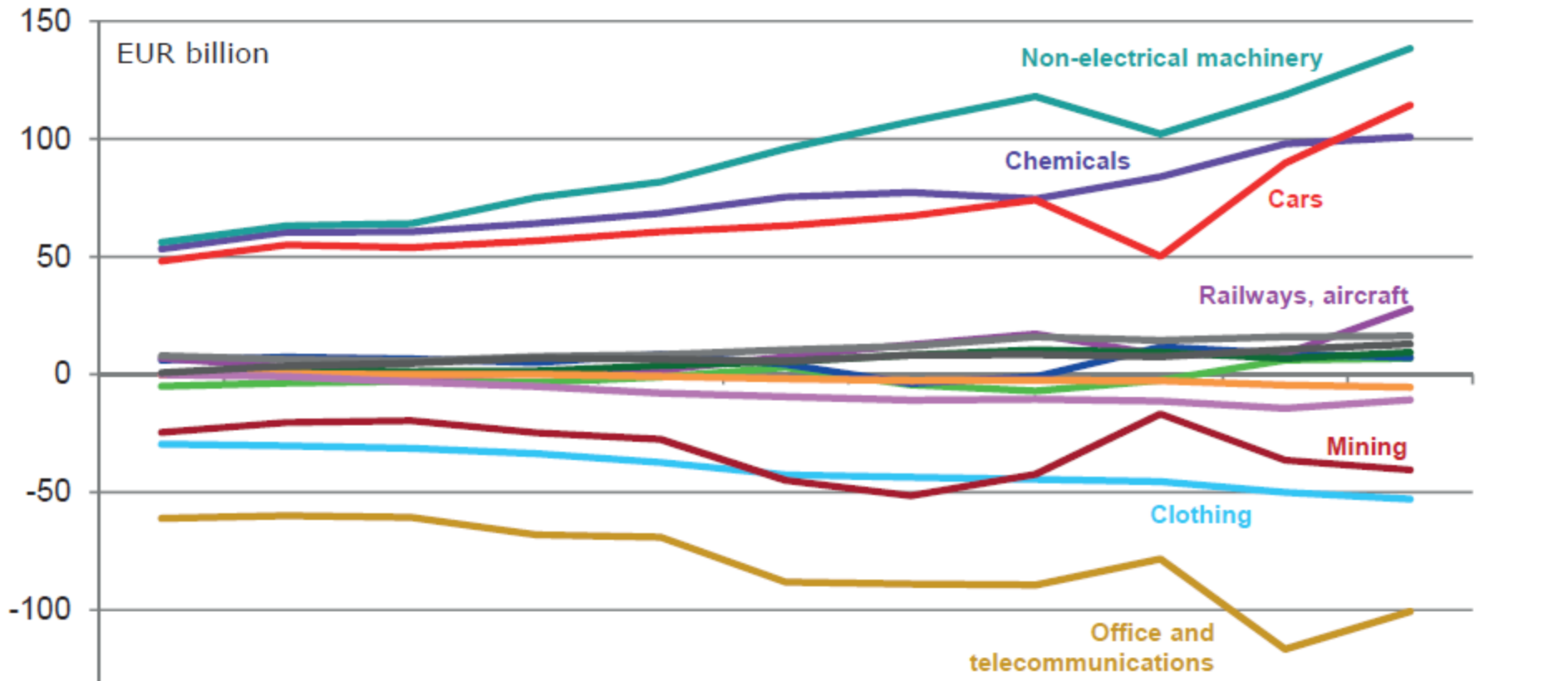


Source: European Commission

# Different trends at sectoral level

(trade balance in € bn in selected sectors)

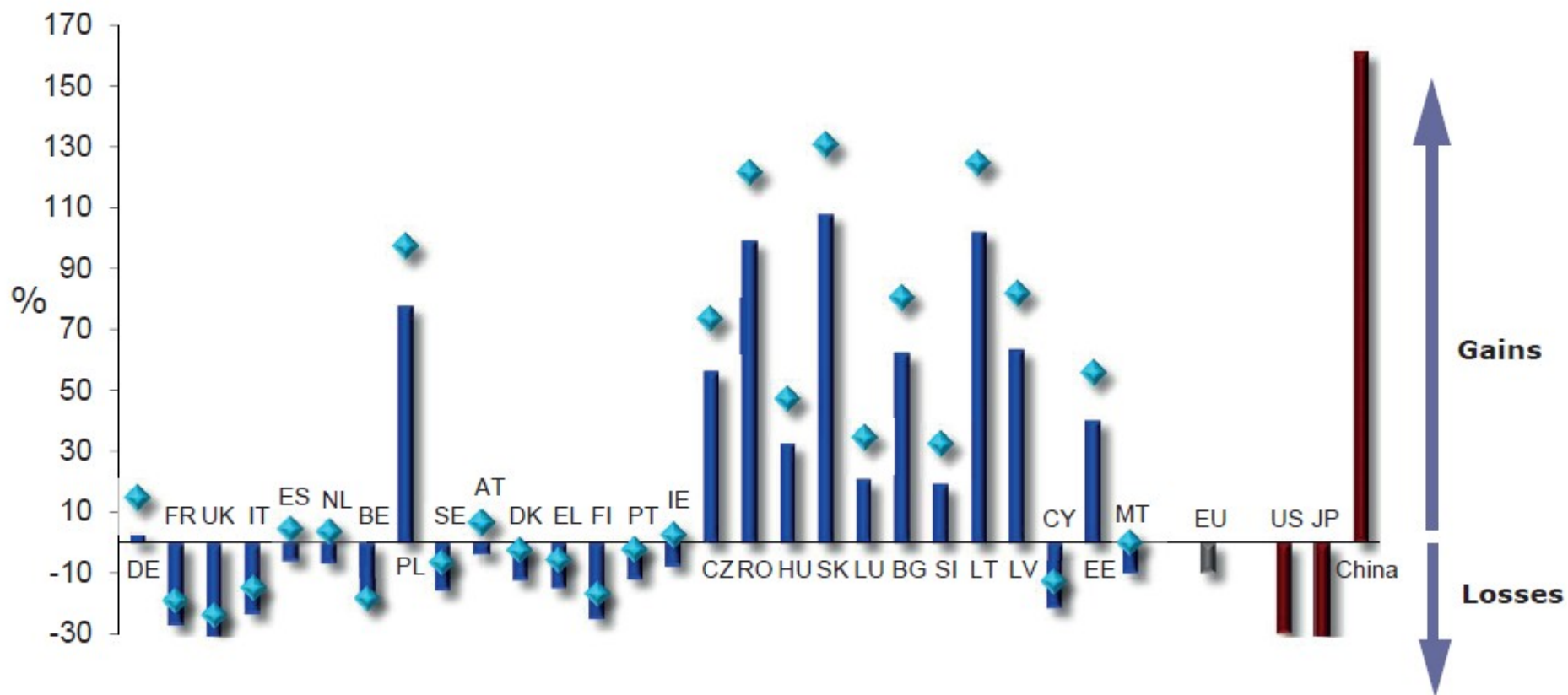
- Agriculture and food products
- Cars
- Textiles
- Mining products
- Railways, aircraft
- Clothing
- Iron and steel
- Power generating machinery
- Scientific instruments
- Chemicals
- Non-electrical machinery
- Personal and household goods
- Office and telecommunication equipments
- Electrical machinery



# Export performance of EU Member States 2000-2010

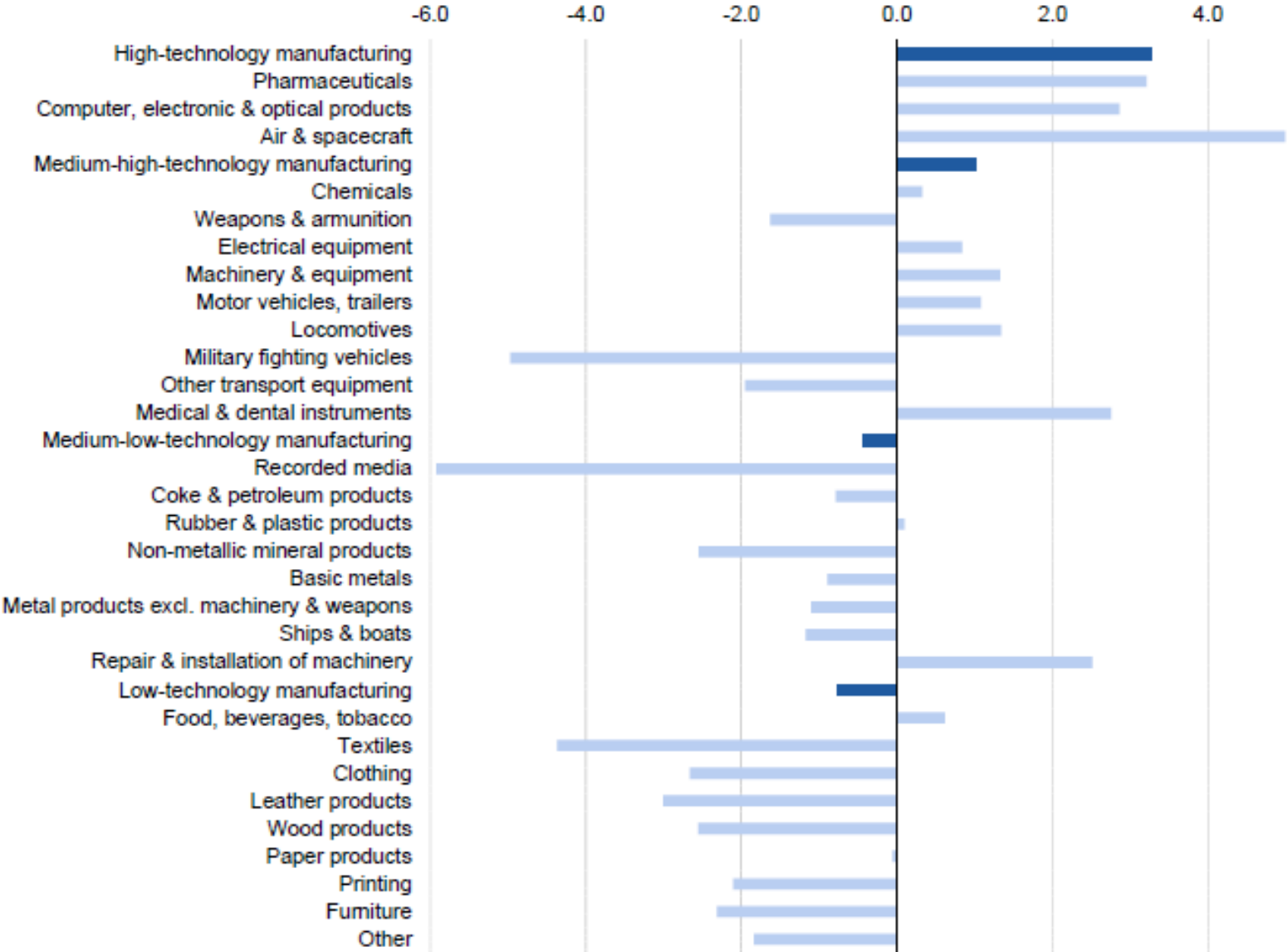
■ Changes in the share of the world export market (in %, 2000-2010)

◆ Changes in the share of the total exports of EU countries (in %, 2000-2010)

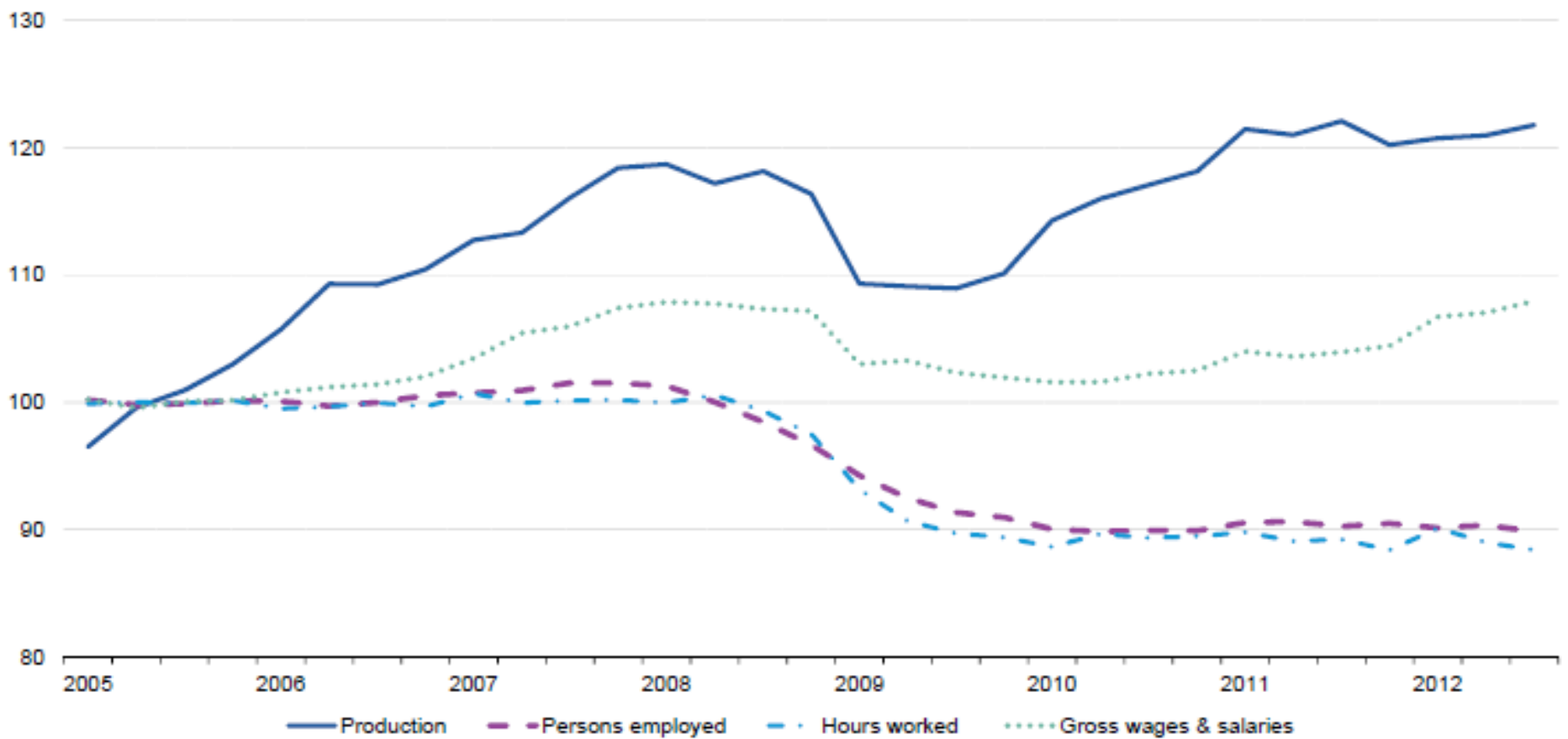


Source: European Commission

**Figure 5: Index of production, annual average growth rates 2005-2011, EU-27 working day adjusted**



**Figure 6: Production and labour input indicators for high-technology manufacturing <sup>(1)</sup>, EU-27, seasonally adjusted (2005=100)**



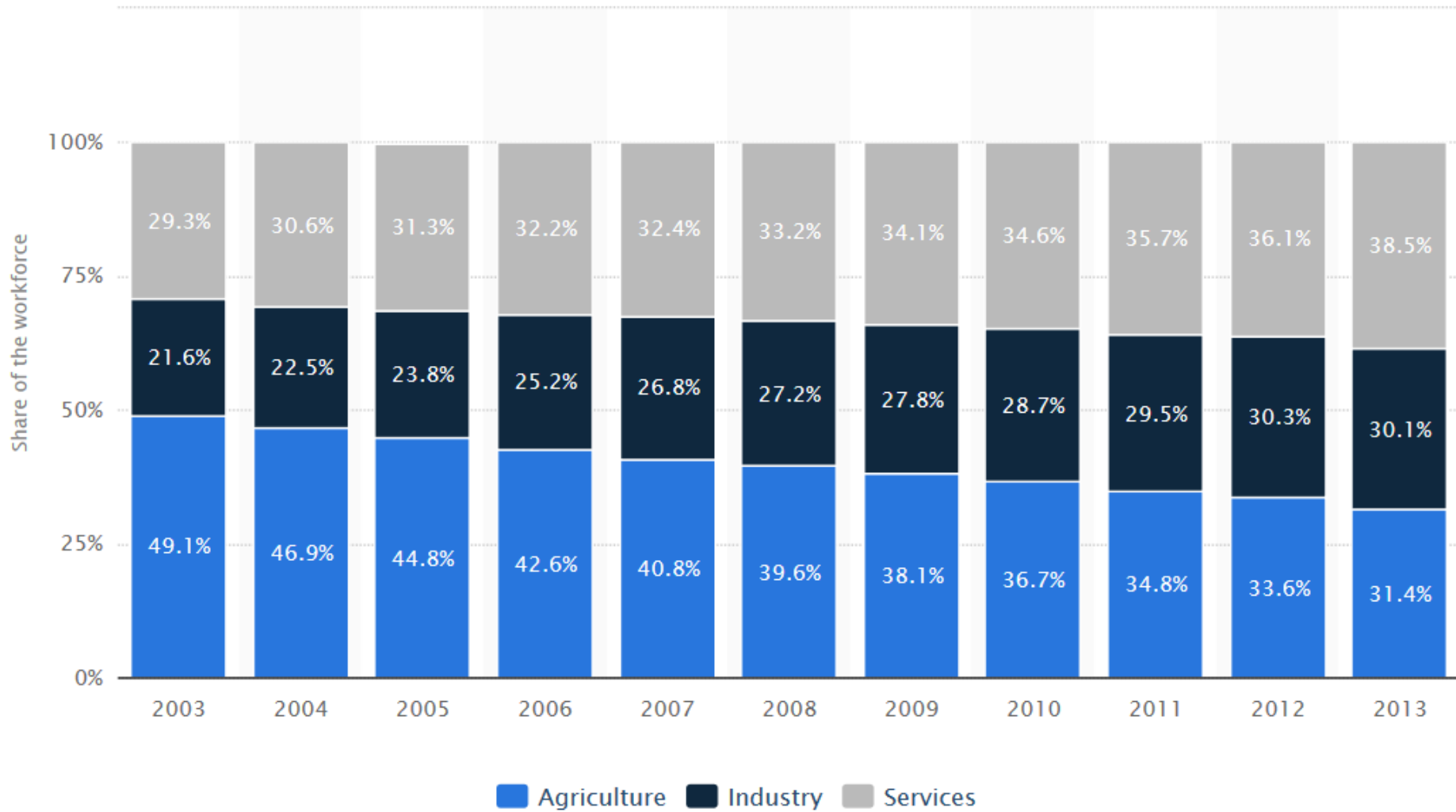


# Comparison of World Economic Leaders

|                              | EU28            | USA             | China           |
|------------------------------|-----------------|-----------------|-----------------|
| Labor force                  | 238 mil.        | 163 mil.        | 804 mil.        |
| Product (PPP)                | 23.0 trill. USD | 21.5 trill. USD | 27.5 trill. USD |
| GDP per capita (PPP)         | 43,119 USD      | 65,062 USD      | 19,559 USD      |
| Exports                      | 1.96 trill. USD | 1.58 trill. USD | 2.48 trill. USD |
| Industry value added (% GDP) | 24,5%           | 18,9%           | 40,5%           |

Export value – selected countries: Germany 1,401; Japan 683; Korea 577; UK 437; Mexico 407; Russia 337; India 303; Brazil 217; Czechia 157.

# China – distribution of workforce



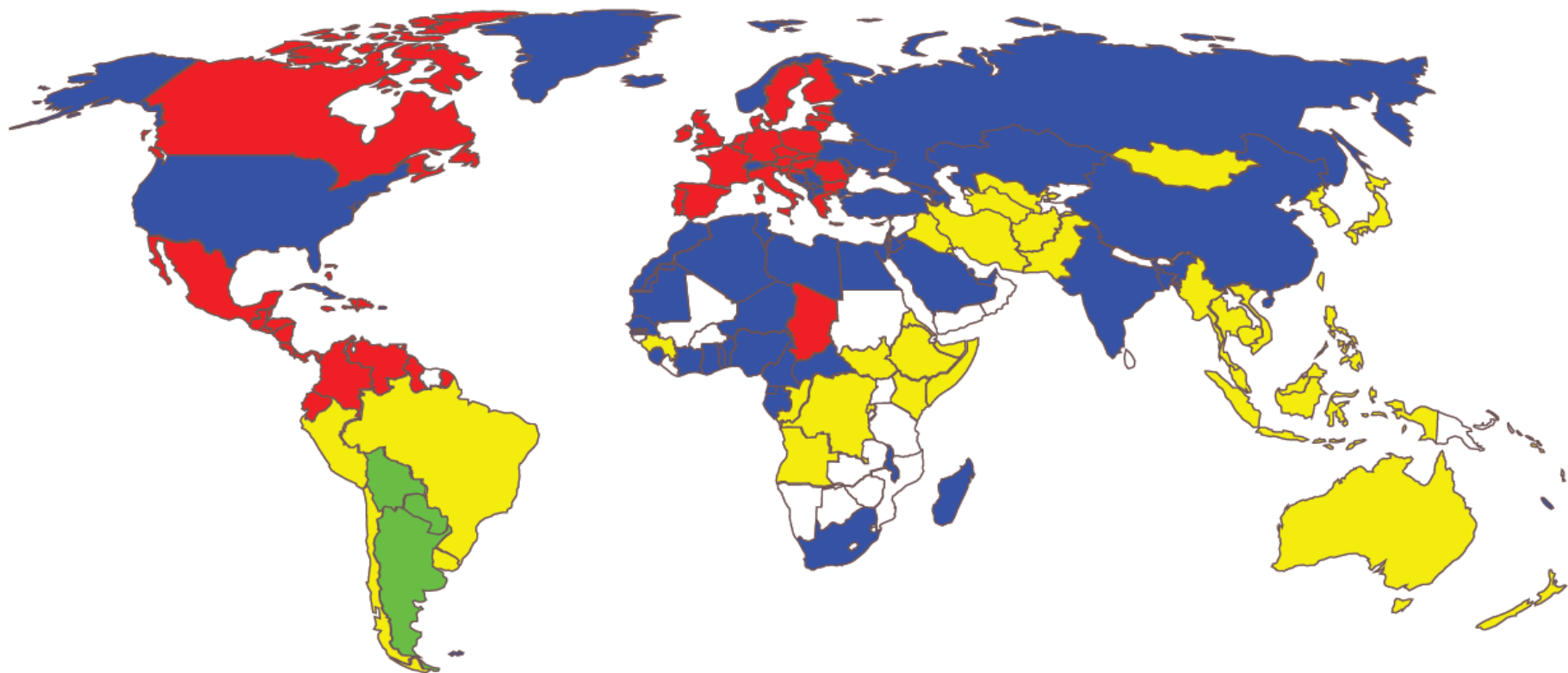
# **EU – World**

## **2017-2018**

## Share in world GDP (PPP, %)

| Country        | 2007  | 2008  | 2009  | 2010  | 2011  | 2012  | 2013  | 2014  | 2015  | 2016  | 2017  |
|----------------|-------|-------|-------|-------|-------|-------|-------|-------|-------|-------|-------|
| World          | 100.0 | 100.0 | 100.0 | 100.0 | 100.0 | 100.0 | 100.0 | 100.0 | 100.0 | 100.0 | 100.0 |
| Argentina      | 0.8   | 0.9   | 0.8   | 0.8   | 0.9   | 0.8   | 0.8   | 0.8   | 0.8   | 0.7   | 0.7   |
| Australia      | 1.0   | 1.0   | 1.1   | 1.0   | 1.0   | 1.0   | 1.0   | 1.0   | 1.0   | 1.0   | 1.0   |
| Brazil         | 3.0   | 3.1   | 3.1   | 3.1   | 3.1   | 3.1   | 3.1   | 3.0   | 2.8   | 2.6   | 2.6   |
| Canada         | 1.6   | 1.6   | 1.5   | 1.5   | 1.5   | 1.5   | 1.5   | 1.5   | 1.4   | 1.4   | 1.4   |
| China          | 11.3  | 12.0  | 13.2  | 13.9  | 14.6  | 15.3  | 15.9  | 16.5  | 17.1  | 17.7  | 18.2  |
| India          | 5.2   | 5.2   | 5.7   | 5.9   | 6.1   | 6.2   | 6.4   | 6.7   | 7.0   | 7.2   | 7.4   |
| Indonesia      | 2.0   | 2.1   | 2.2   | 2.2   | 2.3   | 2.4   | 2.4   | 2.4   | 2.5   | 2.5   | 2.6   |
| Japan          | 5.6   | 5.3   | 5.1   | 5.0   | 4.8   | 4.7   | 4.7   | 4.5   | 4.5   | 4.4   | 4.3   |
| Mexico         | 2.2   | 2.1   | 2.0   | 2.0   | 2.0   | 2.0   | 2.0   | 2.0   | 2.0   | 2.0   | 1.9   |
| Russia         | 3.9   | 3.9   | 3.7   | 3.6   | 3.7   | 3.7   | 3.6   | 3.5   | 3.3   | 3.2   | 3.2   |
| Saudi Arabia   | 1.3   | 1.4   | 1.4   | 1.4   | 1.4   | 1.5   | 1.5   | 1.5   | 1.5   | 1.5   | 1.4   |
| South Africa   | 0.7   | 0.7   | 0.7   | 0.7   | 0.7   | 0.7   | 0.7   | 0.6   | 0.6   | 0.6   | 0.6   |
| South Korea    | 1.6   | 1.6   | 1.6   | 1.6   | 1.6   | 1.6   | 1.6   | 1.6   | 1.6   | 1.6   | 1.6   |
| Turkey         | 1.4   | 1.4   | 1.4   | 1.4   | 1.5   | 1.5   | 1.6   | 1.6   | 1.7   | 1.7   | 1.7   |
| United States  | 18.2  | 17.6  | 17.2  | 16.7  | 16.3  | 16.2  | 15.9  | 15.8  | 15.7  | 15.5  | 15.3  |
| EU-28          | 20.7  | 20.3  | 19.5  | 18.9  | 18.5  | 17.8  | 17.3  | 17.0  | 16.9  | 16.7  | 16.5  |
| France         | 2.8   | 2.8   | 2.7   | 2.6   | 2.6   | 2.5   | 2.4   | 2.4   | 2.3   | 2.3   | 2.2   |
| Germany        | 4.0   | 3.9   | 3.7   | 3.7   | 3.7   | 3.6   | 3.5   | 3.4   | 3.4   | 3.3   | 3.3   |
| Italy          | 2.6   | 2.5   | 2.4   | 2.3   | 2.2   | 2.1   | 2.0   | 1.9   | 1.9   | 1.9   | 1.8   |
| United Kingdom | 2.8   | 2.7   | 2.6   | 2.5   | 2.5   | 2.4   | 2.4   | 2.4   | 2.4   | 2.3   | 2.3   |

## Merchandise trade 2017 - Main trade partner by reporter



- EU-28 as first trade partner
- US as first trade partner
- China as first trade partner
- Brazil as first trade partner

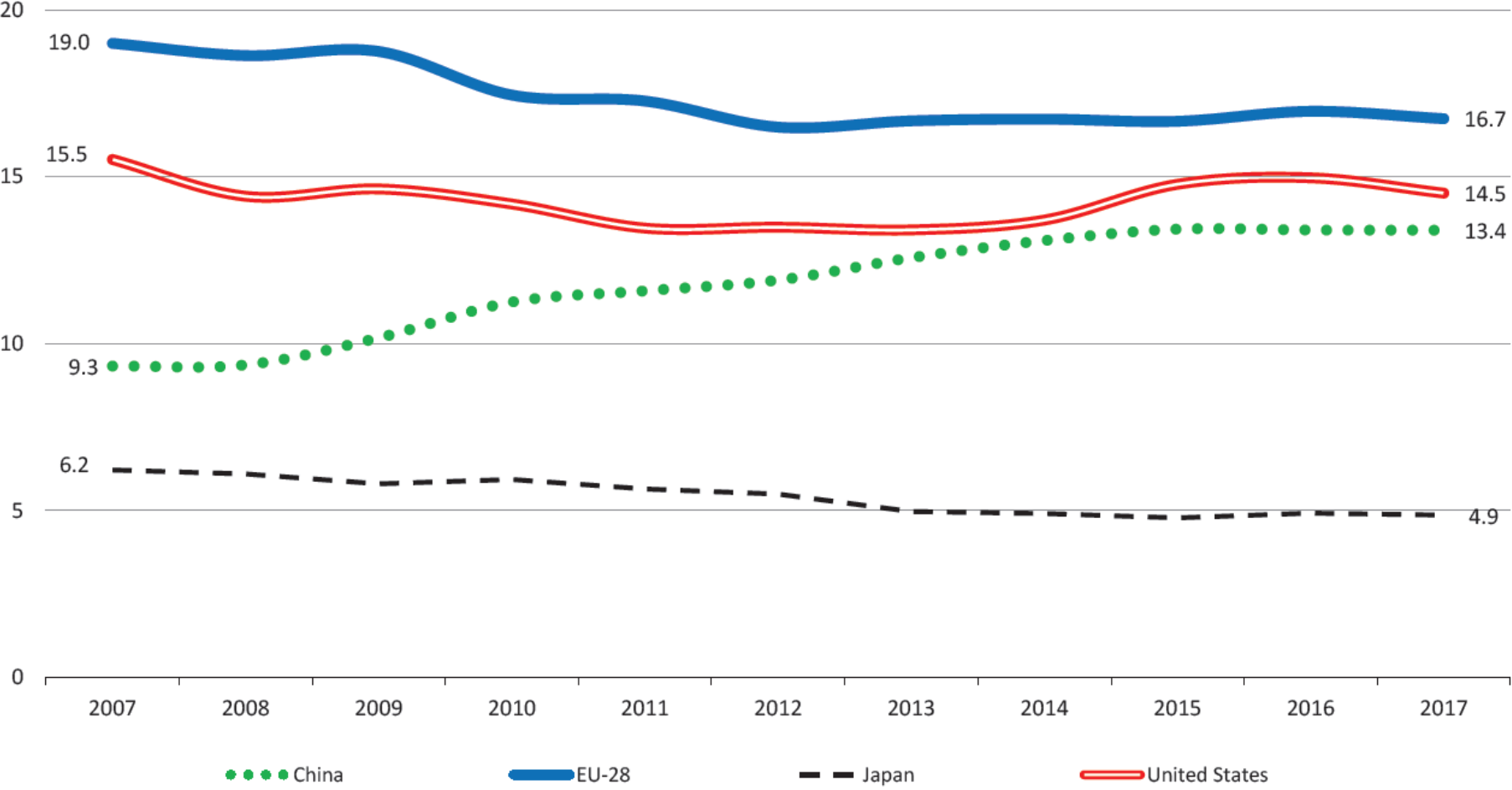
Total trade i.e. exports + imports

## Global external trade balances in goods and services (billion EUR)

| Country        | 2007   | 2008   | 2009   | 2010               | 2011              | 2012   | 2013   | 2014   | 2015   | 2016   | 2017   |
|----------------|--------|--------|--------|--------------------|-------------------|--------|--------|--------|--------|--------|--------|
| Argentina      | 7.9    | 7.6    | 11.3   | 7.3                | 4.6               | 4.8    | -3.8   | -1.8   | -8.0   | -9.1   | -16.9  |
| Australia      | -19.9  | -15.5  | -12.4  | 1.5                | 8.8               | -16.7  | -6.0   | -8.2   | -29.9  | -12.3  | 0.9    |
| Brazil         | 10.5   | -1.6   | -1.6   | -15.5              | -14.9             | -26.6  | -44.2  | -49.5  | -24.8  | 8.1    | 21.4   |
| Canada         | 4.1    | 6.4    | -27.7  | -37.5              | -35.4             | -44.8  | -40.5  | -27.0  | -51.1  | -49.6  | -51.2  |
| China          | 188.2  | 194.4  | 125.3  | 127.8              | 79.8              | 119.1  | 103.7  | 125.2  | 416.3  | 275.2  | 184.5  |
| India          | -47.4  | -73.4  | -57.3  | -94.8              | -104.0            | -138.2 | -98.3  | -85.8  | -84.1  | -59.8  | -97.0  |
| Indonesia      | 20.3   | -3.2   | 7.4    | 9.5                | 11.7              | -9.5   | -12.2  | -9.0   | -0.9   | -5.2   | 0.3    |
| Japan          | 40.4   | -12.5  | -4.4   | 34.3               | -48.3             | -105.2 | -115.5 | -113.4 | -35.3  | 24.9   | 18.4   |
| Mexico         | -25.2  | -29.4  | -20.5  | -24.3              | -27.0             | -28.5  | -28.3  | -30.0  | -43.1  | -40.3  | -40.1  |
| Russia         | 99.3   | 117.1  | 76.4   | 98.0               | 120.0             | 125.3  | 116.0  | 117.3  | 111.9  | 71.8   | 87.5   |
| Saudi Arabia   | 101.6  | 153.4  | 43.6   | 90.0               | 172.2             | 217.7  | 175.0  | 129.2  | -7.5   | 0.9    | 29.8   |
| South Africa   | -20.9  | -17.6  | -13.5  | -0.1               | -2.6              | -9.4   | -11.3  | -11.2  | -8.6   | -4.7   | 0.8    |
| South Korea    | 1.1    | -13.5  | 22.0   | 20.3               | 13.5              | 18.0   | 28.3   | 32.7   | 67.9   | 65.1   | 48.7   |
| Turkey         | -36.0  | -34.7  | -14.4  | -41.4              | -61.5             | -47.9  | -57.4  | -43.6  | -35.3  | -36.9  | -50.2  |
| United States  | -539.1 | -504.6 | -301.6 | -404.8             | -383.2            | -409.5 | -338.5 | -350.8 | -428.7 | -440.7 | -490.7 |
| EU-28          | -128.8 | -204.8 | -58.6  | -72.8 <sup>b</sup> | -39.8             | 53.5   | 228.5  | 175.3  | 202.4  | 165.5  | 203.8  |
| France         | 6.6    | 4.3    | 22.3   | 22.1               | 10.5 <sup>b</sup> | 28.1   | 30.4   | 28.5   | 42.8   | 38.4   | 54.9   |
| Germany        | 60.6   | 62.8   | 68.0   | 82.1 <sup>b</sup>  | 96.8              | 140.3  | 150.1  | 170.3  | 188.3  | 188.6  | 195.2  |
| Italy          | -20.1  | -29.0  | -7.6   | -24.8 <sup>b</sup> | -20.5             | 6.3    | 25.5   | 32.9   | 39.0   | 44.3   | 45.6   |
| United Kingdom | -24.1  | -26.8  | -21.0  | -29.5 <sup>b</sup> | -12.2             | -27.3  | 73.4   | 34.8   | 58.6   | 5.4    | 26.1   |

Coverage: excluding intra-EU trade.

Share in world trade in goods and services in selected countries (%)



Coverage: excluding intra-EU trade.

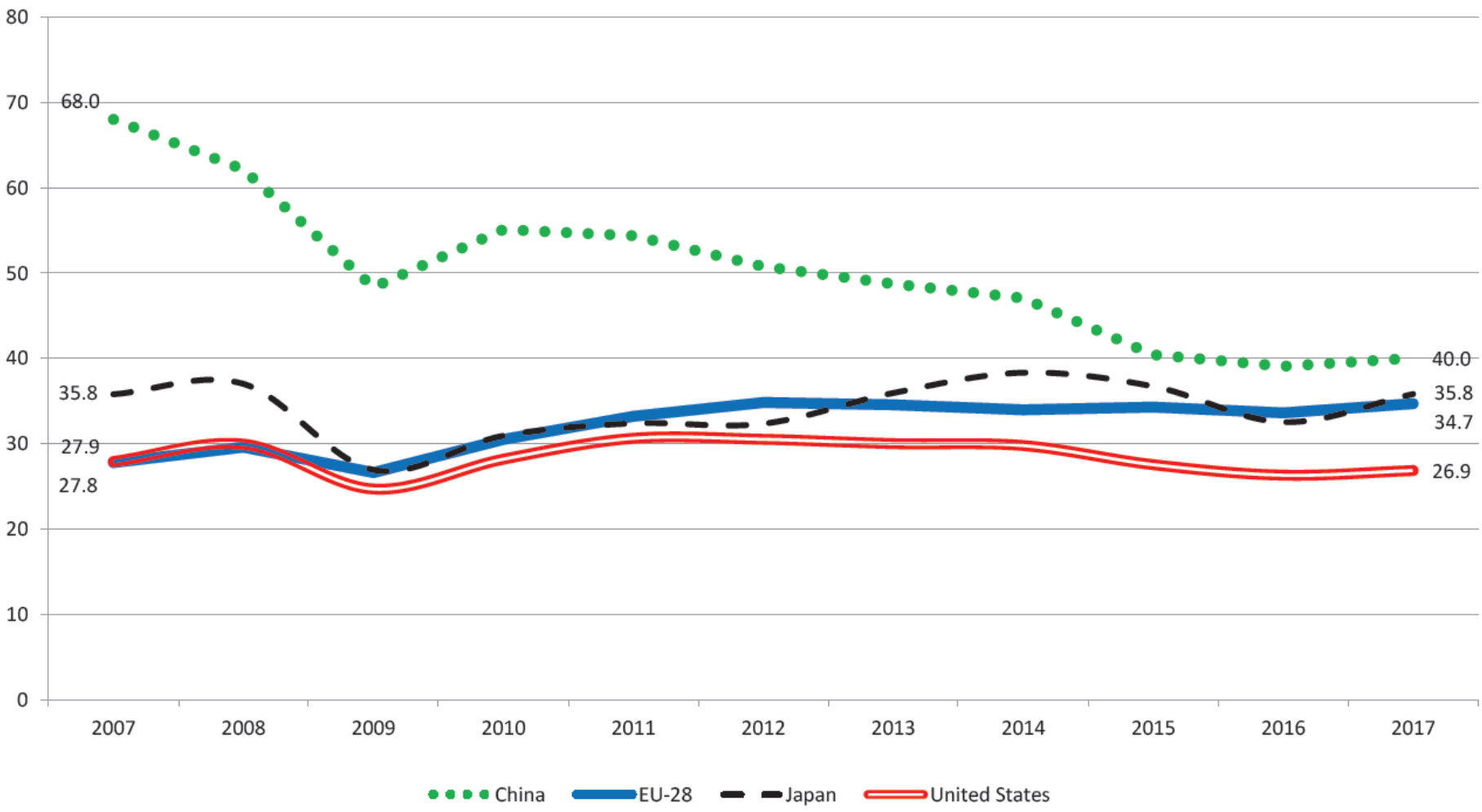
## Share in world trade in goods and services (%)

| Country        | 2007  | 2008  | 2009             | 2010              | 2011             | 2012  | 2013  | 2014  | 2015  | 2016  | 2017  |
|----------------|-------|-------|------------------|-------------------|------------------|-------|-------|-------|-------|-------|-------|
| World          | 100.0 | 100.0 | 100.0            | 100.0             | 100.0            | 100.0 | 100.0 | 100.0 | 100.0 | 100.0 | 100.0 |
| Argentina      | 0.5   | 0.5   | 0.5              | 0.5               | 0.5              | 0.5   | 0.5   | 0.4   | 0.4   | 0.5   | 0.5   |
| Australia      | 1.5   | 1.6   | 1.7              | 1.7               | 1.8              | 1.8   | 1.7   | 1.6   | 1.5   | 1.5   | 1.6   |
| Brazil         | 1.3   | 1.5   | 1.5              | 1.6               | 1.7              | 1.6   | 1.7   | 1.6   | 1.4   | 1.3   | 1.3   |
| Canada         | 3.7   | 3.4   | 3.3              | 3.3               | 3.2              | 3.1   | 3.1   | 3.1   | 3.1   | 3.0   | 3.0   |
| China          | 9.3   | 9.4   | 10.2             | 11.2              | 11.6             | 11.9  | 12.6  | 13.1  | 13.4  | 13.4  | 13.4  |
| India          | 2.1   | 2.3   | 2.4              | 2.7               | 2.9              | 2.9   | 2.8   | 2.8   | 2.8   | 2.8   | 3.0   |
| Indonesia      | 0.9   | 1.0   | 1.0              | 1.1               | 1.2              | 1.2   | 1.1   | 1.1   | 1.0   | 1.0   | 1.1   |
| Japan          | 6.2   | 6.1   | 5.8              | 5.9               | 5.6              | 5.5   | 5.0   | 4.9   | 4.8   | 4.9   | 4.9   |
| Mexico         | 2.4   | 2.2   | 2.1              | 2.2               | 2.2              | 2.2   | 2.2   | 2.3   | 2.5   | 2.6   | 2.6   |
| Russia         | 2.5   | 2.8   | 2.3              | 2.4               | 2.7              | 2.8   | 2.8   | 2.6   | 2.0   | 1.8   | 2.0   |
| Saudi Arabia   | 1.7   | 2.0   | 1.6 <sup>b</sup> | 1.6               | 1.9              | 2.0   | 1.9   | 1.9   | 1.5   | 1.3   | 1.2   |
| South Africa   | 0.7   | 0.7   | 0.6              | 0.7               | 0.7              | 0.7   | 0.6   | 0.6   | 0.6   | 0.6   | 0.6   |
| South Korea    | 3.4   | 3.4   | 3.5              | 3.6               | 3.6              | 3.5   | 3.4   | 3.5   | 3.5   | 3.4   | 3.5   |
| Turkey         | 1.2   | 1.3   | 1.2              | 1.2               | 1.2              | 1.2   | 1.3   | 1.3   | 1.2   | 1.2   | 1.3   |
| United States  | 15.5  | 14.4  | 14.6             | 14.2              | 13.5             | 13.5  | 13.4  | 13.7  | 14.8  | 15.0  | 14.5  |
| EU-28          | 19.0  | 18.6  | 18.8             | 17.4 <sup>b</sup> | 17.3             | 16.5  | 16.7  | 16.7  | 16.7  | 17.0  | 16.7  |
| France         | 2.0   | 2.0   | 2.2              | 1.9               | 1.9 <sup>b</sup> | 1.8   | 1.8   | 1.8   | 1.7   | 1.8   | 1.7   |
| Germany        | 4.0   | 3.9   | 4.0              | 3.7 <sup>b</sup>  | 3.7              | 3.5   | 3.5   | 3.5   | 3.5   | 3.6   | 3.6   |
| Italy          | 1.9   | 1.9   | 1.8              | 1.7 <sup>b</sup>  | 1.6              | 1.5   | 1.5   | 1.4   | 1.4   | 1.4   | 1.4   |
| United Kingdom | 2.9   | 2.6   | 2.7              | 2.5 <sup>b</sup>  | 2.5              | 2.4   | 2.5   | 2.4   | 2.6   | 2.6   | 2.4   |

Coverage: excluding intra-EU trade.



Trade in goods and services in selected countries (% of GDP)



Coverage: excluding intra-EU trade.

## EU trade (goods)

|              |     | 2006  | 2008  | 2010  | 2012  | 2014  | 2016  | 2018  |
|--------------|-----|-------|-------|-------|-------|-------|-------|-------|
| <b>World</b> | IMP | 1,368 | 1,585 | 1,532 | 1,799 | 1,693 | 1,708 | 1,980 |
|              | EXP | 1,153 | 1,309 | 1,354 | 1,685 | 1,704 | 1,746 | 1,956 |
|              | BAL | -216  | -276  | -178  | -114  | 11    | 37    | -25   |
| <b>US</b>    | IMP | 171   | 183   | 175   | 209   | 209   | 249   | 267   |
|              | EXP | 267   | 248   | 243   | 294   | 312   | 364   | 406   |
|              | BAL | 96    | 65    | 69    | 84    | 102   | 115   | 139   |
| <b>China</b> | IMP | 196   | 249   | 284   | 292   | 303   | 352   | 395   |
|              | EXP | 64    | 78    | 114   | 144   | 165   | 170   | 210   |
|              | BAL | -132  | -171  | -171  | -148  | -138  | -183  | -185  |

## EU trade partners – goods (2018)

| Imports    |       |         | Exports    |       |         | Total trade |       |         |
|------------|-------|---------|------------|-------|---------|-------------|-------|---------|
|            | value | share % |            | value | share % |             | value | share % |
| <b>CH</b>  | 395   | 19.9    | <b>US</b>  | 406   | 20.8    | <b>US</b>   | 674   | 17.1    |
| <b>US</b>  | 267   | 13.5    | <b>CH</b>  | 210   | 10.7    | <b>CH</b>   | 605   | 15.4    |
| <b>RUS</b> | 168   | 8.5     | <b>SWI</b> | 157   | 8.0     | <b>SWI</b>  | 266   | 6.7     |
| <b>SWI</b> | 109   | 5.5     | <b>RUS</b> | 85    | 4.4     | <b>RUS</b>  | 254   | 6.4     |
| <b>NOR</b> | 84    | 4.2     | <b>TUR</b> | 77    | 4.0     | <b>TUR</b>  | 153   | 3.9     |
| <b>TUR</b> | 76    | 3.8     | <b>JAP</b> | 65    | 3.3     | <b>NOR</b>  | 138   | 3.5     |
| <b>JAP</b> | 71    | 3.6     | <b>NOR</b> | 54    | 2.8     | <b>JAP</b>  | 135   | 3.4     |
| <b>KOR</b> | 51    | 2.6     | <b>KOR</b> | 49    | 2.5     | <b>KOR</b>  | 100   | 2.5     |
| <b>IND</b> | 46    | 2.3     | <b>IND</b> | 46    | 2.3     | <b>IND</b>  | 92    | 2.3     |
| <b>VIE</b> | 38    | 1.9     | <b>CAN</b> | 41    | 2.1     | <b>CAN</b>  | 72    | 1.8     |

| <b>EU – US trade</b>           | <b>Imports</b> |         | <b>Exports</b> |         |
|--------------------------------|----------------|---------|----------------|---------|
|                                | bil EUR        | % total | bil EUR        | % total |
| <i>food</i>                    | 12             | 4.4     | 21             | 5.2     |
| <i>steel</i>                   | 1              | 0.5     | 7              | 1.7     |
| <b>chemicals</b>               | 55             | 20.7    | 99             | 24.4    |
| - pharmaceuticals              | 29             | 10.9    | 58             | 14.3    |
| <b>mach. and transport eq.</b> | 111            | 41.6    | 173            | 42.6    |
| - transport eq.                | 35             | 13.0    | 74             | 18.3    |
| -- automotive                  | 9              | 3.4     | 47             | 11.6    |
| - power gen. mach.             | 33             | 12.5    | 19             | 4.6     |
| - non elect. mach.             | 19             | 7.0     | 48             | 11.7    |
| - elect. mach.                 | 11             | 4.0     | 18             | 4.5     |
| <b>other manufactures</b>      | 29             | 11.0    | 47             | 11.4    |

| <b>EU – China trade</b>          | <b>imports</b> |         | <b>exports</b> |         |
|----------------------------------|----------------|---------|----------------|---------|
|                                  | bil EUR        | % total | bil EUR        | % total |
| <b>agri. products</b>            | 8              | 2.0     | 16             | 7.5     |
| <b>fuel and mining</b>           | 5              | 1.2     | 14             | 6.5     |
| <b>chemicals</b>                 | 21             | 5.4     | 27             | 12.8    |
| <b>other semi. manu.</b>         | 32             | 8.0     | 10             | 4.5     |
| <b>mach. and trasport eq.</b>    | 209            | 53.1    | 112            | 53.4    |
| <b>- office and telecom.</b>     | 123            | 31.1    | 10             | 4.5     |
| <b>-- elect.data processing.</b> | 50             | 12.6    | 1              | 0.6     |
| <b>-- telecom. eq.</b>           | 67             | 17.1    | 3              | 1.3     |
| <b>- transport. eq</b>           | 13             | 3.2     | 50             | 23.8    |
| <b>- non elect. mach.</b>        | 26             | 6.6     | 32             | 15.0    |
| <b>- elect. mach.</b>            | 42             | 10.7    | 16             | 7.5     |
| <b>clothing</b>                  | 29             | 7.4     | 2              | 0.9     |
| <b>other manufactures</b>        | 75             | 19.0    | 19             | 8.9     |

| <b>EU – JAP trade</b>          | <b>Imports</b> |         | <b>Exports</b> |         |
|--------------------------------|----------------|---------|----------------|---------|
|                                | bil EUR        | % total | bil EUR        | % total |
| <i>food</i>                    | 0.4            | 0.5     | 7              | 10.0    |
| <b>chemicals</b>               | 7              | 10.3    | 15             | 22.6    |
| - pharmaceuticals              | 1              | 1.8     | 9              | 13.5    |
| <b>mach. and trasport eq.</b>  | 47             | 66.9    | 25             | 39.1    |
| - transport eq.                | 20             | 27.7    | 13             | 20.7    |
| -- automotive                  | 14             | 20.3    | 10             | 15.9    |
| - other machinery              | 21             | 29.6    | 10             | 15.7    |
| - non elect. mach.             | 12             | 17.4    | 6              | 8.6     |
| - elect. mach.                 | 10             | 4,2     | 17             | 4,6     |
| <b>Other manu – scientific</b> | 4              | 6.0     | 4              | 5.4     |

| <b>EU – RUS trade</b>         | <b>Imports</b> |         | <b>Exports</b> |         |
|-------------------------------|----------------|---------|----------------|---------|
|                               | bil EUR        | % total | bil EUR        | % total |
| <b>food</b>                   | <b>2</b>       | 1.3     | <b>6</b>       | 6.7     |
| <b>fuels and mining</b>       | <b>125</b>     | 74.2    | <b>1</b>       | 1.6     |
| <b>chemicals</b>              | <b>6</b>       | 3.4     | <b>18</b>      | 20.8    |
| <b>mach. and trasport eq.</b> | <b>2</b>       | 1.3     | <b>39</b>      | 45.4    |
| <b>- transport eq.</b>        | <b>0,7</b>     | 0.4     | <b>13</b>      | 15.1    |
| <b>- non elect. mach.</b>     | <b>0.4</b>     | 0.2     | <b>15</b>      | 17.3    |
| <b>- elect. mach.</b>         | <b>0.4</b>     | 0.3     | <b>5</b>       | 5.8     |
| <b>clothing</b>               | <b>0.03</b>    | 0,0     | <b>3</b>       | 3.0     |

## EU-28 trade in services with extra EU-28 by type (billion EUR, %)

| EBOPS   | Exports       |                        |                        |                   | Imports       |                        |                        |                   | Trade balance |
|---|---------------|------------------------|------------------------|-------------------|---------------|------------------------|------------------------|-------------------|---------------|
|   | Value<br>2016 | Share in<br>total 2016 | Variation<br>2015-2016 | CAGR<br>2012-2016 | Value<br>2016 | Share in<br>total 2016 | Variation<br>2015-2016 | CAGR<br>2012-2016 | 2016          |
| <b>TOTAL</b>  | <b>844.9</b>  | <b>100%</b>            | <b>- 0.3%</b>          | <b>5.3%</b>       | <b>711.8</b>  | <b>100%</b>            | <b>1.0%</b>            | <b>8.2%</b>       | <b>133.1</b>  |
| Manufacturing services on physical inputs owned by others | 19.5          | 2.3%                   | - 1.8%                 | - 1.4%            | 8.9           | 1.3%                   | 4.2%                   | 4.5%              | 10.5          |
| Maintenance and repair services n.i.e.                    | 11.9          | 1.4%                   | 0.3%                   | 13.4%             | 9.6           | 1.3%                   | 0.1%                   | 32.6%             | 2.4           |
| Transport   | 145.6         | 17.2%                  | - 2.2%                 | 0.2%              | 118.1         | 16.6%                  | - 3.0%                 | 0.0%              | 27.5          |
| Travel  | 112.3         | 13.3%                  | - 2.2%                 | 3.8%              | 99.1          | 13.9%                  | - 4.3%                 | 2.5%              | 13.1          |
| Construction  | 11.5          | 1.4%                   | - 10.2%                | 1.0%              | 5.0           | 0.7%                   | - 3.4%                 | - 3.3%            | 6.6           |
| Insurance and pension services                            | 31.6          | 3.7%                   | 24.4%                  | 0.0%              | 11.6          | 1.6%                   | 3.7%                   | 0.8%              | 20.1          |
| Financial services  | 89.7          | 10.6%                  | 2.1%                   | 5.2%              | 44.1          | 6.2%                   | 1.9%                   | 8.2%              | 45.6          |
| Charges for the use of intellectual property n.i.e.       | 64.7          | 7.7%                   | 0.4%                   | 15.5%             | 114.1         | 16.0%                  | - 0.3%                 | 26.8%             | - 49.4        |
| Telecommunications, computer, and information services    | 113.9         | 13.5%                  | - 0.3%                 | 9.0%              | 45.0          | 6.3%                   | - 28.4%                | 0.9%              | 68.9          |
| Other business services                                   | 226.1         | 26.8%                  | - 1.3%                 | 7.8%              | 239.6         | 33.7%                  | 15.0%                  | 12.8%             | - 13.4        |
| Personal, cultural and recreational services              | 9.4           | 1.1%                   | 6.7%                   | 6.1%              | 10.8          | 1.5%                   | - 4.7%                 | 4.3%              | - 1.4         |
| Government goods and services n.i.e.                      | 7.5           | 0.9%                   | - 2.6%                 | - 3.2%            | 5.9           | 0.8%                   | 19.4%                  | - 4.6%            | 1.6           |
| Services not allocated                                    | 1.1           | 0.1%                   | - 38.1%                | - 13.1%           | 0.1           | 0.0%                   | - 44.8%                | - 25.6%           | 1.0           |
| <i>Commercial services</i>                                | <b>837.4</b>  | <b>99.1%</b>           | <b>- 0.3%</b>          | <b>5.4%</b>       | <b>705.9</b>  | <b>99.2%</b>           | <b>0.8%</b>            | <b>8.3%</b>       | <b>131.5</b>  |



## EU-28 trade in services by leading trade partner, 2016 (billion EUR, %)

| Rank | Leading clients      | Exports | Share in exports | Cumulative share |
|------|----------------------|---------|------------------|------------------|
|      | Extra EU-28          | 844.9   | 100.0%           | 100.0%           |
| 1    | USA                  | 218.0   | 25.8%            | 25.8%            |
| 2    | Switzerland          | 115.0   | 13.6%            | 39.4%            |
| 3    | China                | 38.3    | 4.5%             | 44.0%            |
| 4    | Japan                | 31.0    | 3.7%             | 47.6%            |
| 5    | Norway               | 27.9    | 3.3%             | 50.9%            |
| 6    | Russia               | 24.7    | 2.9%             | 53.9%            |
| 7    | Singapore            | 22.4    | 2.7%             | 56.5%            |
| 8    | Australia            | 18.8    | 2.2%             | 58.7%            |
| 9    | Canada               | 18.5    | 2.2%             | 60.9%            |
| 10   | United Arab Emirates | 14.9    | 1.8%             | 62.7%            |
| 11   | Saudi Arabia         | 13.7    | 1.6%             | 64.3%            |
| 12   | India                | 13.6    | 1.6%             | 65.9%            |
| 13   | Brazil               | 13.5    | 1.6%             | 67.5%            |
| 14   | South Korea          | 12.6    | 1.5%             | 69.0%            |
| 15   | Guernsey             | 12.4    | 1.5%             | 70.5%            |
| 16   | Turkey               | 11.8    | 1.4%             | 71.9%            |
| 17   | Hong Kong            | 10.9    | 1.3%             | 73.1%            |
| 18   | Jersey               | 10.1    | 1.2%             | 74.3%            |
| 19   | Mexico               | 9.8     | 1.2%             | 75.5%            |
| 20   | South Africa         | 7.8     | 0.9%             | 76.4%            |

| Rank | Leading suppliers    | Imports | Share in imports | Cumulative share |
|------|----------------------|---------|------------------|------------------|
|      | Extra EU 28          | 711.8   | 100.0%           | 100.0%           |
| 1    | USA                  | 219.3   | 30.8%            | 30.8%            |
| 2    | Switzerland          | 94.1    | 13.2%            | 44.0%            |
| 3    | China                | 29.6    | 4.2%             | 48.2%            |
| 4    | Bermuda              | 24.4    | 3.4%             | 51.6%            |
| 5    | Singapore            | 22.0    | 3.1%             | 54.7%            |
| 6    | Japan                | 18.0    | 2.5%             | 57.2%            |
| 7    | Bahamas              | 15.6    | 2.2%             | 59.4%            |
| 8    | India                | 15.3    | 2.1%             | 61.6%            |
| 9    | Norway               | 15.2    | 2.1%             | 63.7%            |
| 10   | Turkey               | 13.9    | 2.0%             | 65.6%            |
| 11   | United Arab Emirates | 13.2    | 1.8%             | 67.5%            |
| 12   | Canada               | 11.8    | 1.7%             | 69.2%            |
| 13   | Hong Kong            | 11.4    | 1.6%             | 70.8%            |
| 14   | Russia               | 11.3    | 1.6%             | 72.3%            |
| 15   | Cayman Isles         | 10.6    | 1.5%             | 73.8%            |
| 16   | Australia            | 8.3     | 1.2%             | 75.0%            |
| 17   | Brazil               | 7.9     | 1.1%             | 76.1%            |
| 18   | South Korea          | 6.6     | 0.9%             | 77.0%            |
| 19   | Thailand             | 6.3     | 0.9%             | 77.9%            |
| 20   | Jersey               | 5.5     | 0.8%             | 78.7%            |

## EU-28 trade balance in services by partner (billion EUR)

| Country       | 2006 | 2007 | 2008 | 2009 | 2010  | 2011  | 2012  | 2013  | 2014  | 2015  | 2016  |
|---------------|------|------|------|------|-------|-------|-------|-------|-------|-------|-------|
| Extra EU-28   | 71.0 | 87.0 | 71.3 | 83.0 | 104.7 | 135.6 | 167.4 | 179.7 | 164.3 | 142.4 | 133.1 |
| Argentina     | 0.2  | 0.4  | 0.5  | 0.6  | 1.1   | 1.4   | 1.6   | 1.9   | 2.0   | 2.2   | 2.4   |
| Australia     | 3.4  | 4.4  | 6.0  | 7.0  | 7.0   | 8.5   | 10.5  | 11.8  | 10.8  | 9.7   | 10.5  |
| Brazil        | 0.9  | 2.0  | 3.8  | 3.5  | 8.5   | 10.0  | 9.0   | 8.7   | 8.1   | 6.6   | 5.6   |
| Canada        | 2.1  | 2.2  | 2.5  | 4.2  | 4.4   | 5.2   | 5.9   | 6.3   | 5.5   | 6.4   | 6.7   |
| China         | 2.0  | 2.6  | 5.1  | 4.9  | 2.2   | 4.0   | 5.6   | 6.6   | 7.2   | 9.7   | 8.8   |
| India         | 1.6  | 1.5  | 0.8  | 1.8  | -1.0  | -2.4  | -1.0  | -0.7  | -0.4  | -0.1  | -1.7  |
| Indonesia     | 0.4  | 0.9  | 0.8  | 1.0  | 1.3   | 1.5   | 1.5   | 1.9   | 1.8   | 1.7   | 1.8   |
| Japan         | 5.6  | 6.0  | 3.4  | 5.3  | 4.9   | 4.7   | 9.4   | 9.7   | 10.0  | 11.6  | 13.0  |
| Mexico        | 1.7  | 1.4  | 1.3  | 1.7  | 2.6   | 3.5   | 4.0   | 4.2   | 4.4   | 4.8   | 4.8   |
| Russia        | 4.1  | 7.1  | 7.6  | 7.3  | 9.9   | 12.9  | 15.4  | 17.1  | 18.2  | 13.0  | 13.5  |
| Saudi Arabia  | 4.4  | 6.5  | 4.2  | 5.9  | 4.4   | 4.2   | 5.2   | 6.5   | 9.5   | 10.2  | 10.6  |
| South Africa  | 1.3  | 1.9  | 1.9  | 1.9  | 2.2   | 3.0   | 3.2   | 2.8   | 2.9   | 3.2   | 2.8   |
| South Korea   | 2.7  | 3.2  | 3.1  | 2.8  | 2.6   | 3.2   | 4.0   | 5.1   | 5.6   | 6.2   | 6.0   |
| Turkey        | -5.0 | -5.2 | -5.9 | -4.8 | -6.2  | -5.9  | -5.1  | -4.8  | -5.2  | -4.3  | -2.1  |
| United States | 8.6  | 9.2  | 0.0  | -2.1 | -3.2  | 7.1   | 14.9  | 17.1  | 5.9   | 17.9  | -1.3  |