

gender

29th April 2020

stereotypes about men and women

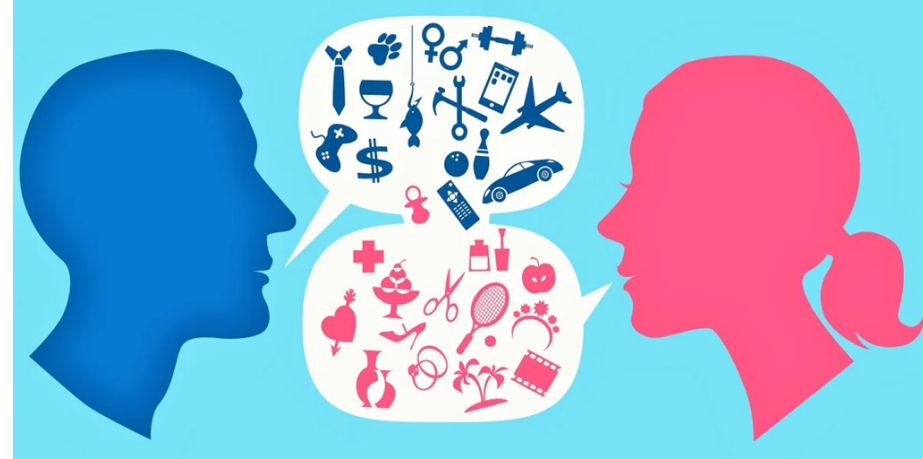
stereotypes about men and women

Feminine.

Not aggressive.
Dependent.
Easily influenced.
Submissive.
Passive.
Home-oriented.
Easily hurt emotionally.
Indecisive.
Talkative.
Gentle.
Sensitive to other's feelings.
Very desirous of security.
Cries a lot.
Emotional.
Verbal.
Kind.
Tactful.
Nurturing.

Masculine.

Aggressive.
Independent.
Not easily influenced.
Dominant.
Active.
Worldly.
Not easily hurt emotionally.
Decisive.
Not at all talkative.
Tough.
Less sensitive to other's feelings.
Not very desirous of security.
Rarely cries.
Logical.
Analytical.
Cruel.
Blunt.
Not nurturing.



stereotypes about men and women

<https://www.youtube.com/wat>



How are the genders valued in different cultures?

<https://www.istat.it/donne-uomini/index.html?lang=en>

gender (Facebook 2014)

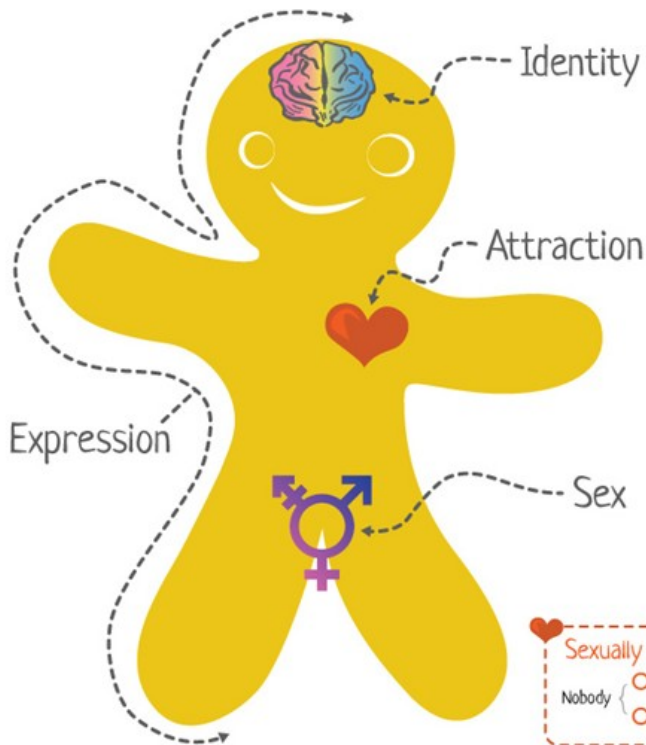


- Agender
- Androgyne
- Androgynous
- Bigender
- Cis
- Cisgender
- Cis Female
- Cis Male
- Cis Man
- Cis Woman
- Cisgender Female
- Cisgender Male
- Cisgender Man
- Cisgender Woman
- Female to Male
- FTM
- Gender Fluid
- Gender Nonconforming
- Gender Questioning
- Gender Variant
- Genderqueer
- Intersex
- Male to Female
- MTF
- Neither
- Neutrois
- Non-binary
- Other
- Pangender
- Trans
- Trans*
- Trans Female
- Trans* Female
- Trans Male
- Trans* Male
- Trans Man
- Trans* Man
- Trans Person
- Trans* Person
- Trans Woman
- Trans* Woman
- Transfeminine
- Transgender
- Transgender Female
- Transgender Male
- Transgender Man
- Transgender Person
- Transgender Woman
- Transmasculine
- Transsexual
- Transsexual Female
- Transsexual Male
- Transsexual Man
- Transsexual Person
- Transsexual Woman
- Two-Spirit

The Genderbread Person v3.3

by its pronounced **METROsexual**.com

Gender is one of those things everyone thinks they understand, but most people don't. Like *Inception*. Gender isn't binary. It's not either/or. In many cases it's both/and. A bit of this, a dash of that. This tasty little guide is meant to be an appetizer for gender understanding. It's okay if you're hungry for more. In fact, that's the idea.



Plot a point on both continua in each category to represent your identity; combine all ingredients to form your Genderbread

4 (of infinite) possible plot and label combos

Gender Identity

Indicates a lack of what's on the right.

Woman-ness

Man-ness

How you, in your head, define your gender; based on how much you align (or don't align) with what you understand to be the options for gender.

Options for Gender Identity:

- Woman-ness: "woman"
- Man-ness: "man"
- Two-spirit: "two-spirit"
- Gender-queer: "gender-queer"

Gender Expression

Feminine

Masculine

The ways you present gender; through your actions, dress, and demeanor; and how those presentations are interpreted based on gender norms.

Options for Gender Expression:

- Feminine: "butch"
- Feminine: "femme"
- Androgynous: "androgynous"
- Gender-neutral: "gender-neutral"

Biological Sex

Female-ness

Male-ness

The physical sex characteristics you're born with and develop, including genitalia, body shape, voice pitch, body hair; hormones, chromosomes, etc.

Options for Biological Sex:

- Female-ness: "male"
- Female-ness: "female"
- Intersex: "intersex"
- WtF Female: "WtF Female"

Sexually Attracted to

Nobody

(Women/Females/Femininity)

(Men/Males/Masculinity)

Romantically Attracted to

Nobody

(Women/Females/Femininity)

(Men/Males/Masculinity)

For a bigger bite, read more at <http://bit.ly/genderbread>

In each grouping, circle all that apply to you and plot a point, depicting the aspects of gender toward which you experience attraction.



EQUALITY VERSUS EQUITY



In the first image, it is assumed that everyone will benefit from the same supports. They are being treated equally.



In the second image, individuals are given different supports to make it possible for them to have equal access to the game. They are being treated equitably.



In the third image, all three can see the game without any supports or accommodations because the cause of the inequity was addressed. The systemic barrier has been removed.

tenses practice

https://docs.google.com/presentation/d/1aXusS_K31EdwUgP_vu0q9WWmugkb4emGsRGERMAeT3s/edit?usp=sharing