

Men

Deaths by age, Prague and South Moravia, 2020

Age	Prague	South Moravia
0	28	44
1	1	5
2	1	1
3	2	5
4	1	0
5	0	1
6	1	1
7	0	1
8	0	0
9	2	0
10	1	0
11	4	0
12	0	1
13	0	2
14	1	1
15	2	2
16	1	1
17	3	3
18	5	6
19	6	3
20	6	12
21	7	10
22	8	5
23	2	5
24	5	7
25	5	6
26	5	12
27	7	9
28	10	10
29	9	14
30	12	10
31	14	17
32	13	8
33	15	14
34	17	15
35	20	17
36	12	19
37	20	25
38	18	23
39	19	30
40	33	32
41	35	39
42	28	35
43	37	38
44	49	42
45	45	48
46	40	57
47	55	49
48	46	55

Age group	Prague
0-4	33
5-9	3
10-14	6
15-19	17
20-24	28
25-29	36
30-34	71
35-39	89
40-44	182
45-49	232
50-54	330
55-59	482
60-64	760
65-69	1,295
70-74	1,912
75-79	2,031
80+	5,095
Total	12,602

49	46	63
50	50	83
51	55	72
52	73	88
53	70	87
54	82	75
55	87	101
56	81	123
57	101	104
58	93	117
59	120	146
60	122	156
61	99	145
62	184	211
63	150	256
64	205	265
65	206	268
66	220	286
67	286	313
68	286	369
69	297	340
70	296	360
71	359	398
72	391	431
73	439	435
74	427	434
75	444	407
76	461	422
77	420	415
78	367	430
79	339	397
80	335	385
81	334	361
82	350	350
83	341	336
84	369	368
85	340	371
86	390	367
87	354	363
88	369	326
89	362	310
90	325	251
91	255	212
92	274	188
93	197	153
94	158	108
95	122	75
96	88	64
97	68	35
98	38	30
99	13	14
100	9	10

101	2	2
102	1	3
103	1	0
104	0	0
105	0	1
Total	12602	13220

South Moravia

55
3
4
15
39
51
64
114
186
272
405
591
1,033
1,576
2,058
2,071
4,683
13,220

Men**Population by age, Prague and South Moravia, 2020**

Age	Prague	South Moravia
0	15215	13554
1	15596	13811
2	15517	13787
3	15327	13549
4	15129	13307
5	14772	13176
6	14469	12871
7	14289	12615
8	14306	12809
9	14614	13194
10	14673	13406
11	14309	13326
12	13529	12826
13	12372	12089
14	11221	11434
15	10458	10949
16	9892	10592
17	9730	10437
18	10259	10424
19	10692	10325
20	10482	10353
21	10528	10401
22	10710	10511
23	11264	10788
24	12120	11573
25	13453	13031
26	15006	14481
27	16620	15350
28	18136	15914
29	19474	16118
30	20503	16282
31	21417	16680
32	22101	17012
33	22612	17413
34	22901	18042
35	22914	18294
36	22825	18204
37	23086	18197
38	23566	18347
39	24567	19119
40	25747	20232
41	26208	20850
42	26032	21111
43	25688	21369
44	25239	21496
45	24383	21143
46	22783	19915
47	20785	18358
48	19200	17139
49	18037	16366
50	16892	15850
51	16211	15409
52	15924	15121

Age group	Prague
0-4	76,784
5-9	72,450
10-14	66,104
15-19	51,031
20-24	55,104
25-29	82,689
30-34	109,534
35-39	116,958
40-44	128,914
45-49	105,188
50-54	81,067
55-59	72,579
60-64	65,311
65-69	67,209
70-74	60,810
75-79	40,773
80+	38,546
Total	1,291,051

53	15813	15224
54	16227	15714
55	16534	15907
56	15732	15195
57	14292	14157
58	13270	13543
59	12751	13327
60	12410	13342
61	12625	13751
62	13124	14337
63	13447	14603
64	13705	14446
65	13818	14134
66	13814	13989
67	13636	13790
68	13259	13321
69	12682	12719
70	12343	12235
71	12483	12035
72	12771	11908
73	12202	11147
74	11011	9755
75	10381	9042
76	9520	8617
77	8015	7691
78	6884	6850
79	5973	6037
80	5138	5098
81	4521	4398
82	3987	3851
83	3598	3382
84	3288	3114
85	3024	2798
86	2765	2459
87	2500	2092
88	2232	1755
89	1929	1467
90	1515	1160
91	1193	877
92	914	651
93	640	479
94	460	319
95	319	220
96	220	154
97	125	105
98	72	64
99	38	37
100	20	15
101	13	12
102	12	9
103	10	7
104	10	7
105	3	3
Total	1291051	1170299

South Moravia

68,008

64,665

63,081

52,727

53,626

74,894

85,429

92,161

105,058

92,921

77,318

72,129

70,479

67,953

57,080

38,237

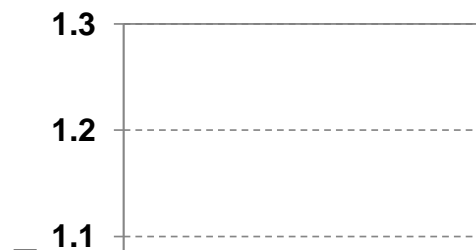
34,533

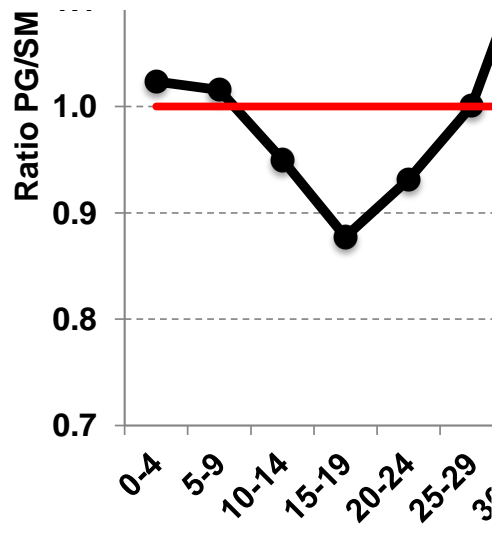
1,170,299

Deaths		
Age group	Prague	South Moravia
0-4	33	55
5-9	3	3
10-14	6	4
15-19	17	15
20-24	28	39
25-29	36	51
30-34	71	64
35-39	89	114
40-44	182	186
45-49	232	272
50-54	330	405
55-59	482	591
60-64	760	1,033
65-69	1,295	1,576
70-74	1,912	2,058
75-79	2,031	2,071
80+	5,095	4,683
Total	12,602	13,220

Population	
Age group	Prague
0-4	76,784
5-9	72,450
10-14	66,104
15-19	51,031
20-24	55,104
25-29	82,689
30-34	109,534
35-39	116,958
40-44	128,914
45-49	105,188
50-54	81,067
55-59	72,579
60-64	65,311
65-69	67,209
70-74	60,810
75-79	40,773
80+	38,546
Total	1,291,051

Population (%)	
Age group	Prague
0-4	5.95
5-9	5.61
10-14	5.12
15-19	3.95
20-24	4.27
25-29	6.40
30-34	8.48
35-39	9.06
40-44	9.99
45-49	8.15
50-54	6.28
55-59	5.62
60-64	5.06
65-69	5.21
70-74	4.71
75-79	3.16
80+	2.99
Total	100.00





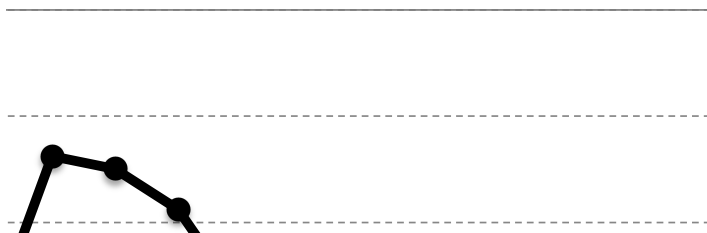
Men

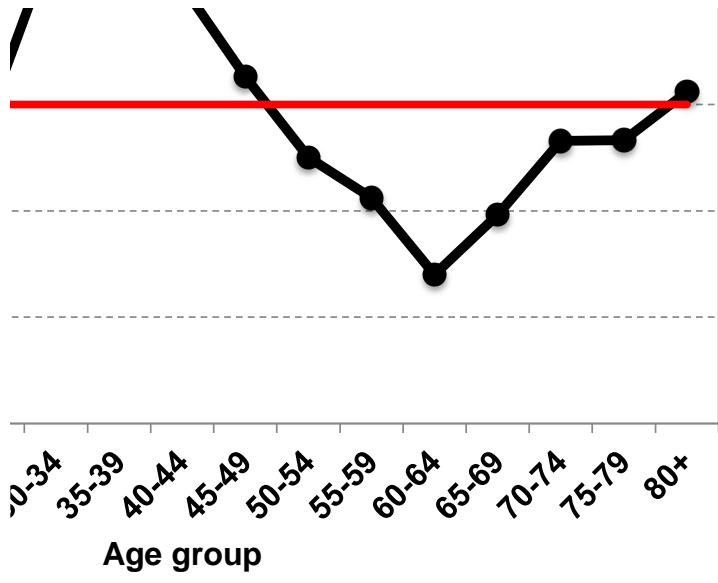
South Moravia
68,008
64,665
63,081
52,727
53,626
74,894
85,429
92,161
105,058
92,921
77,318
72,129
70,479
67,953
57,080
38,237
34,533
1,170,299

Age-specific death rate (ASDR)	
Age group	Prague
0-4	0.0004
5-9	0.0000
10-14	0.0001
15-19	0.0003
20-24	0.0005
25-29	0.0004
30-34	0.0006
35-39	0.0008
40-44	0.0014
45-49	0.0022
50-54	0.0041
55-59	0.0066
60-64	0.0116
65-69	0.0193
70-74	0.0314
75-79	0.0498
80+	0.1322
Total	0.2619
CDR per 1,000	9.76

South Moravia	Ratio PG/SM	Reference
5.81	1.02	1
5.53	1.02	1
5.39	0.95	1
4.51	0.88	1
4.58	0.93	1
6.40	1.00	1
7.30	1.16	1
7.87	1.15	1
8.98	1.11	1
7.94	1.03	1
6.61	0.95	1
6.16	0.91	1
6.02	0.84	1
5.81	0.90	1
4.88	0.97	1
3.27	0.97	1
2.95	1.01	1
100.00	1.00	

Age-specific death rate (ASDR) (%)	
Age group	Prague
0-4	0.16
5-9	0.02
10-14	0.03
15-19	0.13
20-24	0.19
25-29	0.17
30-34	0.25
35-39	0.29
40-44	0.54
45-49	0.84
50-54	1.55
55-59	2.54
60-64	4.44
65-69	7.36
70-74	12.00
75-79	19.02
80+	50.47
Total	100.00





South Moravia	Standardization	Prague	South Moravia
	Age group	(standard population)	(observed rates)
0.0008	0-4	76,784	0.0008
0.0000	5-9	72,450	0.0000
0.0001	10-14	66,104	0.0001
0.0003	15-19	51,031	0.0003
0.0007	20-24	55,104	0.0007
0.0007	25-29	82,689	0.0007
0.0007	30-34	109,534	0.0007
0.0012	35-39	116,958	0.0012
0.0018	40-44	128,914	0.0018
0.0029	45-49	105,188	0.0029
0.0052	50-54	81,067	0.0052
0.0082	55-59	72,579	0.0082
0.0147	60-64	65,311	0.0147
0.0232	65-69	67,209	0.0232
0.0361	70-74	60,810	0.0361
0.0542	75-79	40,773	0.0542
0.1356	80+	38,546	0.1356
0.2864	Total	1,291,051	
11.30			CDR per 1,000

South Moravia
0.28
0.02
0.02
0.10
0.25
0.24
0.26
0.43
0.62
1.02
1.83
2.86
5.12
8.10
12.59
18.91
47.35
100.00

Crude death rate (CDR) per 1,000 Prague, original
Crude death rate (CDR) per 1,000 South Moravia, original
Crude death rate (CDR) per 1,000 South Moravia, standardized

South Moravia (standardized deaths)	
62	
3	
4	
15	
40	
56	
82	
145	
228	
308	
425	
595	
957	
1,559	
2,192	
2,208	
5,227	
14,107	
10.93	

9.76
11.30
10.93

