

Prezidentské volby

Michal Pink

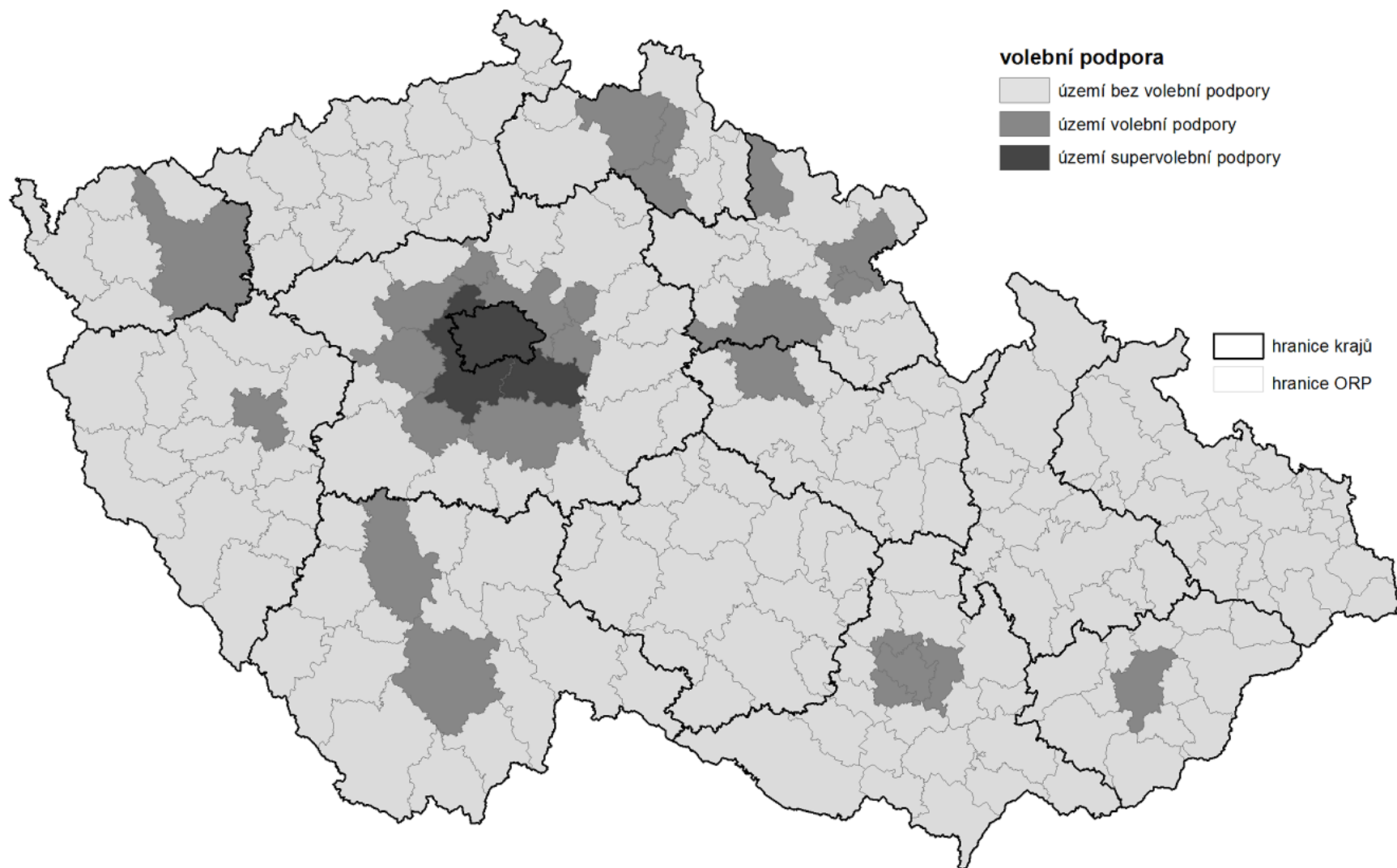
pink@fss.muni.cz

Prezidentské volby 2013

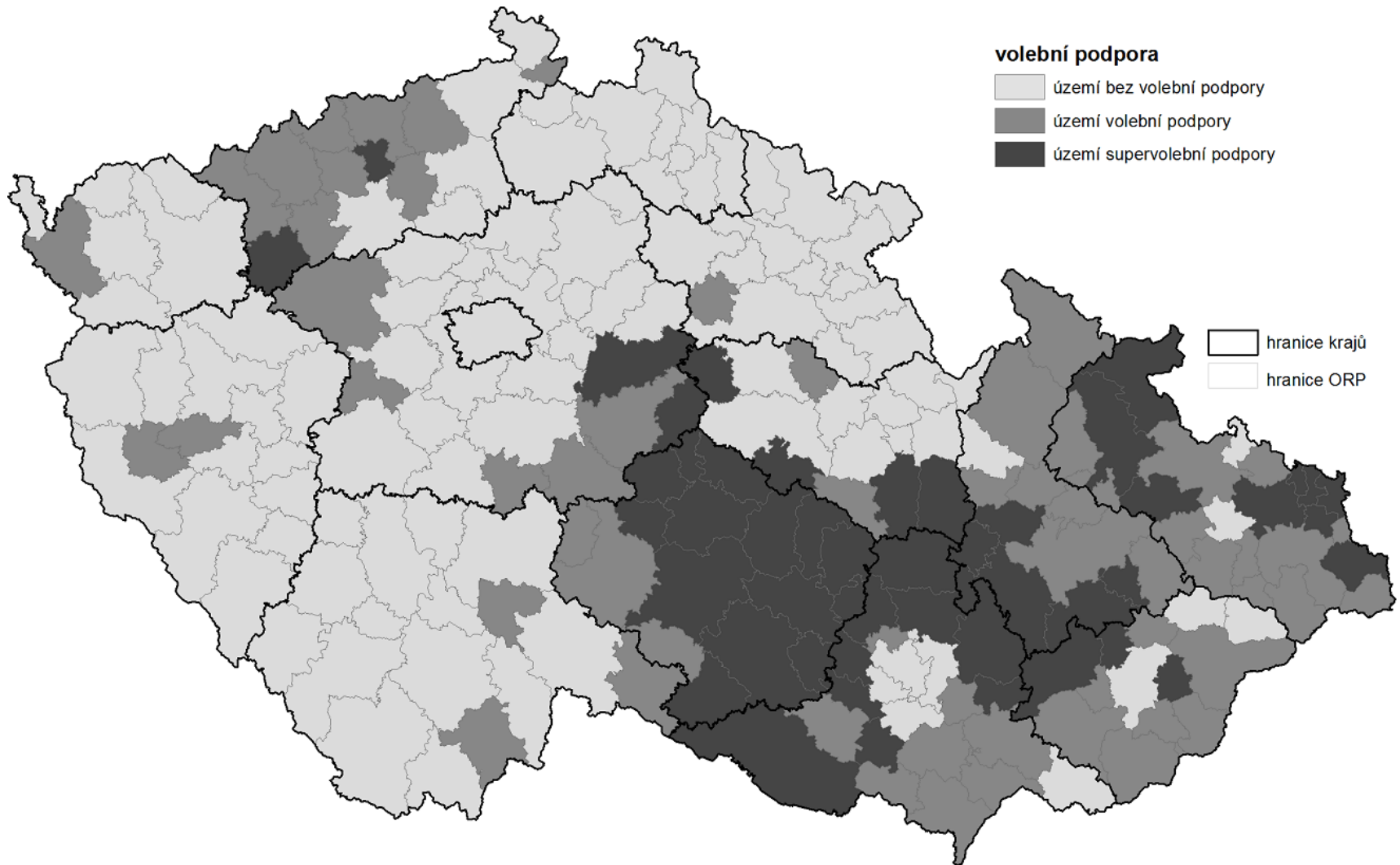
| | I. Votes | I. % | II. Votes | II. % |
|---------------------------|----------|-------|-----------|-------|
| Roithová (KDU) | 255045 | 4,95 | | |
| Fischer (Ind.) | 841437 | 16,35 | | |
| Bobošíková (Nat. Right) | 123171 | 2,39 | | |
| Fischerová (Green) | 166211 | 3,23 | | |
| Sobotka (ODS) | 126846 | 2,46 | | |
| Zeman (Left) | 1245848 | 24,21 | 2717405 | 54,80 |
| Franz (Ind.) | 351916 | 6,84 | | |
| Dienstbier (ČSSD) | 829297 | 16,12 | | |
| Schwarzenberg (Lib. con.) | 1204195 | 23,40 | 2241171 | 45,19 |



Karel Schwarzenberg I. 2013



Miloš Zeman I. 2013

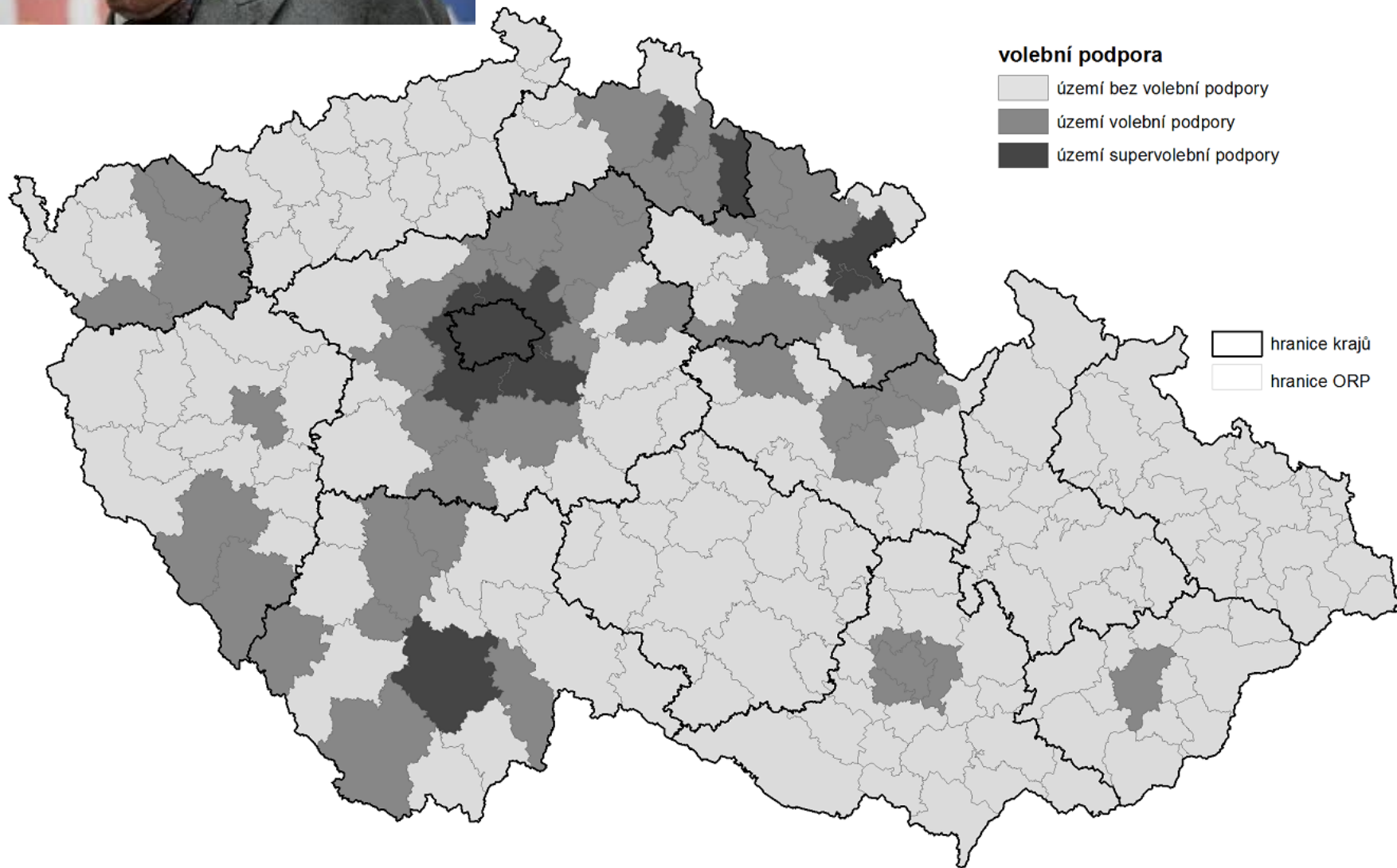


Vzájemné souvislosti 2013

| | ČSSD+KSČM | TOP09+ODS |
|---------------|-----------|-----------|
| Roithova | -0,14 | -0,19 |
| Fischer | 0,40 | -0,39 |
| Bobošíková | 0,45 | -0,50 |
| Fischerova | -0,53 | 0,41 |
| Sobotka | -0,55 | 0,63 |
| Zeman | 0,66 | -0,70 |
| Franz | -0,02 | 0,10 |
| Dienstbier | 0,76 | -0,62 |
| Schwarzenberg | -0,84 | 0,93 |

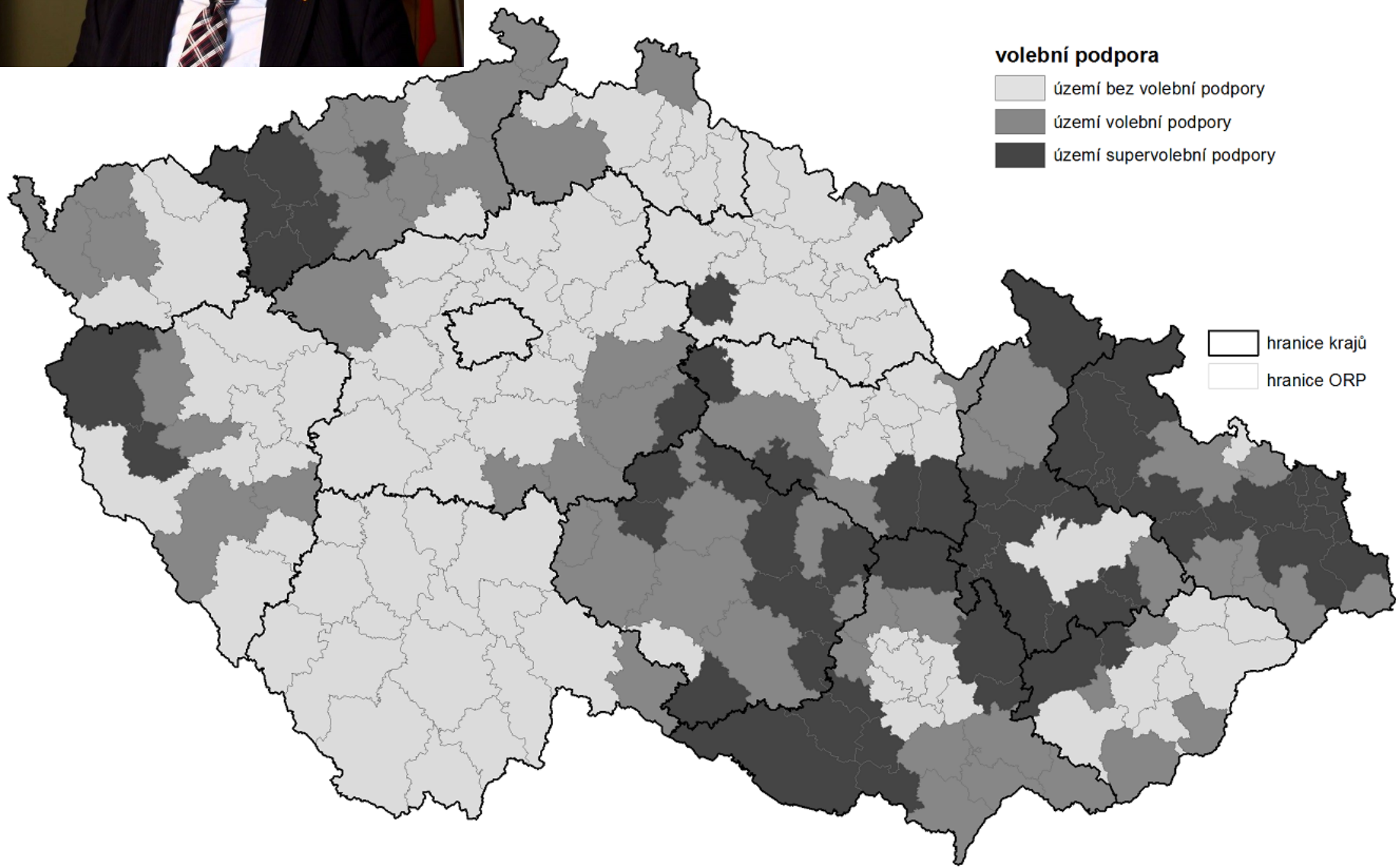


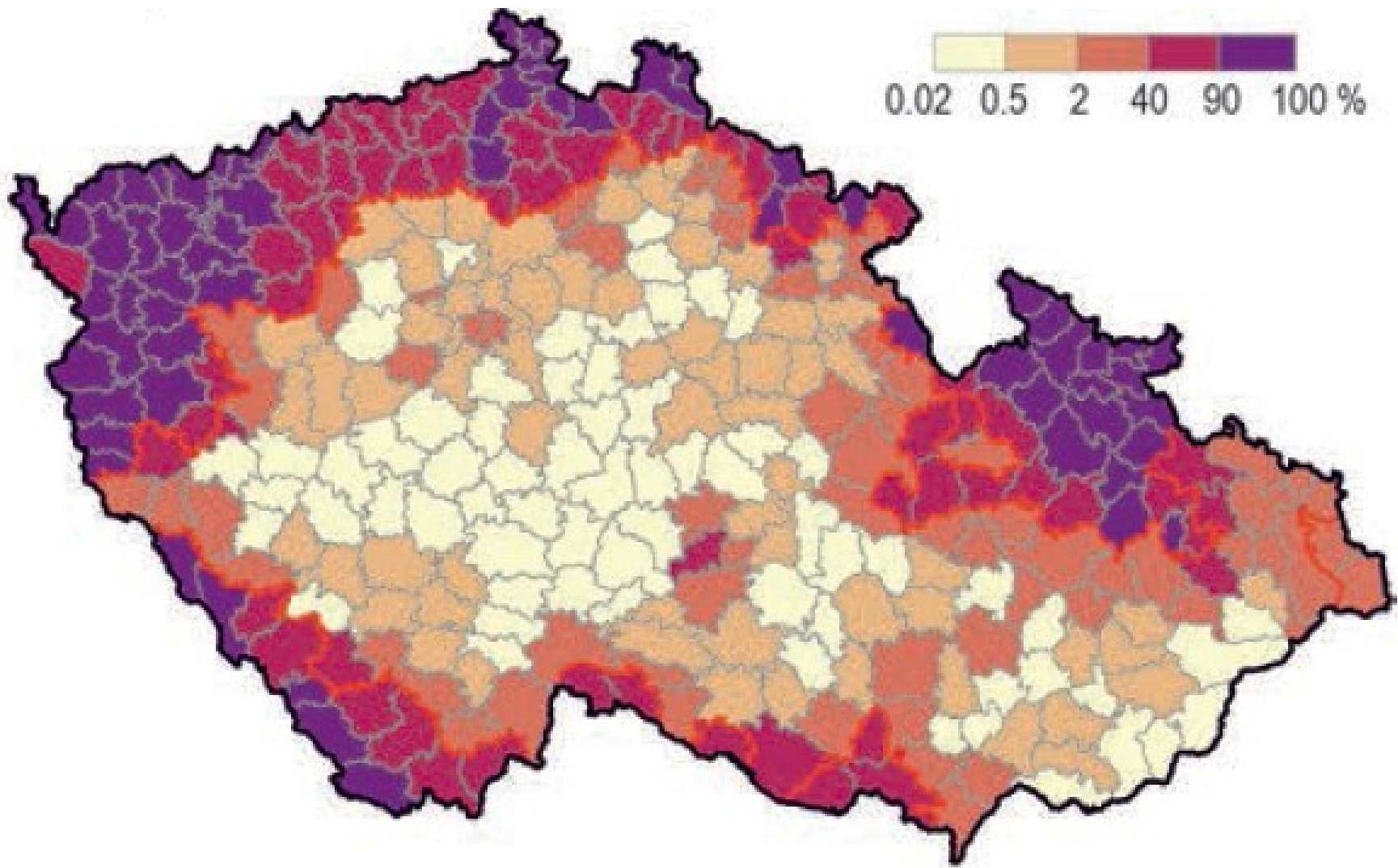
II. Kolo

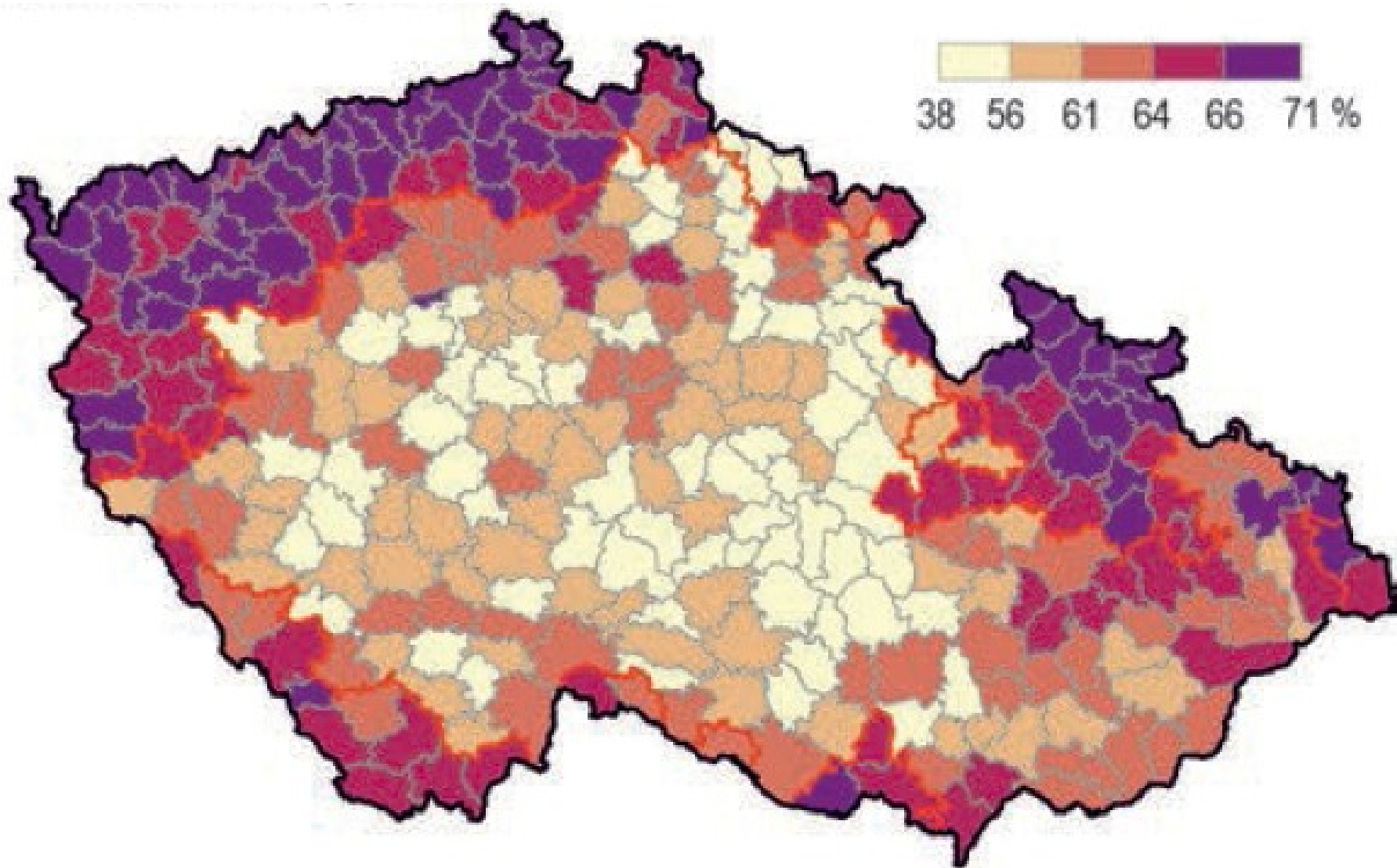




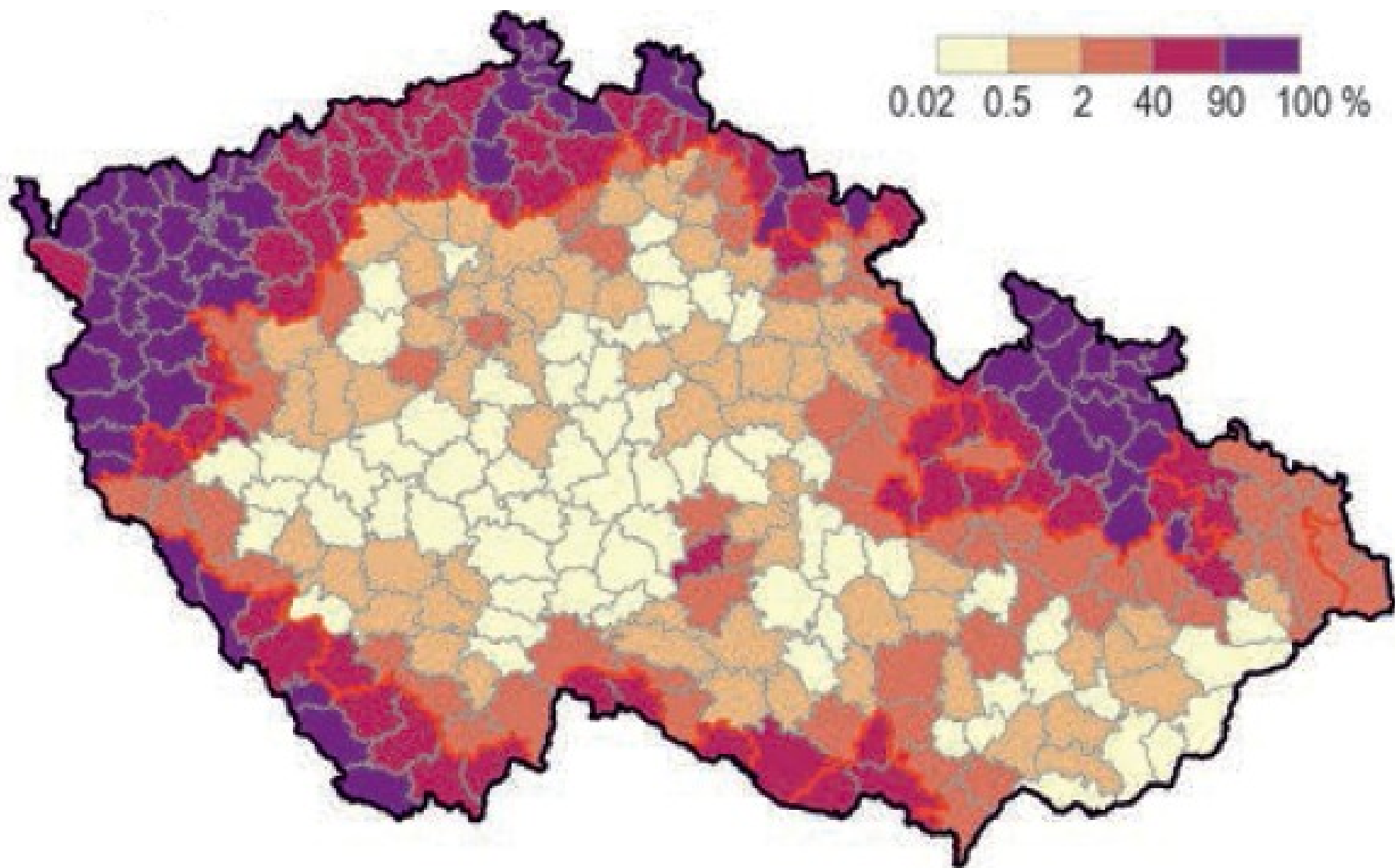
II. Kolo



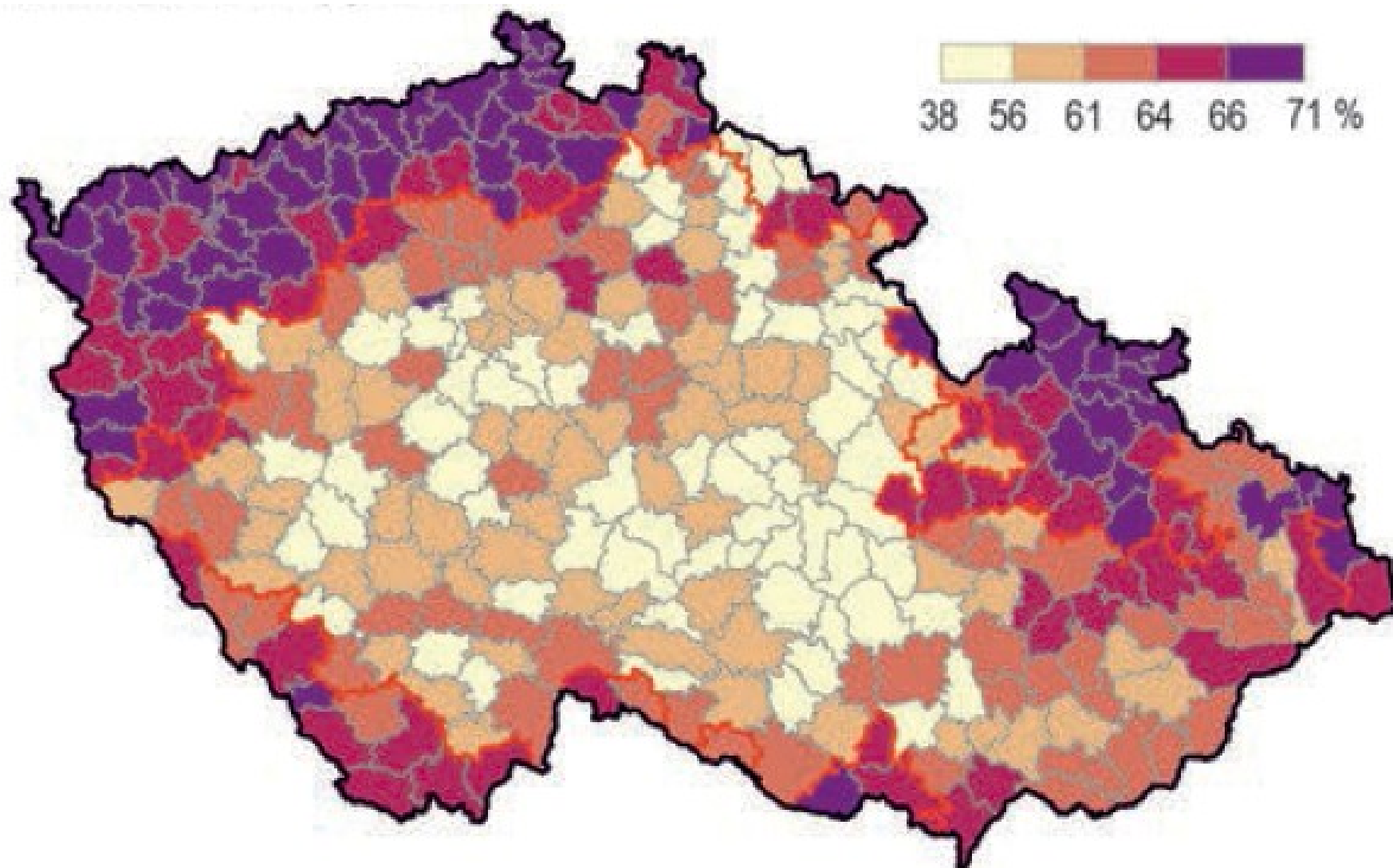




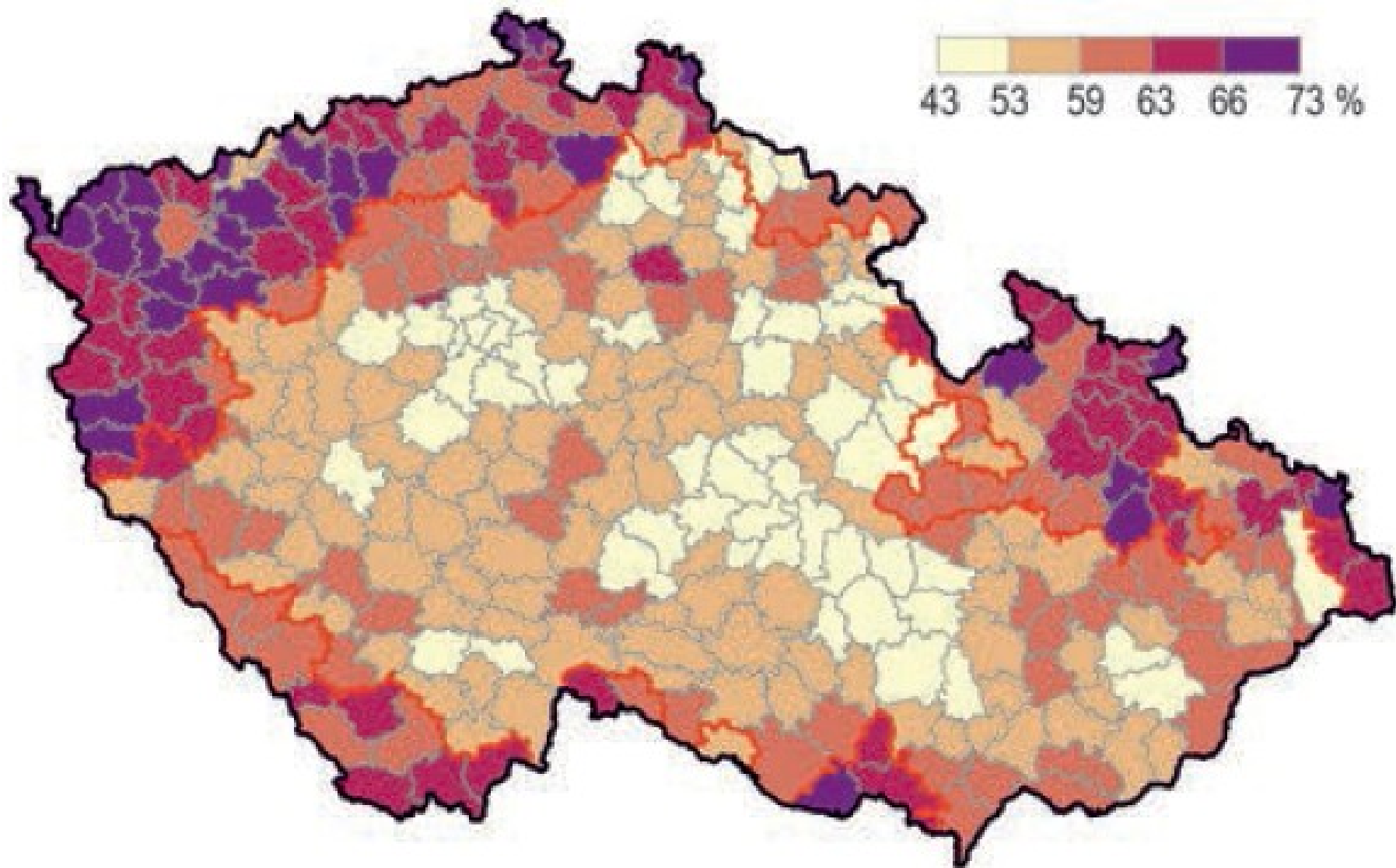
Německy hovořící obyvatelstvo 1930



Volební abstence 2013



Volební abstence 2010



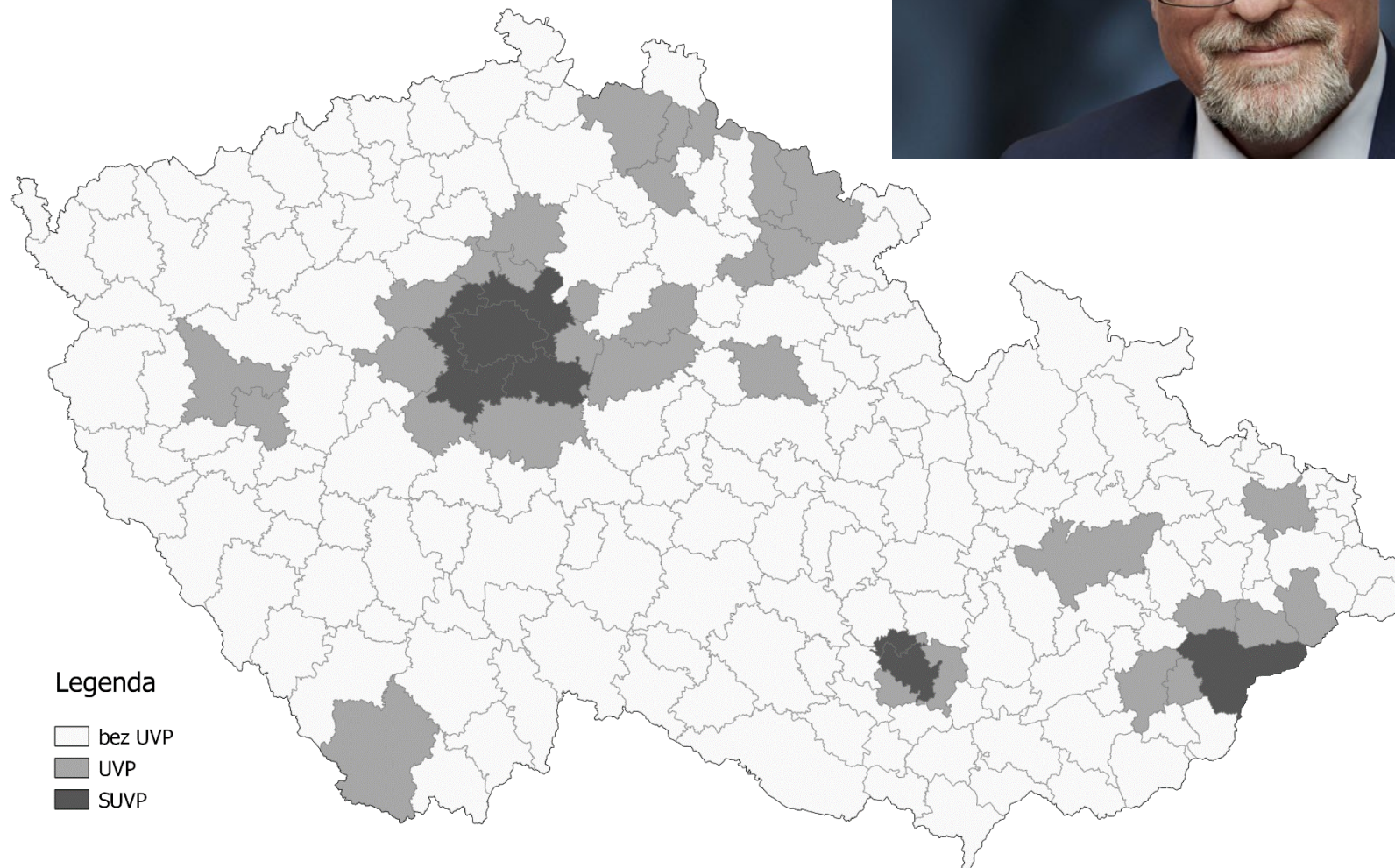
Prezidentské volby 2018

| | I. Votes | I. % | II. Votes | II. % |
|------------------------|----------|-------|-----------|-------|
| Topolánek (Ind.) | 221689 | 4,30 | | |
| Horáček (Ind.) | 472643 | 9,18 | | |
| Fischer (Ind. – opos.) | 526694 | 10,23 | | |
| Hynek (Ind.) | 63348 | 1,23 | | |
| Hannig (Ind.) | 29228 | 0,56 | | |
| Kulhánek (Ind.) | 24442 | 0,47 | | |
| Zeman (Pres.) | 1985547 | 38,56 | 2853390 | 51,36 |
| Hilšer (Ind.) | 454949 | 8,83 | | |
| Drahoš (Ind. – opos.) | 1369601 | 26,60 | 2701206 | 48,63 |

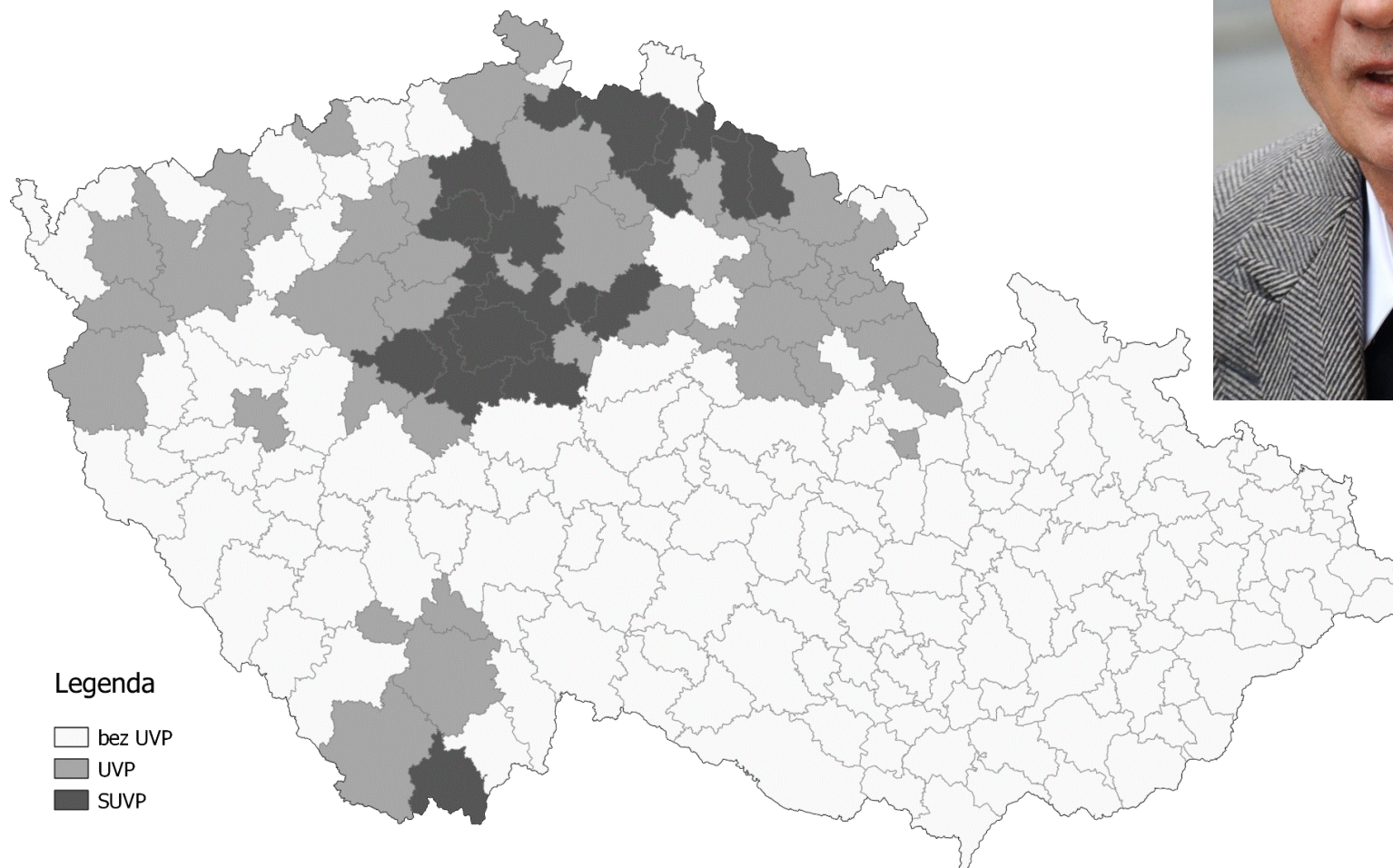
Vzájemné souvislosti 2018 I.

| | Topolánek | Horáček | Fischer | Zeman I. | Hilšer | Drahoš I. |
|-------------|---------------|---------------|---------------|---------------|---------------|---------------|
| ANO | -0,397 | -0,082 | -0,698 | 0,707 | -0,265 | -0,496 |
| ODS | 0,705 | 0,540 | 0,287 | -0,777 | 0,468 | 0,507 |
| Pirati | 0,567 | 0,516 | 0,223 | -0,772 | 0,541 | 0,576 |
| Okamura | -0,336 | -0,299 | -0,340 | 0,691 | -0,470 | -0,549 |
| KSČM | -0,504 | -0,199 | -0,455 | 0,717 | -0,256 | -0,616 |
| ČSSD | -0,439 | -0,554 | -0,012 | 0,386 | -0,425 | -0,090 |
| KDU- ČSL | -0,268 | -0,570 | 0,745 | -0,091 | -0,310 | 0,131 |
| TOP09 | 0,609 | 0,498 | 0,253 | -0,711 | 0,418 | 0,487 |
| STAN | 0,326 | 0,323 | 0,047 | -0,436 | 0,443 | 0,301 |

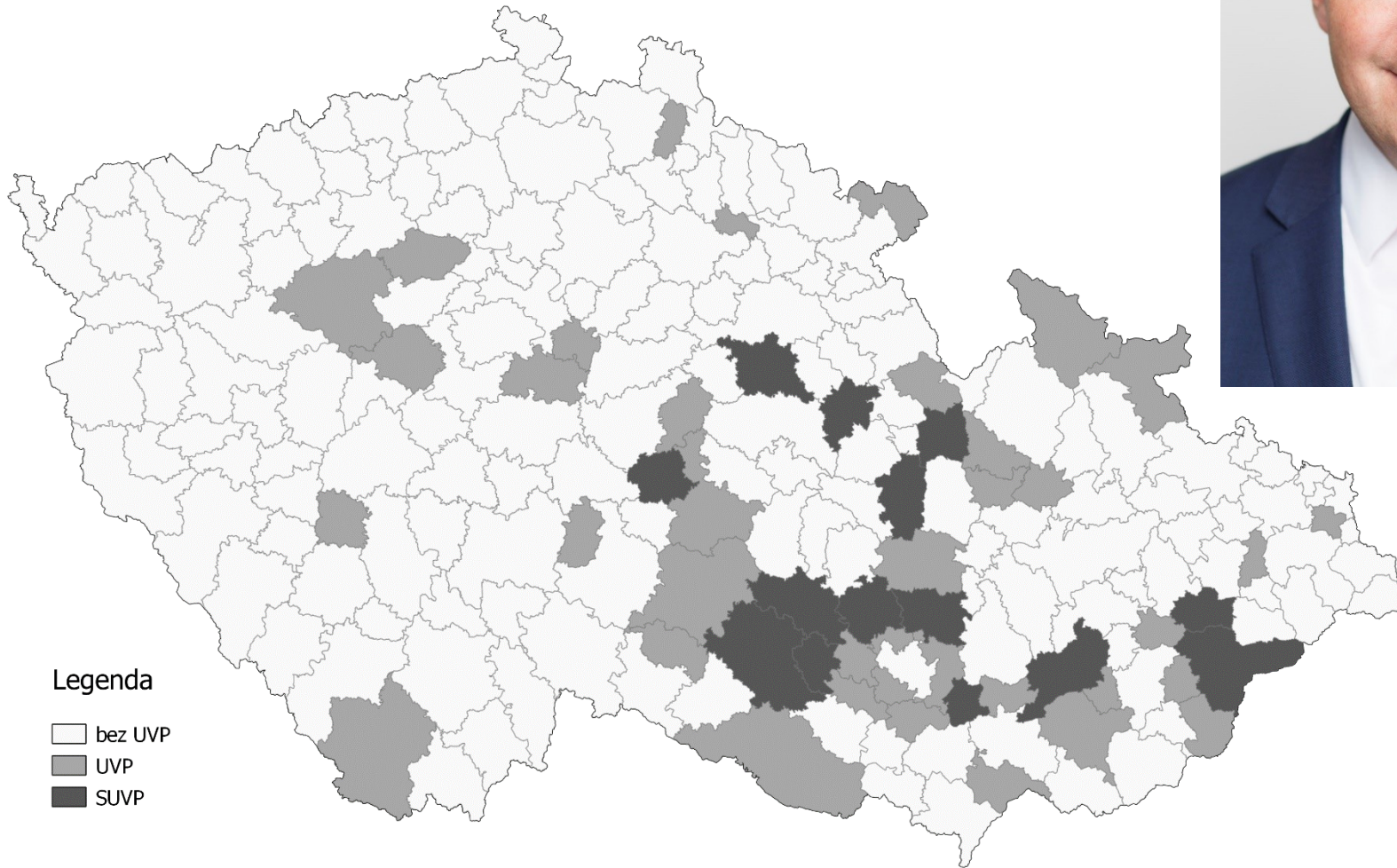
Mirek Topolánek 4,30 %



Michal Horáček 9,18 %

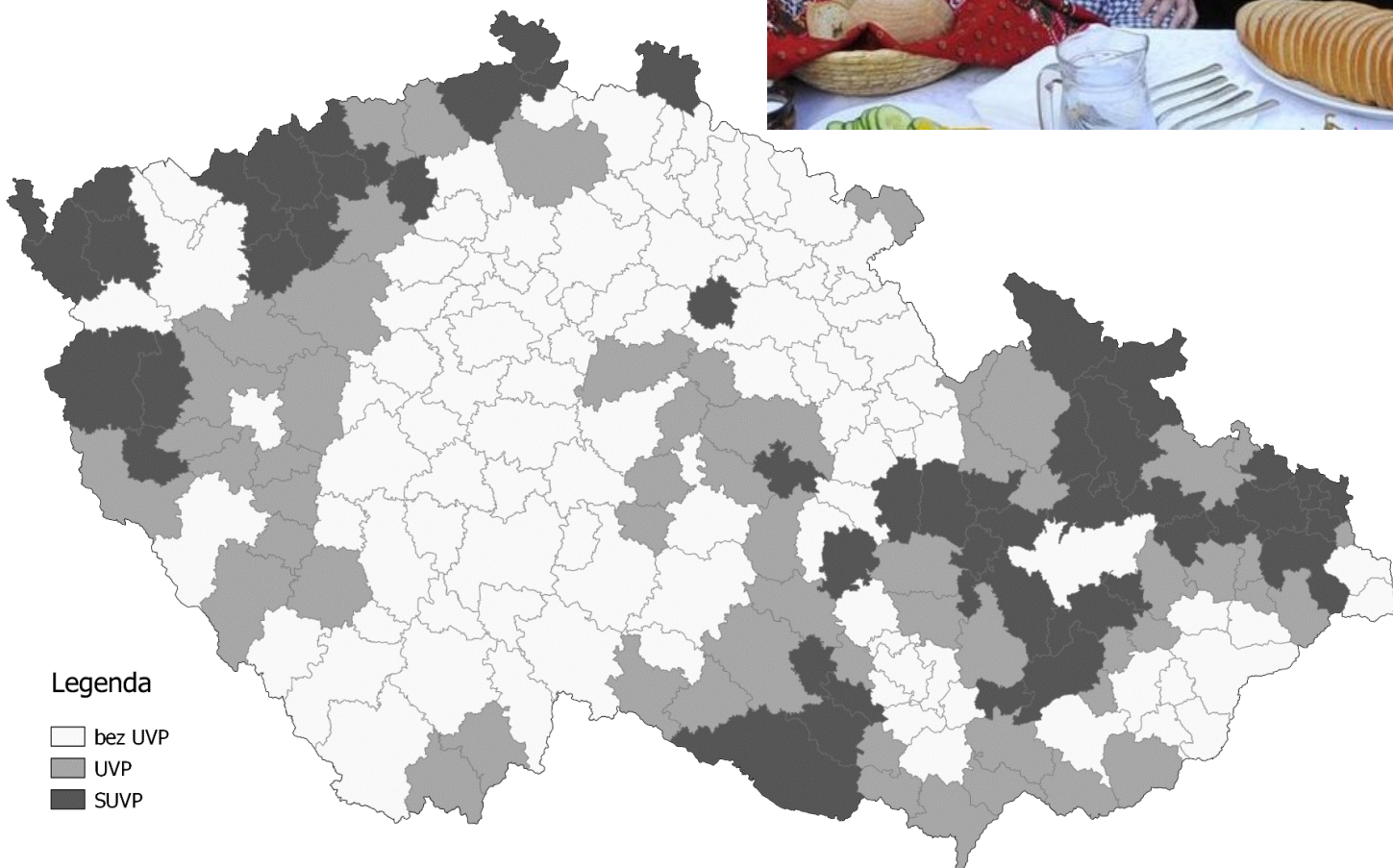


Pavel Fischer 10,23%



Miloš Zeman I.

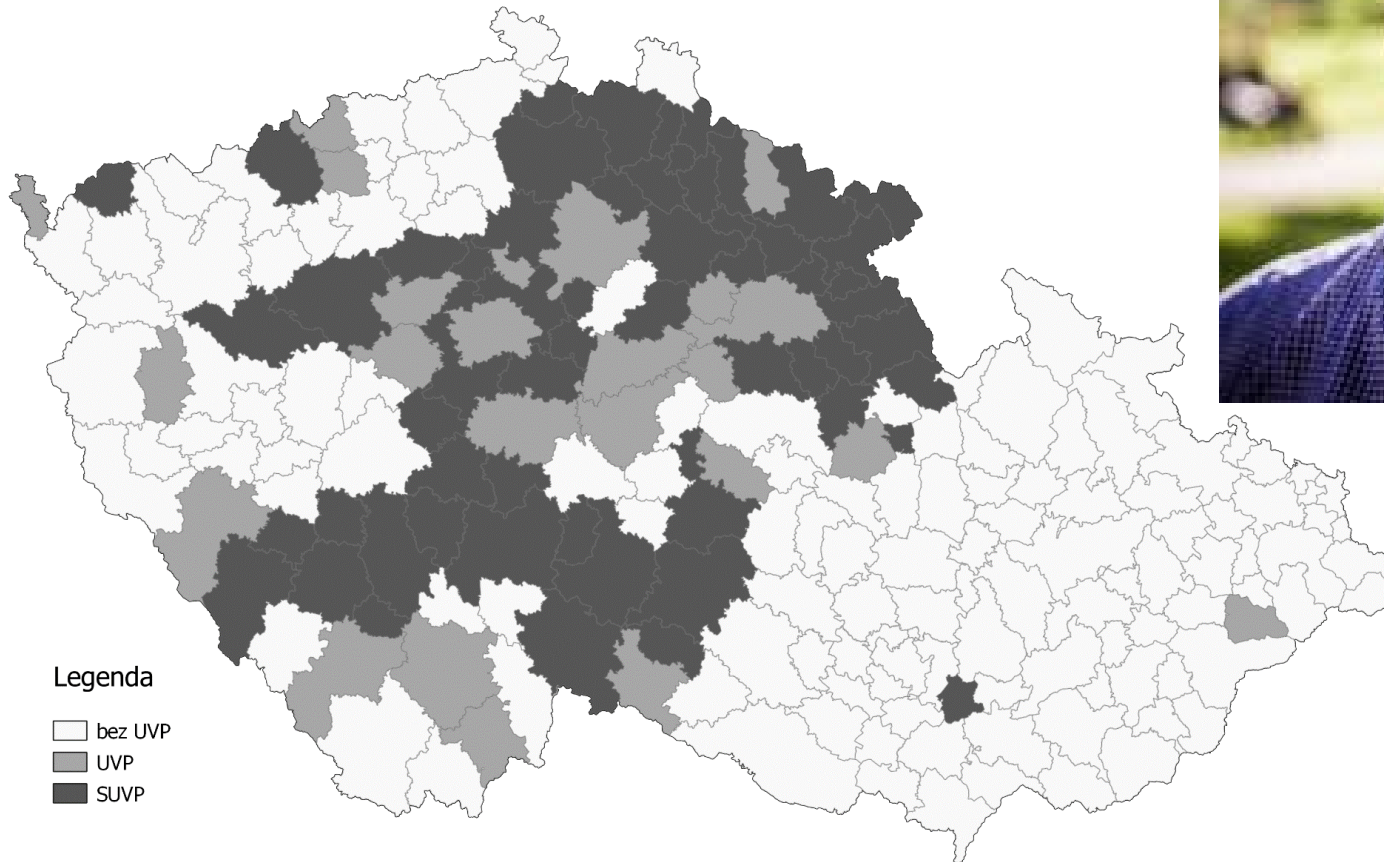
38,56%



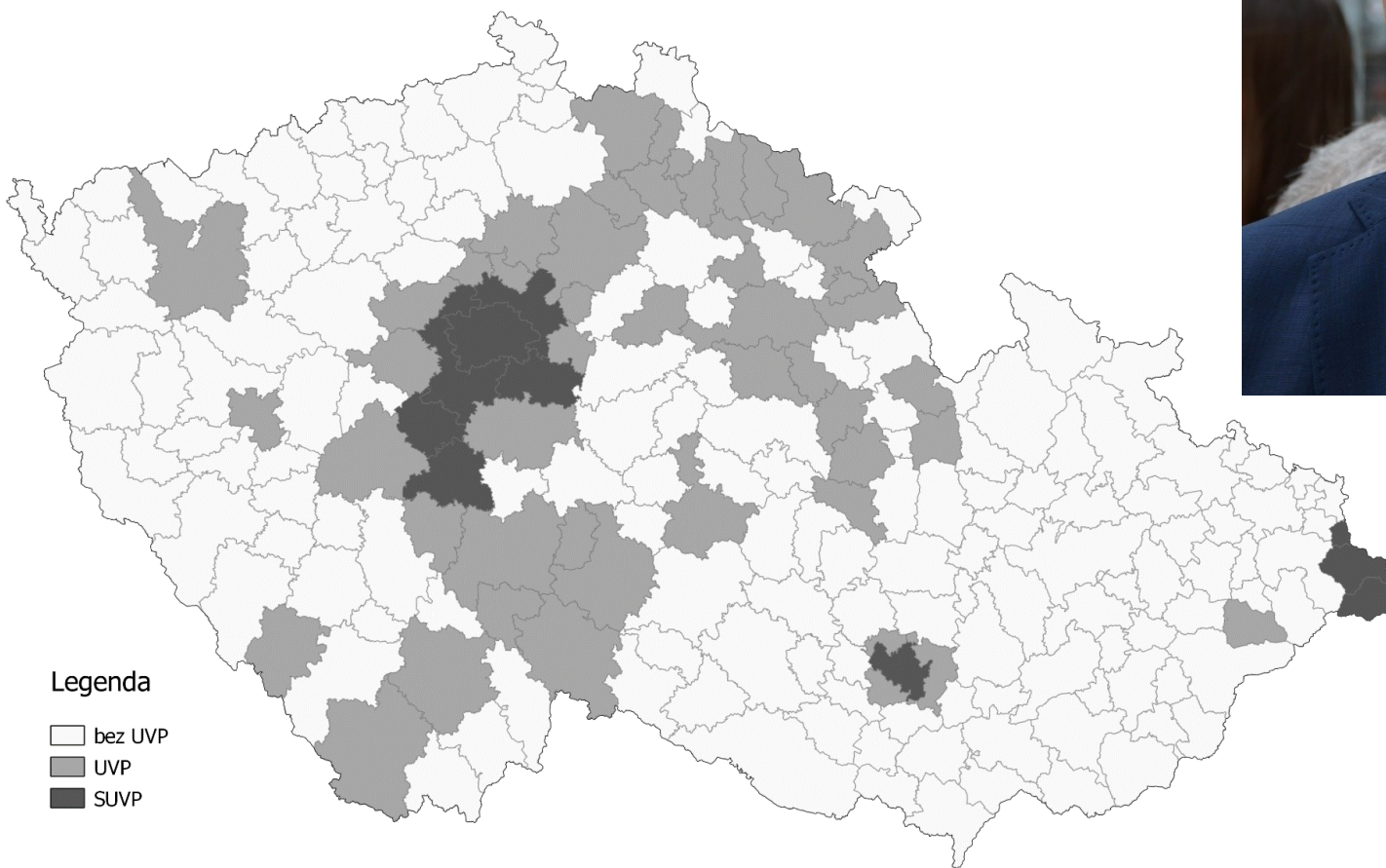
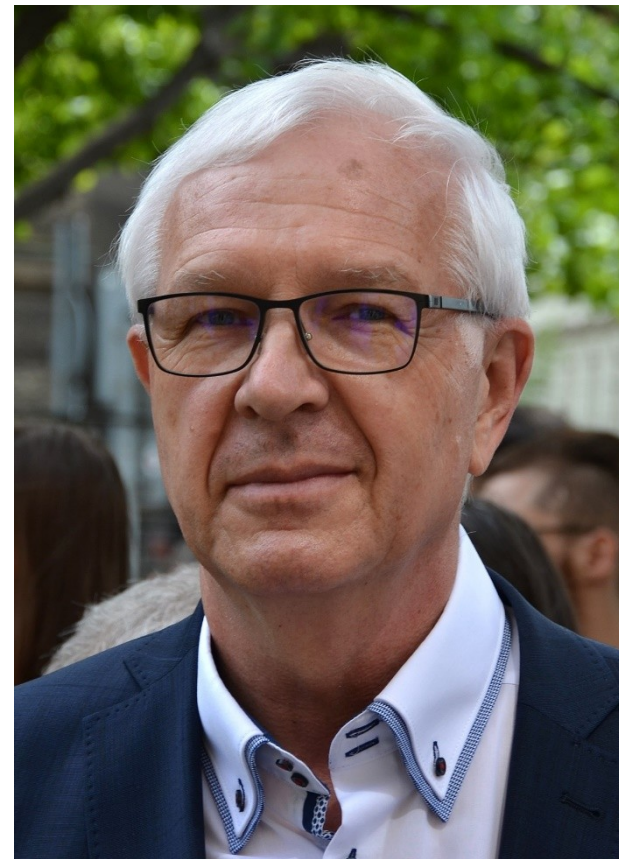
Legenda

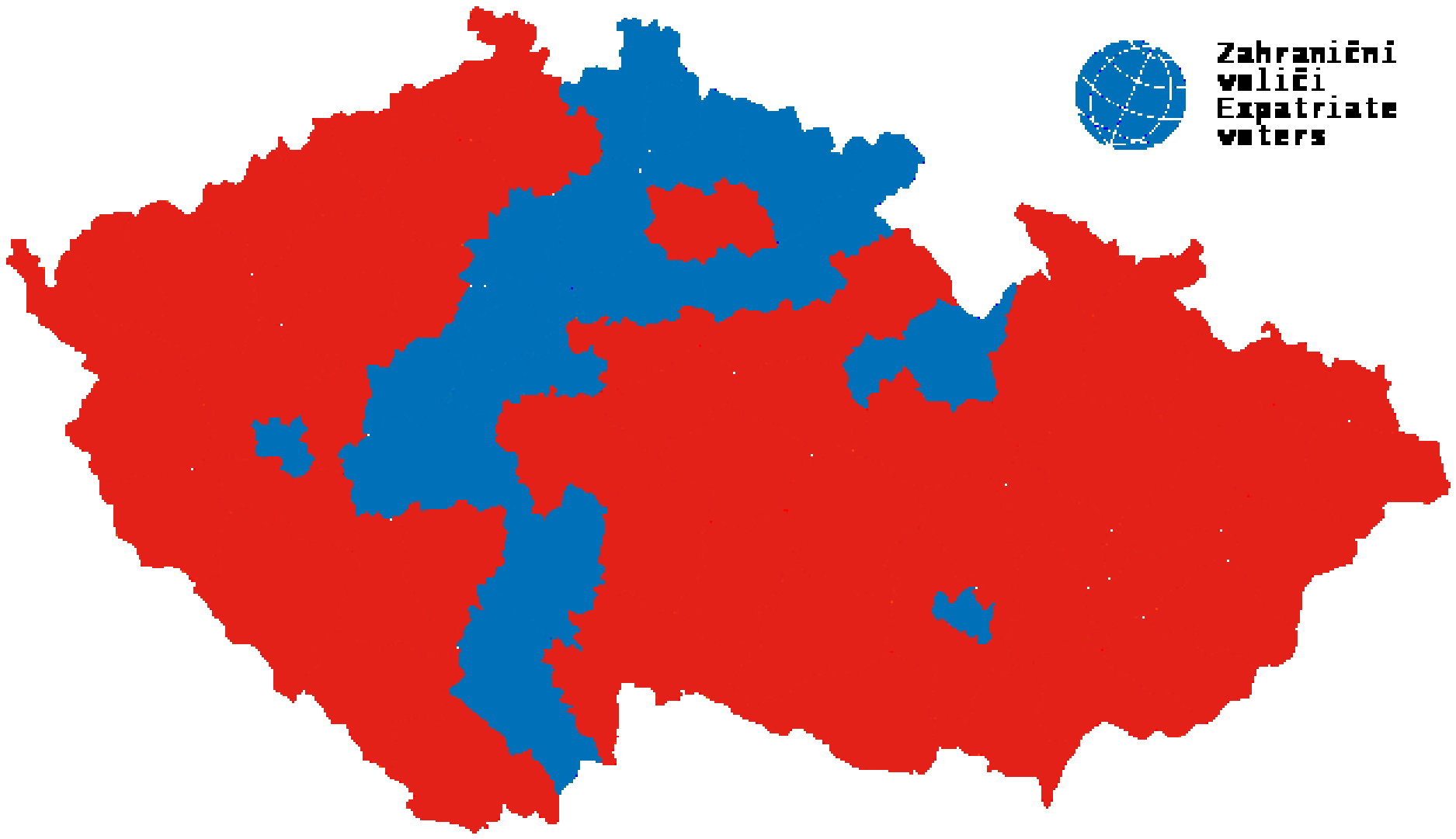
- bez UVP
- UVP
- SUVP

Marek Hilšer 8,83%



Jiří Drahoš I. 26,60%





Zahraniční
voliči
Expatriate
voters

Vzájemná asociace I. a II. Kolo

| | Zeman II. | Drahoš II. |
|---------------------|--------------|---------------|
| Topolánek | -0,624 | 0,624 |
| Horáček | -0,439 | 0,446 |
| Fischer | -0,501 | 0,191 |
| Zeman I. | 0,989 | -0,623 |
| Hilšer | -0,500 | 0,377 |
| Drahoš I. | -0,797 | 0,334 |
| Participiaption I. | -0,664 | 0,289 |
| Participiaption II. | -0,614 | 0,253 |

I. a II. Kolo

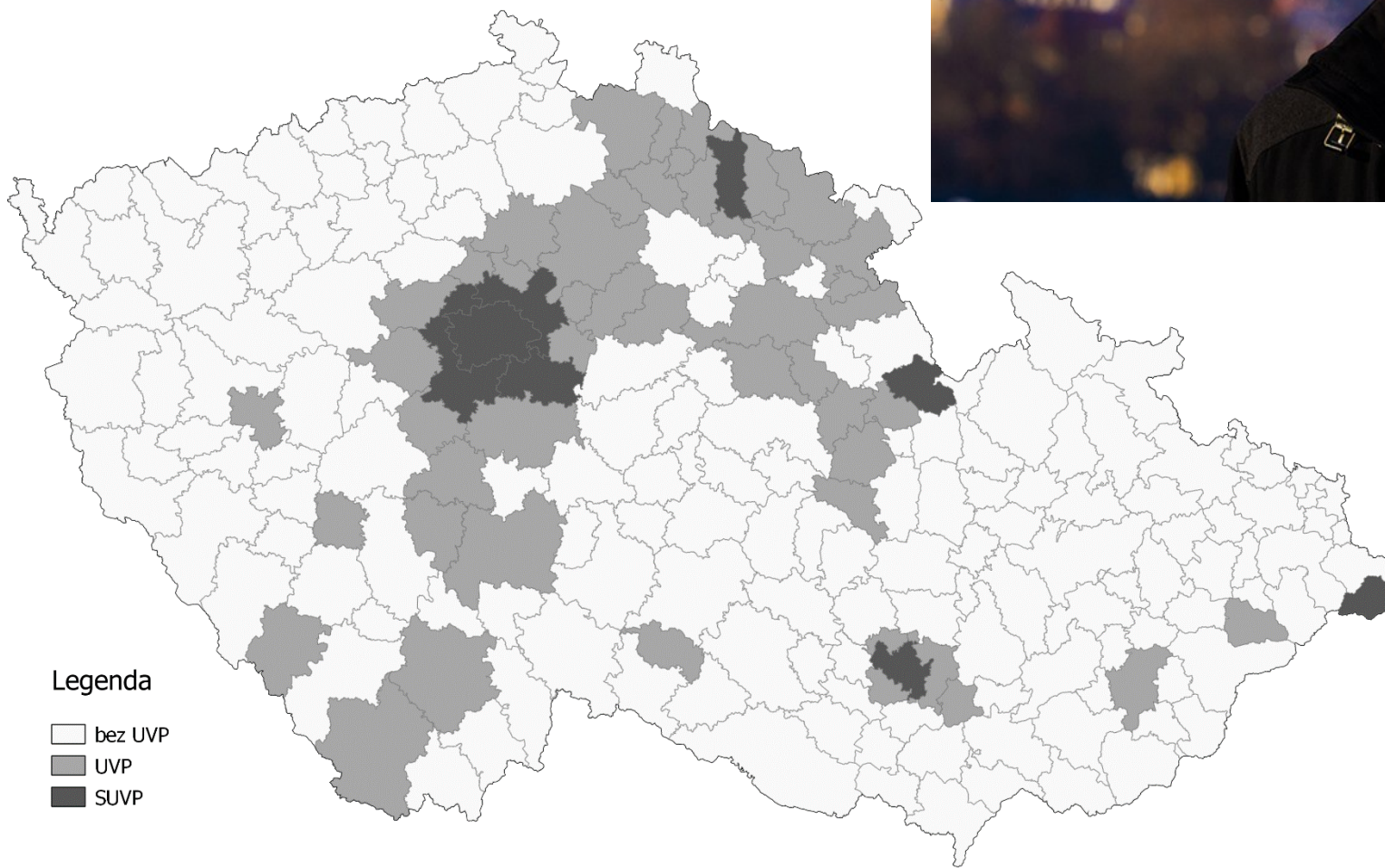
Nárůst hlasů I. a II. Kolo a podpora 2017 - Miloš Zeman

| ANO | Piráti | ODS | Okamura | KSČM | ČSSD | KDU | TOP09 | STAN |
|--------------|---------------|---------------|--------------|--------------|--------------|---------------|---------------|---------------|
| 0,375 | -0,427 | -0,366 | 0,221 | 0,374 | 0,145 | -0,061 | -0,381 | -0,141 |

Nárůst hlasů I. a II. Kolo a podpora 2017 – Jiří Drahoš

| ANO | Piráti | ODS | Okamura | KSČM | ČSSD | KDU | TOP09 | STAN |
|---------------|--------------|--------------|---------------|---------------|---------------|--------------|--------------|--------------|
| -0,683 | 0,722 | 0,768 | -0,580 | -0,599 | -0,502 | 0,037 | 0,696 | 0,403 |

Jiří Drahoš II. 48,63%

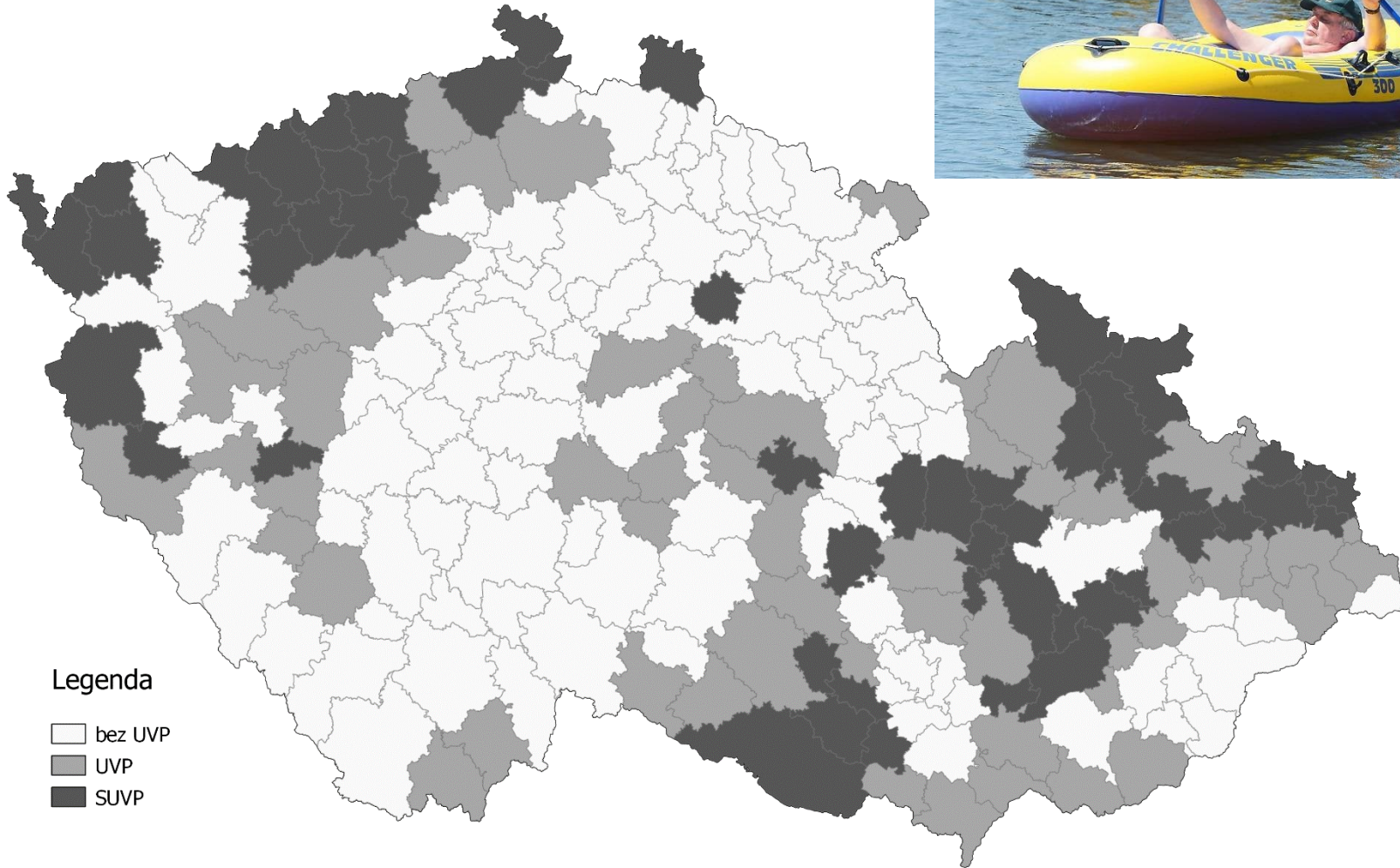


Legenda

- bez UVP
- UVP
- SUVP

Miloš Zeman II.

51,36%



2023

| | Hlasy I. | % I. | Hlasy II. | % II. |
|------------------------|------------------|--------------|------------------|--------------|
| Pavel Fischer | 376 705 | 6,75 | | |
| Jaroslav Bašta | 248375 | 4,45 | | |
| Petr Pavel | 1 975 056 | 35,40 | 3 359 151 | 58,32 |
| Tomáš Zima | 30 769 | 0,55 | | |
| Danuše Nerudová | 777 080 | 13,92 | | |
| Andrej Babiš | 1 952 213 | 34,99 | 2400046 | 41,67 |
| Karel Diviš | 75 475 | 1,35 | | |
| Marek Hilšer | 142 912 | 2,56 | | |

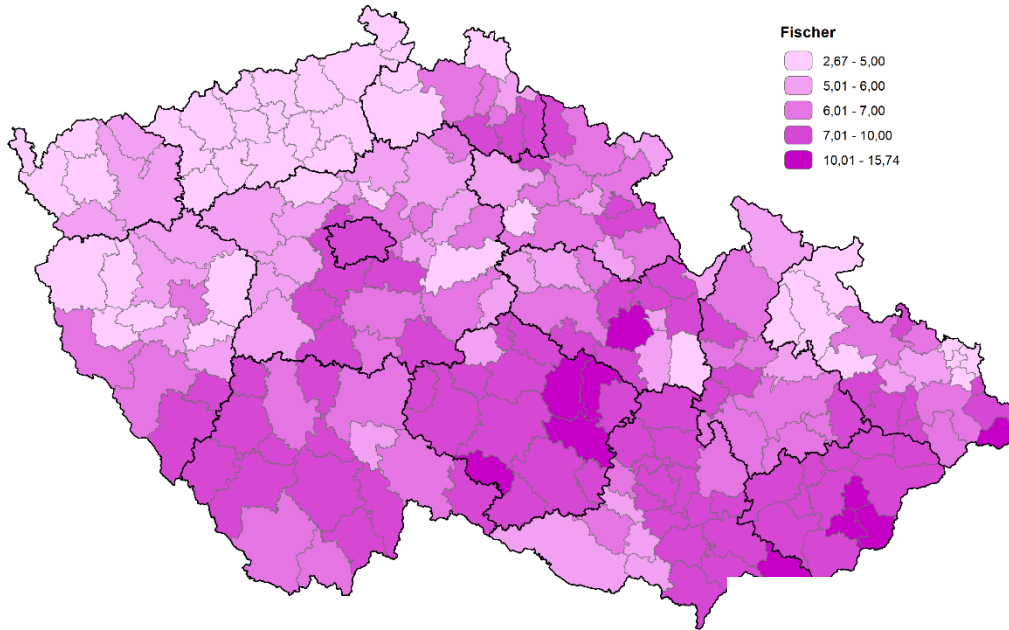
Vzájemné souvislosti 2023

| | Kvalita | Fischer | Bašta | Pavel 1 | Nerud. | Babiš 1 | Účast |
|---------|---------|--------------|---------------|--------------|--------------|---------------|--------------|
| Kvalita | 1 | 0,416 | -0,356 | 0,649 | 0,637 | -0,751 | 0,722 |
| Fischer | 0,416 | 1 | -0,070 | 0,136 | 0,664 | -0,589 | 0,613 |
| Bašta | -0,356 | -0,070 | 1 | -0,522 | -0,232 | 0,351 | -0,043 |
| Pavel 1 | 0,649 | 0,136 | -0,522 | 1 | 0,382 | -0,844 | 0,514 |
| Nerud. | 0,937 | 0,664 | -0,232 | 0,382 | 1 | -0,752 | 0,781 |
| Babiš 1 | -0,751 | 0,586 | 0,351 | -0,844 | -0,752 | 1 | -0,758 |
| Účast | 0,722 | 0,613 | -0,404 | 0,514 | 0,781 | -0,758 | 1 |

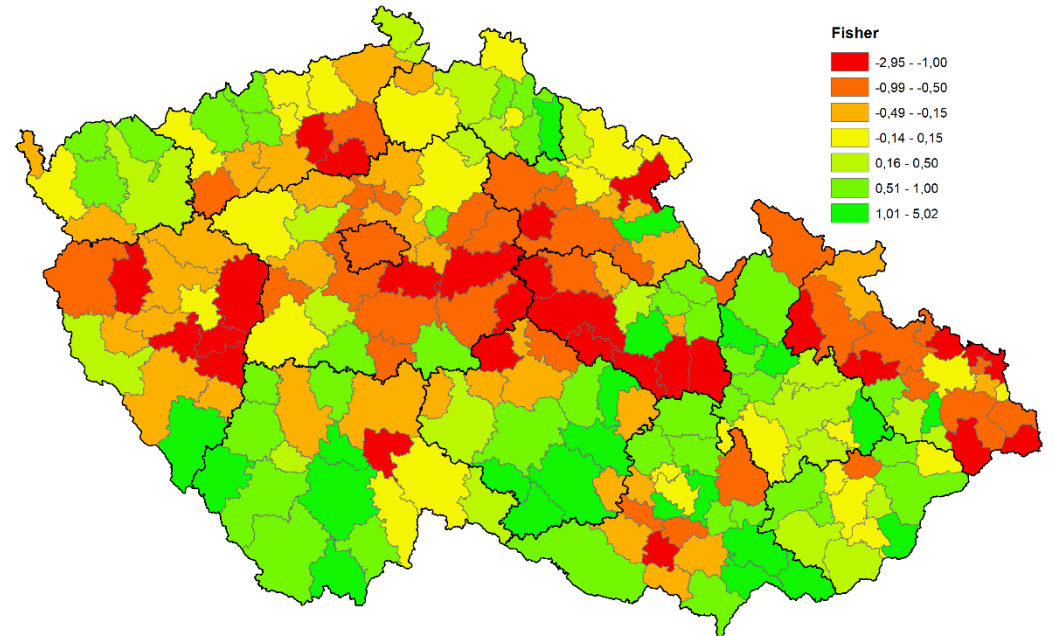
Vzájemné souvislosti 2021/2023

| | Fischer | Bašta | Pavel 1 | Nerud. | Babiš 1 | Účast 1 |
|----------|---------|--------|---------|--------|---------|---------|
| ANO | -0,312 | 0,253 | -0,751 | -0,785 | 0,954 | -0,739 |
| SPOLU | 0,651 | -0,379 | 0,701 | 0,735 | -0,885 | 0,740 |
| PiroStan | 0,113 | -0,429 | 0,765 | 0,325 | -0,676 | 0,400 |
| SPD | -0,394 | 0,724 | -0,709 | -0,645 | 0,755 | -0,757 |
| KSČM | -0,259 | 0,153 | -0,533 | -0,205 | 0,518 | -0,178 |
| ČSSD | 0,329 | -0,142 | -0,170 | 0,289 | -0,048 | 0,299 |

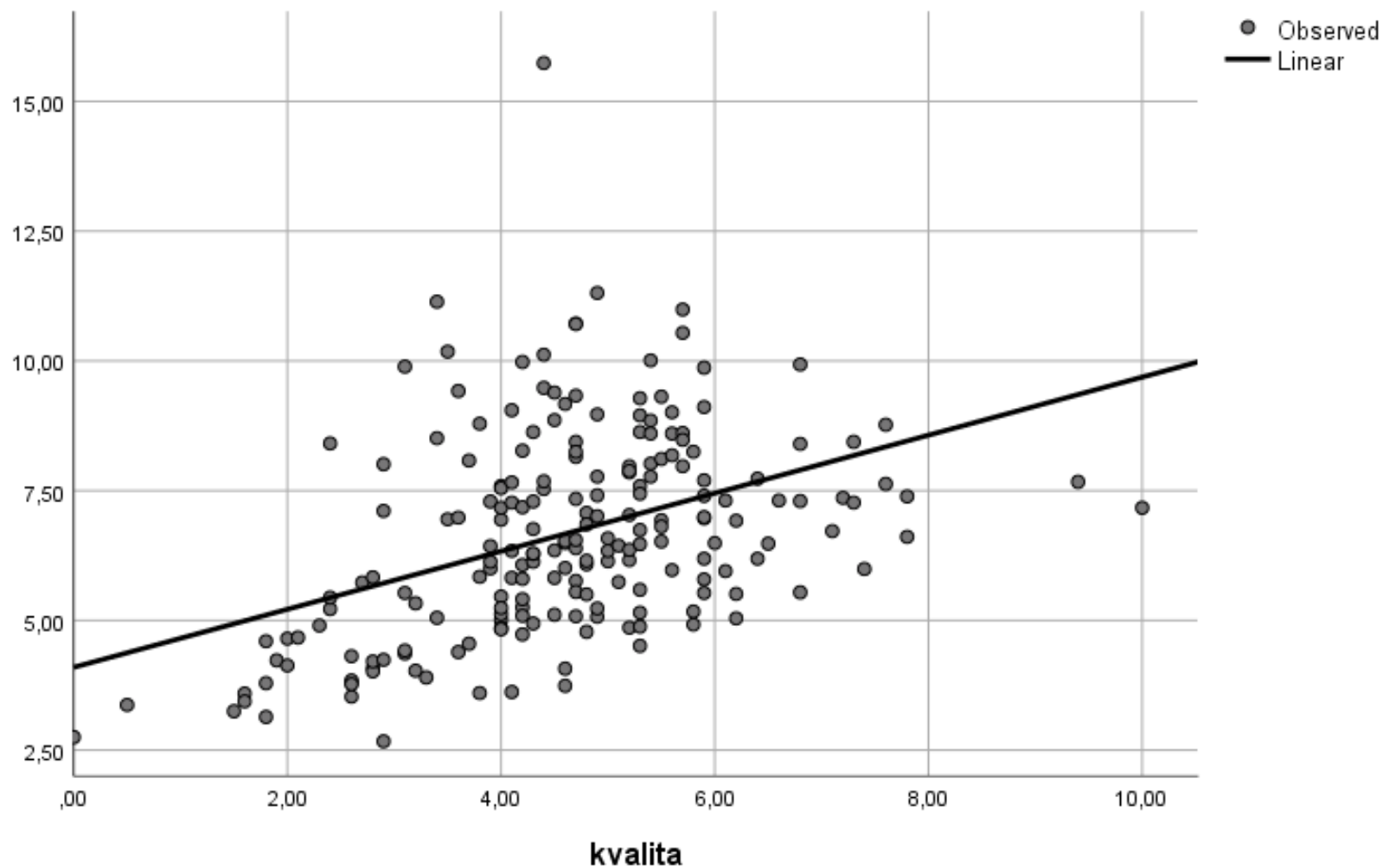
Pavel Fischer 2023



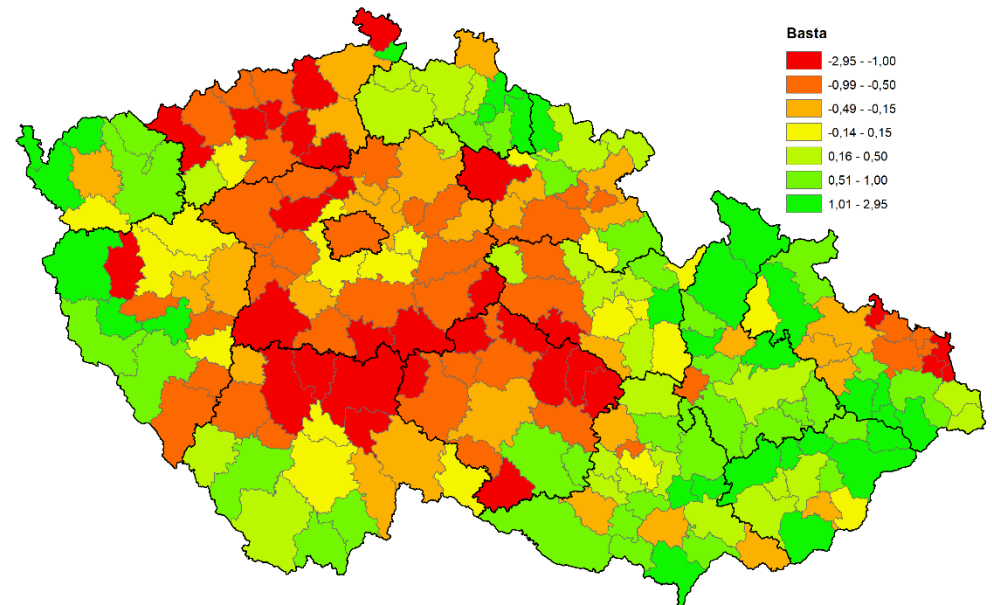
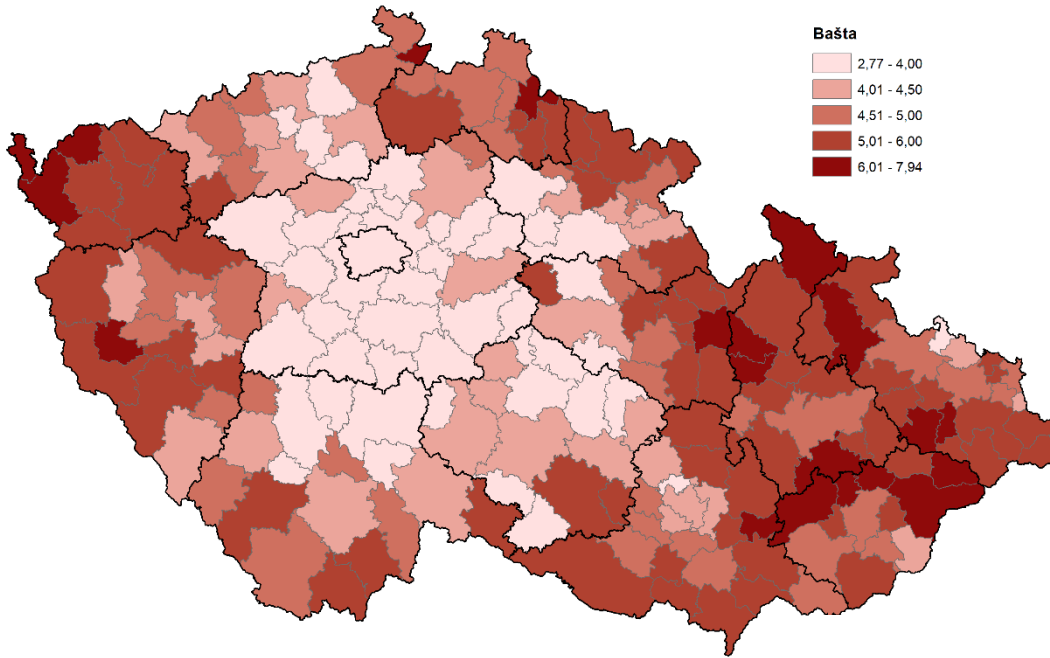
| | |
|-----------------------------|--------------|
| Velké Meziříčí | 10,71 |
| Telč | 10,72 |
| Litomyšl | 10,99 |
| Veselí nad Moravou | 11,14 |
| Nové Město na Moravě | 11,31 |
| Valašské Klobouky | 15,74 |



Pavel Fischer a kvalita života

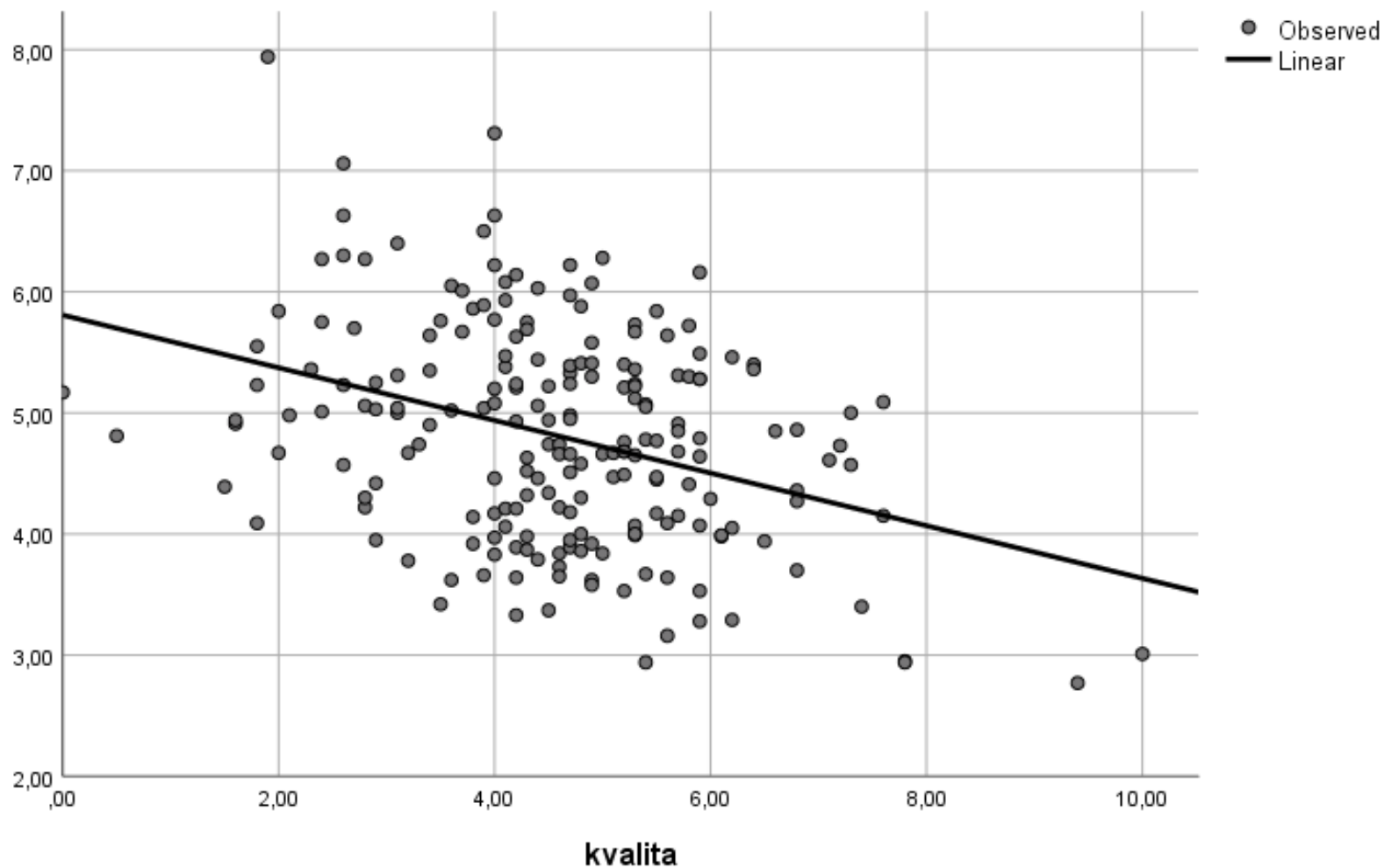


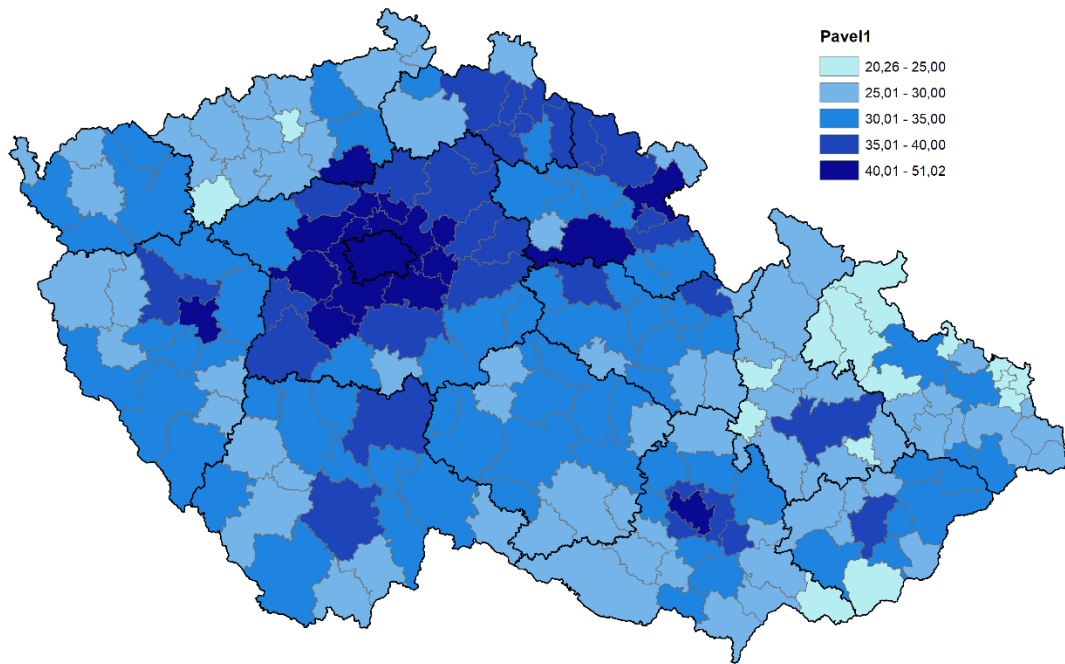
Jaroslav Bašta



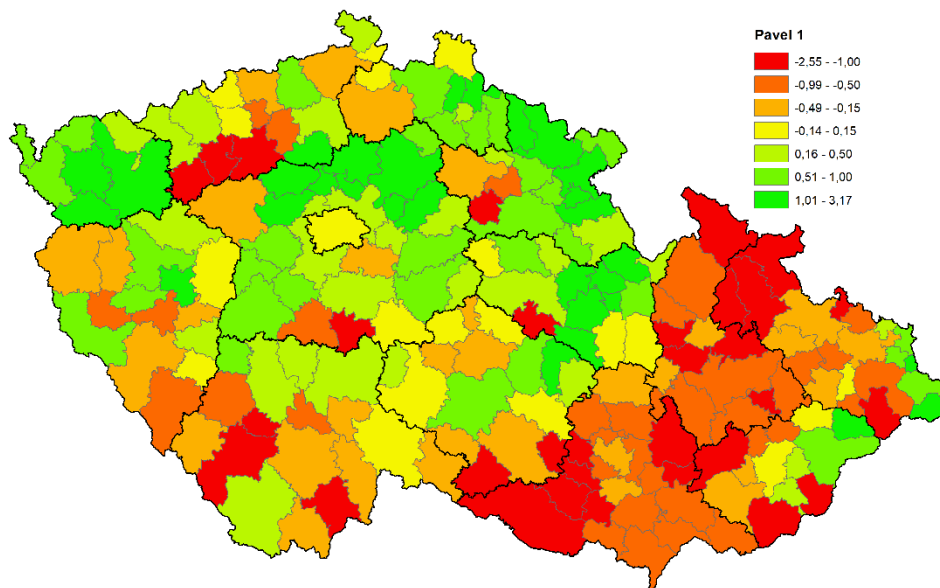
| | |
|------------------------------|-------------|
| Bystřice pod Hostýnem | 6,50 |
| Aš | 6,63 |
| Kroměříž | 6,63 |
| Bruntál | 7,06 |
| Jeseník | 7,31 |
| Kraslice | 7,94 |

Jaroslav Bašta a kvalita života

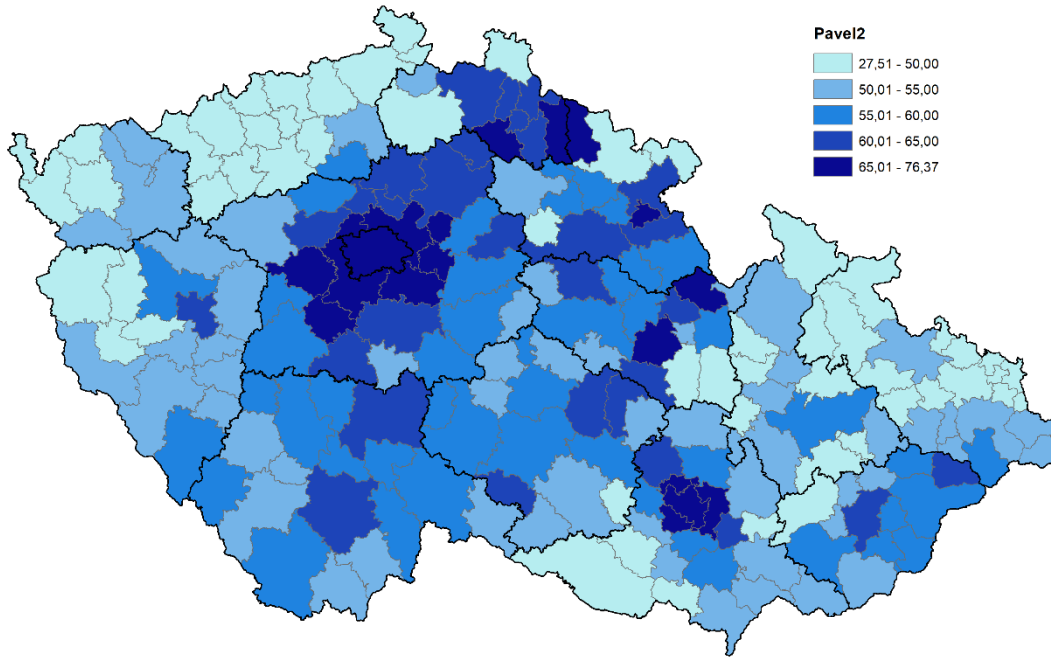




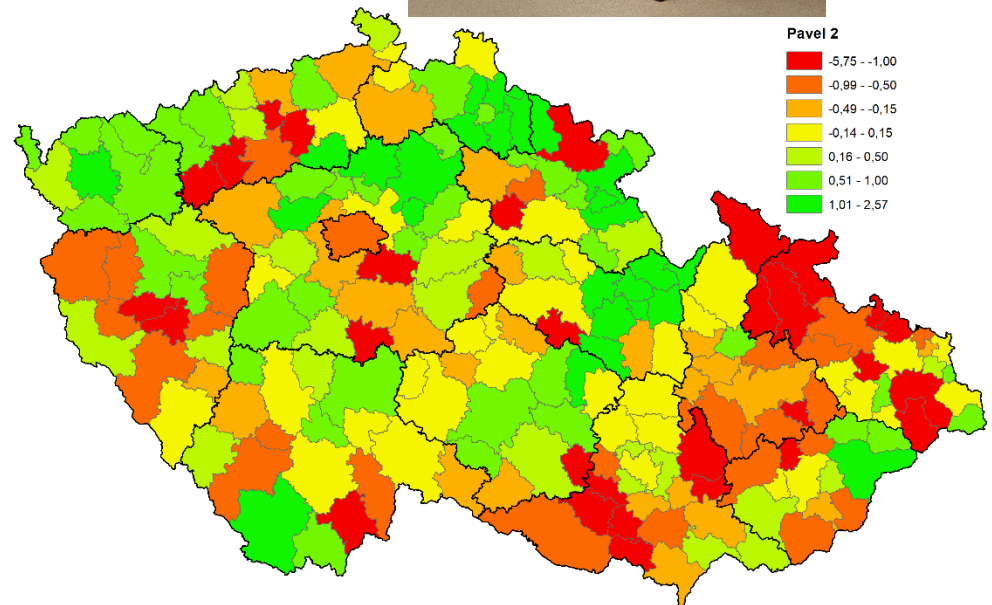
| | |
|------------------------------------|--------------|
| Brno | 42,57 |
| Beroun | 43,21 |
| Brandýs nad L. St. Boleslav | 48,52 |
| Říčany | 48,57 |
| Černošice | 51,01 |
| Praha | 51,02 |



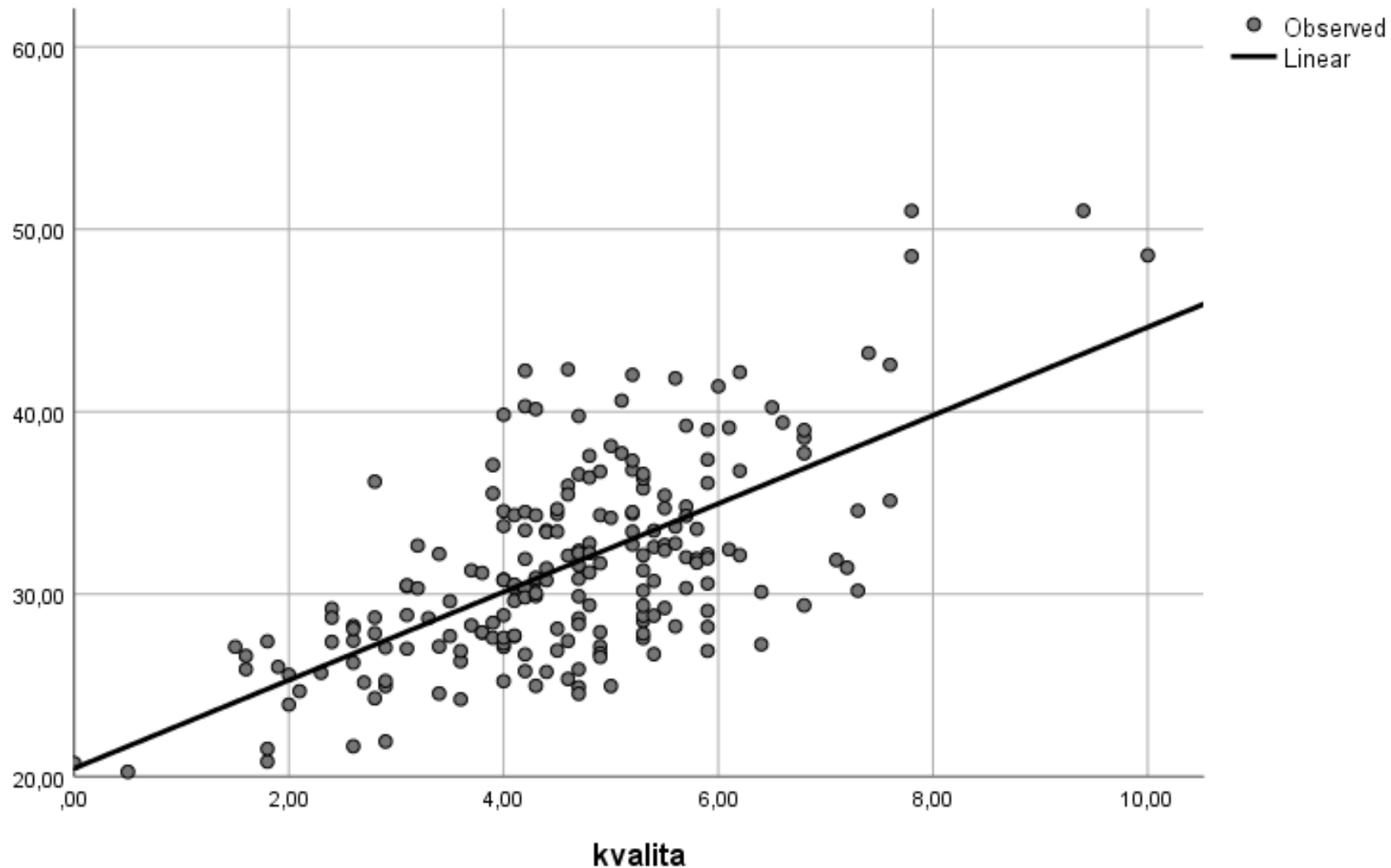
Petr Pavel II.



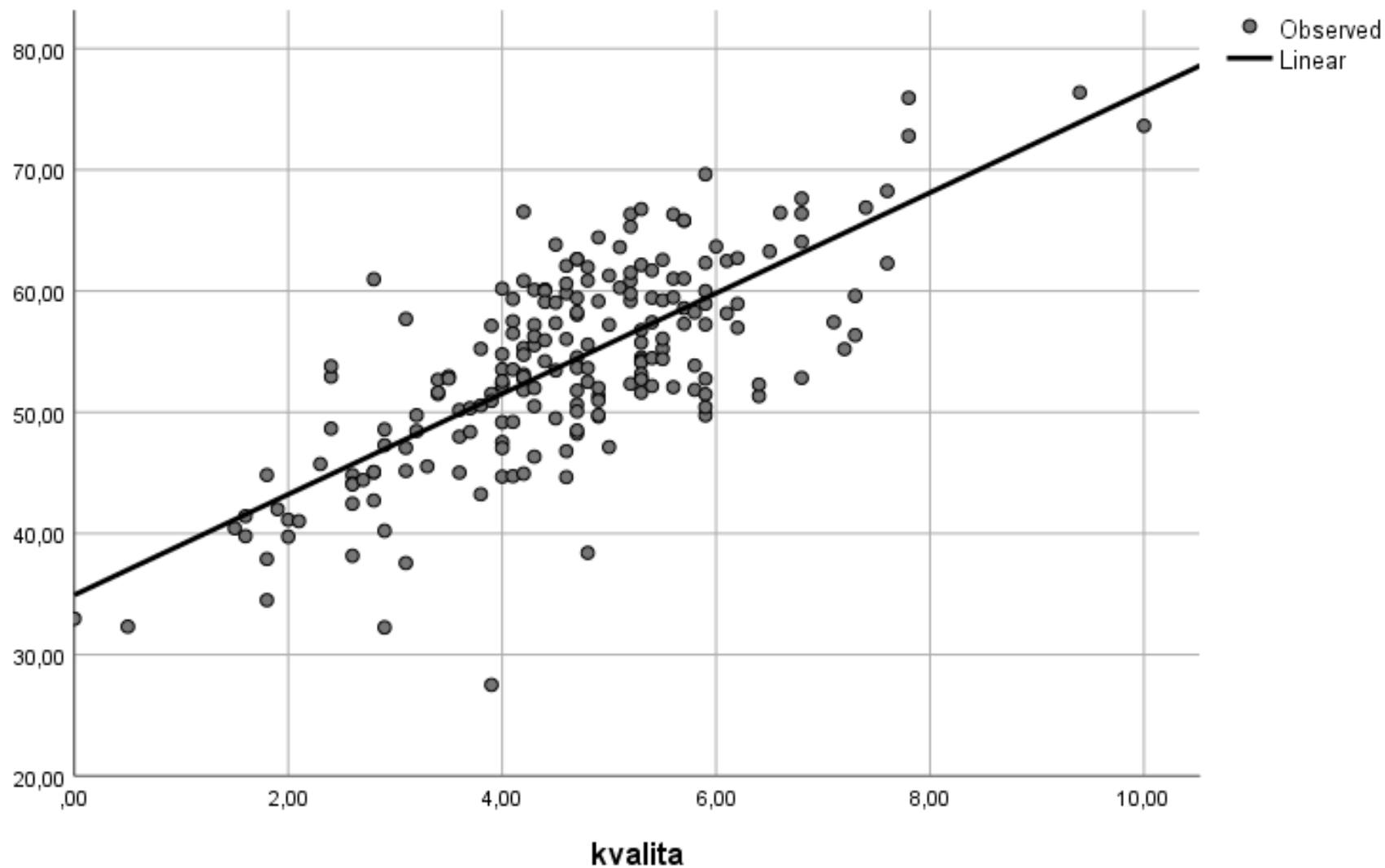
| | |
|------------------------------------|--------------|
| Šlapanice | 67,63 |
| Brno | 68,24 |
| Jilemnice | 69,63 |
| Brandýs nad L. St. Boleslav | 72,79 |
| Říčany | 73,63 |
| Černošice | 75,93 |
| Praha | 76,37 |



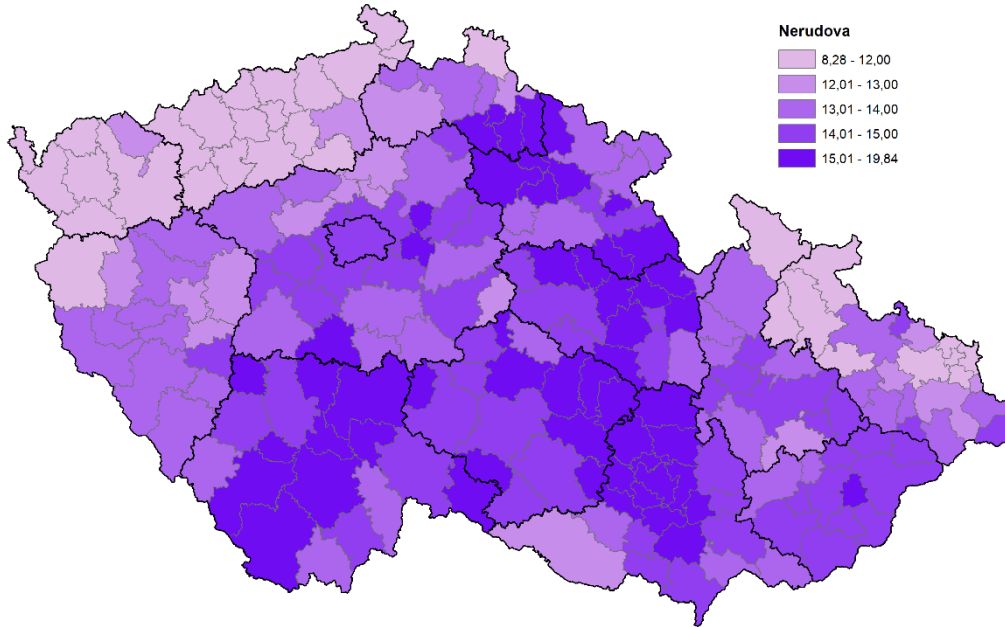
Petr Pavel I. a kvalita života



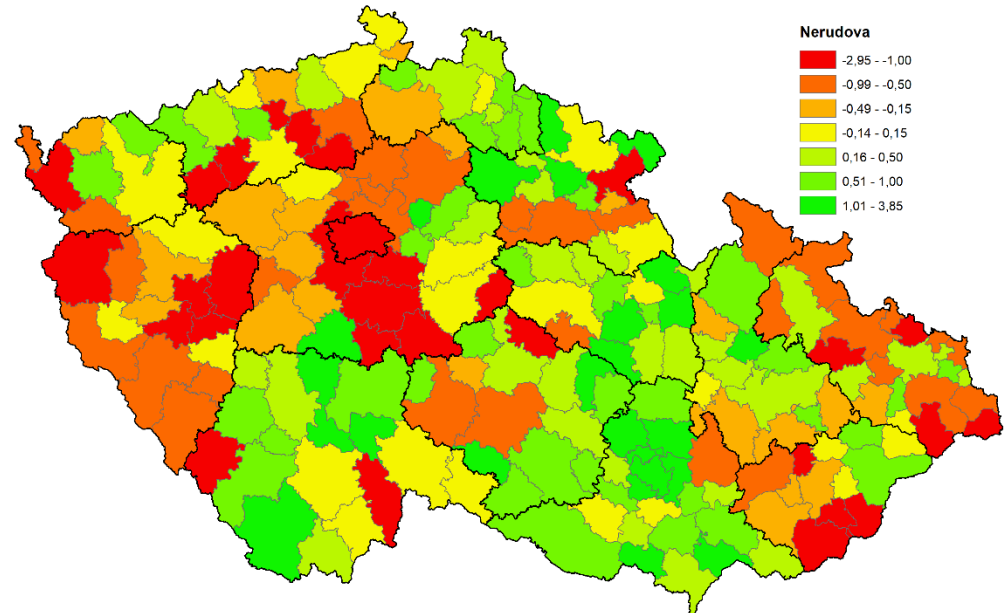
Petr Pavel II. a kvalita života



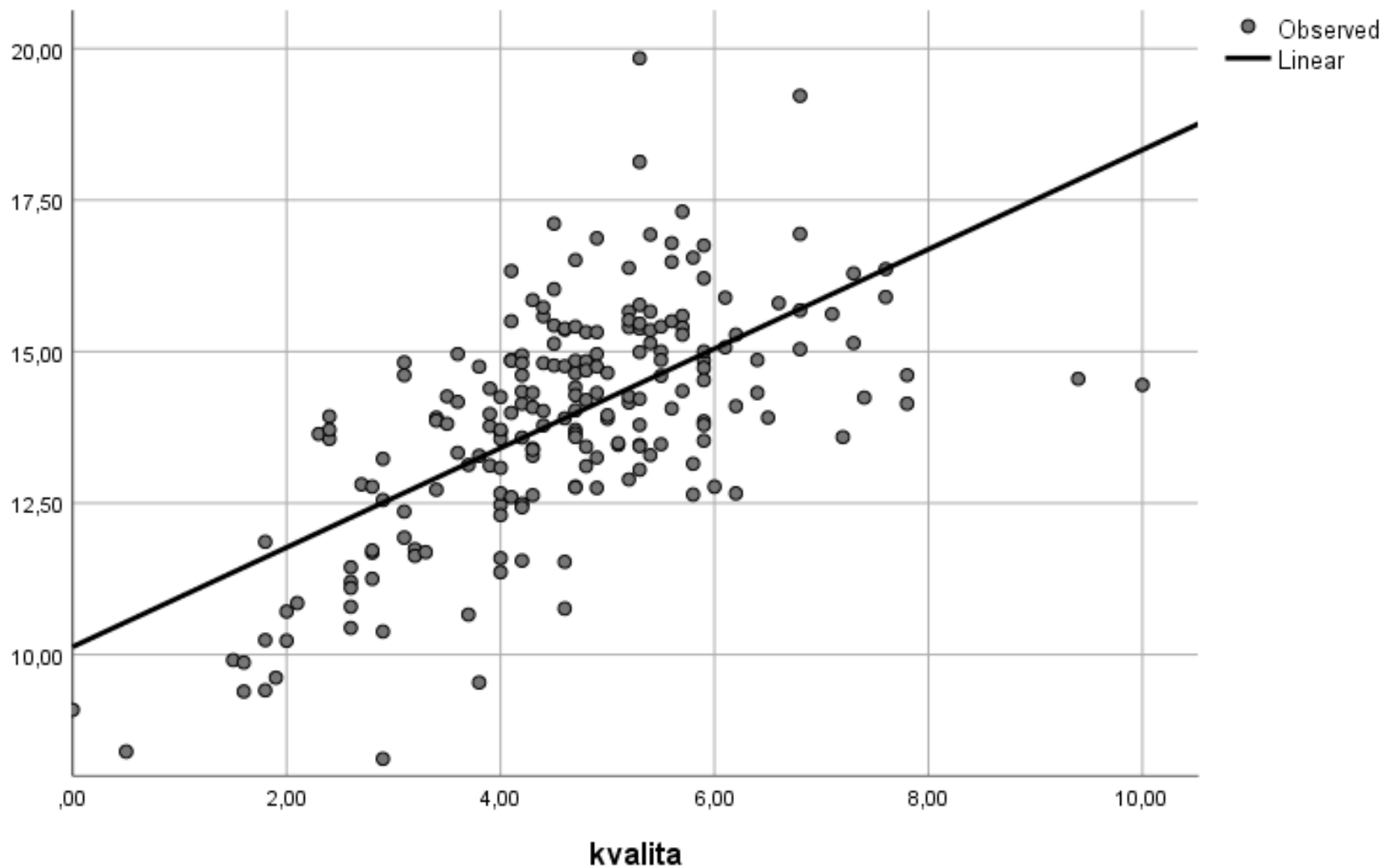
Danuše Nerudová



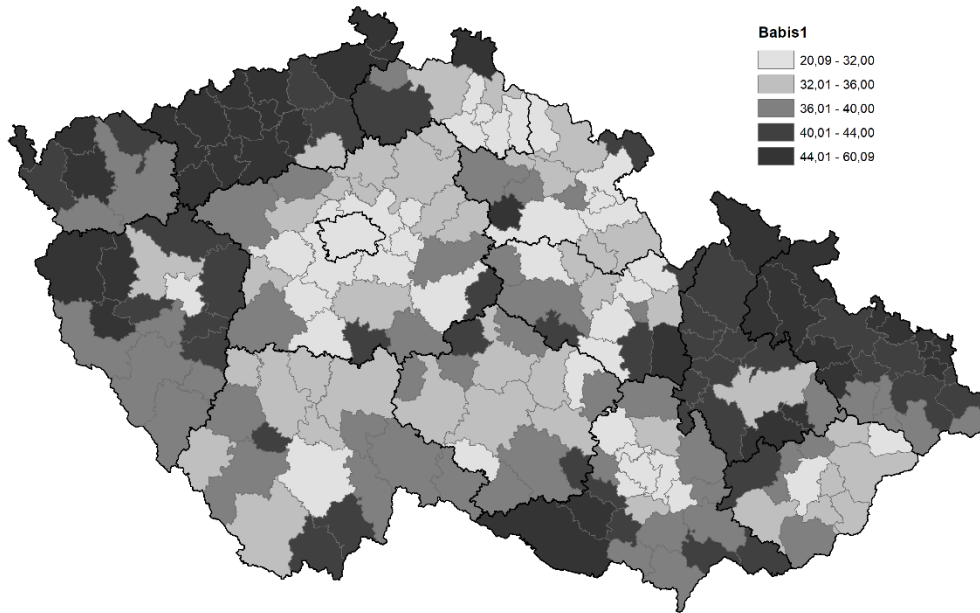
| | |
|------------------|--------------|
| Šlapanice | 16,94 |
| Sedlčany | 17,11 |
| Litomyšl | 17,31 |
| Žamberk | 18,13 |
| Kuřim | 19,22 |
| Polička | 19,84 |



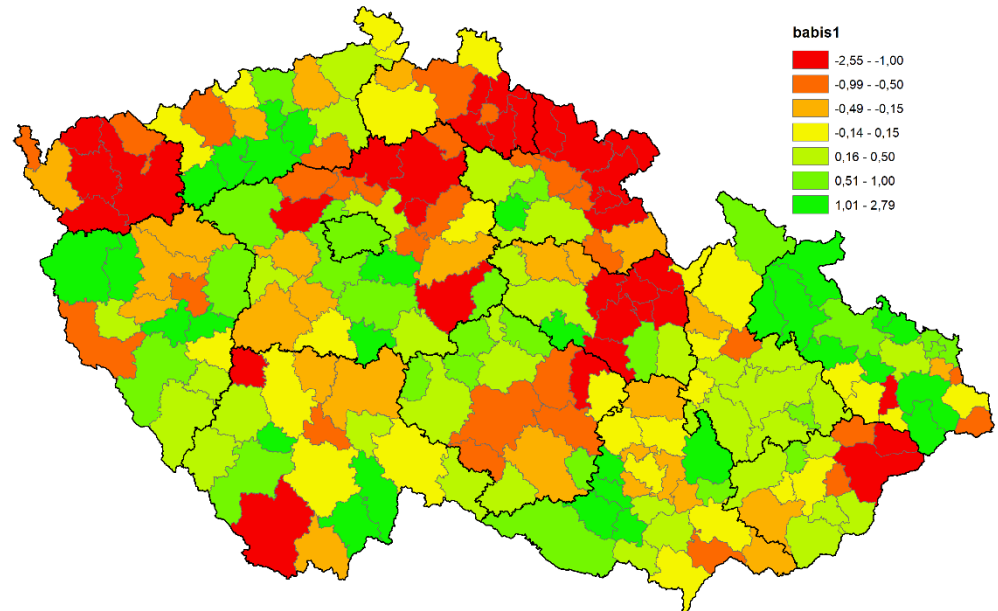
Danuše Nerudová a kvalita života



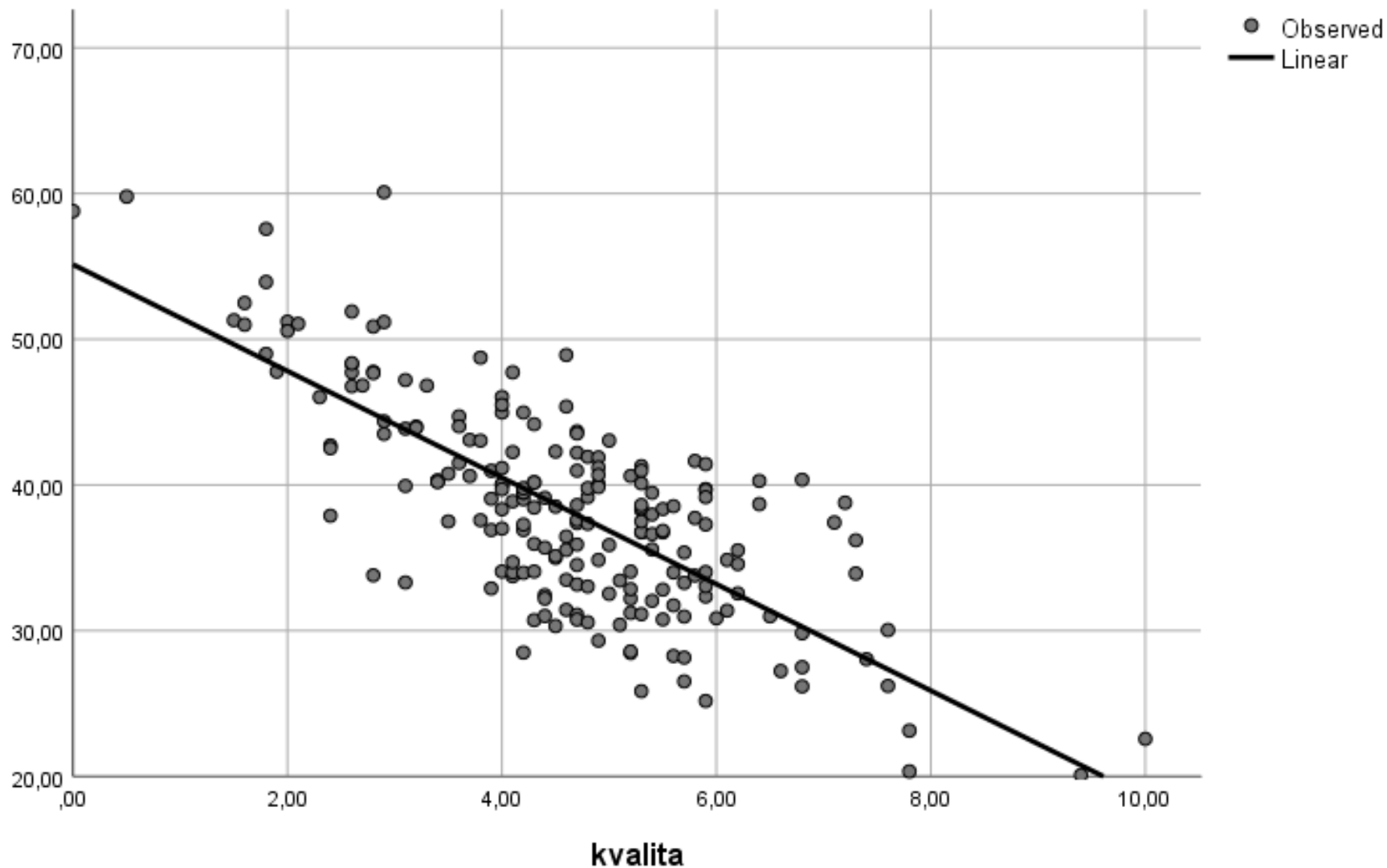
Andrej Babiš I. (II.)



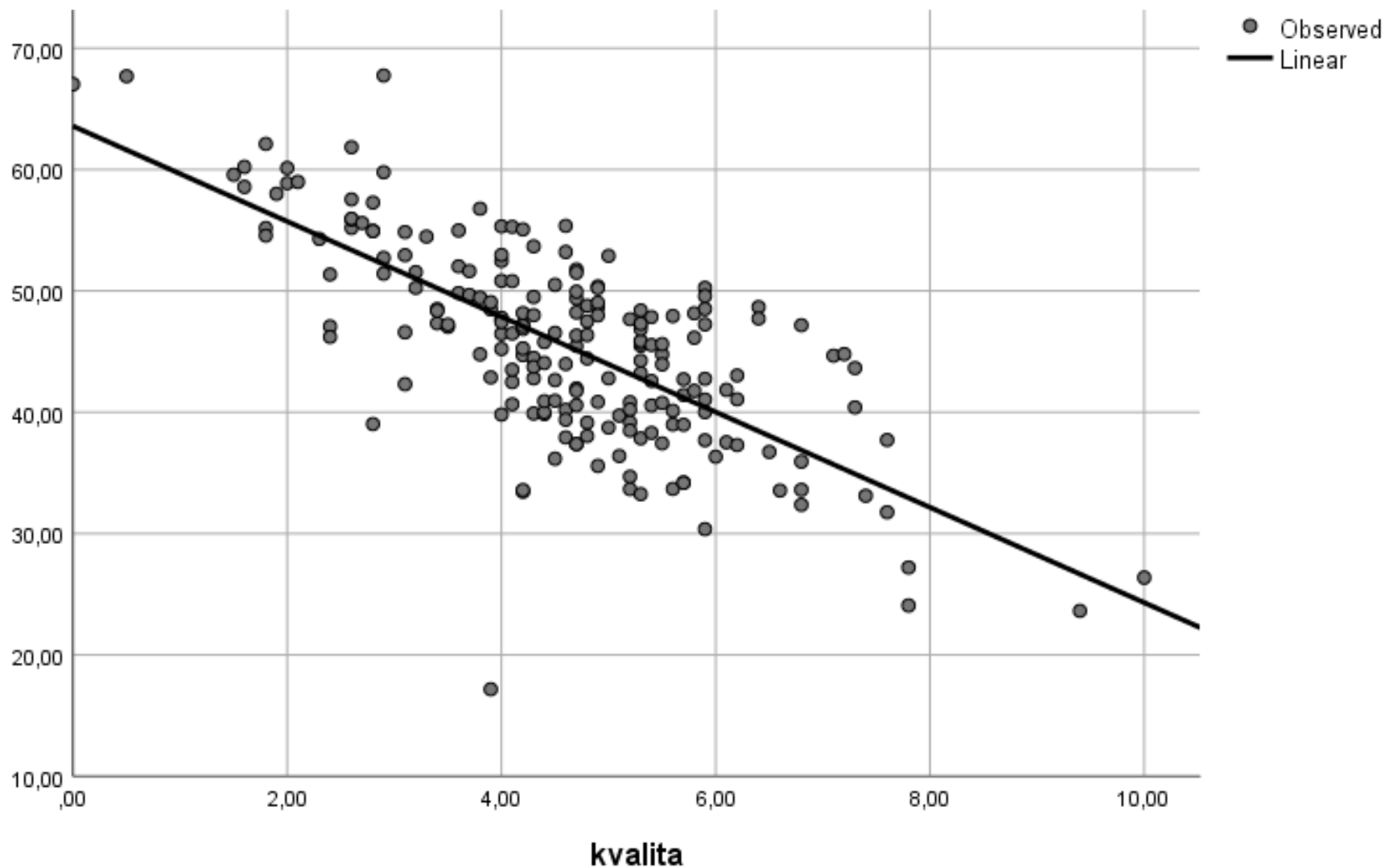
| | | |
|----------------|--------------|--------------|
| Žatec | 52,49 | 60,22 |
| Bruntál | 51,90 | 61,84 |
| Vítkov | 53,93 | 62,11 |
| Orlová | 58,79 | 67,03 |
| Karviná | 59,79 | 67,69 |
| Bílina | 60,09 | 67,75 |



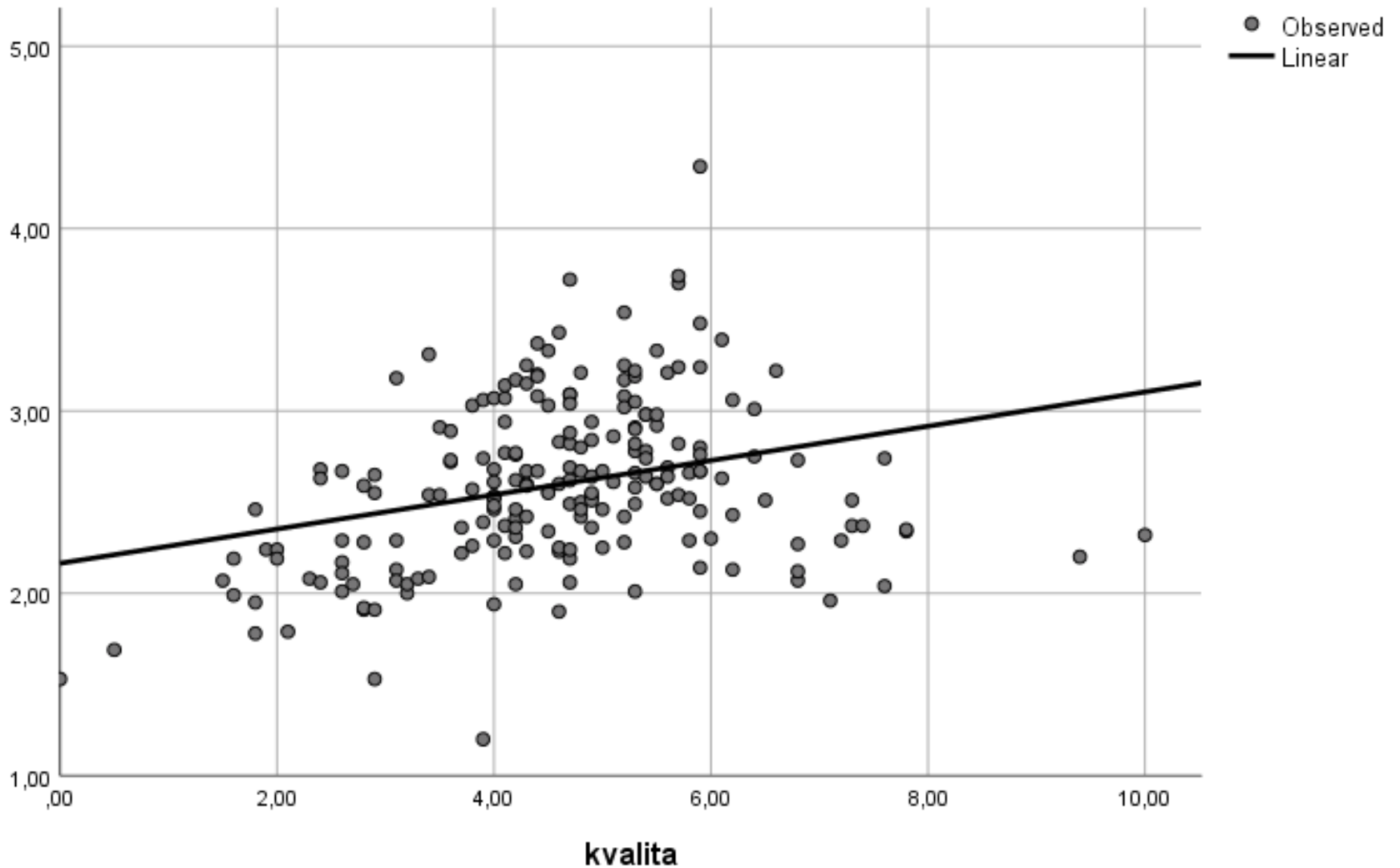
Andrej Babiš I. a kvalita života



Andrej Babiš II. a kvalita života



Marek Hilšer a kvalita života



Vzájemné souvislosti 2023

| | Pavel II. Kolo | Babiš II. Kolo |
|-----------------------|-----------------------|-----------------------|
| Fischer | 0,523 | -0,499 |
| Bašta | -0,429 | 0,429 |
| Pavel I. | 0,831 | -0,874 |
| Nerudová | 0,681 | -0,680 |
| Babiš I. | -0,931 | 0,961 |
| Hilšer | 0,446 | -0,328 |
| Účast II. Kolo | 0,125 | -0,125 |
| Účast I. Kolo | 0,721 | -0,726 |

Závěrem

- Prezidentské volby – rozdělená země ?
- Hlavní cleavage pravice/levice (město/venkov)
- Větší město/menší město a venkov
- Přítomnost příměstských oblastí
- Historický kontext – Sudety
- Méně významná – socioekonomická cleavage?