

Prezidentské volby

Michal Pink

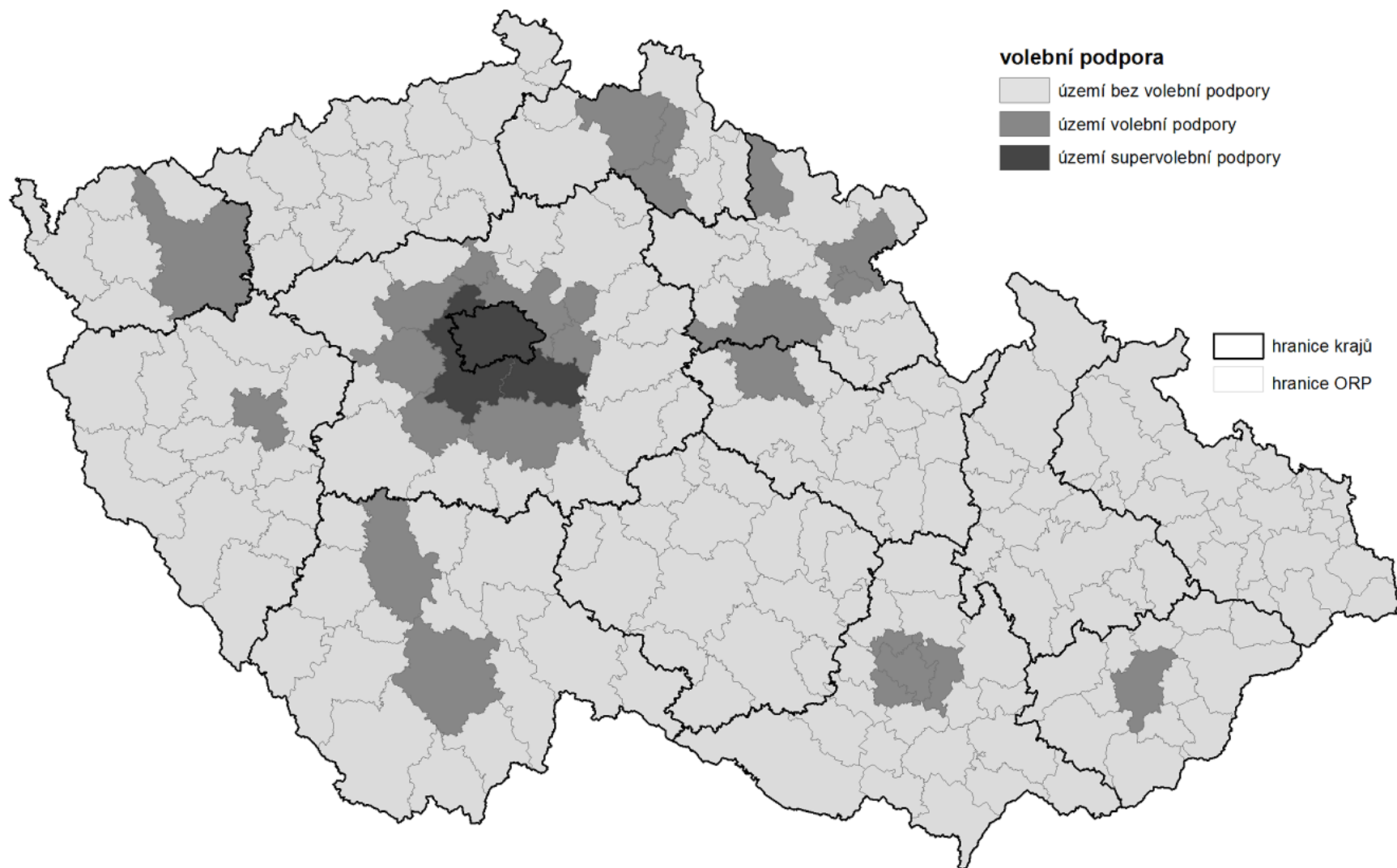
pink@fss.muni.cz

Prezidentské volby 2013

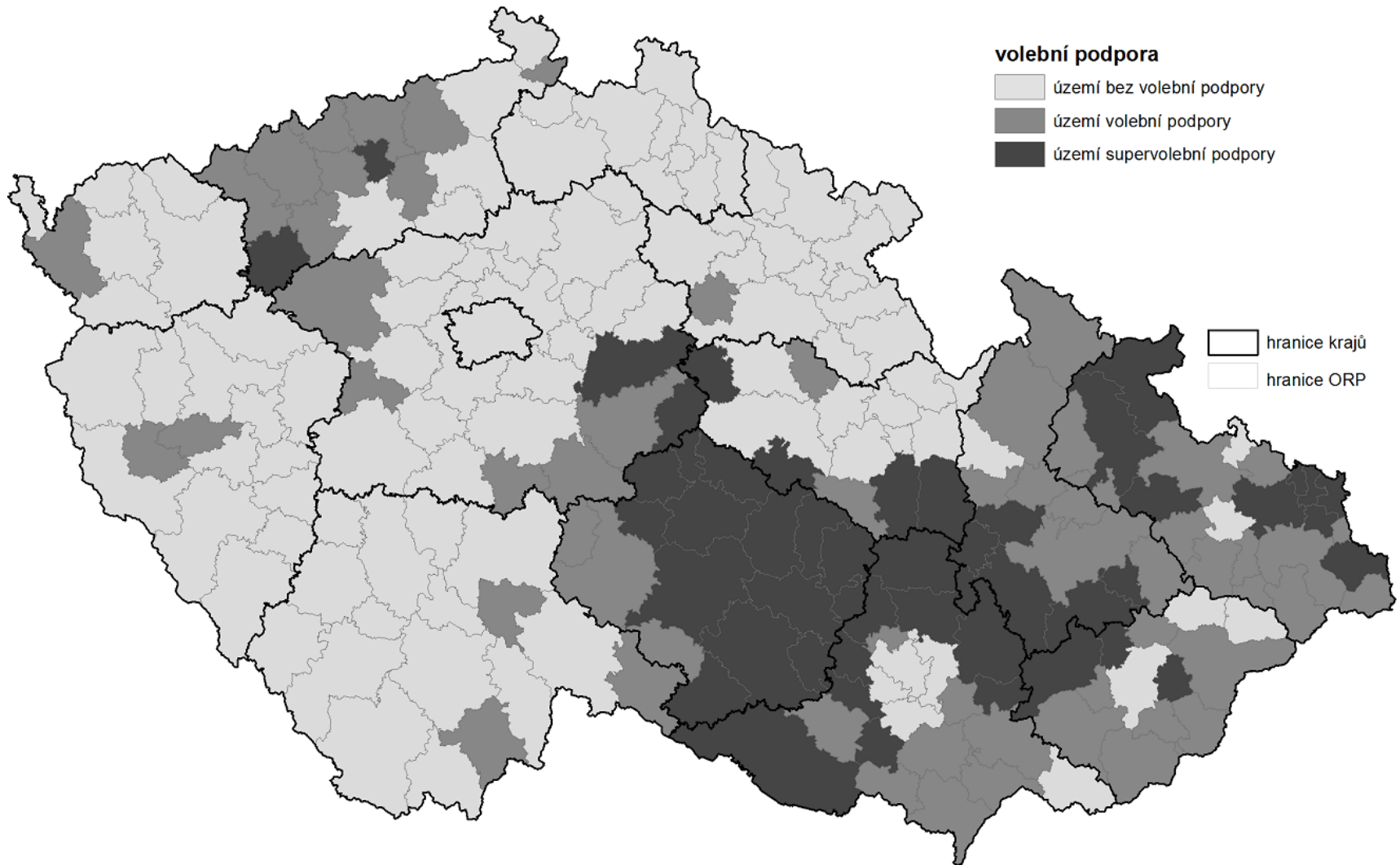
	I. Votes	I. %	II. Votes	II. %
Roithová (KDU)	255045	4,95		
Fischer (Ind.)	841437	16,35		
Bobošíková (Nat. Right)	123171	2,39		
Fischerová (Green)	166211	3,23		
Sobotka (ODS)	126846	2,46		
Zeman (Left)	1245848	24,21	2717405	54,80
Franz (Ind.)	351916	6,84		
Dienstbier (ČSSD)	829297	16,12		
Schwarzenberg (Lib. con.)	1204195	23,40	2241171	45,19



Karel Schwarzenberg I. 2013



Miloš Zeman I. 2013

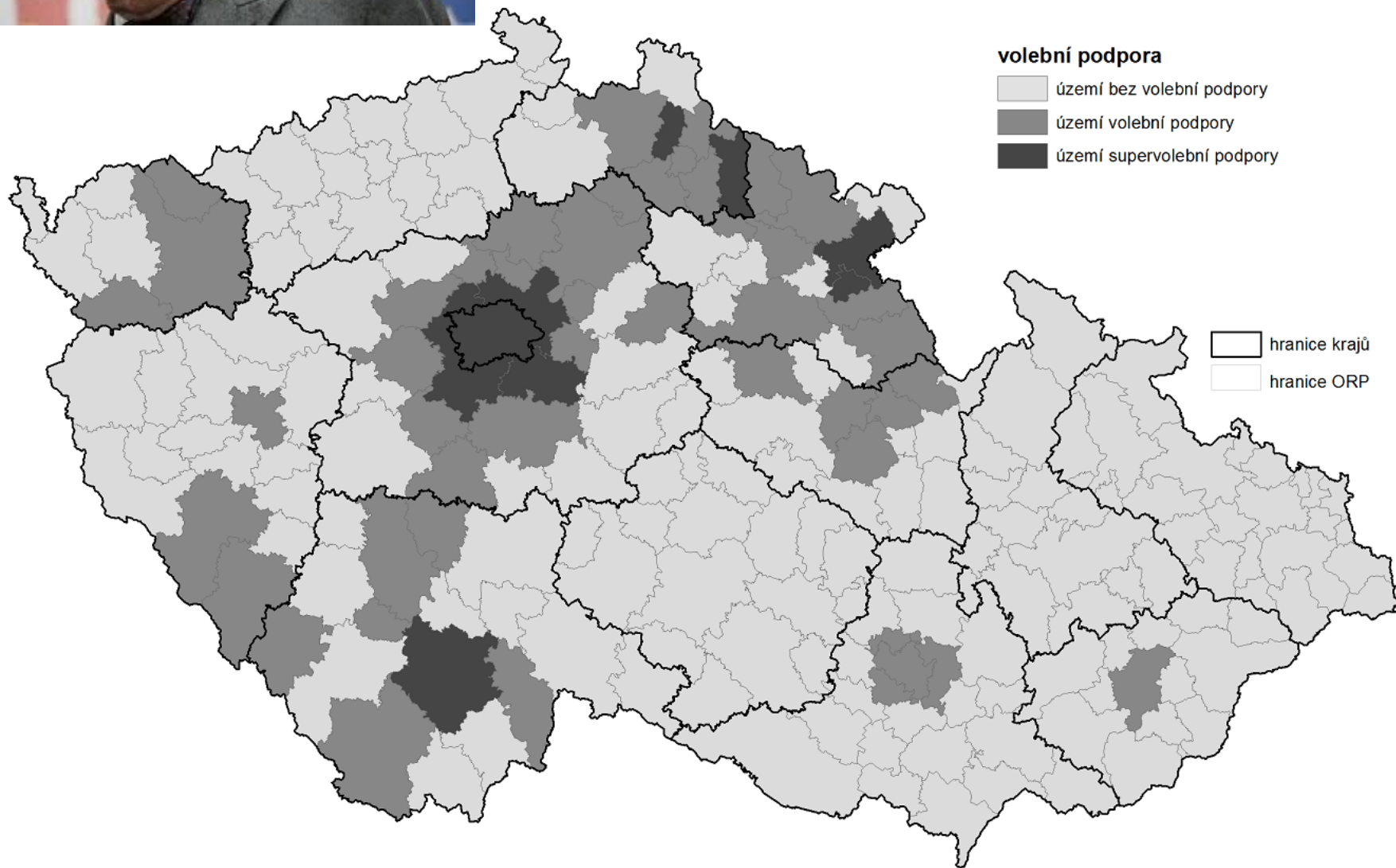


Vzájemné souvislosti 2013

	ČSSD+KSČM	TOP09+ODS
Roithova	-0,14	-0,19
Fischer	0,40	-0,39
Bobošíková	0,45	-0,50
Fischerova	-0,53	0,41
Sobotka	-0,55	0,63
Zeman	0,66	-0,70
Franz	-0,02	0,10
Dienstbier	0,76	-0,62
Schwarzenberg	-0,84	0,93

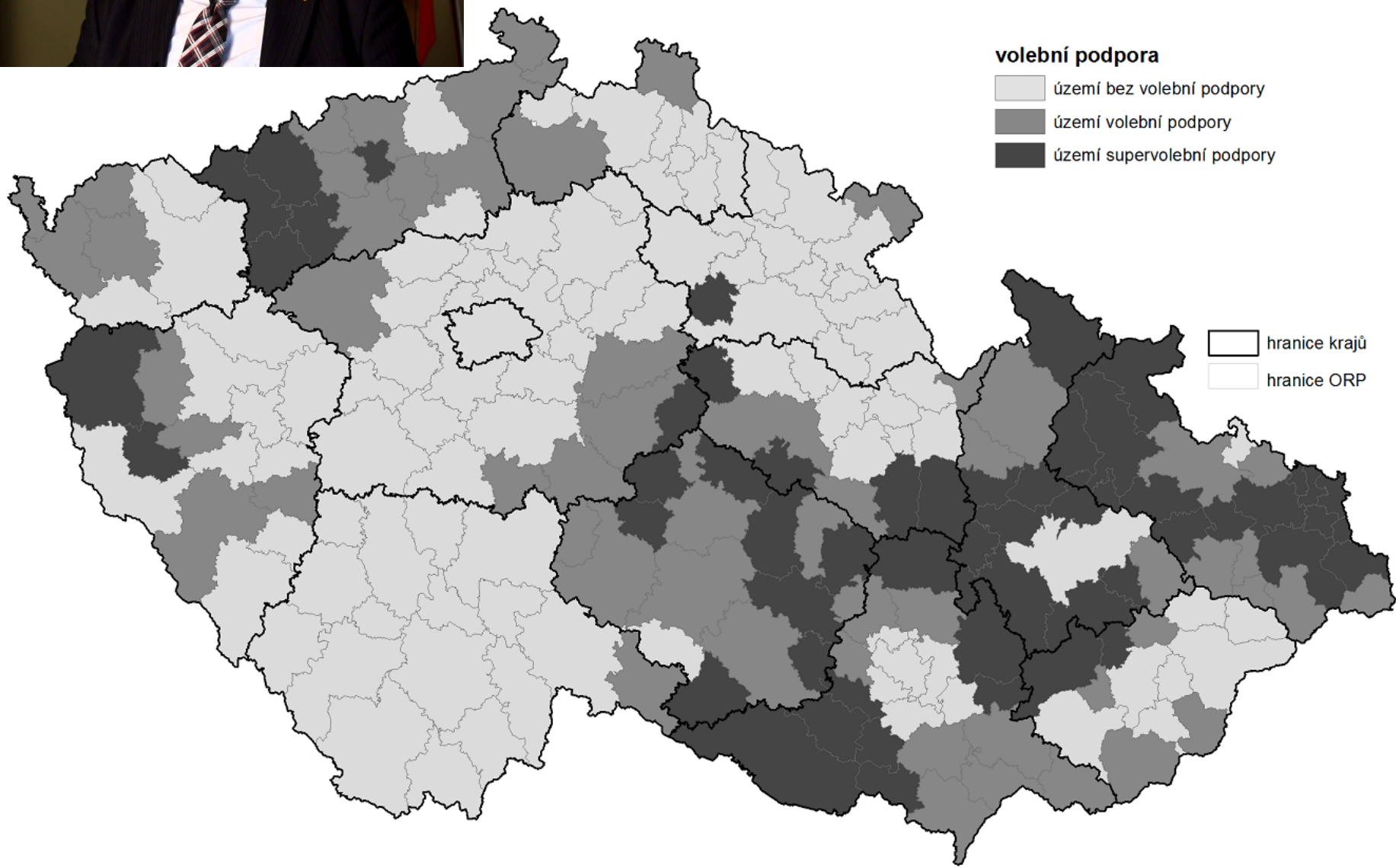


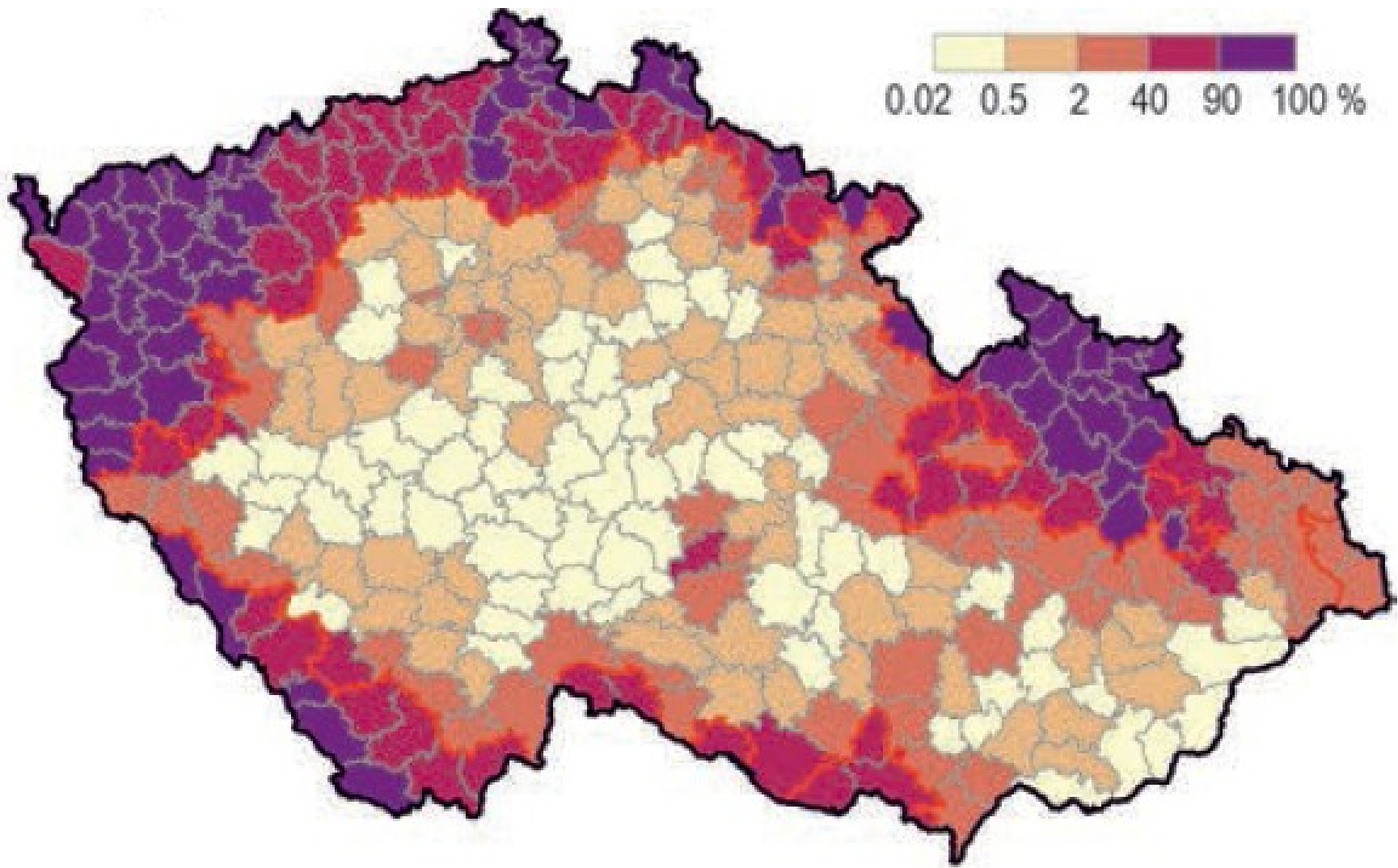
II. Kolo

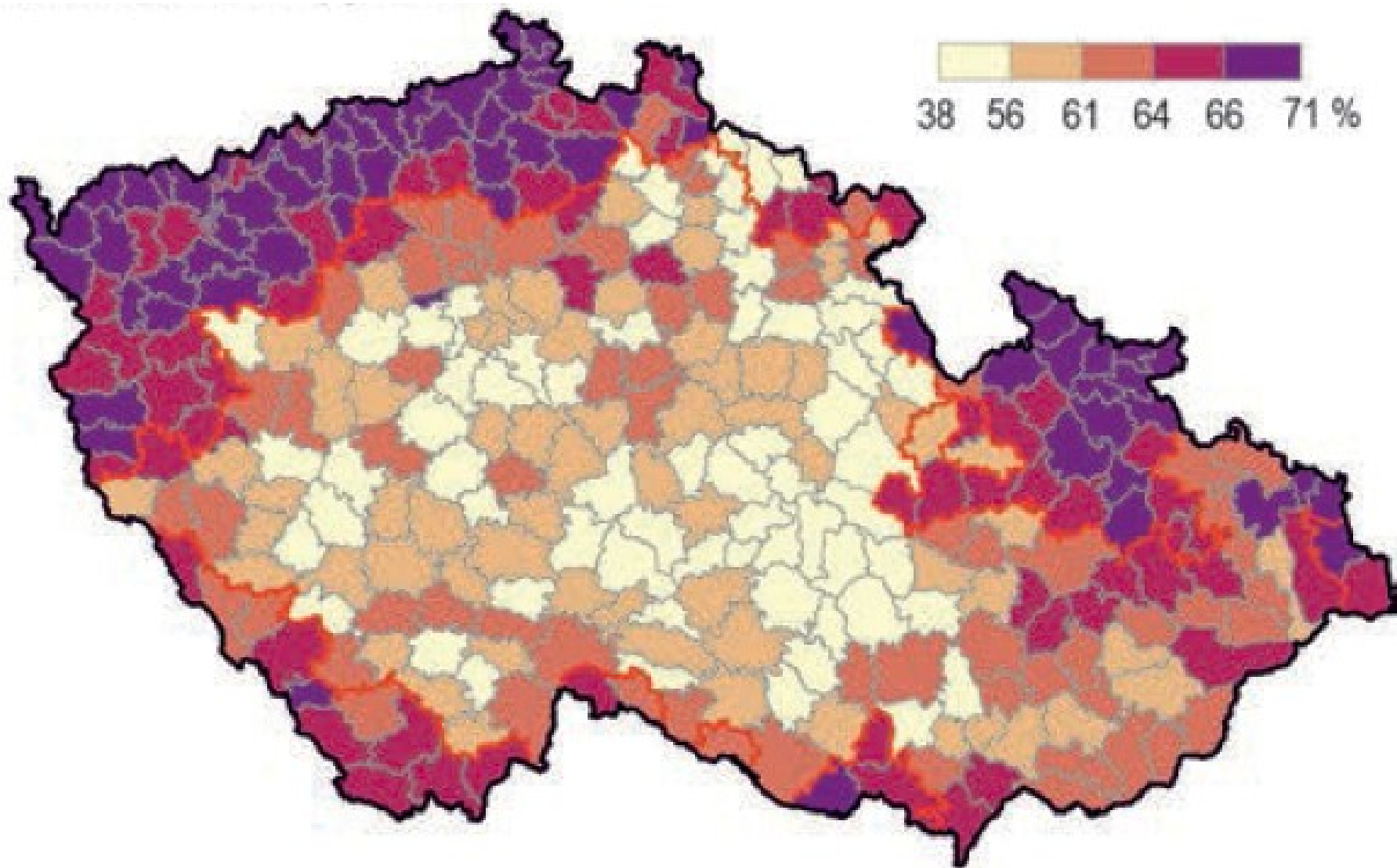




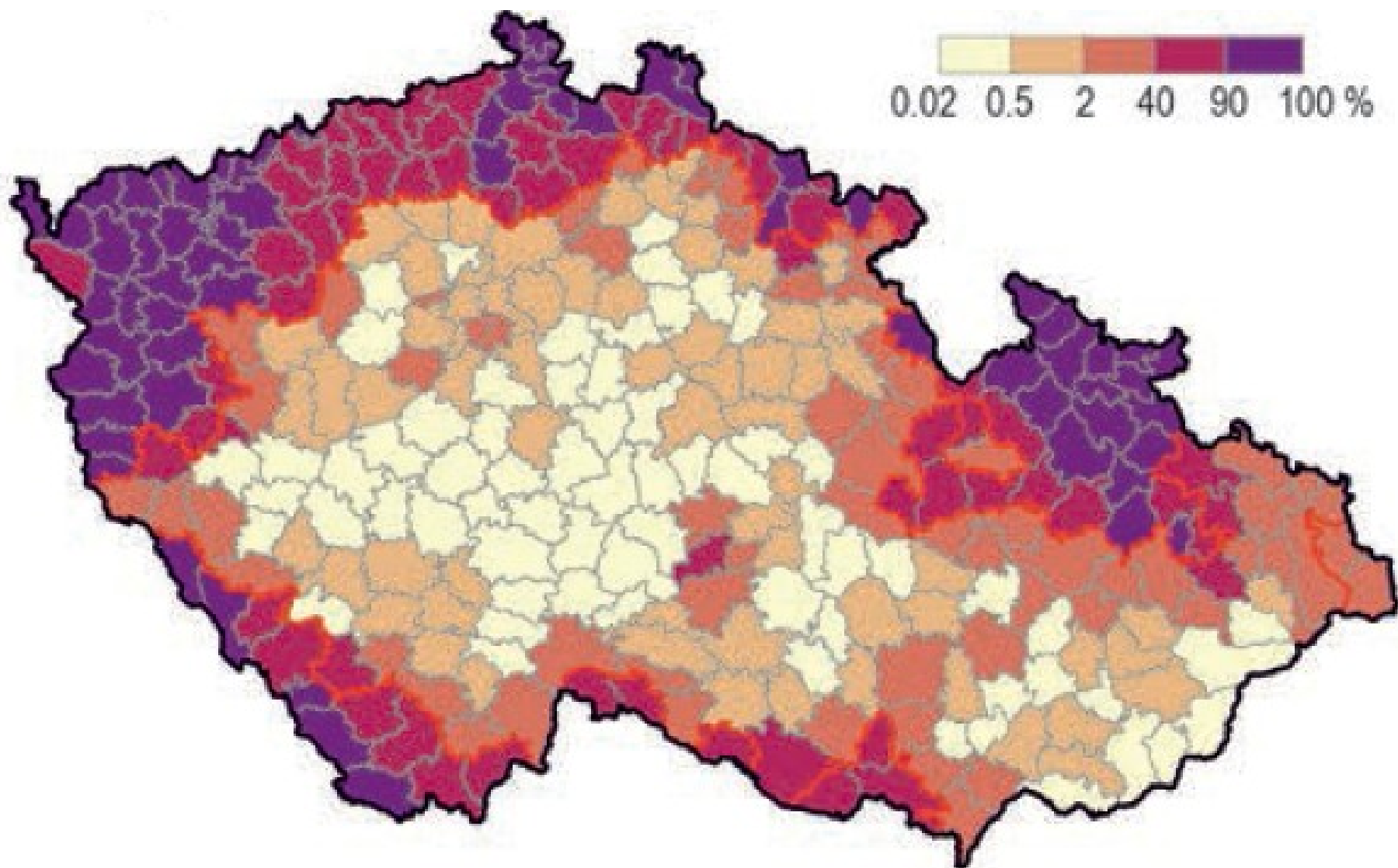
II. Kolo



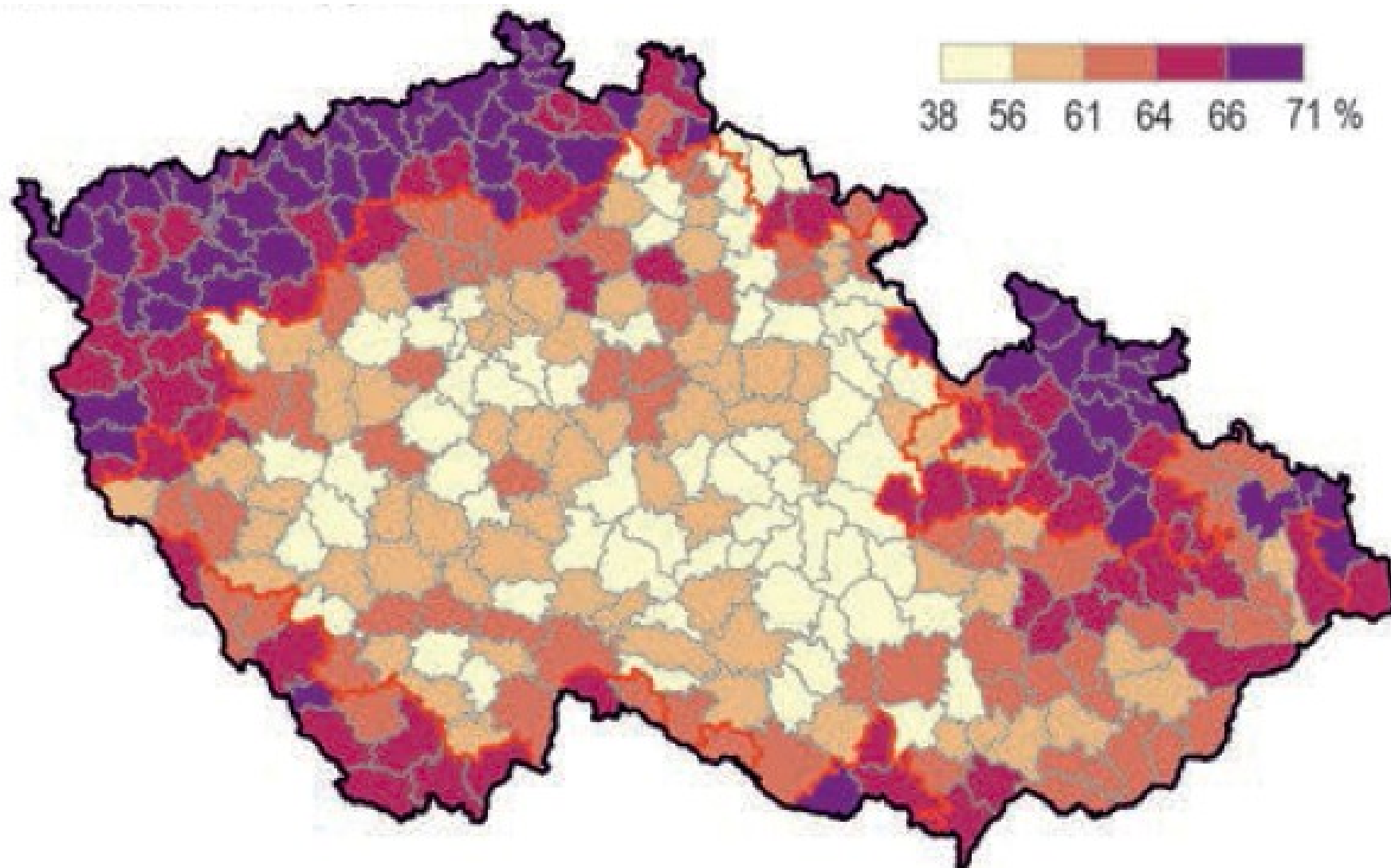




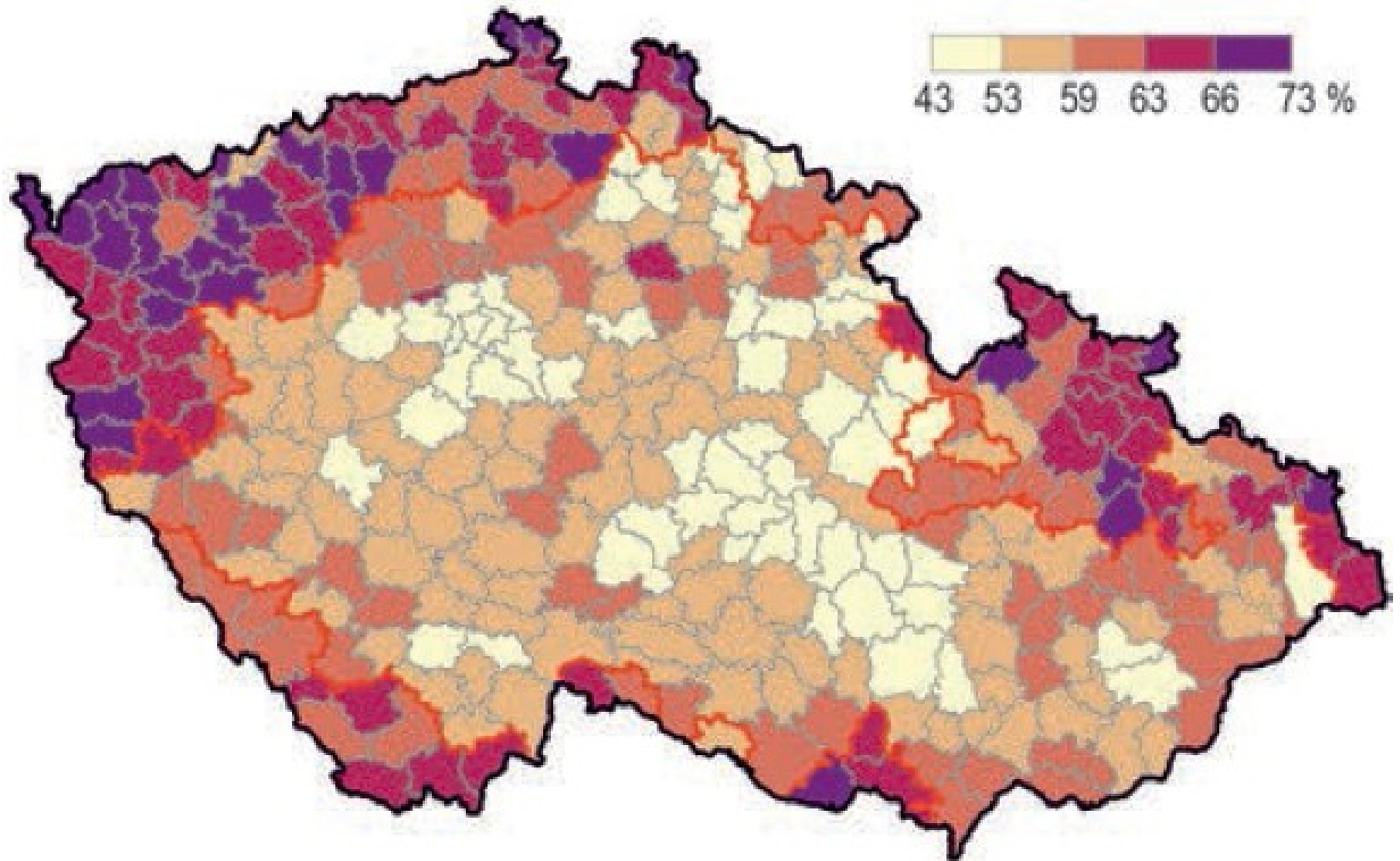
Německy hovořící obyvatelstvo 1930



Volební abstence 2013



Volební abstence 2010



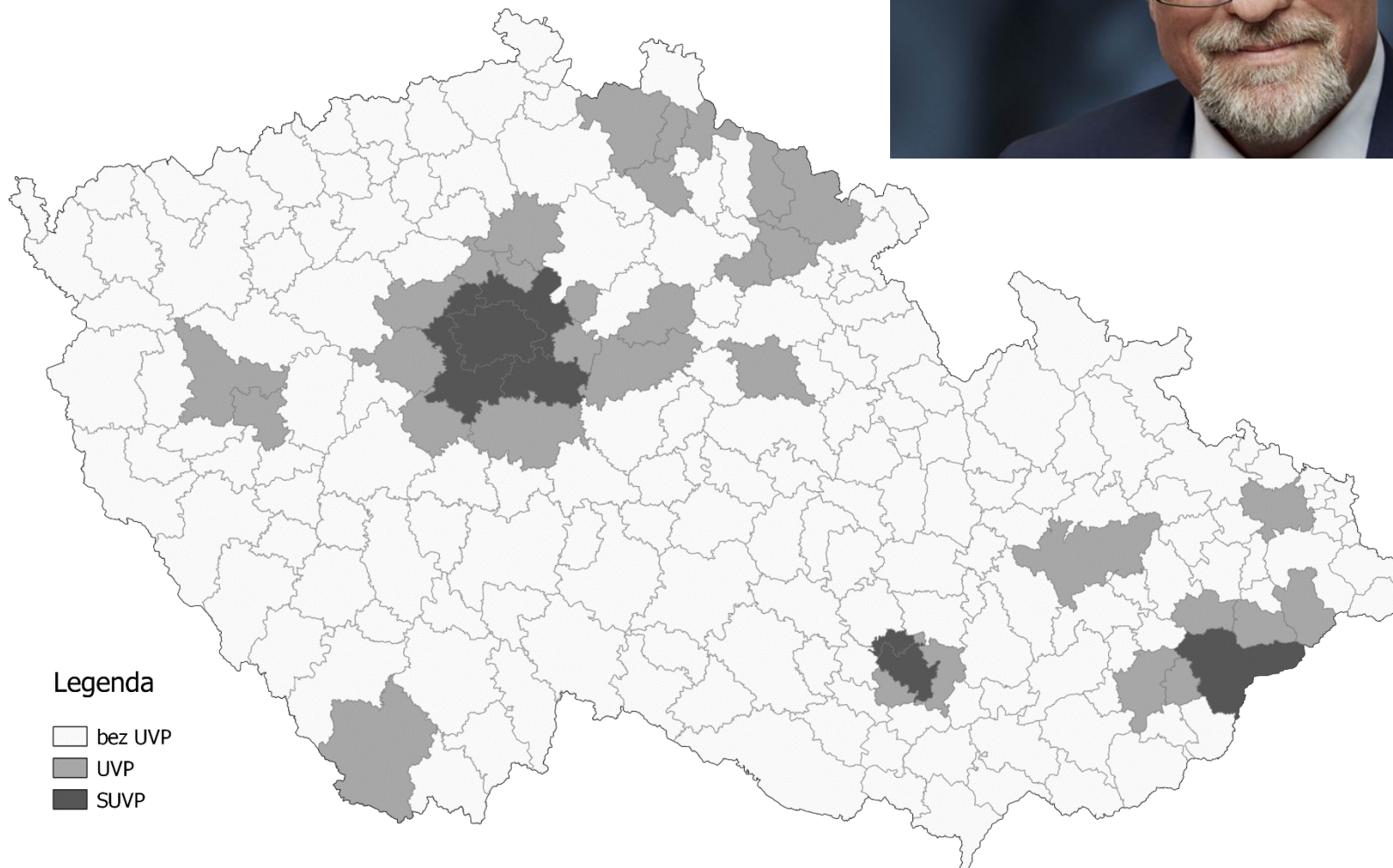
Prezidentské volby 2018

	I. Votes	I. %	II. Votes	II. %
Topolánek (Ind.)	221689	4,30		
Horáček (Ind.)	472643	9,18		
Fischer (Ind. – opos.)	526694	10,23		
Hynek (Ind.)	63348	1,23		
Hannig (Ind.)	29228	0,56		
Kulhánek (Ind.)	24442	0,47		
Zeman (Pres.)	1985547	38,56	2853390	51,36
Hilšer (Ind.)	454949	8,83		
Drahoš (Ind. – opos.)	1369601	26,60	2701206	48,63

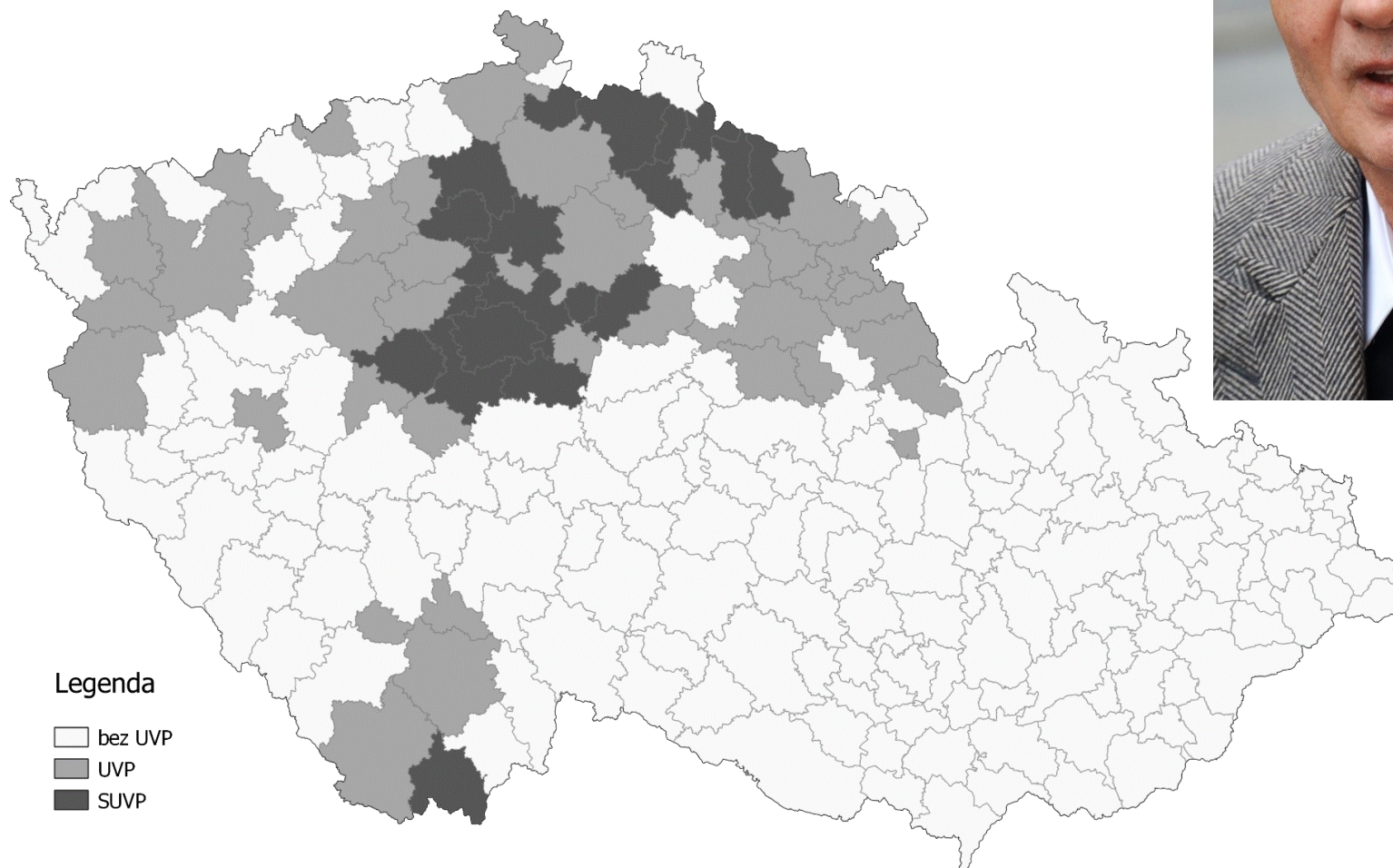
Vzájemné souvislosti 2018 I.

	Topolánek	Horáček	Fischer	Zeman I.	Hilšer	Drahoš I.
ANO	-0,397	-0,082	-0,698	0,707	-0,265	-0,496
ODS	0,705	0,540	0,287	-0,777	0,468	0,507
Pirati	0,567	0,516	0,223	-0,772	0,541	0,576
Okamura	-0,336	-0,299	-0,340	0,691	-0,470	-0,549
KSČM	-0,504	-0,199	-0,455	0,717	-0,256	-0,616
ČSSD	-0,439	-0,554	-0,012	0,386	-0,425	-0,090
KDU- ČSL	-0,268	-0,570	0,745	-0,091	-0,310	0,131
TOP09	0,609	0,498	0,253	-0,711	0,418	0,487
STAN	0,326	0,323	0,047	-0,436	0,443	0,301

Mirek Topolánek 4,30 %



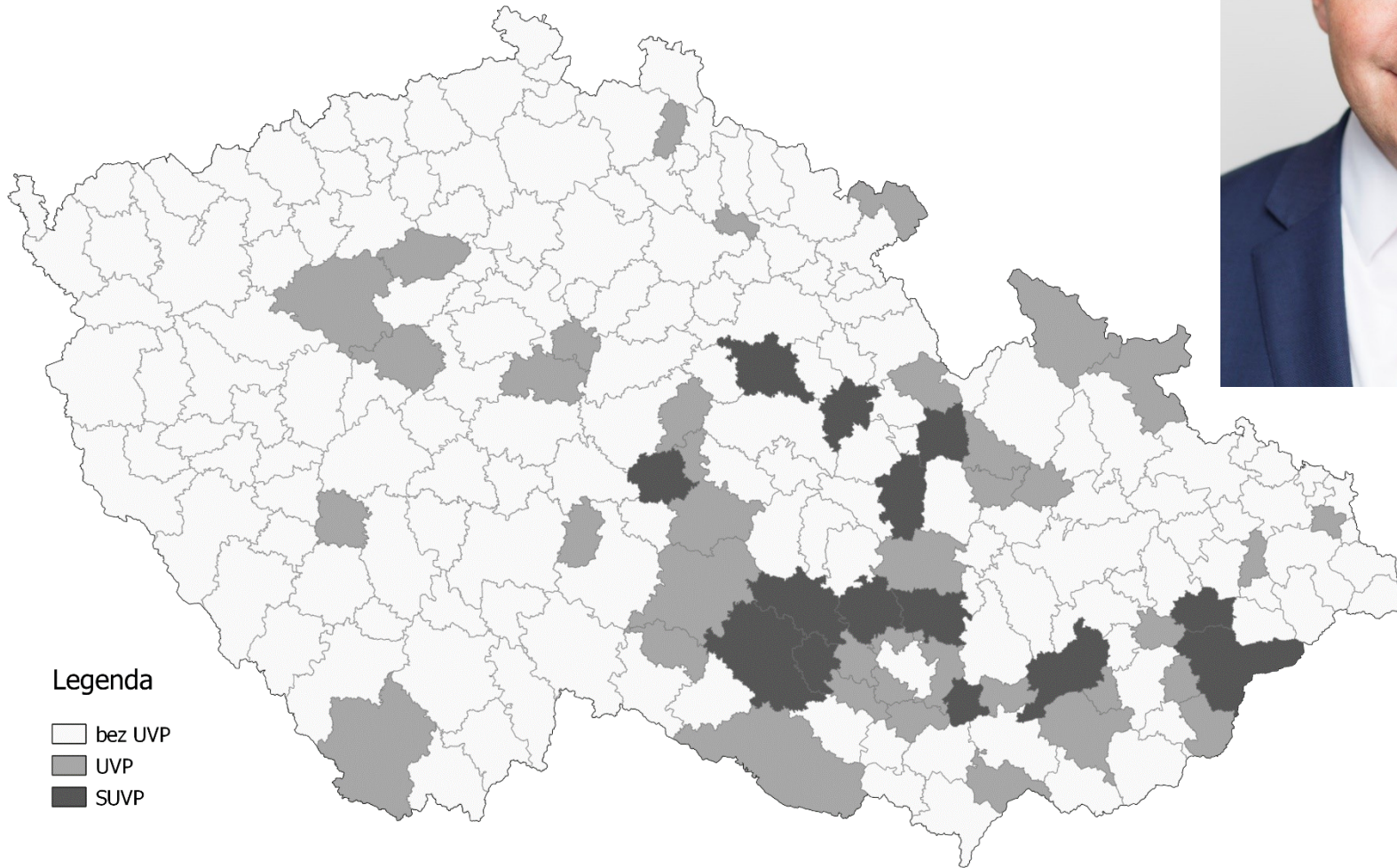
Michal Horáček 9,18 %



Legenda

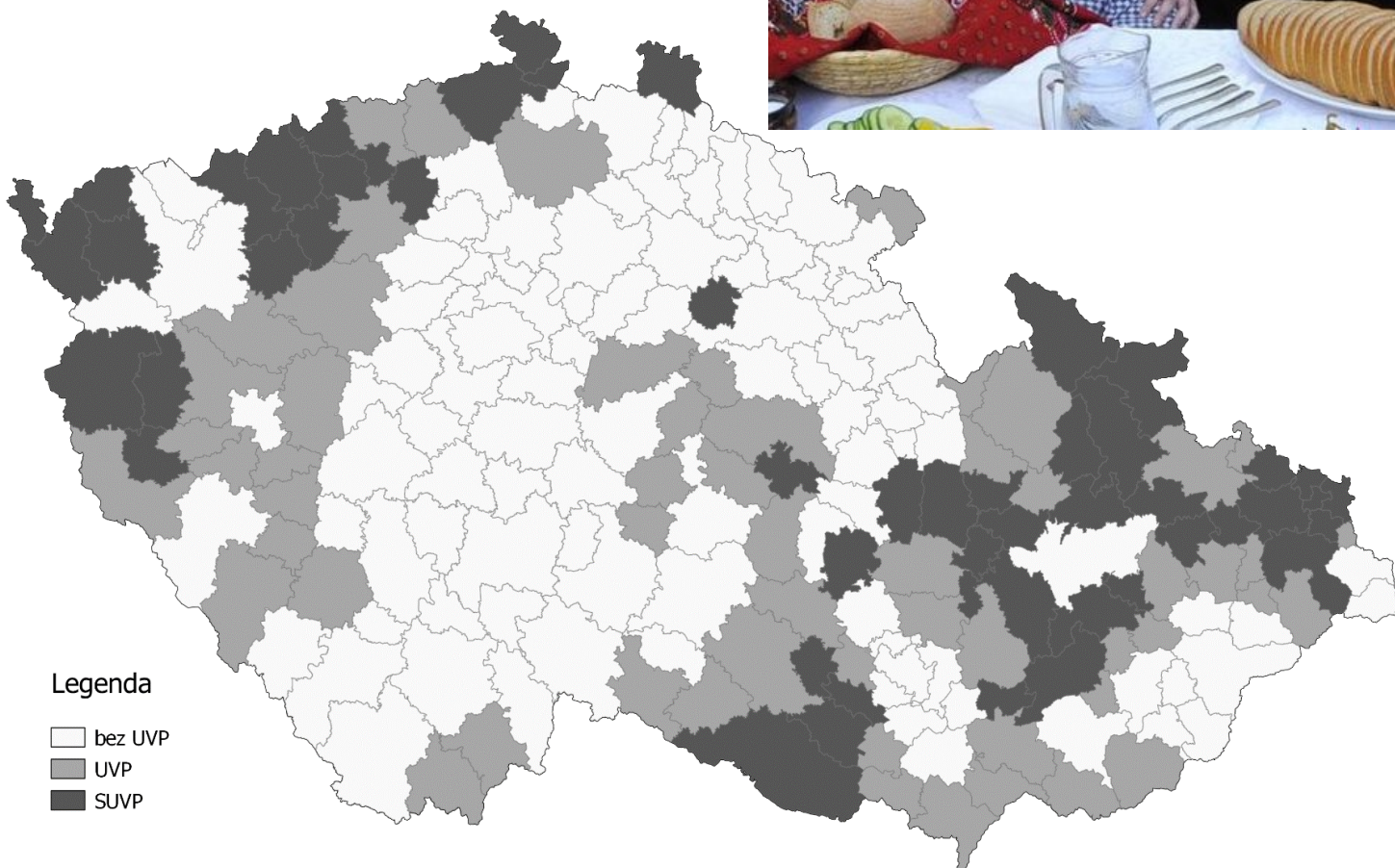
- bez UVP
- UVP
- SUVP

Pavel Fischer 10,23%



Miloš Zeman I.

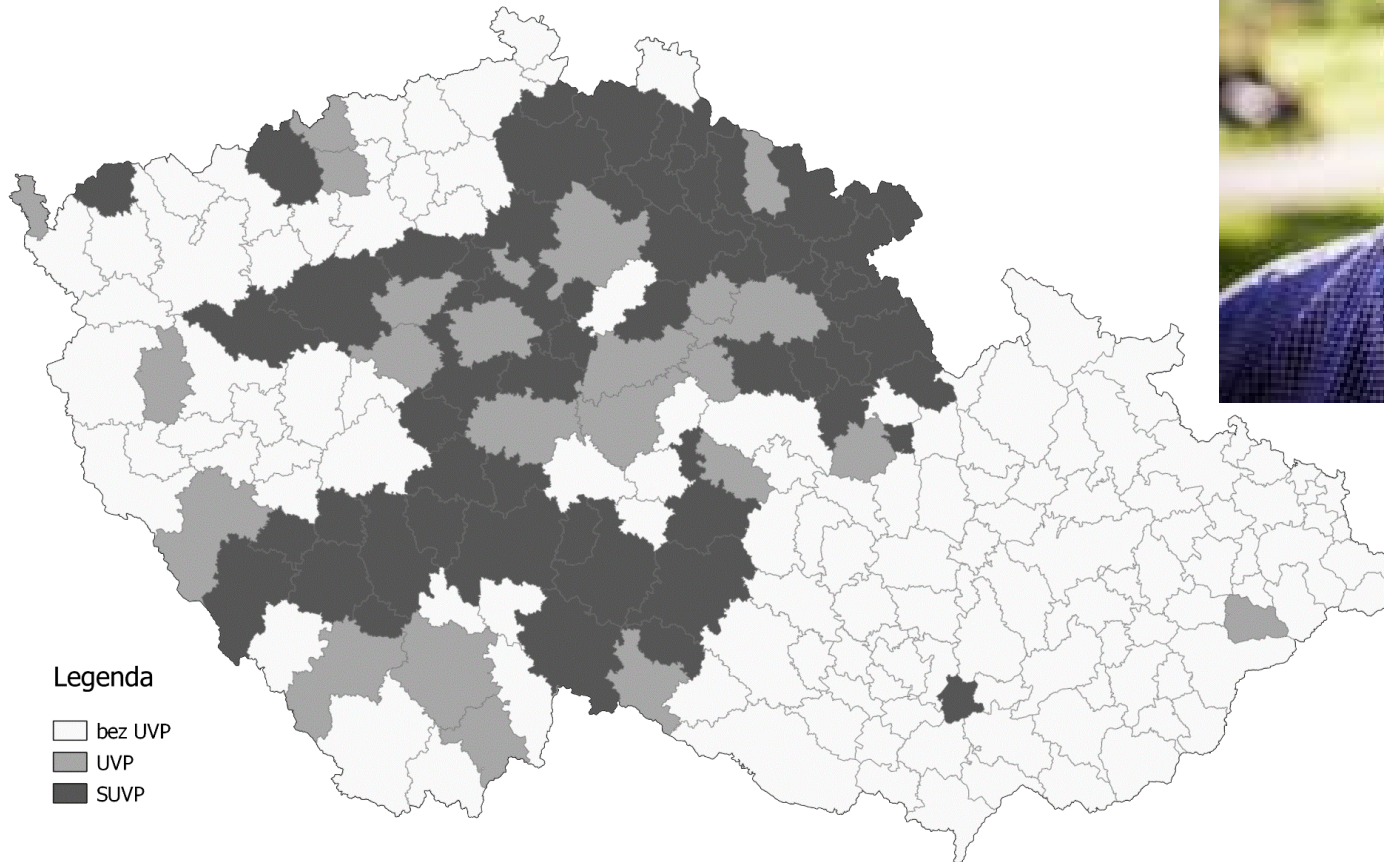
38,56%



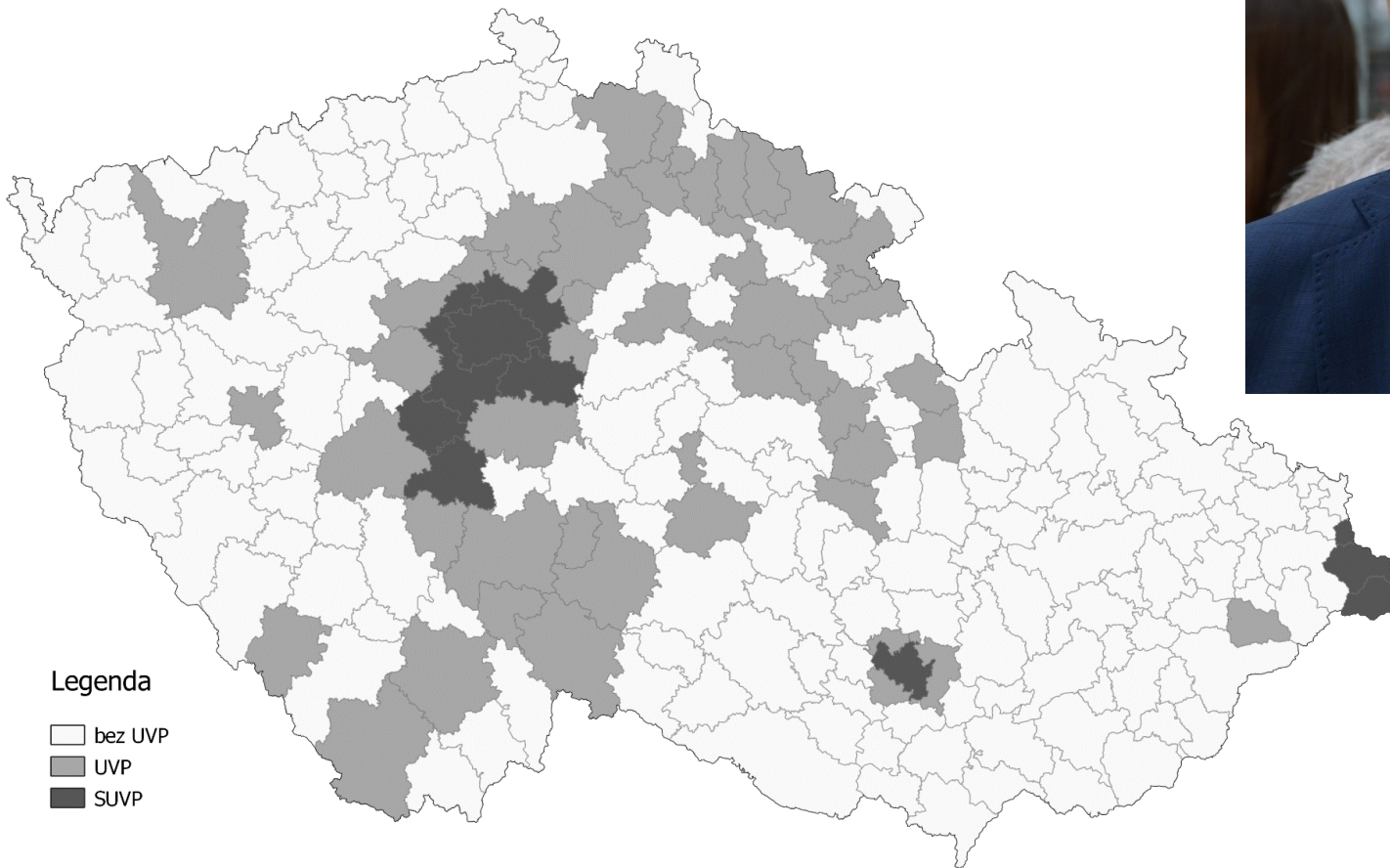
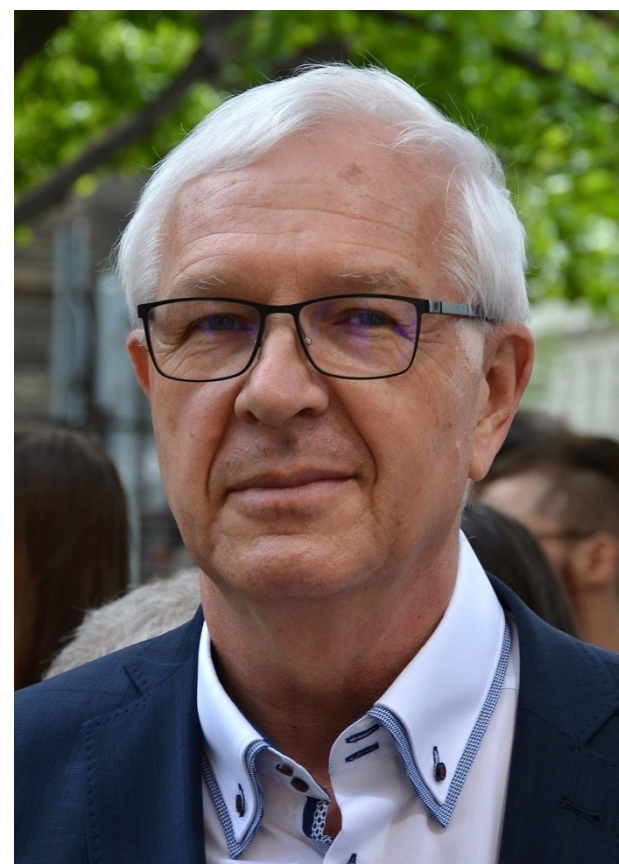
Legenda

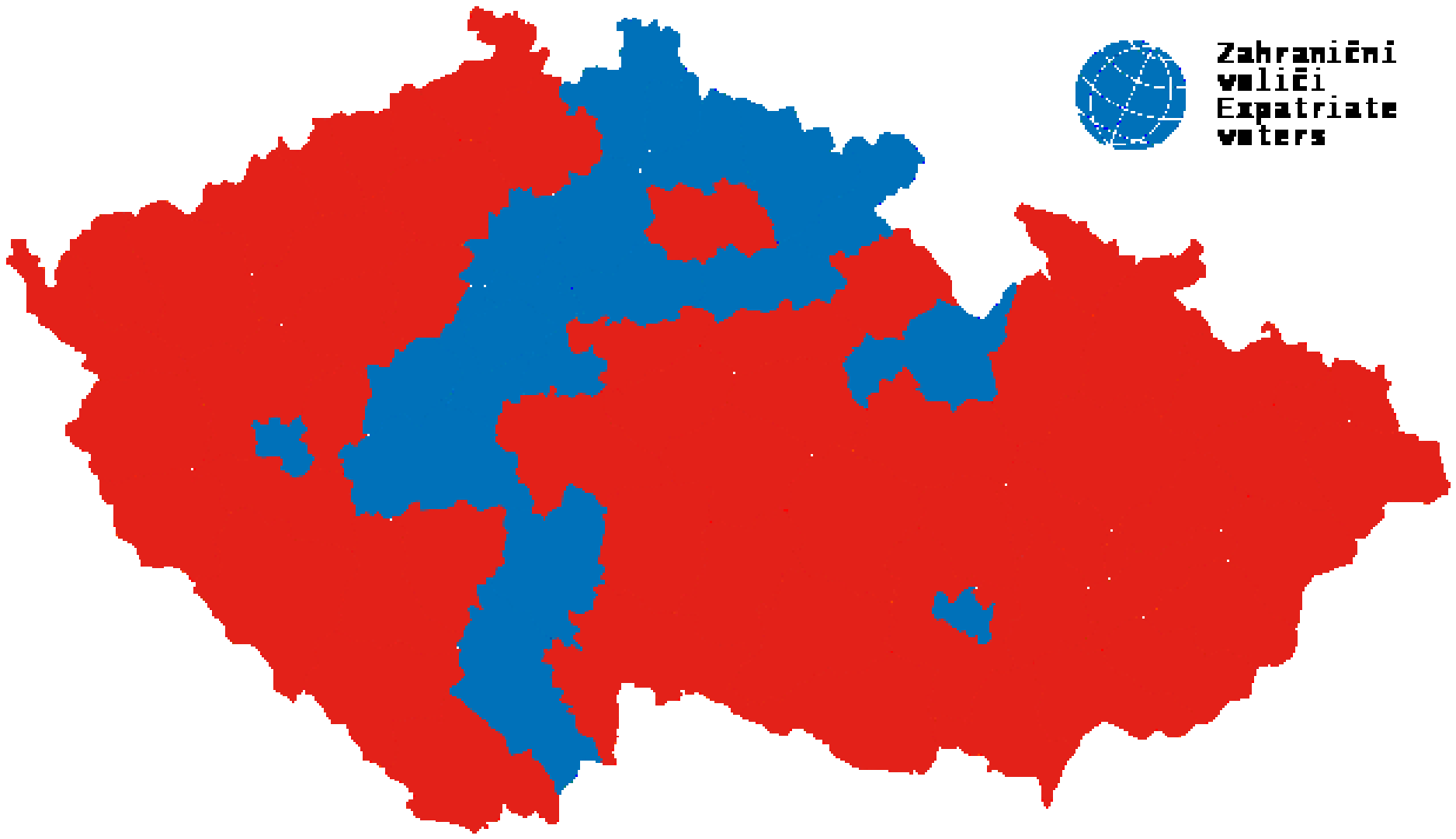
- bez UVP
- UVP
- SUVP

Marek Hilšer 8,83%



Jiří Drahoš I. 26,60%





Zahraniční
voliči
Expatriate
voters

Vzájemná asociace I. a II. Kolo

	Zeman II.	Drahoš II.
Topolánek	-0,624	0,624
Horáček	-0,439	0,446
Fischer	-0,501	0,191
Zeman I.	0,989	-0,623
Hilšer	-0,500	0,377
Drahoš I.	-0,797	0,334
Participiaption I.	-0,664	0,289
Participiaption II.	-0,614	0,253

I. a II. Kolo

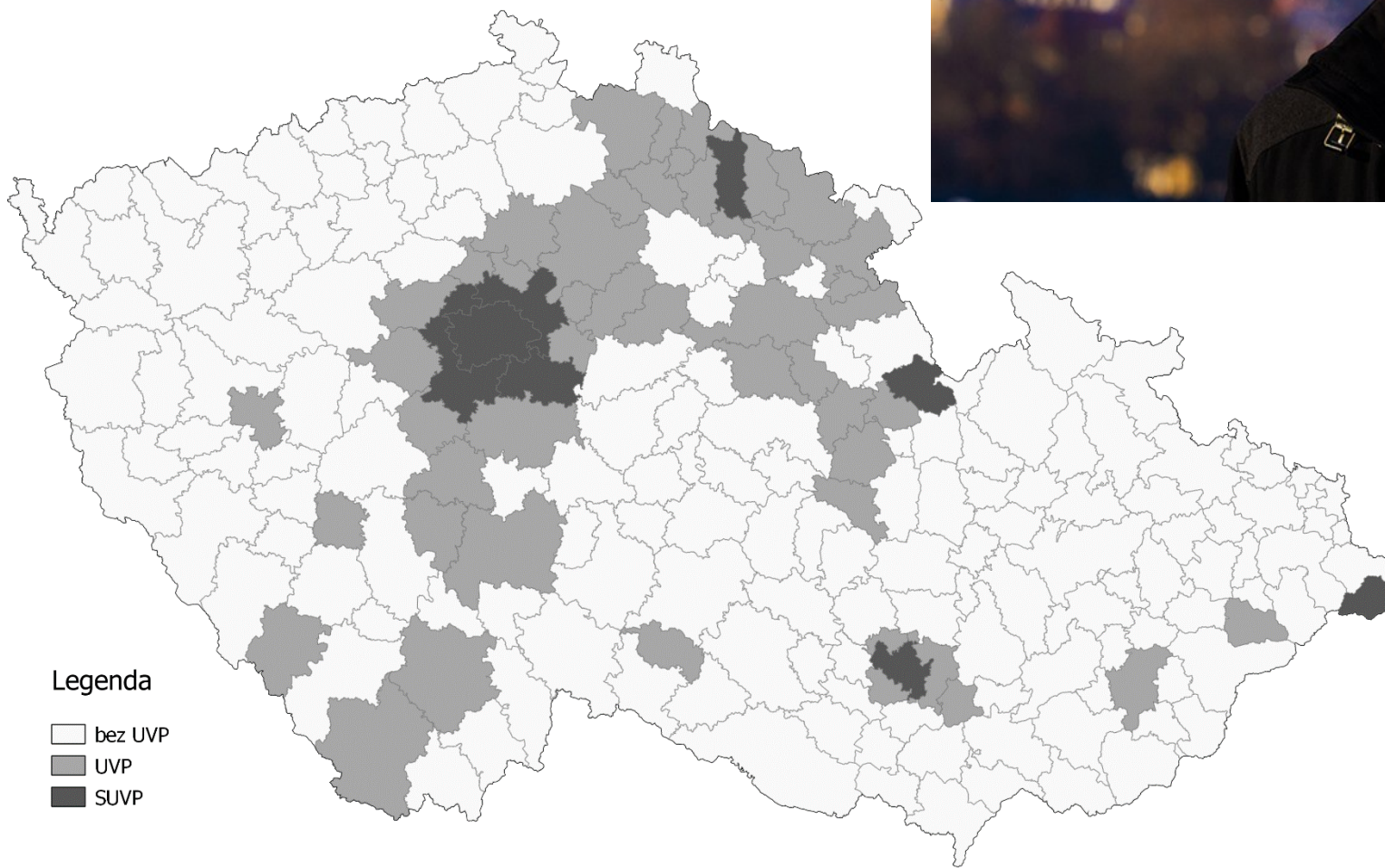
Nárůst hlasů I. a II. Kolo a podpora 2017 - Miloš Zeman

ANO	Piráti	ODS	Okamura	KSČM	ČSSD	KDU	TOP09	STAN
0,375	-0,427	-0,366	0,221	0,374	0,145	-0,061	-0,381	-0,141

Nárůst hlasů I. a II. Kolo a podpora 2017 – Jiří Drahoš

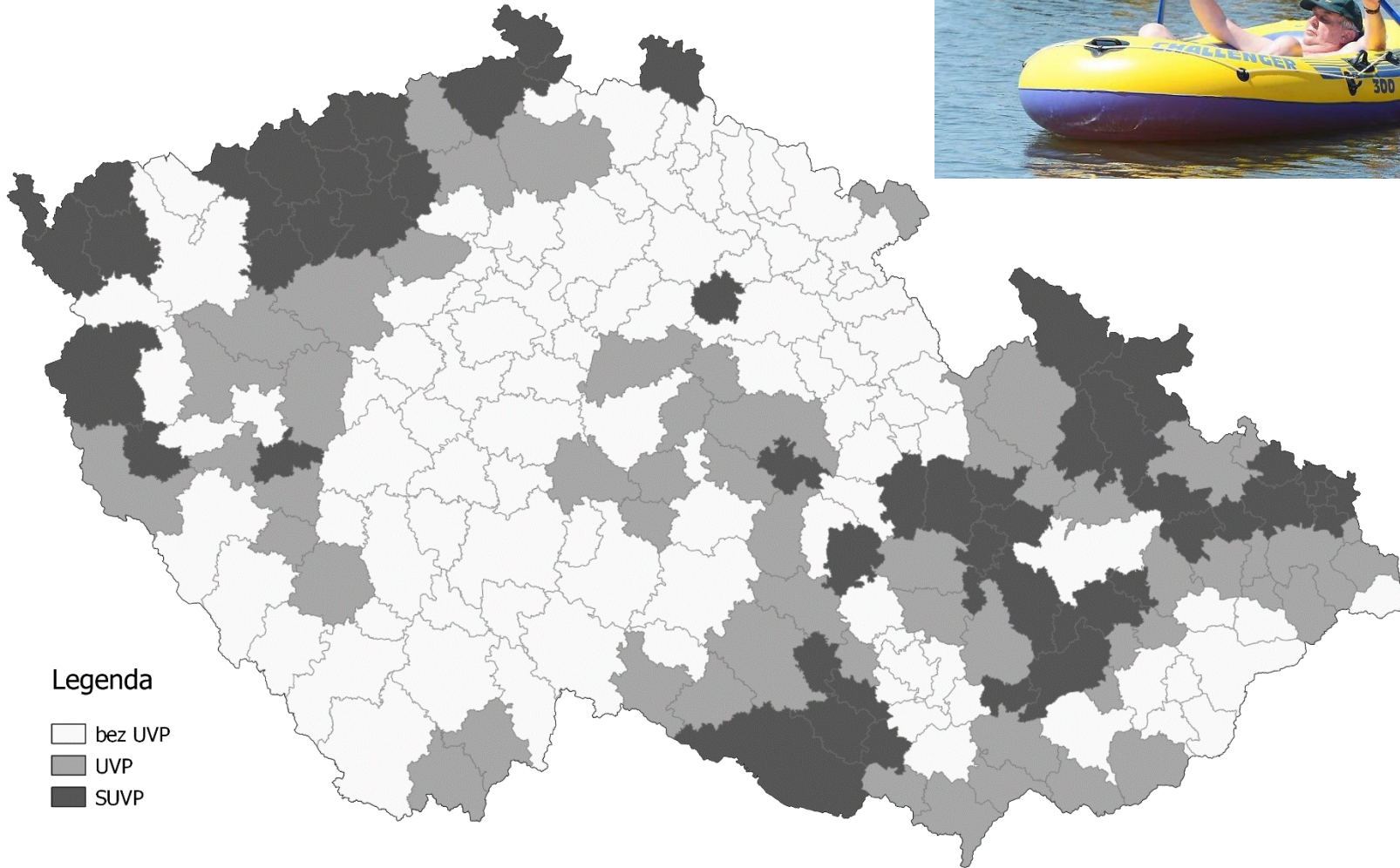
ANO	Piráti	ODS	Okamura	KSČM	ČSSD	KDU	TOP09	STAN
-0,683	0,722	0,768	-0,580	-0,599	-0,502	0,037	0,696	0,403

Jiří Drahoš II. 48,63%



Miloš Zeman II.

51,36%



2023

	Hlasy I.	% I.	Hlasy II.	% II.
Pavel Fischer	376 705	6,75		
Jaroslav Bašta	248375	4,45		
Petr Pavel	1 975 056	35,40	3 359 151	58,32
Tomáš Zima	30 769	0,55		
Danuše Nerudová	777 080	13,92		
Andrej Babiš	1 952 213	34,99	2400046	41,67
Karel Diviš	75 475	1,35		
Marek Hilšer	142 912	2,56		

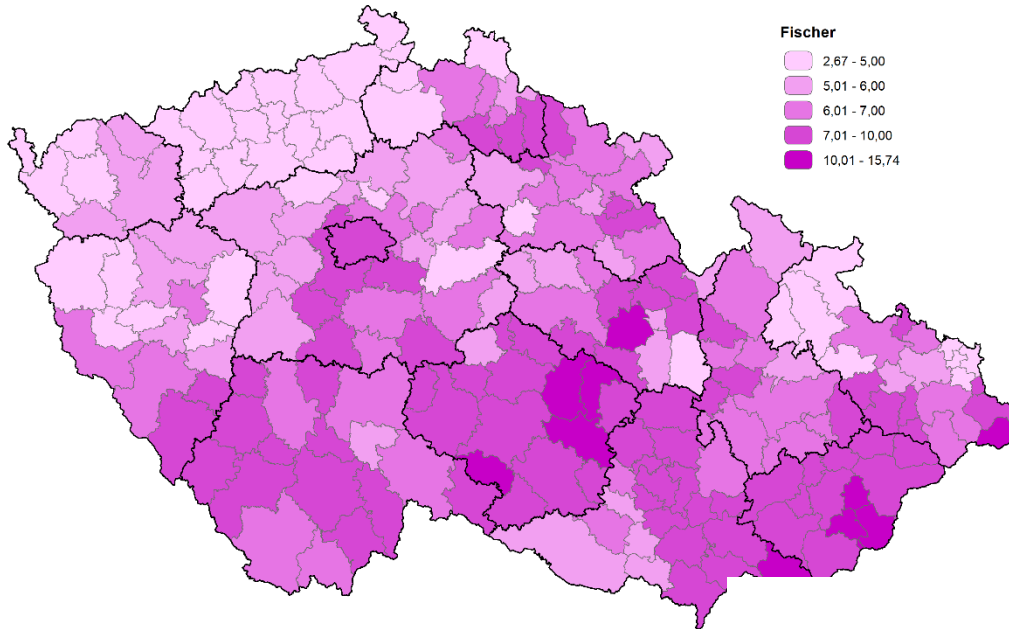
Vzájemné souvislosti 2023

	Kvalita	Fischer	Bašta	Pavel 1	Nerud.	Babiš 1	Účast
Kvalita	1	0,416	-0,356	0,649	0,637	-0,751	0,722
Fischer	0,416	1	-0,070	0,136	0,664	-0,589	0,613
Bašta	-0,356	-0,070	1	-0,522	-0,232	0,351	-0,043
Pavel 1	0,649	0,136	-0,522	1	0,382	-0,844	0,514
Nerud.	0,937	0,664	-0,232	0,382	1	-0,752	0,781
Babiš 1	-0,751	0,586	0,351	-0,844	-0,752	1	-0,758
Účast	0,722	0,613	-0,404	0,514	0,781	-0,758	1

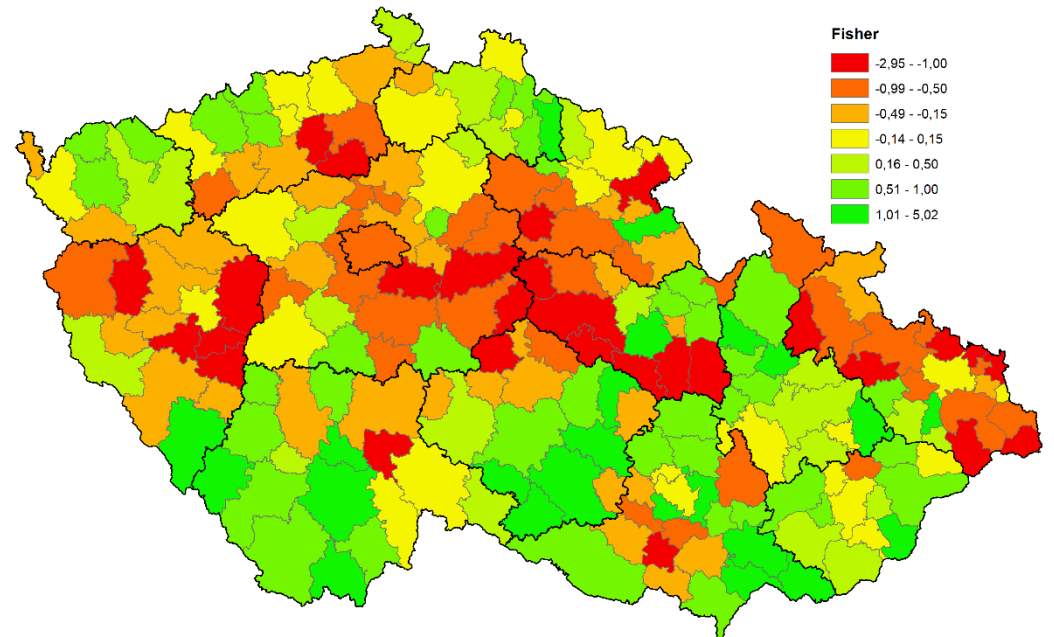
Vzájemné souvislosti 2021/2023

	Fischer	Bašta	Pavel 1	Nerud.	Babiš 1	Účast 1
ANO	-0,312	0,253	-0,751	-0,785	0,954	-0,739
SPOLU	0,651	-0,379	0,701	0,735	-0,885	0,740
PiroStan	0,113	-0,429	0,765	0,325	-0,676	0,400
SPD	-0,394	0,724	-0,709	-0,645	0,755	-0,757
KSČM	-0,259	0,153	-0,533	-0,205	0,518	-0,178
ČSSD	0,329	-0,142	-0,170	0,289	-0,048	0,299

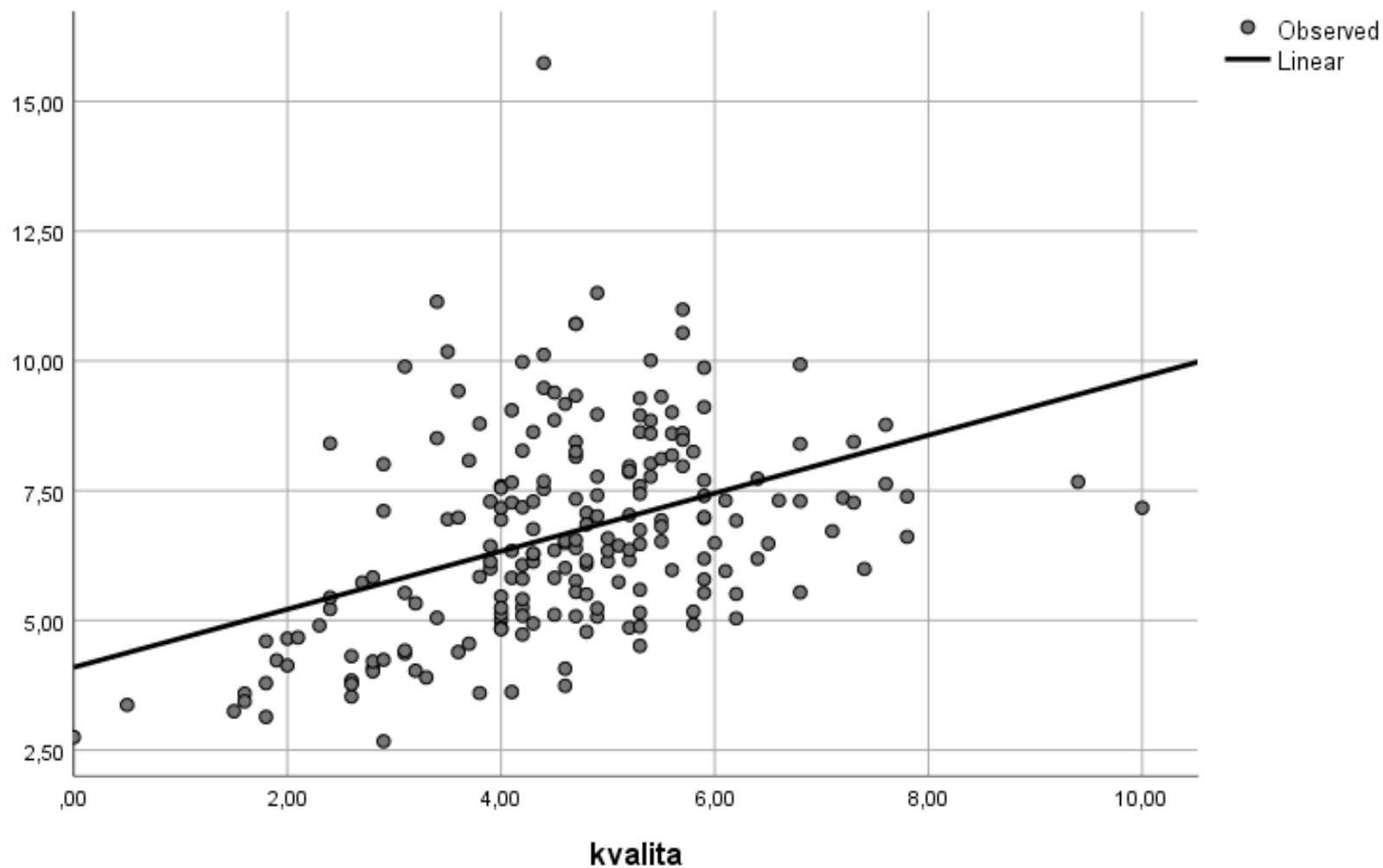
Pavel Fischer 2023



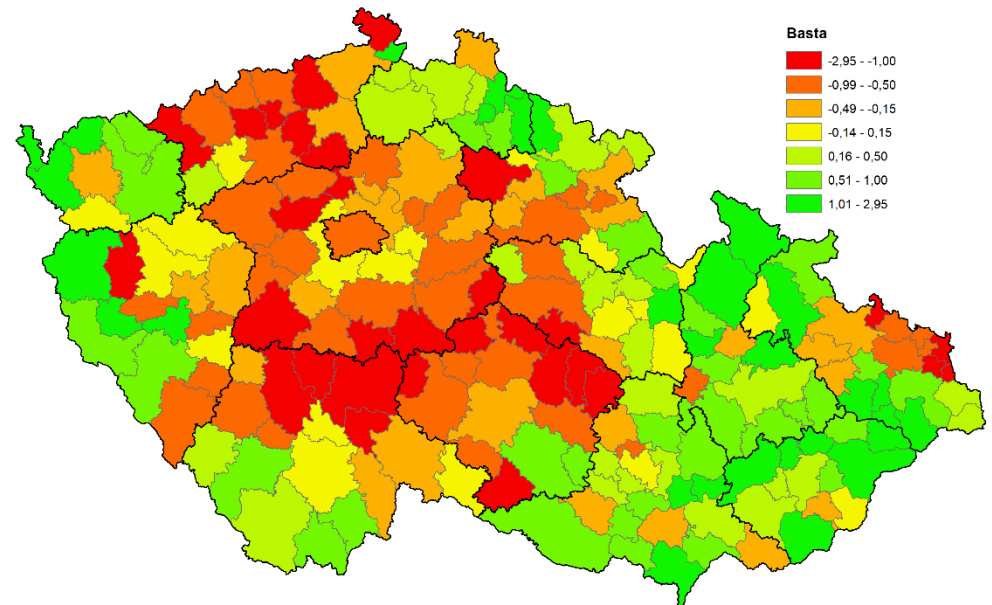
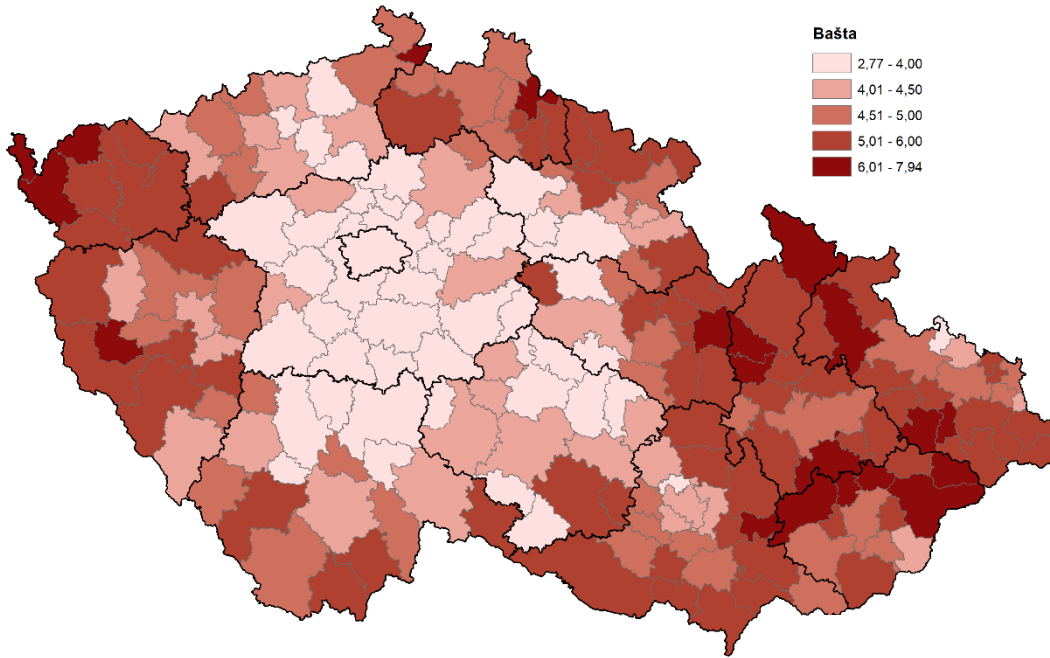
Velké Meziříčí	10,71
Telč	10,72
Litomyšl	10,99
Veselí nad Moravou	11,14
Nové Město na Moravě	11,31
Valašské Klobouky	15,74



Pavel Fischer a kvalita života

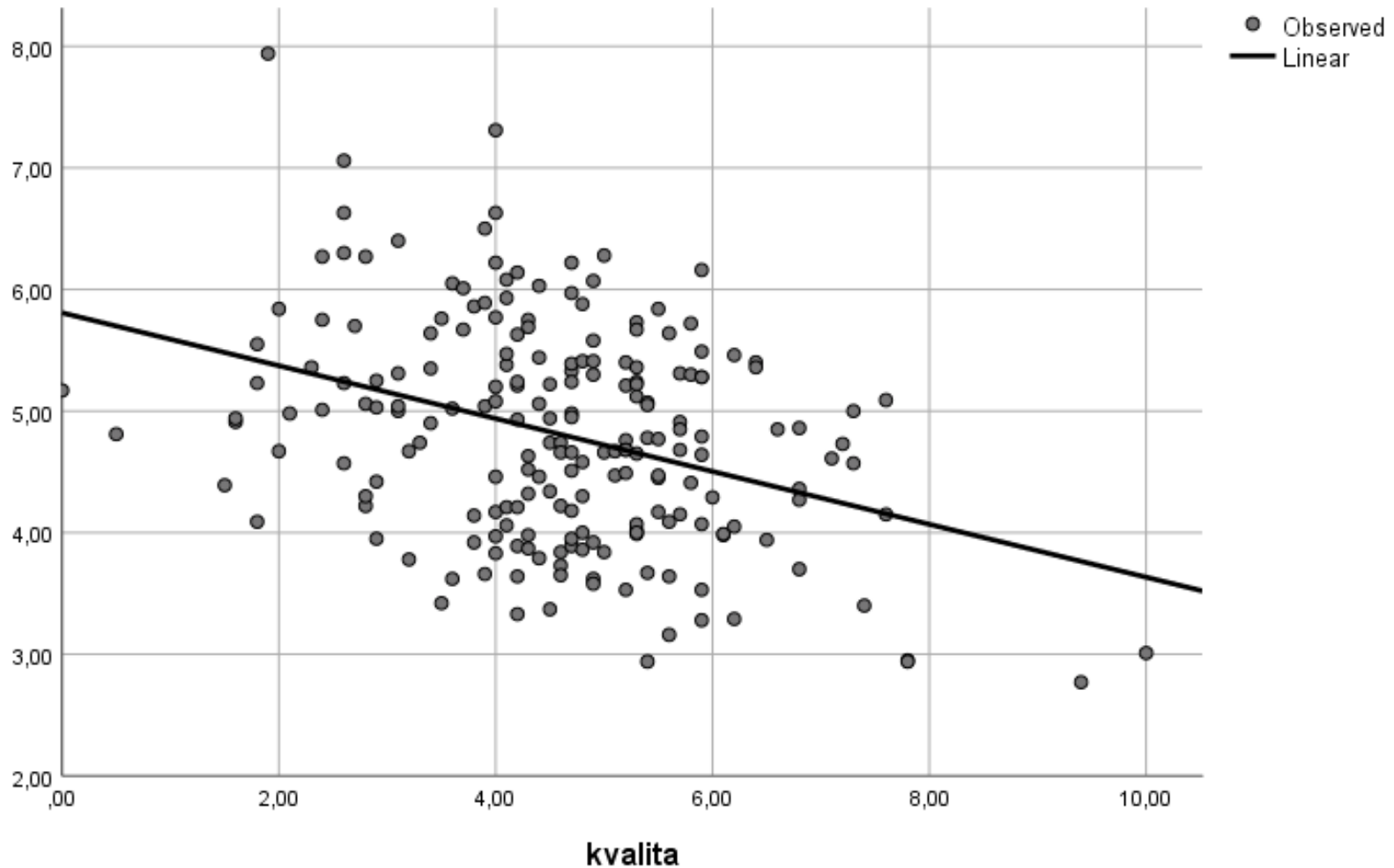


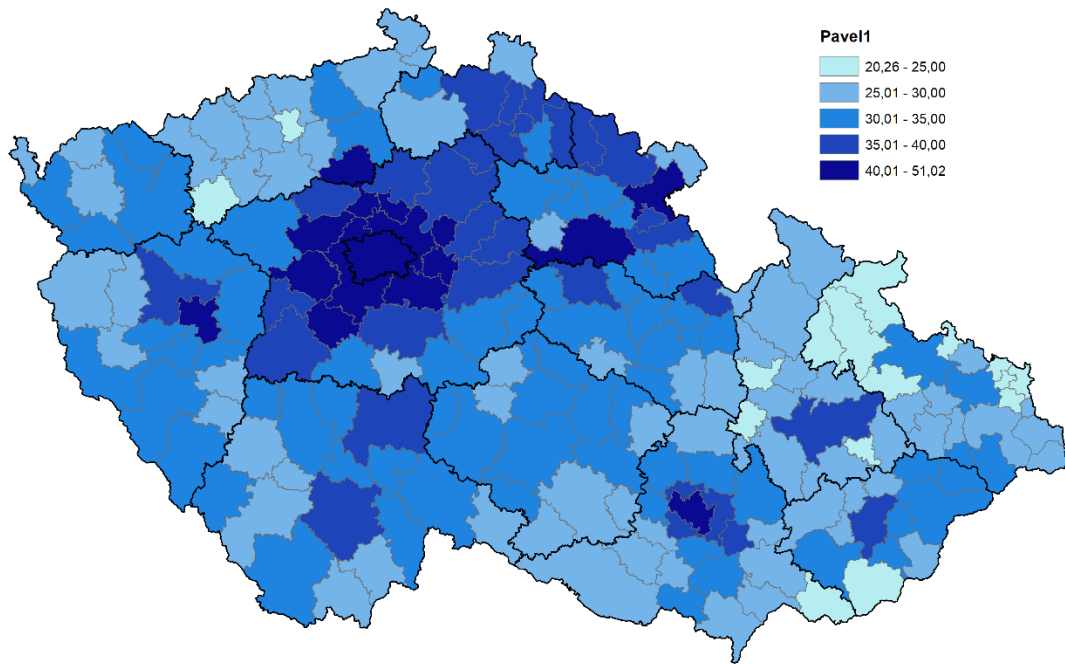
Jaroslav Bašta



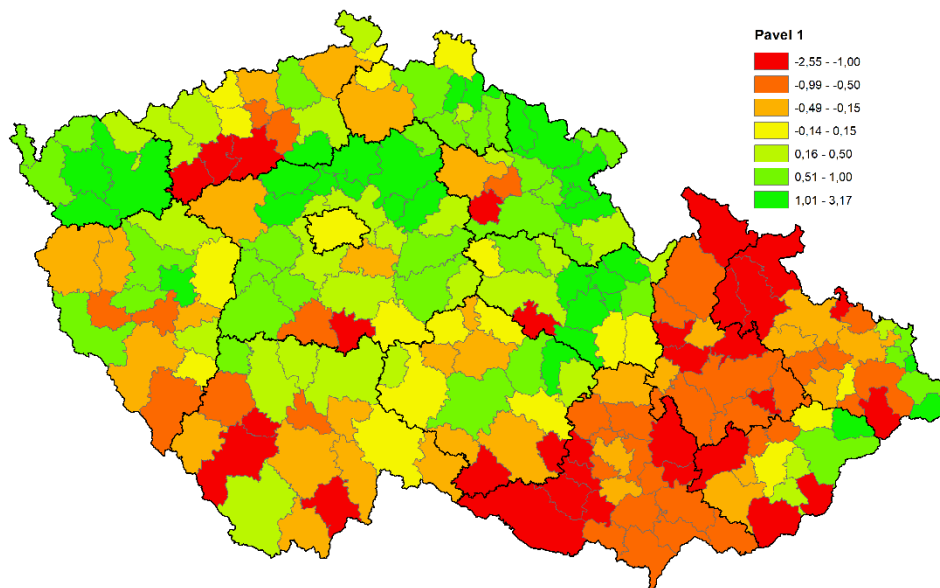
Bystřice pod Hostýnem	6,50
Aš	6,63
Kroměříž	6,63
Bruntál	7,06
Jeseník	7,31
Kraslice	7,94

Jaroslav Bašta a kvalita života

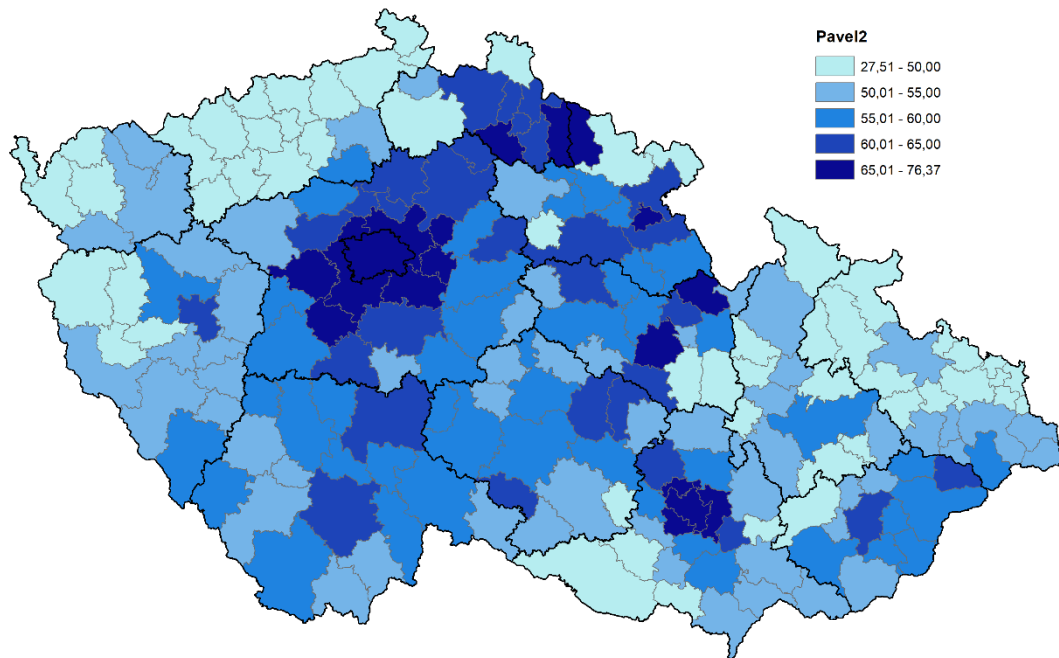




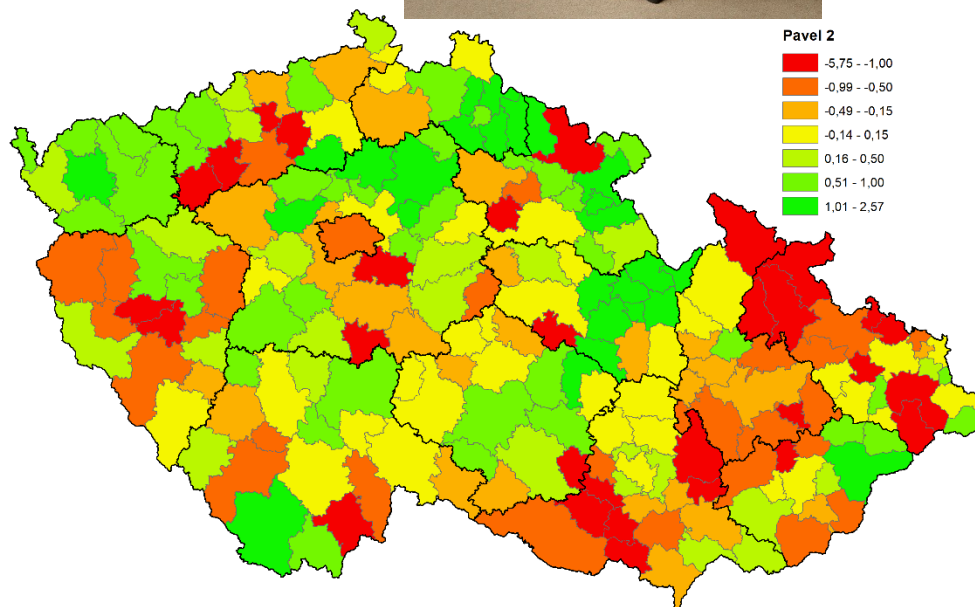
Brno	42,57
Beroun	43,21
Brandýs nad L. St. Boleslav	48,52
Říčany	48,57
Černošice	51,01
Praha	51,02



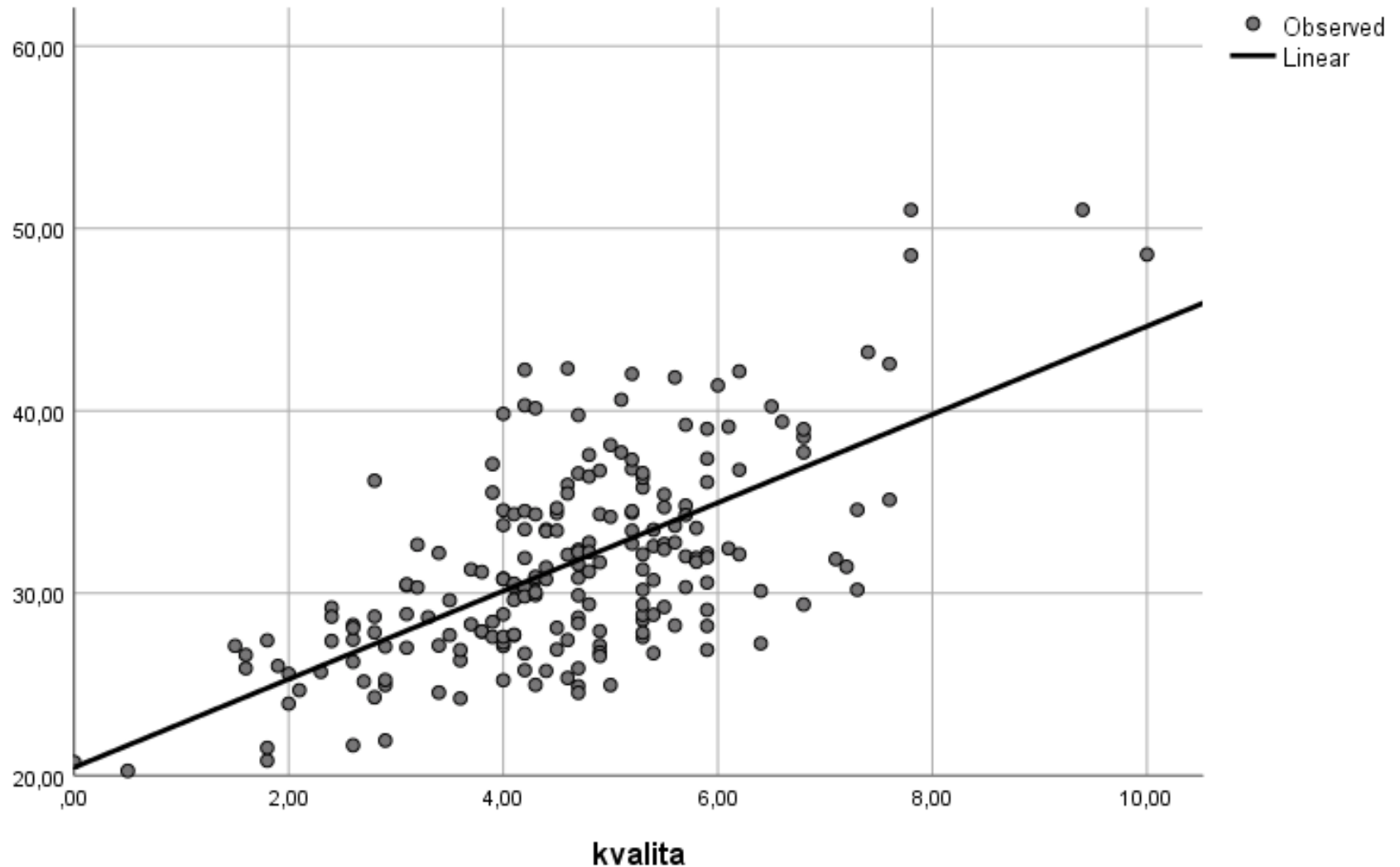
Petr Pavel II.



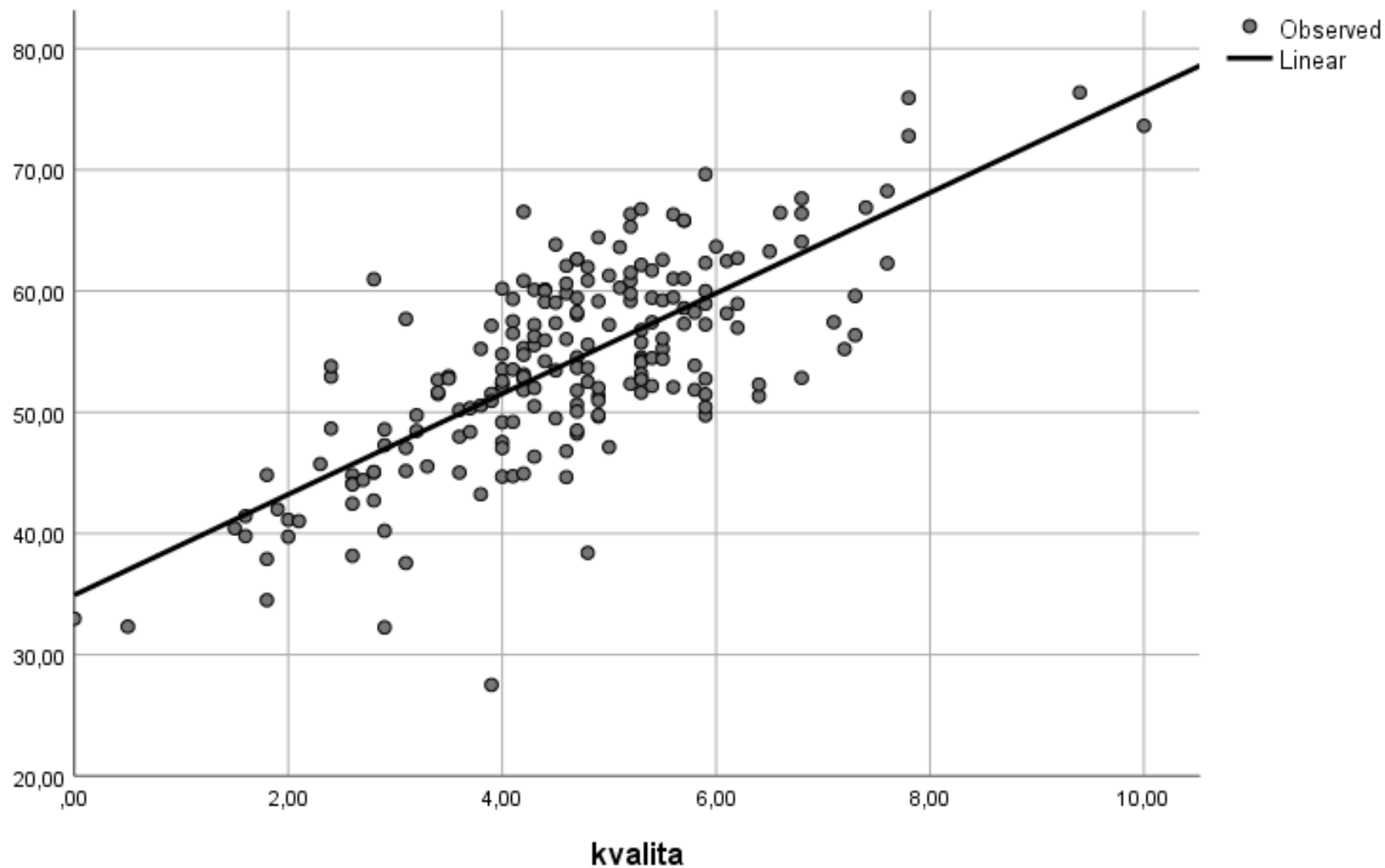
Šlapanice	67,63
Brno	68,24
Jilemnice	69,63
Brandýs nad L. St. Boleslav	72,79
Říčany	73,63
Černošice	75,93
Praha	76,37



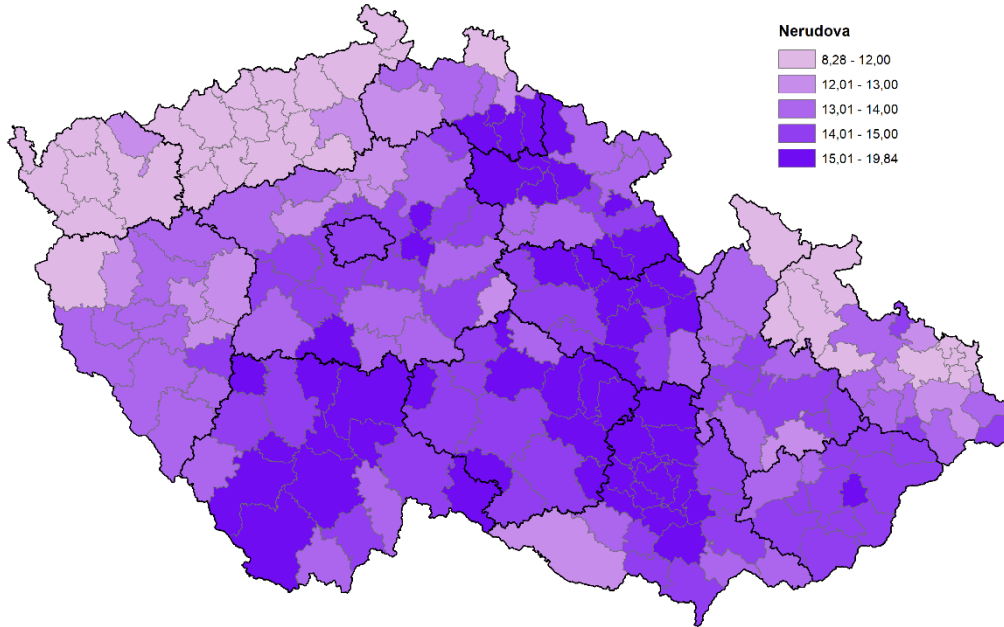
Petr Pavel I. a kvalita života



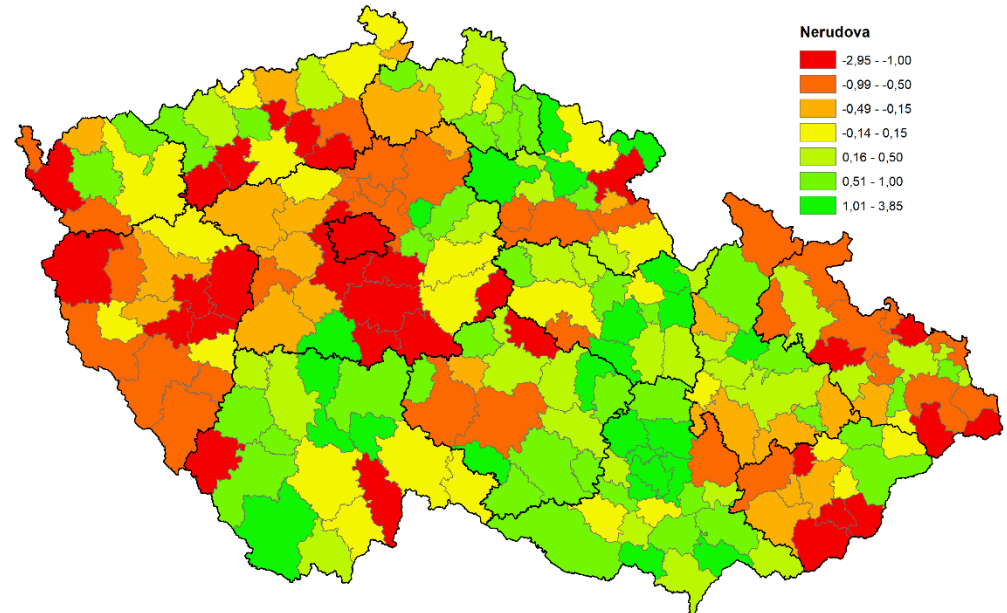
Petr Pavel II. a kvalita života



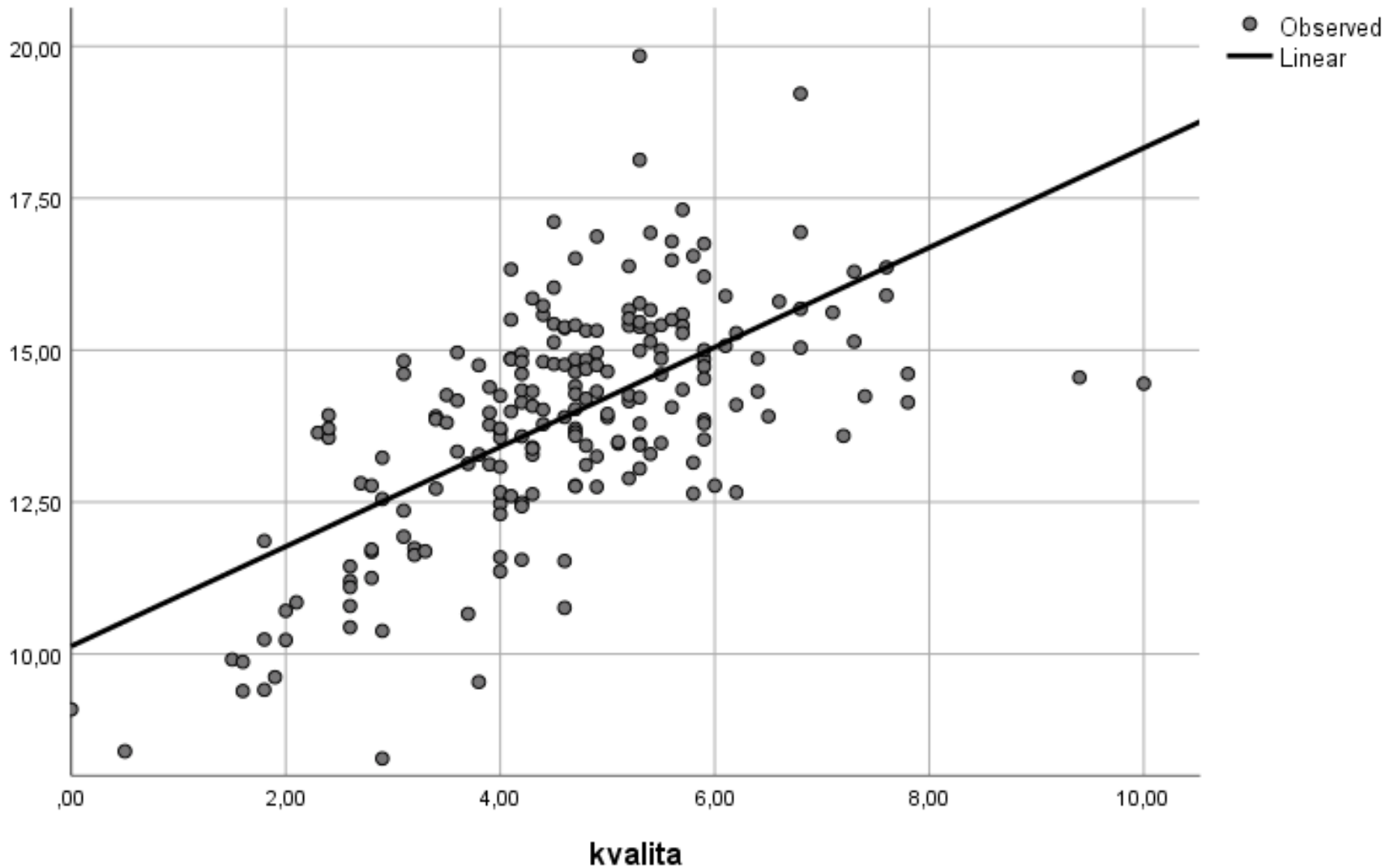
Danuše Nerudová



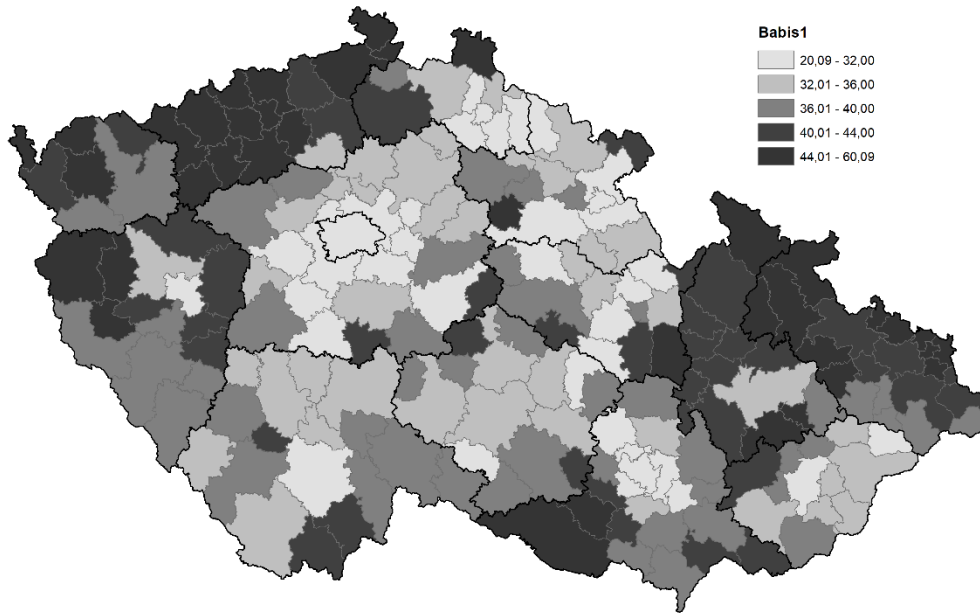
Šlapanice	16,94
Sedlčany	17,11
Litomyšl	17,31
Žamberk	18,13
Kuřim	19,22
Polička	19,84



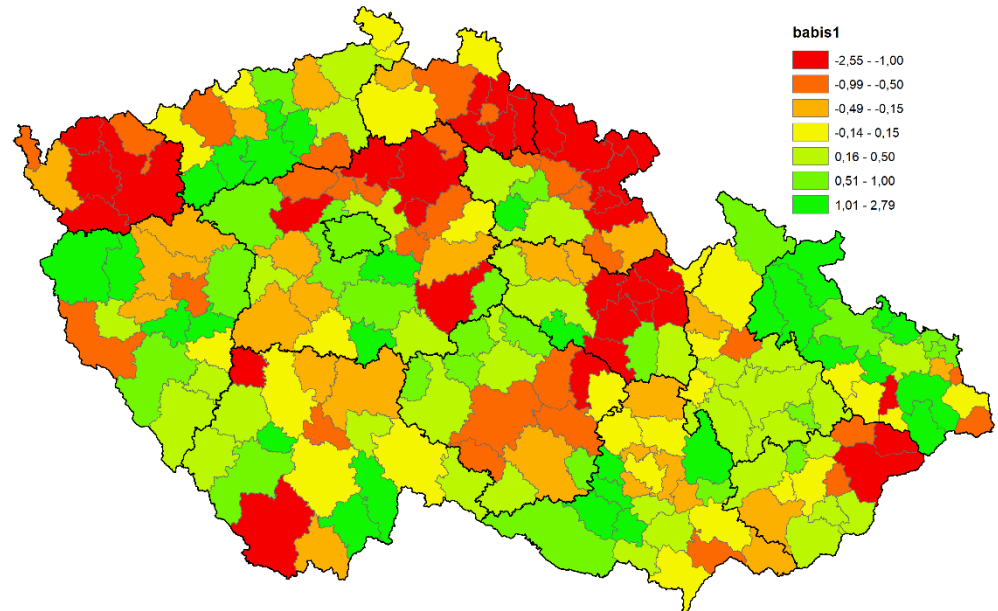
Danuše Nerudová a kvalita života



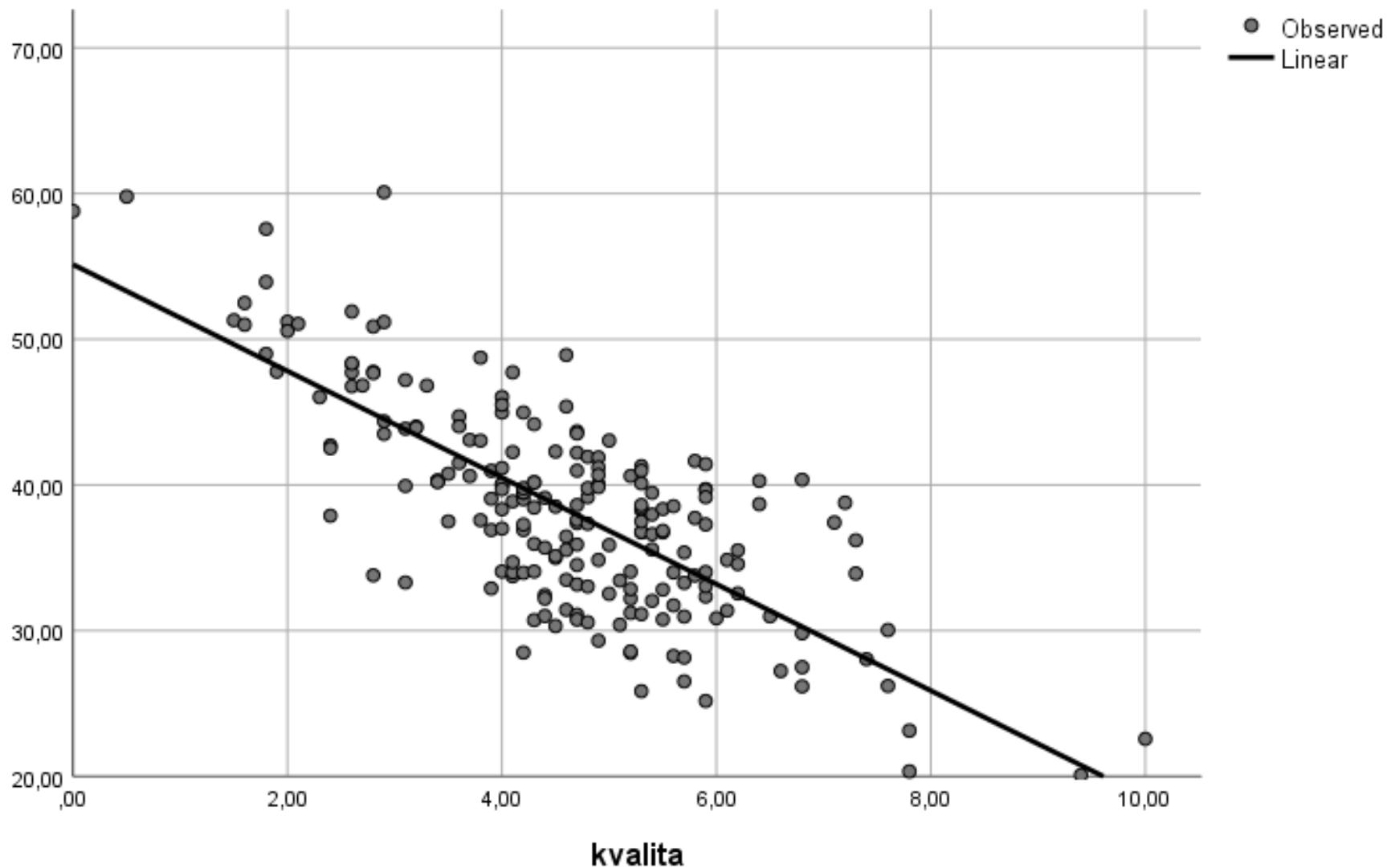
Andrej Babiš I. (II.)



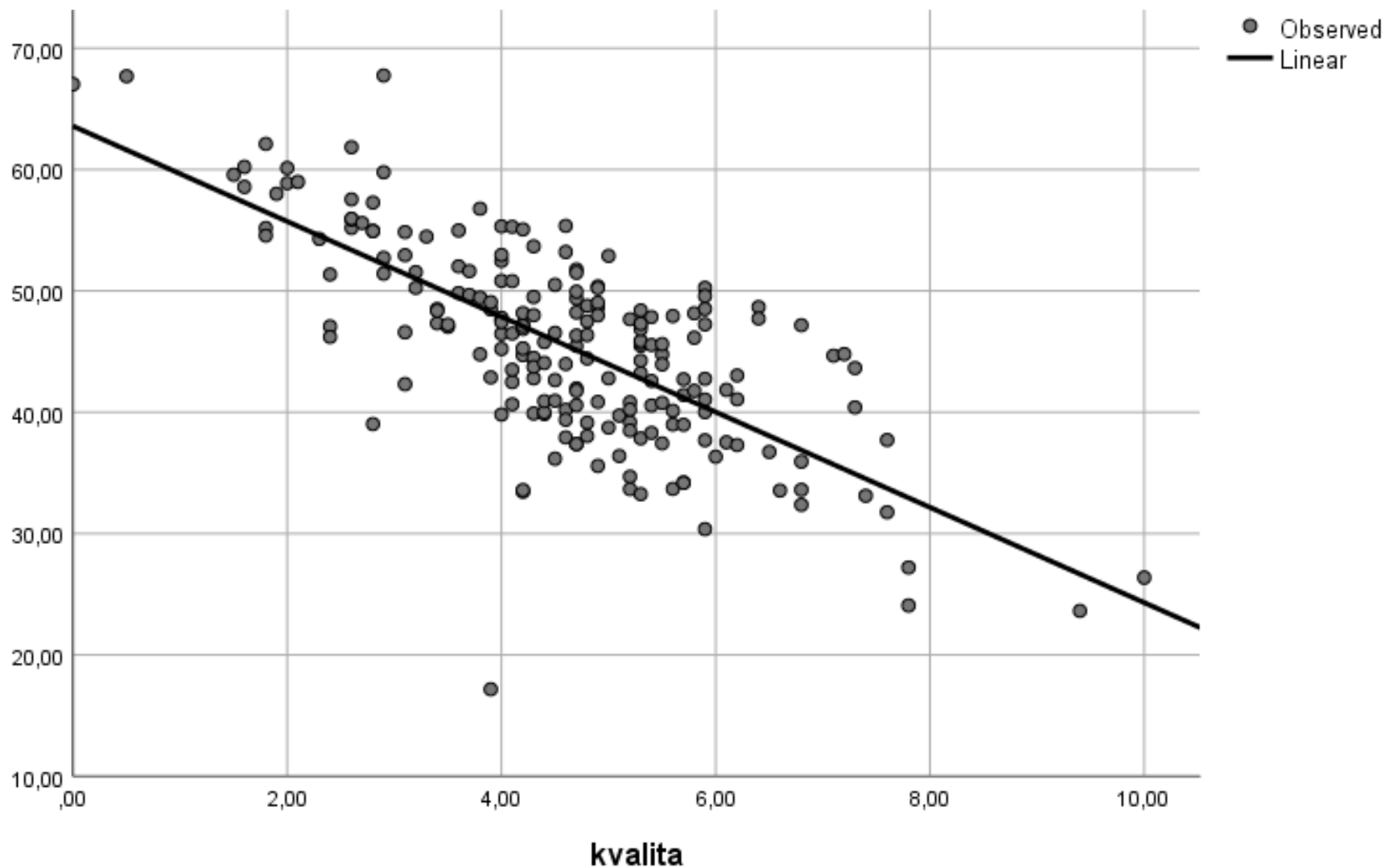
Žatec	52,49	60,22
Bruntál	51,90	61,84
Vítkov	53,93	62,11
Orlová	58,79	67,03
Karviná	59,79	67,69
Bílina	60,09	67,75



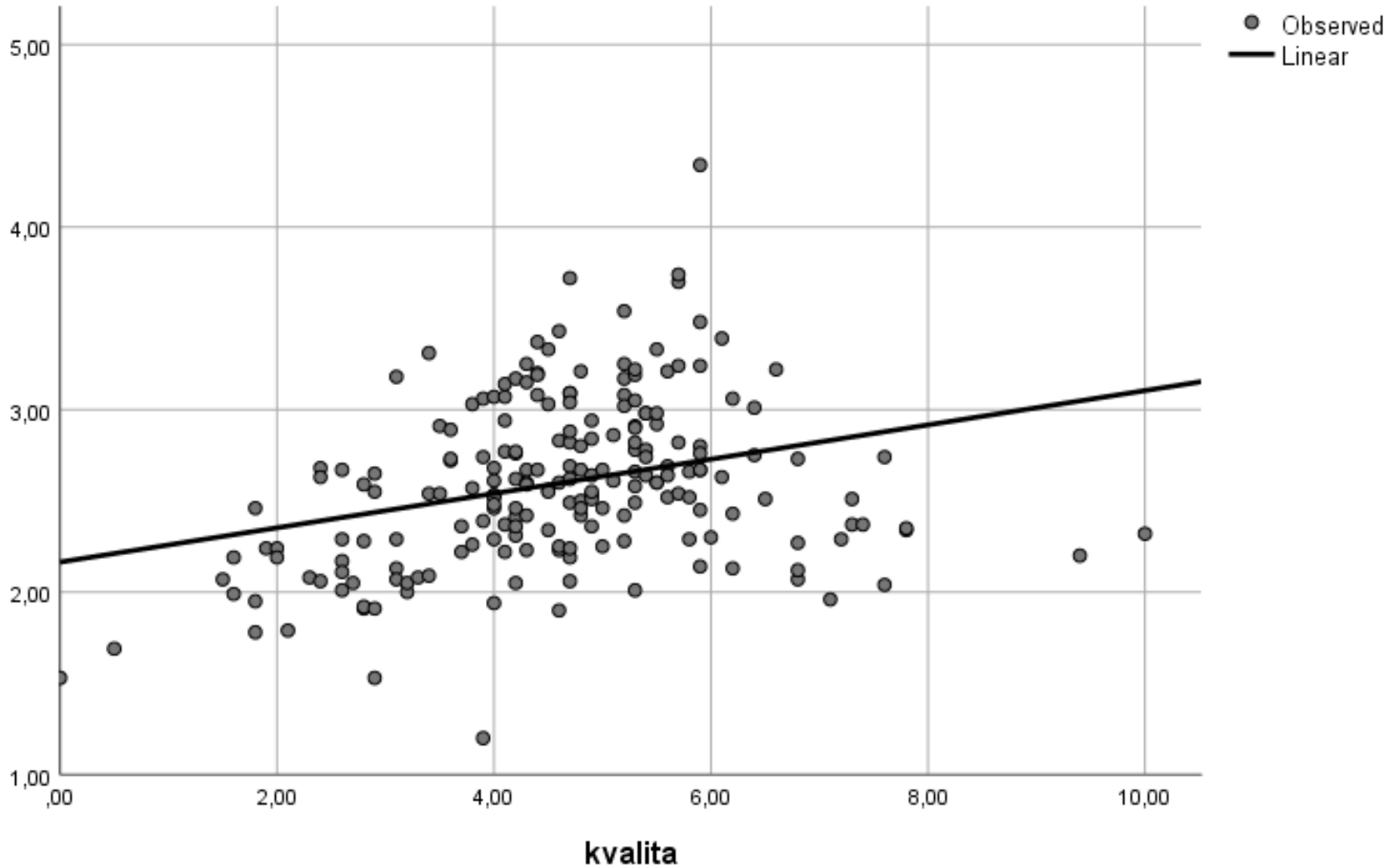
Andrej Babiš I. a kvalita života



Andrej Babiš II. a kvalita života



Marek Hilšer a kvalita života



Vzájemné souvislosti 2023

	Pavel II. Kolo	Babiš II. Kolo
Fischer	0,523	-0,499
Bašta	-0,429	0,429
Pavel I.	0,831	-0,874
Nerudová	0,681	-0,680
Babiš I.	-0,931	0,961
Hilšer	0,446	-0,328
Účast II. Kolo	0,125	-0,125
Účast I. Kolo	0,721	-0,726

Závěrem

- Prezidentské volby – rozdělená země ?
- Hlavní cleavage pravice/levice (město/venkov)
- Větší město/menší město a venkov
- Přítomnost příměstských oblastí
- Historický kontext – Sudety
- Méně významná – socioekonomická cleavage?