

THE SOUND AND SMELL OF THE LANDSCAPE

Landscapes are often associated with sounds and sometimes smell

- Towns have a lot of human made sound and smells**
- The rural country side might have other sounds and smells**
- Interviewing people about their emotions they often tell that smell and sounds can trigger off reactions**
- Often smell, sound and visual experiences are combined – sometimes to the extent that it is hard to separate**

In horticulture therapy the combination of smell, sounds and visual experiences are often combined. Results are hard to measure , but seem to be promising

Eero Järnefelt (1863 – 1937)

Pond Water Crowfoot

Atenum Art Museum, Helsinki



Arthur Dove

Morning Sun (1935)

The Philips Collection, Washington



Akseli Gallen-Kallela (1865 – 1931)

The Great Black Woodpecker (1892 – 1894)

Private Collection



Harald Sohlberg (1869 -1935)

Flower Meadow in the North (1905)

The National Museum of Art, Architecture and Design, Oslo



Pekka Halonen (1865 – 1933)

Winter Landscape (1907)

Hämeenlinna Art Museum, Finland



Pekka Halonen (1865 – 1933)

Washing on the ice (1900)

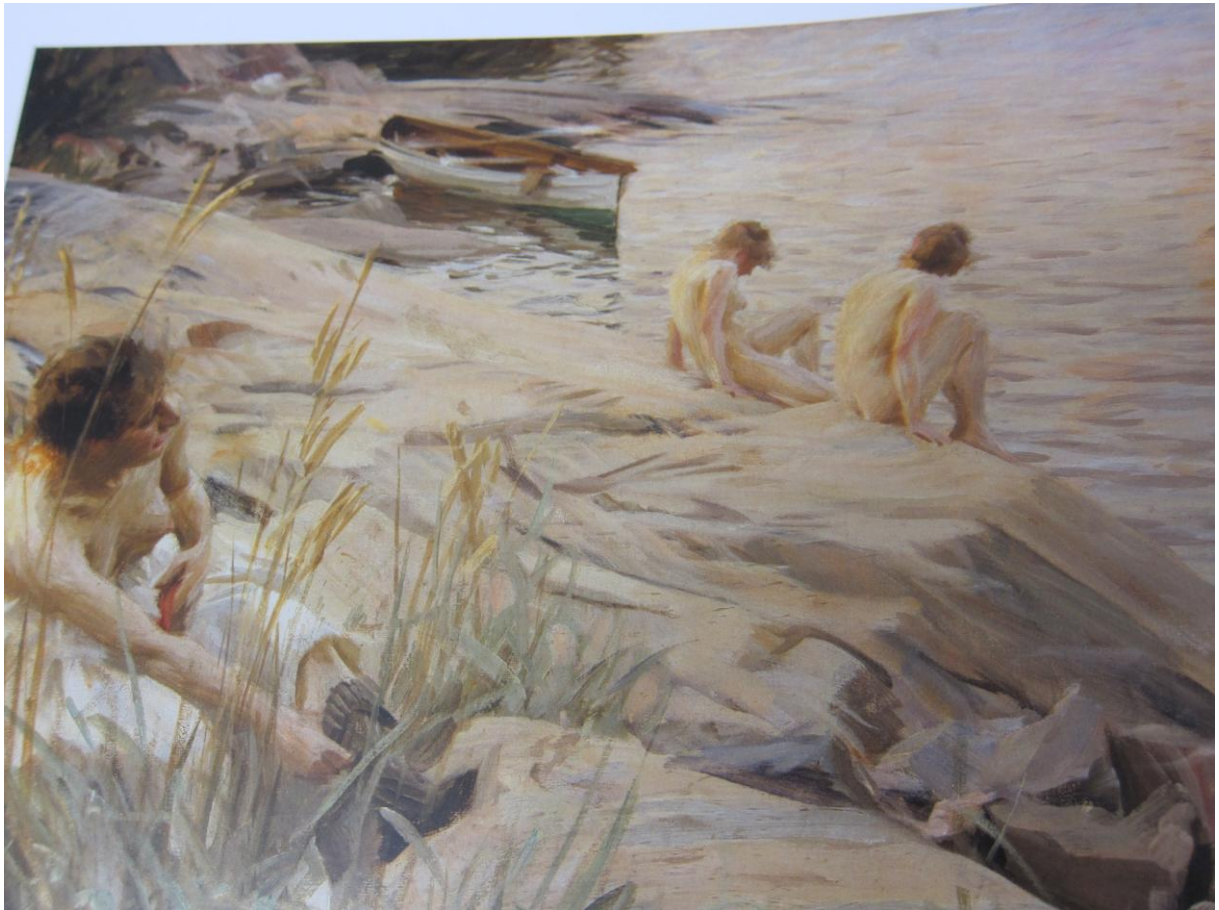
Atenum Art Gallery, Helsinki



Anders Zorn (1860 – 1920)

Girls bathing in the open air (1890)

Atenum Art Museum Helsinki



Harald Slott-Møller (1864 – 1937)

Danish landscape (1891)

Private collection deposited with Statens Museum for Kunst, Copenhagen



Hugo Simberg (1873 -1917)

Spring evening, when the ice is melting (1897)

Ateneum Art Museum, Helsinki



Harald Sohlberg (1869 -1935)

Night Glow

The National Museum of Art, Architecture and Design, Oslo



Harald Sohlberg (1869 - 1935)

Winter Night in the Mountains (1911)

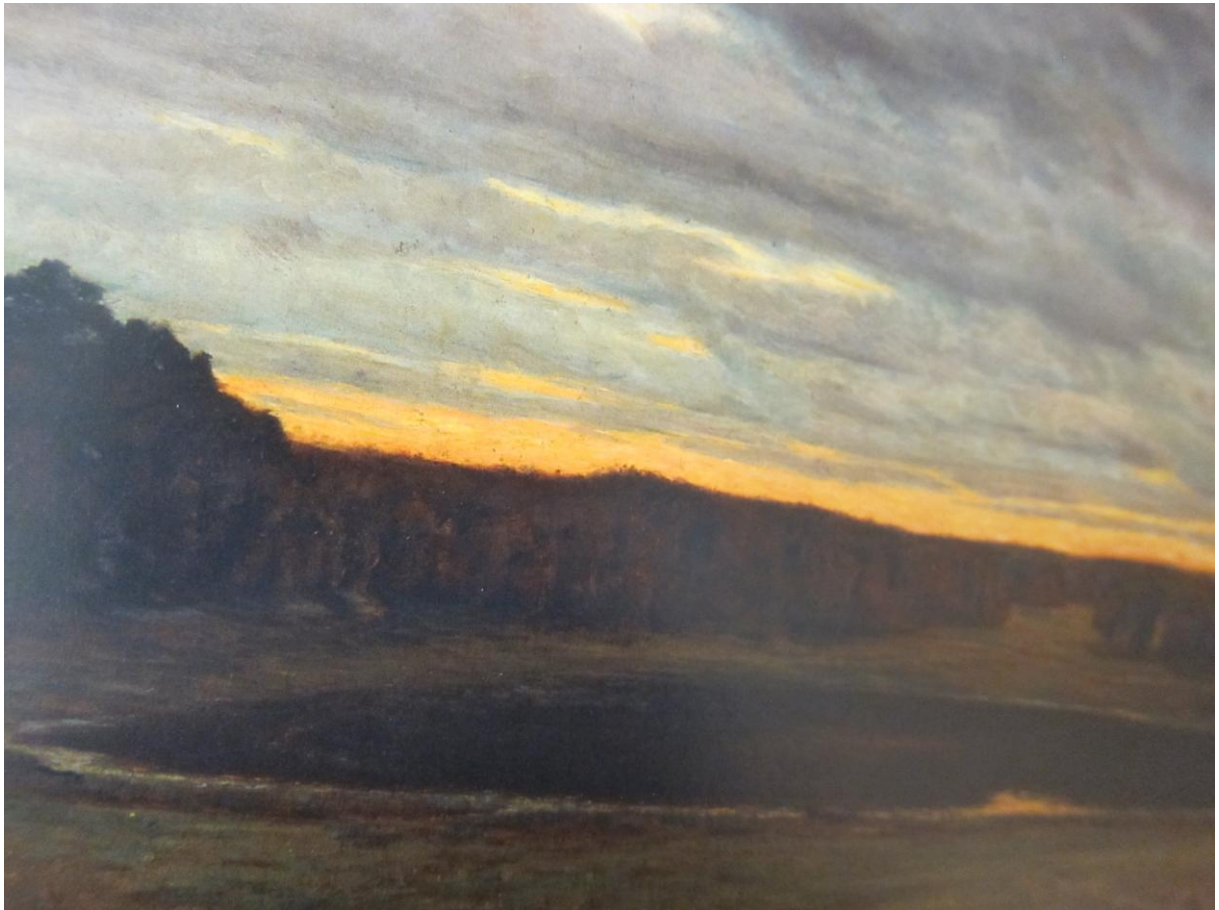
Private Collection



Prince Eugen (1865 – 1947)

Calm Water (1901)

The National Museum, Stockholm



Thórarinn B. Thorláksson (1867 – 1924)

Mountain Stóri Dimon (1902)

National Gallery of Iceland, Reykjavik



Finnish Vallinkoski Rapids (1914)

Victor Westerholm (1860 – 1919)

Atenum Art Museum, Helsinki

