

SOCMINT

BSS476 Analýza otevřených zdrojů

Ondřej Rojčík

Obsah

Facebook

- Vyhledávání
- Extrakce dat
- Analytické nástroje

Twitter

- Vyhledávání: geolokace a čas
- Analytika
- Analytické nástroje

Facebook

Nejrozšířenější sociální síť

- Více než 2.1 mld. aktivních uživatelů měsíčně (září 2017)
- Průměrně strávený čas na uživatele a den je 20 minut (2017)
- 270 milionů falešných profilů...(2017)
- Denně nahráváno přes 300 milionů fotek (2014)
- Přes 5 bilionů sdílení denně (2016)

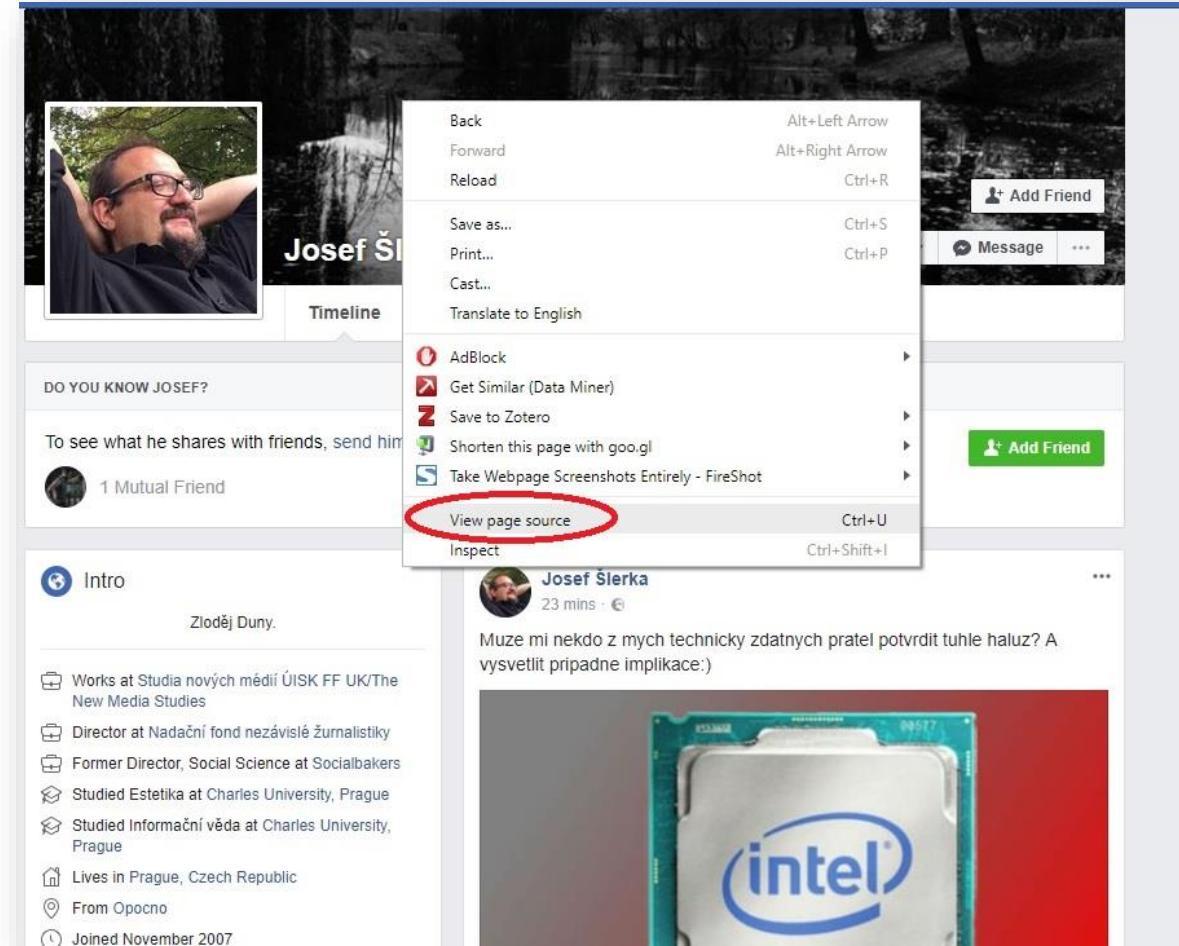
Rychle se měnící podmínky

- Data přístupná jeden den, nemusí být přístupná další den
- Je třeba mít trpělivost
- A používat širokou škálu technik

FB Profile ID

FB Profile ID

- View page source/Zdrojový kód stránky
- Ctrl+F *profileid=*



Vyhledávání manipulací URL

Za pomoci ***FB User Number***

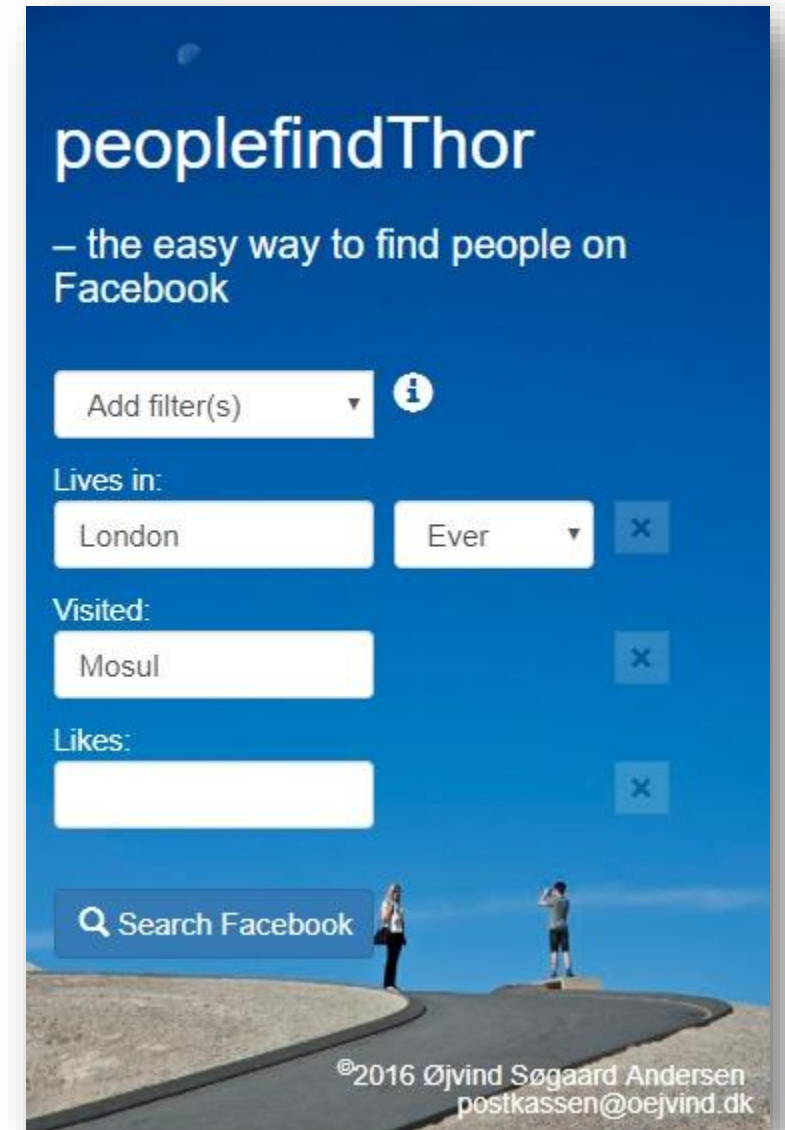
- <https://www.facebook.com/search/100001269187894/places-visited>
- <https://www.facebook.com/search/100001269187894/recent-places-visited>
- <https://www.facebook.com/search/100001269187894/photos-of>
- <https://www.facebook.com/search/100001269187894/photos-liked>
- <https://www.facebook.com/search/100001269187894/photos-by>
- <https://www.facebook.com/search/100001269187894/videos>
- <https://www.facebook.com/search/100001269187894/videos-of>
- <https://www.facebook.com/search/100001269187894/events-joined>
- <https://www.facebook.com/search/100001269187894/relatives>

People Find Thor

- Vytvoří dotaz za vás
- Několik kritérií současně

URL: www.peoplefindthor.dk

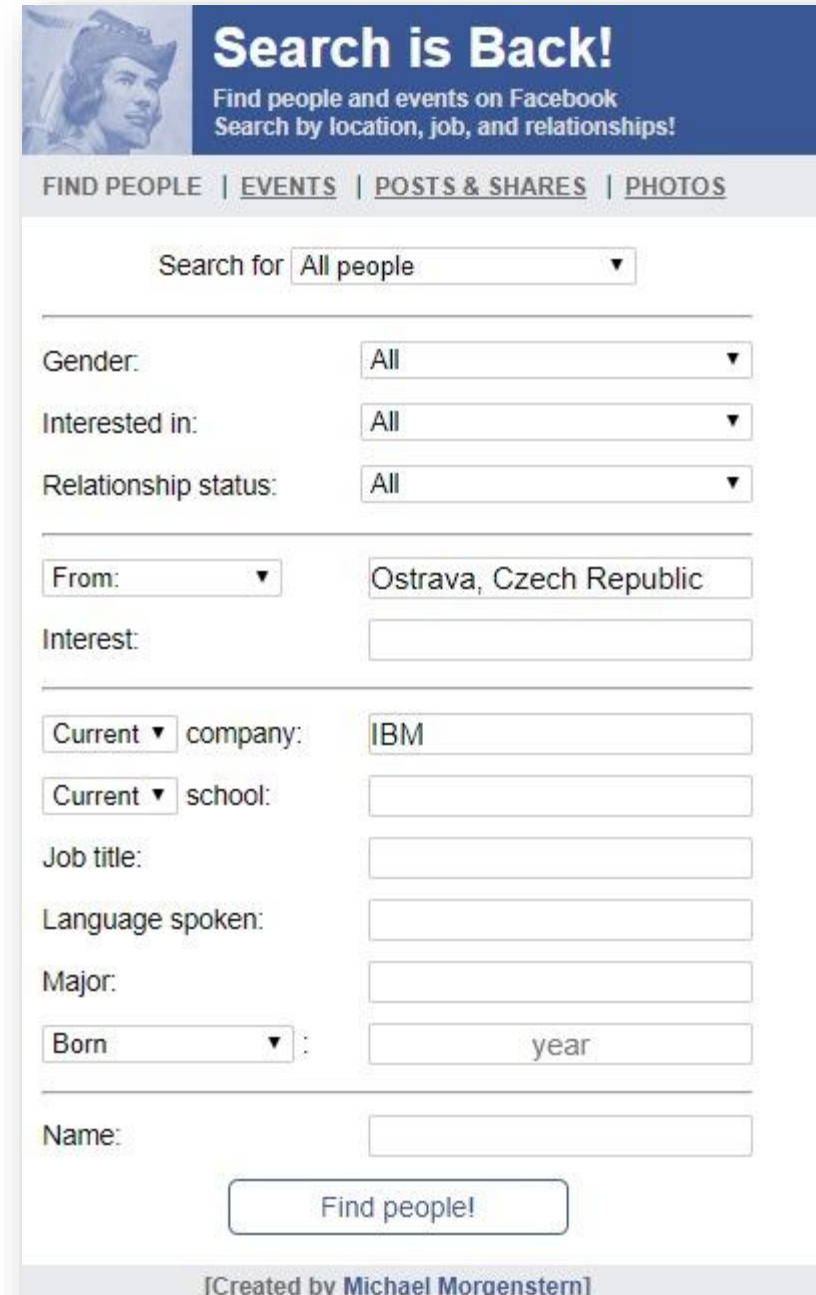
[<https://www.facebook.com/search/str/ostrava/places-named/visitors/str/brno/pages-named/residents/ever/females/str/ibm/pages-named/employees/ever/intersect>]



Search is Back

- Vyhledávání lidí, událostí, postů a fotografií
- Několik kritérií najednou

URL: <https://searchisback.com>



Search is Back!
Find people and events on Facebook
Search by location, job, and relationships!

FIND PEOPLE | EVENTS | POSTS & SHARES | PHOTOS

Search for

Gender:

Interested in:

Relationship status:

From:

Interest:

Current

Current

Job title:

Language spoken:

Major:

Born

Name:

[Created by Michael Morgenstern]

Facebook Live Stream Search

- Vyhledávač zaměřený na FB live streamy
- Výsledky mohou být nekonzistentní

URL: <http://netbootcamp.org/facebooklive.html>

The screenshot shows the 'Facebook Live Search Tool' interface. At the top, there's a navigation bar with 'net' logo and 'Facebook Live Search Tool' text. Below it are input fields for 'Your UserID' and 'Insert VideoID', and a list of search tools: Facebook Search, Website, Instagram, People, and Paste. The main content area has several sections: 'LIVE DATA', 'VIDEOS', 'RESOURCES', and 'HOW TO'. The 'LIVE DATA' section is active, showing 'Live Stream Search' with a 'Go' button and a link to 'Facebook Live Map'. Below that is 'Live Stories & Hashtags by Keyword' with a 'Keyword' input field, a 'Live Videos' dropdown, and a 'Go' button. A note says 'Keywords can include publisher's name / video description.' The 'Live Stream by Location' section has a 'City or Street Address' input field, a 'Get Lat/Long' button, and a note to 'Select "Details" or "Show map bounds" for Lat/Long.'. Below that is an 'Enter Lat/Long to Find Live Streams' section with a 'Lat, Long' input field and a 'Get Live Streams' button. The 'Videos tagged to a Location (this week)' section has a 'PlaceID' input field, a 'Go' button, and a note 'Live streams & video uploads (if tagged)'. Below that is a 'City or Business Name' input field, a 'Go' button, and a note 'Get the PageID'. The 'Past Videos by Profile' section has two 'UserID' input fields, each with a 'Go' button, and a note 'Videos with keyword "was live" (unreliable)'. Below that is a 'Name or ScreenName' input field, a 'Go' button, and a note 'Get the UserID'. At the bottom, there's an 'Example UserID, PageID, PlaceID' section with a list of examples: 'UserID for Zuckerberg: 4', 'PageID for Explore.org: 53427095333', 'PlaceID for Facebook HQ: 166793820034304', 'PlaceID for San Diego Zoo: 28896772146', and 'PlaceID for San Diego, CA: 110714572282163'. The footer of the tool says 'Facebook Live Search Tool by Bob Brasich @NetBootCamp 08/2016'.

Extrakce dat

Data Miner

- rozšíření v Chrome
- např. seznam přátel – sjeďte na konec seznamu



Navíc Save to Google Drive a Screengrab!

Další vyhledávací nástroje pro FB

Graph.tips: <http://graph.tips>

Lookup-ID: <https://lookup-id.com/facebooksearch.html>

Stalkscan: <https://stalkscan.com>

Intel Techniques: <http://inteltechniques.com/osint/facebook.html>

Facebook

Michael Bazzell

- Komplexní nástroje pro OSINT šetření
- <https://inteltechniques.com/menu.html>
- Alt: <https://netbootcamp.org/osinttools/>

INTELTECHNIQUES SEARCH TOOL

MICHAEL BAZZELL OSINT TRAINER & PRIVACY CONSULTANT

Online Training Live Training Privacy Training Tools Forum Blog Podcast Books Bio Contact

Custom Facebook Tools

Search Target Profile:

Email Address (Account by Email)
+ 1 10 Digit Cell (Account by Cell-Working)
+ 1 10 Digit Cell (Account by Cell-Cover-Testing)

FB User Name (Displays User Number)

Facebook User Number (Populate All)

Facebook User Number (Places Visited)
Facebook User Number (Recent Places Visited)
Facebook User Number (Places Checked-In)
Facebook User Number (Places Liked)
Facebook User Number (Pages Liked)
Facebook User Number (Photos By User)
Facebook User Number (Photos Liked)
Facebook User Number (Photos Of-Tagged)
Facebook User Number (Photo Comments)
Facebook User Number (Apps Used)
Facebook User Number (Videos)
Facebook User Number (Videos Of User)
Facebook User Number (Videos By User)
Facebook User Number (Videos Liked)
Facebook User Number (Video Comments)
Facebook User Number (Future Event Invitations)
Facebook User Number (Events Invited)
Facebook User Number (Events Attended)
Facebook User Number (Posts by User)
Facebook User Number (Posts by Year)
Facebook User Number (Post Comments)
Facebook User Number (Posts Tagged)
Facebook User Number (Groups)
Facebook User Number (Co-Workers)
Facebook User Number (Friends)
Facebook User Number (Followers)
Facebook User Number (Relatives)
Facebook User Number (Friends' Likes)

Facebook User Number (Run All-Must allow pop-ups)

Multiple Target Profiles:

User Number User Number (Common Details)
User Number User Number (Common Places)
User Number User Number (Common Check-Ins)
User Number User Number (Common Likes)
User Number User Number (Common Photo Tags)
User Number User Number (Common Photo Likes)
User Number User Number (Common Photo Comments)
User Number User Number (Common Video Tags)
User Number User Number (Common Video Likes)
User Number User Number (Common Video Comments)
User Number User Number (Common Events)
User Number User Number (Common Post Comments)
User Number User Number (Common Groups)

Friends' Info:

User Number Page ID (Friends by Location)
User Number Page ID (Friends by Likes)
User Number Page ID (Friends by Employee)

Facebook User Number (Photos Liked by Friends)
Facebook User Number (Photos Comments by Friends)
Facebook User Number (Photos of Friends)
Facebook User Number (Videos Liked by Friends)
Facebook User Number (Videos Comments by Friends)
Facebook User Number (Videos of Friends)
Facebook User Number (Events Attended by Friends)
Facebook User Number (Apps Used by Friends)
Facebook User Number (Posts by Friends)
Facebook User Number (Post Comments by Friends)
Facebook User Number (Posts Tagged with Friends)
Facebook User Number (Check-In by Friends)

Additional Information:

User Number (Keyword by User)
Facebook User Name (Pipl API Info)
Facebook User Name (Wayback Archives)

Locate Target Profile:

People named
People who work at
People who worked at
People who like
People who live in
People who lived in
School attended
People who visited
People who live in and like
People who live in birth year
People who live in and work at
People who live in and worked at
People named who live in
People named who lived in
People named who like
People named birth year
People named between age and
People named who work at
People named who worked at
People who like birth year
People who like and work at
People who like and worked at
Multiple Variables:
Name

Gender Search:
 Males Females
who live in and like
 Males Females
who live in with birth year
 Males Females
who live in and work at
 Males Females
who live in and worked at
Detailed Search:
Posts about
Keywords
People that visited (Page ID Number)
People that checked in to (Page ID Number)
People that like (Page ID Number)
Employees of (Page ID Number)
Photos from (Page ID Number)
Videos from (Page ID Number)
Posts from (Page ID Number)
Event
Group Members (GroupID)
Viewer Locations (Video Stream ID)(Must Log Out)
Video Stream Download (Video Stream ID)
Video Data: ALL / Level 0 / Level 1 / Level 2
Additional Options:
[Net Boot Camp](#)

Stáhnutí členů FB skupiny

- Na stránce FB Skupiny přes pravý klik “Zobrazit zdrojový kód stránky”
- Přeš Ctrl + F (nebo Command + F na Mac) hledejte “fb://group” pro identifikaci ID skupiny
- Na stránce www.fbookscraper.com vložte ID do vyhledávacího okna
- Stáhněte si seznam v CSV souboru

Stáhnutí lajků u příspěvku

- Kopírujte URL postu, který chcete analyzovat
- Jděte na <http://facebook-likes-scraper.tiny-tools.com>
- Vložte do vyhledávacího okna
- Ve výsledcích bude fotka, FB ID, FB email
- Pouze prvních 1,000 lajků

nebo Data Miner

Vyhledání a stažení FB skupin

- Vyhledání na základě klíčového slova
- Stažení a přístup po vložení emailu
- Pouze prvních 200 skupin

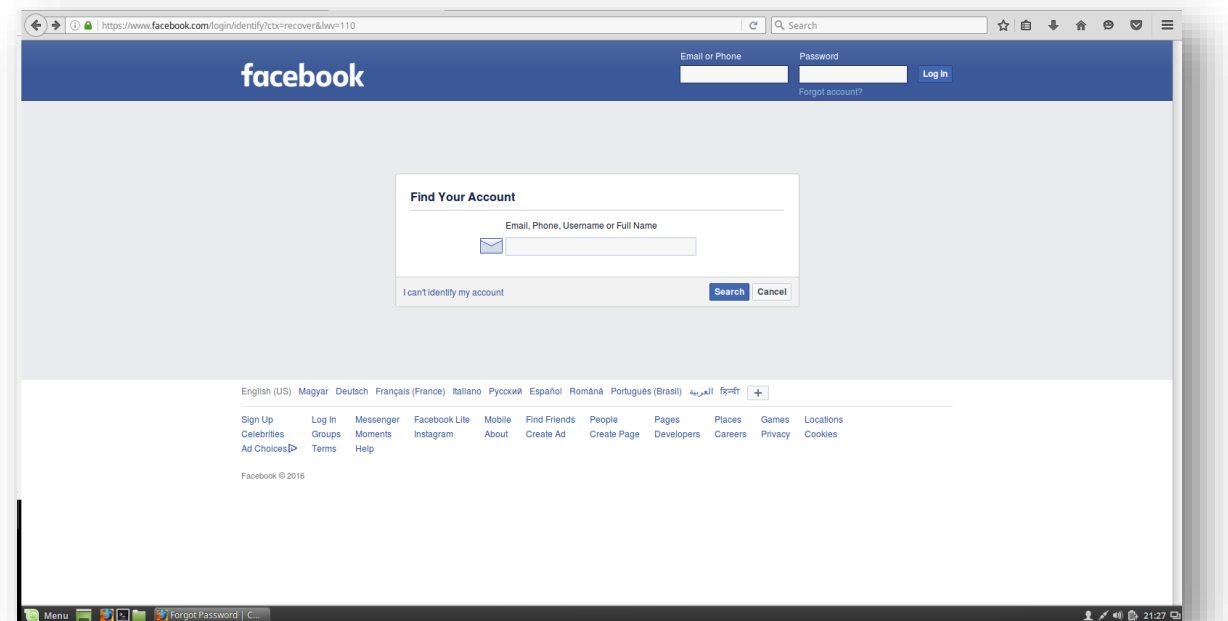
<https://fscrapper.com>

Dohledávání emailu a telefonního čísla

Vyhledávání profilů podle tel. čísla nebo emailové adresy

Log out > Forgotten account?

- <https://www.facebook.com/login/identify?ctx=recover&lwv=110>



LikeAlyzer

- Data k oblíbenosti stránky
- Obdržené lajky
- Počet příspěvků denně
- Výkon vzhledem ke konkurenci

URL: <http://likealyzer.com>

FanPageKarma

- Za použití jména nebo ID stránky
- Analýza vygeneruje statistiky k jedné nebo několika stránkám najednou
- Nutné být zalogován na FB a FanPageKarma

URL: www.fanpagekarma.com

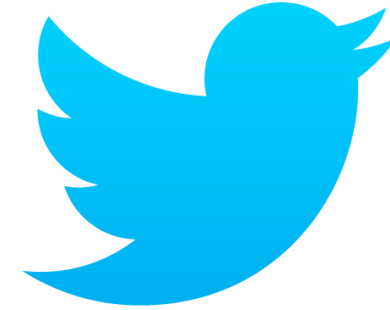
URL: www.fanpagekarma.com/vs

Twitter - geolokace



- 1 až 2 % tweetů má geolokaci...
- Vyhledávání: **geocode:49.2079517,16.5819769,5km**

Twitter – časové rozpětí



Vyhledávání

- **since:2017-01-01 until:2017-06-16 „govcert.cz“**
- **from:prezidentmluvci since:2017-01-01 until:2017-06-16**
- **to:prezidentmluvci since:2017-01-01 until:2017-06-16**

Analýza Twitteru



Twitonomy - <https://www.twitonomy.com/>

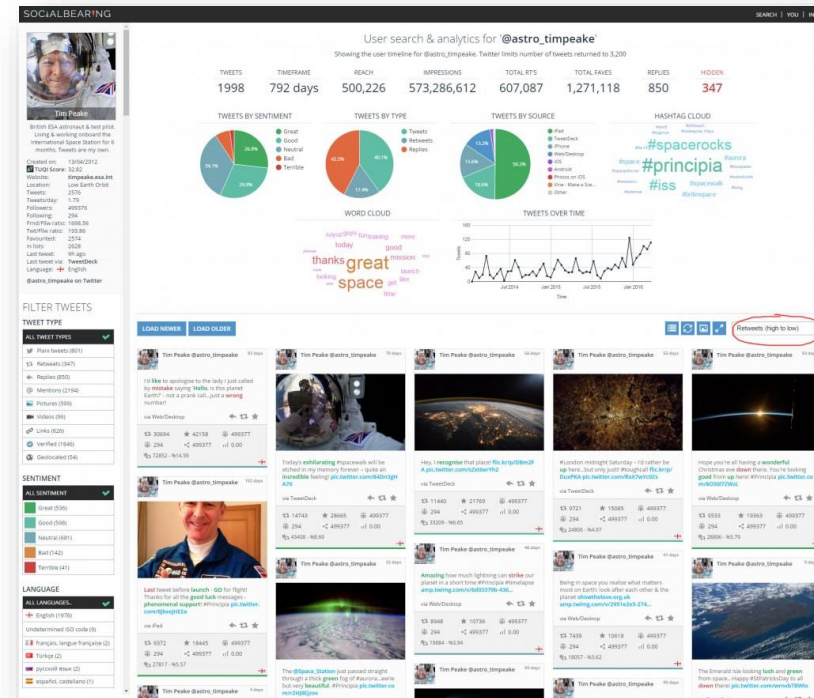
- Komplexní analýza dat o uživateli
- Mapa sociální bubliny uživatele
- Pracovní návyky uživatele
- Competitive intell tool



Analýza Twitteru

<https://socialbearing.com>

- Komplexní analýza dat o uživatelích
- Mapa sociální bubliny uživatele
- Pracovní návyky uživatele
- Competitive intell tool
- Kompletně zdarma

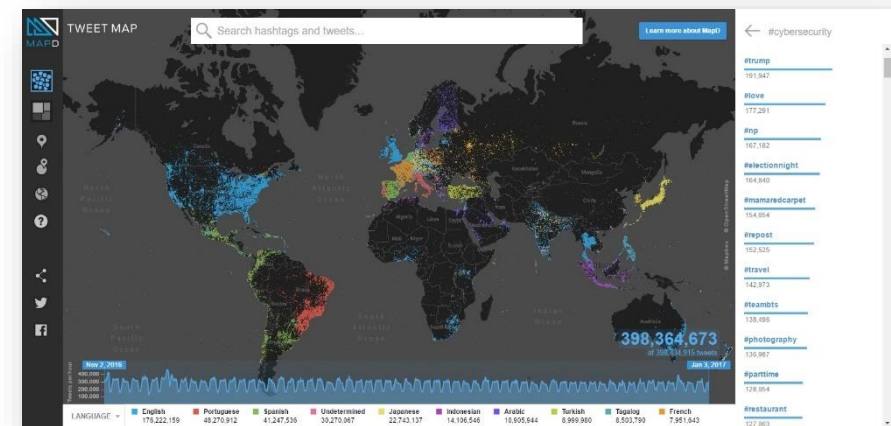


Analýza Twitteru

- **Hashtagify** - <http://hashtagify.me/> (mapy #)
- **Foller.me** - <https://foller.me/>
- **Mentionmapp** - <http://mentionmapp.com/>
- **Followeronk** - <https://moz.com/followerwonk/> (srovnání sledovaných účtů)

Geolokace na Twitteru

- One million tweet map: <http://onemilliontweetmap.com/>
- Trendsmap: <https://www.trendsmap.com/>
- Geotracking uživatelů TW:
 - <http://app.teachingprivacy.org/>
 - <http://www.tweetpaths.com/>



- Mapa tweetů
<https://www.mapd.com/demos/tweetmap/>

Prezentace

- 30. listopadu a 7. prosince 2017

Děkuji za pozornost!

o.rojcik@nukib.cz